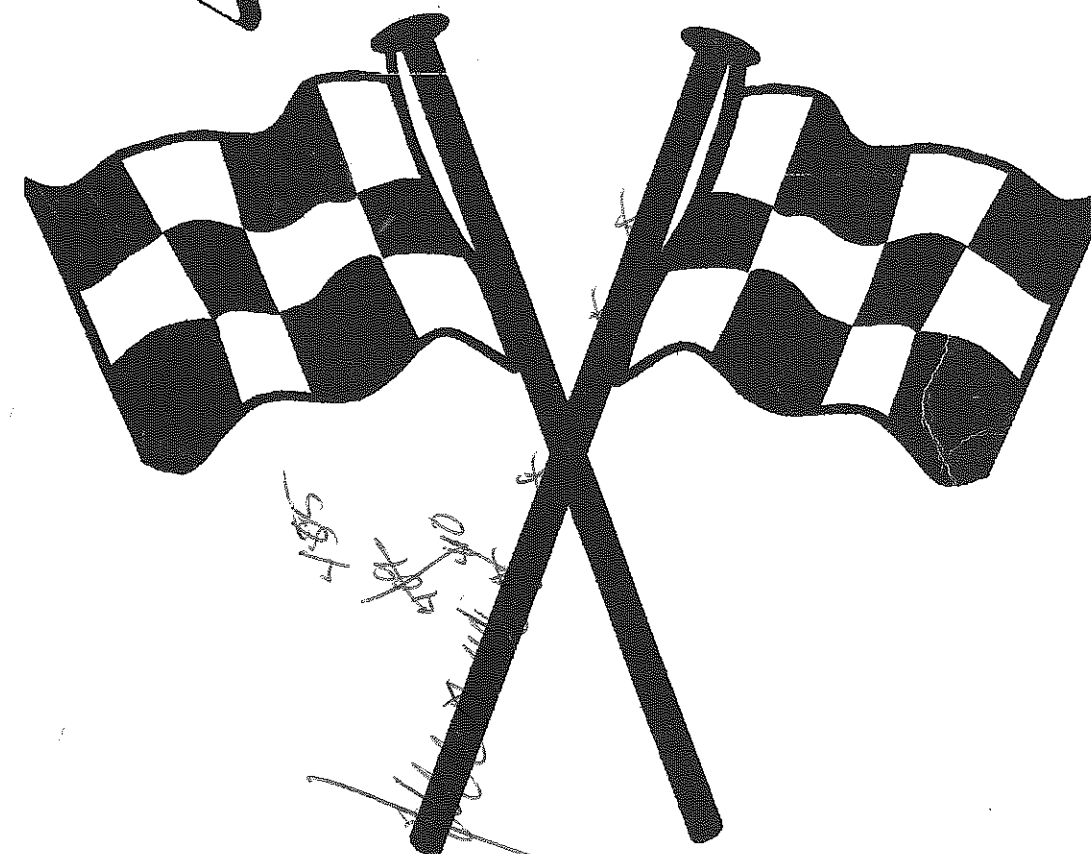


## **Texas Arc/Info Users Group**



**Sixth Annual Conference  
October 23 - 27, 1995**

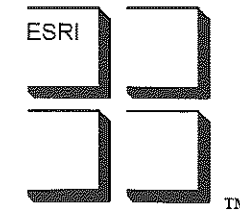
***Racing Into The Future***

*Clarion Hotel  
Dallas, Texas*

## Table Of Contents

Letter From Clint Brown	Page 3
Hotel Information	Page 4
Conference Center Layout	Page 5
Acknowledgements	Page 7
Conference Information	Page 8
Orientation	Page 8
Bus Tour	Page 10
Meals / Refreshments	Page 9
Education Forum	Page 11
Wednesday Events Preview	Page 13
Thursday Events Preview	Page 14
Friday Events Preview	Page 17
Presentation Schedules	
Thursday, Session 1	Page 20
Thursday, Session 2	Page 22
Thursday, Session 3	Page 24
Thursday, Session 4	Page 28
University Focus	Page 31
Friday, Session 5	Page 34
Friday, Session 6	Page 36
Business Meeting	Page 39
Round Table Discussions / Sigs	Page 41
Participating Vendors	Page 27
Poster Ballot / Drink Coupon	Page 44

## Conference Notes



Environmental  
Systems  
Research  
Institute, Inc.  
380  
New  
York  
Street

Redlands  
California  
92373  
USA

Telefax: (909) 793-5953  
Telephone: (909) 793-2853

To ESRI Software Users in Texas:

Greetings! On behalf of ESRI, and especially the Texas ARC/INFO User Group, I am very pleased to attend this year's conference in Dallas. I look forward to meeting and talking with each of you. This conference affords all of us a wonderful opportunity to learn about the use of GIS for a wide range of applications.

A major factor in the success of the ESRI user community has been the amazing level of interaction and support among users. This conference is clearly intended to continue that tradition. I want to encourage you to share your GIS knowledge and methods employed within your organization with other users as well as to learn from other users. Your commitment and willingness to share your knowledge, to ask questions, and to seek answers is important in making this conference a success. Please take advantage of this wonderful opportunity.

ESRI's goal is to provide spatial data management and geoprocessing technology that helps our users solve problems, perform work tasks, and effectively manage their organization's resources. While at the conference, I want to share ESRI's plans to move in new technical directions. Our development strategy will be based on many new technical trends as well as our strong desire to serve our users' needs.

One of my major goals during this conference will be to listen carefully to you because your input is critical to us. In many ways, our recent product releases are a direct result of your input and vision. This is something we sincerely appreciate. Our view is that we share a partnership with you.

I am very pleased to have this opportunity to attend, share our ideas and plans, and to learn more about your needs.

Have a great conference!

Clint Brown

CB:sp



## CLARION HOTEL



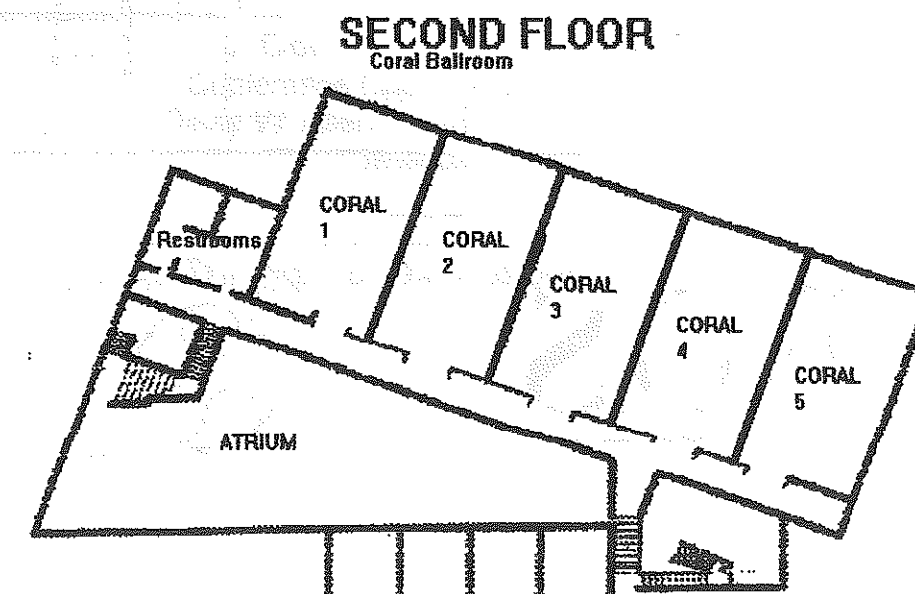
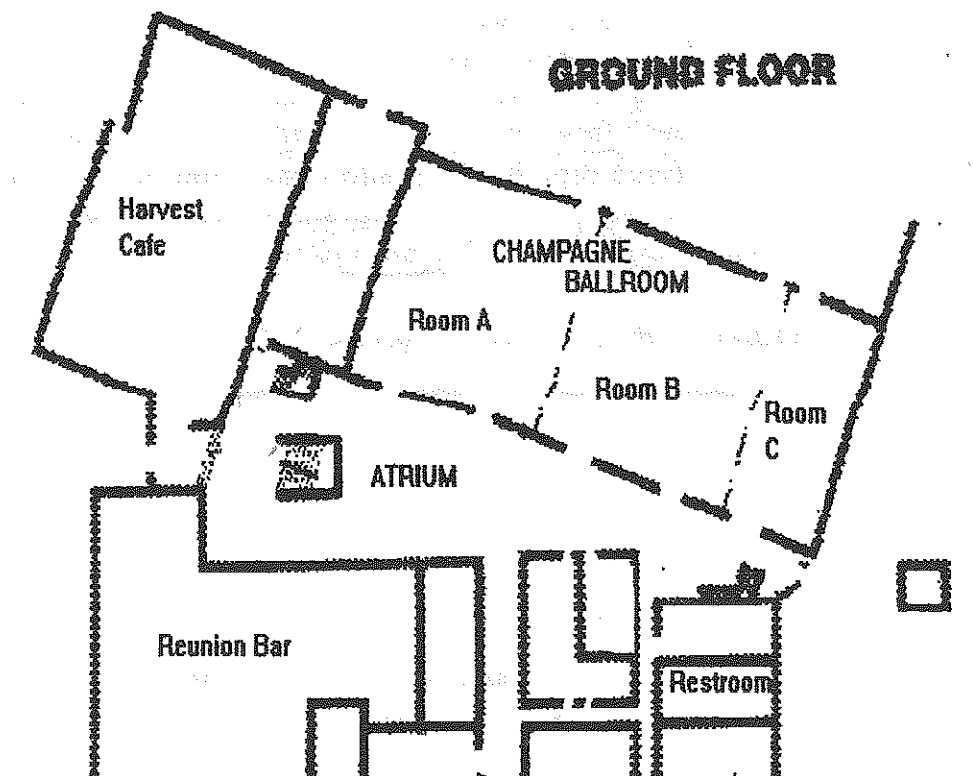
### Clarion Hotel - Dallas, Texas

**LOCATION** - Centrally located on West Mockingbird at Stemmons Freeway (I-35), just five minutes from the Dallas Market Center and Love Field. Shuttle service to and from DFW Airport for a nominal fee. The famous West End Marketplace and glamorous McKinney Avenue / Turtle Creek area is nearby.

**ACCOMMODATIONS** - A total of 350 Guest Rooms, including 5 luxury suites and 2 elegant penthouse suites. All rooms feature individual climate control, clock/radio alarms, color TV's and in-room movies.

**DINING** - The Harvest Cafe offers continental cuisine with a Southwestern flair. Breakfast, lunch, dinner, featuring weekday bountiful breakfast and luncheon buffets. Reunion Bar, a friendly neighborhood pub atmosphere with pool table, giant screen TV, games and grill menu. Room Service

**SERVICES** - Gift shop with sundry items, hotel shuttle service, valet service, coin operated laundry, free guest parking. Outdoor garden pool.



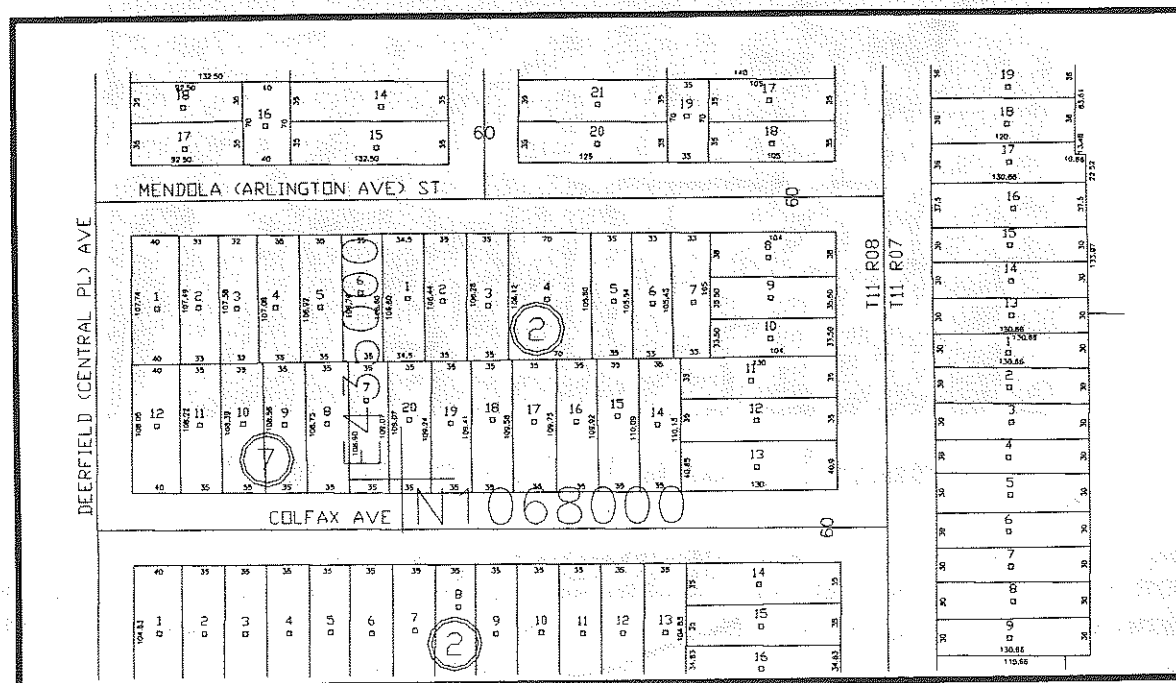


RELY ON FDS FOR THE LANDBASE THAT YOU CAN BUILD ON.

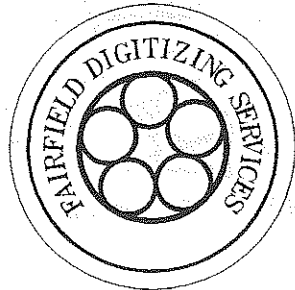
The FDS Intelligent Parcel Landbase is an edgematched, seamless vectorized cartographic map product reflecting tax parcel boundaries, lot centriods, political boundaries, road and right of way networks, hydrography and appropriate graphic annotation covering the entire FDS territory. Each graphic element in the intelligent landbase carries unique attribute information about the individual feature. The FDS data has been designed using a topological (layered) structure assuring the unique identification of each graphic data element and its associated non-graphic attribute information.

The FDS intelligent landbase digital information has been prepared using accepted cartographic procedures and is accurate to the source document used during the conversion process.

CALL TODAY FOR MORE INFORMATION (713) 568-8891



# FDS



10899 KINGHURST, SUITE 100 HOUSTON, TX 77099

AVAILABLE IN ALL MAJOR MAPPING FORMATS

## TAIUG 1994-95 Executive Committee Members

7

President - Leann Gilley  
Geo Info, Inc.

Vice President - Melinda Polley  
Ellis County Appraisal District

Secretary - Carolyn Meanley  
The University of Houston

Treasurer - Bobby Boykin  
Washington County Appraisal District

Conference Coordinator - J. Scott Sires  
Arms, Inc.

Publications Coordinator - David W. Allen  
City of Euless, Texas

Membership Coordinator - Jan Funderburg  
9-1-1 Network of East Texas

### Conference Committee

Conference Coordinator - J. Scott Sires  
David W. Allen \* Leann Gilley \* Pam Kersh  
Melinda Polley

### Special Thanks To The Following Organizations

Arms, Inc.  
ESRI, Inc.  
Geo-Info, Inc.  
The University of Houston

The City of Euless, Texas  
9-1-1 Network of East Texas.  
Washington County Appraisal District  
Data General  
Digital Equipment Corp.

### Great Appreciation to our Student Volunteer

Dipak Mulji

## Conference Information

### New Attendee Orientation

This year will be the first for many of you to attend a Texas Arc/Info User's Group Conference. We invite you to make full use of the conference and attend as many of the presentations as possible. Our business meeting will be held during a catered lunch on Friday. We will have some important topics to discuss as well as election of officers, so don't miss it.

You may also want to take advantage of the facilities offered by the many vendors who are exhibiting at the conference. The Atrium is the vendor's area and they will have trained personnel in their exhibit booths to answer about the products and services they offer. Vendors will be available all day Thursday and at a special Vendor Spotlight Thursday from 5:00 to 6:30 Co-Hosted by Geo Info, Inc.

Please plan to attend the poster and AML / SML competition on Wednesday night. There is a ballot in the back of this guide that you can use to select your favorite in each of the categories. Your votes will determine the winners of some very nice prizes.

If you have any needs during the conference, feel free to contact one of the conference staff or a TAIUG officer. They will help you solve your problem with great dispatch to ensure that you have a good conference experience.

### Conference Theme: Racing Into The Future

The theme of this year's conference is "Racing Into The Future!" Think about where you started and the roads you have traveled to get where you are. Think about how the technology has changed and how you've changed with it. What's the biggest change that you have seen? What's in store for the future?

GIS has accelerated to blinding speed in the last few years with a more powerful workstation product and an easy to use desktop product. And as more users join in on the technology, we should see an even faster acceleration towards GIS in every workplace.

We hope that this conference can help keep you up to speed on the changes and prepare you for your time trials and victory laps with GIS.



## Meals and Refreshments

Throughout the conference we have arranged to have various meals and refreshments. Please take advantage of this courtesy as you take breaks during the sessions and for lunch. The following list will help you plan your meals and snacks to take full advantage of the offerings:

### Monday and Tuesday

Sweet rolls, Coffee and Sodas at 7:45 am and 3:00 pm

### Wednesday

Cookies, Coffee and Sodas at 10:00 am, 12:00 pm, and 2:00 pm

Snacks and cheeses at 5:00 pm Reception

Check the back of this guide for a FREE DRINK COUPON

### Thursday

Deluxe continental breakfast at 8:00 am

Prepared Lunches with sodas at 12:00 noon

Light food and beverages at 5:00 pm

### Friday

Deluxe continental breakfast at 8:00 am

Lunch served at 11:00 noon in the Champagne Ballroom

### Registration / Conference Headquarters

An area at the South of the Atrium will house the registration area and conference headquarters. Any questions and/or problems can be solved here and posting will announce any room or schedule changes.

### Communication Center

Watch for the communications bulletin board that you may use for posting job openings, resumes, messages to other attendees, general notices and any type of information you may think of to post. In addition, incoming messages for attendees will be posted here as well as announcements of any conference schedule changes.

### TAIUG Bookstore

Understanding GIS - The Arc/Info Method

Understanding Arc Macro Language (w/ CD)

Inside Arc/Info (w/ CD)

ArcView Developers Guide

Inside ArcView (w/ CD)

Arc/Info Quick Reference

*Mastercard and Visa Accepted*

## GIS Bus Tour

### Leave Hotel at 8:00 am

#### 1st STOP - COLLIN COUNTY 911 - 9:30 am - 10:30 am

- Address : 210 S. McDonald  
Courthouse Basement  
McKinney, Texas 75069
- Phone : (214) 548-4588
- Contact : Tim Nolan
- Profile : Voter Re-Districting & Precincting; Maintenance of GIS Data Base; Provides Maps for the County

#### 2nd STOP - UNIVERSITY OF NORTH TEXAS - 11:15 am - 12:15 pm

- Address : General Academic Building  
Mulberry & Avenue B  
4th Floor, Room 444  
Denton, Texas 76203
- Phone : (817) 565-2374
- Contact : Bruce Hunter
- Profile : Complete Working Classroom and Teaching Facility with PC's Utilizing Xterm Emulation Technology; GIS and Remote Sensing Research Facility; GIS and Remote Sensing Modeling Research Facility; Teaching Facility for Arc/View; Facilities Management for UNT

#### 3rd STOP - LUNCH IN DENTON - 12:30 pm - 1:45 pm

- To Be Announced

#### 4th STOP - NORTH CENTRAL TEXAS COUNCIL OF GOVERNMENTS - 2:30 pm - 3:30 pm

- Address : 616 Six Flags Dr., Suite 200  
Center Point 2 Building, Second Floor  
Arlington, Texas 76011
- Phone : (817) 695-9153
- Contact : Miles Phillips
- Profile : Base Map Rectifying; Coordinates the USGS DOQ Project for the State of Texas; Address Geocoding; Maintains Internet Web Site and GIS Products; Transportation Applications; Trinity River Applications

#### 5th STOP - CITY OF DALLAS - 4:15 pm - 5:15 pm

- Address : 1500 Marilla  
Downtown Dallas  
Dallas, Texas 75201
- Phone : (214) 670-4202
- Contact : Gary Penny
- Profile : Developing a Firewall for Internet Security; Maintains Consortium Data

### Arrive at Hotel Approximately 5:45 pm

## Special Events

### Education Forum

Once again this year the TAIUG is sponsoring a Public Service Day in conjunction with the conference. On Wednesday morning, groups of students from area schools will be invited to the hotel for a briefing and orientation on GIS. These students represent the future of GIS and this event is always popular with them.

Concurrently, school district administrators will be attending a presentation by ESRI demonstrating how GIS can be used in an education environment. The presentation will highlight uses for both administrative functions as well as classroom education.

Special Thanks to Euless Jr. High  
and Jenny Fish, GCISD

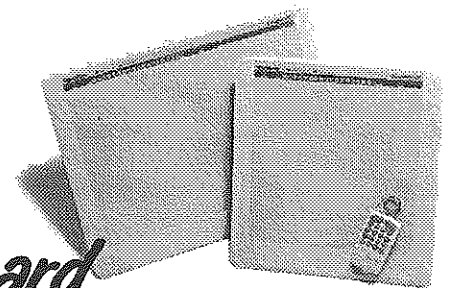
### Pit Stop at the West End

Buses will be available to transport you to the famous West End on Thursday Night at 7:00 pm. The West End offers dining, dancing and shopping in a unique 'warehouse district' atmosphere. Attendees should meet in the lobby at 7:00pm to catch the shuttle. Dinner and shopping are on your own.



*TechJET* 175i

*DrawingBoard*



For GIS mapping, or other imaging needs, the place to go for input and output solutions is your CalComp reseller. For information, or the location of your nearest reseller, call Peggy Stepuchin at (310) 546-9292.

**CALCOMP**

# Special Thank You

The Following Companies Supplied Equipment for our ArcView Class, AML Class and Education Forum. The TAIUG Extends a Special Thank You!

Digital Equipment Corporation

DataGeneral

Environmental Systems Research Institute

Geo-Info, Inc.



# Daily Events Preview

## Wednesday, October 25

Conference Registration	8:00 am	Registration Desk - Atrium
Public Service Activities	9:00 am - 2:00 pm	Coral Room 2 and 3
Tour Bus Departs Hotel	8:30 am	Front Desk / Lobby
Bus Returns to Hotel	5:30 pm	
Opening Session Keynote Address	7:00pm to 8:00 pm	Champagne Ballroom B and C
Reception and Poster Session	8:00 pm to 10:00 pm	Champagne Ballroom A

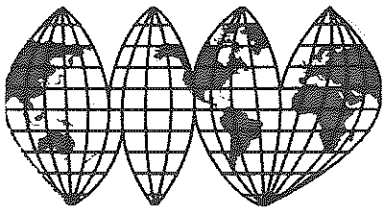
When your imagination knows  
no boundaries...

Berger & Co. can assist in  
implementing GIS as part of your  
information systems plan

GIS Specialists in:

- GIS database design and implementation
- GIS hardware and software evaluations
- GIS based Graphic User Interface design and development
- Integrated GIS application design and development
- GIS and Informations Systems Education

For More Information Please Call Mr. Vince Rosales at 1-800-685-5566



Berger & Co.

INFORMATION MANAGEMENT CONSULTANTS

Denver • Houston • Dallas



## Daily Events Preview

Thursday, October 26

Conference Registration	8:00 am to 4:00 pm	Registration Desk - Atrium
Deluxe Continental Breakfast	8:00 am	Conference Center Atrium
Breakout Sessions	8:30 am to 9:30 am	
	<i>Multi-Media Facility Information Management</i>	<i>Coral Room 1</i>
	<i>ArcStorm</i>	<i>Coral Room 2</i>
	<i>Graphics &amp; Database Conversion</i>	<i>Coral Room 3</i>
	<i>Creation of Satellite Image Database</i>	<i>Coral Room 5</i>
Vendor Area Open	9:00 am to 6:30 pm	<i>Champagne Ballroom B and C</i>
Break	9:30 am to 9:45 pm	<i>Atrium</i>
Breakout Sessions	9:45 am to 10:45 am	
	<i>Scanning Technology</i>	<i>Coral Room 1</i>
	<i>Fun With FormEdit</i>	<i>Coral Room 2</i>
	<i>Telecommunications Tariffs and Grants</i>	<i>Coral Room 3</i>
	<i>Importing GPS Data into ArcView</i>	<i>Coral Room 5</i>
Break	10:45 am to 11:00 am	<i>Atrium</i>
Breakout Sessions	11:00 am to 12:00 pm	
	<i>Infrastructure Maintenance with Nodes and Dynamic Segmentation</i>	<i>Coral Room 1</i>
	<i>Spatial Database Engine</i>	<i>Coral Room 2</i>
	<i>Accuracy Using GPS/GIS</i>	<i>Coral Room 3</i>
	<i>Doctor's Office</i>	<i>Coral Room 5</i>

## Daily Events Preview

Thursday, October 26

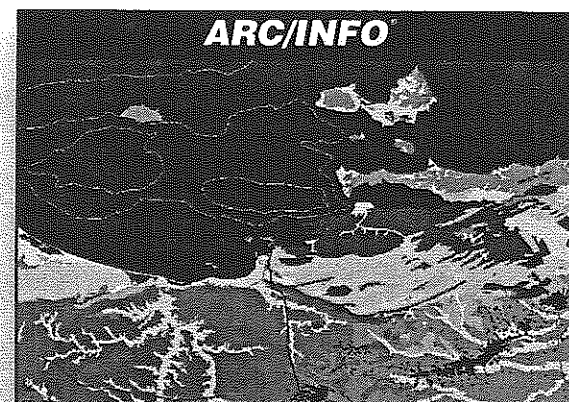
Lunch	12:00 pm to 1:30 pm	Boxed Lunches and Soda Provided Conference Center Atrium
Vendor Area Remains Open	till 6:30 pm	<i>Champagne Ballroom B and C</i>
Afternoon Breakouts	1:30pm to 2:30 pm	
	<i>Historical GIS Applications: Sawmill Culture and Ethnic Neighborhoods</i>	<i>Coral Room 1</i>
	<i>9-1-1 Dispatch With ArcView 2</i>	<i>Coral Room 2</i>
	<i>TBA</i>	<i>Coral Room 3</i>
	<i>Doctor's Office</i>	<i>Coral Room 5</i>
Break	2:30 pm to 2:45 pm	
University Competition	2:45 pm to 4:45 pm	<i>Champagne Ballroom A</i>
Vendor Exhibit Spotlight	till 6:30 pm	<i>Champagne Ballroom B and C</i>
	<i>Snacks Co-Hosted by Geo/Info, Inc.</i>	
West End Pit Stop	7:00 pm to 10:00 pm	Busses Depart From Lobby

# GIS Solutions

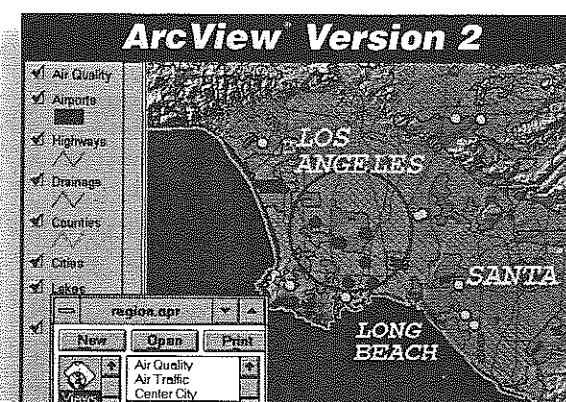
F r o m E S R I

For over 25 years, Environmental Systems Research Institute, Inc. (ESRI), has been providing innovative software for thousands of users around the world.

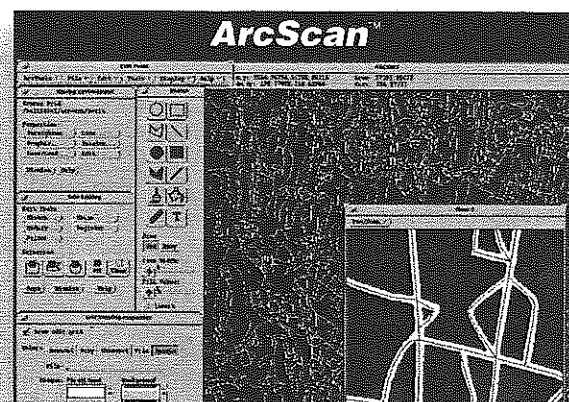
17



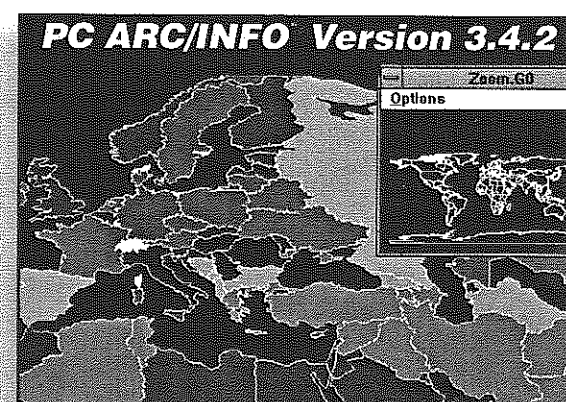
With over 60,000 users worldwide, ARC/INFO is the standard by which all other GIS systems are measured. ARC/INFO continues to revolutionize how organizations manage complex data for better decision making.



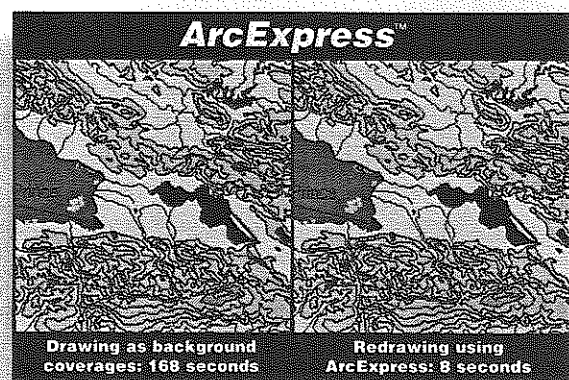
ArcView Version 2 is an affordable, easy-to-learn desktop mapping and GIS tool that enables you to quickly select and display different combinations of data for creatively visualizing information.



The ArcScan extension provides a suite of software tools for incremental raster-to-vector conversion (line following) and raster editing within the ARC/INFO Version 7.0 environment.

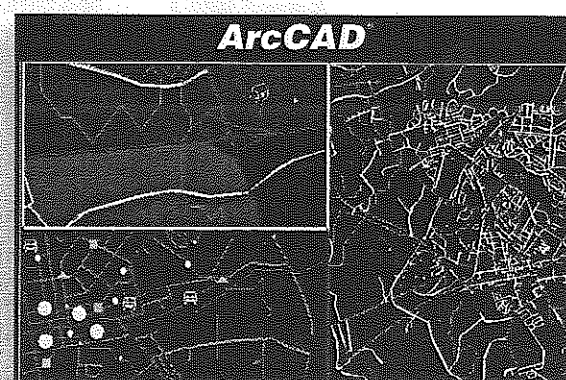


PC ARC/INFO is the popular desktop version of ARC/INFO for Windows™ and DOS™ users. It includes tools for data automation, cartographic production, overlay, buffer, geocoding, routing, and lots more.



The ArcExpress extension to ARC/INFO Version 7.0 accelerates the display performance of ARC/INFO software on UNIX® workstations, vastly improving display speed on large spatial databases.

For more information about the ESRI® family of GIS solutions or for a dealer near you, call ESRI today at  
**1-800-447-9778**  
or E-mail: [info@esri.com](mailto:info@esri.com)



ArcCAD brings world-leading GIS tools to the engineering desktop by providing the critical link to AutoCAD®. ArcCAD is the only full-featured GIS program that works with AutoCAD's powerful design and drafting tools.

Outside the United States, call  
**909-793-2853, ext. 1235**  
Visit ESRI on the World Wide Web at  
<http://www.esri.com>

## Daily Events Preview

Friday, October 27		
Conference Registration	8:00 am to 12:00 pm	Registration Desk - Atrium
Deluxe Continental Breakfast	8:00 am	Atrium
Breakout Sessions	8:30 am to 9:30 am	
	<i>TAIUG on the World Wide Web</i>	Coral Room 1
	<i>Land Records: An ArcTools Application</i>	Coral Room 2
	<i>The Texas Digital Ortho Quarter Quad Project</i>	Coral Room 3
	<i>Introduction to ArcView 2</i>	Coral Room 5
Break	9:30 am to 9:45 pm	
Breakout Sessions	9:45 am to 10:45 am	
	<i>Creating Digital Orthophotographs</i>	Coral Room 1
	<i>Doctor's Office</i>	Coral Room 2
	<i>Implementing a GIS: A Management Perspective</i>	Coral Room 3
	<i>Introduction to Avenue</i>	Coral Room 5
Break	10:45 am to 11:00 am	
Business Meeting and Lunch	11:00 am to 1:00 pm	Champagne Ballroom B and C
		Lunch Served During Meeting
Break	1:00 pm to 1:15 pm	
Round Table Discussions and SIGs	1:15 pm to 4:30 pm	Champagne Ballroom A
Conference Ends	4:30 pm	

## QUESTION:

Whose products

1. *Represent the GIS platform of choice for USGS, US EPA, Louisiana DNR and the Oklahoma Cadastral Library?*
2. *Were responsible for more than 1600 new ESRI GIS licenses in the first 6 months of 1995 alone?*
3. *Support integrated Arc/Info solutions for a multitude of related applications including Three-Dimensional Databases (Pick-Based), Utility Billing, Civil Engineering, Permitting, Evaluation, and others.*
4. *Provide the optimal client-server environment for GIS computing: High performance and ease of use at the desktop, coupled with maturity, reliability and fault-tolerant storage within the spatial database server.*

## ANSWER:

# DATA GENERAL

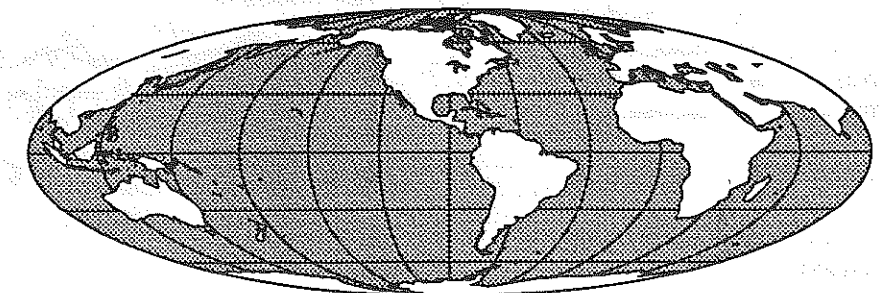
Bringing Common Sense to GIS Computing

For Information and special pricing contact **ESRI** or **Doug Burnside** (303)486-7615 or **Buzz Hiller** (508)898-6729

## Conference Notes

**IMPLEMENTING A GIS?**  
**SMARTSCAN**  
CAN provide you with A WORLD of GIS DATA SERVICES:

- ♦ Conversion Planning
- ♦ Digital Data Integration and Conversion
- ♦ Map Scanning
- ♦ Project Management
- ♦ Quality Assurance Planning & Services
- ♦ Data Conversion



## A World of GIS Services

For your **FREE** GIS Data Conversion Project Analysis and sample data files, call Karen Andersen at 303-443-7226 or fax her at 303-443-2997.

Presentation Schedule

Thursday Session 1 8:30 am - 9:30 am

Multimedia Facility Information Management Aubie Oslin Coral Room 1  
CH2M Hill

Facility Information Management (FIM) can be regarded as the integration of software packages for the management of and access to electronic information used by a facility or organization. This definition implies that the FIM system must be flexible, expandable and easy to use so that locating an organization's information is fast and simple.

As illustration, a pilot FIM prepared for the Trinity River Authority Wastewater and Water Treatment Plant will be presented. Facility management systems will be discussed with emphasis on utility network modeling using node attributes and routes.

Introduction to ArcStorm Daniel Stone Coral Room 2  
ESRI Technical Staff

ArcStorm ( Arc Storage Manager) is a powerful geographic data management technology. Based on Client/Server architecture the ArcStorm module implements breakthrough technologies for spatially organizing and managing geographic information in a database.

Topics discussed include:

- Librarian Vs. ArcStorm
- ArcStorm Organization
- Database Creation
- Database Maintenance
- Database Security
- Data Output

IS GEODATABASE SUPPORTED  
IN ArcStorm? MAYBE  
NO  
MAYBE IN ArcView

Presentation Schedule

Thursday Session 1 8:30 am - 9:30 am

Graphics & Database Conversion Alphabet Soup David Dignum Coral Room 3  
DXFTIGERTXDOTIGDSRRCOM Jefferson County Appraisal District

How to Prevent Data Indigestion  
Discussion of concepts of converting data from Computer Aided Drafting (CAD), State Government and Federal Government map files into ARC/INFO coverages and passing coverage database information back out to CAD users.

Also covered is converting map information from ASCII file formats into a useable ARC/INFO coverage and how to transfer coverages on tapes, diskettes and over networks.

David Dignum has a BS degree in Forest Management (1983) and an MS degree in Forestry (1988), both from Texas A&M University. He specialized in GIS and Remote Sensing. Since 1989 he has been employed with the Jefferson County Appraisal District where he serves as a GIS specialist. He has provided consulting services for the South East Regional Planning Commission, Orange County Appraisal District, Louisiana-Pacific / Kirby Forest Industries and Jasper County Appraisal District. David also chairs the Texas Association of Appraisal Districts Methods and Technology Committee.

Creation and GIS Application of John B. McKeon Coral Room 5  
a Satellite Image Database: SPOT Imagege Corporation  
The Louisiana Statewide Project 17304 N. Preston Road Suite 800  
Dallas, TX 75252

Remotely sensed imagery has gained wide acceptance as an information source by GIS specialists using various systems including ARC/INFO and ArcView. This presentation describes the production of the first 10 meter resolution satellite image base for the entire state of Louisiana and its application by six different federal and state governmental agencies.



## Presentation Schedule

Thursday Session 2 9:45 am - 10:45 am

### Scanning Technology - A real world application scanning maps to create digital data. The City of Lubbock Master Drainage Study

Leann Gilley  
Geo-Info, Inc.

Coral Room 1

After all the contracts have been awarded, after all the celebration is over, someone has to go to work creating the data to get the job done. This presentation will include an overview of the entire project and an in depth look at the first phase data conversion.

Utilizing existing blue line maps of contours and streets of the City of Lubbock, staff at Geo/Info, Inc. transformed maps into digital files. This process was performed by carefully mixing a variety of softwares, hardwares, and peripheral devices.

Leann Gilley, the current TAIUG President, holds a Bachelor's of Applied Arts and Sciences in Technology from the University of Texas, Tyler, and an Applied Arts and Sciences Degree in Land Surveying Technology from Tyler Junior College. Ms. Gilley is the president and principle owner of Geo/Info, Inc., a full service GIS applications development firm.

### FUN WITH FORM EDIT

Tim Nolan

Collin County, Texas

Coral Room 2

Formedit is a graphical tool that creates AML form menus. This graphical interface provides both the novice and expert a method of creating new form menus or modify existing ones quickly.

This session will attempt to execute various demonstrations of FormEdit. The workshop is intended to be casual and audience participation is encouraged. Various techniques of AML programming, such as ATOOLS and DOCUMENTATION, will also be discussed.

Tim Nolan is the GIS Database Administrator of Collin County. He is responsible for the design and maintenance of the County's GIS. He received his B.A. in Geography from the University of North Texas in 1991. He was the City of Arlington's 'plot boy' for four months before landing the Collin County job three and half years ago.

Tim is proud to announce that Collin County's GIS student internship program has launched its second year. On a personal note, Tim continues to enjoy his view from the basement window.

## Presentation Schedule

Thursday Session 2 9:45 am - 10:45 am

### Telecommunications Tariffs and Grants

Mark Evans  
Brazoria County Abstract Company

Coral Room 3

In Texas, new legislation was recently passed that provides for competition in the local telephone business. This session is about House Bill 2128 and its effect on schools, hospitals and libraries. This new law was designed not only to provide for competition, but also to improve the telecommunications infrastructure in the entire state. This means wiring schools, hospitals, and libraries for advanced communications networks to make Texas a more appealing market for business and education.

The two topics covered concern low cost data circuits and State grant money that is available. Come see how to take advantage of this very important opportunity.

Mr. Evans is in his 20th year of Data Processing and Communications. He has worked for a school system as a systems analyst. He then worked for Boeing as an analyst in a main communications Site. A medical device manufacturer (pacemakers) brought him to Texas 14 years ago as a technical systems person.

For the last three years, Mark has been employed with Brazoria County Abstract Company (a real estate closing and title insurance firm). He has implemented a combined Voice and Data Network for intr-office communications utilizing T-1 telephone lines. His company is in the process of building a complete parcel level based GIS for Brazoria County. This is being done in a unique joint venture with the Brazoria County Central Appraisal District.

### Importing GPS Data into ArcView 2

Karen Steede  
Trimble Navigation

Coral Room 5

There are different methods of moving GPS data into ArcView2. Using a wide variety of Trimble GPS products, data can be captured, downloaded and easily brought into your ArcView2 system. I will demonstrate these methods, as well as introduce 'Direct to GPS', Trimble's new GPS interface for Arcview2. I will also show real world applications using GIS and GPS, including a recent tour of the Edwards Underground Aquifer.

Karen Steede has over 6 years of experience in Geographic Information Systems. Before joining Trimble in October of 1994, she was with ESRI in Redlands, CA for 2 1/2 years. Karen can be reached at 1-800-865-4849.

## Presentation Schedule

Thursday Session 3 11:00 am - 12:00 am

**Infrastructure Maintenance:** David W. Allen Coral Room 1  
**How I use Node Attributes and City of Euless, TX**

**Dynamic Segmentation on Water, Sewer and Street Conditions**

Many new tools have been added to Arc/Info with rev. 6 and 7 that allow better ways to manage data for infrastructure maintenance. These include node attributes and dynamic segmentation. The presentation will show how these are integrated into Euless' infrastructure maps in ArcEdit and ArcPlot to produce various analyses.

David has a Bachelor's of Science in Architecture and 11 years of experience in GIS and utility mapping. His system at Euless includes coverages used for infrastructure maintenance, planning, zoning, land use, and many relate municipal uses.

**SDE : An ArcTools Application** Henry Hagemeier Coral Room 2

ESRI has taken advantage of advances in client / server computing and database management. These technologies allow you to manage geographic data, disseminate it based on clever and effeciant spatial abalysis queries, deliver it anywhere on your network, and embed the query and analysis functionality into any application. This technology is the Spatial Database Engine (SDE).

Henry received his Bachelors degree in Liberal Arts at the University of Texas with a major in Anthropology and Geography. His gratuate work is in GIS and applied geography at Southwest Texas State University.

*SDE - HIGH SPEED SELECTIONS.*

*SPATIAL DATABASE? ⇒ MAYBE! DEDICATED TO AI.*

*↳ ACTS AS A VERY FAST AVZ*

## Presentation Schedule

Thursday Session 3 11:00 am - 12:00 am

**A Study of Relative Accuracy Using GPS/GIS Techniques** Chester Helt Coral Room 3  
**for Van Zandt County** Halff Associates, Inc.

Analysis of existing accuracy levels of the G.I.S. at the Van Zandt County Appraisal District was performed by Albert H. Halff & Assoc. The results of this analysis led to an improved relative accuracy of 50%. This was accomplished using special transformation techniques within Arc/Info.

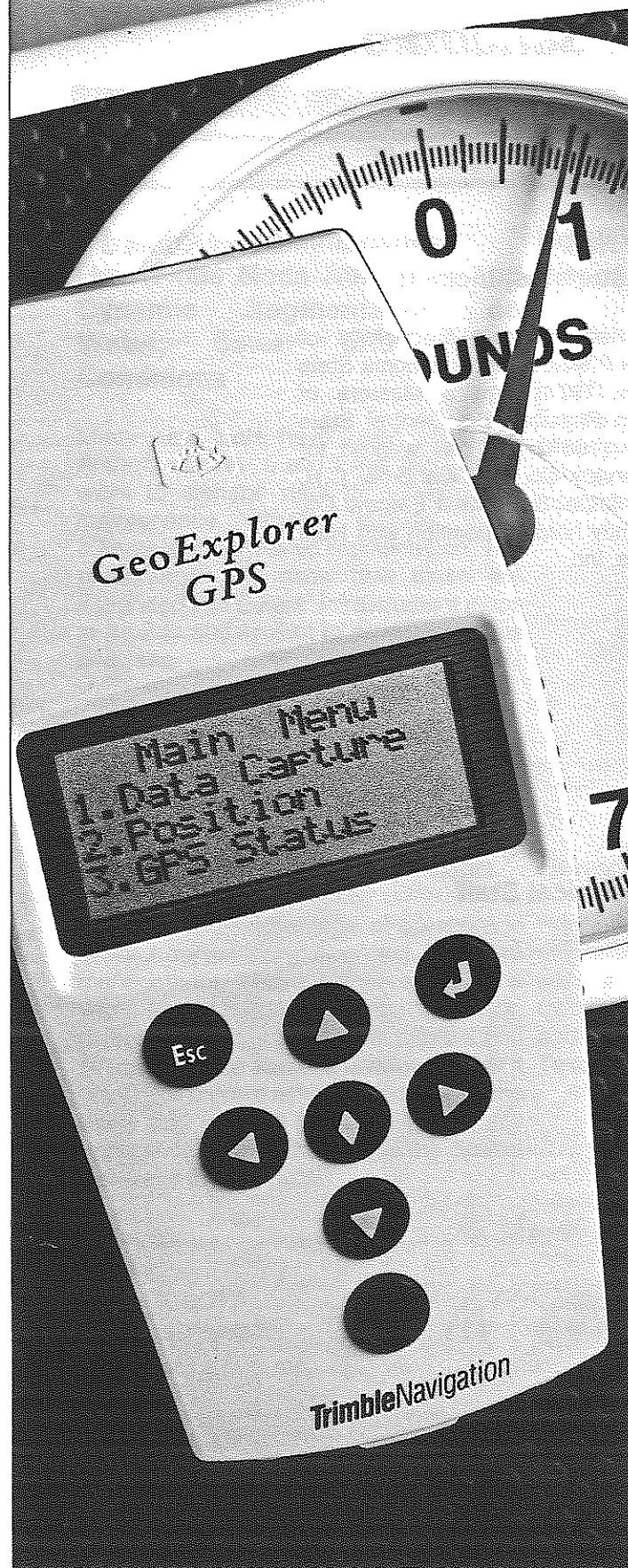
Chester Helt holds a Bachelor's of Science in Physics from Oklahoma State University (1974) and a Masters of Science in Physice from Central State University (1984). He has worked for Public Service Co. of Oklahoma, C.H. Guernset & Co. Southwest Electric Co. and currently holds a position with Halff Associates, Inc.

**Doctors Office** ESRI Technical Staff Coral Room 5

Got a problem? Not sure how a particular feature could be used to make your job easier? Here's your chance to get all the answers from the people that know Arc/Info and all of the ESRI products the best. Stop by at any time during this sessions and talk with one of the GIS "Doctors" on hand.

*ASK ABOUT SDE.*

Actual size. Actual weight. Actual price.



*And it actually delivers  
2- to 5-meter differential  
GPS mapping accuracy.*

Imagine putting a GeoExplorer™ GPS receiver in your pocket in the morning, spending the day logging thousands of positions, then driving back to your office to move your data directly into your GIS or CAD package.

You can.

In fact, its light weight and portability—combined with its accuracy and affordability—make it the perfect choice for your field work. In just a few hours learning time, you can use the

GeoExplorer receiver as easily as a cellular phone. Its clear, understandable menus guide you through the field-mapping and data-collection process.

It includes some of the most powerful differential correction software available—it even offers sub-meter accuracy as an option. If you require real-time differential correction, you can easily add an inexpensive DGPS radio link.

You can also add feature-and-attribute data-collection software that makes the GeoExplorer system easy to customize for your applications.

And it's compatible with all Trimble GPS mapping systems and base stations—the largest installed base in the world.

We'd like to show you how the GeoExplorer system can put eight years of Trimble GPS mapping expertise in the palm of your hand.

For a free videotape and brochure, please call 1-800-927-9291, fax your request to 1-408-481-7744, or send an e-mail message to [explorer@trimble.com](mailto:explorer@trimble.com).

**\$2995.**



**Trimble**

Surveying and Mapping Systems  
645 North Mary Avenue  
Sunnyvale, CA 94088-3642  
(408) 481-8940  
(408) 481-7744 Fax

The TAIUG would like to extend a special thank you to the vendors who have supported this conference. Their efforts on our behalf are greatly appreciated.

**ESRI, Inc.**

**Trimble Navigation**

**Digital Equipment Corporation**

**Geo-Info, Inc.**

**Merrick & Co.**

**Calcomp**

**Iconics**

**Data General Corp**

**Smartscan**

**Atlantic Tech**

**Berger & Co.**

**Spot Image**

**Fairfield Digitizing**

**WPTC**

Presentation Schedule

Thursday Session 4 1:30 pm to 2:30 pm

**Historical Applications; East Texas Sawmill Culture and Galveston Ethnic Neighborhoods** Darrel L. McDonald Coral Room 1

Darrel is an Assistant Professor and Research Associate at Stephen F. Austin Stat University. He is the Program Chair for the East Texas URISA group. Currently, McDonald works with the Tucker Center for GIS Application Development and Training, Forestry GIS Laboratory and the Humanities Undergraduate Environmental Science Laboratory.

The discussion will cover the development of GIS applications for spatial analysis of historical databases which are being designed for educational models, research vehicles and use as visual information systems in regional museums. Issues in historical data transformation into a GIS database format will be highlighted.

**Programming with Avenue for 9-1-1 Applications** Jan Funderburgh Coral Room 2

Jan Funderburgh has been employed by the 9-1-1 NETWORK of East Texas (Smith County, Texas) as Database Manager since 1986. Smith County is a rural county (924 square miles) with a population of 160,000 and has one primary city, Tyler (population 75,000) and seven smaller cities.

AreView2 and Avenue are being used as a way to provide complitized maps at emergency response agencies. With the use of Avenue, customized menus have been designed to support and enhance dispatcher's needs to quickly locate addresses, county roads, and subdivisions.

Consideration was given to develop menus which require a minimal amount of road name spelling to simplify the query procedures.

Jan led the team which researched and designed a computerized mapping and addressing project for Smith County. She was given the responsibility of coordinating the project, as well as developing procedures for integrating the 9-1-1 address system into ARC/INFO.

The platform is a 120 Mhz Pentium computer with 32 MB of memory and a 21" monitor. With dispatcher training complete, the project is now in use. This presentation will be a demonstration of the actual ArcView2 and Avenue project.

Presentation Schedule

Thursday Session 4 1:30 pm to 2:30 pm

**Topic And Presenter To Be Arranged** Coral Room 3

**Doctors Office** **ESRI Technical Staff** **Coral Room 5**

Got a problem? Not sure how a particular feature could be used to make your job easier? Here's your chance to get all the answers from the people that know Arc/Info and all of the ESRI products the best. Stop by at any time during this sessions and talk with one of the GIS "Doctors" on hand.

*SDE.  
Token RIND?  
Does ORACLE RESIDE w/ SOME MACHINE AS SDE?*



# FEED ME



**SPOTView® digital orthoimagery is the ideal geographic information diet for your GIS -- detailed, up-to-date, and easy to digest in ARC/INFO and ArcView. Update your vectors. Extract land use information. Put your data in context. Fill in where your vectors leave off. For any location in the world!**

**Now you can taste test this powerful satellite image product for FREE with the SPOTView CD-ROM data sampler. Just call 1-800-ASK-SPOT, and say "Feed Me" or contact us at the address/fax number below.**

**SPOT Image Corporation • 1897 Preston White Drive • Reston VA. 22091-4368  
Phone# 703-715-3100 Fax# 703-648-1813**

SPOT  
IMAGE



## University Focus

2:45 to 4:45  
Champagne Ballroom A

TAIUG will present the Third Annual GIS Education Competition on Thursday, October 26. Students from University around the state will present projects that they have completed in an academic situation. Judges will review an oral presentation of the projects and determine winners. Members are encouraged to ask questions and also review the projects. Prepare to be surprised at the depth and completeness of these student projects.

A schedule of competitors and projects will be available at the start of the session.

## When Performance Counts

Analytical Photogrammetry  
Digital Orthophotography  
GPS Surveying/Utility Inventory  
Precision Cadastral Mapping  
GIS Applications Development  
• Engineering/Utility Applications  
• Planning Applications

*We listen to your needs.  
We understand your requirements.  
And we combine 35 years of  
experience with the latest  
technology to perform beyond  
your expectations. For more  
information on our capabilities,  
please call:  
1-800-544-1714 ext. 4126*



**MERRICK**

Merrick & Company  
Denver, Colorado / USA  
303/751-0741 / Fax 303/745-0964

# ***RUN***

## ***With The Leader In Geographic Information System Services***



Out of the Starting Gate and Crossing the Finish Line, GEO/INFO is a proven and dedicated leader in assisting client's with their race to implement and maintain their Unix and PC ARC/INFO GIS. Utilizing the most talented jockeys and sophisticated racing and training aides, GEO/INFO can make you a winner in your race to the GIS future! Call us, our Tack Room Door is always open.

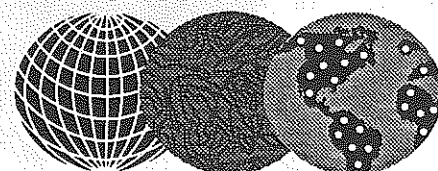


The Future's Winning Tri Facta  
GEO/INFO \* ARC/INFO \* YOU

### **GEO/INFO's Daily Racing Form**

- Start to Finish ARC/INFO GIS Solutions
- Complete Data Conversions
- Scanning and Automated Vectoring
- GIS Consulting
- Application Programming
- Data Base Design
- Project Management
- Training and Support
- ESRI PC ARC/INFO, ArcView 2, ArcCAD Dealer
- Direct Data's CGX Dealer
- Wessex First Street Dealer

## **GEO/INFO, Inc.**

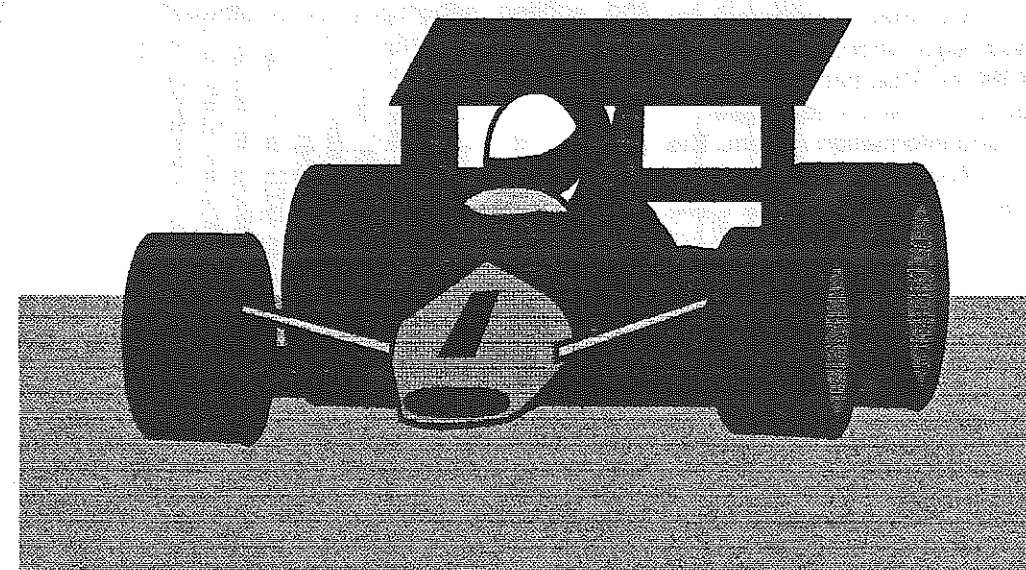


**903-592-4473**

777 S. Broadway, Suite #201  
Tyler, Texas 75701

**Don't miss the Vendor Spotlight !**

Vendors will be exhibiting all the newest technology in scanners, workstations, plotters as well as offering any number of different GIS related services. The Vendor Area is open all day Thursday in Champagne Ballroom B and C, but at 5:00 pm, we will be having a special Vendor Spotlight Co-Hosted by **Geo-Info, Inc.** Refreshments will be served until 6:30 pm and you will have a chance to re-visit the areas that were of great interest. Don't Miss out, because the vendor area is only open for ONE DAY.



## Presentation Schedule

Friday Session 5 8:30 am to 9:30 am

### TAIUG on the World Wide Web

David W. Allen  
City of Euless, TX

Coral Room 1

The TAIUG, with the cooperation of the City of Dallas, has established a presence on the World Wide Web. It has been used to distribute amls, provide conference information, post job openings and much more. Take a live look at the site along with other interesting GIS related sites.

David has a Bachelor's of Science in Architecture and 11 years of experience in GIS and utility mapping. His system at Euless includes coverages used for infrastructure maintenance, planning, zoning, land use, and many relate municipal uses.

### Land Records : an ArcTools Application

Henry Hagemeyer

Coral Room 2

Traditionally maintained by local government agencies for tax assessment purposes, land records are also used by other local government agencies for planning, deed registration, public works, permits, and so on. That being so, a land records application needs to support a multipurpose land information system. The Arc/Info Land Records application has been designed in ArcTools to meet these requirements.

Henry received his Bachelors degree in Liberal Arts at the University of Texas with a major in Anthropology and Geography. His graduate work is in GIS and applied geography at Southwest Texas State University.

## Presentation Schedule

Friday Session 5 8:30 pm to 9:30 pm

### The Texas DOQQ Project: A State Basemap Initiative

Drew Decker  
Texas Department of  
Information Resources

Coral Room 3

The Texas GIS Planning Council (GISPC) is pleased to announce that funding has been obtained from the U.S. Geological Survey and the State of Texas to help fund a new statewide basemap initiative. The basemap will use color infrared aerial photography to create digital ortho quarter-quads (DOQQs). This project is an excellent example of cooperation between local, state and federal governments and is one of the largest DOSS production projects in the country.

Drew is currently very busy with others in DIR and the GIS Planning Council in getting the Texas DOQQ project started.

Drew received a Bachelors in Geology from New Mexico State University and a M.S. in Geography from Florida State University. He received a Ph.D. in Geography from the University of South Carolina in GIS and remote sensing in 1991. Before starting with DIR, he worked for Dr. Charles Palmer at the Texas Natural Resource Information System (TNRIS) in Austin, TX.

DELIVERABLES  
PDMs, CDS  
ea. QR - 150MB.

### A Brief Introduction to ArcView

Rob Burke  
ESRI Redlands  
Technical Staff

Coral Room 5

ESRI Technical Session with on-screen demonstrations. Topic includes new features of ArcView2 and a demonstration of datasets available for use.

ADDITIONAL  
CONTROL?

DEPENDS ON  
CONTRACTOR.

WHY IR?

VEGETATION ANALYSIS  
(EVAPORATION, CLOUDS, AERIALITY)

STILL OUTWAYS BW.

TIME FRAME?

WE NEED TO BE IN  
ORDER 1 OF ORDER 2  
(AUG - SEPT '96)



## Presentation Schedule

Friday Session 6 9:45 pm to 10:45 pm

### Digital Orthos - Where Do They Come From?

William Johnson, Jr  
Dallas Aerial Survey.

Coral Room 1

Digital Orthophotography is the link between the visual reference capabilities of an aerial photograph and the accuracy of vector-based mapping. We will discuss the creation of a digital orthophotograph as well as explore its various uses and capabilities.

Bill has definitely come from the ground up with aerial photography; starting as a surveyor's assistant and rodsman to now the Vice-President of Dallas Aerial Survey. Bill received his BBA from Baylor University, has his Private Pilot's License, and oversees all mapping production for Dallas Aerial Survey including projects such as the cities of Grand Prairie and North Richland Hills.

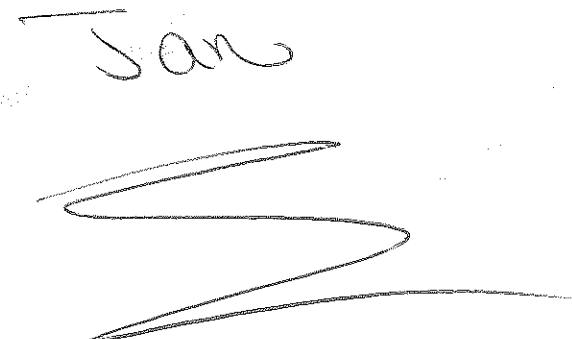
### Doctors Office - Continues

ESRI Technical Staff

Coral Room 2

Got a problem? Not sure how a particular feature could be used to make your job easier? Here's your chance to get all the answers from the people that know Arc/Info and all of the ESRI products the best. Stop by at any time during this sessions and talk with one of the GIS "Doctors" on hand.

San



## Presentation Schedule

Friday Session 6 9:45 pm to 10:45 pm

### Implementing a GIS : A Management Perspective

Richard Rhodes  
District Director  
Ellis County Appraisal District

Coral Room 3

The presentation outlines the major management considerations for each stage of a GIS project. Data will be presented which reflects anticipated and actual inputs of time, capital, and labor for the pre and post development stages of the project. Special considerations will be given to strategies for avoiding problems which are 'project killers' and 'budget busters'.

### A Brief Introduction to Avenue

Rob Burke  
ESRI Redlands  
Technical Staff

Coral Room 5

ESRI Technical Session involving the basics of Avenue Programming.





3305 Hancock Drive  
Austin, Texas 78731  
Phone: 512-459-9027  
Fax: 512-452-1655  
EMail: jpa@io.com  
WWW: http://www.wptc.com

**NOT!**  
**ArcView/Avenue Programmer's Reference**  
Class Hierarchy, Quick Reference  
and 101 Scripts  
Written by ...  
John Alexander, Amir H. Razavi and Valerie Warwick  
Available: **NOW!!!**

This is one of our High Mountain Press Scripts.  
It bundles up multiple Avenue programs in a  
single script for simplified installation. Two  
samples in the comments at the end show you  
how to put scripts in this routine for distribution.  
We use it all the time to email scripts to  
coworkers on projects.

```
t = "EmailScripts"
d = av.GetActiveDoc.GetWin.GetNext.GetOwner
if (d.Is(SED).Not) then
  MsgBox.Error("Active Document" ++ d.GetName ++ "is not a SED",t)
exit
end
source = d.GetSource.AsTokens(nl)
sedFlag = 0
newSEdFlag = 0
lineCount = 0
for each x in source
  if (x.Contains("SEd Section")) then
    Read to start of SEd Section contained in this file
    sedFlag = 1
  end
  if ((x.Left(7) = "Start") and (sedFlag = 1)) then
    Initialize newSource and SetName for the SEd, the name is after the colon.
    newSEd = SEd.Make
    n = x.AsTokens(":").Get(1)
    newSEd.SetName(n)
    newSEdFlag = 1
    newSource = "" + n + nl
    lineCount = 0
  end
  if ((x.Left(8) = "Finish") and (sedFlag = 1)) then
    Close SEd, Install and Compile
    newSEd.SetSource(newSource)
    newSEd.Compile
    newSEdFlag = 0
  end
  if ((sedFlag = 1) and (newSEdFlag = 1)) then
    Strip out comment and add to source for this SEd
    if (lineCount > 0) then
      newSource = newSource + nl + x.Right(x.Count - 1)
    end
    lineCount = lineCount + 1
  end
end
end
SEd Section
Start: Test1
MsgBox.Info("First Script", "wptc.Test1")
Finish: Test1
Start: Test2
lst = av.GetProject.GetDocs
ch = MsgBox.List(lst, "Pick a Doc", "foo1")
if (ch = nil) then exit end
ch.GetWin.Open
```

wptc - we provide technical consulting

## GIS Training Schedule

### Introduction to ArcView and Avenue

wptc's 2 day course covering the basics of ArcView software and the Avenue development language. 1 1/2 days of ArcView instruction including working with ArcView documents (View, Tables, Charts, Layouts, Scripts), user interface (DocGUI's), Geocoding, Address Matching, Hot Links, and data sources and management. 1/2 day of Avenue development language instruction including customization of user interface, startup and shutdown procedures and writing and compiling scripts.

Date	Time	Cost	Location
October 3-4, 1995	8:30am-5:00pm	\$395.00	wptc, Austin
October 16-17, 1995	8:30am-5:00pm	\$395.00	wptc, Austin
November 8-9, 1995	8:30am-5:00pm	\$395.00	wptc, Austin
December 12-13, 1995	8:30am-5:00pm	\$395.00	wptc, Austin
January 9-10, 1996	8:30am-5:00pm	\$395.00	wptc, Austin

### Writing ArcView Applications with Avenue

wptc's 3 day course aimed at the serious ArcView developer. Students will learn to navigate the ArcView class hierarchy, to write Avenue scripts and to design high quality user interfaces. The course is divided into six lectures and fourteen exercise topics. The instruction concentrates on giving the student a significant amount of experience (more than two-thirds of the class time) actually writing Avenue code.

Date	Time	Cost	Location
October 18-20, 1995	8:30am-5:00pm	\$695.00	wptc, Austin
January 16-18, 1996	8:30am-5:00pm	\$695.00	wptc, Austin

### ArcView InterApplication Communication & Advanced User Interface Design

wptc's 1 day course covering the ArcView InterApplication Communication and Advanced User Interface Design. Course includes 4 lectures, 16 Hands-On Annotated Exercises and Answer Book.

Date	Time	Cost	Location
October 10, 1995	8:30am-5:00pm	\$395.00	wptc, Austin
January 19, 1996	8:30am-5:00pm	\$395.00	wptc, Austin

Call wptc at 1-800-GIS-WPTC for more information. Contact us by fax at 512-452-1655, e-mail at jpa@io.com, or phone 512-459-9027.  
wptc accepts MasterCard, Visa, check/cash! Pre-registration is required and payment is due before class.  
wptc reserves the right to cancel classes within 24 hours of class date due to lack of minimum enrollment.

...welcoming people to cyberspace...  
Internet-WWW-Training-Consulting

Regularly scheduled introductory classes in  
Using a browser-E-mail-Searching the Web

Developer classes in  
HTML-PERL-Java-AcrobatN-etscape2.x

## Business Meeting / Lunch

Our general business meeting will cover topics such as officer elections, charter ammendments, possible name changes and other business of importance.

Lunch will be served to your table during the meeting.

## A Special Message From Scott Sires

As many of you know, I have been the Conference Coordinator for the past six years for the TAIUG. As a Co-Founder of this group, I have seen the organization grow from a handful to a hotel full and I am proud of every one of you for participating in this wonderful group. The TAIUG is destined for great things, and I plan on being there every step of the way.

Getting this show established to the point that we have regular participation of vendors and a steady attendance has been a goal of mine, and I have reached that goal. So now I feel that it is time I step aside and let another member take on the job of Conference Coordinator. I'm sure that whoever takes on this responsibility will do a fantastic job and add their own personal touch to the conference and make it even better. And I will of course be there for any assistance that person, or any of the TAIUG members need.

Each year, as the conference rolls around, I am amazed at the support our members give me. If things start to look a little shaky, someone always shows up to help steady the course. I say to the members 'Keep up that level of support and you will see it emerge into a Users Group second to none'.

In closing, I want to thank everyone who has trusted me over the last six years to create our most visible event. I hope you have enjoyed it, because I know I have!

Good Luck, Best Wishes  
and Thank You,

J. Scott Sires



### A Brief Introduction

*"May you live in interesting times."*  
Ancient Chinese Proverb  
(both a blessing and a curse)

Interesting times indeed. The world is changing at an unprecedented pace. Nowhere is this pace more keenly felt than in the halls of business. In a world that is "downsizing", "globalizing", and "partnerizing", windows of opportunity slam shut in an instant. Core competencies are being emphasized. Efficiency, flexibility, and responsiveness are the order of the day. The struggle for competitive advantage provides the impetus for change. Increasingly, information technology provides the means.

At **ICONICS**, we do one thing and we do it extremely well. We provide our clients with the resources needed to derive a competitive advantage from rapid and constant change. Our focus is information technology; more specifically, providing information technology based solutions to real world business problems. We provide our clients with a variable cost alternative to increasing their staffing levels or acquiring and training new skill sets for limited duration projects. Our services range from process review and redesign to turnkey application development. Our rates are fair and our people are, without exception, leaders in their individual fields of technical expertise.

At **ICONICS**, we understand that respect and trust are earned, not given. We build relationships over time, one assignment at a time.

Change - a blessing or a curse? It all depends on your team!

### Our Services

#### G.I.S.

- ARC/Info and complementing suite of ESRI desktop tools
- Site Selection
- AM/FM
- Allocation and Distribution
- Cartographic Output

#### Business Consulting Services

- Business Process Review and Redesign  
(Workflow analysis and design, bench marking, cycle analysis)
- System Selection and implementation Services  
(Business Systems, Document Imaging, COLD, groupware)
- Technical Services  
(client/server migration planning, change management, technical infrastructure development)

#### Technical Resources

**ICONICS** provides highly qualified contract personnel on an as-needed basis for application development, database administration, and network maintenance.

## Special Meetings

### Round Table Discussions 1:15 pm - 4:30pm

This event involves attendees going to a topic table of their choice and discussing that topic for 15 minutes, then rotating to another topic table. The topics and table hosts are:

UNIX  
PC Arc/Info  
ArcView 2  
ArcPlot  
ArcEdit  
AML  
GPS

### Special Interest Groups

After several rounds of the previous software oriented topics, the topics and hosts will change to SIG related topics. These will be :

Transportation  
Appraisal Districts  
911  
Municipal Government  
County Government  
State Government