

16th Annual User Conference



Conference Guide

Welcome From The President

It is an exciting time for SCAUG and its membership. As SCAUG enters its sixteenth year as an organization, we can all be proud of the accomplishments achieved by past and present SCAUG members.

While GIS has been in the conscious of the public and news media, the natural disasters that occurred over the past year have placed our profession in the forefront in terms of public safety and recovery. With this new found awareness the SCAUG family has a unique opportunity to demonstrate the power of GIS to an eager and excited audience.

This year's conference will create unique opportunities to share, collaborate and address the challenges we face everyday in GIS. One of this year's challenges is the adoption of a new charter that will govern SCAUG. The charter has been revised to accommodate recent changes, while still looking towards the future.

On behalf of the SCAUG Board, it is my pleasure to welcome you to Fort Worth to gain insight from those in our GIS community. Join SCAUG to prepare yourself for the challenges ahead!

Special Thanks

A special thanks to these organizations for helping make this year's conference a success!

Bexar Appraisal District

Brazos River Authority

City of Ardmore

City of Fort Worth

City of Longview

City of McKinney

City of Plano

City of San Antonio

City of Tyler

Devon Energy Corporation

Geographic Computer Technologies

Mississippi Automated Resource Information System

Oklahoma Conservation Commission

Texas Department of State Health Services



Table of Contents

2005 -2006 SCAUG Officers

President

Joe Chapa
City of San Antonio

Vice President

Tessa Allberg
City of McKinney

Treasurer

Garri Grossi
City of Plano

Conference Coordinator

Elizabeth Young
City of Fort Worth

Asst Conference Coordinator

Vincent Herrera
City of San Antonio

Secretary

Cindy Tuttle
Texas Department of State Health Services

Membership Coordinator

Shellie Willoughby
Oklahoma Conservation Commission

Publications Coordinator

Heather Nick
City of Tyler

Asst Publications Coordinator

Justin Cure
City of Longview

Texas Representative

Lydia Saucedo
Bexar Appraisal District

Oklahoma Representative

Charles Brady
City of Ardmore

Louisiana Representative

Brad Daugherty
NTB Associates, Inc.

Mississippi Representative

Neal Smith
MARIS

Past President

Kevin Koon
Devon Energy Corporation

ESRI Representative

Sheila Sullivan
ESRI



Week at a Glance

Conference Information

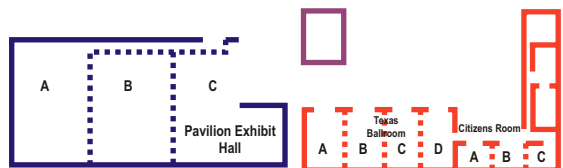
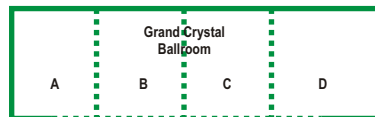
Keynote Speaker

User Presentation Guide

ESRI Session Guide

Presentation Abstracts

Participating Vendors



815 Main Street
Fort Worth, Texas 76102



Week at a Glance - Training

TRAINING - Monday, February 6th - Tuesday, February 7th

8:00am - 5:00 pm	Introduction to Multi-User Geodatabases	Texas B
8:00am - 5:00 pm	Geoprocessing with Scripts	Texas C
8:00am - 5:00 pm	GIS Analysis for ArcMap Users	Texas D

Introduction to Multi-User Geodatabases (February 6th - 7th)

Multuser geodatabases use ArcSDE software and a database management system (DBMS) to store large amounts of GIS data that many users need to access. This course provides a comprehensive introduction to ArcSDE and its powerful capabilities for managing the way users interact with GIS data. Participants learn fundamental ArcSDE and DBMS architecture concepts and learn how ArcGIS Desktop clients access and manipulate data stored in a multuser geodatabase. The course discusses geodatabase behavior in the context of a versioned environment, fundamental versioning workflow procedures, and client-side performance issues. This course does not focus on a specific supported database management system (DBMS). This course is taught using an ArcInfo license of ArcGIS since much of the geodatabase functionality taught in the course requires ArcInfo.

Geoprocessing with Scripts (February 6th - 7th)

One of the aspects of the ArcGIS 9 geoprocessing framework is the scripting environment. In this two-day class, students will learn about the Python scripting language and how it can be used to access the geoprocessing functionality in ArcGIS 9. Participants begin the course by understanding Python scripting syntax; progress to writing scripts for geoprocessing operations; and finish by incorporating Python scripts as tools in ArcToolbox. Scripting is easy to learn, so introductory-level programmers are welcome. However, some knowledge of fundamental programming techniques, such as loops and conditional statements, is required.

GIS Analysis for ArcMap Users (February 6th - 7th)

This two day class will focus participants on the task of performing spatial analysis with the tools available in ArcMAP and ArcToolbox. Hands-on exercises will highlight the analysis tools and spatial statistics tools, building a better understanding of how and why to use these tools, as well as knowledge of their statistical importance. Attendees should have a prior knowledge of ArcMAP and working with GIS data sets.

TRAINING - Thursday, February 9th

8:00am - 5:00 pm	Advanced ArcSDE Administration	Citizen A
1:30 pm - 5:00 pm	Model Builder Workshop	Texas A

Advanced ArcSDE Administration (February 9th)

The Advanced ArcSDE Administration class will cover high-end administration of ArcSDE in a Microsoft SQL Server environment, including multi-instance and multi-database designs. User will come away from the seminar understanding the potential problems and successes experienced in deploying ArcSDE into an enterprise environment. This class is an advanced class and users should have Microsoft SQL Server and ArcSDE administration experience.

Model Builder (February 9th)

New to ArcGIS 9.x, the Model Builder is a graphically oriented tool that allows users to string together tools and process from ArcToolbox. It can be used for automating one-time tasks, or building complex applications - and everything in between. This workshop will include hands-on exercises instructing the participants on the basics of model building, setting model parameters, linking models together, and making small applications. Attendees should have a prior knowledge of ArcMAP and ArcToolbox.



Week at a Glance

DAY ONE - Wednesday 8th

8:30 am - 10:30 am	Opening Breakfast & Keynote	Crystal D
10:30 am - 12:00 pm	Vendor Bingo	Promenade
12:00 pm - 8:00 pm	Vendor Exhibits	Promenade
12:00 pm - 1:00 pm	Lunch on your own	
1:30 pm - 2:30 pm	User Presentations Session I	Texas B, C, & D
2:30 pm - 3:30 pm	User Presentations Session II	Texas B, C, & D
3:30 pm - 4:30 pm	User Presentations Session II	Texas B, C, & D
5:00 pm - 8:00 pm	Vendor Reception	Promenade
5:00 pm - 8:00 pm	Map Gallery	Promenade
5:00 pm - 8:00 pm	Fastest Map In The West	Promenade
5:00 pm - 8:00 pm	Application Competition	Promenade

DAY TWO - Thursday 9th

8:30 am - 5:00 pm	Panel Discussions	Texas B
8:30 am - 9:30 am	User Presentations Session I	Texas C & D
9:30 am - 10:00 am	Break	
10:00 am - 11:00 am	User Presentations Session II	Texas C & D
11:00 am - 12:00 pm	User Presentations Session III	Texas C & D
12:00 pm - 1:30 pm	Lunch on your own	
1:30 pm - 5:00 pm	City of Fort Worth Walking Tour	Meet in Hotel Lobby
1:30 pm - 5:00 pm	Geocaching Challenge	Meet in Hotel Lobby
6:00 pm - 10:00 pm	Cowtown Casino Social	Crystal C & D
10:00 pm - ???	Cowtown Poker Pub Crawl	Downtown Fort Worth

DAY THREE - Friday 10th

8:30 am - 10:00 am	ESRI Technical Session I	Texas A, B, C, & D
10:00 am - 11:30 am	ESRI Technical Session II	Texas A, B, C, & D
11:30 am - 1:30 pm	Lunch and Conference Awards	Crystal B



Texas • Oklahoma • Louisiana • Mississippi



Conference Information

Opening Breakfast & Keynote

Join us **Wednesday, February 8th** in **Crystal D Ballroom** for breakfast with **Darrel McDonald**, Assistance Director of Education and Training for the Columbia Regional Geospatial Service Center! The **K-12 Student Competition Winners** will be announced as well as the newly elected **2006-2007 SCAUG Officers** and we will also be introduced to our vendor participants and their companies during the Vendor Spotlight at the Opening Breakfast.

Vendor Hall & Reception

Vendors will be exhibiting all of their newest technology and services from 10:30am to 8:00pm on Wednesday, February 8th in the Promenade. Stop by to check out the latest and greatest products in the industry, and a vendor quite possibly may give you a **"FREE DRINK"** token to redeem at the **Vendor Reception**. Enjoy the fun, food and drinks at the Vendor Reception from 5:00pm to 8:00pm on Wednesday, February 8th also in the Promenade. Don't forget your bingo game card in your conference packet, because you just may be the lucky winner at our traditional game of **Vendor Bingo!!!**

Map Gallery & Applications Contest

Please plan to attend the Map Gallery and Application Contest on Wednesday, February 8th in the Promenade from 5:00pm to 8:00pm. Cast your vote with the ballot in your conference packet. Your votes will determine the winners of some very nice prizes.

Fastest Map in the West

Can you out-draw the competition? Participate in our **Fastest Map in the West Competition!** Participants are given 10 minutes to make the best map possible to help keep the City in order!

\$1 Entry Fee... Winner takes all!

Walking Tour

On **Thursday February 9, 2006** take the opportunity to see how the City of Fort Worth's GIS and Emergency Operations Center interact in a simulated emergency and how the IT Solutions GIS Division coordinates and facilitates the Fort Worth's geographic data in both an ArcGIS environment and in providing web-based services.

Also take the exciting opportunity to be guided on a tour of historic downtown Fort Worth. See some of the diverse architecture and hear some of the wild history of "The City Where the West Begins"

Geocaching Event

Participate in the first SCAUG Geocaching event, **Thursday February 9, 2006**. What better way to explore historic downtown Fort Worth than to go on a scavenger hunt? **GeoCaching** is a 21st century version of the scavenger hunt with **GPS users** navigating through downtown while discovering historic, famous, or just interesting sites. Once you've collected all the items, you will be registered in a drawing for **prizes!**

Cowtown Casino Social

Join us **Thursday evening, February 9th, 6:00pm-10:00pm** in the Crystal C & D Ballroom for the Cowtown Casino Social, in the heart of Fort Worth's historic "Entertainment" district - Hell's Half-Acre. You can fill up on some BBQ at the chuck wagon, converse with fellow cowhands, or wash down the trail dust at the saloon. Try your luck at blackjack, Texas Hold'em, craps or roulette. No money will change hands but plenty of prizes will be available if the cards are right!

Lunch and Conference Awards

Our business meeting will be held during the Awards Lunch on **Friday, February 10th at 11:30am to 1:30pm** in the Crystal B Ballroom. After lunch we will have some important topics to discuss, including a few words from our Regional ESRI Representative, Sheila Sullivan, winners from the Map Gallery & Applications Contest!



Keynote Speaker

Dr. Darrel L. McDonald

Dr. Darrel McDonald is the Assistant Director of Education and Training for the Columbia Regional Geospatial Service Center at Stephen F. Austin State University



Dr. McDonald received his Ph.D. in Geography from Texas A&M University. His principal functions with the Columbia Center involve developing internship opportunities for students in geospatial sciences and training modules for local first responders. He also is a Professor in the Arthur Temple College of Forestry and Agriculture. Prior to joining the Columbia Center management team, he served as coordinator of Geography and HUES GIS Laboratory. In that capacity, the HUES GIS Lab began a cooperative GIS infrastructure project with the City of Nacogdoches. Although he is mainly involved with geospatial education, he has long standing interests in cultural biography topics and in historical landscape visualization and interpretation focused on Galveston plantscapes and South Texas sacred landscapes. He has been involved with the remote sensing community serving as the Mid-South Region's president 2003-2004. In addition, he has served as a member of the Association of American Geographers GIS standards committee. Further, McDonald is actively involved in outreach to public schools relying on his Professor World character to encourage young minds to embrace learning and geospatial sciences. Among his latest publications include working with the Museum of East Texas, Lufkin, Texas on a children's exhibit entitled, "Where Are We and How Do We Know?"

Address Topic

THE COLUMBIA REGIONAL GEOSPATIAL SERVICE CENTER SYSTEM: A model for rural geospatial support for the nation

The Columbia Regional Geospatial Service Center System (Texas) represents a unique approach to regional geospatial support for emergency response and planning, economic development and resource management. The system had its origins with the Forest Resources Institute (FRI), funded initially through a startup grant from the T.L.L. Temple Foundation in 1997. The idea was to "level the playing field" for traditionally under served rural communities, primarily for economic development and resource management. FRI's geospatial support system evolved to include regional emergency planning and response. From the outset, we took a bottom-up approach to serving our constituency, especially in time of emergency. This concept was tested during the Shuttle Columbia disaster and Hurricane Rita. Staff members were able to begin their mapping in only 22 minutes. Congress funded establishment and support of the prototype system in 2005 and 2006. The system now includes the University of Texas at El Paso and the Texas Natural Resources Information System, and Texas Tech University . Structure and functionality of the system will be presented.







User Presentation Guide

Wednesday, February 8th

Texas B, C, & D

Session I 1:30pm - 2:30pm	Session II 2:30pm - 3:30pm	Session III 3:30pm - 4:30pm
Tred Riggs Developing Geo-Spatial Internet Map Applications Nirav Shah Still thinking about Migrating to ArcSDE? Do's and Don'ts about Migrating to ArcSDE	William Holland Enterprise GeoSpatial Data Integration Teri Landrum Automating Zoning and Land Use Management With GIS	Dan Allee, Andrew Kissel, Jody Lampin, and Jan Funderburgh Multi Agency GIS: Pulling All Entities Together

Thursday, February 9th

Texas C & D

Session I 8:30am - 9:30am	Session II 10:00am - 11:00am	Session III 11:00am - 12:00pm
Ty Summerville Texas Historic Overlay: 300 Years of Spatially Enabled Historic Maps Erdenechimeg Eldev-Ochir Migration and Economic Changes in Mississippi 1995-2000	Talbot Brooks Hurricane Katrina Jenni Hoang Zoo Horticulture Management Application Using Web Services and ArcGIS Server	Michael J. Kazda Design, Administration, and Analysis of a Municipal Needs Assessment James Mallory Oklahoma County Assessor's Public Access/GIS Website

Texas D

Session IV 1:30pm - 2:30pm	Session V 3:00pm - 4:00pm	Session VI 4:00pm - 5:00pm
Beni Patel GIS Comes to the Rescue	Laura Carr Creating a Doorway to Data: Web Portal Technology and GIS	Fernando De Vivo Streamlining Environmental Assessments with GIS

Texas B

PANEL DISCUSSIONS

Session I 8:30am - 10:00am	Session II 10:00am - 12:00pm	Session III 1:30pm - 3:00pm	Session IV 3:00pm - 5:00pm
ArcIMS	Emergency Response	Managing GIS	GISP



Friday, February 10th

Texas A

Texas B

Texas C

Texas D

Friday, February 10 8:30am - 11:30am	Friday, February 10 8:30am - 11:30am	Friday, February 10 8:30am - 11:30am	Friday, February 10 8:30am - 11:30am
What's New in ArcGIS 9.2 Desktop	Introducing ArcGIS Image Server	Taking GIS to the Web	Tips & Tricks in ArcGIS

Adam Pittman - ESRI Technical Team

What's New in ArcGIS 9.2 Desktop: ArcGIS 9.2 is a very exciting release! Topics covered will include new enhancements to the core product such as cartographic editing, table usability, animation, CAD data, and graphs & charts. Geodatabase enhancements will also be highlighted such as database replication, terrain, and historical archiving. ArcGIS 9.2 is the next major release of the ArcGIS product line and will be in beta at the time of the SCAUG conference.

Joseph "Brig" Bowles - ESRI Technical Team

Introducing ArcGIS Image Server: Image server is a new server product to be offered by ESRI. The product provides a rich capability to serve imagery while applying image processing steps to the raw data on-the-fly. In addition, the product allows file based imagery to be directly served without having to load or process the data first. Preprocessed data (eg. Ortho-imagery) can also be quickly served.

Reggie Romo - ESRI Technical Team

Tips & Tricks in ArcGIS: How much do you know about ArcGIS? Better stated, how much do you think you know? During this session we will share some of our favorite tips and tricks for ArcGIS Desktop. Think you know a trick that no one else does? Bring it along and share!

Dal Hunter - ESRI Technical Team

Taking GIS to the Web: The way in which GIS professionals interact with each other and their daily tasks has evolved amazingly fast. ESRI has some very exciting products and applications that can and will benefit you. Listed below are some of the products and applications that will be shown and discussed.

ArcGIS Explorer is a geospatial information viewer that offers a free, fast, fun, and easy-to-use way to view geographic information—in both 2D and 3D—while performing queries and analysis on the underlying data. ArcGIS Explorer integrates the rich world of GIS datasets and server-based geoprocessing applications. It does this by accessing the full GIS capabilities of ArcGIS Server including geoprocessing and 3D services. ArcGIS Explorer can also use data layers and services from ArcIMS and ArcWeb Services. It supports Open Geospatial Consortium WMS and Google KML data, making it open and interoperable.

The *ArcWeb Viewer* is a flash based ArcWeb Services client that not only looks fantastic but allows you geocode and route your own data.

ArcIMS 9.2 is a very exciting release. A number of enhancements have been made such as pinable and dockable GUI, "game-like" panning and zooming, new and fresh looking templates for quickly and easily creating sites, and the ability to customize your project in .NET or JAVA.

ArcGIS Server gives you the ability to access the building blocks of ArcGIS through a web browser. In a nut shell you have the ability to do very complex GIS analysis through a web browser. This is very exciting technology and we will spend time explaining this.



Presentation Abstracts

Wednesday, February 8th

Session I 1:30pm - 2:30pm

Developing Geo-Spatial Internet Map Applications

**Tred Riggs, Stephen F. Austin University
Nacodoches, TX
Wednesday 1:30 PM Texas C**

Bio: I coordinate geo-spatial efforts between the city and county of Nacogdoches and Stephen F. Austin State University, manage and develop Oracle GIS Databases for local entities, manage ArcSDE and ArcIMS, assist student and graduate assistants in GIS projects and help them develop their GIS and GPS skills utilizing ESRI, ERDAS Imagine and Trimble software.

Abstract: This paper documents the process of developing a geo-spatial Internet map application using the US Army Corps of Engineers (USACE) CampView application as an example. The specific objective of this paper is to discuss and evaluate selected IMS software, determine what an Internet CampView application should look like, document how to customize an ArcIMS application and to generate and document a USACE IMS application called CampView. Also information on where to find help on the Internet to develop and IMS.

Still thinking about Migrating to ArcSDE? Do's and Don'ts about Migrating to ArcSDE

**Nirav Shah, EI Technologies
Parker, CO
Wednesday 1:30 PM Texas D**

Bio: Nirav Shah is the president and founder of EI Technologies, a limited liability company founded in 1992. Nirav has an M.S. in Engineering from the University of Illinois at Urbana Champaign. He has authored over 20 publications on GIS and project management.

Abstract: This presentation discusses in detail how to go about in migrating to ArcSDE Enterprise Geodatabases environment. Issues related to database design, data migration, application design and application migration are discussed.



Presentation Abstracts

Wednesday, February 8th

Session II 2:30pm - 3:30pm

Enterprise GeoSpatial Data Integration: Using SAS and ESRI Technology to Consolidate Business Systems in Support of Domestic Security and Performance Management, A Case Study

**William Holland, GeoAnalytics
Chicago, IL
Wednesday 2:30 PM Texas C**

Bio: GeoAnalytics CEO William S. Holland is regarded nationally as an industry expert on information and technology policy, systems architectures, and the business and administrative aspects of information system implementation. He was a founder and Past-President of the National States Geographic Information Council (NSGIC) and was recently a member of the National Research Council Committee on Licensing Geographic Data and Services. A frequent author, Mr. Holland is currently a member of the Editorial Advisory Board of *GeoWorld* magazine. Prior to co-founding GeoAnalytics, Mr. Holland was the first Executive Director of the State of Wisconsin Land Information Board. Prior to that Mr. Holland was an attorney in private practice. Mr. Holland holds BS and MS degrees with academic honors in Agricultural Economics and was a Hunter Graduate Fellow at the University of Illinois. He was conferred, cum laude, a Juris Doctor from the Northern Illinois University College of Law.

Abstract: Food and agriculture have been identified as critical infrastructure for the security of our nation; and they're potential targets for terrorism. The Florida Department of Agriculture and Consumer Services (FDACS) is responsible for readiness in the event of both man-made and natural security threats that could involve agricultural-related human pathogens, animal or plant diseases and/or pests, adulteration, tampering or poisoning of foods, and the unauthorized use of agrichemical and agricultural products. In order to support this mission, the Department needed the capability to rapidly gain access to and apply information that exists throughout the Department. Through SAS and ESRI technologies, the department is implementing an enterprise level Geospatial Data Integration (GDI) system. The GDI system has helped create a consolidated data model that reconciles differing.

Automating Zoning and Land Use Case Management With GIS

**Teri Landrum, City of Grapevine
Grapevine, TX
Wednesday 2:30 PM Texas D**

Bio: Teri has 13 years experience in GIS. She can do everything from editing and map production to programming, administering and managing a GIS. Teri rocks!

Abstract: The City of Grapevine, TX, is a small but growing city located on the northern end of the Dallas/Fort Worth Metroplex. In 1999, John Jennery, the City IT Manager, with the backing of Assistant City Manager Bruno Rumbelow, successfully applied for an ESRI Local Government



Presentation Abstracts

Start-Up Grant. This case study will review how Grapevine was able to leverage the grant and create the foundation for what has blossomed into a comprehensive Enterprise GIS. Taking a closer look at one of the city's departments we will examine how the Planning Department utilized ArcObjects to automate the entire Zoning and Land Use Case Management process. The City of Grapevine is an outstanding example of how a GIS can flourish in a small city when it has dedicated, capable personnel and the backing of city administrators and department directors.

Wednesday, February 8th

Session III 3:30pm - 4:30pm

Multi Agency GIS: Pulling All Entities Together

**Dan Allee, City of Tyler; Andrew Kissel, Jody Lampin; Smith County Appraisal District;
Jan Funderburgh, Smith County 9-1-1
Tyler, TX
Wednesday 3:30 PM Texas D**

Bio: Dan Allee is the GIS Coordinator for the City of Tyler, Texas. Dan has been involved in GIS since 1987 and working with ESRI since 1990.

Jan Funderburgh has been employed by Smith County 9-1-1 District since 1986. Her present position is GIS/MIS Operations Manager.

Andrew Kissel is a GIS Analyst for the Smith County Appraisal District. Andrew was first introduced to GIS in early 2001.

Jody Lampin is a GIS Analyst for Smith County Appraisal District, and has been in the GIS field since 1995.

Abstract: So you work for a governmental entity and you probably need to either access or share a lot of your information with the other GIS entities in your county. You probably work well with the other entities, sharing information back and forth on CD's or via emails. Why not take this to the next level and create a single GIS while maintaining the uniqueness of each entity? Come and hear how the City of Tyler, Smith County 911 Communications District, Smith County Appraisal, and Smith County was able to combine all their GIS efforts into a single county-wide super GIS. We will be discussing strategy, pros, pitfalls, and how to make it all come together to create a better information database for all entities while reducing or eliminating cost and redundancy.



Presentation Abstracts

Thursday, February 9th

Session I 8:30am - 9:30am

Texas Historic Overlay: 300 Years of Spatially Enabled Historic Maps

Ty Summerville, PBS&J
Austin, TX
Thursday 8:30 AM Texas C

Abstract: The Texas Historic Overlay project is managed by the Environmental Affairs Division of the Texas Department of Transportation (TxDOT) and executed by PBS&J, a private science and engineering firm. The project involves the research, acquisition, digitization and spatial registration of historic maps for the eastern half of Texas. 3,000 maps were used to complete the data set ranging in date from 1690 to 1990. The completed map images and vectorized extents are used in GIS software to investigate and predict the location of protected and potentially protected historic features that could impact highway development projects. Use of the data saves money and improves responsiveness by compiling data that would otherwise be researched and prepared per project or missed entirely. Key automation tools developed for the project include PAAG, a tool that calculates horizontal positional accuracy of registered maps and the Metadata Miner, an application that automates the generation of metadata.

Migration and Economic Changes in Mississippi 1995-2000

Erdenechimeg Eldev-Ochir, Mississippi State University Doctoral Student
Starkville, MS
Thursday 8:30 AM Texas D

Bio: Erdenechimeg is a Mississippi State University Student Currently pursuing her doctoral degree in Applied Economics. Her interest are in Regional and Demographic Economics. She enjoys using ArcGIS towards her economics study.

Abstract: The purpose of this project is to investigate the relationship between migration and economic changes for the state of Mississippi and for non-metropolitan areas in Mississippi from 1995 to 2000. In order to investigate the relationship, a 4 simultaneous equations model and GIS raster modeling will be employed in which the dependant variables are in-migration, out-migration, wage and salary employment growth, and wage and salary disbursement growth. The models are concerned with the determinants of migration and consequences of migration. The explanatory variables for models of demographic changes are composed of economic growth, socioeconomic, demographic, and cost characteristics. The explanatory variables for models of economic changes are composed of migratory factors, socioeconomic, demographic, and cost characteristics.

The 4 simultaneous equations model was estimated using the 3 Stage Least Square techniques. The results for the equations and GIS raster model suggest that migration is affected by economic change and effects economic changes.



Presentation Abstracts

Thursday, February 9th

Session II 10:00am - 11:00am

Hurricane Katrina

**Talbot Brooks, Delta State University
Cleveland, MS
Thursday 10:00 AM Texas C**

Bio: Talbot Brooks is the director of the Center for Interdisciplinary Geospatial Information Technology at Delta State University located in Cleveland, MS.

Abstract: The Hurricane Katrina event in Mississippi was the first large-scale natural disasters in the region for which Geospatial Information Technologies (GIT) played a significant role. The Mississippi GIT response was unique because it a) was not an original part of any hazard mitigation plan; b) was implemented using nearly 100% volunteer resources and services; and c) it was present at nearly all operational levels. These accomplishments were only possible through integration of GIT activities within the operational matrices for MEMA, FEMA, and MCDEMA. Activities, management strategies, and key lessons learned will be presented and discussed.

Zoo Horticulture Management Application using Web Services and ArcGIS Server

**Jenni Hoang, City of Oklahoma City
Oklahoma City, OK
Thursday 10:00 AM Texas D**

Bio: Jenni Hoang is a GIS analyst for the City of Oklahoma City.

Abstract: Previously the Oklahoma City Zoo maintained information about their horticulture assets in a dated DOS based DBASE 3 database. This database did not meet their needs plant management needs and provided no GIS reference to the location of the plant on the Zoo property.

The City's GIS team developed an ArcGIS Server based horticulture management application for the Oklahoma City Zoo. This application allows the Zoo to maintain horticulture asset data in the City's enterprise GIS system through a web base client interface. The user interface was developed using ASP.Net and requires no client installation. With the new application and spatial information the Zoo is able to more effectively manage their horticulture assets.



Presentation Abstracts

Thursday, February 9th

Session III 11:00am - 12:00pm

Design, Administration, and Analysis of a Municipal Needs Assessment: Innovative Use of GIS to Assure rReliability

**Michael J. Kazda, City of Ft Worth Health Department
Fort Worth, TX
Thursday 11:00 AM Texas C**

Bio: Michael Kazda has worked as an epidemiologist since 1998. He currently works with the Fort Worth Public Health Department as an epidemiologist and GIS analyst.

Abstract: To ensure acquisition of a highly reliable and randomly distributed sample of a diverse urban population and allow for small geographic area analysis of disease prevalence data, the City of Fort Worth Public Health Department utilized a geographic information system (GIS) in orchestrating recent community needs assessment efforts. Sampling frames were defined using demographic and housing data layers in a GIS. Sample size determinations were calculated to assure representative samples for different geographic strata of the resident population. Collection of location data at the time of the 3,361 face-to-face assessment interviews allowed for the association of reliable geographic data with measures of health conditions and behaviors. Incorporating a spatial component in analyses of mortality and needs assessment data allows efficient integration of geographically concordant demographic and socio-economic data available from the most recent census. Accomplishing this through the GIS platform increases the relevance of data to specific populations by allowing stratification by geographic areas at the neighborhood level as well as other strata defined by socio-cultural conventions. Additionally, it enables the production of compelling visual representations of data easily understood by policy makers and citizens. Further, an important strength of this approach is the flexibility afforded by the capability to stratify these data to adjust for changing geographic boundaries. Spatial analysis of morbidity and mortality combined with the rich data available regarding the underlying population permits the targeting of culturally and linguistically relevant interventions to populations most affected and results in the efficient delivery of essential services.

Oklahoma County Assessor's Public Access / GIS Website

**James Mallory and Michael Morrison, Oklahoma County Assessor
Oklahoma City, OK
Thursday 11:00 PM Texas D**

Bio: James Mallory, GIS Director and Mike Morrison, Webmaster / Assistant Comptroller are employed with the Oklahoma County Assessor's Office. James is a member of IAAO (International Association of Assessing Officers) over 20 years and URISA (Urban and Regional Information Systems Association). Their Office received a 2005 ESRI Special Achievement in GIS Award.

Abstract: The Oklahoma County Assessor's Office had a goal to integrate our public access system and our CAMA system (Computer Assisted Mass Appraisal), with our GIS data inside our



Presentation Abstracts

ArcIMS site. To provide user-friendly applications allowing our users to access and output GIS layers, orthophotos, assessment data, ownership information, building attributes, property descriptions, sales data and more. The use of GIS maps, aerials and assessment data is crucial for the use of local Governments and the community in regards to emergency management, planning, economic development, real estate trends, ownership information and more. By integrating our CAMA data with our GIS data and creating a public access system and ArcIMS site that communicates securely and in real time with "live" data, our users can now access this information anytime anywhere on the internet. Oklahoma County uses ArcSDE / SQL Server to manage our spatial data. GIS technicians use ArcInfo 9.0, the general staff accesses our data through our CAMA system and ArcIMS site. We use Geocortex's IMF application to output our GIS layers. We also use FME conversion software to covert CAD files to ESRI formats.

Thursday, February 9th

Session IV 1:30pm - 2:30pm

GIS Comes to the Rescue

**Beni Patel, Tessellations
The Woodlands, TX
Thursday 1:30 PM Texas D**

Bio: Beni Patel has been working with ESRI software since 1988. She has been an ESRI Authorized Training Partner since 1996 and has taught several hundred students in various GIS classes. Beni taught at the University of Houston's Geosciences Departments for 8 years, as well as teaching in many industry courses. She has extensive experience in developing custom courses for clients. She also provides consulting services in GIS and remote sensing, litigation support, and expert witness. She has designed and implemented several GIS systems for local governments and the private industry. Has experience in both application development for ArcGIS desktop and ArcIMS. Her expertise lies in developing models using Spatial Analyst.

Abstract: GISCorps provided volunteers to the Mississippi Emergency Management Agency to help with the GIS for Katrina response activities. This is a personal account of how the GIS volunteers helped MEMA and other governmental agencies.

Thursday, February 9th

Session V 3:00pm - 4:00pm

Creating a Doorway to Data: Web Portal Technology and GIS

**Laura Carr, CDM
Fort Worth, TX
Thursday 3:00 PM Texas D**

Bio: Laura Carr is the GIS Project Manager for CDM's Ft. Worth office. She has been with CDM since September of 2005. She has ten years experience with GIS working in both the private and



Presentation Abstracts

public sectors. Her projects have ranged from digitizing, data conversion, application development, and project management.

While Laura loves GIS her additional hobbies include rock climbing, working out at the gym and partying hard with all of her buddies.

Abstract: When launching a new GIS system for your client presenting data in a format that guarantees non-technical users will access the system is key. A web portal provides these users a menu driven work environment and a personalized interface that allows easy access to stored reports, graphs, and maps. It also provides a starting point for entry into the GIS system. This concept can resolve issues that non-technical users typically experience such as the complexity to learn and understand GIS data retrieval methods.

CDM is utilizing web portal technology for a revitalization effort in Ft. Worth, Texas. The goal of the portal is to provide stakeholders, generally classified as non-technical users, entrance to the project data management system. Since the portal retrieves data from a centralized database, this improves project collaboration and communication by ensuring that everyone is looking at the same information.

Thursday, February 9th

Session VI 4:00pm - 5:00pm

Streamlining Environmental Assessments with GIS

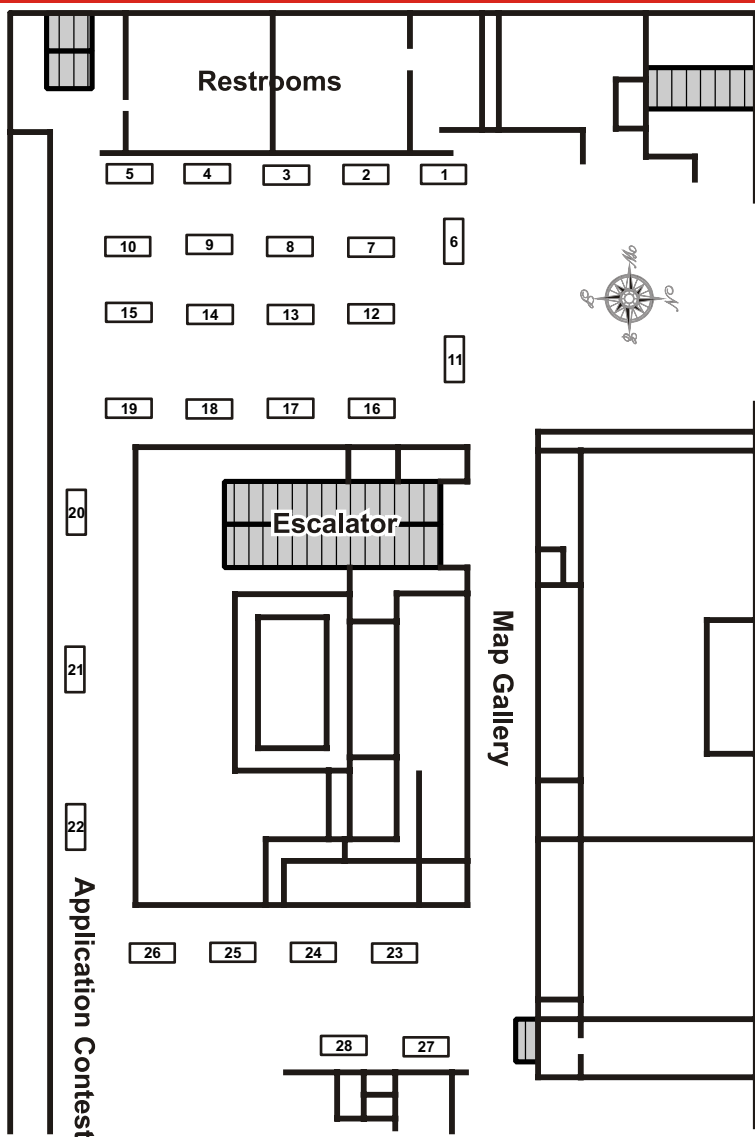
Fernando De Vivo, CDM
Fort Worth, TX
Thursday 4:00 PM Texas D

Bio: Fernando is a GIS Analyst in CDM's Fort Worth Office. He has over 3 years of experience working in a wide range of projects for public and private sector clients.

Abstract: Environmental site assessments are conducted to gather valuable information regarding the potential presence of contaminants at a particular location. GIS facilitates this process by providing the tools to automate and structure data collection, resulting in a reduced time spent performing manual input, increased data quality, and improved reporting capabilities.



Vendor Exhibit



Vendor Sponsorship

Brunch

- Navteq
- Western Data Systems

Social

- PBS&J

Vendor Reception

- CDM, Inc.
- RouteSmart

3 Breaks

- NTB Associates, Inc.



Vendor Exhibit

1



2



3



4



5



6



7



8



El Technologies, LLC

9



10

CarteGraph

11



12



13



14



Moore Norman Technology Center

15



16



17



18



19



20



21



22



23



24



25



26



27



28



Not featured in Vendor Hall



GIS SERVICES

- ▶ GIS Data Development
- ▶ GIS Master Plans
- ▶ GIS Outsourcing & Staffing
- ▶ GIS Assessments
- ▶ GIS Application Development
 - ➔ Web-Based
 - ➔ Desktop
- ▶ GIS Web Hosting
- ▶ GIS Training & Support

Helping Clients Provide Access to

**Geographical
Information**

to More People, at a Lower Cost, via the

Internet and Intranet

**Our Clients Are
Spatial™**



ATS
www.ats-us.com
972-745-3444

Cityworks®

Works the way your city works.

Cityworks is a powerful, flexible and affordable GIS-based Asset Maintenance Management System for Public Works and Utilities. Built on ESRI's ArcGIS technology, users can manage assets, work activities and customer needs.

Azteca Systems, Inc.
801.523.2751
info@azteca.com
www.azteca.com



Baker

ChallengeUs.

Bohannon ▲ Huston

CarteGraph

Better Government

CDM

777 Taylor Street, Suite 1050
Fort Worth, Texas 76102
(817) 332-8727
(817) 332-6870

listen.think.deliver

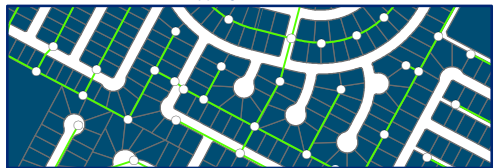
Providing Data Management Solutions



Services Provided

- * GPS Data Collection
- * GIS Consulting
- * Data Conversion
- * Complete LIDAR Services
- * Aerial Mapping
- * 3D Laser Scanning
- * Decision Support
- * ESRI Software Sales and Training

Mapping Your World



710 Buffalo Street, Suite 700
Corpus Christi, Texas 78401
(361) 888-5676

www.dmslp.com

Migrating GIS Data to Geodatabase?

We can help!

Let us migrate your data using our proprietary ArcObjects application.

El Technologies, LLC

19750 E. Parker Square Dr., Suite 100
Parker, CO 80134
(720) 851-1717
www.eitek.com

Envision it



Plan it

©

Implement it

Intelligent Maps at Work

True Automation's GIS Services include:

- Experienced Consulting
- Broad Project Management
- GIS Product Development
- Customized Training
- Industry Standard Data Development
- Detailed Data Maintenance
- Cama & GIS Integration



Named One of Texas Crescent's
Technology Fast 50 by Deloitte and Touche

Contact Us Today!

972.881.1858

sales@trueautomation.com

Visit us on the web: www.trueautomation.com



2004 ESRI Business
Partner of the Year

True Automation, Inc.
Experience the efficiency of True Automation, Inc.

2600 Technology Dr. Suite 900 - Plano, Texas 75074

Your Complete Mapping Solution

Digital Orthophotography
Analytical Triangulation
Data Conversion
Topographic/Planimetric Mapping
DTM/DEM Collection
Highway & Design Scale Mapping
Airport Obstruction Analysis
Photo/LIDAR Acquisition
GIS/CAD Map Finishing
Photo Interpretation
Volumetric Calculations and Analysis
ArcInfo/ESRI Customization
Quality Control/Quality Assurance



Pinnacle Mapping Technologies, Inc.

8021 Knue Road, Suite 113 Indianapolis, IN 46250 317-585-2011 www.pinnaclemapping.com
e-mail: marketing@pinnaclemapping.com



FREEDOM PAPER

Wide-Format Specialists

PLOTTER PAPER



We've got you covered for GIS

- Coated Bond Paper
- Heavyweight Coated Paper
- Photographic Paper
- Self-Adhesive Media
- Durable / Outdoor Mapping Paper
- Ink Cartridges

DIETZGEN

Kodak



VIDAR

Canon

Use
Promo
Code
SCAUG06

10% OFF

Your First Plotter Paper Order

Order Online

www.freedompaper.com/scaug

Or Call 1-866-310-3335



Quick Delivery!

**Most Orders
Arrive in 1-2 Days**



GeoAnalytics®

s p a t i a l | i n f o r m a t i o n | s y s t e m s

Madison • Chicago • West Palm Beach • Austin

GEOANALYTICS.COM



Investigate Our GIS Degree

Tarrant County College
Southeast Campus

For more information:

www.tccd.edu

(817) 515-3613

Tarrant
County
College
Southeast Campus
in Arlington



An Equal Opportunity Institution/equal access to the disabled.

Hummingbird Enterprise™ for ESRI

Introduce Fast Processes to Make the Information
You Need Available Immediately

- > Provide users WEB ACCESS to GIS data along with associated documents
- > Allow municipal workers to quickly and easily access and manage geographical data records
- > Make spatial information available across the enterprise in both business and government

www.hummingbird.com



NAVTEO™



NTB Associates, Inc.
Engineers • Surveyors • Planners

GIS Services Include:

- Project Design and Management
- Database Development and Management
- Data Conversion and Creation
- Custom Software Development
- Data Analysis
- Hardware/Software Needs Assessment and Installation



9101 LBJ Freeway
Suite 420
Dallas, TX 75243
(214)954-4495
(214)954-4485 FAX
www.ntbainc.com

Offices in Dallas, TX • Shreveport, LA • Little Rock, AR • Fort Worth, TX



The University of Texas at Dallas

Excellence in GIS education and research for over a decade

www.gis.utdallas.edu

Graduate Certificate in Geographic Information Systems: a 15 credit hour graduate certificate focusing on GIS applications which can be completed in one year of part time evening study.

Graduate Certificate in Remote Sensing: a 15 credit hour graduate certificate focusing on remote sensing and digital image processing, which can be completed in one year of part time evening study.

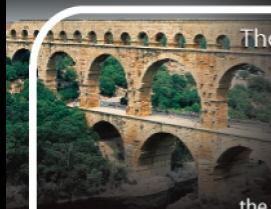
Master of Science in Geographic Information Sciences: a 30 or 36 credit hour graduate degree program incorporating the GIS Certificate.

Ph.D. in Geospatial Information Sciences: a 90 hour, research oriented degree program in geospatial sciences jointly offered jointly by the School of Social Sciences, the School of Natural Sciences and Mathematics, and the Eric Jonsson School of Engineering and Computer Science.



www.neigps.com

Sales • Service • Rentals • Repair • Training



Thousands Of Years Later,
The Roman Aqueducts Still
Serve Communities.

Our Goal Is The Same.

Partner with PBS&J...



At PBS&J, our prime objective is to engineer solutions that serve our clients and communities far into the future. That's why PBS&J created the Information Solutions Division ... to address the information management needs of our clients through the innovative use of technology. The Information Solutions Division provides GIS, database design and management, and website development services. PBS&J's GIS services focus on needs analysis, data analysis, and application development.

Offices throughout the USA

pbsj.com

972.818.7275

stewart[®]

geo technologies

The ESRI[®] ArcPad[™] Development Experts

No matter the size of your field application, the professionals at Tri-Global can customize the right solution for you. If you are just using ArcPad straight out of the box...you are missing out!

Contact a Tri-Global representative to get more from your ArcPad.

281.820.5830 Houston
806.757.2488 Lubbock
706.549.0869 Georgia
www.triglobal.net



Trimble Sales Rentals Service Training Programming

T E S S E L L A T I O N S

I N C O R P O R A T E D

www.tessellations.us
GIS Consulting and Training



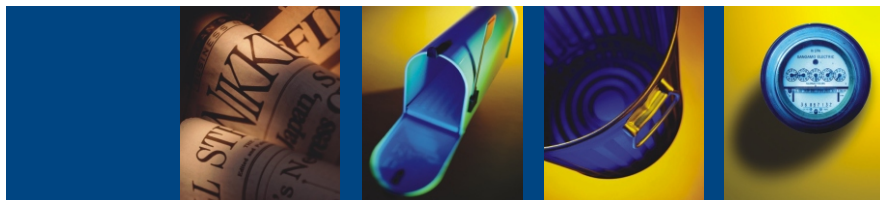
...bringing information, technology and people together

DENTON, TEXAS
ARIZONA

HOUSTON, TEXAS
OKLAHOMA

COLORADO

866.635.8514



From the Desktop to the Enterprise— LoGIStics Solutions That Pick-up and Deliver.

RouteSmart Technologies understands the middle name of logistics is GIS! Over the past two decades we've delivered scalable, sustainable GIS-based routing solutions that operate using the ESRI technology platform. RouteSmart software is specifically designed to meet the demanding route planning needs of the newspaper, postal/local delivery, utility meter reading and solid waste industries.

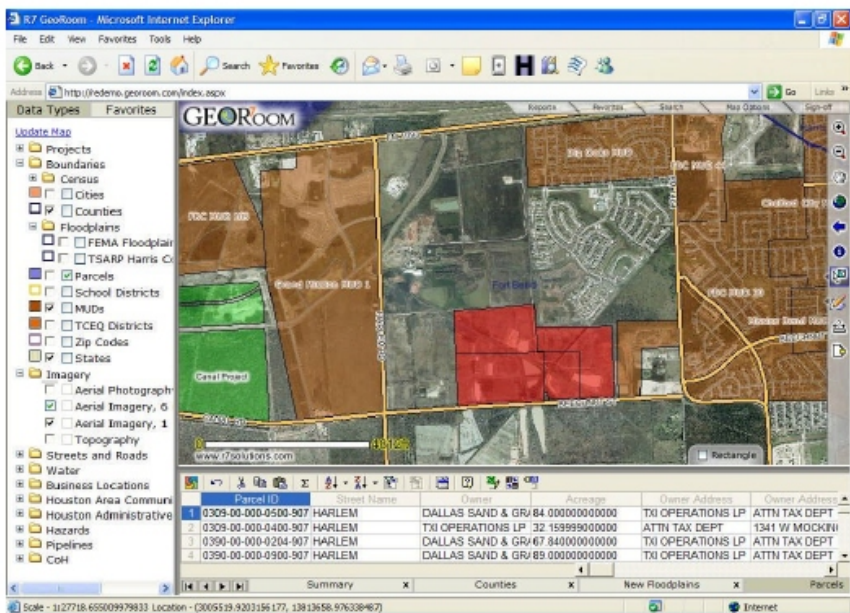
To learn more, route yourself to
www.routesmart.com
or call us today 1.800.977.7284.



The world's most intelligent routing system.

**You don't have to be a big city
to have city-wide
web-based GIS.**


You just have to have GeoRoom.



**GeoRoom
is managed GIS
for municipalities
and local government.**

R7 Solutions • www.R7Solutions.com • Phone 713.529.3300

**[R7]
solutions.**

A man with dark hair, wearing a light blue and white striped short-sleeved shirt, sits at a white table. On the table is a large, square wooden board. To the left of the board is a small, rectangular wooden block. In the center of the board is a circular hole with splintered wood around it, suggesting a failed attempt to force something through.

Tired of forcing your GIS data onto traditional storage?

Now there's a better tool.

Isilon IQ clustered storage was designed from the ground up for mission critical unstructured GIS data. Isilon's OneFS™ distributed file system accelerates your business with massive throughput, unsurpassed availability and performance that scales with your needs – a single file system can seamlessly grow from 4 to 250 Terabytes.

Visit Isilon Systems at the UpTime booth to put the power of clustered storage to work for you.



The Leader in Clustered Storage

1-877-2-ISILON | www.isilon.com
1-866-636-3033 | www.uptime.net



Your
 **Trimble**™ Survey Specialist



Western Data Systems™ specializes in sales throughout Texas, Oklahoma and Arkansas. Equipment rentals available nationwide and even globally. With a rental inventory of over 150 instruments, WDS™ offers the latest technology at competitive rates. In addition WDS™ has Trimble™ Certified Trainers providing the highest level of training and support.

You are never far away from the experts.

Dallas

1620 N. I-35E, Suite 310
Dallas, Texas 75006
877-902-8112

Houston

14722 Regnal Street
Houston, Texas 77039
888-700-5211

San Antonio

12000 Crownpoint, Ste. 150
San Antonio, Texas 78233
877-300-9659

Austin

7801 N. Lamar, Ste. C-71
Austin, Texas 78752
866-565-4937

www.westerndatasystems.com

ad designed by B'Jay Kendrick -bjayk@hotmail.com