

# What's New in ArcGIS Enterprise 11.2

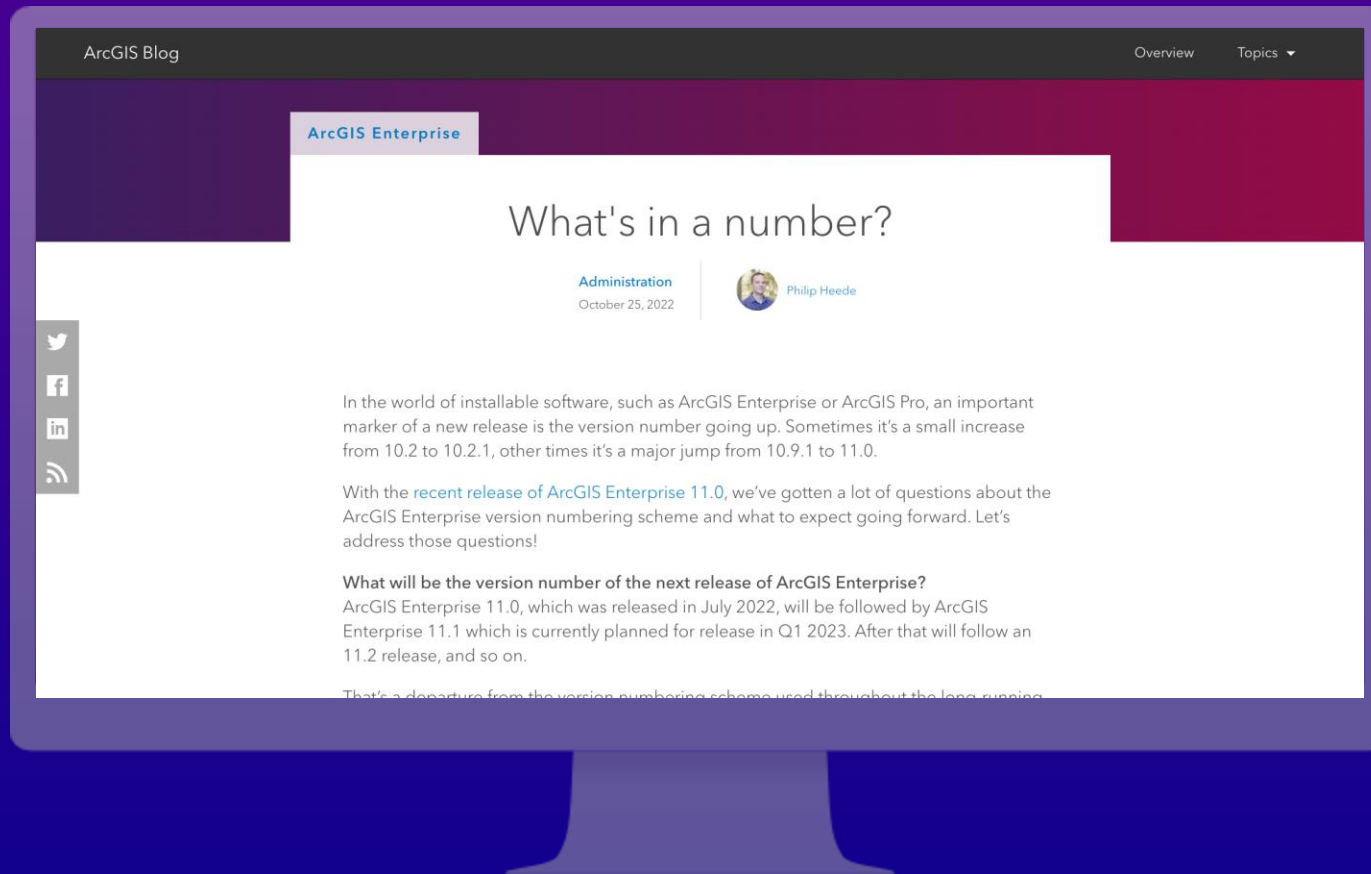
Greg Hakman

*ArcGIS Enterprise 11.2 Tech Transfer*

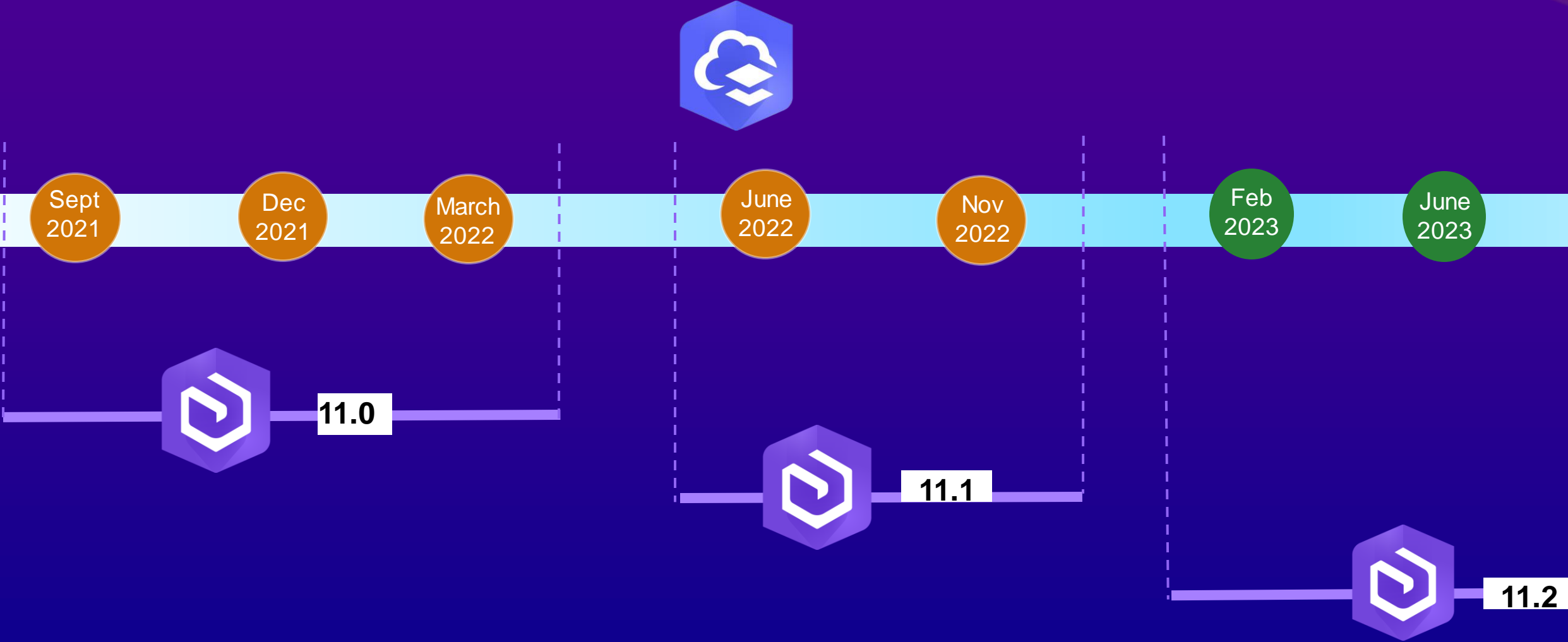


# Changes to Enterprise numbering

ArcGIS Blog: *What's in a number?*



# Alignment with ArcGIS Online Releases





# Significant Changes

ArcGIS Enterprise 11.x

# Big changes to ArcGIS Enterprise at 11.x

Removal of the ArcMap-based runtime

Transition to .NET 6 from .NET framework

Removal of classic Esri Story Maps

Removal of ArcGIS Dashboards Classic

Removal of Presentation for  
Map Viewer Classic

Removal of many  
Configurable Apps

# ArcMap-based runtime removal

ArcMap-based  
runtime was  
removed in  
ArcGIS Enterprise  
11.x

Only the  
ArcGIS Pro  
service runtime is  
included

It is no longer  
possible to publish  
services from  
ArcMap

Services using  
the ArcMap-  
based runtime  
will not run until  
migrated to the  
Pro runtime

# ArcMap-based runtime removal

ArcGIS Enterprise 11.x – Fresh install



Unable to publish services from ArcMap

Deprecated data sources will no longer work  
IBM Informix | IBM Db2 for z/OS | Raster catalogs | etc.

ArcObjects SOEs and SOIs will need to be  
migrated to the ArcGIS Enterprise SDK

# ArcMap-based runtime removal

ArcGIS Enterprise 11.x – Upgrade from 10.9.1 or earlier



Direct upgrades from ArcGIS Enterprise 10.7+ are supported

Always remember to back up ArcGIS Enterprise before upgrading

ArcGIS Enterprise will now remind you to back up

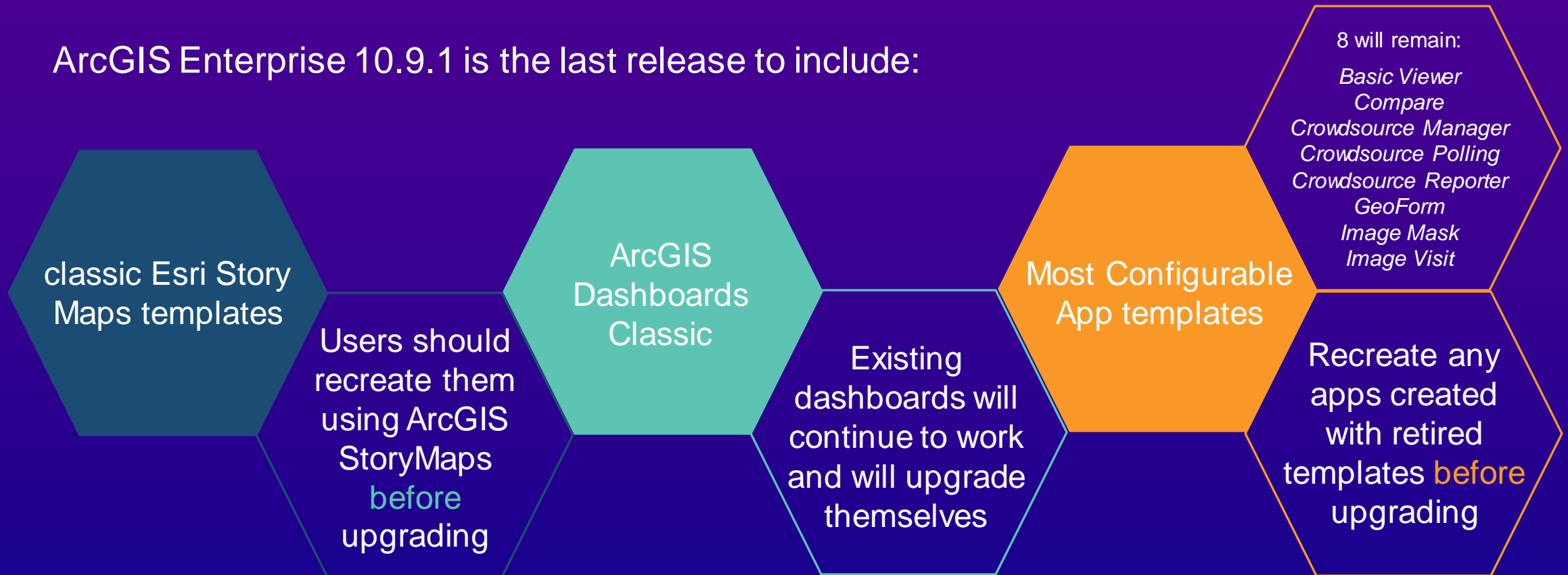
Compatible ArcMap-based services are automatically migrated to the ArcGIS Pro-based runtime during the upgrade

Non-compatible ArcMap-based services will be stopped, and unable to start, after an upgrade. These must be manually migrated.



# Noteworthy template & app retirements

ArcGIS Enterprise 10.9.1 is the last release to include:



# Noteworthy template & app retirements

## Key takeaways

ArcGIS Enterprise 10.9.1 includes the newer apps (ArcGIS StoryMaps, ArcGIS Dashboards, and ArcGIS Instant Apps) along with those retired at 11.x

Users should take advantage of them being side by side in the 10.9.1 release as they prepare to upgrade their deployments to 11.x

Dashboards will upgrade in place, but classic Story Maps and retired Configurable App templates will need to be recreated before upgrading

At 11.x, classic Story Maps and retired Configurable App templates will be inaccessible, and their respective items marked with a Retired badge

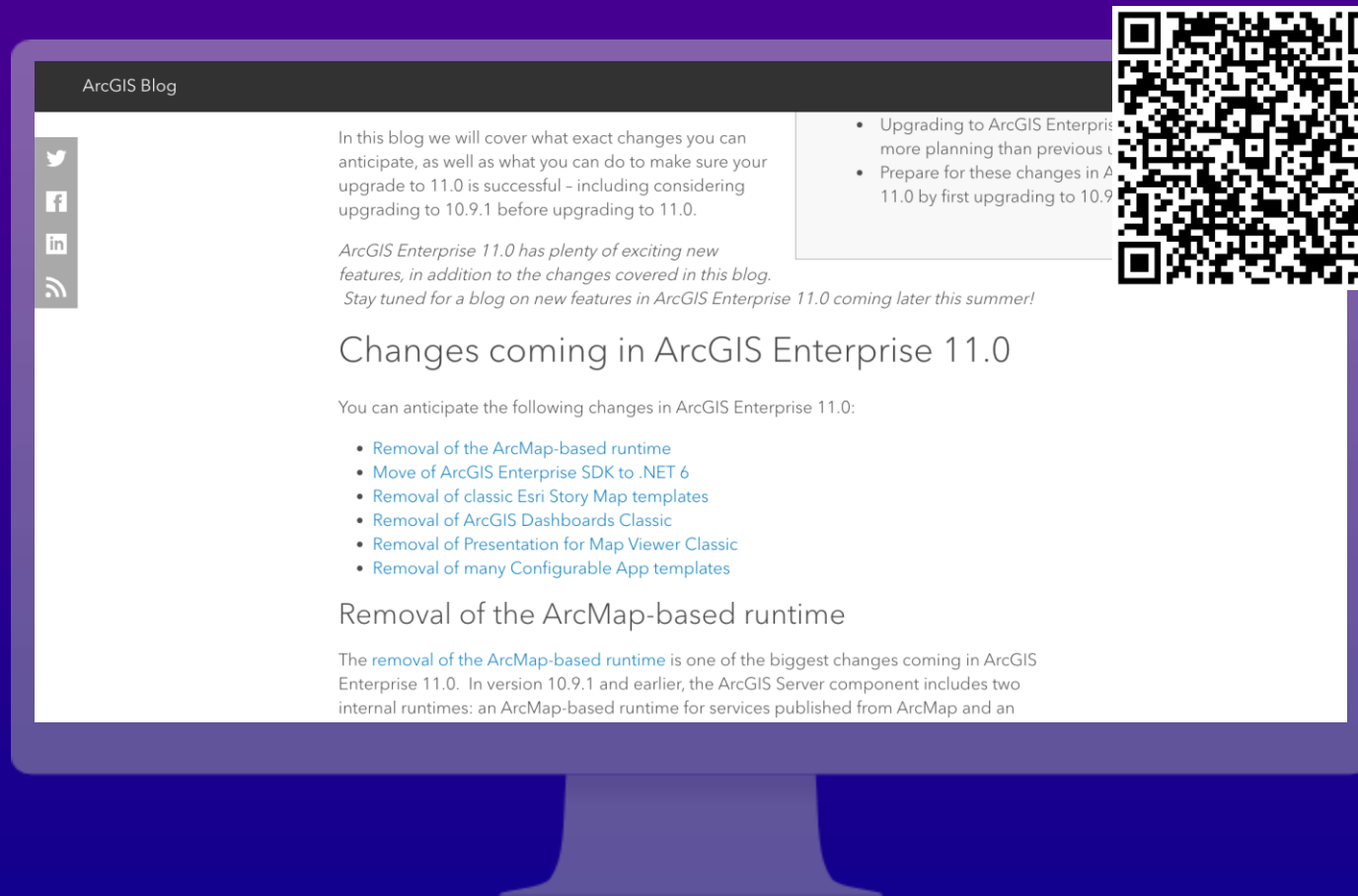


# Migration Resources

ArcGIS Enterprise 11.x

# Consider ArcGIS Enterprise 10.9.1 until you're ready to turn it up to 11

ArcGIS Blog | May 2022





# Migration resources

- ArcMap-based runtime removal

- ArcGIS Blog: Removal of ArcMap-based runtime from ArcGIS Enterprise – <https://www.esri.com/arcgis-blog/products/arcgis-enterprise/announcements/removal-of-arcmap-based-runtime-from-arcgis-enterprise/>
- ArcGIS Blog: Migrating services to the ArcGIS Pro-based runtime in ArcGIS Enterprise 10.9 – <https://www.esri.com/arcgis-blog/products/arcgis-enterprise/announcements/migrating-services-to-the-arcgis-pro-based-runtime-in-arcgis-enterprise-10-9/>
- ArcGIS Blog: Migrating ArcObjects SOEs and SOIs to ArcGIS Enterprise SDK – <https://www.esri.com/arcgis-blog/products/arcgis-enterprise/announcements/migrating-arcobjects-soes-and-sois-to-arcgis-enterprise-sdk/>
- Technical Paper: Manually migrating services from the ArcMap-based to the ArcGIS Pro-based runtime – <https://www.esri.com/content/dam/esrisites/en-us/media/technical-papers/migrating-pro-based-runtime.pdf>

- Transition to .NET 6

- Technical Support Article - Deprecation: ArcGIS Enterprise SDK support for .NET Framework – <https://support.esri.com/en/technical-article/000026633>
- ArcGIS Developers Help: Overview of .NET 6 support – <https://developers.arcgis.com/enterprise-sdk/guide/net/net-6-support/>

# Migration resources

- **Removal of classic Story Maps**
  - ArcGIS StoryMap: Moving to ArcGIS StoryMaps – <https://storymaps.arcgis.com/stories/472a6ddd582b40b58a5a6af2c30a4573>
  - ArcGIS Blog: Recreating a classic story with ArcGIS StoryMaps – <https://www.esri.com/arcgis-blog/products/story-maps/mapping/recreating-classic-story-maps-in-arcgis-storymaps/>
- **Removal of ArcGIS Dashboards Classic**
  - ArcGIS Dashboards Classic is Retiring – <https://www.esri.com/arcgis-blog/products/ops-dashboard/announcements/dashboards-classic-retiring/>
  - Technical Support Article - Deprecation: ArcGIS Dashboards Classic (ArcGIS Online March 2022 and ArcGIS Enterprise 11.0) – <https://support.esri.com/en/Technical-Article/000027289>
- **Removal of many ArcGIS Configurable App templates**
  - Technical Support Article - Deprecation: Mature and retired configurable apps in ArcGIS Enterprise – <https://support.esri.com/en/Technical-Article/00002779>
  - Technical Support Article - How To: Identify deprecated Configurable Apps using a Python Script – <https://support.esri.com/en/Technical-Article/000027957>
- **Removal of Presentation for Map Viewer Classic**
  - Technical Support Article - Deprecation: Presentation for Map Viewer Classic – <https://support.esri.com/en/Technical-Article/000027297>
  - ArcGIS Instant Apps Help: Exhibit – <https://doc.arcgis.com/en/instant-apps/11.0/create-apps/exhibit.htm>

# What's New

ArcGIS Enterprise 11.2

# Key enhancements at 11.2

ArcGIS Instant Apps  
Compass tool

ArcGIS  
StoryMaps  
briefings (beta)

ArcGIS Experience Builder  
accessibility updates

Mobile views  
for ArcGIS  
Enterprise  
sites

ArcGIS  
Dashboards  
Compass tool

ArcGIS Dashboard  
boards find my  
location tool

ArcGIS Dashboards  
accessibility  
updates

Updated  
Instant App  
templates

Mobile views for  
ArcGIS Dashboards

New ArcGIS Experience Builder  
templates

Configurable app  
descriptions for  
ArcGIS Instant  
apps

Precise access for  
editing ArcGIS  
Enterprise sites pages

Support for German Austria  
date/format in ArcGIS  
Experience Builder



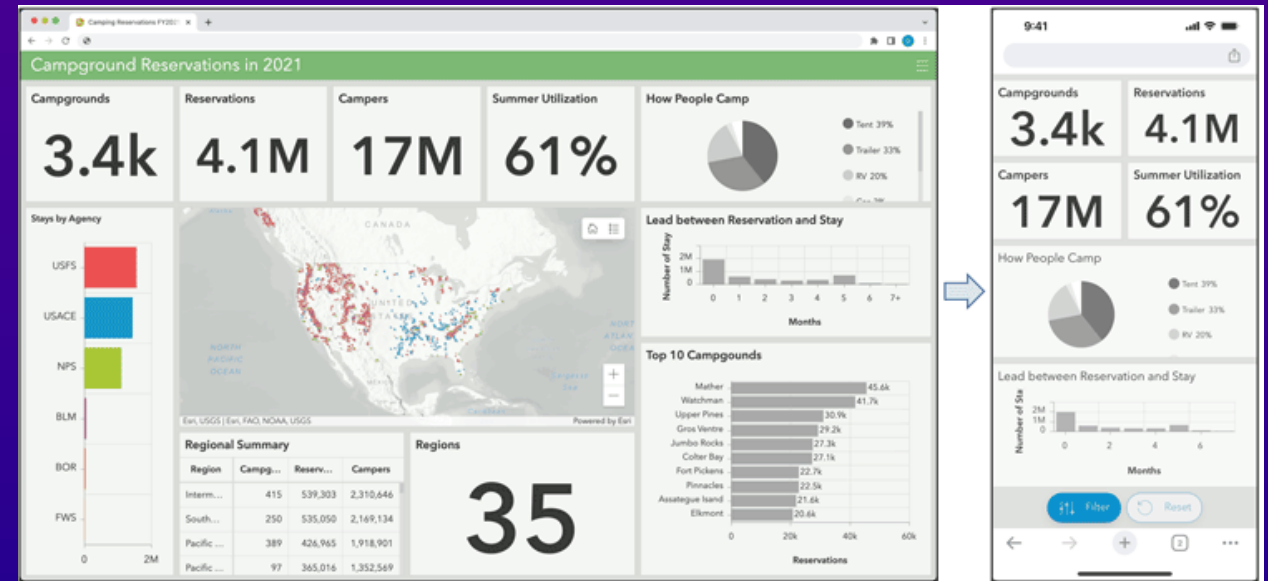
# ArcGIS Dashboards updates

The background of the slide features a dark blue gradient. On the right side, there are several glowing, curved lines in shades of orange, yellow, and purple, creating a sense of motion and modern technology. In the lower-left quadrant, a faint, semi-transparent map of the United States is visible, with the state of California highlighted in a slightly lighter shade of blue.



# ArcGIS Dashboards updates

- **Dashboard views** - You can now configure a single dashboard to have both a desktop and mobile view.
  - Each view is optimized for viewing on either a desktop or mobile devices.
  - Your mobile view of your dashboard can include the same elements as your desktop view, or new elements with different configurations.

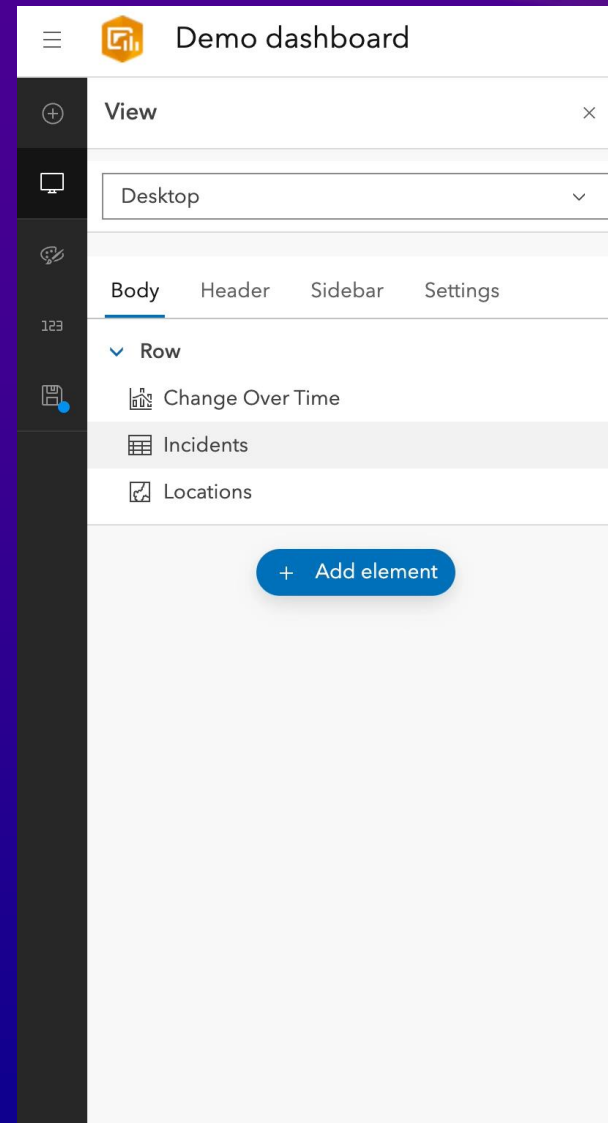


Dashboard in desktop and mobile views.



# ArcGIS Dashboards updates

- **Dashboard views** - You can now configure a single dashboard to have both a desktop and mobile view.
  - Each view is optimized for viewing on either a desktop or mobile devices.
  - Your mobile view of your dashboard can include the same elements as your desktop view, or new elements with different configurations.

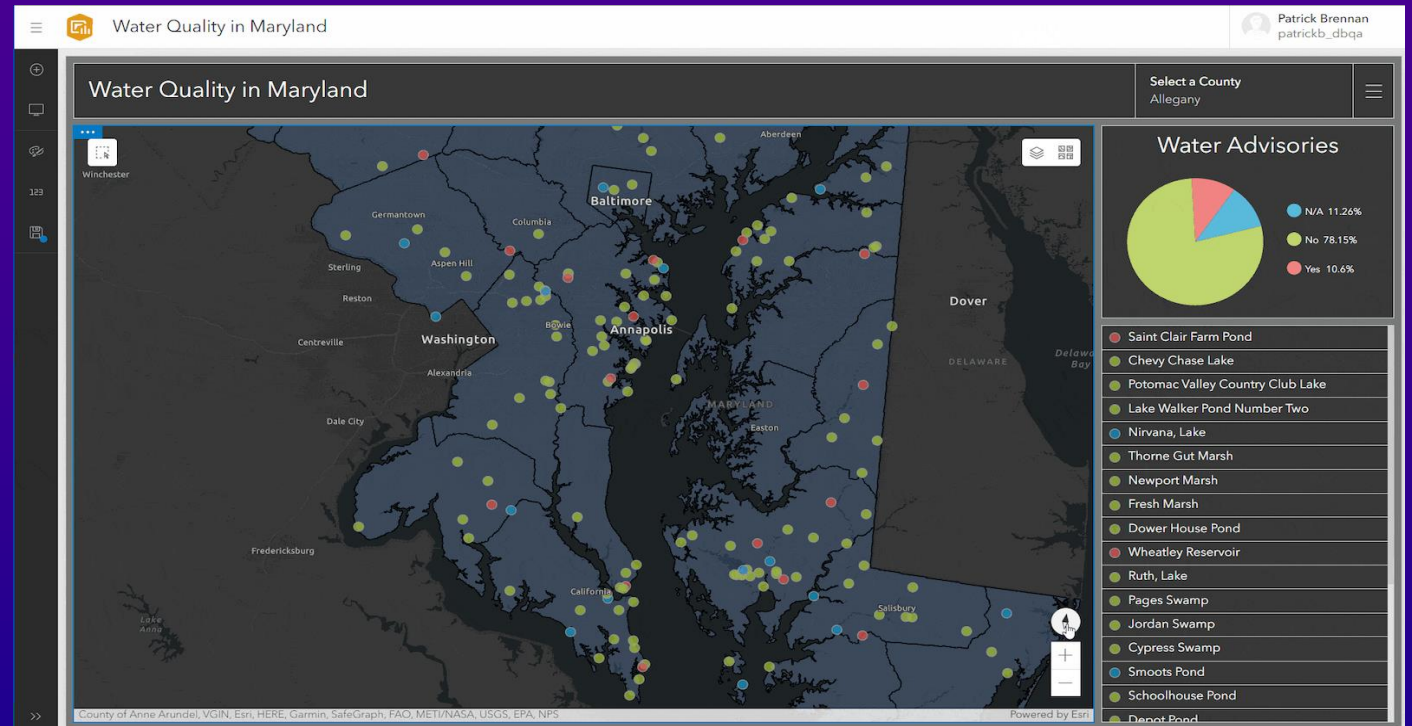






# ArcGIS Dashboards updates

- **Map element updates** - Two new map options have been added for the map element:
  - **Find my location** option zooms and centers the map to the approximate location of the user's device.
  - **Compass** option shows the maps rotational angle and allows users to reorient the map to point north.



Dashboard with compass option.

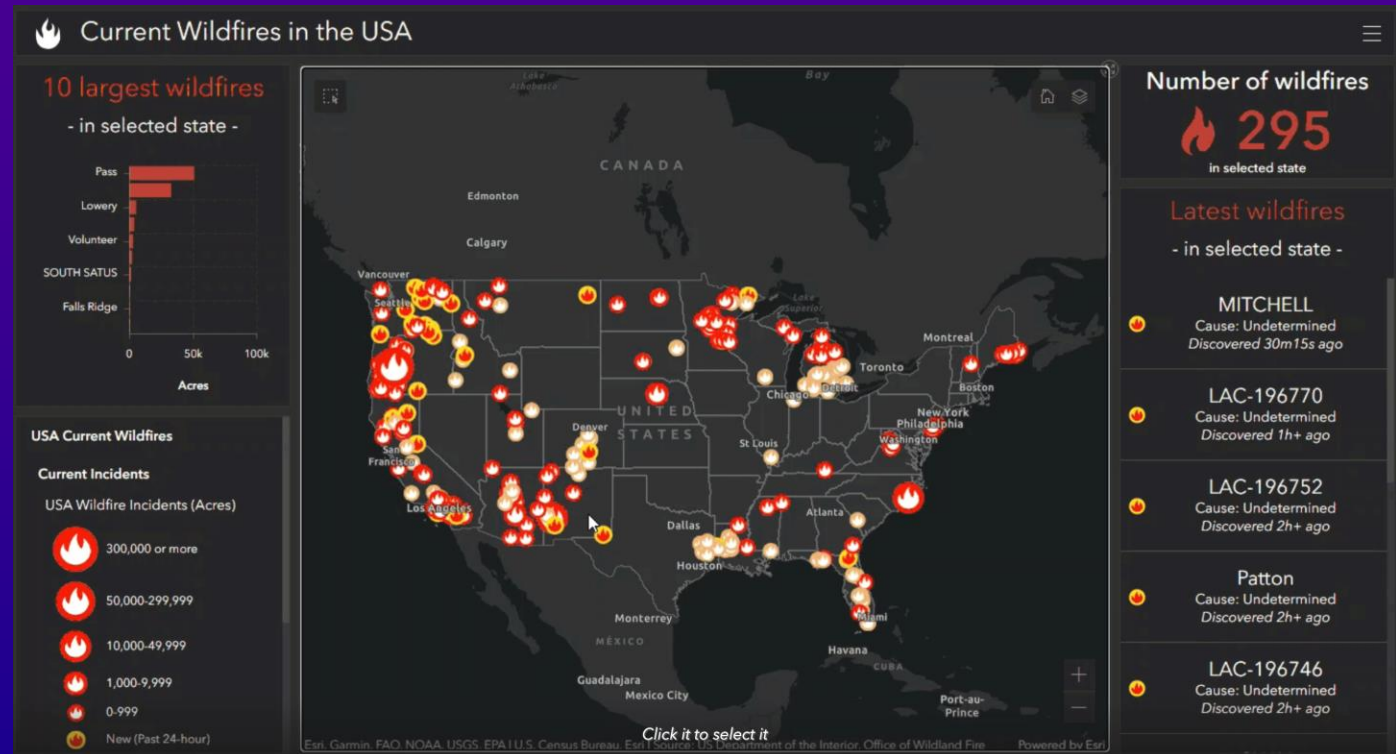
- **Data download** - Dashboard users are no longer required to sign in to download source data from an element.





# ArcGIS Dashboards updates

- **Map selection** – You can now configure layer actions to allow users to select features without the need for selection tools.

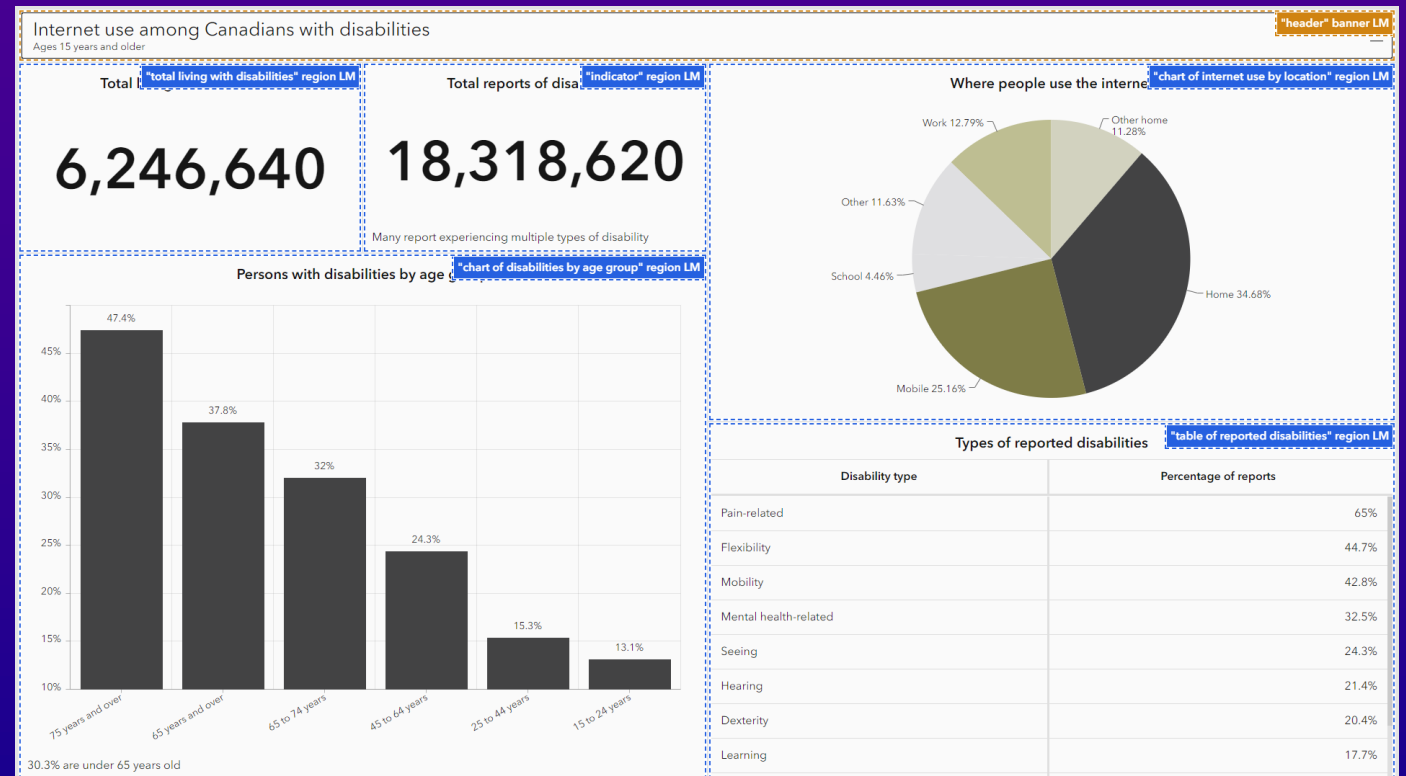


Wildfire Dashboard with showing wildfires in the selected state.



# ArcGIS Dashboards updates

- **Accessibility** - Dashboard accessibility has been improved, including better and more consistent keyboard navigation, focus management, and improvements to screen reader support.



Dashboard with accessible names configured.

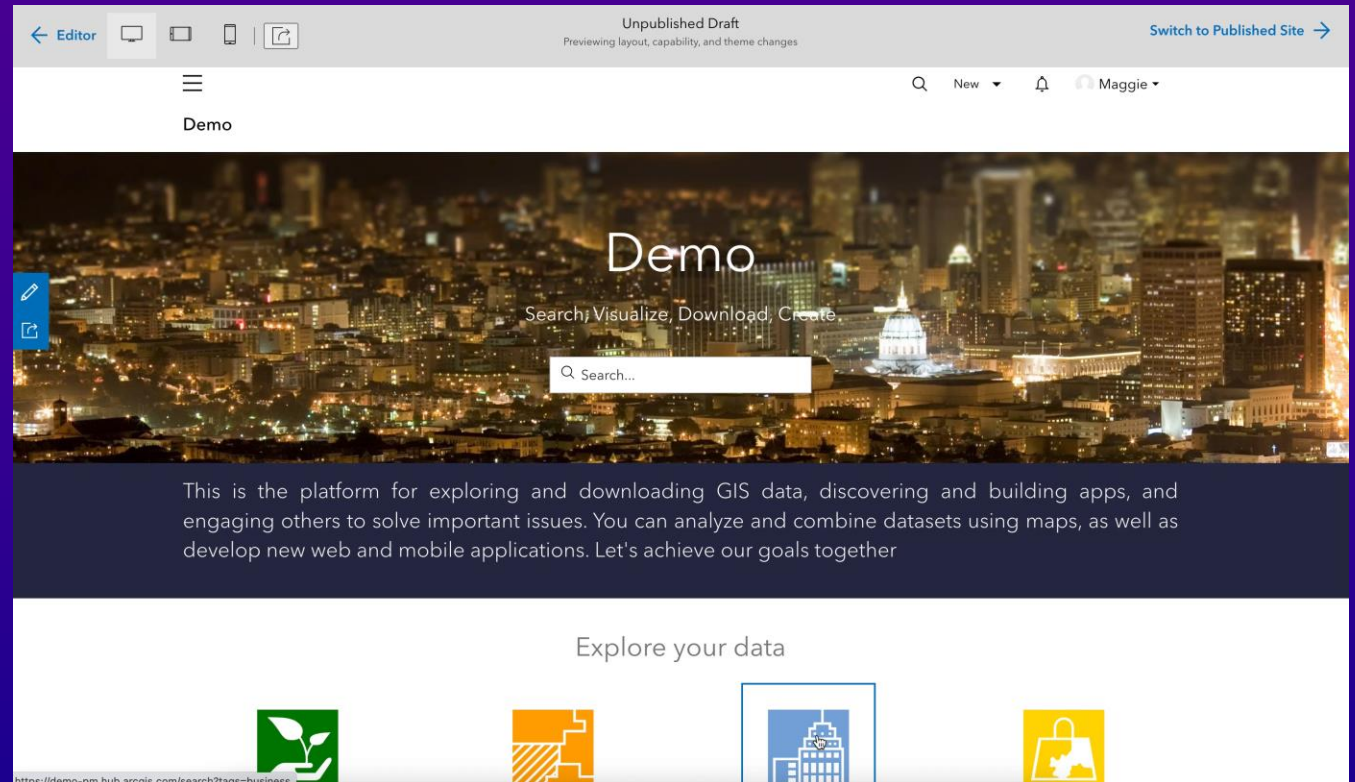
# ArcGIS Enterprise Sites

The background of the slide is a dark blue gradient. On the right side, there are several glowing, curved lines in shades of orange, yellow, and purple, resembling light trails or data paths. The bottom right corner features a faint, semi-transparent map of the United States, showing state boundaries and some geographical features like the Great Lakes and the Gulf of Mexico.



# ArcGIS Enterprise Sites updates

- **Precisely granted access for editing:** Site managers can now grant a user access to **edit individual pages** without giving them access to edit everything on the site.
- **Preview for different views:** Site editors can preview how site and page drafts will display on **desktop, mobile, and tablet devices**.



Preview site and page drafts for desktop, mobile, and tablet views.



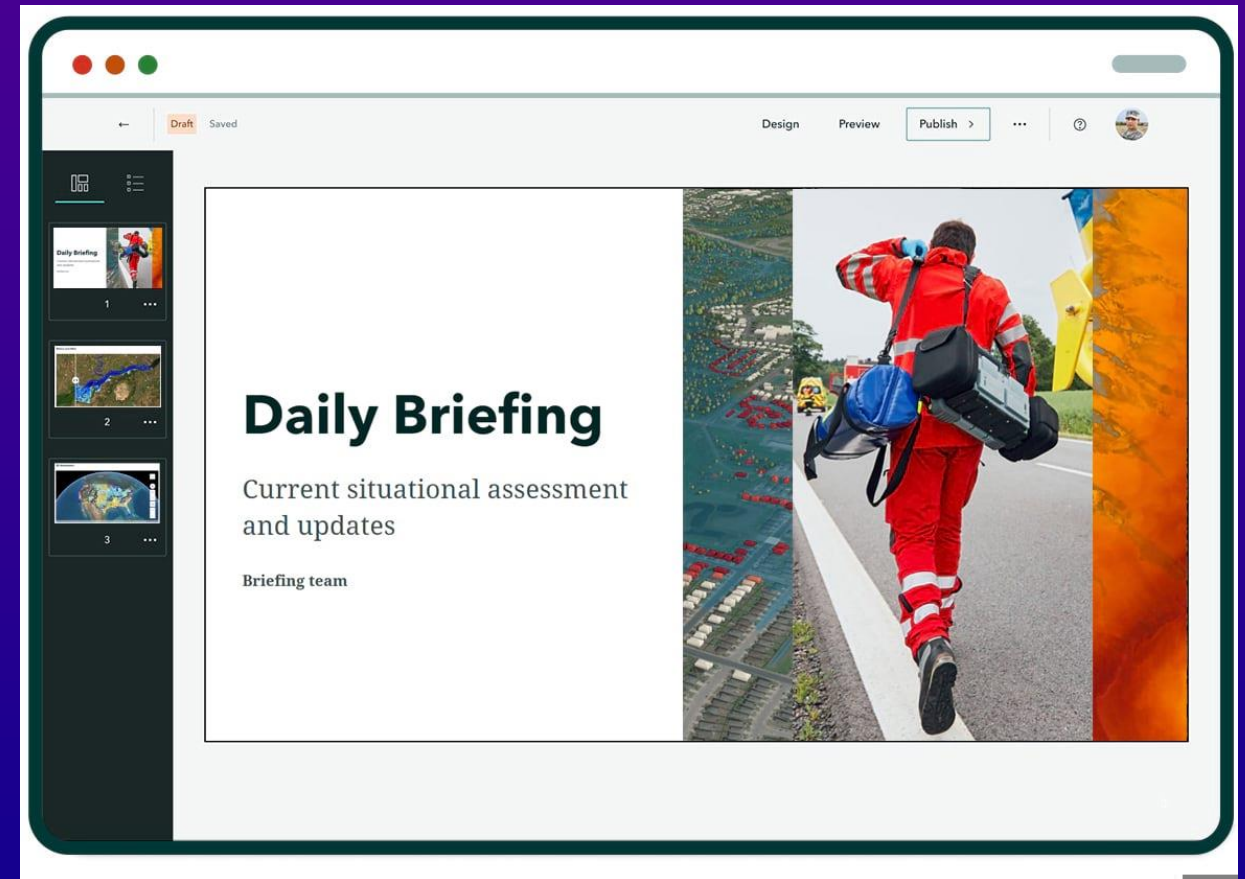
The background of the slide features a dark blue gradient with abstract, glowing orange and yellow light trails that curve across the right side. A faint, semi-transparent map of the United States is visible in the lower-left quadrant, showing state boundaries and some topographical features.

# ArcGIS StoryMaps updates



# ArcGIS StoryMaps Updates

- **ArcGIS StoryMaps briefings** are available as a beta feature in ArcGIS Enterprise 11.2.
  - Briefings offer a slide-based output with securely integrated live maps and data from your organization.
  - Users will need to enable beta features within their ArcGIS StoryMaps [organization settings](#).
  - Feedback and support will be managed through the [ArcGIS StoryMaps Esri Community](#) or the in-app feedback form.





The slide features a dark blue background with a faint, stylized map of the United States. On the right side, there are several glowing, curved lines in shades of orange, yellow, and purple, creating a sense of motion and technology. The text is positioned on the left side of the slide.

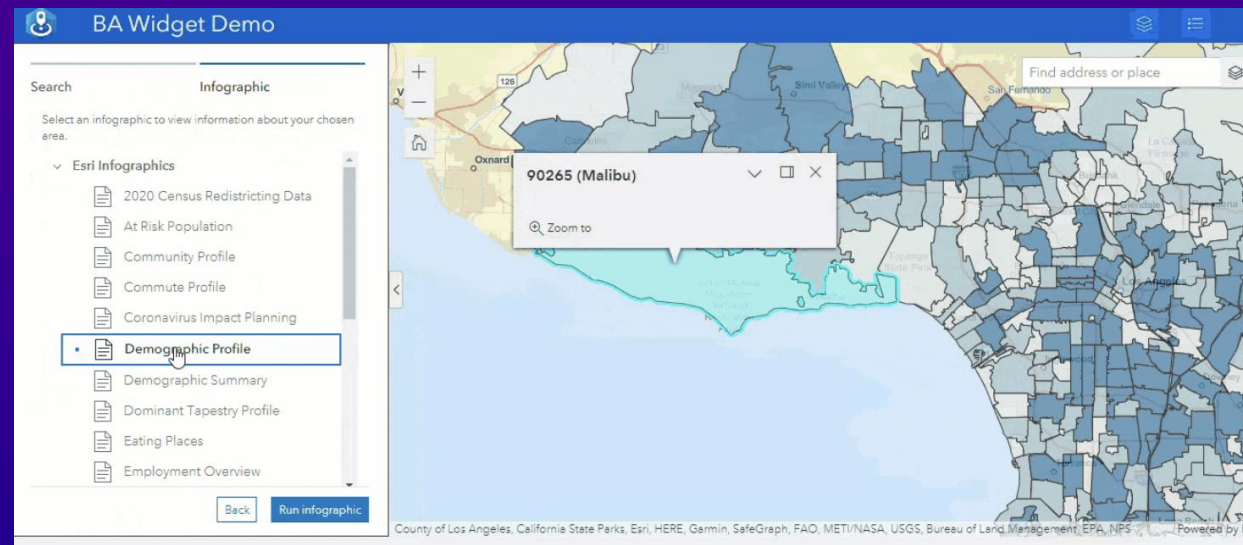
# ArcGIS Experience Builder updates



# ArcGIS Experience Builder updates

- **New widgets:**

- **Add Data** widget: Allow users to temporarily add data sources to an app at run time. Data can be added via ArcGIS content, URL, or local storage.
- **Basemap Gallery** widget: Connects to a Map widget and adds a panel for changing the map's basemap.
- **Business Analyst** widget: Allow users to visualize key indicators and information about specific locations using interactive infographics made with ArcGIS Business Analyst.
- **Swipe** widget: Allows you to compare different layers and maps by swiping a divider across the map.



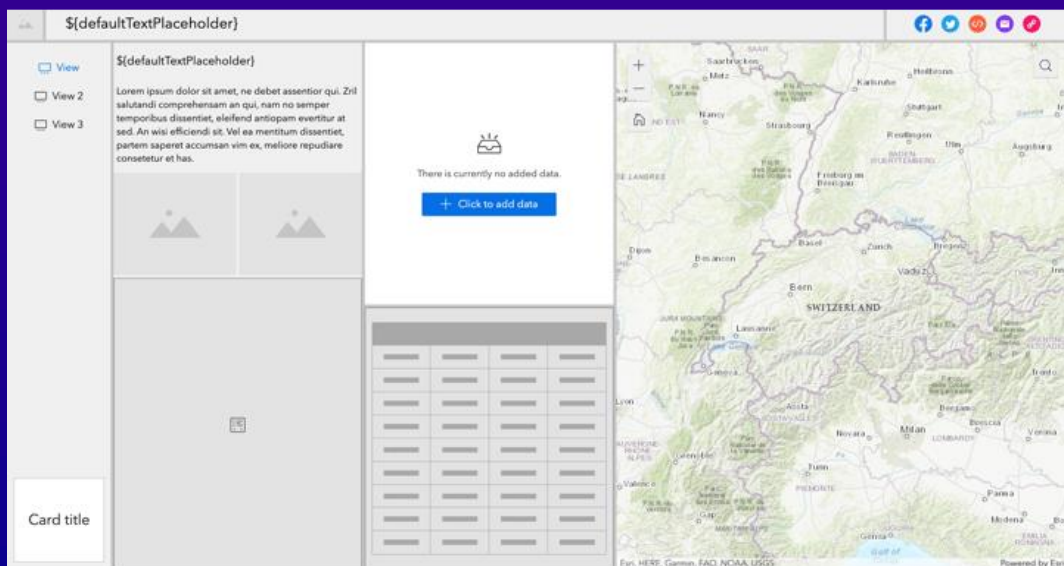
ArcGIS Experience Builder app using the Business Analyst widget.



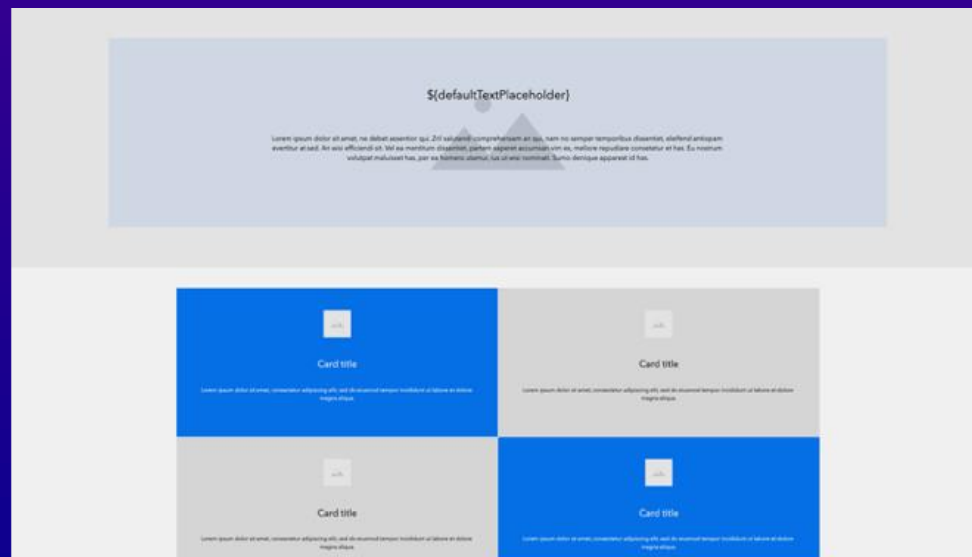


# ArcGIS Experience Builder updates

- **New Templates:**
  - Blank window template
  - Elevate multi-page template
  - Two new full-screen page templates: **Multiverse** and **Frame**.



Multiverse



Frame

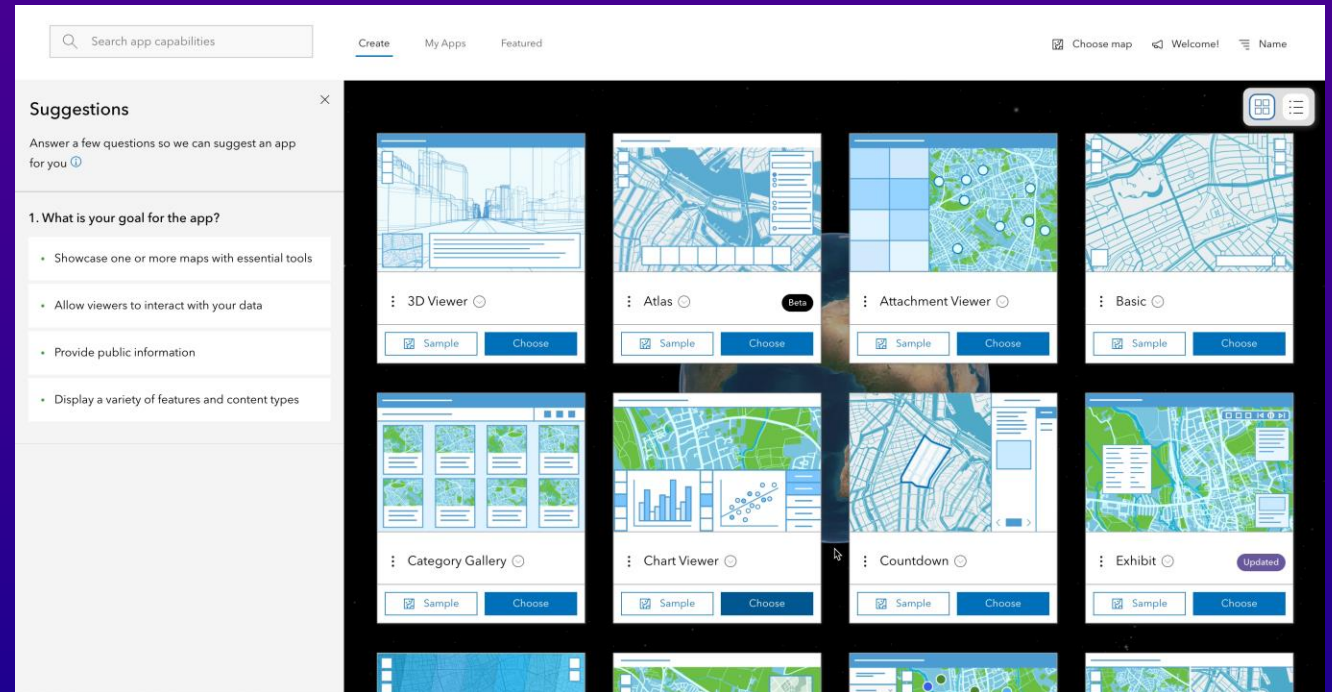
# ArcGIS Instant Apps

The background of the slide features a dark blue gradient. On the right side, there are several glowing, curved lines in shades of orange, yellow, and purple, creating a sense of motion and technology. In the lower-left and center areas, there is a faint, semi-transparent map showing a topographic view of a mountainous region and a street grid in the bottom right corner.



# ArcGIS Instant App updates: Home

- The Create tab includes a new **Details** view so you can read the app description and example use cases while browsing the app templates.
- The **My Apps** tab now allows you to sort by owner, which is helpful when you filter by My Organization's apps.



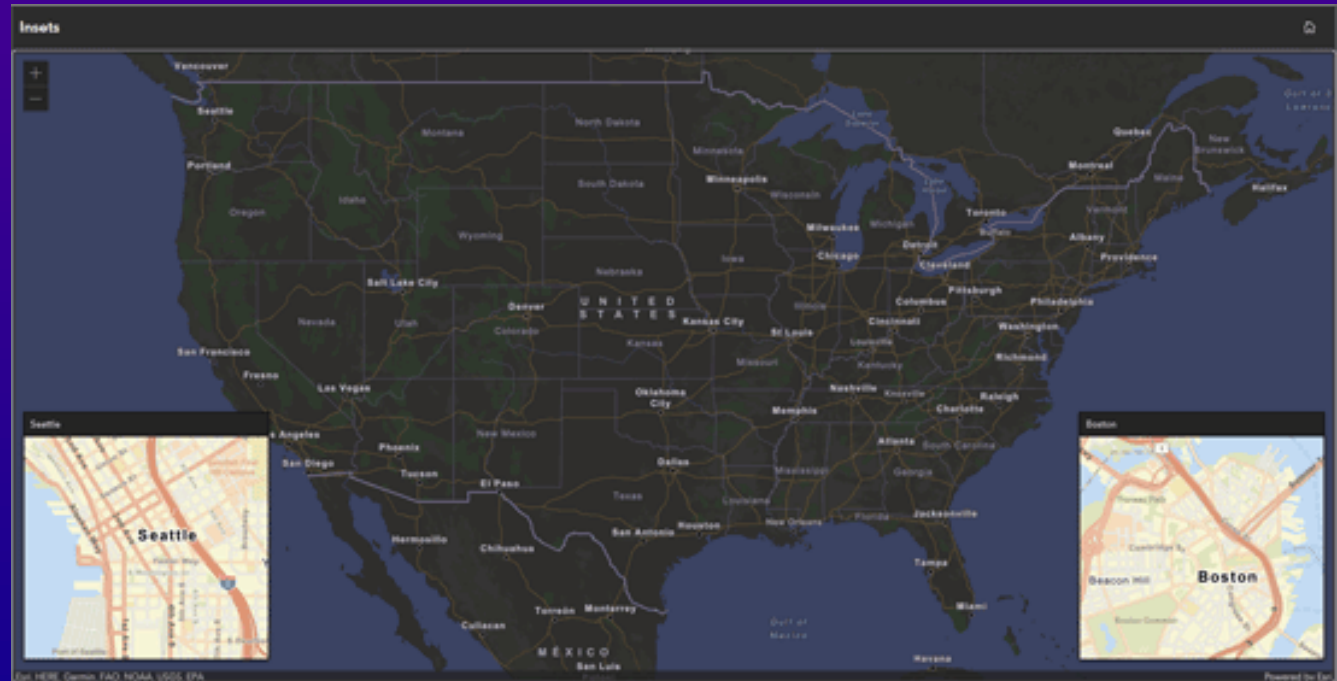
The Details view makes it easier to find the right app for your project.





# ArcGIS Instant App updates: New Templates

- **Insets** – Display noncontiguous geographic locations within a single app layout so users can view and interact with data from a layer in multiple locations at once.

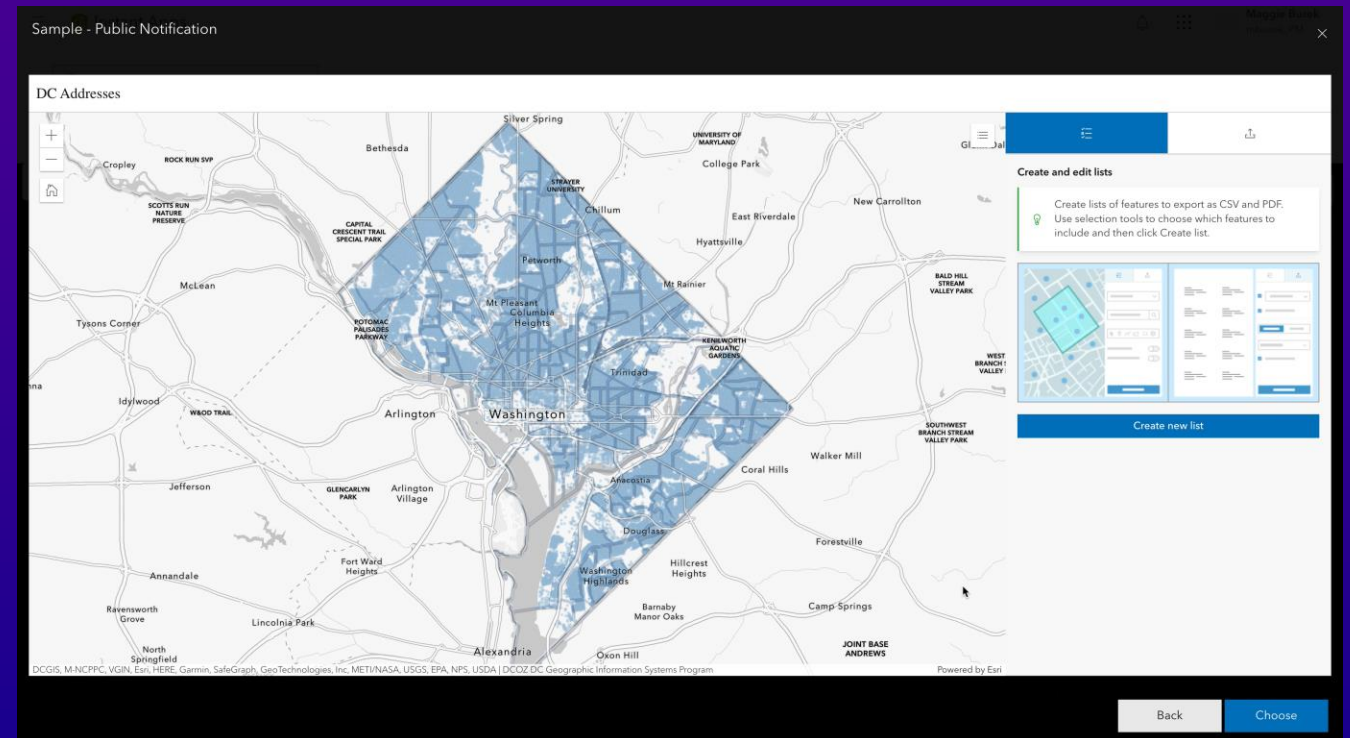






# ArcGIS Instant App updates: New Templates

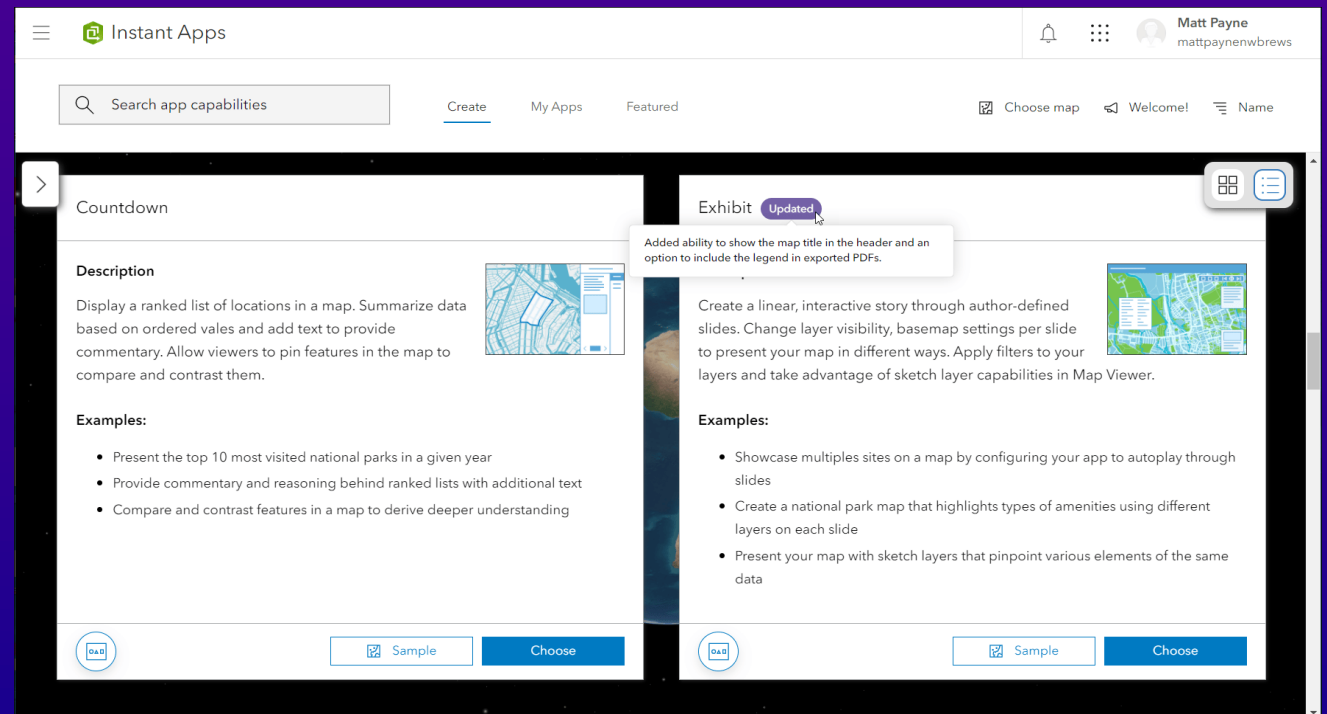
- **Public Notifications** – A new template that helps agencies streamline the process of generating public notices.






# ArcGIS Instant App updates: templates and configuration

- Updates have been made to the following templates:
  - 3D Viewer
  - Exhibit
  - Imagery Viewer
  - Interactive Legend
  - Nearby
  - Sidebar
  - Slider
  - Zone Lookup
- All apps now include the **Compass tool**.
- The design of the **Map and Scene** settings panels has been improved.
- The Export to PDF setting was renamed to **Export** in several app templates and includes additional enhancements.



Look for the updated tag and hover to see what's new.

Where to find more  
details

The background features a dark purple gradient. On the right side, there are several glowing, curved light trails in shades of blue, purple, and orange. A faint, light-colored map of the United States is visible in the lower-left and central areas, overlaid on the purple background.



# Additional resources

- [What's Coming in ArcGIS Enterprise 11.2 \(doc\)](#)
- [What's Coming in ArcGIS Enterprise 11.2 \(PPT\)](#)
- [What's New](#) documentation pages for all apps
- [What's New in ArcGIS Online \(February 2023\)](#)
- [What's New in ArcGIS Online \(June 2023\)](#)





**esri**<sup>®</sup>

THE  
SCIENCE  
OF  
WHERE<sup>®</sup>