



SEX OFFENDER

For Police

Issue: Residential locations for registered sex offender's(RSO) are limited by ordinance. Police Detectives need to identify if locations of potential new RSO are within an allowable area.

Resolution:

1. Model: Buffers specific existing GIS layers based on distances outlined in ordinance to create buffer of unsuitable area for RSO residence.
2. App: Combines Buffer, address information with related GIS layers for easy access by Detectives to identify if potential new RSO residence is in permitted area.

GIS USES AND ASSISTANCE FOR EMERGENCY SERVICES

Many applications assist staff in our Police and Fire Departments with their everyday work as well as emergency situations. Below are some examples. Not all are huge apps but the combination helps ease the load for our Police and Fire personnel and assists the Town's role.

COMPUTER AIDED DISPATCH (CAD)

For Fire and Police

Issue: Date required for consumption into CAD system

Resolution:

1. Model: Data extracted and converted into applicable format for consumption by 3rd party CAD
2. Map book pages: Creation of static view of data, Attached in CAD with live map.

MAP BOOK PAGE

For Fire and Police

Issue: Map book pages must be reviewed and kept updated as per development. They are attached to PD CAD system as well as in vehicles to provide a static offline access to data. A single

Resolution:

1. Dashboard: Contains links to server stored most currently approved page. Provides data update status. The entire Town is updated every 3 years and this provides a visual on when map pages were last updated as well as what has been updated by GIS and is pending approval from Fire Department.
- Explanation: Provides single storage location for pages and easy overview and access for personnel.



CITIZEN POLICE ACADEMY APPLICATION

For Police

Issue: PD was collecting applications for the Citizen Police Academy on paper which had to manually be entered into a spreadsheet. Then applicants had to be vetted.

Resolution:

1. Survey123 form: collected applicant details so that all information was collected and stored in one place.
 2. No map requirement for this project but it is available if the PD later wants to analyze where the applicants are coming from in Town.
- Future developments: will include creating an app for PD to monitor and approve the vetting process for each applicant.

SANTA COPS

For Police

Issue: PD coordinate charitable donations with recommended Town recipients

Resolution:

- o Survey123 form: Collects details for recommended Town citizens.
 - o App: Displays distribution on recipient residences to assist PD with distribution of presents.
- Resolution: form collects details from person recommending donations and potential recipient. PD is able to vet details and select recipients to receive donations.

NATIONAL NIGHT OUT (NNO)

For Police

Issue: PD coordinates NNO parties throughout the Town. Manages Party location applications, whether they are to be judged parties, part of a HOA or not, required barricades delivered from Public Works and on the night visits from Police vehicle and/or bicycle patrols, PD Volunteer, Fire Vehicles, Elected Public Officials and judging parties.

- o Survey123 form: Collects required details from participating citizens
 - o Dashboard: Combines details from Survey123 form for distribution to employees and elected officials on the night and before. Including map to assist in deployment personnel to each party.
- * During Covid the form was adjusted to provide a virtual party experience for residents but still allow the PD to track who and where was participating without requiring any physical interactions.

BUSINESS CONTACTS

For Police

Issue: PD wanted to collect after hour contact details for businesses so they could easily identify and contact the correct person.

Resolution:

1. Survey123 form: collected business contact details so that all information was collected and stored in one place.
2. Dashboard: Includes map and basic spatial analysis for officers to identify business. Tabular data is available and stored in a single location for easy access.

LIVESTOCK OWNERS

For Police/Animal Services

Issue: When livestock are loose Animal Services Officers (ASO) need to locate livestock owners and get them restrain them as quickly as possible to minimize potential damage to the animal, people and property. Previously owner information was kept on outdated pieces of paper in the ASO vehicles.

Resolution:

- o Survey123 form: Collects owner contact and animal details from animal/property owner
 - o Dashboard: Combines details from Survey123 form into dashboard with map.
- Explanation: Dashboard allows for basic spatial queries based on location and animal loose to identify potential owners. Contact details are available and can be utilized easily allowing for quicker resolution of the situation.

MAPS

For Fire and Police

- Incident/Location Specific Maps

ANALYSIS

For Fire and Police

- Hot Spot
- Drive Time
- Drive Time/Event analysis to dis/prove incident involvement

Note directions camera captures in fields below

VIDEO STORAGE

enter hours, days or weeks

COLOR

yes or no

FRONT

yes if recorded by camera

BACK

yes if recorded by camera

DRIVE

yes if recorded by camera

ALLEY

yes if recorded by camera

FRONT DOOR

yes if recorded by camera

Note directions camera captures in fields below

VIDEO STORAGE

enter hours, days or weeks

COLOR

yes or no

FRONT

yes if recorded by camera

BACK

yes if recorded by camera

DRIVE

yes if recorded by camera

ALLEY

yes if recorded by camera

FRONT DOOR

yes if recorded by camera

Active Shooter at Moviehouse Eatery

HIGHLIGHTS:

- At 11 pm a Flower Mound PD officer visiting off duty security reported above event.
- At 11:00, officer reported shooter down outside theater. 3-15 people have been transported to area hospitals and their conditions are unknown at this time.
- A Family Assistance Center is being set up at the TMC Community Activity Center, 1300 Gerhart Road.
- A press conference will be held at 8 am at Flower Mound Town Hall, 2125 Cross Timbers Road.

RESOURCES:

Flower Mound Web Pages

- Town <https://www.flowermound.com/flowermound>
- Fire Department <https://www.flowermound.com/1338/Fire-Department>
- Flower Mound Police Department <https://www.flowermound.com/1336/Police-Department>

Flower Mound Social Media Pages - Facebook

- Town <https://www.facebook.com/FlowerMound/>
- Fire Department <https://www.facebook.com/FlowerMoundFireDepartment/>
- Police Department <https://www.facebook.com/FlowerMoundPoliceDepartment/>

Flower Mound Social Media Pages - Twitter

- Town https://twitter.com/flower_mound
- Fire Department <https://twitter.com/FlowerMoundFD>
- Police Department <https://twitter.com/FlowerMoundPD>

External Web Pages

- Denton County <https://dentoncounty.gov/>

CITIZEN CAMERA PROGRAM

For Police

Issue: PD was aware of increasing number of residential/business cameras and recognized their potential for use in crime fighting.

Resolution:

1. Geoform: collects details about cameras on premise and owner contact details. *does not provide access to footage.
2. Dashboard: Combines details from Geoform, map and basic spatial analysis capabilities.

Resolution: In response to an incident officers can check if there are nearby cameras which may have caught relevant footage. The contact details along with camera detail are readily available and the officer is able to contact the owner and request footage. This saves officers considerable time finding cameras and owner details and potentially reduces time in resolving the issue.

*Note: this application won a URISA ESIG Distinguished Single System Award (2020)

EMERGENCY EVENT DRIVEN STORY MAP

For Fire and Police

Issue: In the case of a major emergency event we would need to get information out to the public in a uniformed way.

Resolution:

- o Storymap: Template created so that it has all the links we would need to publish (County, State etc) but able to edit for individual events. Includes situational map.
- Explanation: This single site for publication means that updates can be made easily to keep the public informed and without a lot of work from employees.

DAMAGE ASSESSMENT

For Fire

Issue: In the case of a major emergency our Emergency Services (ES) need to conduct a Damage Assessment.

1. Survey123 form: collected damage details with a preset app. Details collected based on FEMA standards to facilitate interactions with FEMA. Very simple form for ease of use by volunteers.
 2. Dashboard: Includes map and provides an overview of situation as damage data is collected.
- Resolution: Updates and edits each time this is used, based on ES feedback.

EMERGENCY EXERCISES

For Fire and Police

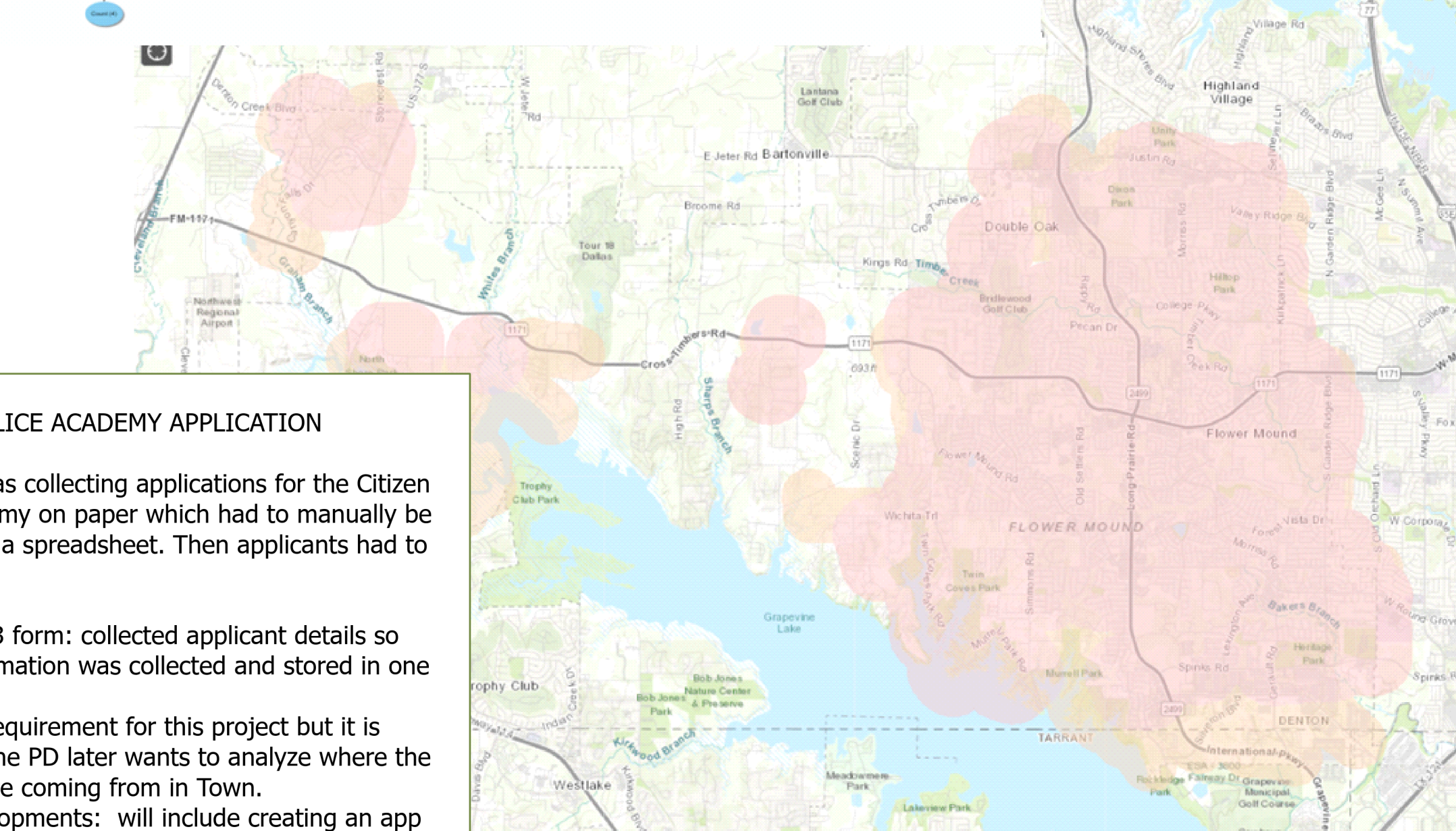
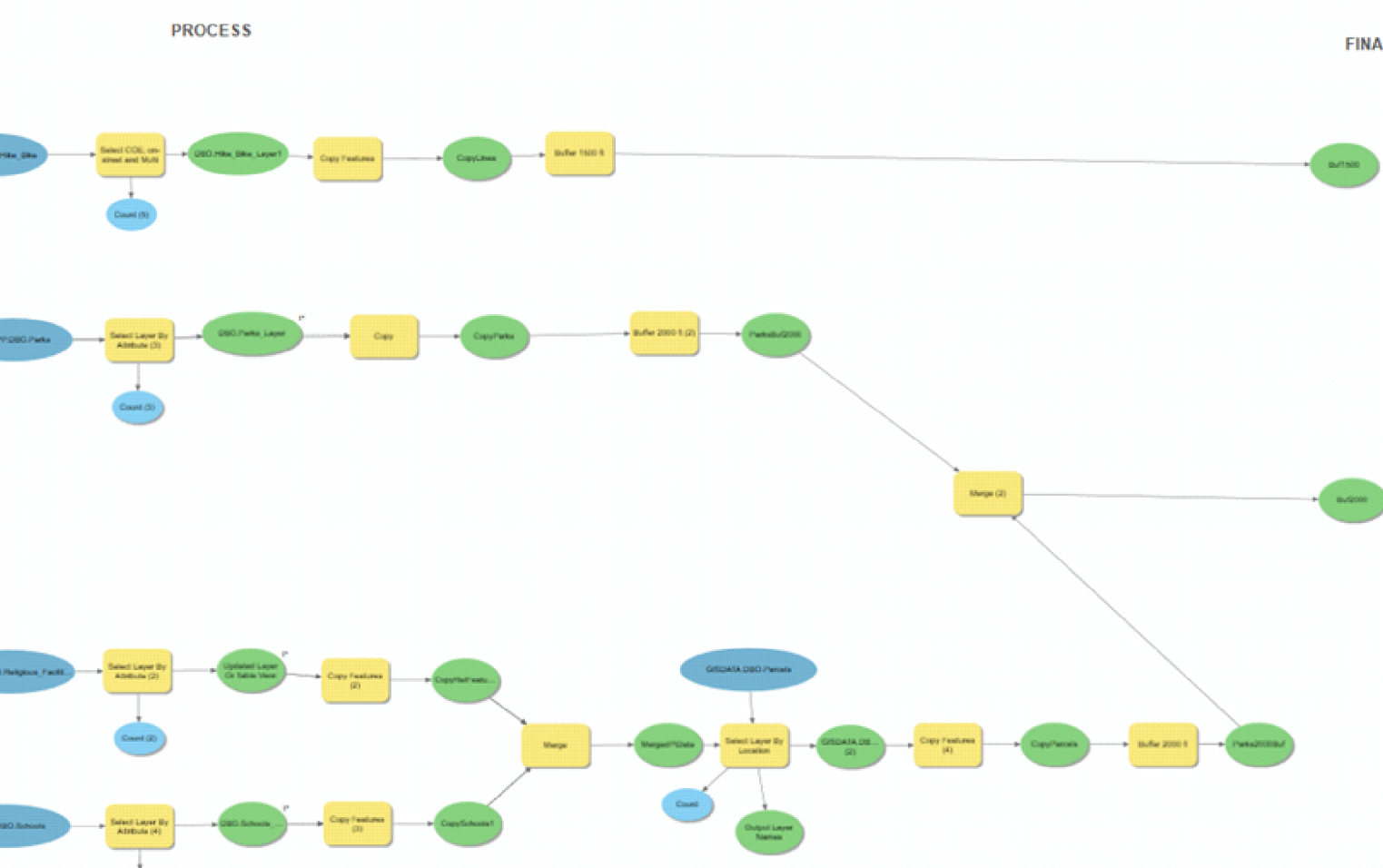
Issue: Support of Fire and Police in any Emergency Situation

GIS aims to be able to support Police and Fire as needed. The use of Emergency exercises widens out eyes to what may be a need in the future and allows for us to sharpen our skills.

WISH LIST

For Fire

- Fire Hydrant Closest to App for citizens to identify their closest hydrant for insurance purposes. Would save Fire Admin staff from having to do it.
- Fire Hydrant maintenance form
- Fire Dashboards



Party Location*

If you the organizer's address provide feedback eg. Party Name

Will you require barricades*

Barricades will be delivered and picked up from the organizers address

☐ Yes, 1 barricade

☐ Yes, 2 barricades (max)

☐ No barricades

Block Party Competition*

☐ Entering competition

☐ Not competing

HOA Party*

If a HOA party enter number of houses in subdivision in box below. This isn't required for an individual party.

☐ HOA party

☐ Individual party

Number of houses in subdivision

Request Visits From

☐ Police Vehicle

☐ Fire Truck

Note directions camera captures in fields below

VIDEO STORAGE

enter hours, days or weeks

COLOR

yes or no

FRONT

yes if recorded by camera

BACK

yes if recorded by camera

DRIVE

yes if recorded by camera

ALLEY

yes if recorded by camera

FRONT DOOR

yes if recorded by camera

Note directions camera captures in fields below

VIDEO STORAGE

enter hours, days or weeks

COLOR

yes or no

FRONT

yes if recorded by camera

BACK

yes if recorded by camera

DRIVE

yes if recorded by camera

ALLEY

yes if recorded by camera

FRONT DOOR

yes if recorded by camera

