

The Integrated Power of GIS & GPS: A Municipality Case Study

for SCAUG 2023

Laura Chapa, Nik Smilovsky, Ph.D., GISP, and Jordan Carmona

April 25, 2023



Agenda

A presentation slide with a blue background and a map of Texas. The map shows major cities like Dallas, Austin, San Antonio, and Houston. A blue dot is placed on the Dallas area. In the top left corner, there is a circular logo with a compass rose and a star. The text on the slide reads:

Agenda

- Meet the Town
- The Need - *why GIS?*
- The Solution
 - Software
 - Hardware
 - People
- The Result

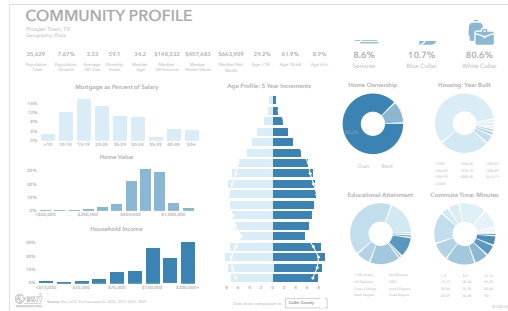


Meet the Town

Town of Prosper	Choose Infographic Community Profile
-----------------	---

Prosper Town, TX

Fit page



The Need

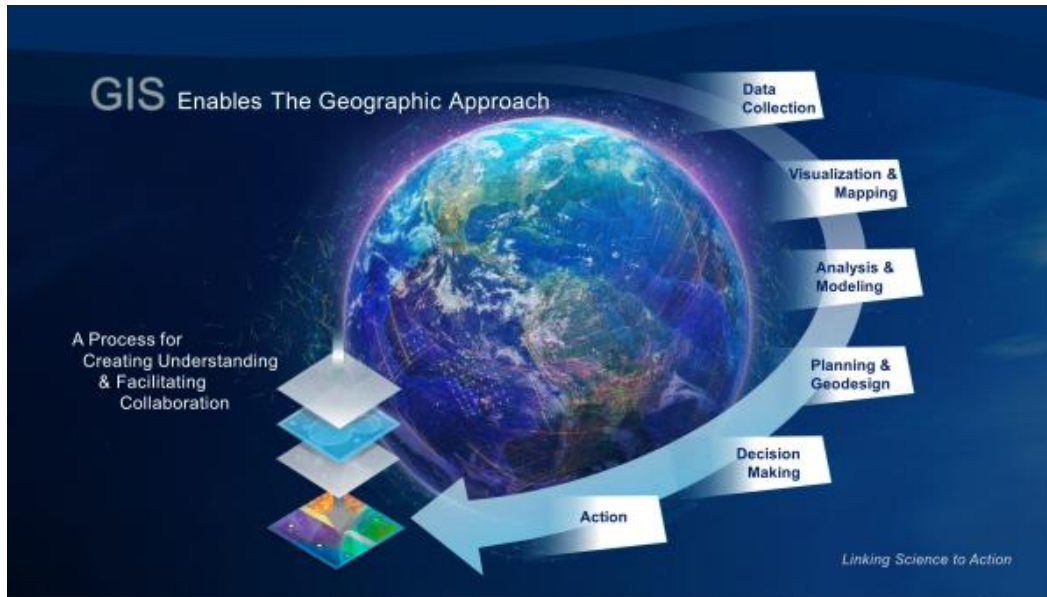
The Town of Prosper was paying for GIS services from the City of Frisco. When they decided to bring GIS in house, this led to the procurement of an Esri Enterprise Agreement as well as the hiring of a GIS Manager.



The Solution:

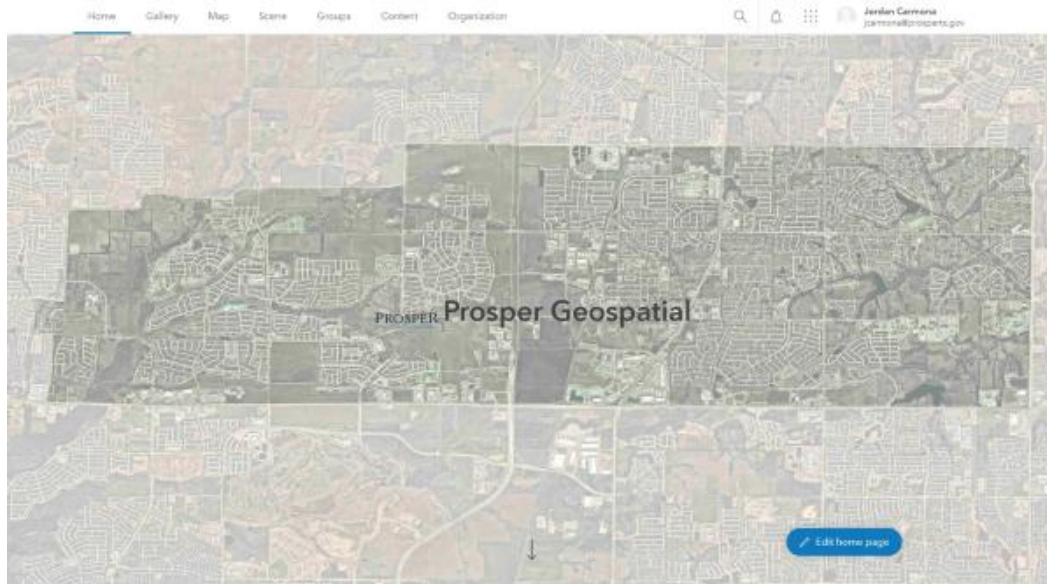
1) Software

ArcGIS offers unique capabilities and flexible licensing for applying location-based analytics to your business practices. Gain greater insights using contextual tools to visualize and analyze your data. Collaborate and share via maps, apps, dashboards and reports.





Internal sharing





Public sharing

General

Home page

Gallery

Map

Items

Groups

Utility services

Member roles

New member defaults

Marketplace

Collaborations

Credits

Security

Distributed

Distributed collaborations allow ArcGIS Online and ArcGIS Enterprise organizations to share and sync content in groups. When your ArcGIS Online organization participates in a distributed collaboration, it becomes the host. As the host, you may invite one or more ArcGIS Enterprise guests to enable the sharing of layers, maps, and files via groups.

Distributed collaborations are trusted relationships where the terms and conditions set by all organizations apply.

[Learn more about distributed collaborations.](#)

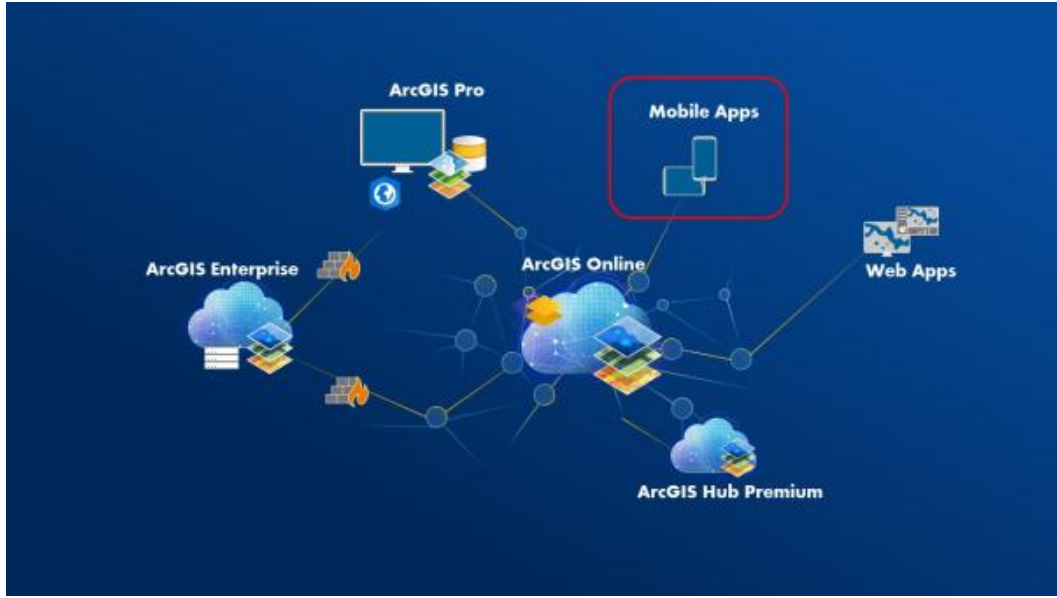
Collaborations / ArcGIS Online to Prosper Production: Workspaces

Prosper to Prosper collaboration

Host Organization: Town of Prosper
Contact Person: Data Core Team [EDIT](#)

[Create Workspace](#) [View Guests](#)

Workspace	Group	Action
Public Bulk Layers	Prosper to Prosper	





2) Hardware

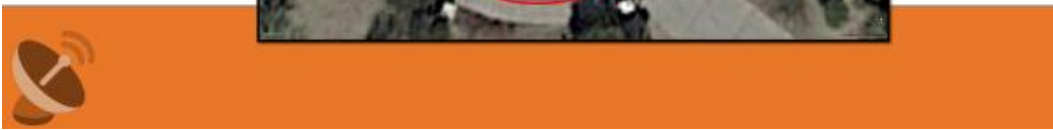
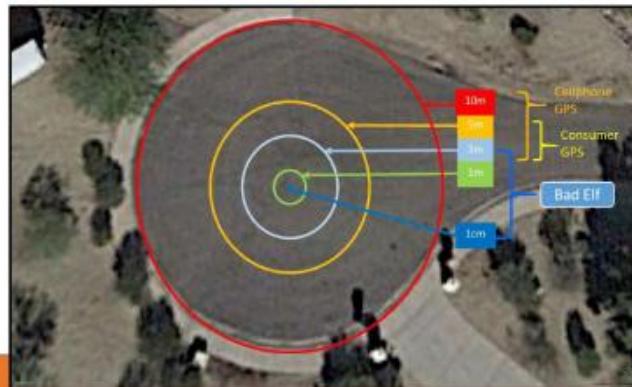
Bad Elf Flex offers a trailblazing, survey-grade receiver that delivers flexible accuracy at a highly affordable price. This is just the beginning, together we can streamline your workflows. Designed and built with world-class technology, Bad Elf Flex improves your field work experience.

BAD ELF INTRODUCTION

Bad Elf's line of GNSS receivers empower GIS and survey professionals to collect high-accuracy field data using any phone, tablet, or laptop. Our products work with any location-based app running on iOS, Android, and Windows.



THE SOLUTION, BAD ELF FLEX



THE SOLUTION, BAD ELF FLEX

Bad Elf Flex:
 2 modes, standard & extreme
 30-60cm and or ~1cm spatial accuracy
 Survey-grade
 Extremely affordable
 "Swiss Army Knife"
 App agnostic



ADVANCED FUNCTIONALITY



Base/Rover

Laser Offset

Drone Mapping



3) People

Pioneer Package Training

The Bad Elf Pioneer Package is the ultimate way to start confidently collecting high-accuracy GNSS data with the best hardware and software on the market. Getting started is simple. Just follow work through these simple steps.

Pioneer Package

The Pioneer Package is a fusion of Bad Elf hardware, software, and organization-specific training designed...

<https://bad-elf.com/pages/pioneer-package>



Bad Elf on-site training the Town of Prosper

Esri Training

Esri Academy | Your Location for Lifelong Le...

Sign up to receive information about the latest training and certification opportunities, including new exams,...

<https://www.esri.com/training/>

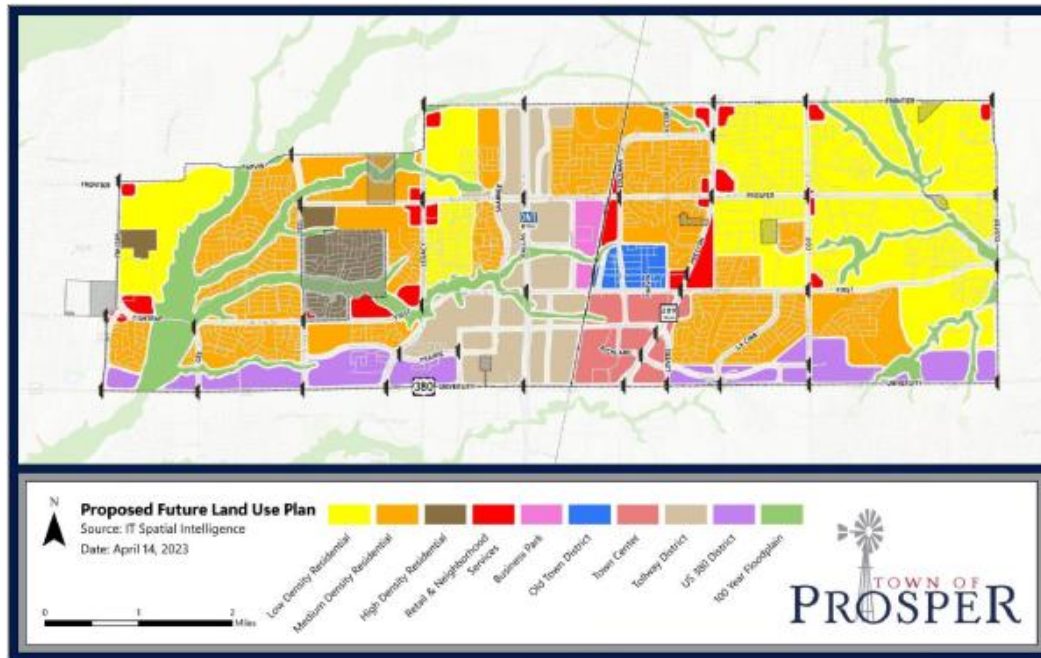
Learn ArcGIS

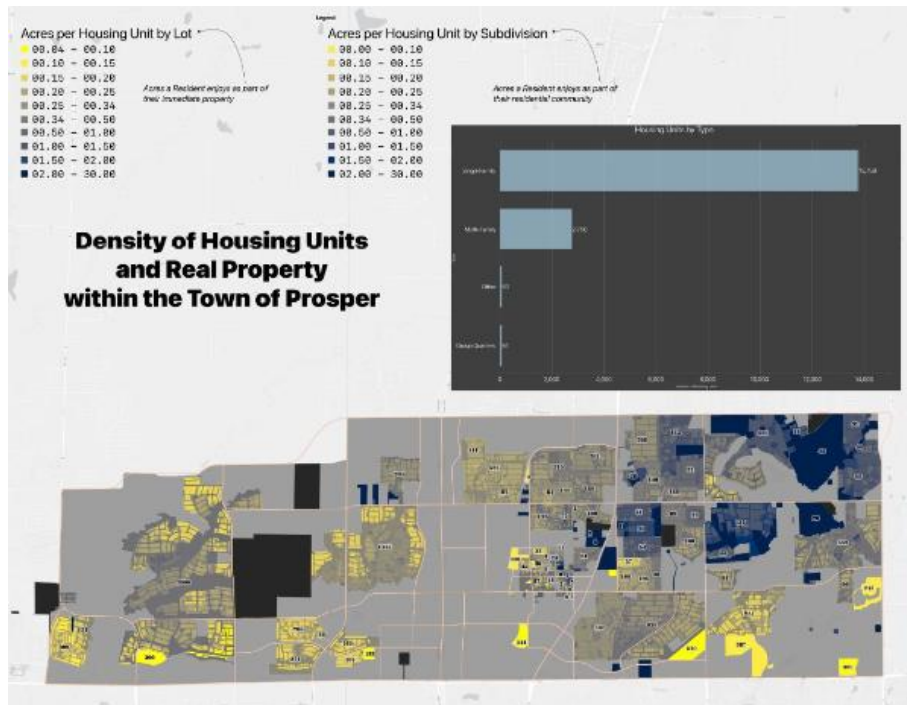
The new Learn ArcGIS Hub experience provides collections of curated content to guide you in your...

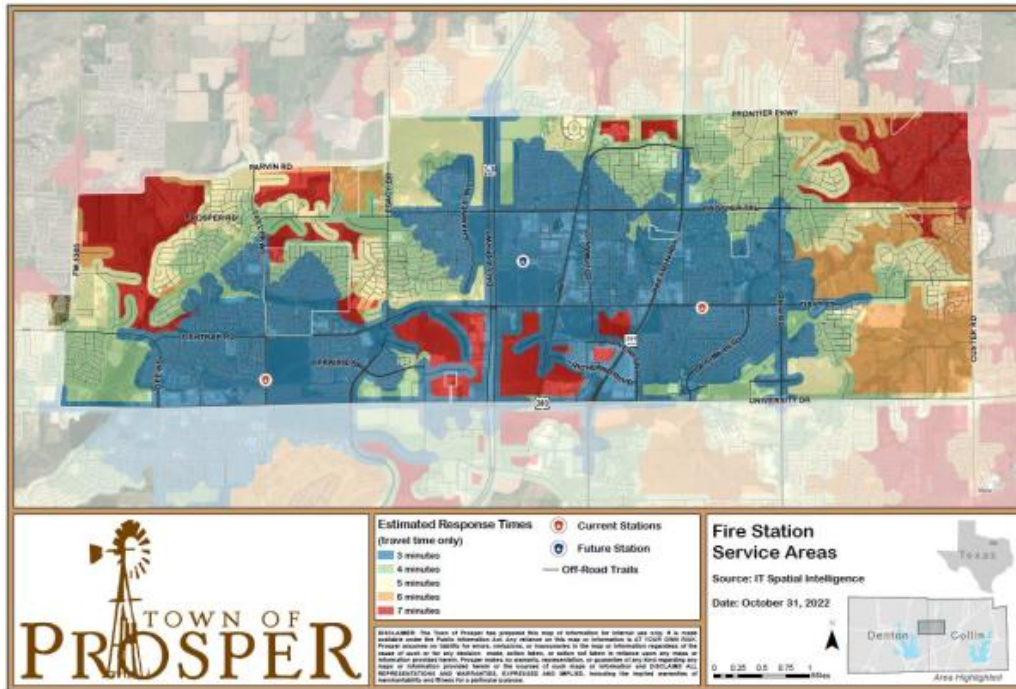
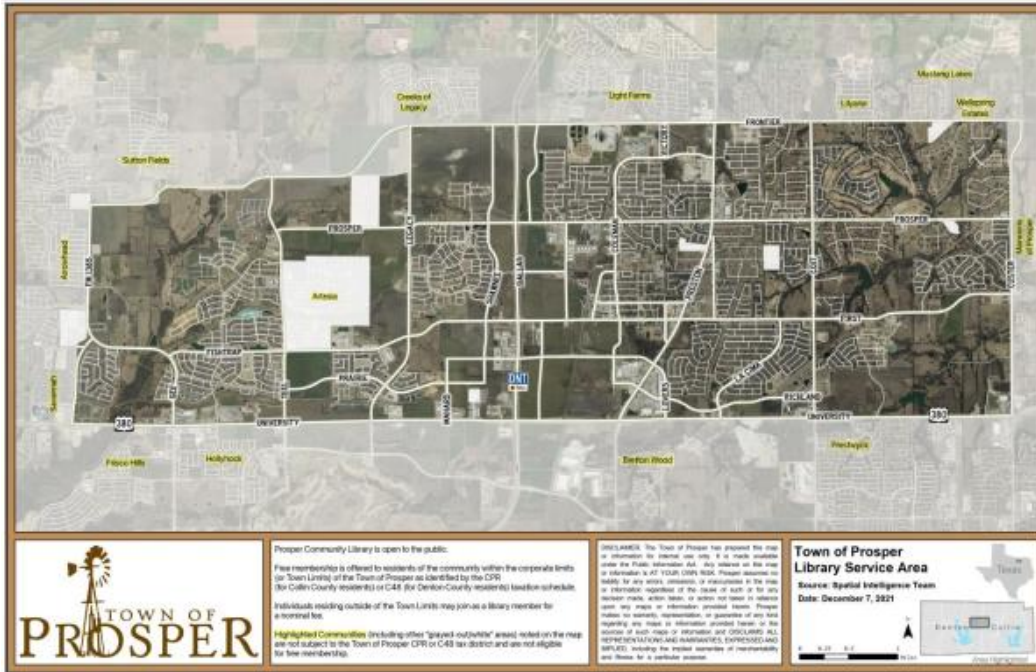
<https://learn-arcgis-learnarcgis.hub.arcgis.com/>

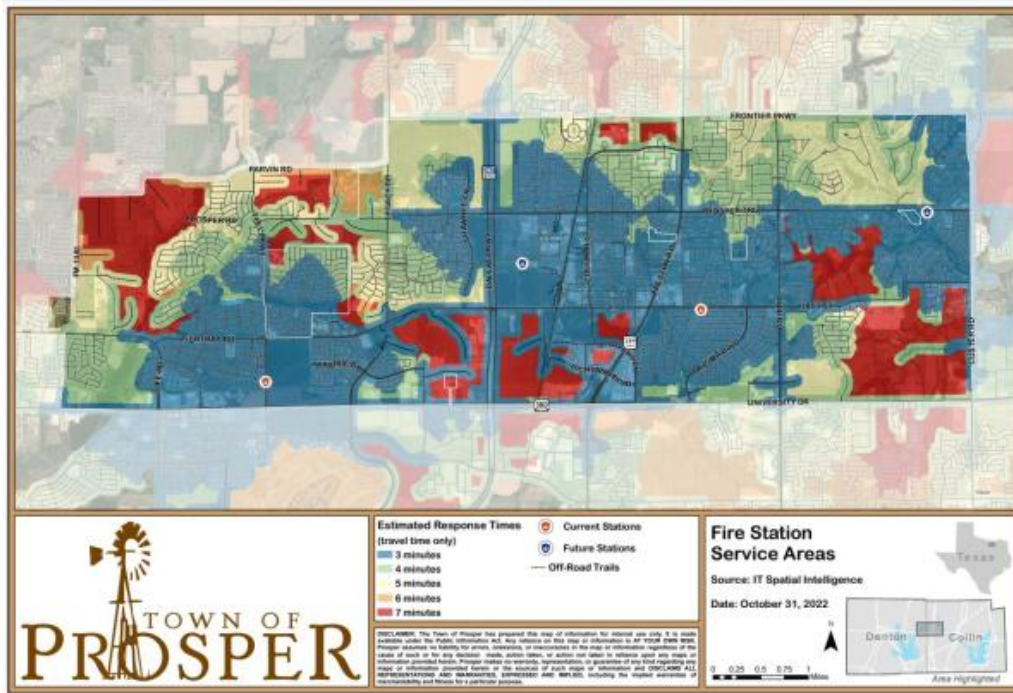


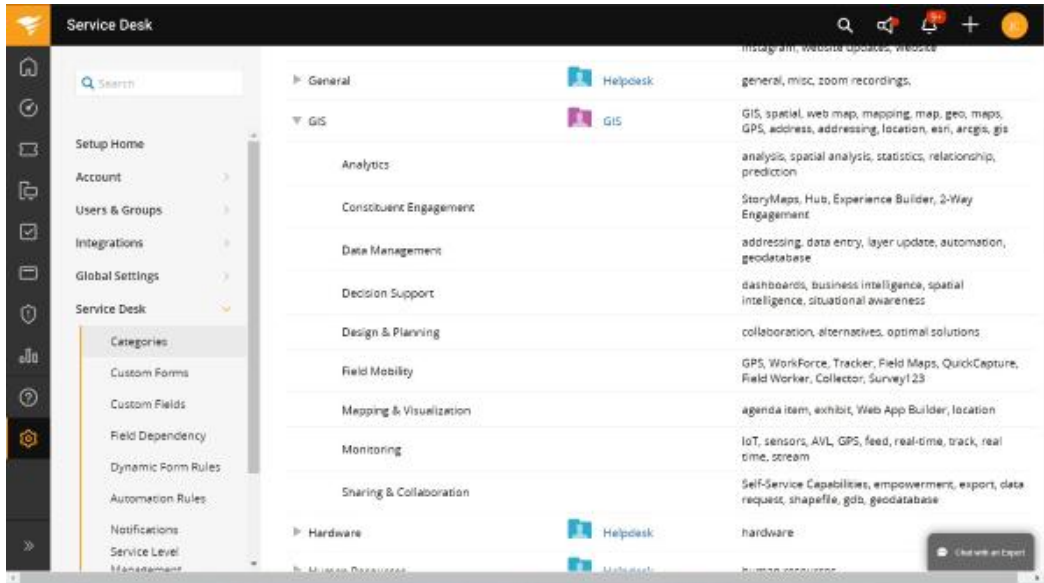
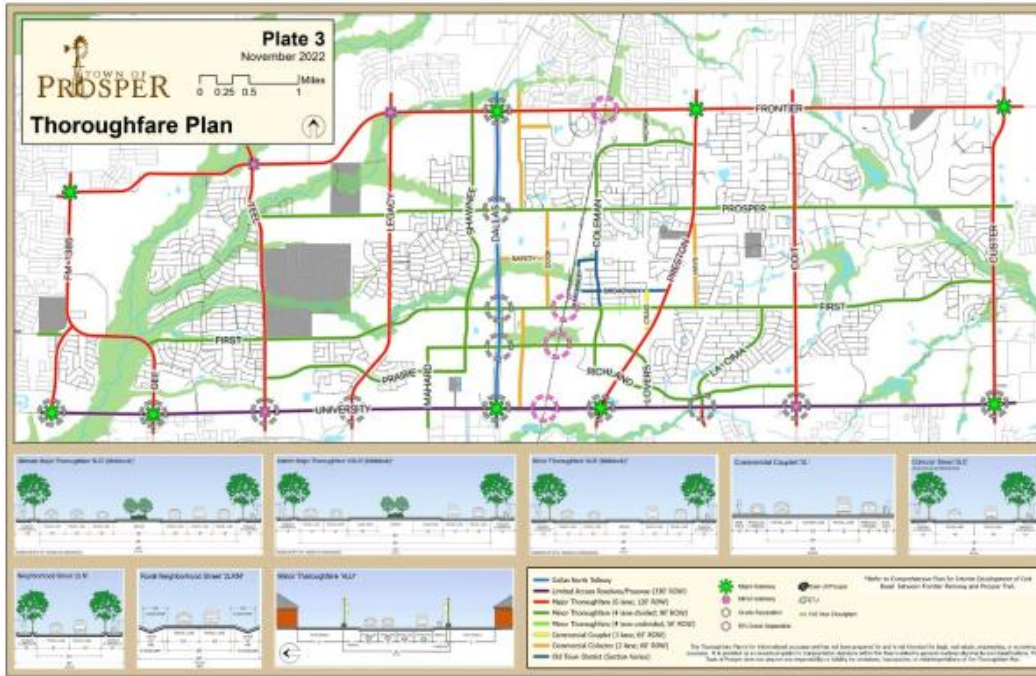
The Result

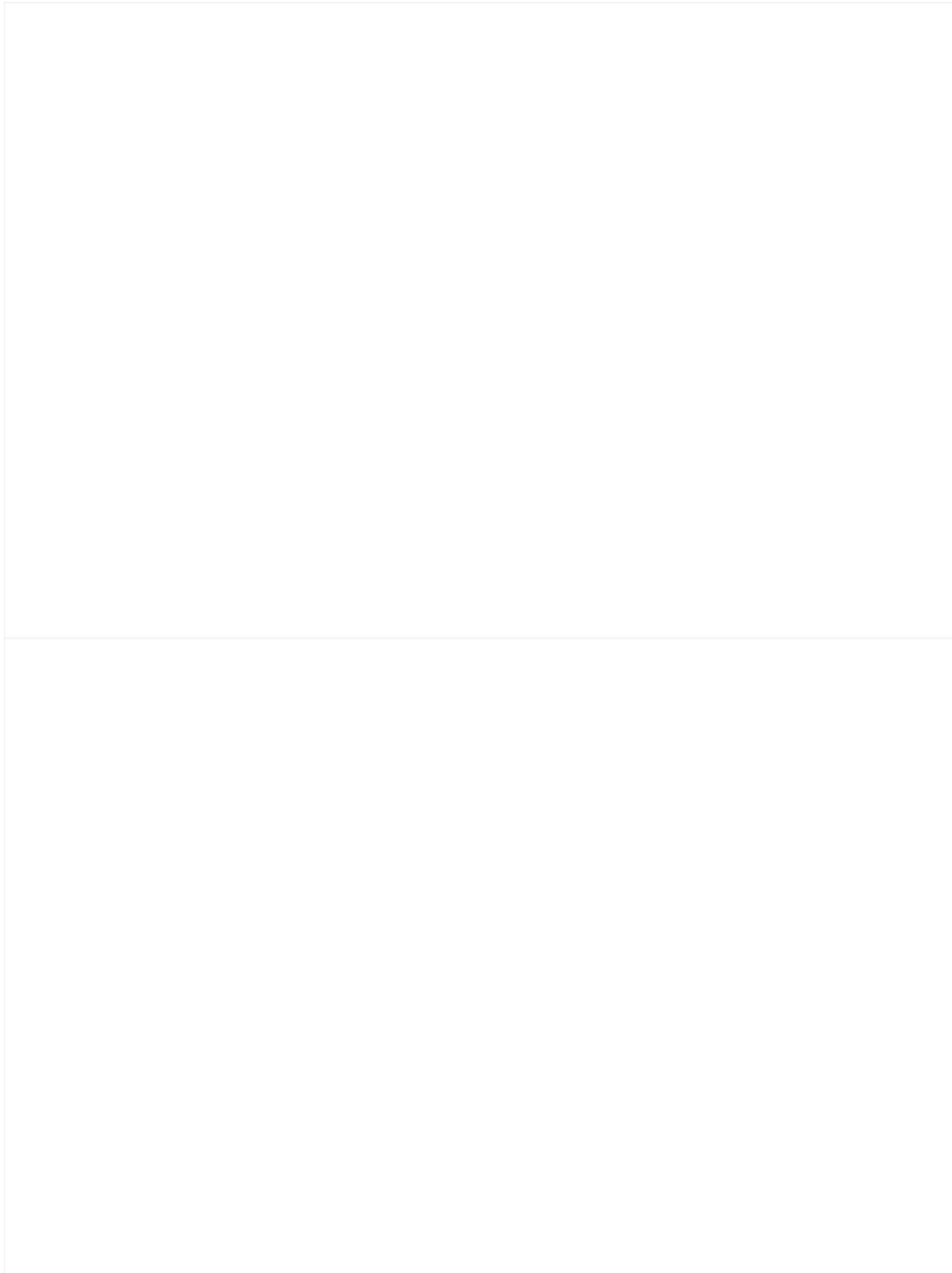




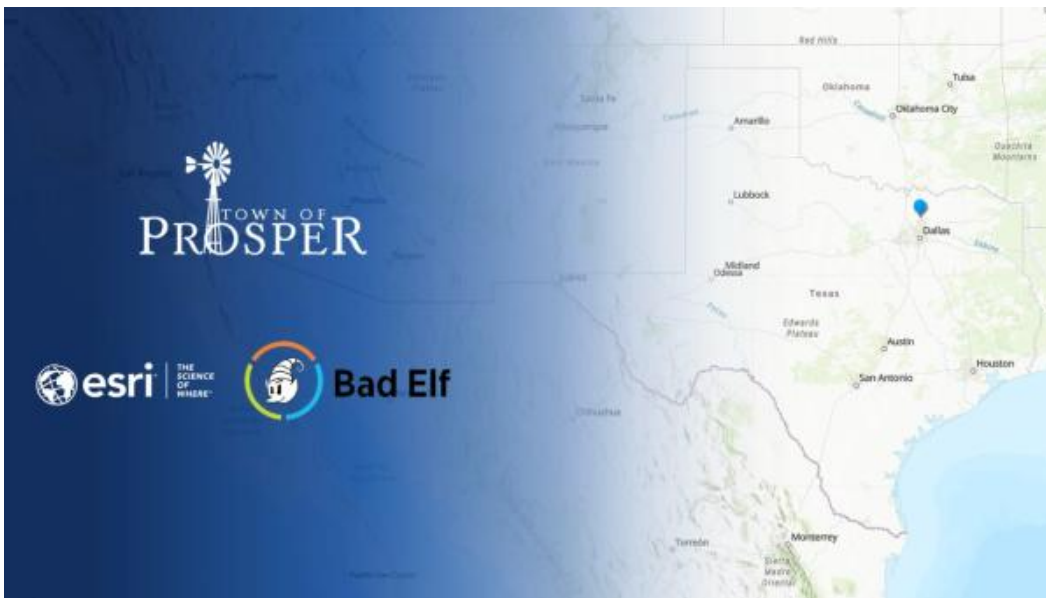








Conclusion





**Laura Chapa, Esri
Solution Engineer**

lchapa@esri.com

**Nik Smilovsky, Ph.D.,
GISP, Bad Elf Geospatial
Solutions Director**

nik@bad-elf.com