

Mississippi Area Remapping Strategy



*Encouraging the Next
Generation*

SCAUG2010



What we will cover

MARS Program & Partners

Participating Community Partners & Mentors

Participating Schools

Products of Participation

GeoMentor

GIS Day 2010

Questions



Expect Growth In GIS

"The geospatial model serves as a guide for those who want to both find a good job and map out a long-term career pathway in any of several geospatial technology fields including surveying and mapping, computer science and information science."

Department of Labor Secretary Hilda L. Solis

"Geospatial products and specialists are expected to play a large role in homeland security activities. Information gathering needs to protect critical infrastructure have resulted in an enormous increase in the demand for such skills and jobs."

Lorraine Castro, NIMA Human Resources Department

"Increasing demand for readily available, consistent, accurate, complete and current geographic information and the widespread availability and use of advanced technologies offer great job opportunities for people with many different talents and educational backgrounds. "

(U.S. Geological Survey and U.S. Bureau of Labor Statistics)



“The number of new jobs available from Mississippi’s geospatial businesses is far outpacing the number of qualified candidates to fill available vacancies. The MARS program was established to help address this ongoing demand for an educated, well-trained workforce and to create a pipeline of the next generation of employees for Mississippi’s geospatial industry.” Dr. Greg Easson, EIGS Executive Director



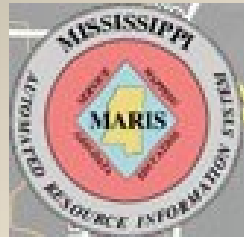
Participating Colleges



Community Partners



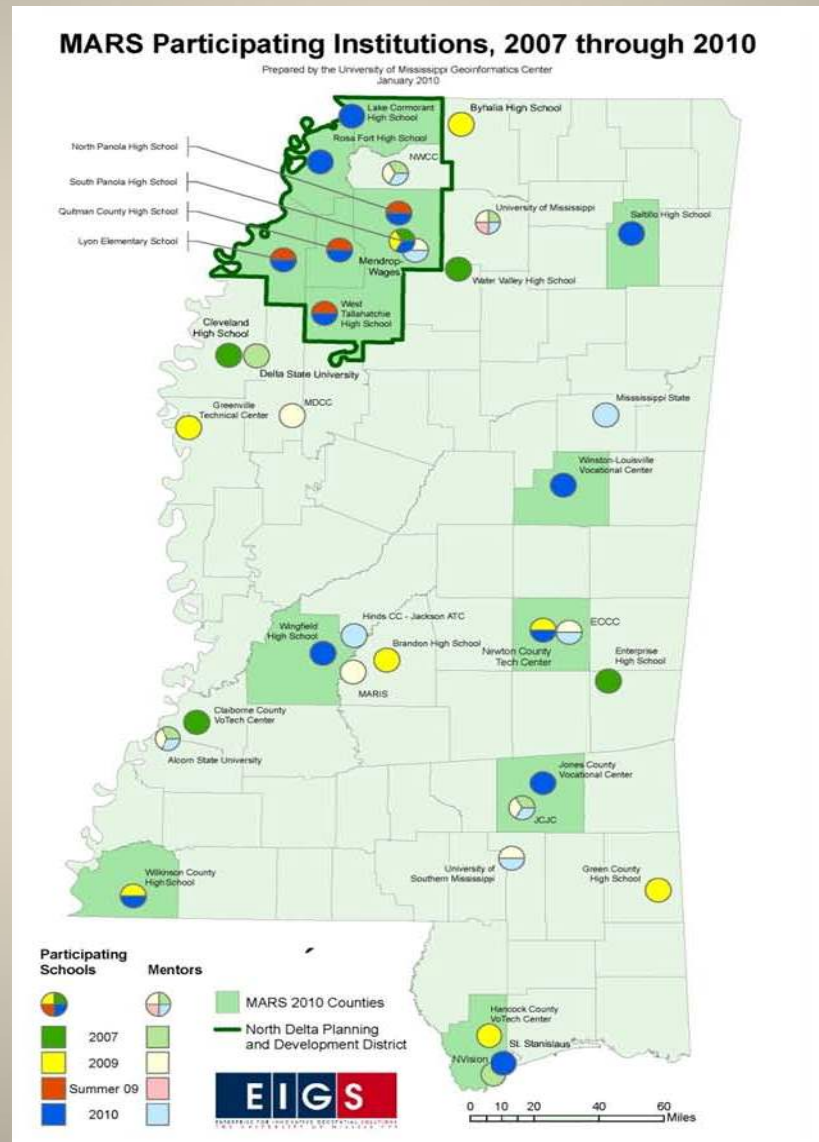
**Tallahatchie County
EMA**



**Newton County
EMA**



Participating Schools



SCAUG2010



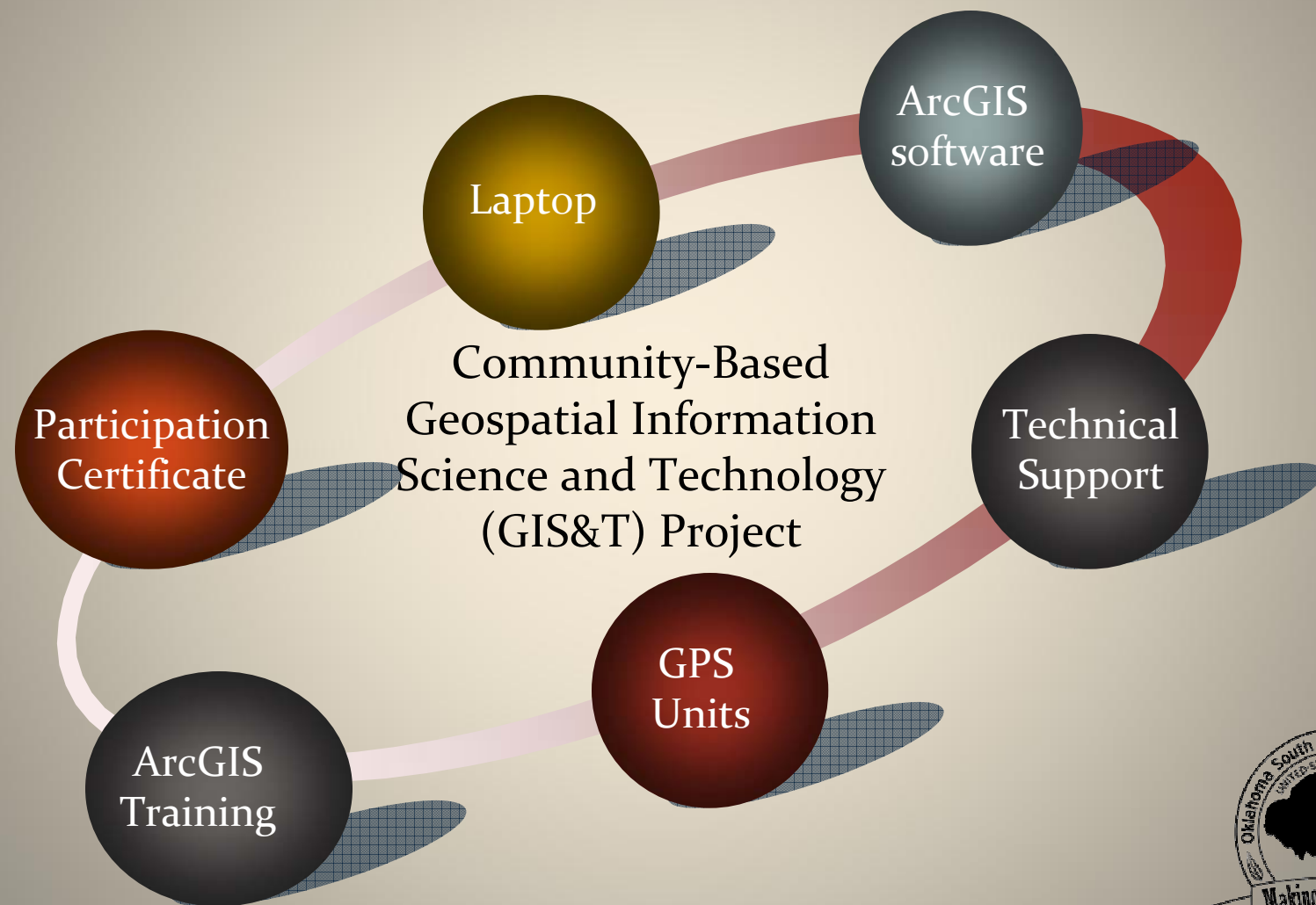
Student Participants



SCAUG2010



Benefits



Student Tools



Trimble GeoXM



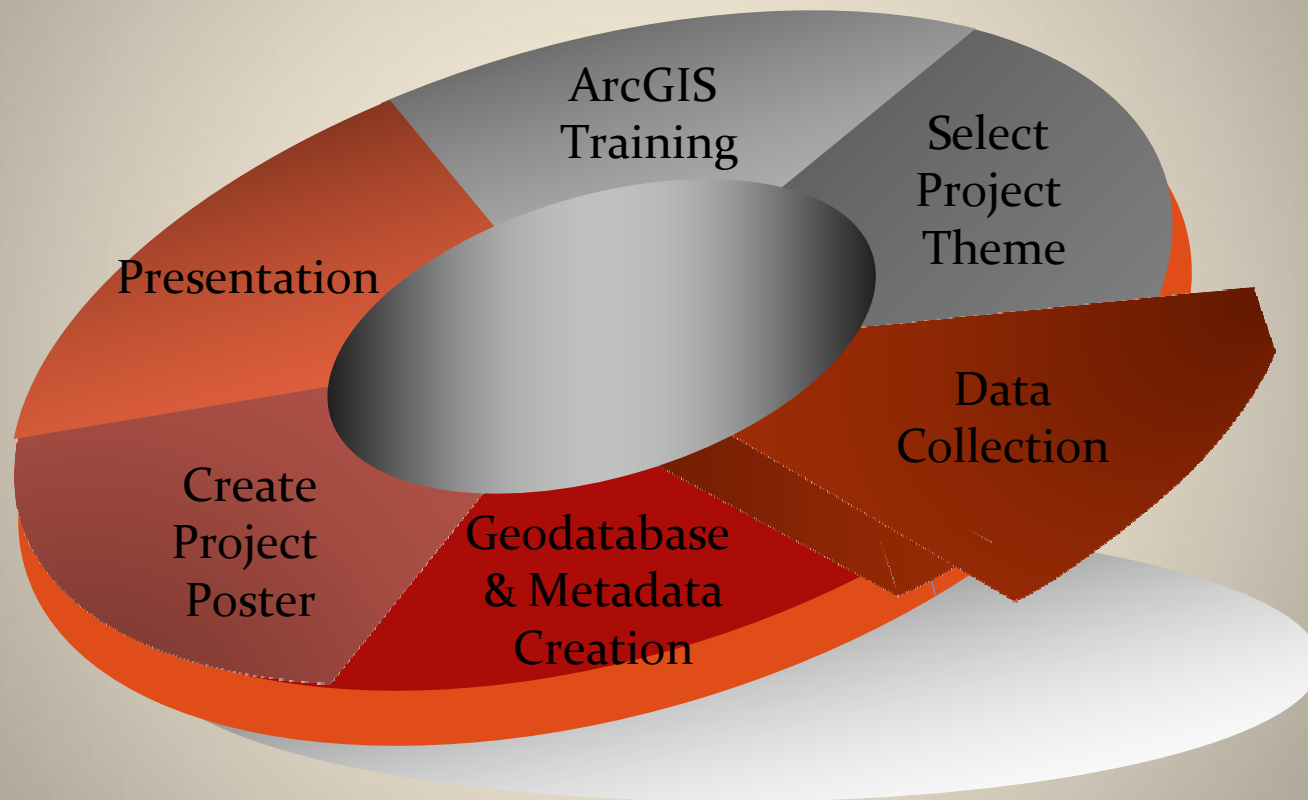
Magellan Triton



Garmin E-trex
Vista



Community-Based Geospatial Information Science and Technology Project



What They Learn



Software Training



Teamwork



Data Collection



Real World Application



Competition



Data Analysis



GPS Training



Presentation &
Public Speaking



Project Themes

2008

1. Locate Fire Hydrant
2. 16th Section Asset Mapping
3. Interactive Tourism Map
4. School Bus Routing
5. Asset Inventory

2009

1. Infrastructure Inventory
2. Civil War Site Mapping
3. Business Corridor Analysis
4. Urban Hazard Tree Assessment
5. School Safety Exit Mapping
6. E911 Address Location
7. Manhole Inventory
8. Billboard Inventory

2010

1. Agricultural Sciences Site Selection
2. E911 Point CADD Incorporation
3. Tourist Attraction Mapping
4. Infrastructure Inventory
5. Vacant Home Identification
6. Fire Station Feasibility Study
7. Food Allergies & Local Restaurants
8. Gulf Coast Restoration
9. Urban Forestry Grant Inventory
10. County Bridge Locations
11. Healthy Trails Mapping



2008 & 2009 Winners

A-10 TUESDAY, JUNE 2, 2009

THE PANOLIAN / BATESVILLE, MS

South Panola students take top prize for mapping project

By Rita Howell

A team of students from South Panola High School took the top prize in the 2009 Mississippi Area Remapping Strategies competition last month in Jackson. Students from eight schools across the state had been chosen in January to design and complete a project in their communities using geospatial information for high-tech mapping.

The MARS program provided equipment and paired high school students with experts at the state's community colleges and universities.

Maegan Bolton, Carly Baker, Lauren Calvert, Lindsey Calvert, James Kilpatrick and Matthew Hubbard won a Trimble GeoXM, a \$2,000 handheld GPS survey-grade unit for the school. Their technology



After taking the prize in the MARS competition in Jackson in May, these SPHS students are preparing to take their geospatial technology projects to the Technology Student Association's national convention in Denver later this month. Shown are (from left) Lindsey Calvert, Lauren Calvert, Maegan Bolton and Carly Baker.

The Panolian photo by Rita Howell

be used."

The team is not finished with its work. They are all members of the Technology Student Association and have qualified to enter their projects in competition at the TSA national convention

in Denver June 28-July 2.

The MARS program is coordinated statewide by Joyce Brasell of Batesville, who is director of Workforce Planning and Development at Northwest Community College.

NWCC sets auditions for play

Auditions for Northwest Mississippi Community College's next production, "Othello" will be held on Monday and Tuesday, June 15 and 16 at 6:30 p.m. in the Fine Arts Auditorium on the Senatobia campus, according to Terry Scott, Fine Arts Technical Director.

Scott said that there are approximately 15-20 roles

available for males and females ages 17 and up. No roles have been pre-cast, Scott said.

"Othello," one of Shakespeare's most well-known tragedies, was believed to have been written around 1603. For more information, contact Scott at 662-562-3332 or e-mail tscoott@northwest-ms.edu

Visit www.panolian.com

South Panola High School, Batesville, MS

SCAUG2010



2010 Winners



Lake Cormorant High School, Walls, MS

SCAUG2010



Special Thanks



Joyce Brasell

**Northwest Community College
Workforce Planning &
Development
Director, Retired**



**Dr. Gregory L. Easson, Director Mississippi
Mineral Resources Institute/
Center for Marine Resources and
Environmental Technology**

SCAUG2010



**Lisa Stone
Associate Director, EIGS**





Become a GeoMentor

The GeoMentor Program

National Geographic and ESRI have created a new program to inspire educators and community members to work together to improve student learning. People who use geography in their work can help educators and youth see the world in new ways. The GeoMentor program is designed to inspire volunteers to work with a teacher or youth club leader to help kids see, use, and do more geography in and out of classrooms.

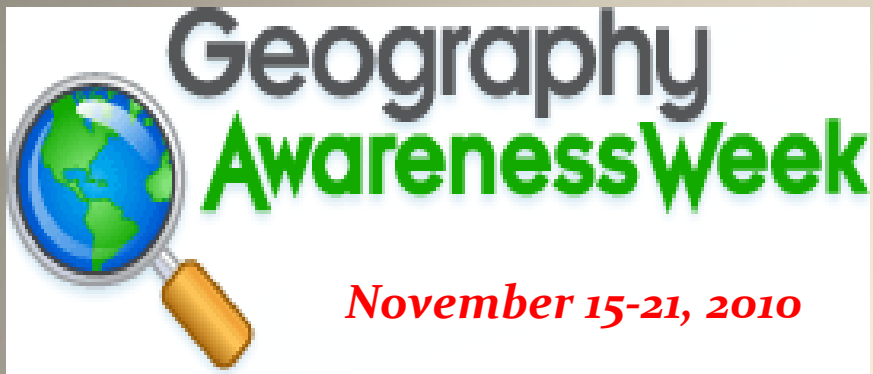
What does a GeoMentor do?

A GeoMentor "adopts" a school, class, or club and supports the educator/s in working with youth. Using tools of geography (such as maps and globes, atlases, charts, imagery, and field work), the GeoMentor helps the educator and youth develop skills in geographic thinking.

<http://edcommunity.esri.com/geomentor/>



GIS Day 2010



<http://www.mywonderfulworld.org/gaw.html>



<http://www.gisday.com/index.html>

Houston Area GIS Day

November 17-18, 2010

hosted at the

University of Houston

University Center 4800 Calhoun Road

Houston, Texas 77004

San Antonio GIS Day 2010

November 19, 2010

hosted at the

At LaVillita Assembly Hall

401 LaVillita , San Antonio, TX 78205

MAGIC GIS DAY

November 18, 2010

Memphis Area Geographic Information Council

Great Hall of Germantown

1900 South Germantown Road

Germantown ,TN



