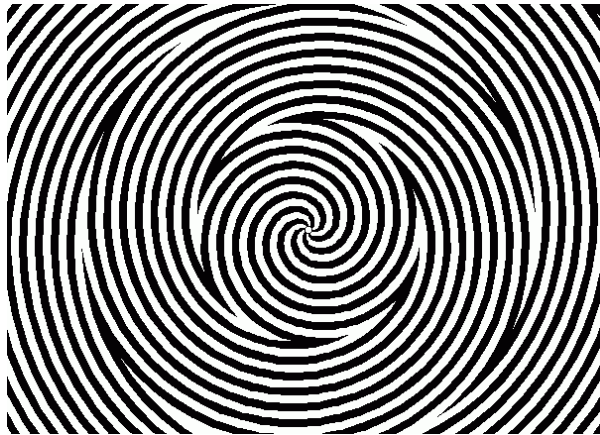




Using 'Workflow Modeling' for Purpose Built Web GIS Solutions

Scott Stafford-Veale
October 25, 2011

Let's go back in time.....



An short historical view of Web-GIS

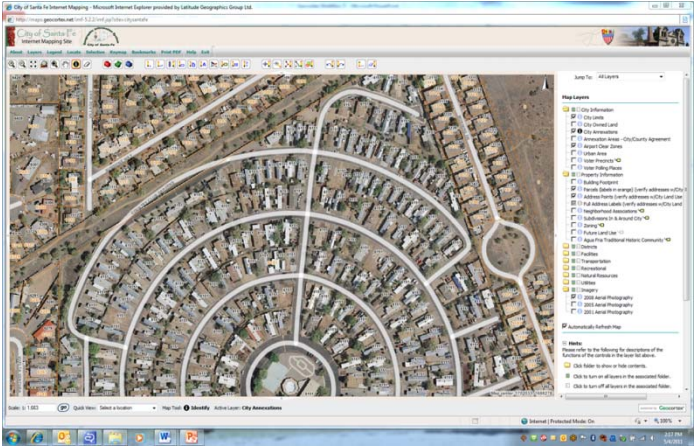
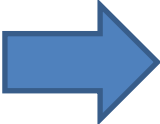
“Web-GIS” Approach

- Early 2000s, Map Servers arrive.....
 - Esri’s ArcIMS (anybody remember ArcView IMS or MapObjects IMS?)
 - MapGuide, GeoMedia
 - UMM Mapserver
 - etc.

“Let’s put desktop GIS apps to the web!”

... Same geocentric paradigm just a different delivery architecture

“Web-GIS” Approach



'ArcView on the Web'.....

Not that there's anything wrong with that

The GIS-centric Model for Deploying Web-GIS

- Esri's HTML Viewer
- Geocortex IMF (ArcIMS based)
- Web ADF (ArcGIS Server)



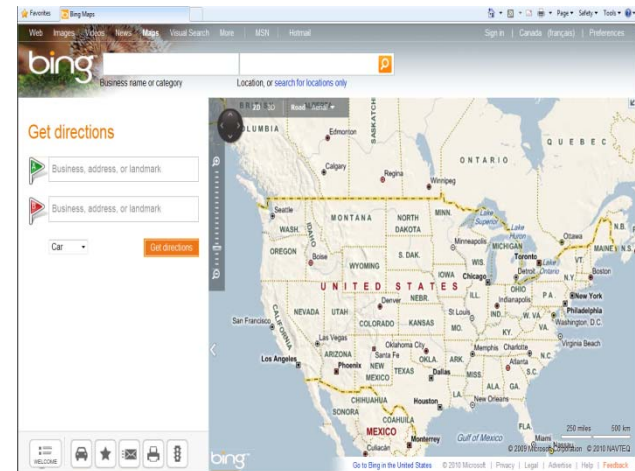
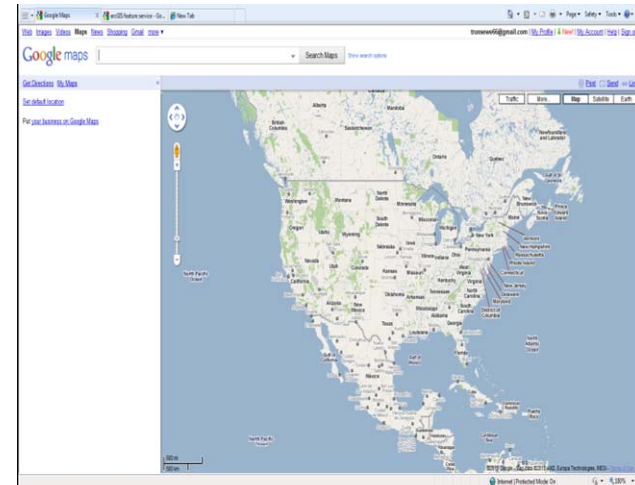
Loads of functionality...
Layers everywhere... nested, visible, invisible, active
and Buttons, tools and icons galore....

Nobody wanted to
skimp on.....
“APPLICATION FLAIR”!



Web 2.0 Arrives – Consumer Maps

- Google & Bing
- End user experience improves
- User expectations change
- Simple, Faster!
- Intuitive tools and features
- Users start to expect the same experience in a web-GIS



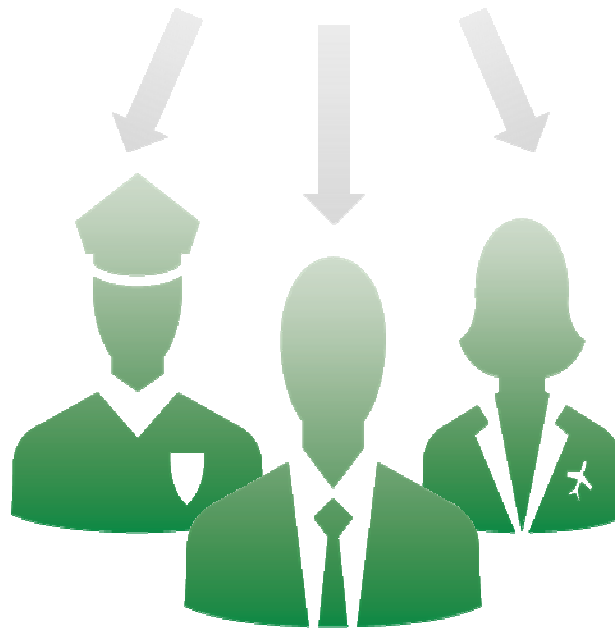
Web 2.0 Arrives – Consumer Maps

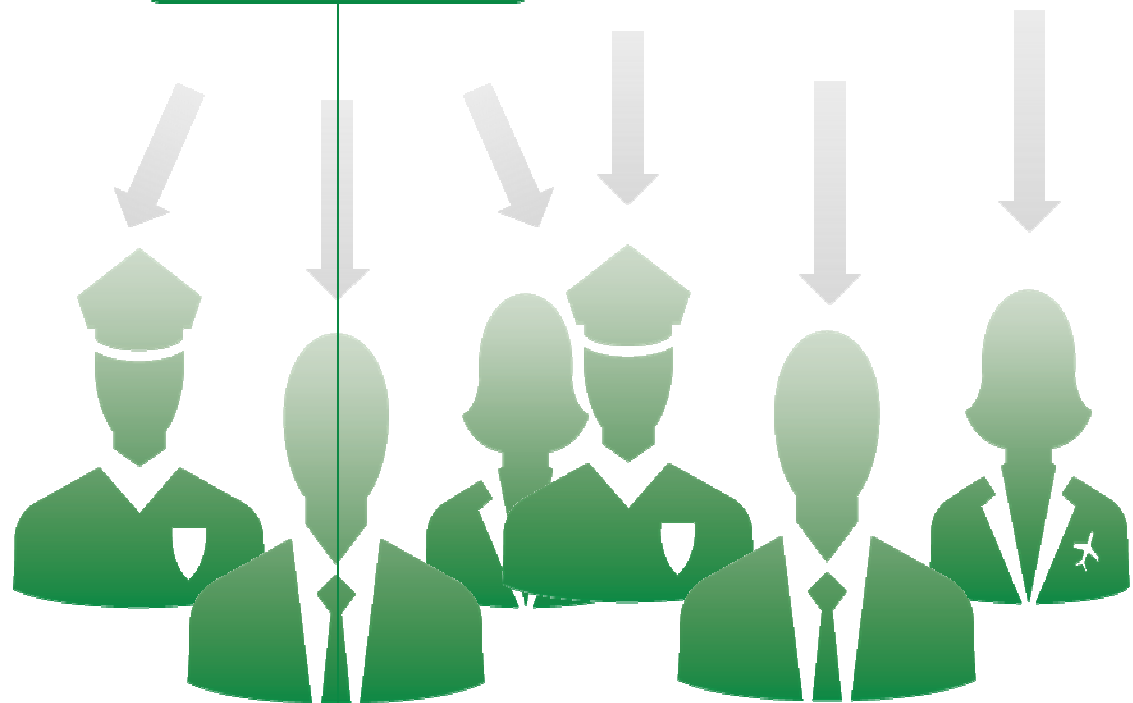
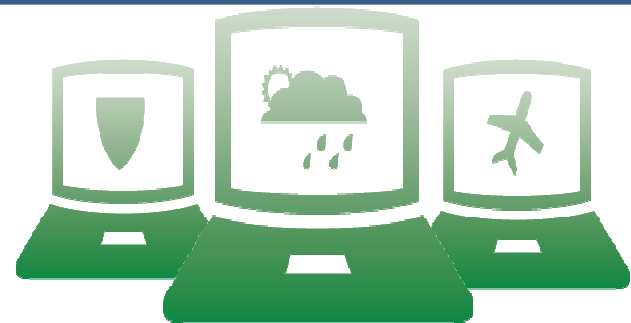
A revolution occurred at Web 2.0.....

But your users still need more

How do we continue to evolve the web-GIS deployment model?

Should we do things the same way we did them with ArcIMS?






Deploying web-based Spatial Applications

- Rich Web GIS Viewers
 - Implemented using configurable .NET, Flex or Silverlight based template viewers
(primarily internal users?)

AND / OR

- Purpose-specific, simple apps
 - Using lightweight Silverlight, Flex or JavaScript APIs and **Workflow Modeling**
(internal and external users)



Workflow Modeling can
fundamentally change the way
administrators and developers
design, deploy, and manage spatial
applications and how we interact
with spatial data.

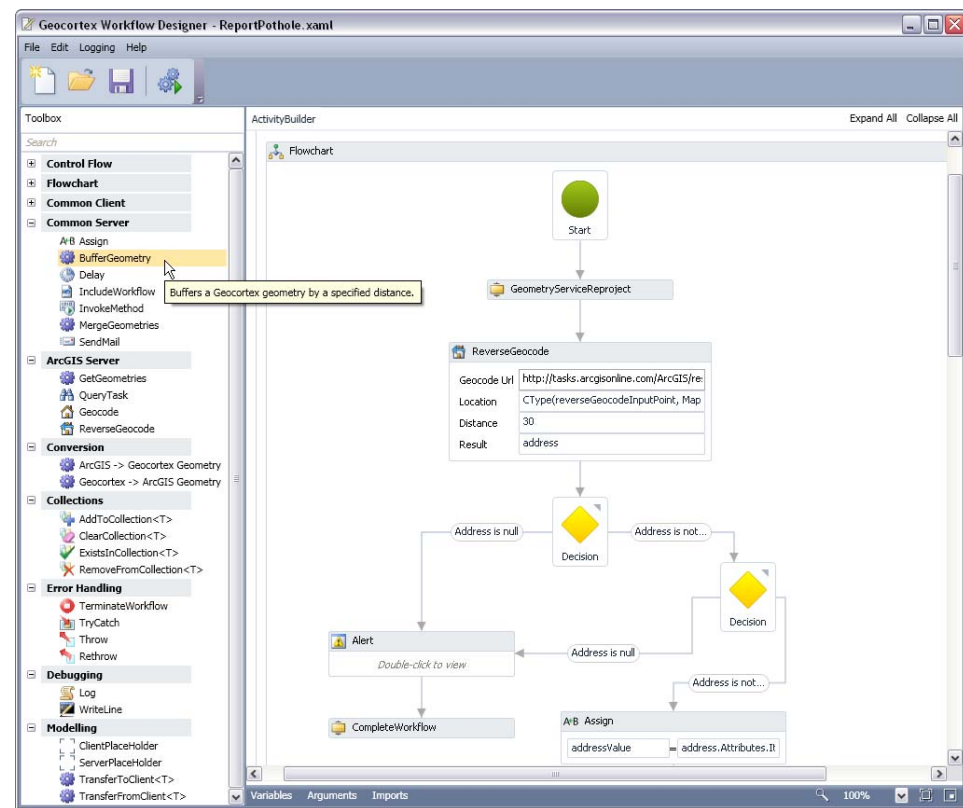
What is a Workflow?

- An automated, interactive process
- A series of “activities” chained together to accomplish a goal
- Includes:
 - Client activities which interact with the user
 - Server activities which automate tasks
 - Plumbing between client and server activities

Geocortex Workflow Designer

Using the desktop **Workflow Designer**, administrators can chain together sets of activities (small units of work) which comprise a workflow.

- Reads/Writes Workflow files
- Drag and drop
- Powerful toolbox
- Simulator to trial and test workflows
- Supports custom activities
- Build forms on the fly



Why Workflow? Why Now?

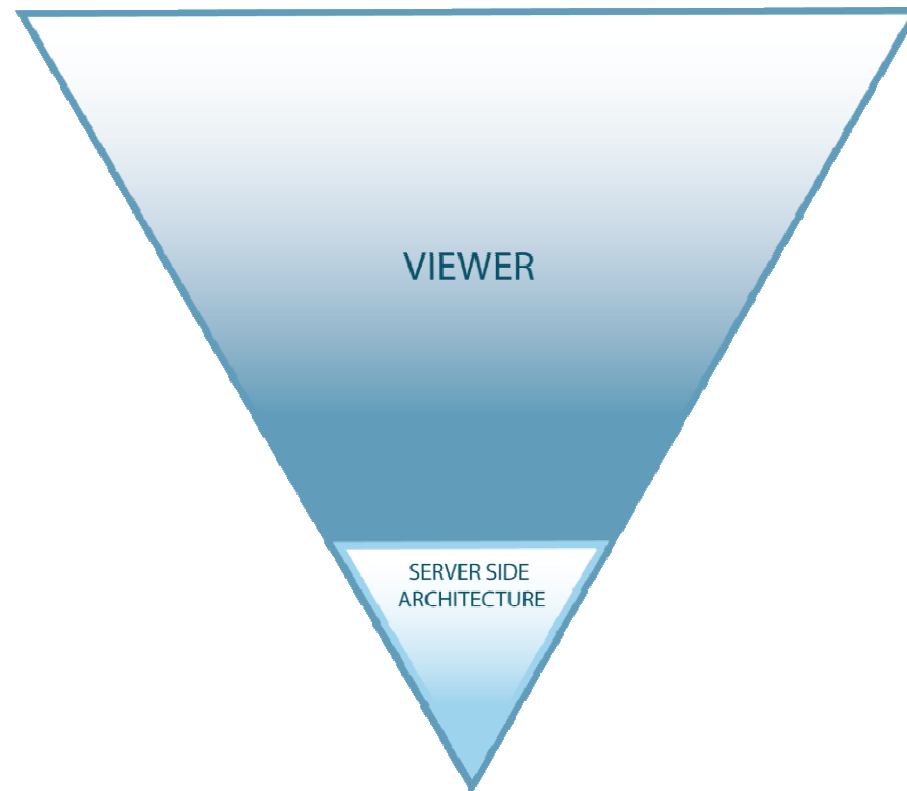
- **Maturing technology**
- **Maturing users and use cases**
- **GIS pushed deeper into the organization**
- **Routine Integration with other Systems**

... GIS apps used by non-GIS users

What does a modern web-GIS App Look Like?

ANSWER #1

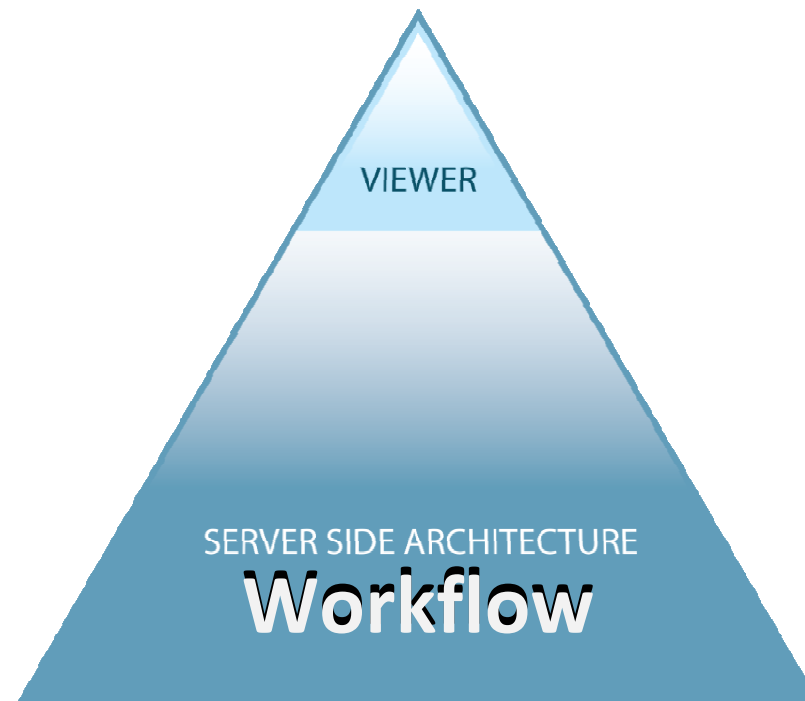
A Rich, 'Thick' VIEWER with impressive browser based functionality.



What does a modern web-GIS App Look Like?

ANSWER #2

A nimble, lightweight purpose specific applications that automates spatial and non-spatial business processes – through Workflow.



Geocortex Workflow

The majority of business processes involving GIS operations can be modeled, streamlined and automated via workflows.

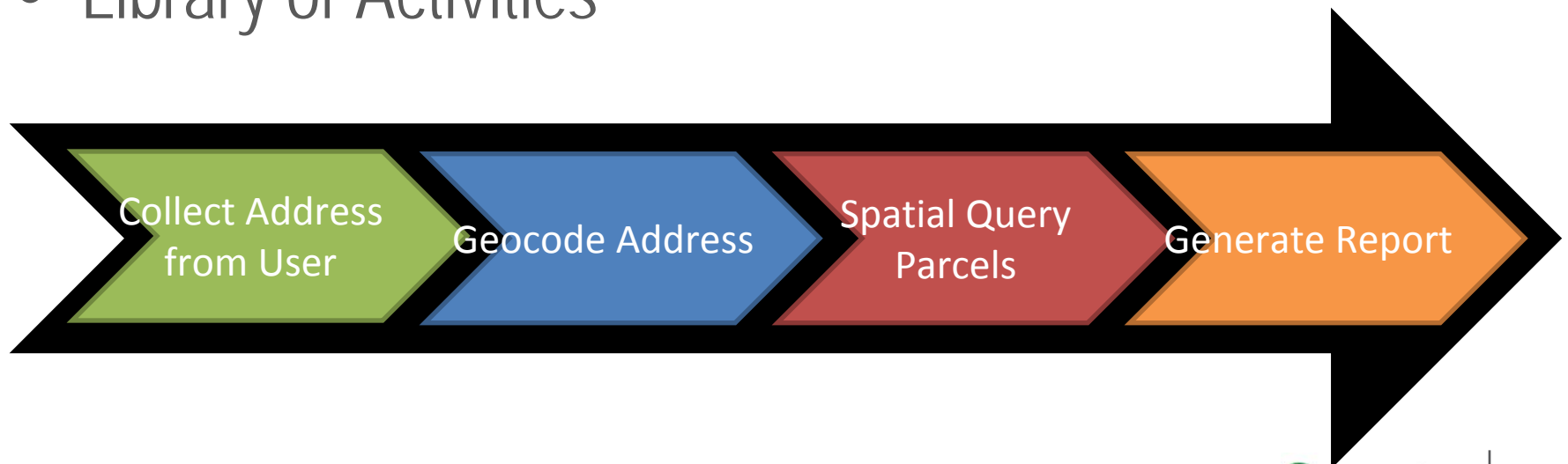
Does the business process.....

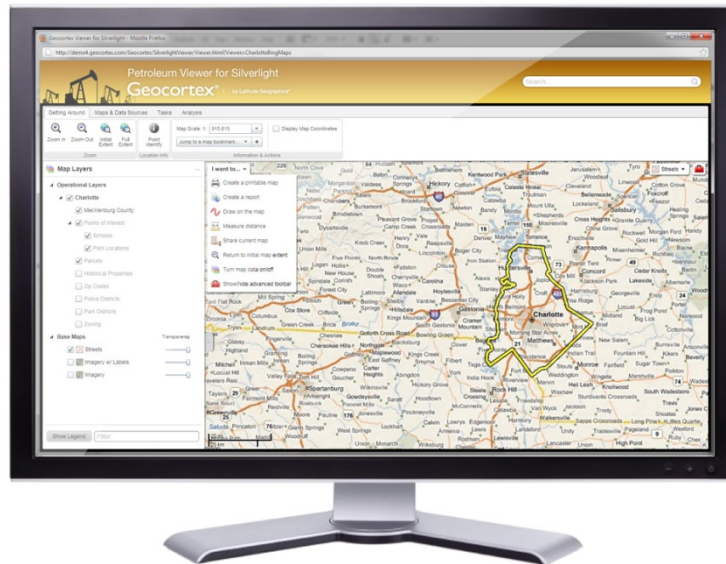
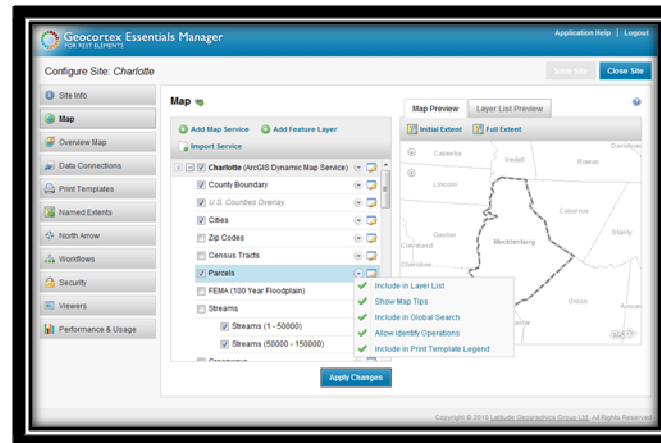
- Require tasks which are done routinely by an individual multiple times per day?
- Span multiple days, involving many individuals or departments?
- Involve some interaction with a map, and/or some GIS analysis or processing?

Define a collection of smaller tasks which, when chained together, create the process

Workflow in Essentials

- Works through REST
- Allows user interaction at any step
 - Human decision points
- Extensible
- Library of Activities





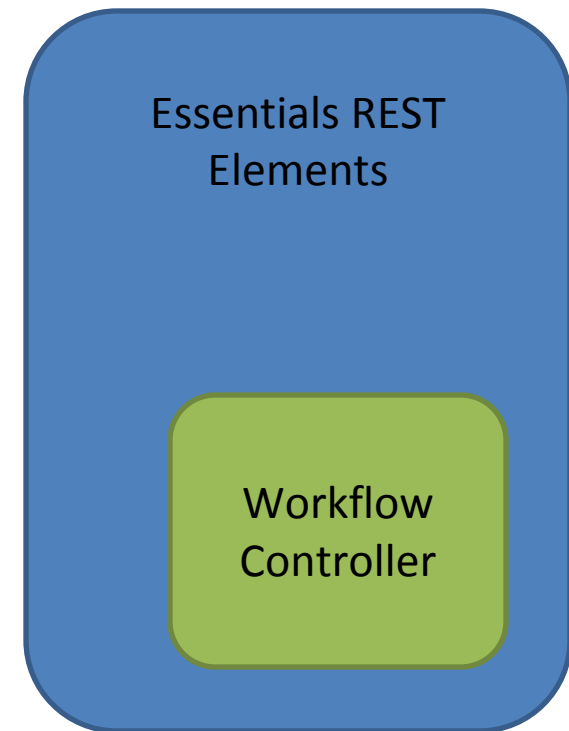
Web (e.g, Silverlight, Flex, HTML5)



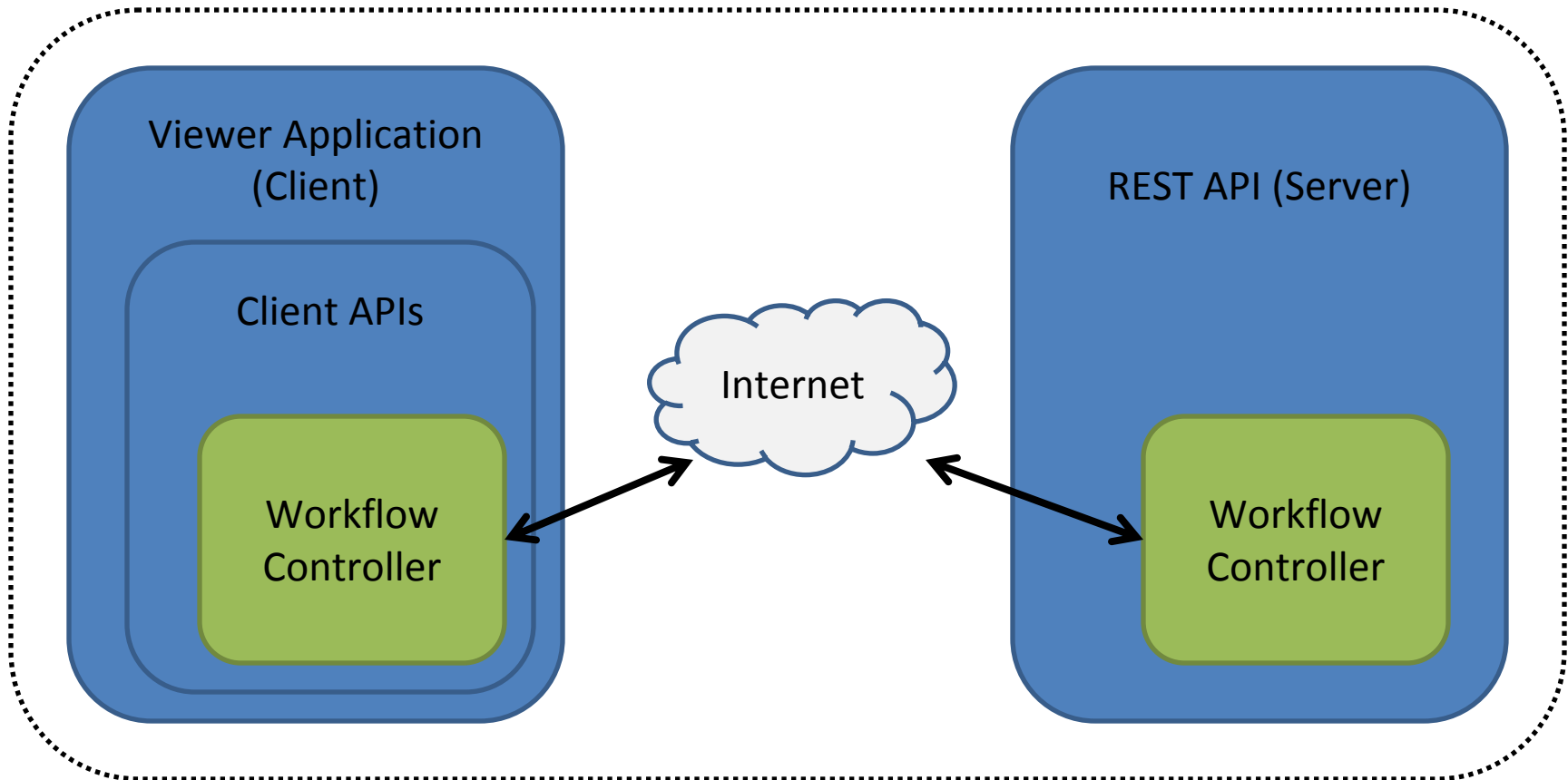
Smartphones / Tablets (e.g., iPad)

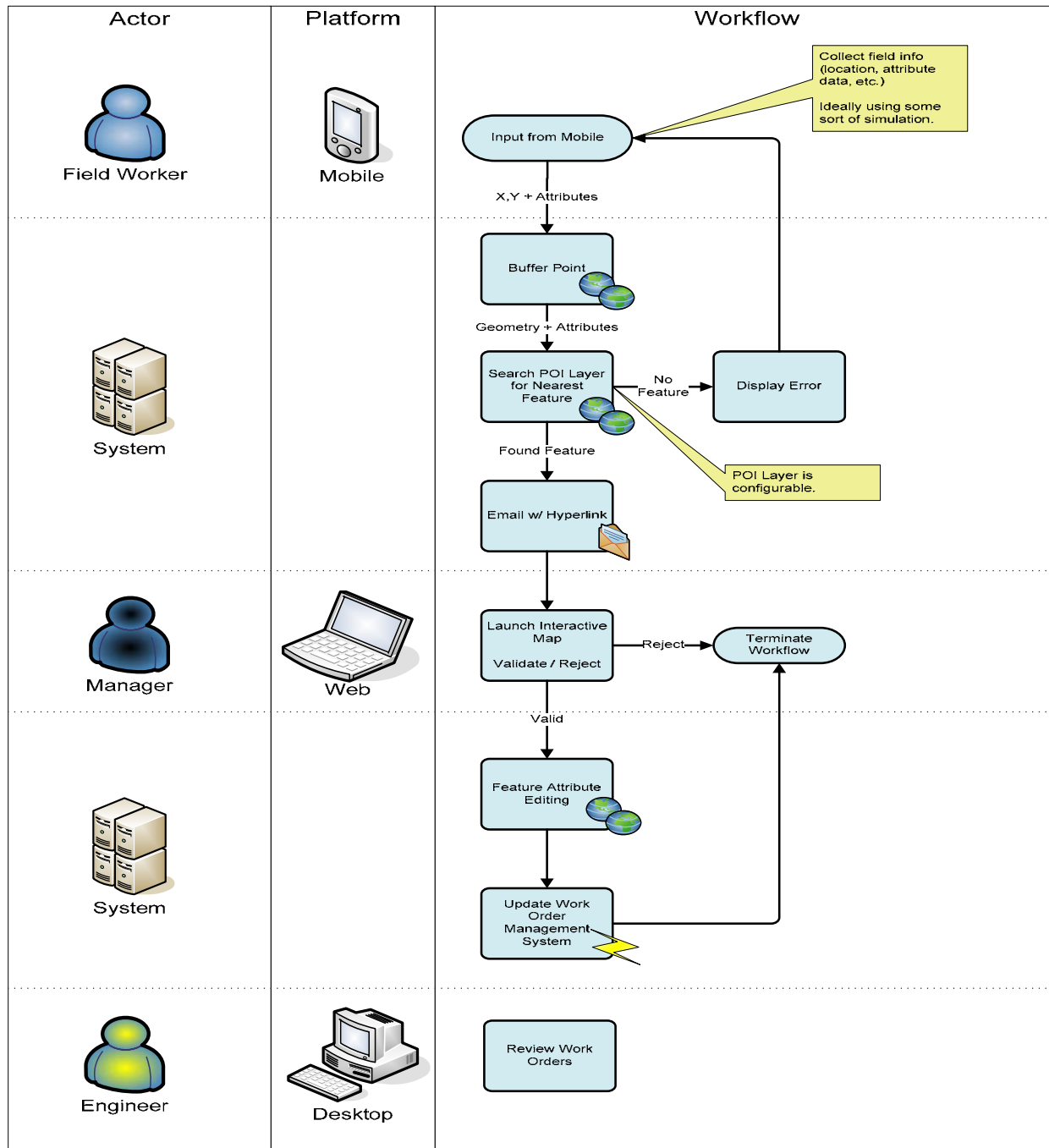
Workflow Engine

- WF4
- Out of the box activities
 - Microsoft Activities
 - Generic Activities
 - Essentials Activities
 - Esri Activities
 - GIS Activities
- Client – Server communication



Workflow in Essentials





Geocortex Workflow

Benefits

Improved Efficiency – eliminate manual steps for users
– shortens development time for new functionality

Better process control

Enable sophisticated functionality in simple applications

Business Process Improvement

Share / Reuse workflows in other applications

Easily updated

Cross Platform - Silverlight, Flex, Mobile, Future Technology (HTML5)



Geocortex® | by Latitude Geographics®

Demonstration

Scott Stafford-Veale
August 31, 2011

www.geocortex.com

Summary

- Web GIS applications are evolving
- Think about your organization's apps:
 - Can your organization benefit from the efficiency that Workflow brings?
 - Are there ways to make users (internal and external) more productive?
 - Can you serve your users more efficiently
- Workflow avoids 'Button Wars'





Geocortex® | by Latitude Geographics®

Thank You!

ssv@latitudegeo.com

Scott Stafford-Veale
October 25, 2011

www.geocortex.com

Workflows

- Enable sophisticated GIS functionality
- Target the needs of your users exactly
- Are EASY TO USE

Case Study: Mailing Label Report

- **Situation:** A rezoning application has been submitted at a particular address. Notify the neighbours so that they may submit feedback.
- **Task:**
 - Search for an address (Geocode)
 - Find all parcels which are within 1000ft (Buffer, Spatial Intersection)
 - Generate a Mailing Label Report for the discovered parcels (Reporting)

Benefits

- Automating processes with Workflows saves time (e.g., 3 days VS 3 weeks)
- Workflows can be shared and reused in other applications
- Self-Documenting
- Workflows can be easily updated to accommodate changing requirements (without redeploying applications)
- Pre-built activities reduce QA and testing

Workflows Are Cross-Platform

- Build a workflow once
 - Use it in your internal web maps
 - Run it in your mobile applications
 - Reuse it in a future technology

We Can Build Entire Applications Based on Workflows

1. Capture (document) the requirements of your users
2. Break down their interactions into a series of steps
3. Provide a workflows (2, 3, 10) that accommodate their business needs
4. Refine the workflows to match changing requirements
5. Repeat Steps 1-4 as necessary