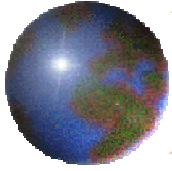


CIP

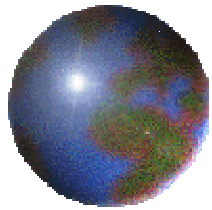
Capital Improvement Planning



The Beginning of CIP

State Capital Improvement Planning Act: 1992
(House Bill 2375)

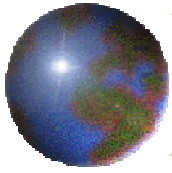
- "There is hereby created a Long-Range Capital Planning Commission to advise & assist the Legislature in providing for capital facilities in this state."



GeoCIP[©]

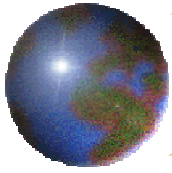


Geographic Information Systems (Geo)
&
Capital Improvement Planning (CIP)



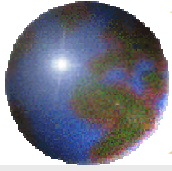
What is GeoCIP®

GeoCIP® is an ODOC application of GIS to local capital improvement planning. It is a standardized process for creating a GIS based inventory of community & county assets to be used in evaluating asset conditions, setting assets improvement priorities & updating community & county capital budgets.



GeoCIP© Toolkit

- Foundation of standardized data collection
- Assets mapped & data collected on paper in the field
- Maps & data digitized at COGs (turn data on paper into digital data on computer)
- Possible Layers
 - Buildings & Facilities
 - Police
 - Fire
 - Hospital
 - Library
 - Airport
 - Parks
 - Recreational Areas
 - Streets
 - Bridges
 - Street Lighting
 - Traffic Control
 - Equipment & Rolling Stock
 - Water
 - Sewer
 - Gas
 - Electric
 - Solid Waste
 - Storm Drainage



Street Inventory

General

Community

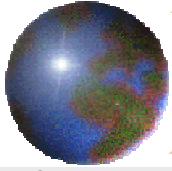
Page of

Date

Surveyor

Segments

| Line # | Street Segment ID# | Street Name | Street Length (ft) | Street Width (ft) | Class | Type | Right of Way Width (ft) | Condition | Comment | Remaining Useful Life | Cost to Improve or Replace | Surveyor | LPAC Priority |
|--------|--------------------|--------------|--------------------|-------------------|-------|------|-------------------------|-----------|-------------------------------|-----------------------|----------------------------|----------|---------------|
| 1 | Str1 | Rainbow Cove | 2,000 | 20 | R | A | 30 | P | Oil & Chip | 5 | \$117,200 | M | M |
| 2 | Str2 | Whiskey | 3,250 | 20 | R | A | 30 | P | Oil & Chip | 5 | \$190,450 | M | M |
| 3 | Str3 | Morrow | 500 | 18 | R | A | 30 | P | Requires patching of potholes | 2 | \$29,300 | M | M |
| 4 | Str4 | Chigger | 750 | 15 | R | A | 30 | P | Oil & Chip | 5 | \$43,950 | M | M |
| 5 | Str5 | Bumble Bee | 500 | 15 | R | A | 30 | P | Oil & Chip | 5 | \$29,300 | M | M |
| 6 | Str6 | Morrow Drive | 1,500 | 15 | R | A | 30 | P | Oil & Chip | 5 | \$87,900 | M | M |
| 7 | Str7 | Labrisa | 250 | 15 | R | G | 30 | P | Oil & Chip | 10 | \$14,650 | M | M |
| 8 | Str8 | Church | 500 | 20 | R | A | 30 | P | Oil & Chip | 5 | \$29,300 | M | M |
| 9 | Str9 | Magnolia | 1,000 | 20 | R | A | 30 | P | Oil & Chip | 5 | \$58,600 | M | M |
| 10 | Str10 | Maple | 250 | 15 | R | A | 30 | P | Oil & Chip | 5 | \$14,650 | M | M |
| 11 | Str11 | Lakeview | 1,000 | 18 | R | A | 30 | P | Oil & Chip | 5 | \$58,600 | M | M |
| 12 | Str12 | Broadway | 1,000 | 20 | R | A | 30 | P | Oil & Chip | 5 | \$58,600 | M | M |
| 13 | Str13 | Court | 1,250 | 20 | R | A | 30 | P | Requires patching of potholes | 5 | \$73,250 | M | M |
| 14 | Str14 | Osage | 1,500 | 20 | R | A | 30 | P | Oil & Chip | 5 | \$87,900 | M | M |
| 15 | Str15 | Cherokee | 1,500 | 25 | A | A | 30 | P | Oil & Chip | 5 | \$87,900 | M | M |
| 16 | Str16 | John Dahl | 750 | 20 | R | A | 30 | P | Oil & Chip | 5 | \$43,950 | M | M |
| 17 | Str17 | Vinita | 250 | 20 | R | A | 30 | P | Oil & Chip | 5 | \$14,650 | M | M |
| 18 | Str18 | No Name | 750 | 10 | R | G | 30 | R | Requires resurfacing | 3 | \$43,950 | M | M |
| 19 | Str19 | Wildman | 250 | 15 | R | A | 30 | R | Requires resurfacing | 0 | \$14,650 | M | M |
| 20 | Str20 | Tusla | 500 | 10 | R | A | 30 | R | Requires resurfacing | 0 | \$29,300 | M | M |
| 21 | Str21 | Grand | 2,000 | 20 | R | A | 30 | P | Requires patching of potholes | 3 | \$117,200 | M | M |
| 22 | Str22 | Cheyenne | 1,750 | 20 | R | A | 30 | P | Oil & Chip | 5 | \$102,550 | M | M |
| 23 | Str23 | Paynee | 2,000 | 25 | R | A | 30 | P | Oil & Chip | 5 | \$117,200 | M | M |
| 24 | Str24 | Quapaw | 1,000 | 20 | R | A | 30 | P | Oil & Chip | 5 | \$58,600 | M | M |
| 25 | Str25 | Seminole | 1,000 | 20 | R | A | 30 | P | Oil & Chip | 5 | \$58,600 | M | M |
| Totals | | | 27000 | | | | | | | | \$1,582,200 | | |



Water System Line Inventory

General

Community

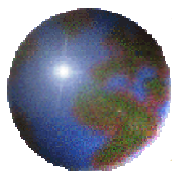
Page of

Date

Surveyor

Segments

| Line # | Segment ID # | Length (ft) | Size (in) | Type | Class | # of Meters | # of Valves | # of Fire Hydrants | Condition | Comment | Remaining Useful Life | Cost to Improve or Replace | Surveyor | LPAC Priority |
|--------|--------------|-------------|-----------|------|-------|-------------|-------------|--------------------|-----------|---------------------------|-----------------------|----------------------------|----------|---------------|
| 1 | Wtr1 | 1800 | 6.00 | P | D | 3 | 2 | 2 | S | Good condition | 15 | \$12,600 | Y | Y |
| 2 | Wtr2 | 350 | 6.00 | P | D | 4 | 2 | 0 | S | Good condition | 15 | \$2,450 | Y | Y |
| 3 | Wtr3 | 3000 | 6.00 | S | D | 12 | 4 | 2 | R | Replace w / 6" PVC | 3 | \$21,000 | M | M |
| 4 | Wtr4 | 2200 | 6.00 | P | D | 20 | 2 | 2 | S | Good condition | 15 | \$15,400 | Y | Y |
| 5 | Wtr5 | 300 | 6.00 | S | D | 1 | 1 | 0 | R | Replace w / 6" PVC | 3 | \$2,100 | M | M |
| 6 | Wtr6 | 6000 | 6.00 | P | D | 3 | 4 | 1 | S | New line constructed 1996 | 25 | \$42,000 | Y | Y |
| 7 | Wtr7 | 1100 | 6.00 | P | D | 8 | 2 | 2 | S | New line constructed 1996 | 25 | \$7,700 | Y | Y |
| 8 | Wtr8 | 800 | 6.00 | P | D | 6 | 2 | 0 | S | New line constructed 1996 | 25 | \$5,600 | Y | Y |
| 9 | Wtr9 | 1800 | 6.00 | P | D | 20 | 6 | 3 | S | New line constructed 1996 | 25 | \$12,600 | Y | Y |
| 10 | Wtr10 | 2500 | 6.00 | P | D | 20 | 4 | 4 | S | New line constructed 1996 | 25 | \$17,500 | Y | Y |
| 11 | Wtr11 | 1500 | 6.00 | P | D | 10 | 2 | 2 | S | New line constructed 1996 | 25 | \$13,500 | Y | Y |
| 12 | Wtr12a | 1000 | 2.00 | S | D | 12 | 1 | 0 | R | Replace with 2" PVC | 5 | \$5,000 | M | M |
| 13 | Wtr12b | 200 | 2.00 | S | D | 2 | 0 | 0 | R | Replace with 2" PVC | 5 | \$1,000 | M | M |
| 14 | Wtr13 | 1000 | 6.00 | P | D | 25 | 2 | 2 | S | New line constructed 1996 | 25 | \$7,000 | Y | Y |
| 15 | Wtr14 | 800 | 6.00 | P | D | 10 | 2 | 1 | S | New line constructed 1996 | 25 | \$5,600 | Y | Y |
| 16 | Wtr15 | 400 | 4.00 | S | D | 6 | 2 | 1 | R | Replace w / 6" PVC | 5 | \$2,600 | M | M |
| 17 | Wtr16 | 250 | 4.00 | S | D | 6 | 1 | 0 | R | Replace w / 6" PVC | 5 | \$1,625 | M | M |
| 18 | Wtr17 | 240 | 4.00 | S | D | 4 | 0 | 1 | R | Replace w / 6" PVC | 5 | \$1,560 | M | M |
| 19 | Wtr18 | 60 | 2.00 | S | D | 8 | 0 | 0 | R | Replace with 2" PVC | 5 | \$300 | M | M |
| 20 | Wtr19 | 100 | 2.00 | P | D | 8 | 1 | 0 | S | Good condition | 15 | \$500 | Y | Y |
| 21 | Wtr20 | 100 | 2.00 | S | D | 16 | 0 | 0 | R | Replace with 2" PVC | 5 | \$500 | M | M |
| 22 | Wtr21 | 150 | 6.00 | P | D | 6 | 1 | 0 | S | Good condition | 15 | \$1,050 | Y | Y |
| 23 | Wtr22 | 500 | 4.00 | P | D | 6 | 0 | 0 | S | Good condition | 15 | \$3,250 | Y | Y |
| 24 | Wtr23a | 3200 | 6.00 | P | D | 4 | 3 | 2 | S | Good condition | 15 | \$22,400 | Y | Y |
| 25 | Wtr23b | 800 | 6.00 | P | D | 0 | 2 | 1 | S | Good condition | 15 | \$5,600 | Y | Y |
| Totals | | 30150 | | | | 220 | 46 | 26 | | | | \$210,435 | | |



Total Capital Needs Summary

General

Community

Page of

Date

Surveyor

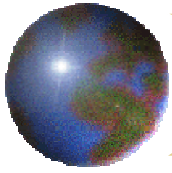
Summary

| | Technical Upgrade | Administrative Equipment | N | Outdated old computers | 5 | \$6,000 | M | M |
|--|-------------------------------------|--------------------------|---|--|----|-------------|---|---|
| | New copier | Administrative Equipment | N | Inadequate | 5 | \$4,500 | M | M |
| | New printer | Administrative Equipment | N | Old and outdated | 2 | \$1,200 | M | M |
| | Playground Equipment | Park Equipment | N | New playground equipment for park | 15 | \$18,500 | M | M |
| | Davey Hydrovone air compressor | Park Equipment | R | Old needs new compressor part | 0 | \$10,000 | M | M |
| | 2 Snapper mowers (commercial) | Park Equipment | R | Good condition | 5 | \$13,000 | M | M |
| | Fire Vehicles | Fire Equipment | R | 1977 Dodge & 1967 Kaiser need replaced | 3 | \$22,000 | E | E |
| | 15 sets bunker gear | Fire Equipment | R | Poor condition | 2 | \$15,000 | M | M |
| | 3 sets SCBA's | Fire Equipment | R | Must be replaced | 2 | \$3,900 | E | E |
| | Copy machine | Police Equipment | N | Needed for office | 10 | \$3,000 | M | M |
| | Fax machine | Police Equipment | N | Needed for office | 10 | \$1,000 | E | E |
| | 5 Relm radio's | Police Equipment | N | Old radio's need replaced | 8 | \$3,000 | M | M |
| | Z-tron UHF radio & repeater/antenna | Police Equipment | N | Needs portables to work | 5 | \$12,000 | M | M |
| | Siren | Police Equipment | N | Good condition | 10 | \$15,000 | M | M |
| | Fire Department | Fire Building | N | Poor condition need more space | 20 | \$200,000 | M | M |
| | Street replacement | Street Line | R | Streets to be repaved | 0 | \$118,876 | M | M |
| | Street repairs | Street Line | I | Streets in need of repair | 10 | \$526,302 | D | D |
| | Case 5ADD Backhoe | Street Equipment | S | Good shape | 3 | \$35,000 | M | M |
| | Massey-Fergusson 135 Tractor | Street Equipment | R | Worn out, barely runs | 1 | \$15,000 | M | M |
| | Gas system | Gas Line | R | Needs new anode beds | 5 | \$168,611 | M | M |
| | 1989 Chevy 1 ton | Gas Equipment | S | Runs good | 3 | \$20,000 | M | M |
| | Sewer Line replacement | Sewer Line | R | Lines which need replaced | 0 | \$143,500 | M | M |
| | Sewer Line repair | Sewer Line | R | Lines in need of repair | 8 | \$154,500 | E | E |
| | 1994 Chevy S10 | Sewer Equipment | R | Runs good | 4 | \$15,000 | M | M |
| | Water Line replacement | Water Lines | R | Lines which need replaced | 1 | \$503,230 | M | M |
| | Totals | | | | | \$2,028,119 | | |



PROJECT LIST

| | | | |
|-----------|-----------------------------|-----------|---------------------------------|
| 1999-2004 | Technical Upgrade | \$6,000 | General Budget |
| 1999-2003 | Copier & Fax Machine | \$5,700 | General Budget |
| 1999-2004 | Playground Equipment | \$18,500 | REAP, General Budget |
| 1999-2002 | Cemetery Equipment | \$23,000 | General Budget |
| 1999-2004 | Fire Vehicles | \$22,000 | REAP, General Budget, Agric. |
| 1999-2004 | Fire Department Equipment | \$18,900 | REAP, Agric. |
| 1999-2004 | Police Department Equipment | \$34,000 | General Budget, REAP |
| 2000-2003 | Fire Department | \$200,000 | CDBG, REAP, Donations, Agric. |
| 1999-2002 | Street Resurfacing | \$118,876 | CDBG, REAP |
| 1999-2003 | Street Equipment | \$50,000 | REAP, General Budget |
| 1999-2010 | Gas System | \$168,611 | CDBG, REAP, Dept. of Energy |
| 1999-2004 | Sewer Line replacement | \$143,500 | CDBG, OWRB, General Budget |
| 1999-2006 | Sewer Line repair | \$154,500 | CDBG, OWRB, FHA, General Budget |
| Ongoing | Sewer Vehicle | \$15,000 | General Budget, REAP |
| 1999-2004 | Water Line replacement | \$503,230 | CDBG, FHA, OWRB, General Budget |
| 1999-2006 | Water Line repairs | \$548,290 | CDBG, FHA, OWRB, General Budget |
| Ongoing | Water Vehicle | \$20,000 | General Budget, REAP |
| 1999-2004 | Water Equipment | \$7,200 | REAP, General Budget |



Benefits

Comprehensive digital computer maps

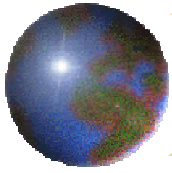
Detailed attribute information

Easily updateable maps & attributes

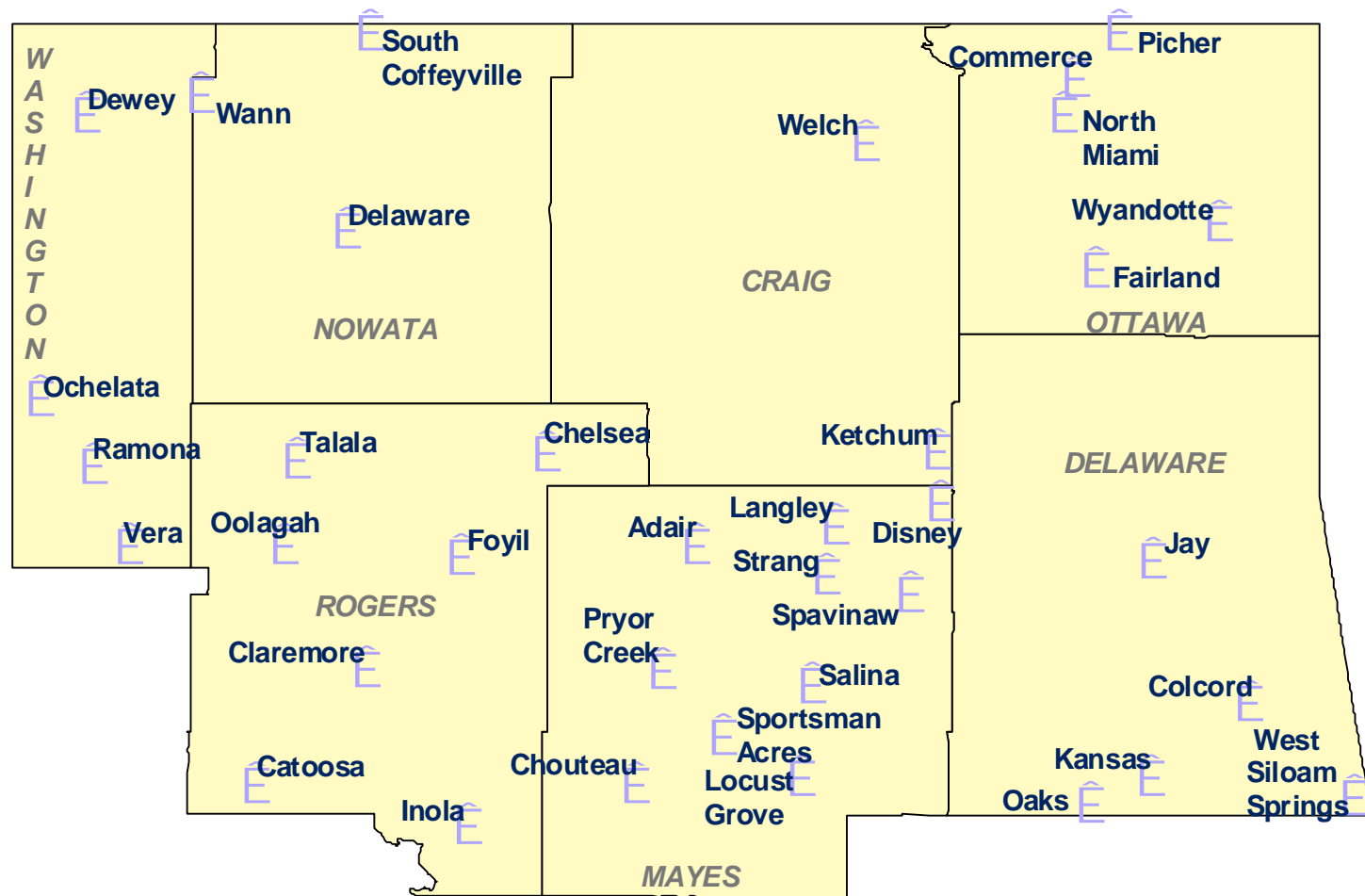
Capital Needs & Budgeting based on real data

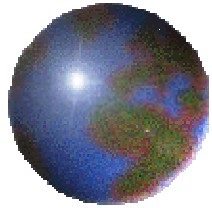
Uniform data across all CIPs

Same planning tools as larger urban communities use



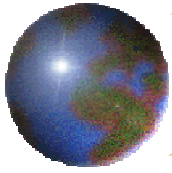
GGEDA's Service Area



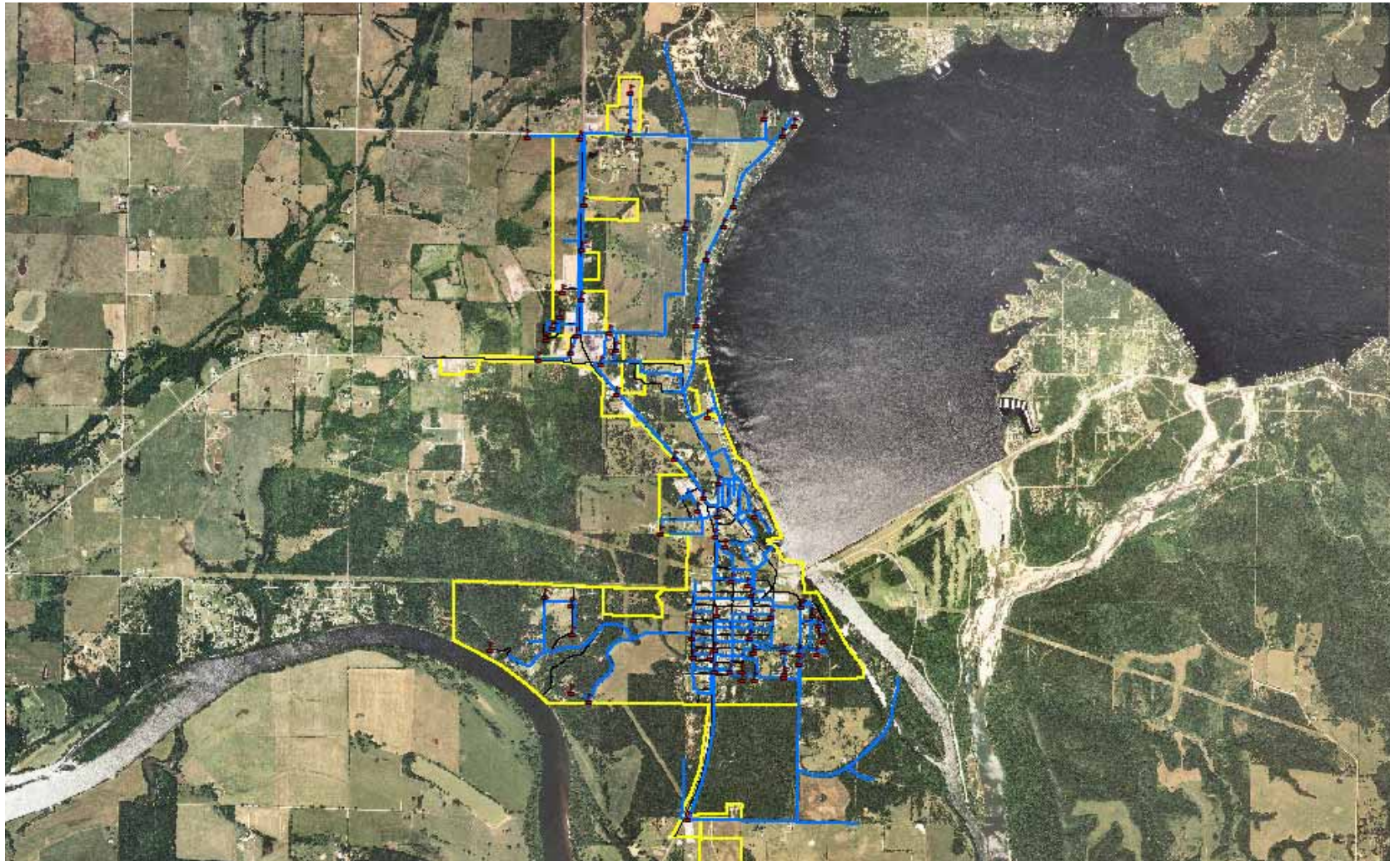


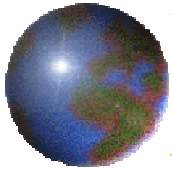
Knowledge is Power

Helping Rural Communities Empower Themselves



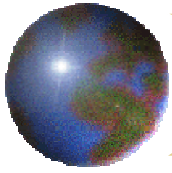
Langley



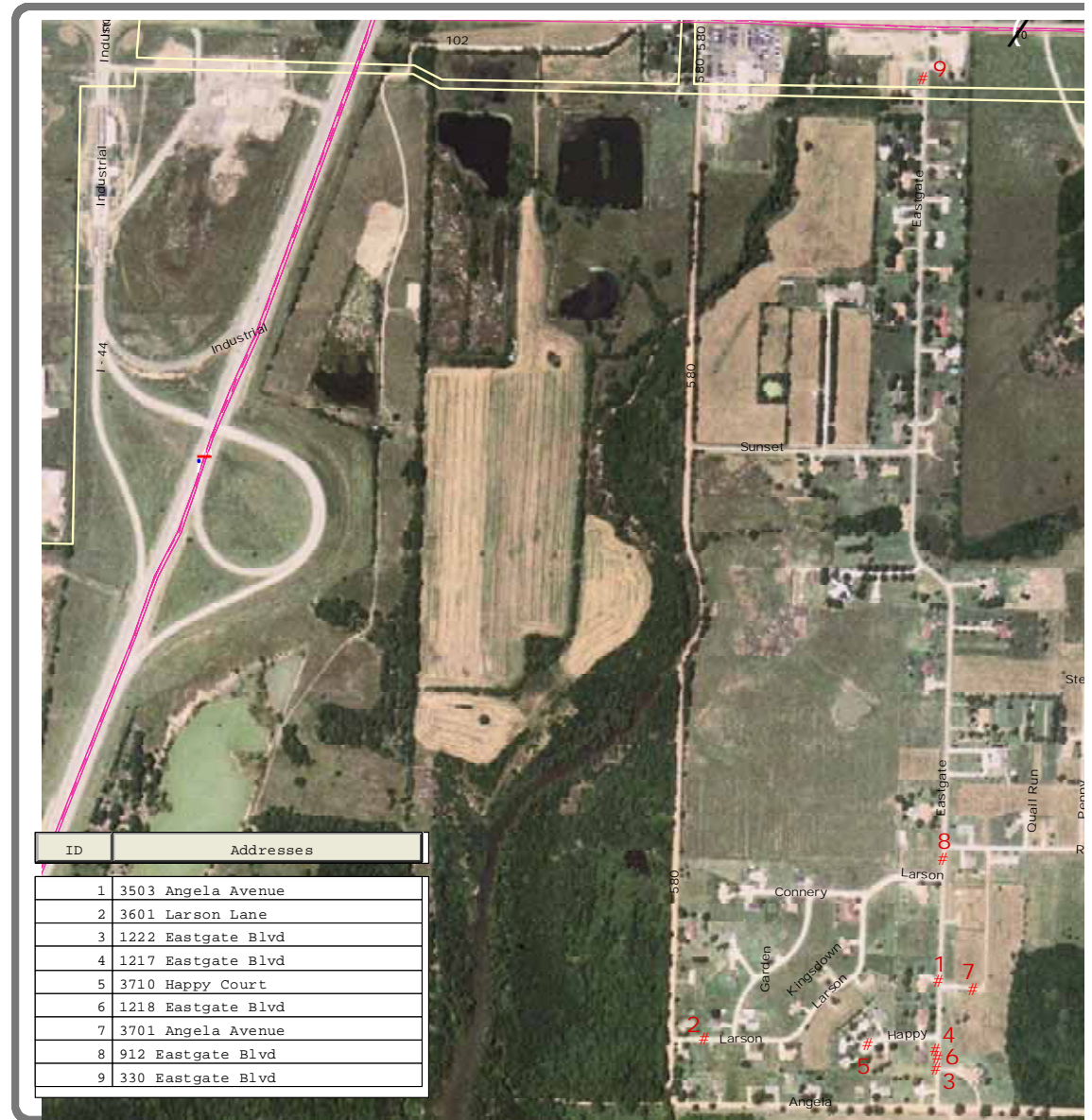


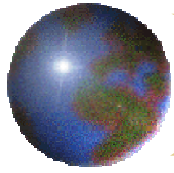
ISO Ratings





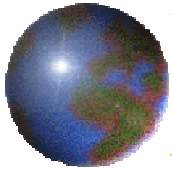
SRL Properties





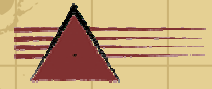
Rural Water District

Pilot Project



Miami Tribe










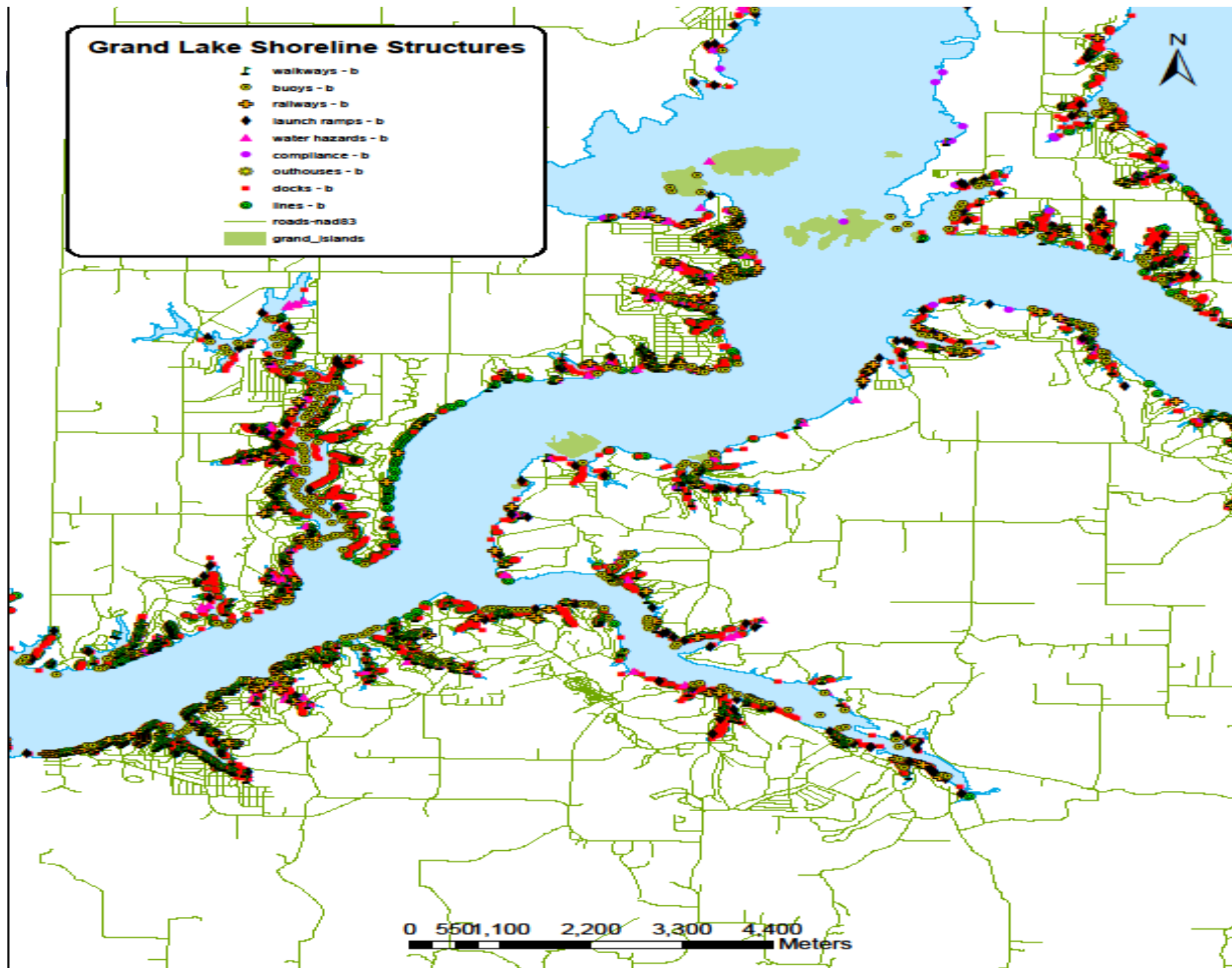
Commerce, OK

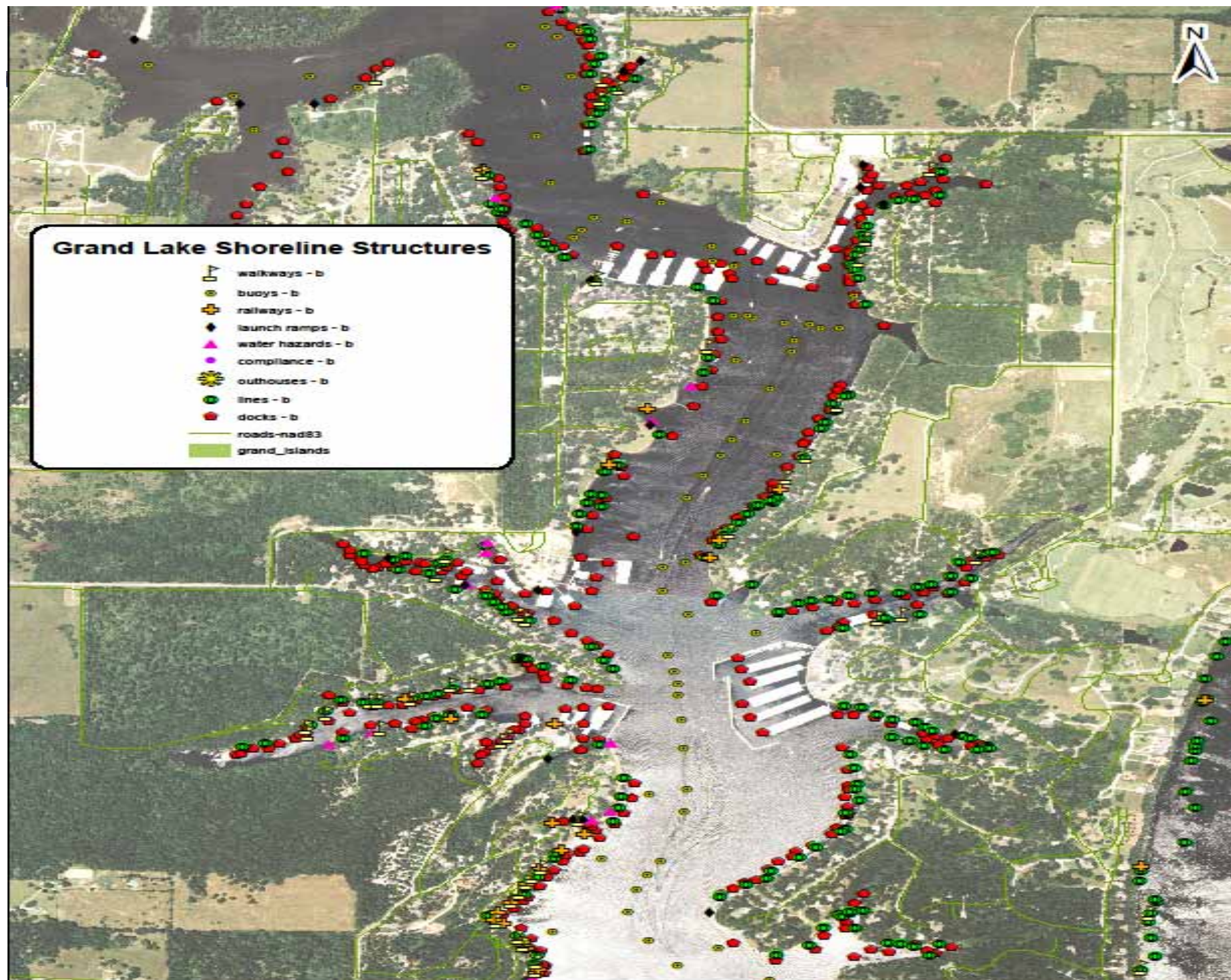
Pitcher, OK

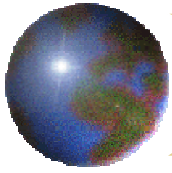


Grand Lake Shoreline Structures

-  walkways - b
-  buoys - b
-  railways - b
-  launch ramps - b
-  water hazards - b
-  compliance - b
-  outhouses - b
-  docks - b
-  lines - b
-  roads-nad83
-  grand_islands







COG's Service Area

