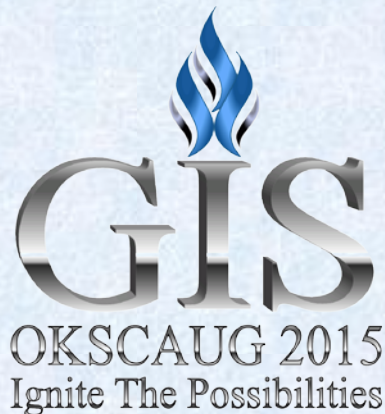


Implementation of Organizational AGO in a State Agency

Lesli Crofford & Mike Sexton

September 22, 2015





Abstract

The Oklahoma Department of Commerce started working with the public (free) version of AGO in late 2013. In early 2014, ODOC began incorporating various AGO maps into its website providing basic information on many of its programs to the public. One benefit was to significantly reduce the time staff spent answering information calls. This year, to further these efforts & leverage the existing AGO mapping, Commerce has moved to an AGO compatible platform for LocateOK, its buildings & sites application & selected a new Esri Business partner vendor for development. Today, ODOC has an organizational level AGO account that allows multiple users access to agency maps, mapping tools & data through Community Analyst.



About Commerce



The Oklahoma Department of Commerce is the primary economic development entity in the state.

Mission

To create and deliver high-impact solutions that lead to prosperous lives and communities for all Oklahomans.

Business Attraction, Creation & Retention

We recruit new businesses to the state by promoting the great assets we have for businesses to succeed. We work to foster an entrepreneurial culture and infrastructure in Oklahoma to encourage the start-up of new businesses and partner with communities to ensure existing businesses grow and prosper.

Community Development

We partner with city and county elected officials and community leaders to help raise incomes, improve the quality of life for local residents, and help local businesses to thrive. Through federal funding, we oversee vital infrastructure and human services investments that help position communities as favorable for business attraction.



Agency Divisions & Programs



Business Development

National Recruiting
Global Trade & Investment
Small & Minority Business

Community Development

Community Infrastructure
Citizen Empowerment

Regional Economic Development

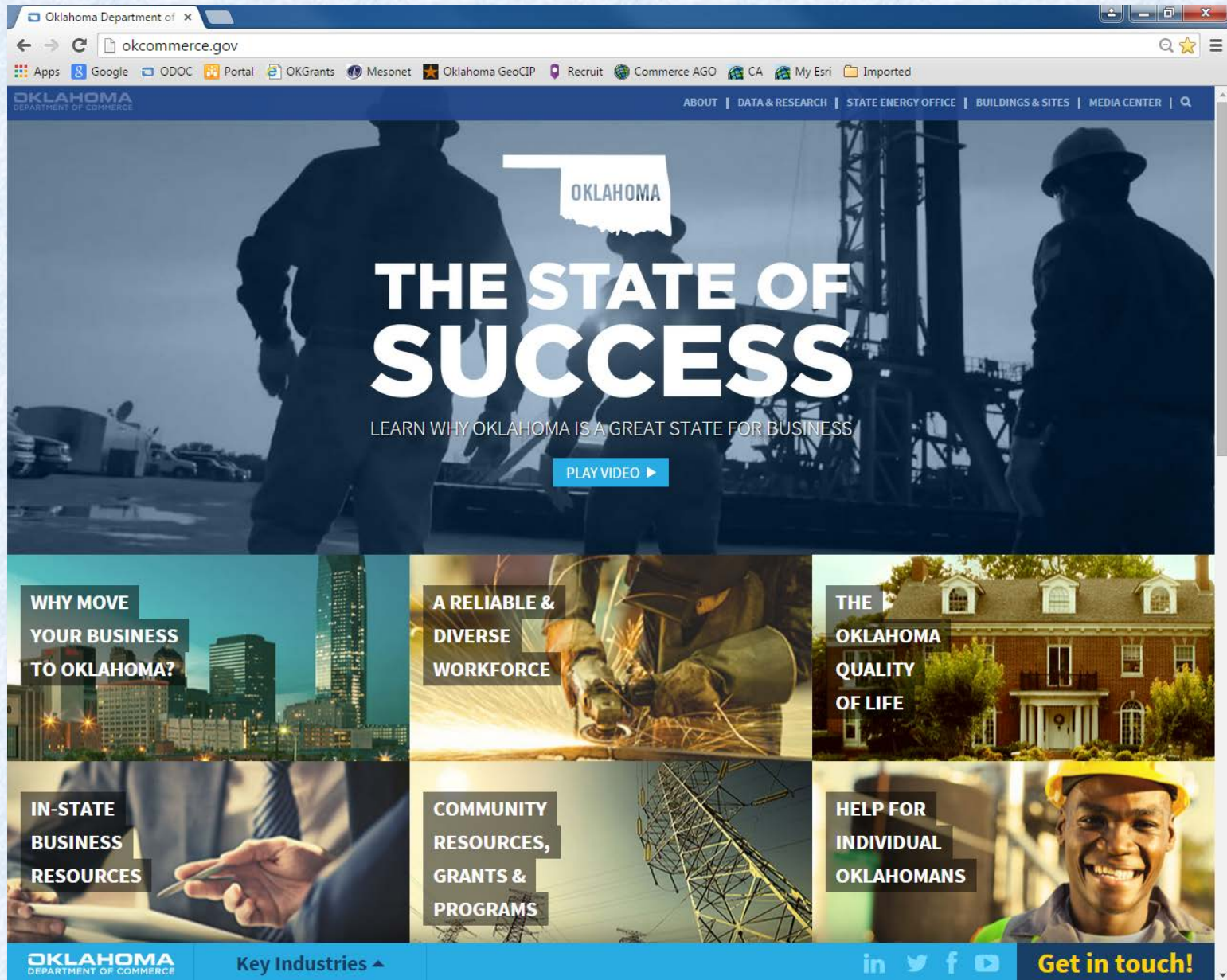
RED Specialists

Main Street

Liaisons
Architect

Research

Economic Analysis
Building & Sites



The screenshot shows the Oklahoma Department of Commerce website. The browser address bar displays "okcommerce.gov". The website header includes navigation links: ABOUT | DATA & RESEARCH | STATE ENERGY OFFICE | BUILDINGS & SITES | MEDIA CENTER. The main banner features the text "THE STATE OF SUCCESS" and "LEARN WHY OKLAHOMA IS A GREAT STATE FOR BUSINESS", with a "PLAY VIDEO" button. Below the banner are six content tiles:

- WHY MOVE YOUR BUSINESS TO OKLAHOMA?** (Image: City skyline at night)
- A RELIABLE & DIVERSE WORKFORCE** (Image: Welder working)
- THE OKLAHOMA QUALITY OF LIFE** (Image: Brick house)
- IN-STATE BUSINESS RESOURCES** (Image: Business meeting)
- COMMUNITY RESOURCES, GRANTS & PROGRAMS** (Image: Power lines)
- HELP FOR INDIVIDUAL OKLAHOMANS** (Image: Smiling worker)

The footer includes the Oklahoma Department of Commerce logo, a "Key Industries" link, social media icons (LinkedIn, Twitter, Facebook, YouTube), and a "Get in touch!" link.

←

→

↻

okcommerce.gov/data-and-research/maps/

🔍

☆

☰

Apps

Google

ODOC

Portal

OKGrants

Mesonet

Oklahoma GeoCIP

Recruit

Commerce AGO

CA

My Esri

Imported

Employers

Demographics

Economic Data

Workforce Data

Maps

Local: 405-815-6552

Toll Free: 800-879-6552

Get in touch!

Learn why Oklahoma is the State of Success.

Play Now. ▶

Search available properties in Oklahoma.

Buildings and Sites

Home / Data & Research /

Maps

5% AREAS

Most businesses that qualify for the [Quality Jobs Program](#) receive payments in the range of 4% of new payroll. In certain counties designated as economically challenged, a 5% net benefit rate automatically applies. This percentage fluctuates by the average weighted salary of the new jobs.

Launch Map

OPPORTUNITY ZONES

[Quality Jobs Program](#) minimum wage requirements do not apply to Opportunity Zones.

Launch Map

ENTERPRISE ZONES

The [Investment/New Jobs Tax Credit Package](#) doubles in Enterprise Zones.

Launch Map

SMALL EMPLOYER QUALITY JOBS WAGE THRESHOLD MAP

Certain counties qualify for the [Small Employer Quality Jobs](#) lower 100% wage threshold as an additional incentive.

Launch Map

AMERICAN INDIAN LANDS TAX CREDIT

Two-thirds of Oklahoma, because of its unique Native American heritage, qualifies for special federal tax treatment. Businesses locating or expanding in these areas benefit by accelerated depreciation of investment and by employment tax credits when employing tribal members or their spouses.

Launch Map

TARGETED EMPLOYMENT AREAS (TEAS) FOR EB-5 IMMIGRANT INVESTOR PROGRAM

EB-5 is a visa program created in 1990 under the Immigration Act for foreign investors. Administered by the U.S. Citizenship and Immigration Services (USCIS), the program provides a method of obtaining a visa for foreign nationals who invest in the United States. See [Oklahoma's program information](#) for additional details.

Launch Map

OKLAHOMA

DEPARTMENT OF COMMERCE

Menu ▲

Key Industries ▲

in

🐦

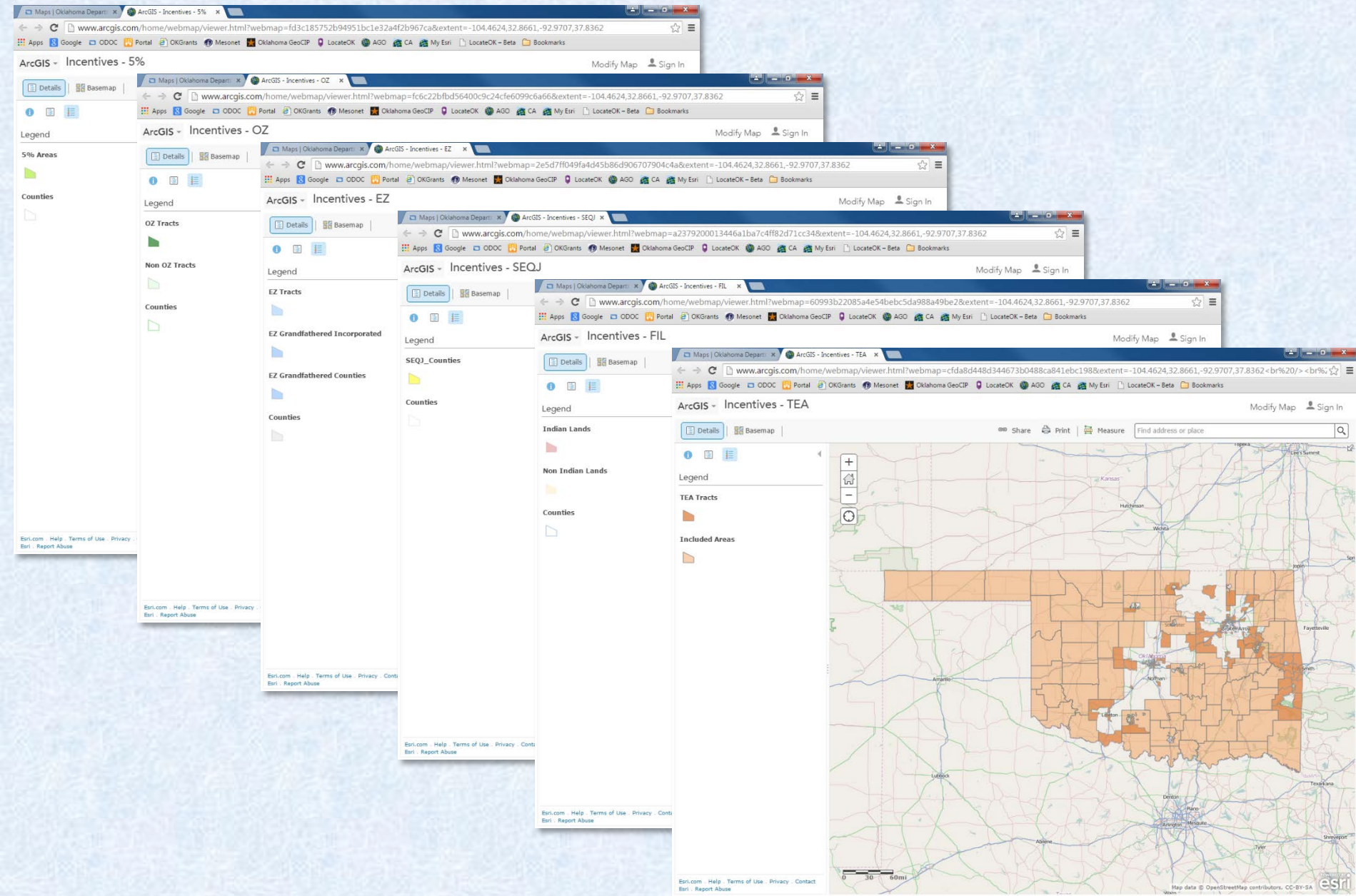
f

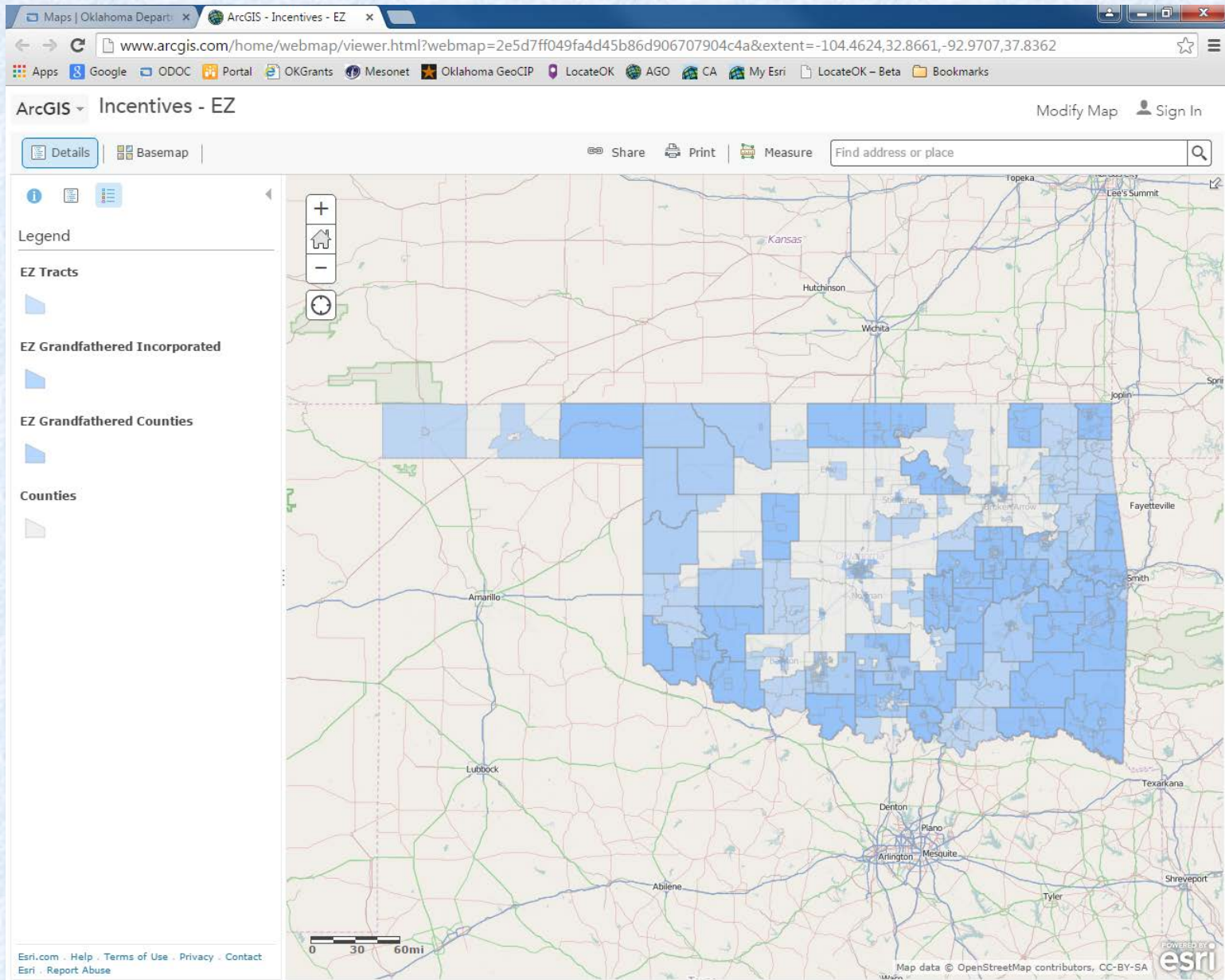
📺

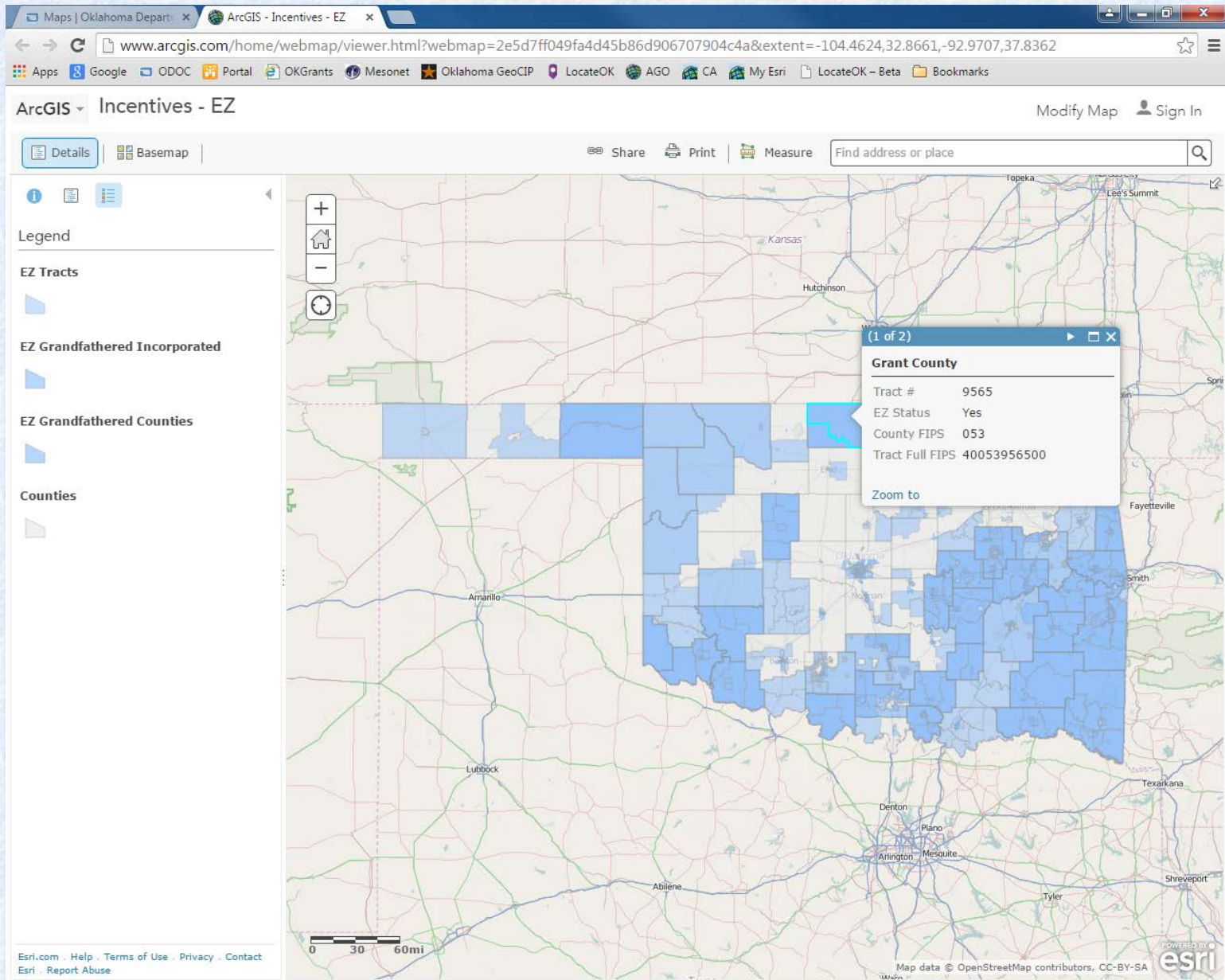
Get in touch!



Tax Incentives AGO Maps



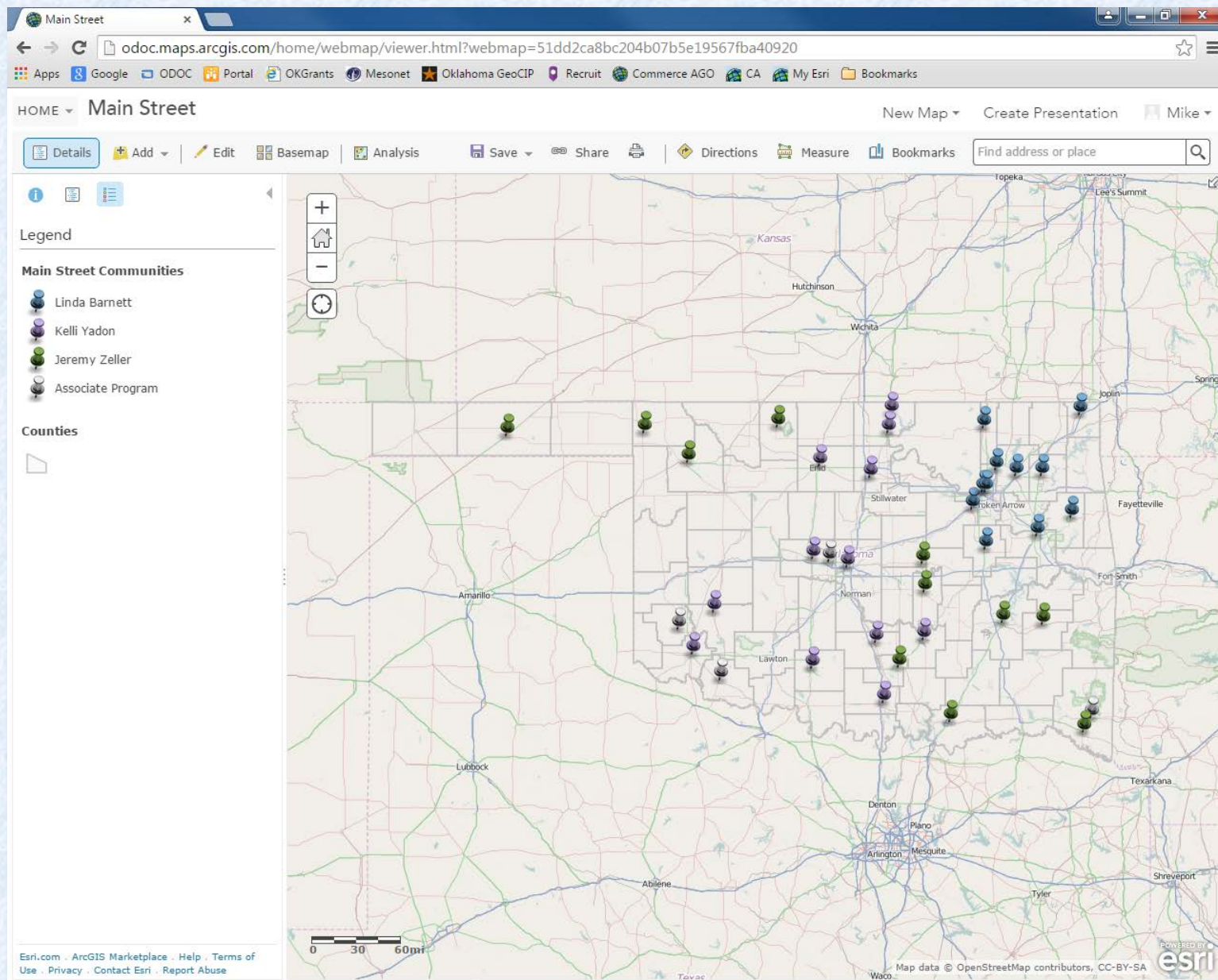






Oklahoma Main Street Program





Main Street Guymon | Gu
www.mainstreetguymon.com

Apps Google ODOC Portal OKGrants Mesonet Oklahoma GeoCIP LocateOK AGO CA My Esri LocateOK - Beta Bookmarks

Home About Contact On The Bricks Membership Agendas & Minutes Directory Calendar Photo Galleries

Building Relationships ... One Handshake at a Time

Search

Follow MSG

f

On The Bricks Column

> October 27, 2014
> October 24, 2014
> October 13, 2014
> October 6, 2014
> September 25, 2014
> September 23, 2014

On The Bricks Archives

On The Bricks Archives
Select Month

Welcome To Main Street Guymon

Downtown Guymon is a clean, rejuvenated, friendly hometown that is the heart of the Panhandle with a variety of unique shops and art and cultural oriented activities, in historic buildings that encourage anyone passing through to spend some time here. It is also a place that our residents are proud of.

Learn more

Historic Downtown Comes Alive!

Epic Saturdays, a full calendar of fun community events, is a team effort between Epic PCS and Main Street Guymon and includes a wide range of happenings from athletic and active to educational and entertaining.

"It's happening all year long on Main Street in Guymon. Epic PCS is pleased to be the sponsor of Epic Saturdays that offers something for everyone whether it's for a visit, work or play. Because of Epic Saturdays, there is always something to do in Guymon," said Mike Shannon, economic development director for Epic Touch and Epic PCS and vice chairman of Main Street Guymon board of directors.

Events like 5K runs, scrapbooking, book clubs, a women's ag conference, historical



Available Buildings & Industrial Sites

Community Profiles

Labor Force

Demographics

Consumer Spending

Wage Data

Businesses by Location

Supply Chains

Lists of Companies by Location & Defined Details

Additional Site Layers

Airports

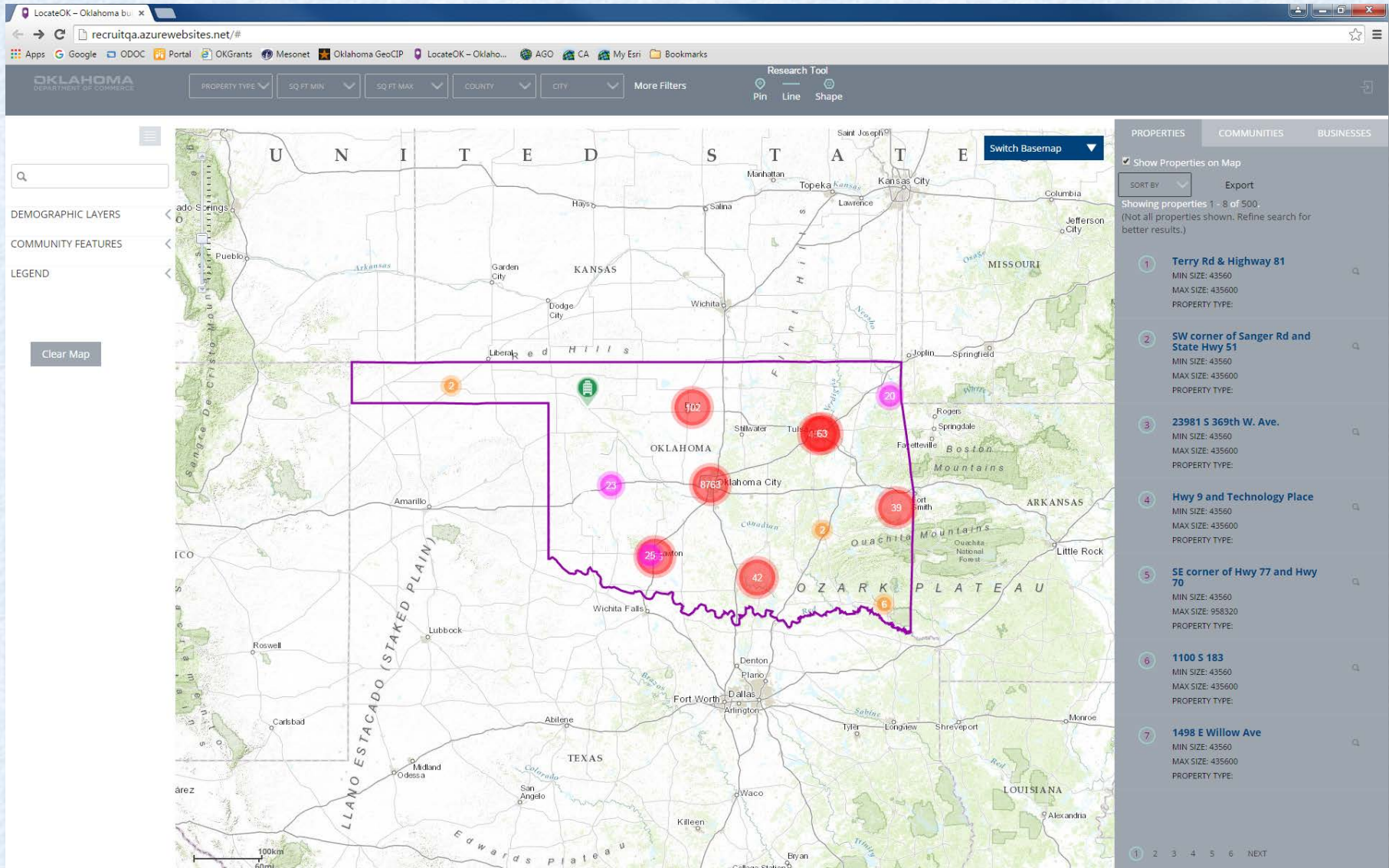
Ports

Interstates

Rail

Incentives Maps

Military Bases



LocateOK - Oklahoma bu x

recruitqa.azurewebsites.net/#

Apps Google ODOC Portal OKGrants Mesonet Oklahoma GeoCIP LocateOK - Oklaho... AGO CA My Esri Bookmarks

OKLAHOMA
DEPARTMENT OF COMMERCE

PROPERTY TYPE SQ FT MIN SQ FT MAX COUNTY CITY More Filters

Research Tool
Pin Line Shape

Switch Basemap

Q

DEMOGRAPHIC LAYERS

COMMUNITY FEATURES

Airports

Indian Lands

Counties

Hospitals

Rail Service

Interstates/Highways

College

Military Bases

5 Pct Areas

OZ Areas

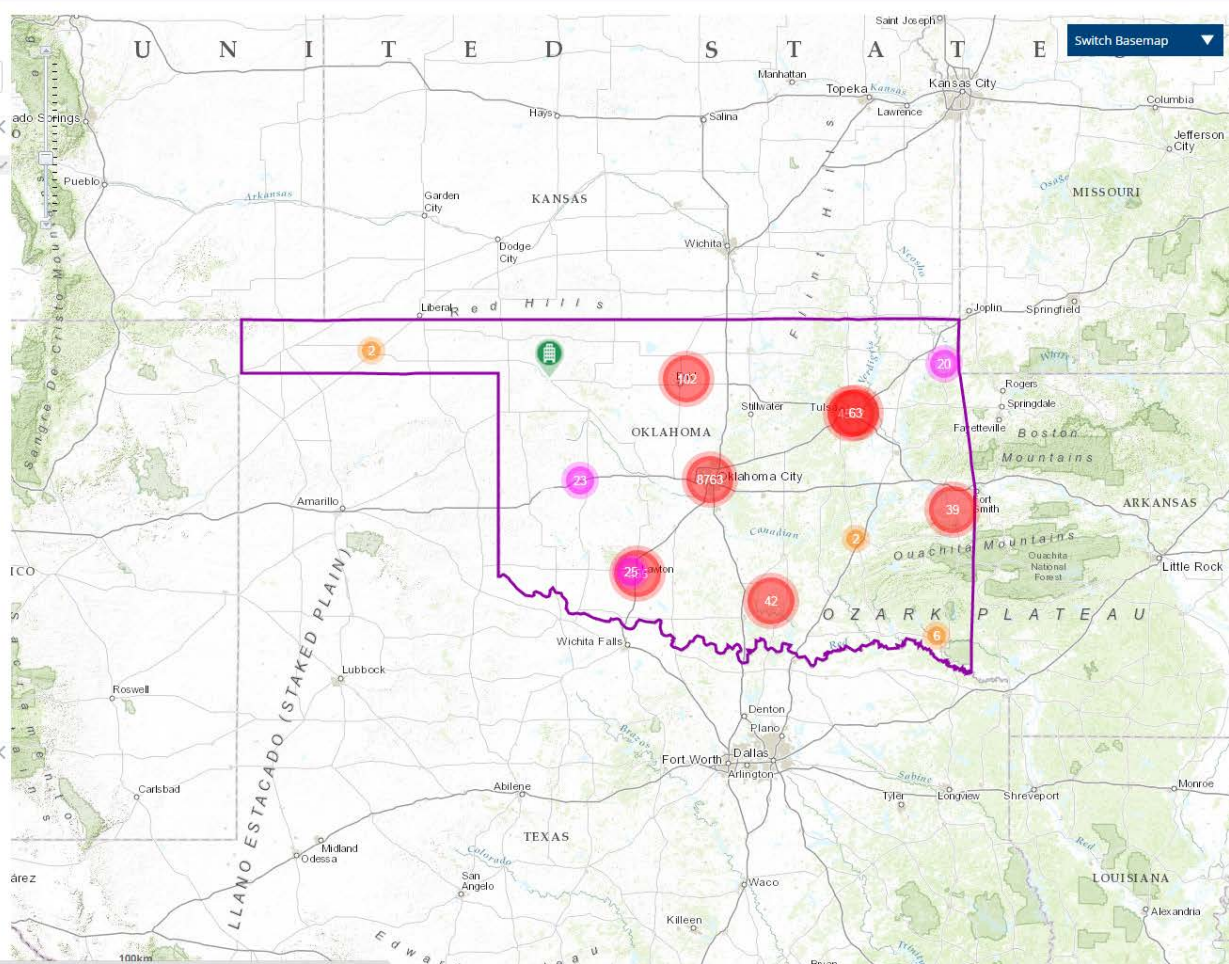
EZ Areas

SEQJ

TEA Rural Areas

LEGEND

Clear Map



PROPERTIES COMMUNITIES BUSINESSES

☒ Show Properties on Map

SORT BY

Export

Showing properties 1 - 8 of 500.
(Not all properties shown. Refine search for better results.)

1

Terry Rd & Highway 81

MIN SIZE: 43560
MAX SIZE: 435600
PROPERTY TYPE:

2

SW corner of Sanger Rd and State Hwy 51

MIN SIZE: 43560
MAX SIZE: 435600
PROPERTY TYPE:

3

23981 S 369th W. Ave.

MIN SIZE: 43560
MAX SIZE: 435600
PROPERTY TYPE:

4

Hwy 9 and Technology Place

MIN SIZE: 43560
MAX SIZE: 435600
PROPERTY TYPE:

5

SE corner of Hwy 77 and Hwy 70

MIN SIZE: 43560
MAX SIZE: 958320
PROPERTY TYPE:

6

1100 S 183

MIN SIZE: 43560
MAX SIZE: 435600
PROPERTY TYPE:

7

1498 E Willow Ave

MIN SIZE: 43560
MAX SIZE: 435600
PROPERTY TYPE:

1

2

3

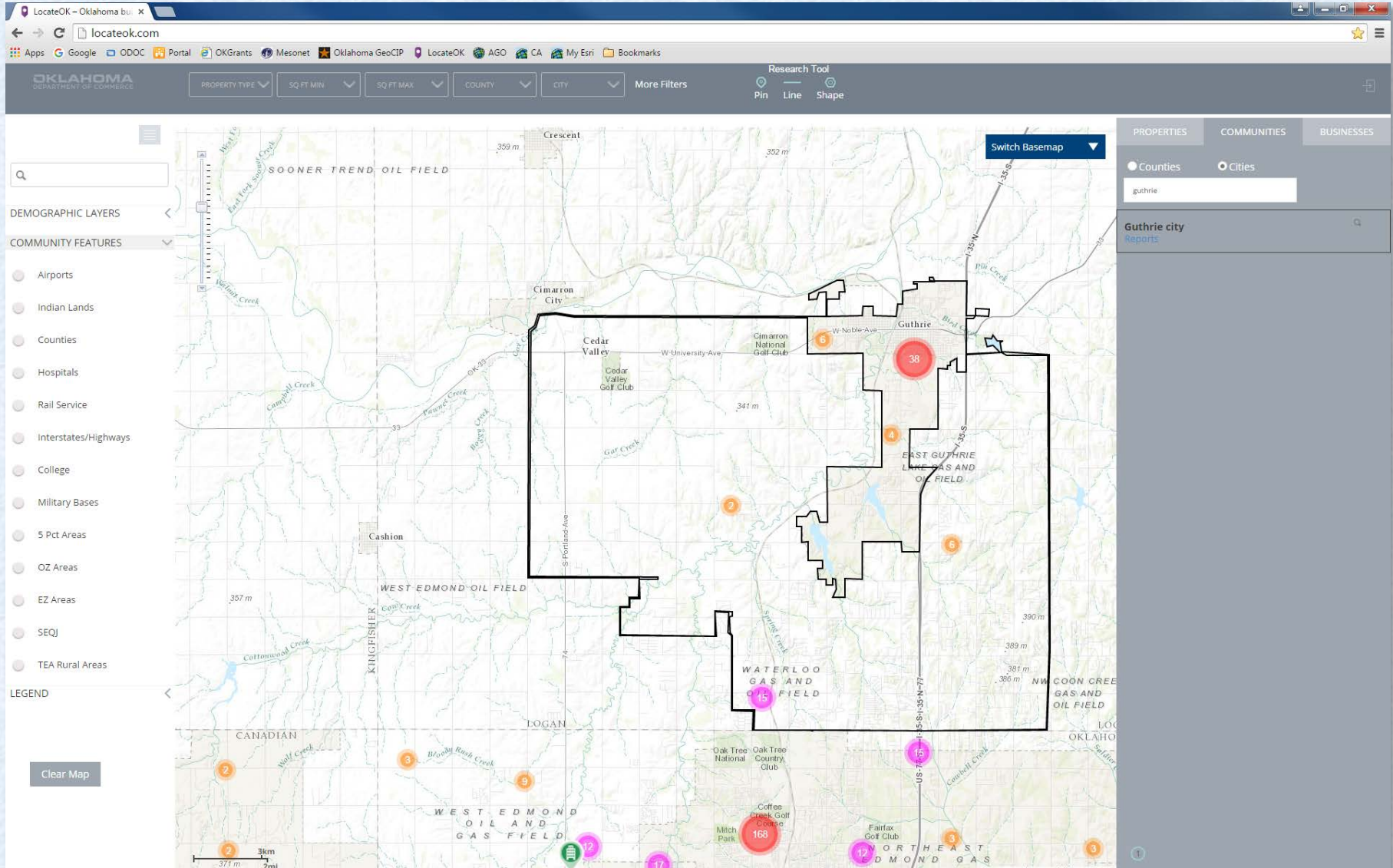
4

5

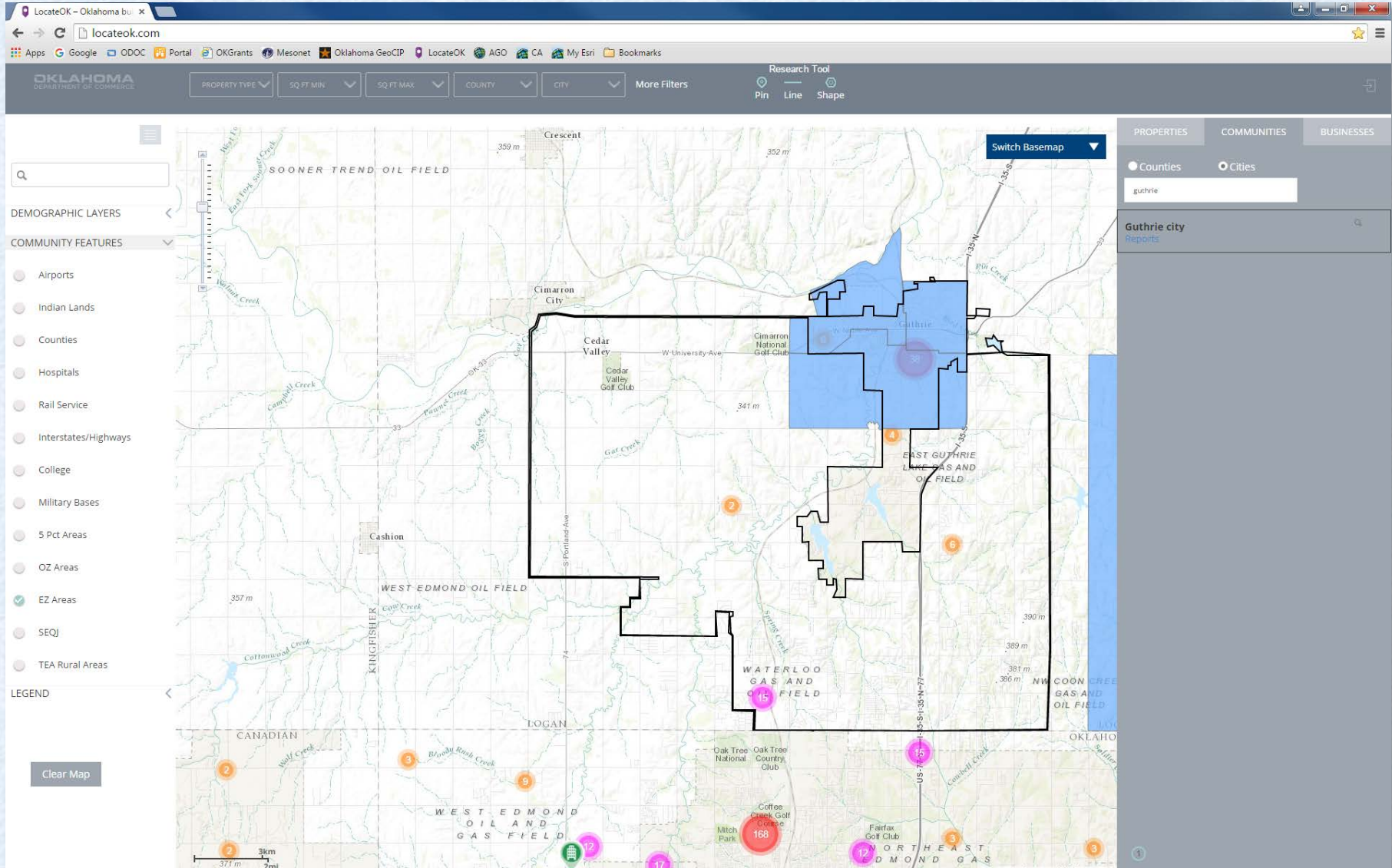
6

NEXT

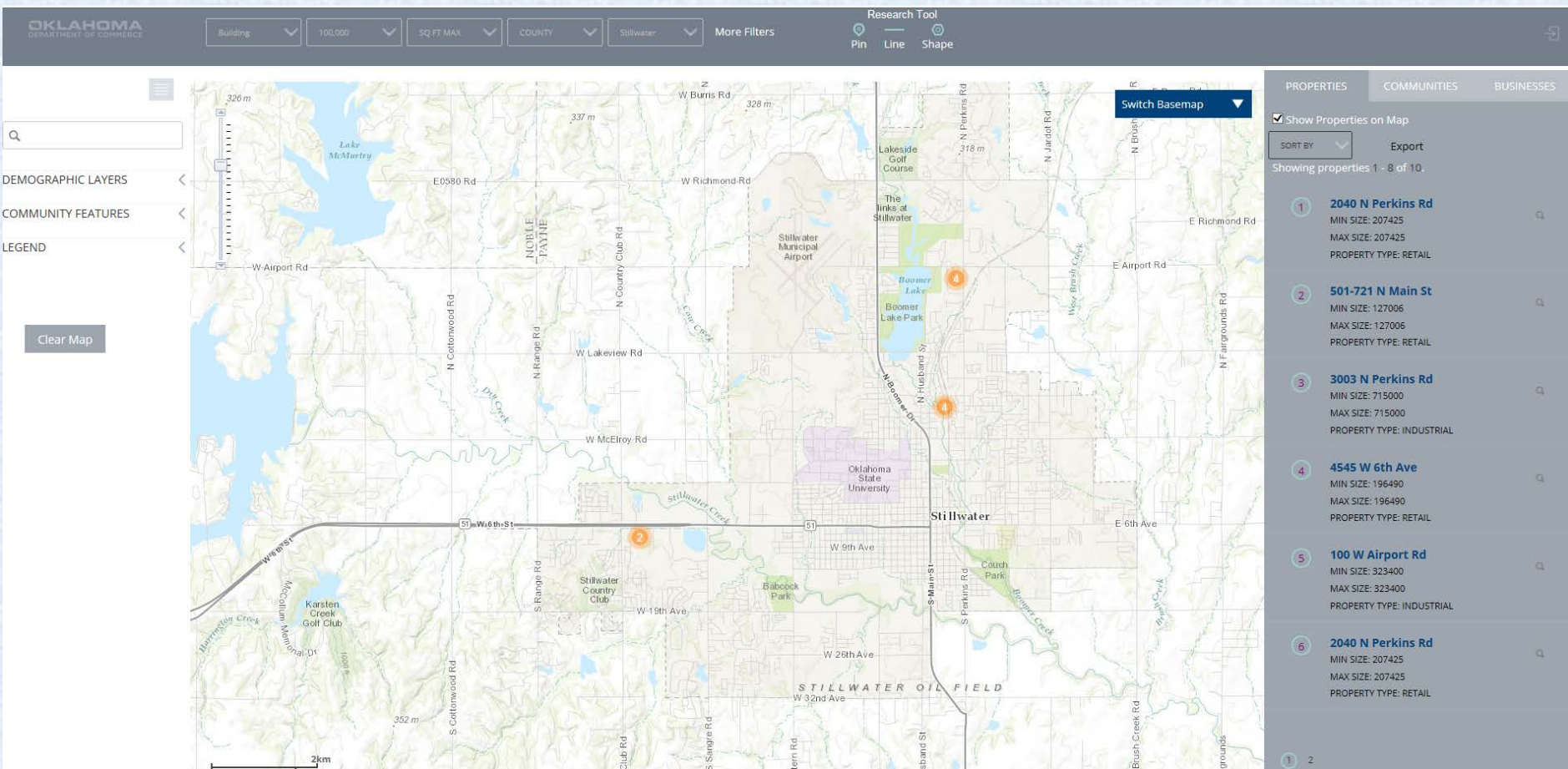
Communities



Communities



Buildings Search



Buildings Search

OKLAHOMA
DEPARTMENT OF COMMERCE

Building 100,000 SQ FT MAX COUNTY Stillwater More Filters

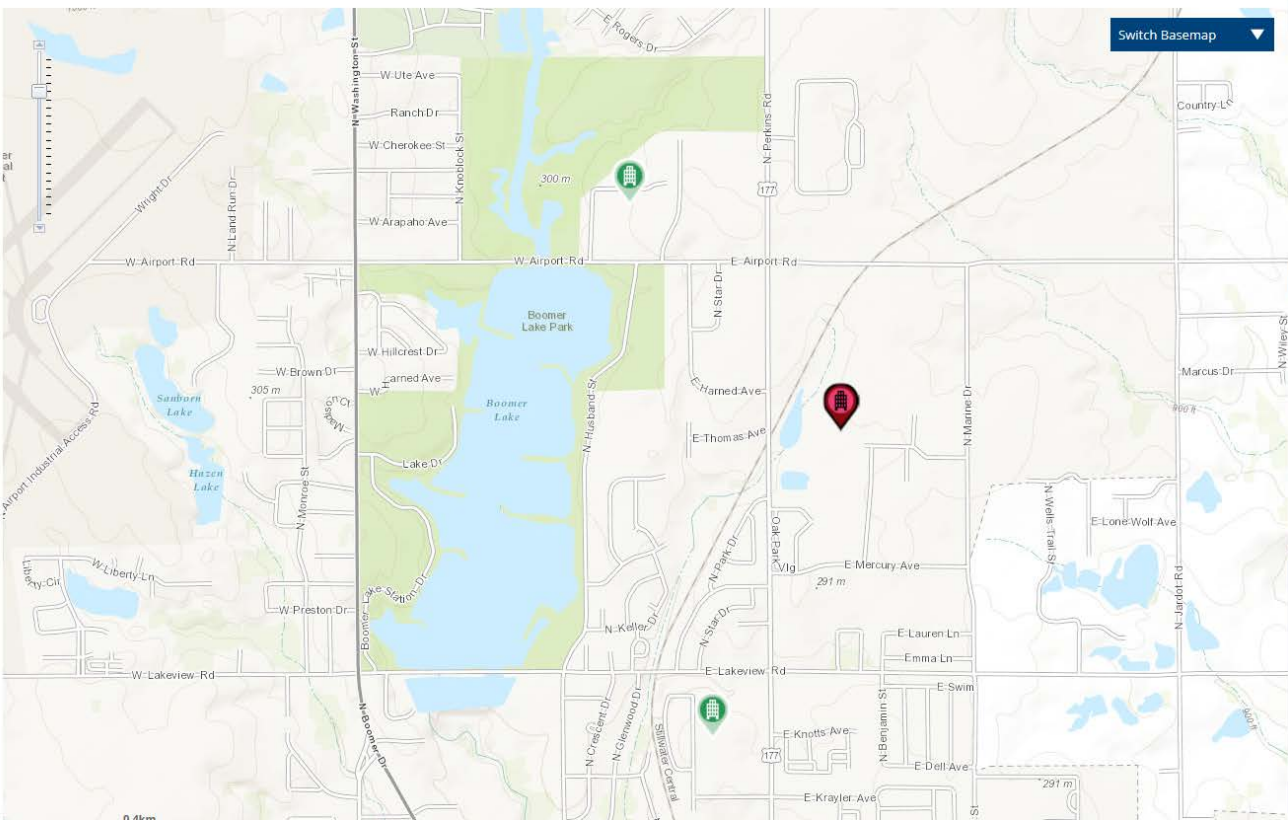
Pin Line Shape

DEMOGRAPHIC LAYERS

COMMUNITY FEATURES

LEGEND

Clear Map




Switch Basemap

PROPERTIES COMMUNITIES BUSINESSES

Back

3003 N Perkins Rd, Stillwater 74075



Zoom To Reports

COUNTY: PAYNE
MIN SIZE: 715000
MAX SIZE: 715000
YEAR BUILT: 1998
PROPERTY TYPE: INDUSTRIAL
SALE PRICE: 3
BROKER: ROBERT PIELSTICKER
BROKER ADDRESS: 1401 S BOULDER AVE SUITE 100 TULSA OK 74119
BROKER PHONE: (918) 392-7268
BROKER EMAIL: BOB.PIELSTICKER@CBRE-OK.COM

Export

Buildings Search

OKLAHOMA
DEPARTMENT OF COMMERCE

Building

100,000

SQ FT MAX

COUNTY

Stillwater

More Filters

Research Tools

Pin

Line

Shape

Q

DEMOGRAPHIC LAYERS

COMMUNITY FEATURES

LEGEND

Clear Map

Report Type:

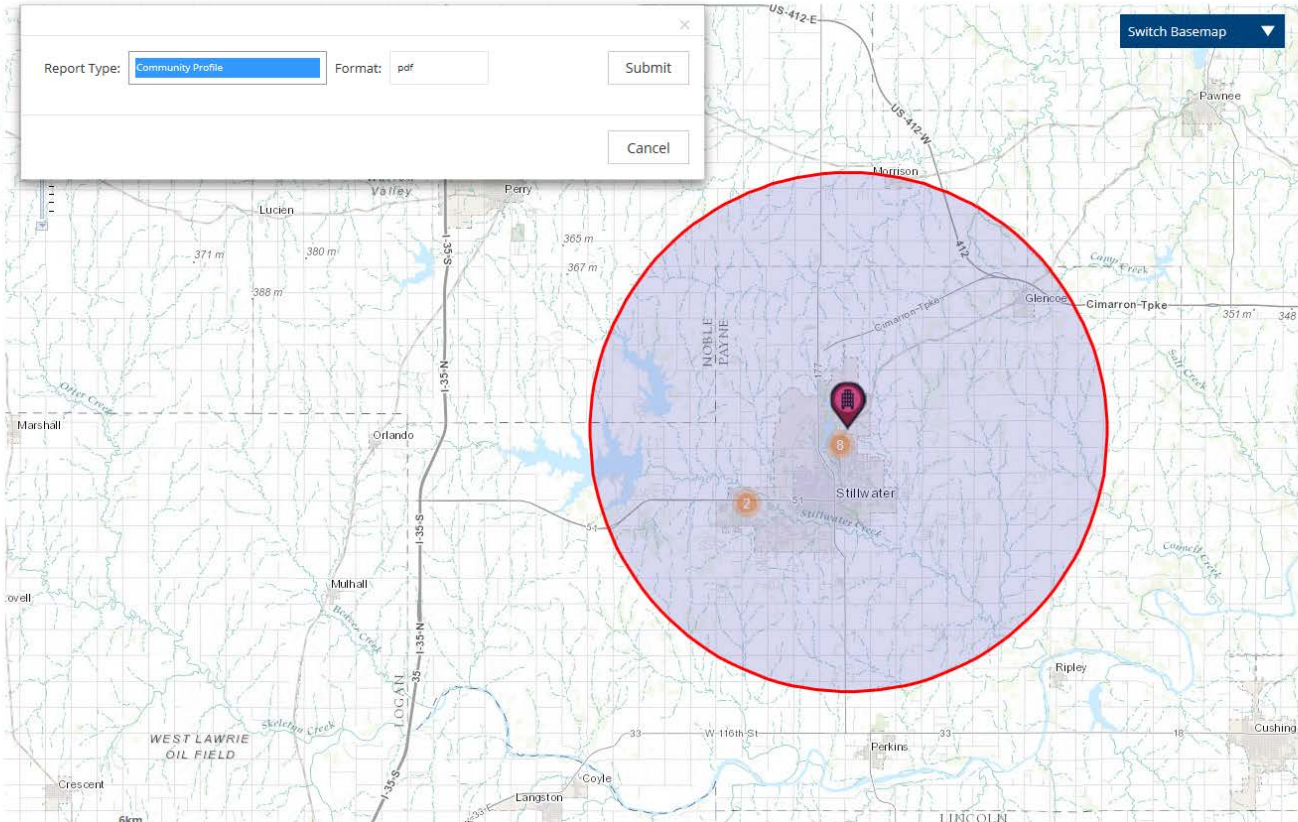
Community Profile

 Format:

pdf

Submit

Cancel




PROPERTIES

COMMUNITIES

BUSINESSES

Back

3003 N Perkins Rd, Stillwater 74075



Zoom To

Reports

COUNTY: PAYNE
MIN SIZE: 715000
MAX SIZE: 715000
YEAR BUILT: 1998
PROPERTY TYPE: INDUSTRIAL
SALE PRICE: 3
BROKER: ROBERT PIELSTICKER
BROKER ADDRESS: 1401 S BOULDER AVE SUITE 100 TULSA OK 74119
BROKER PHONE: (918) 392-7268
BROKER EMAIL: BOB.PIELSTICKER@CBRE-OK.COM

Export

Buildings Search

OKLAHOMA
DEPARTMENT OF COMMERCE

Building

100,000

SQ FT MAX

COUNTY

Stillwater

More Filters

Research Tool

Pin

Line

Shape

Switch Basemap


PROPERTIES

COMMUNITIES

BUSINESSES

Back

3003 N Perkins Rd, Stillwater 74075



Zoom To

Reports

COUNTY: PAYNE

MIN SIZE: 715000

MAX SIZE: 715000

YEAR BUILT: 1998

PROPERTY TYPE: INDUSTRIAL

SALE PRICE: 3

BROKER: ROBERT PIELSTICKER

BROKER ADDRESS: 1401 S BOULDER AVE SUITE 100 TULSA OK 74119

BROKER PHONE: (918) 392-7268

BROKER EMAIL: BOB.PIELSTICKER@CBRE-OK.COM

Export

DEMGRAPHIC LAYERS

COMMUNITY FEATURES

Airports

Indian Lands

Counties

Hospitals

Rail Service

Interstates/Highways

College

Military Bases

5 Pct Areas

OZ Areas

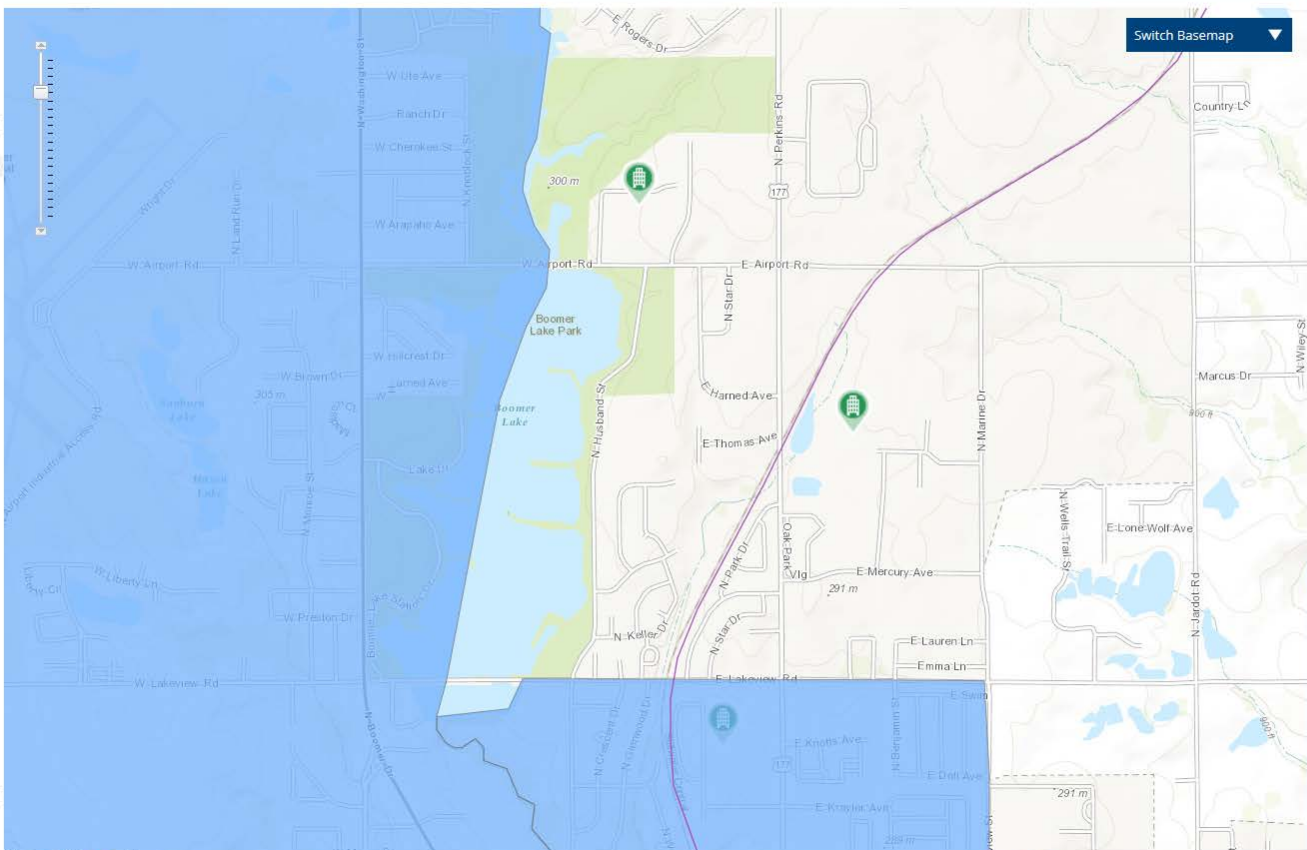
EZ Areas

SEQ

Rural Areas

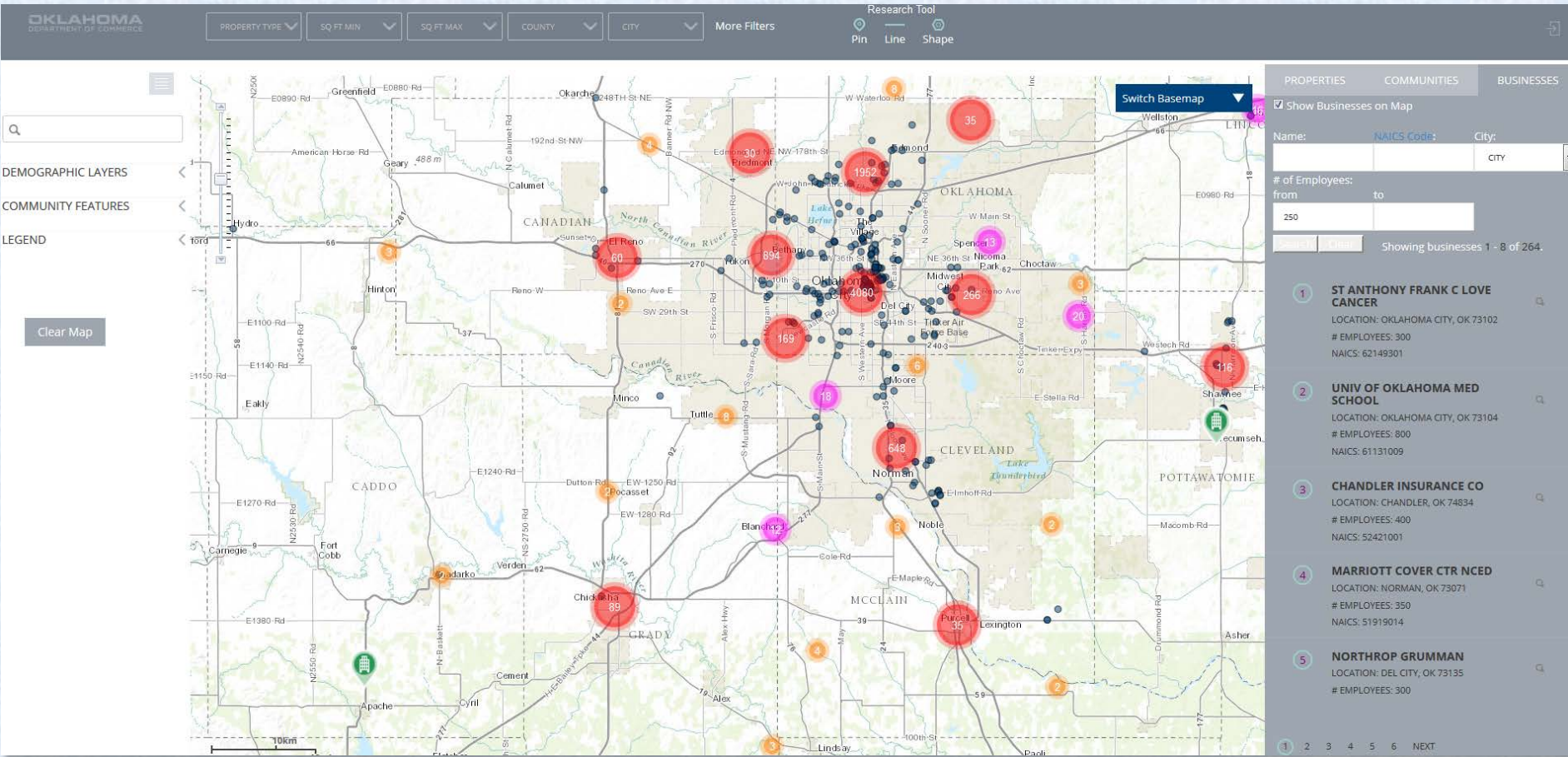
LEGEND

<http://www.locateok.com/index.html>



4

Businesses Search



Businesses Search

OKLAHOMA
DEPARTMENT OF COMMERCE

PROPERTY TYPE ▼ SQ FT MIN ▼ SQ FT MAX ▼ COUNTY ▼ CITY ▼ More Filters

Research Tool
Pin Line Shape

Q

DEMOGRAPHIC LAYERS

COMMUNITY FEATURES

LEGEND

Clear Map

Switch Basemap ▼

PROPERTIES

COMMUNITIES

BUSINESSES

☒ Show Businesses on Map

Name: NAICS Code: City:

Norman

of Employees:

from to

250

Showing businesses 1 - 8 of 22.

1

OKLAHOMA VETRANS CTR

LOCATION: NORMAN, OK 73071

EMPLOYEES: 350

NAICS: 62311015

2

QUAD/GRAPHICS INC

LOCATION: NORMAN, OK 73071

EMPLOYEES: 260

NAICS: 32311109

3

HEALTH PROMOTION SVC

LOCATION: NORMAN, OK 73071

EMPLOYEES: 2700

NAICS: 62419016

4

GRIFIN MEMORIAL HOSPITAL

LOCATION: NORMAN, OK 73071

EMPLOYEES: 600

NAICS: 62211002

5

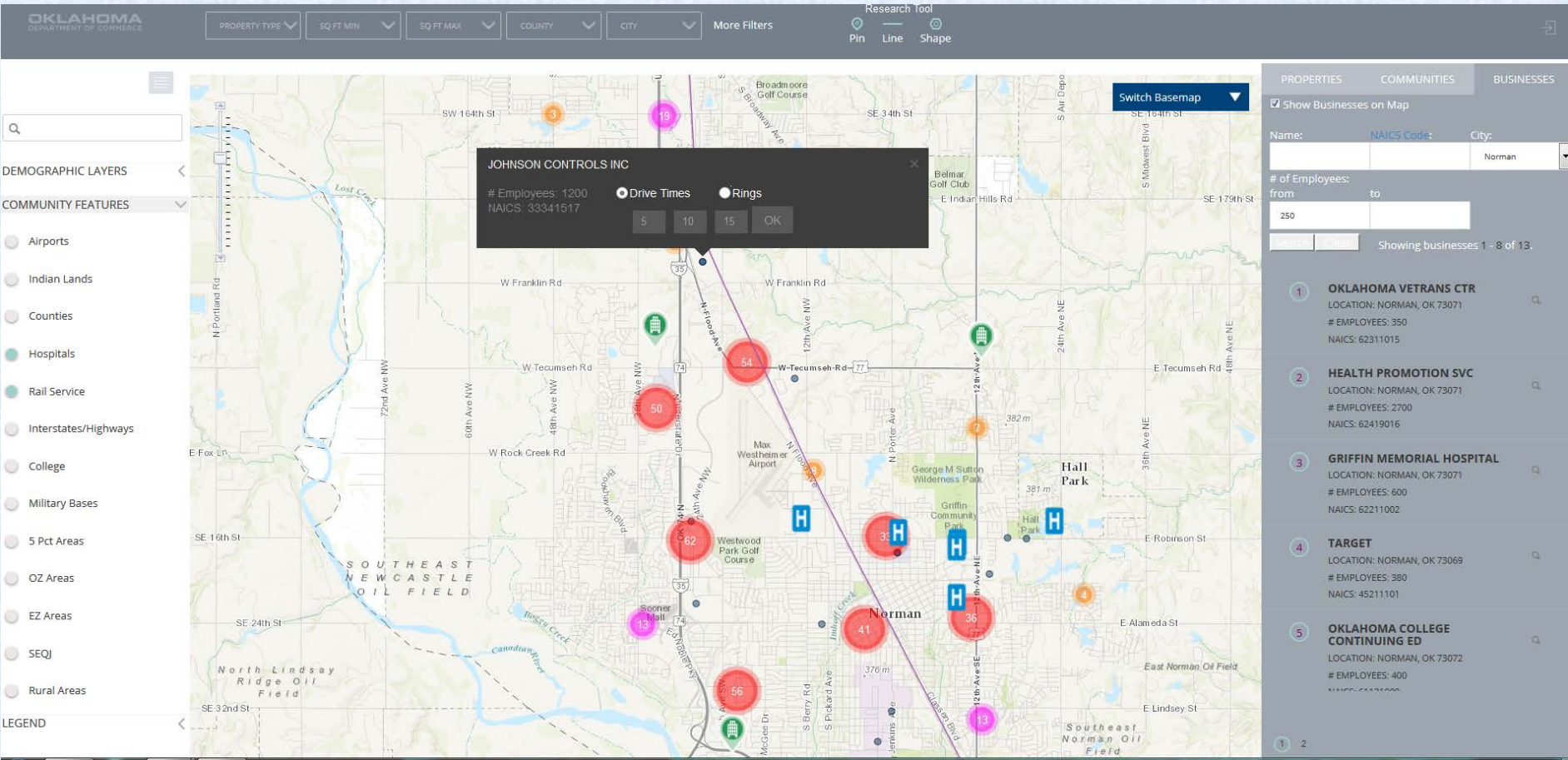
TARGET

LOCATION: NORMAN, OK 73069

EMPLOYEES: 380

NAICS: 45211101

1 2 3





Questions

&/or

Comments



Contact Information



www.okcommerce.gov

locateok.com

Lesli Crofford



Research & Economic Analysis
lesli.crofford@okcommerce.gov
405-815-5120

Mike Sexton



Community Development
mike.sexton@okcommerce.gov
405-815-5189

Jason Elliott



www.giswebtech.com
jason@giswebtech.com
404-984-0269

