

What's Happening in My Watershed?

How Implementing a GIS system to Utilize Spatial Data and Digital Collection Techniques can help Solve Watershed Issues.

Mindi J. Parsell
City of Tulsa - Stormwater Quality

Overview

- Where did we come from?
- What was the Process to get started?
- What are we doing now?
- Where are we going?
 - Utilizing our collected data to target education and enforcement to improve the health of the watersheds in our community.

Where did we come from?

- Full Paper Copies of all work.
- No digital data collection.
- No useable interactive Maps
- Not utilizing the Spatial data available.
- Using what has always worked.

Where did we come from?

- Full paper copies of all work.
 - This leads to ...
 - Filing cabinets full of data
 - Lost data
 - Data that is hard to utilize
 - Data that is forgotten
 - Prevents easy access, and utilization

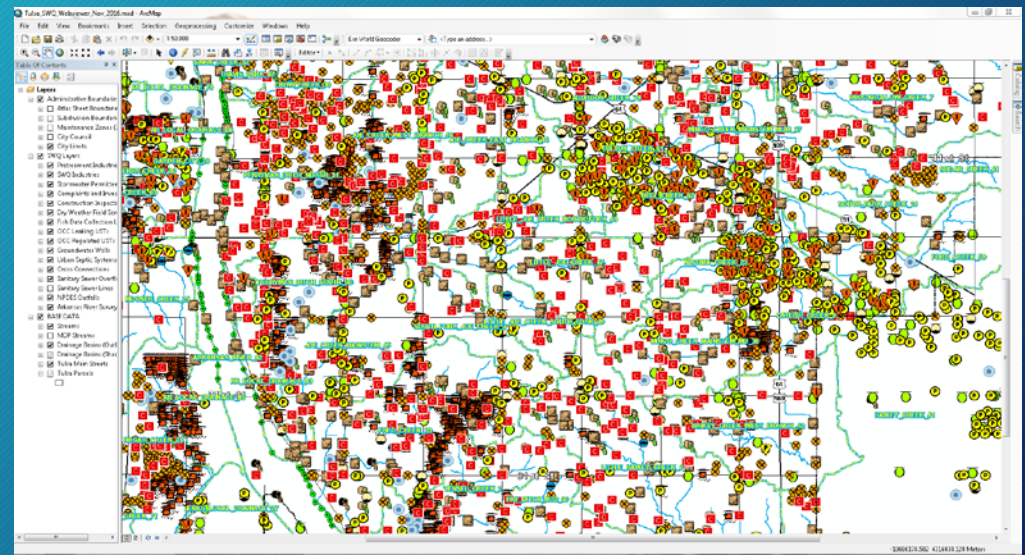


Where did we come from?

- No digital data collection.
 - Cumbersome to collect data
 - Carrying extra equipment
 - Lack of ability to take pictures and directly attach to location/ data being collected
 - Causes data to be collected via unusual means
 - Cell phone pictures of instrument read outs to fill out paper work later.

Where did we come from?

- No useable interactive maps.
 - Had a map prepared by a contractor.
 - Limited data analysis.
- Not utilizing the spatial data available.
 - Not even using the limited analysis available.



Where did we come from?

- Using what has always worked.
 - Not necessarily a bad thing
 - Sometimes things are done a certain way for specific reasons
 - It is comfortable for people already trained
 - This can lead to working harder not smarter

What was the process to get started?

- Looked through what had been created.
- Assessed the data needs of the group
- Assessed the data needs per our permit
- Assessed the available technology
- Assembled the data that was readily available in city databases
- Collected open source data needed
- Started contacting people to address missing data needs

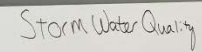
What was the process to get started?

- Looked through what had been created.
 - Looked at the contractor map
 - Looked at the data created in house
 - Looked at how things were stored and formatted

What was the process to get Started?

- Assessed the data needs of the group
 - What will help my field personnel?
 - How can I make their job easier or more efficient?
 - The smarter not harder mentality

- Assessed the data needs per our permit

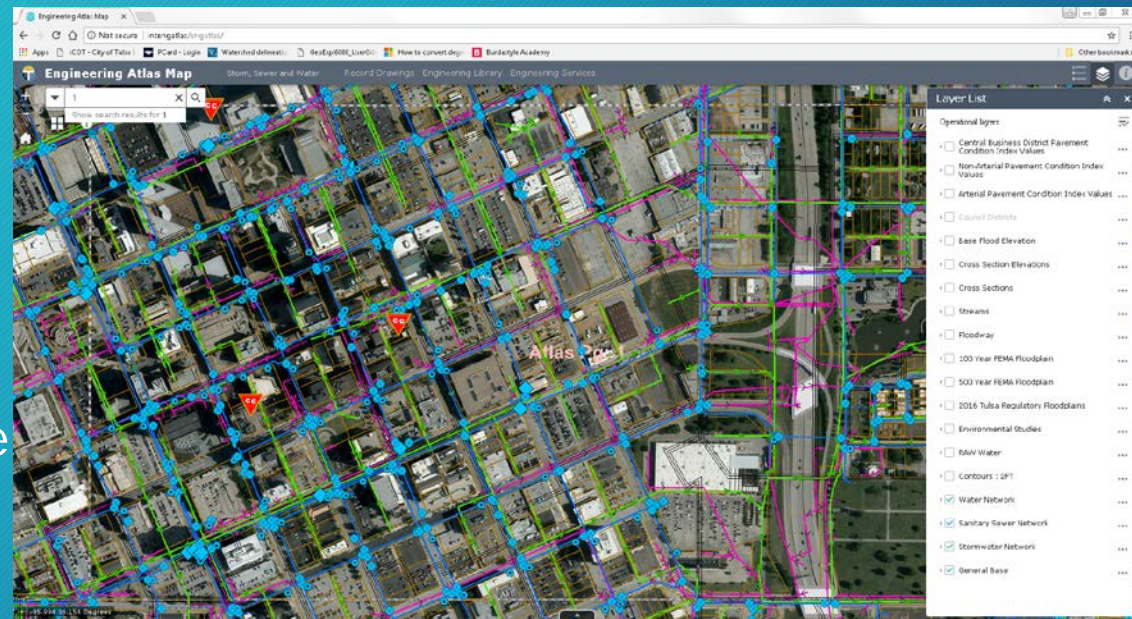


What was the process to get started?

- Assessed the available technology
 - What do we have at our disposal to use?
 - Computers
 - Cell Phones
 - GPS Units
 - What all will we need training on to be able to use easily?
 - Consider personnel
 - Consider previous training

What was the process to get started?

- Assembled the data that was readily available in city databases
 - Streets Data
 - Water Infrastructure
 - Sanitary Sewer Infrastructure
 - Stormwater Infrastructure
 - Municipal districts
 - City Council Districts
 - Parcel Data
 - ETC.



What was the process to get started?

- Collected open source data needed
 - FEMA Flood Plain
 - Land Cover data - USGS
 - Soils Data - USDA
 - DEQ Data
 - PDES Discharges
 - TMDL's
 - Etc.

What was the process to get started?

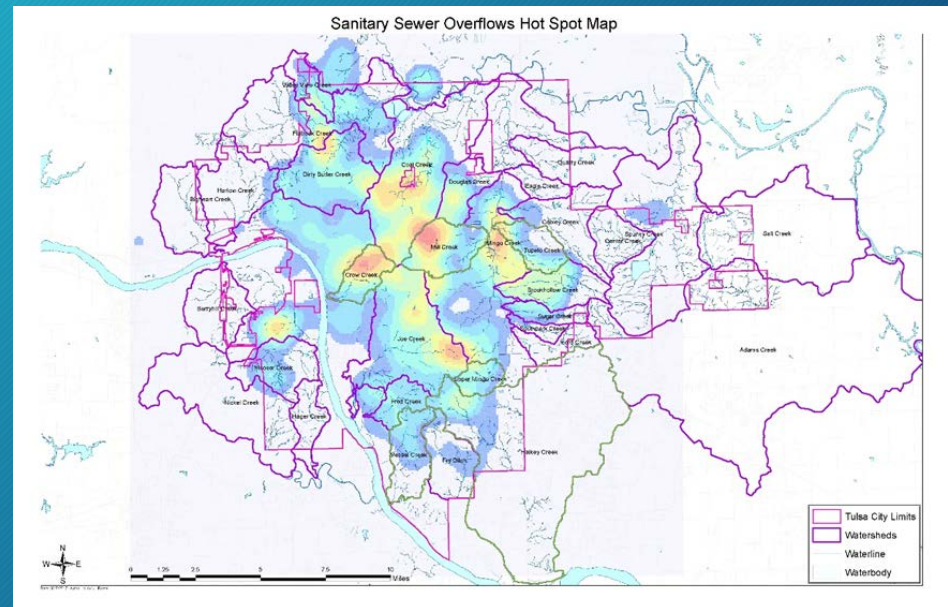
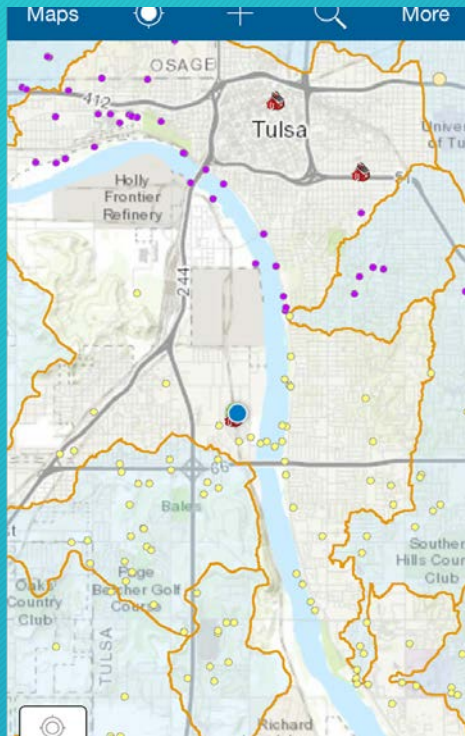
- Started contacting people to address missing data needs
 - Sewer Dept.- Sanitary Sewer Overflows, Fats Oils and Grease Contacts
 - Water Dept. - Flushing, Breaks, Leaks, TOL's
 - Fire Dept. - Hydrant Flushing, Calls, and HAZMAT responses
 - Streets Dept. - Salt & Sand Application, Mowing Collections, Litter Pick up
 - OK Corp. Commission - UST's leaking and otherwise
 - ODEQ - Septic Permits, Non-exposure Permits

What are we doing now?

- Implementing GIS
 - Using Collector Apps in the field
 - Using spatial Analysis to find what is going on in the areas we work in.
- Causing less paper waste
- Moving toward a robust GIS data set for Analysis
- Implementing an Asset management system to track our Investigations, and Inspections.

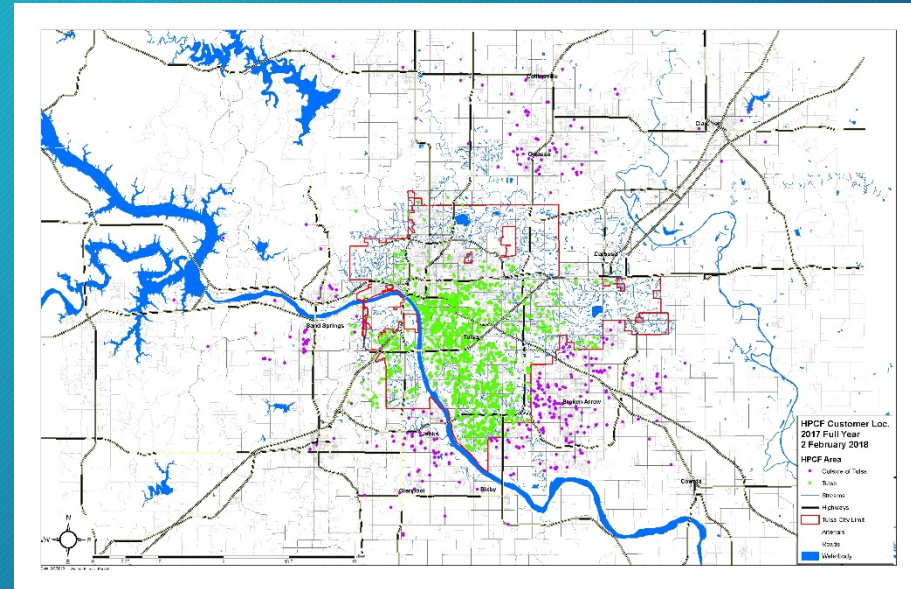
What are we doing now?

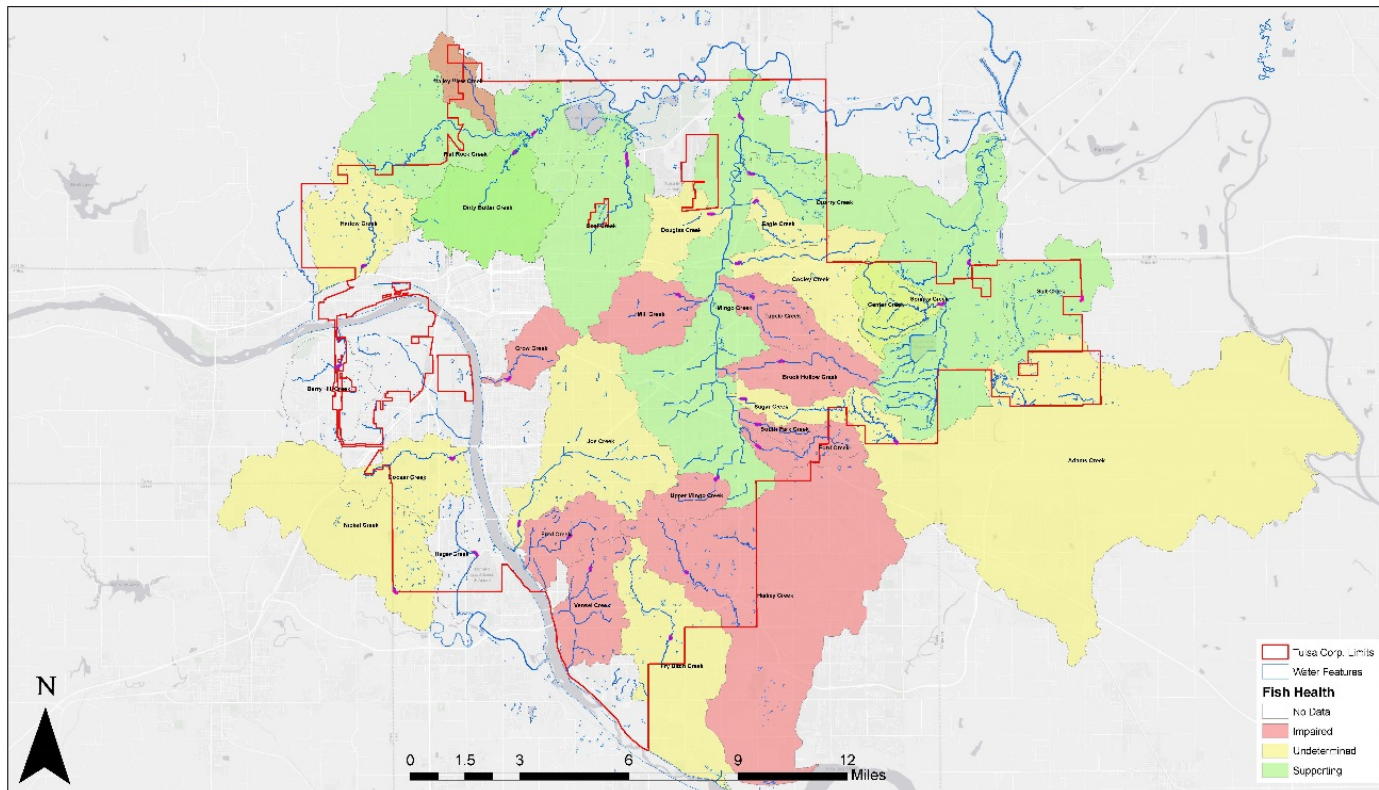
- Implementing GIS
- Using Collector Apps in the field
- Using spatial Analysis to find what is going on in the areas we work in.

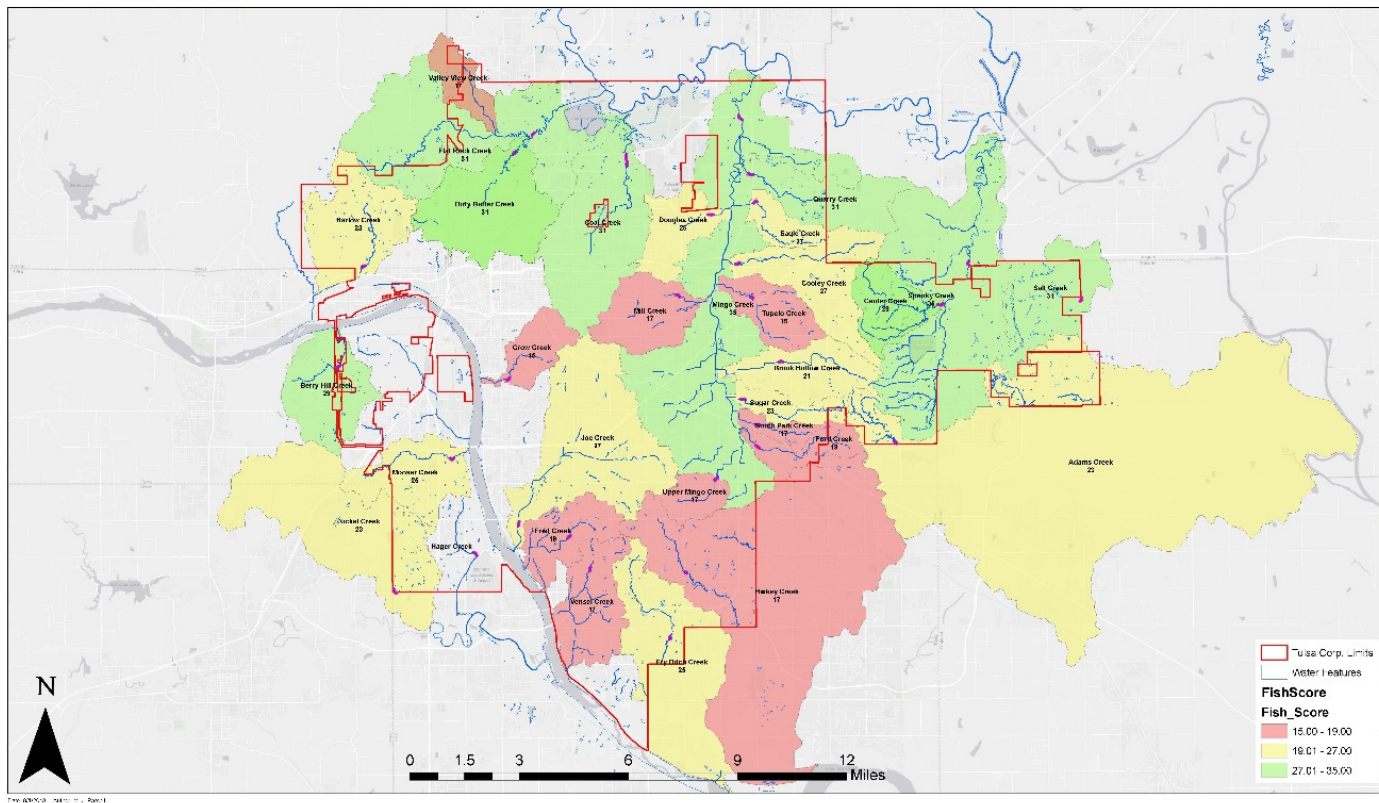


What are we doing now?

- Moving toward a robust GIS data set for Analysis
 - Collecting data in the field
 - Dry Weather Field Screening
 - Habitat Assessments
 - Macro Collections
 - HPCF Patrons
 - Inputting old data and tying to geographic locations
 - Floatables data



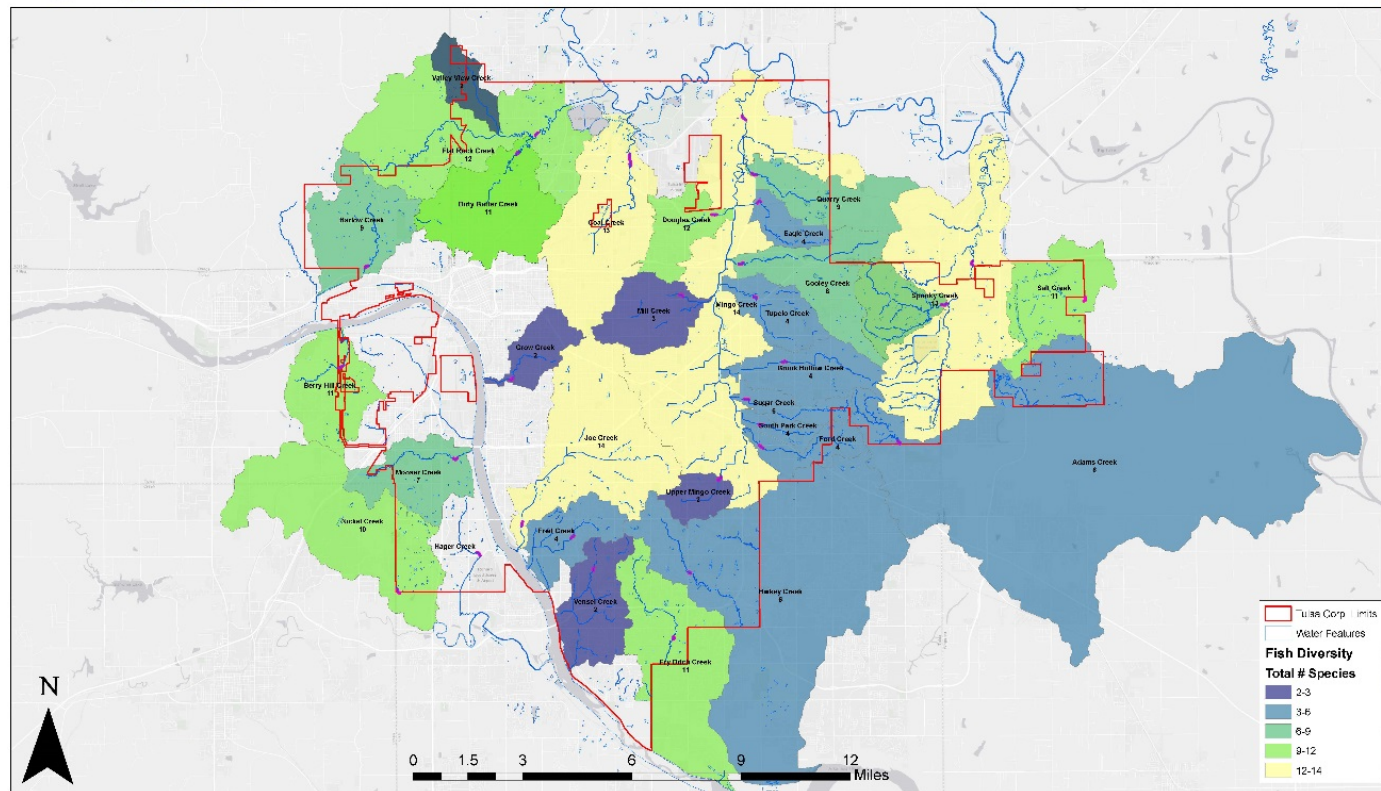




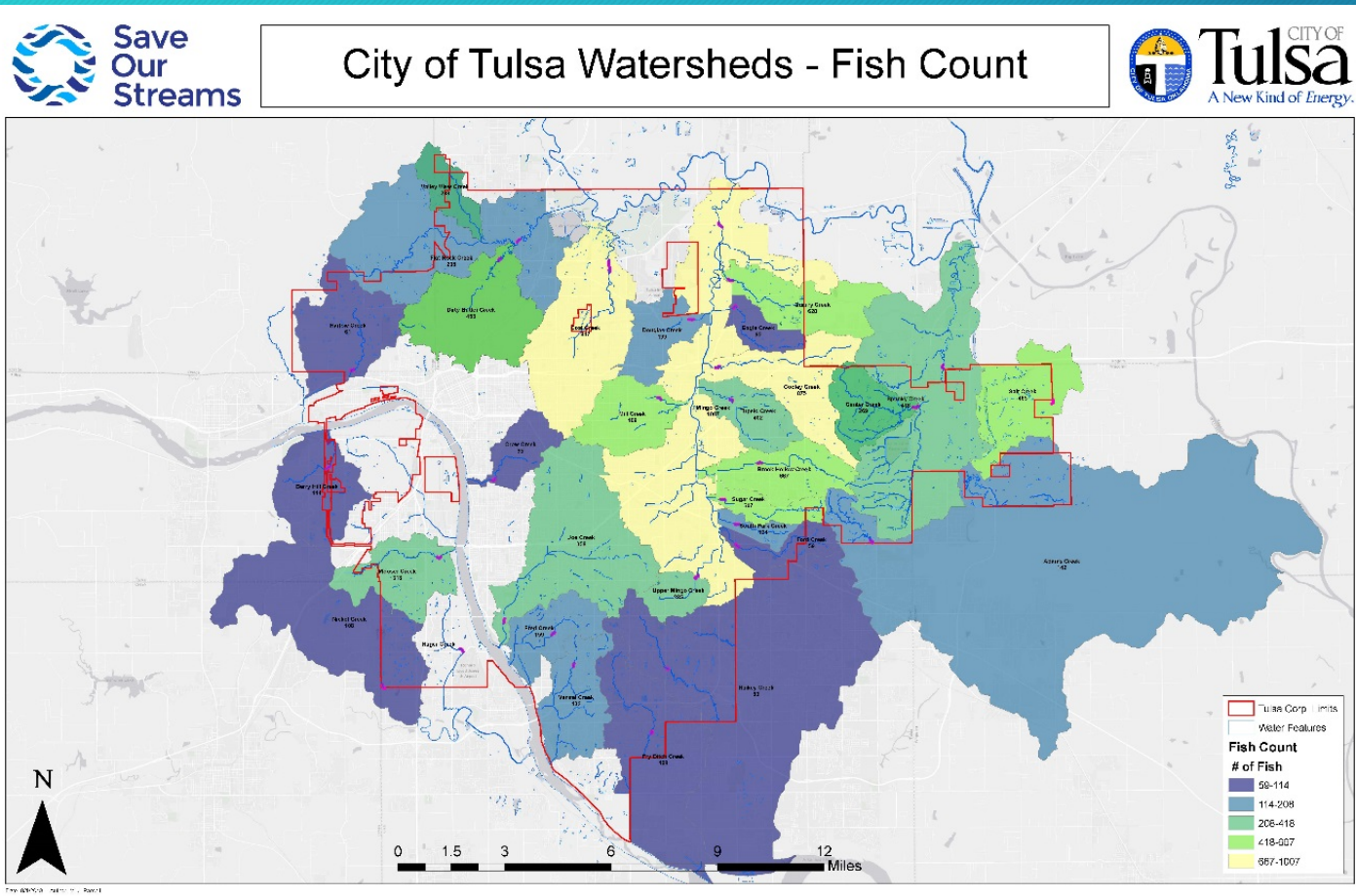
What are we doing now?



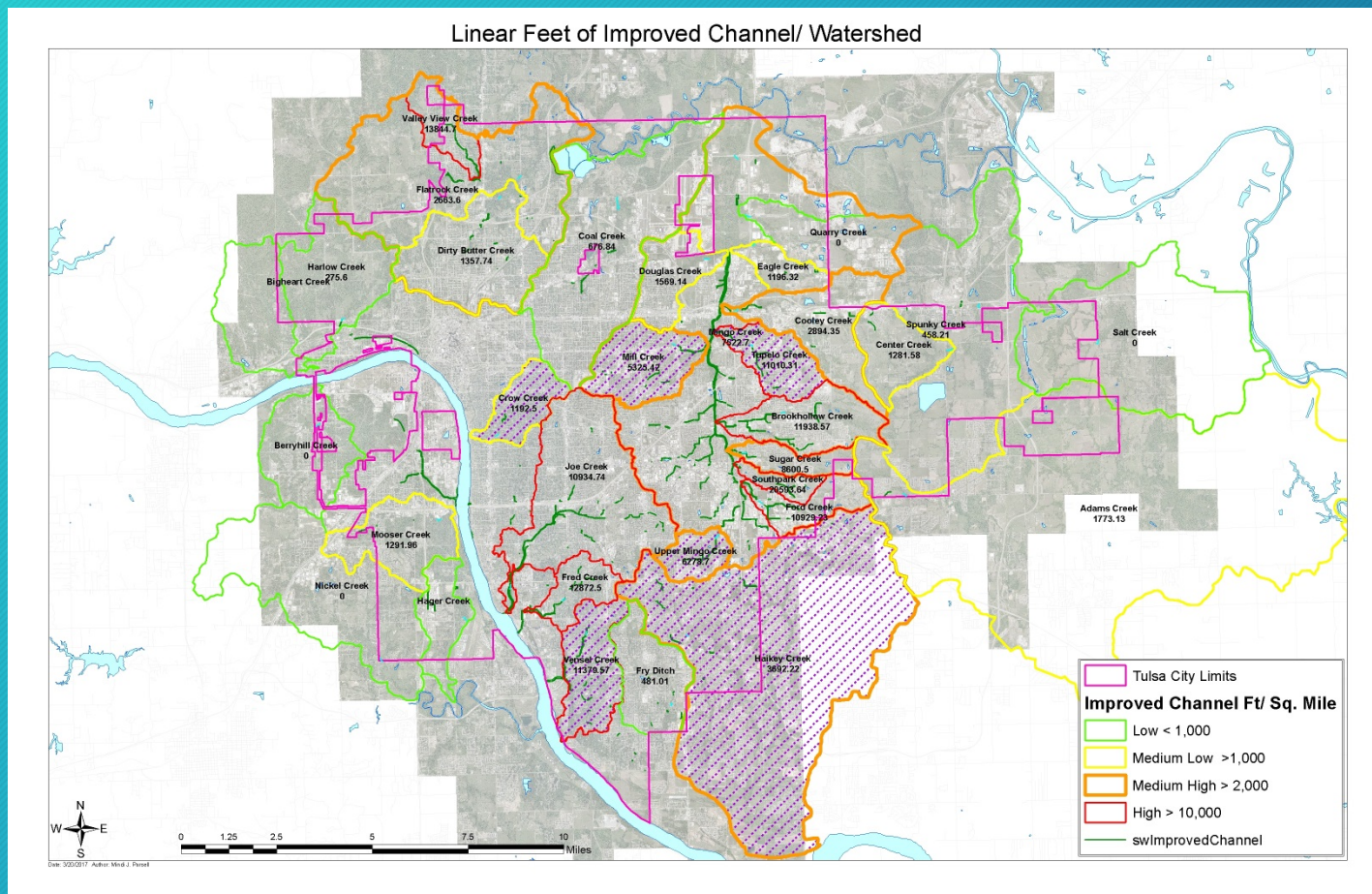
City of Tulsa Watersheds - Fish Diversity



What are we doing now?



What are we doing now?



What are we doing now?

- Implementing an Asset management system to track our Investigations, and Inspections.
 - Lucy
 - Investigations work order
 - Inspection forms
 - IHRR
 - Construction
 - HPCF – Household Pollution Collection Facility work order

The screenshot displays the 'Lucy' web application interface for the 'HPCF Appointment Form'. The interface includes a navigation bar with 'Home', 'HPCF Work for Today', and 'HPCF Appointment Form' tabs. A sidebar on the left contains icons for adding, editing, deleting, and viewing records. The main form area is titled 'HPCF Appointment Form' and contains the following fields:

- First Name**, **Last Name**, **Municipality*** (dropdown menu), **Status** (dropdown menu), **Source** (dropdown menu), **Appointment Date** (calendar icon), and **Appointment Time** (clock icon).
- House #**, **Apart/Suite**, **Street Name**, **City** (Tulsa), **State** (OK), **Zip Code***, **Weight (lbs)***, **Utility Bill Number**, **Assigned Employee/ Who are you?*** (dropdown menu), **Outside Community Fee Scale**, **Vehicle Make/Model**, **Vehicle Tag #**, **Drivers License #**, **Voucher Number**, **MET Fee Scale**, and **Pollutants Collected/Comments** (text area).
- Rejected Materials** section with checkboxes for:
 - ☐ Rejected Latex Paint
 - ☐ Rejected Unknowns
 - ☐ Rejected Medicine
 - ☐ Rejected Ammunition
 - ☐ Rejected Radioactive Waste

Where are we going?

- Full Digital Data Collection (barring things required by law)
- Using Spatial Analysis to explain and possibly predict what is going on in individual watersheds.
 - Help target Education activities
 - Help Target Enforcement activities.
- Fully implementing our asset management program for job functions that are able to utilize it.

Where are we going?

- Creating an Illicit Discharge trace map for the Stormwater infrastructure.
 - Utility for
 - Investigations
 - DWFS
 - Finding Point Source Pollution
- <http://tryitlive.arcgis.com/illicitdischarge/>

Any Questions?