



esri

SEE
WHAT
OTHERS
CAN'T

esri

esri

SEE
WHAT
OTHERS
CAN'T

What's New in ArcGIS

Pamela Kersh

2019 ESRI UC

Plenary Session Agenda | GIS—The Intelligent Nervous System

Monday, July 8 | 8:30 AM–4:00 PM | Doors Open 7:45 AM | Halls F–H

Morning 8:30 AM–10:00 AM



Opening Keynote **Jack Dangermond »**

President, Esri

How humans understand the world is continually evolving. Today, GIS and geospatial infrastructure are powering this understanding by helping to create smarter organizations so everyone can effect positive change in our world. This is the intelligent nervous system that connects us all and allows for the evolution to happen in real time, using geography to bring it all together.

NatureServe

Biodiversity Conservation—Mapping the Places That Matter the Most



Technology Demonstrations

Join Esri staff and featured guest speakers as they demonstrate the diverse aspects of ArcGIS and introduce new products.

ArcGIS Apps

ArcGIS Business Analyst
ArcGIS Enterprise
ArcGIS Experience Builder
ArcGIS Solutions for Protected Area Management

ArcGIS Hub

ArcGIS Image Server
ArcGIS Indoors
ArcGIS Monitor
ArcGIS Notebooks
ArcGIS Online

ArcGIS Pro

ArcGIS Runtime
ArcGIS StoryMaps
ArcGIS Urban
Insights for ArcGIS
Tracker for ArcGIS

BIM/3D

Linear Referencing
Machine Learning
Parcel Editing
Advanced Analytics

Midmorning 10:30 AM–NOON



City of Pasadena, California

Everyday Ingenuity—Innovation and Design, Leading an Intelligent City



New York Metropolitan Transportation Authority (NY MTA)

Systems in Motion



ExxonMobil

ArcGIS Indoors—Building the Digital Ecosystem for the ExxonMobil Headquarters



City of Zwolle, Netherlands

Climate Adaptability and Involving Citizens with ArcGIS Hub



United Services Automobile Association (USAA)

Serving Military Members and Their Families When Catastrophe Strikes



U.S. Census Bureau

The 2020 Census—Mobilizing Everyone

Afternoon 2:00 PM–4:00 PM



African Parks

Managing and Restoring Protected Areas in Africa



Lurgan Schools, Northern Ireland

The Differences We Share—Effecting Change in Northern Ireland



Keynote

Ambassador Stefano Toscano »

Director, Geneva International Centre for Humanitarian Demining (GICHD)

GIS for Sustainable Peace

Keynote

Jane Goodall and E.O. Wilson »

The Importance of Biodiversity Conservation at a Global Scale: A Conversation with Jane Goodall, E.O. Wilson, and Jack Dangermond



ArcGIS Highlights:

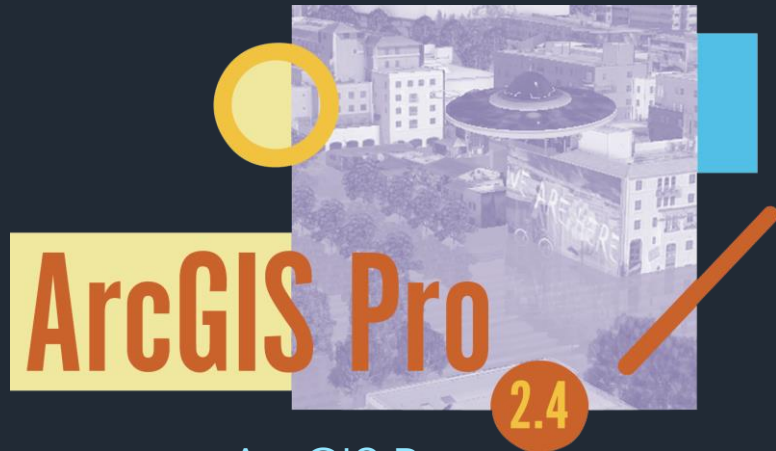
Key Updates

New Products

What You Need to Know

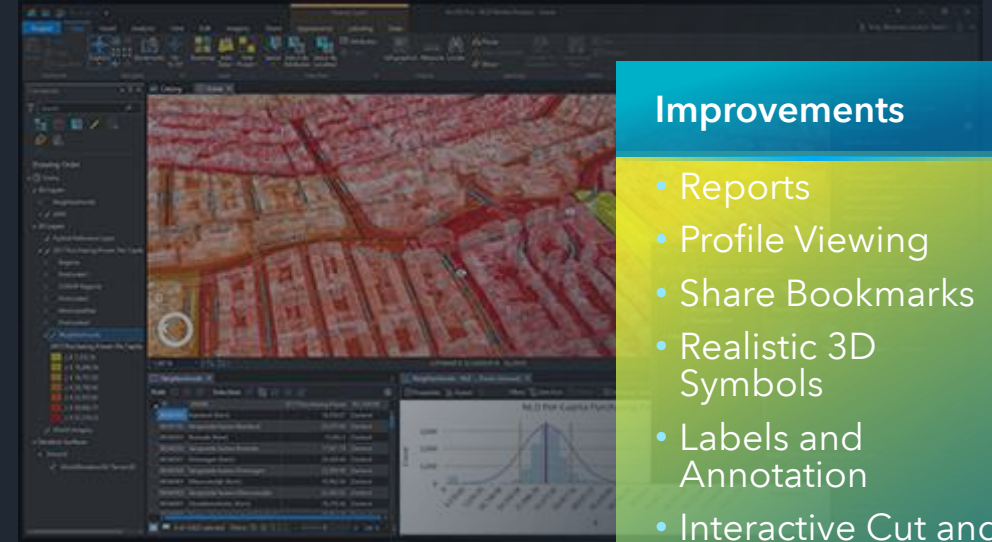
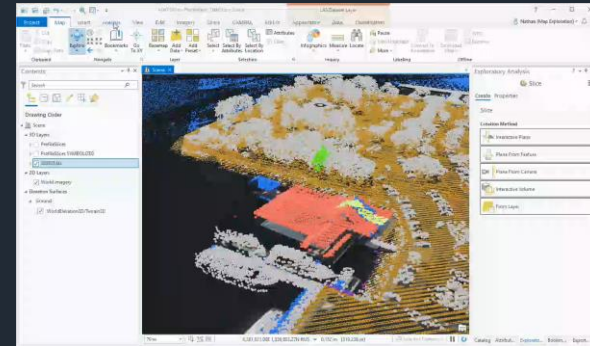
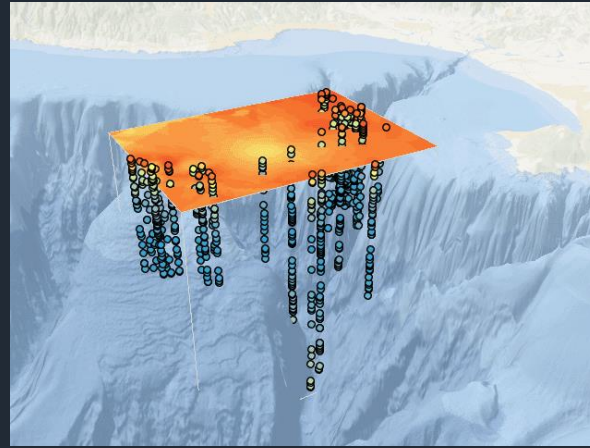


ArcGIS Pro



ArcGIS Pro

Apps



Improvements

- Reports
- Profile Viewing
- Share Bookmarks
- Realistic 3D Symbols
- Labels and Annotation
- Interactive Cut and Fill
- Working with Tables
- Multidimensional Data
- 3D EBK

Concurrent Use Licensing

"Upgrade your ArcGIS License Manager to 2019.0 before upgrading to Pro 2.4"

Pro 2.3

January

Pro 2.3.1

March

Pro 2.4

June

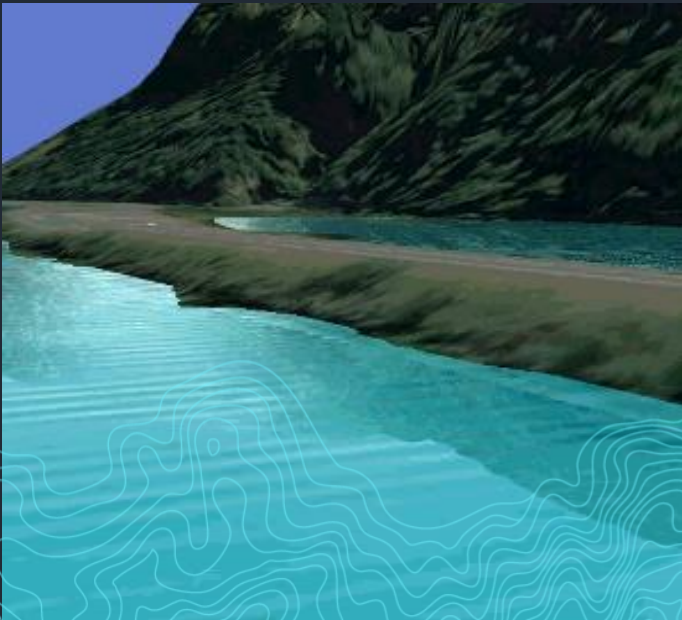
Pro 2.5

December

ArcGIS Pro

New

- Raster Pixel Editor
- Dynamic Feature Binning
- Parcel Editing
- Model Builder to Python
- Multipatch Editing
- Animated Water
- GeoAnalytics on Desktop



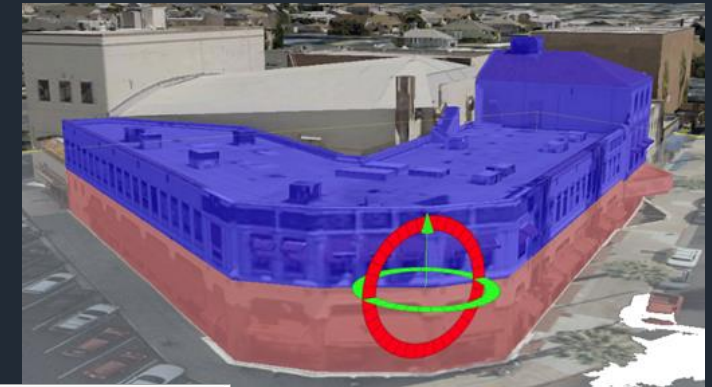
Water fill symbol



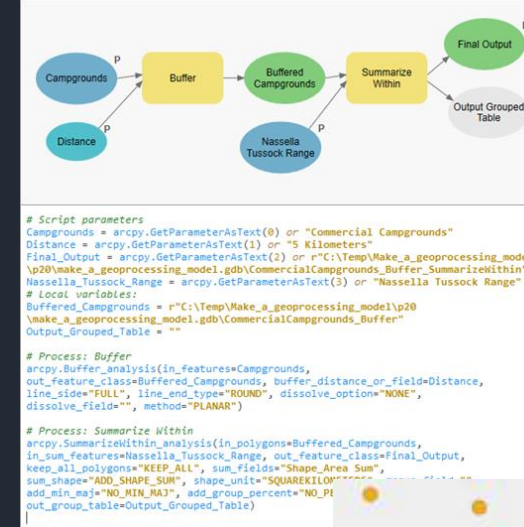
Dynamic Viewshed



Pixel Editor



Slice Multipatch

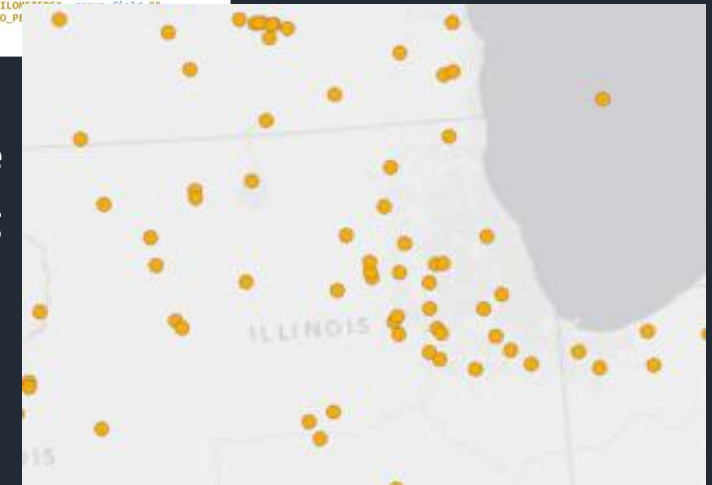


Enable
Feature
Binning

ModelBuilder to Python

*“Two new commands
to export a model to
Python:*

- Export To Python File*
- Send To Python Window*



ArcGIS Pro Road Ahead

Near-term

- Offset Printing
- Replication Workflows
- Parcel Adjustment
- Voxel Layers
- Tie Point Manager
- Geoprocessing Leveraging Spatial Datasets
- Python Notebooks
- Geoprocessing Scheduler
- Scripting Metadata
- Hydro Networks
- Create Network Dataset
- Multidimensional Raster Improvements
- Interactive Suitability Modeling

Mid-term

- Projects in the Enterprise
- Animated Symbols
- Material Textures
- Multipatch Editing in Stereo
- Layer Blend Modes
- Presentations
- GPS Support
- Dynamic Feature Clustering
- Voxel Layer Sharing
- Map Graphics
- New Extensions

Long-term

- Terrain Editing
- 3D Mesh as ground
- High Fidelity rendering

New



ArcGIS Pro Migration Guide

Essential tasks for migrating your organization from ArcMap to ArcGIS Pro.



ArcGIS Online Complete Mapping and Location Platform



Content

2D / 3D



Configurable

- 7+ Million Users
- Billions of Maps
- 25 Million Items
- 150k Open Datasets

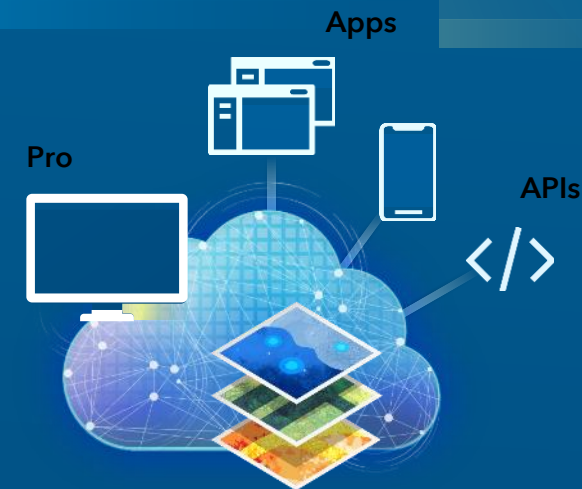
World's Largest Mapping
and Data-Sharing Ecosystem

New and Improved

- User Types
- Search
- Large Organization Administration
- Configurable Basemaps (Vector Feature Tiles)
- Smart Mapping Styles
- 3D
- New StoryMaps

Coming

- New Map Viewer
- Bulk User & Item Management
- Org-to-Org Collaboration
- Tracking
- Notebooks
- Hosted Imagery
- IoT Integration



StoryMaps

Exponentially Growing

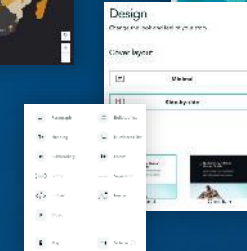
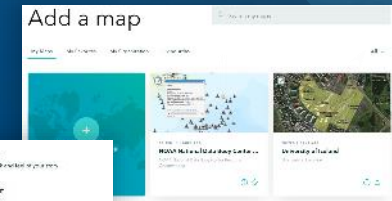
- Over a Million Stories
- 3,000+ / Day
- Millions of Views / Week

Next Generation

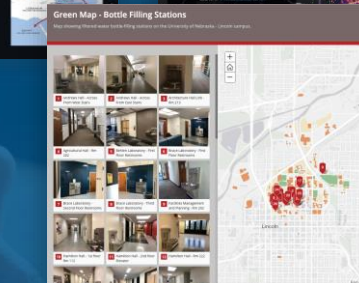
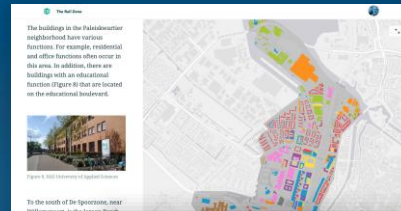
New

Easier

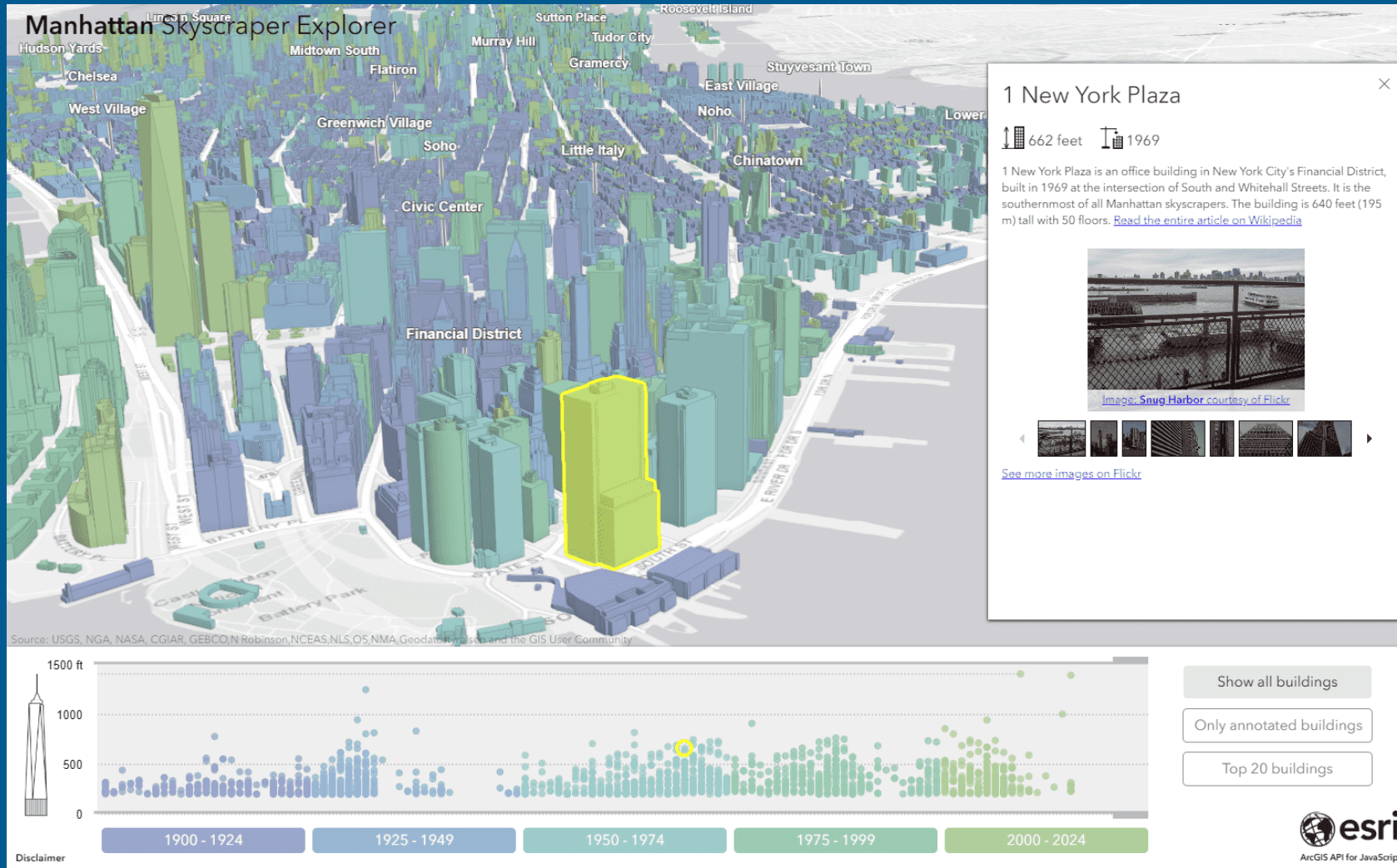
Mobile
Optimized



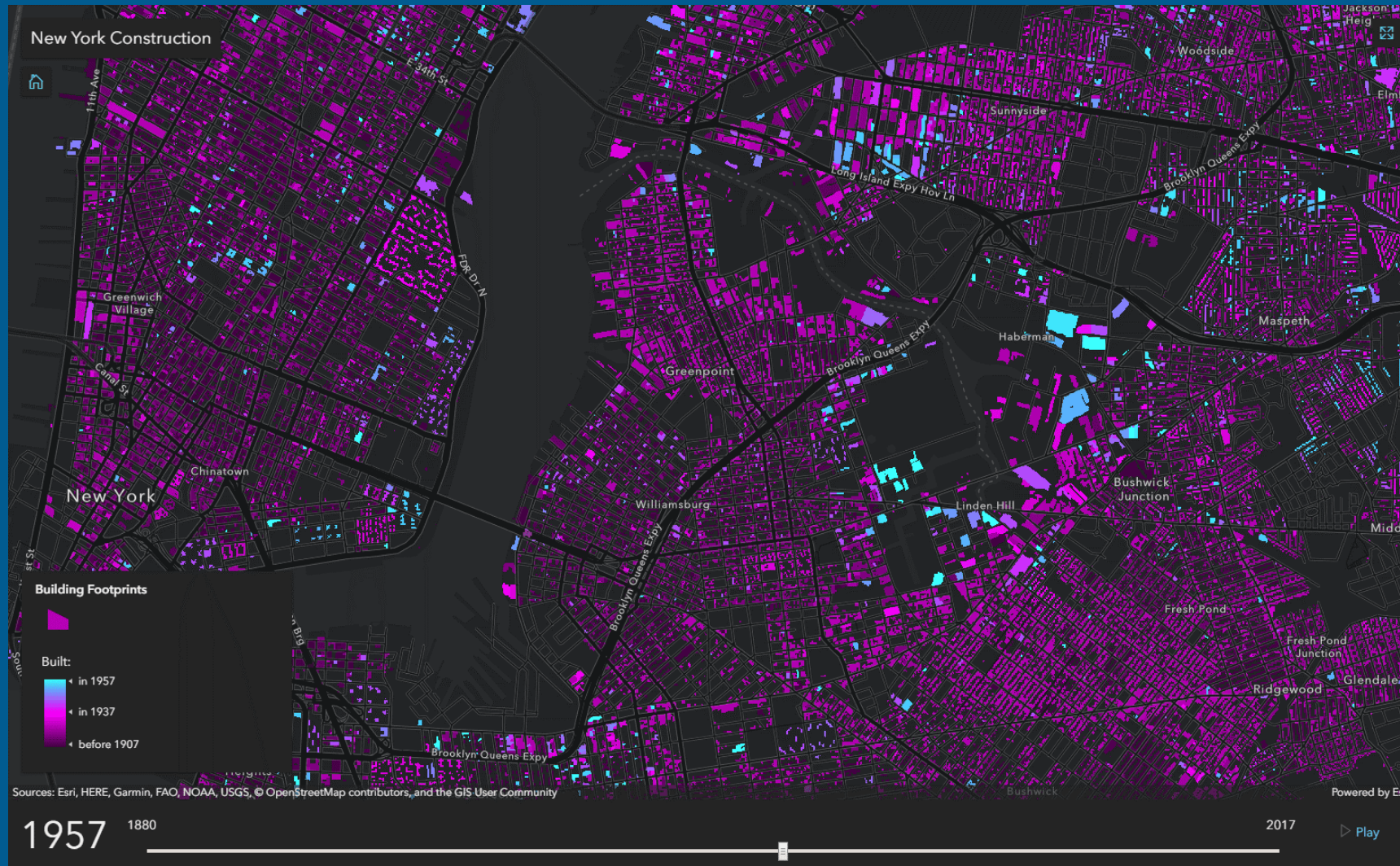
Integrated Mapping
Express Map



JavaScript API v 4.12

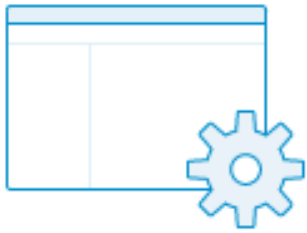


New Map Viewer



AGOL Administrative Workflows

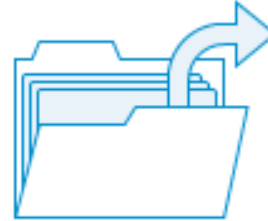
Get started with administration



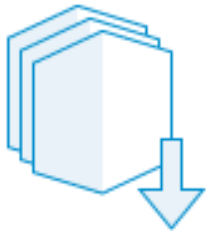
1 *Configure site*



2 *Invite members*



3 *Organize and
share content*



4 *Get apps*

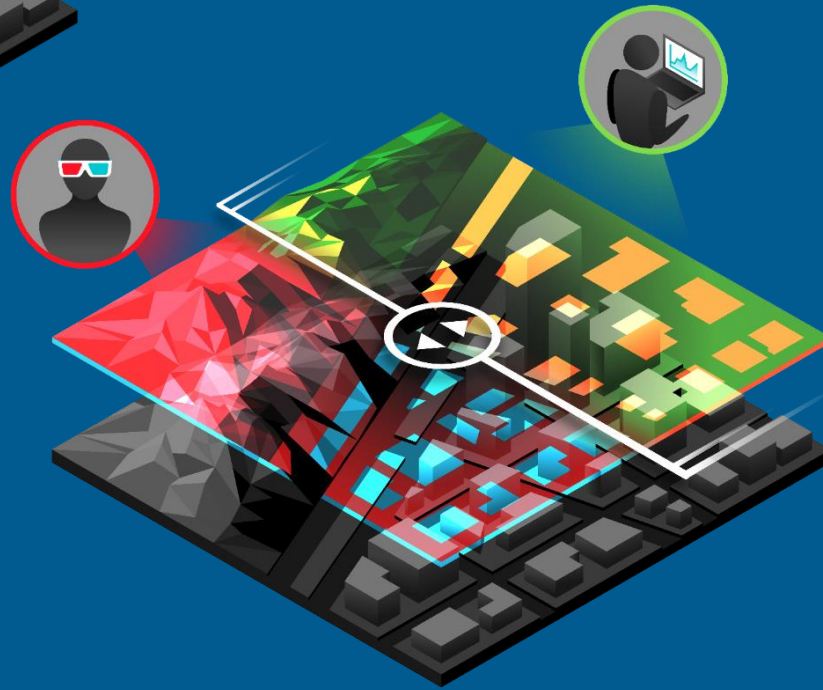


5 *Monitor usage*

Analytics for IoT



Imagery Services



Change Style

Hurricanes 1924-2014

1 Choose an attribute to show

Max Wind Speed (kn)

Min Pressure (mb)

Add attribute

2 Select a drawing style

Relationship

OPTIONS

Compare A to B

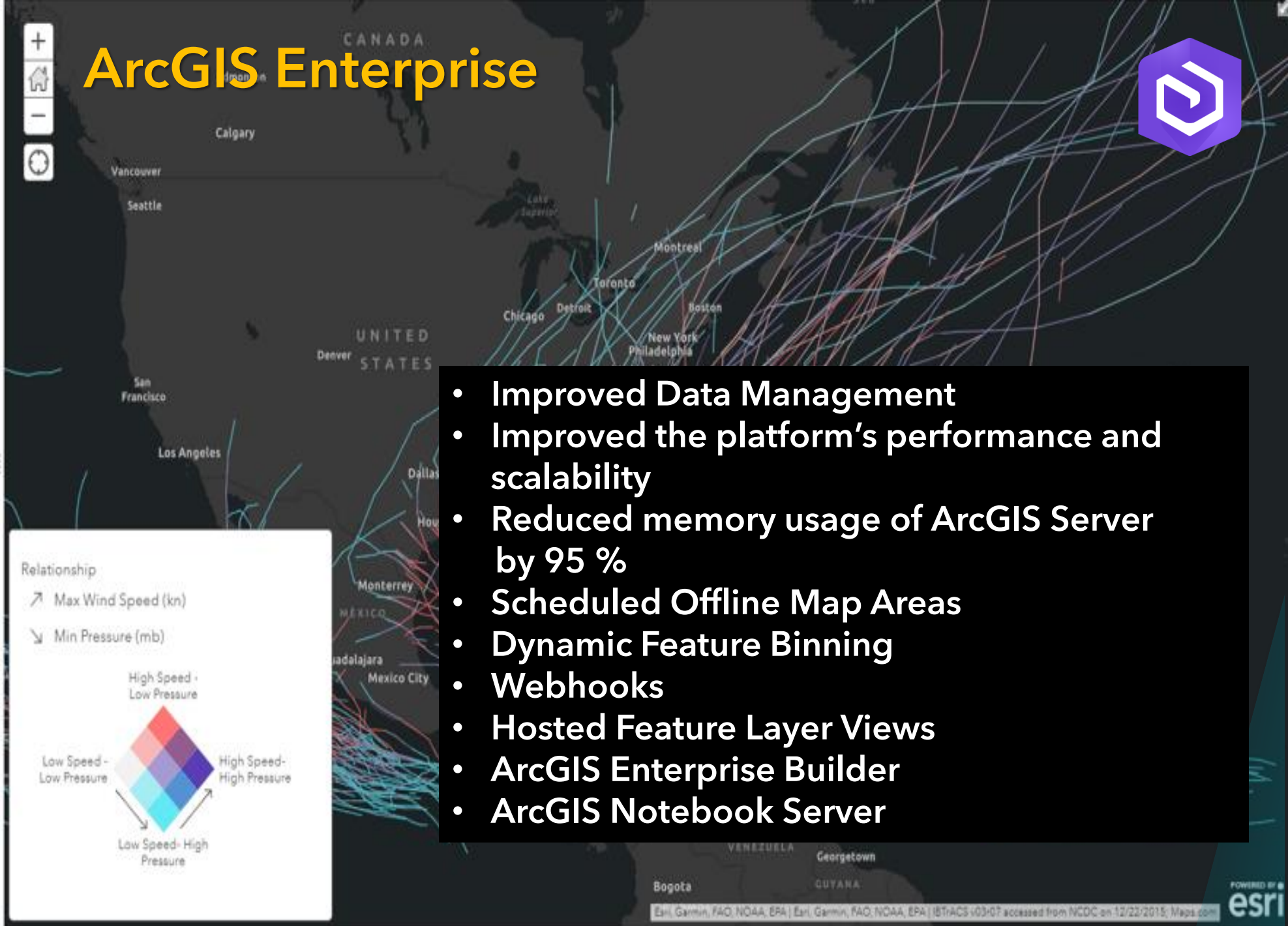
SELECT

Color and Size

SELECT

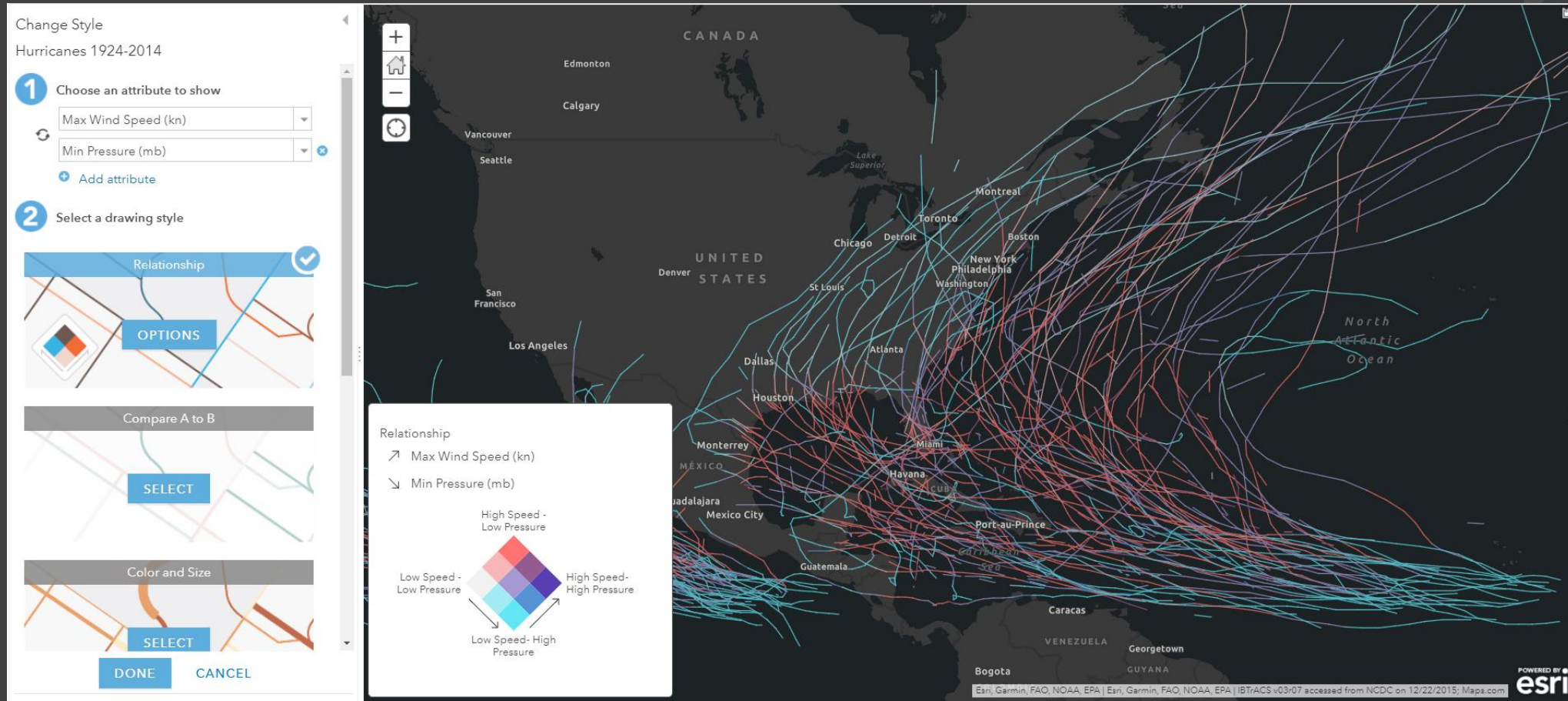
DONE CANCEL

ArcGIS Enterprise

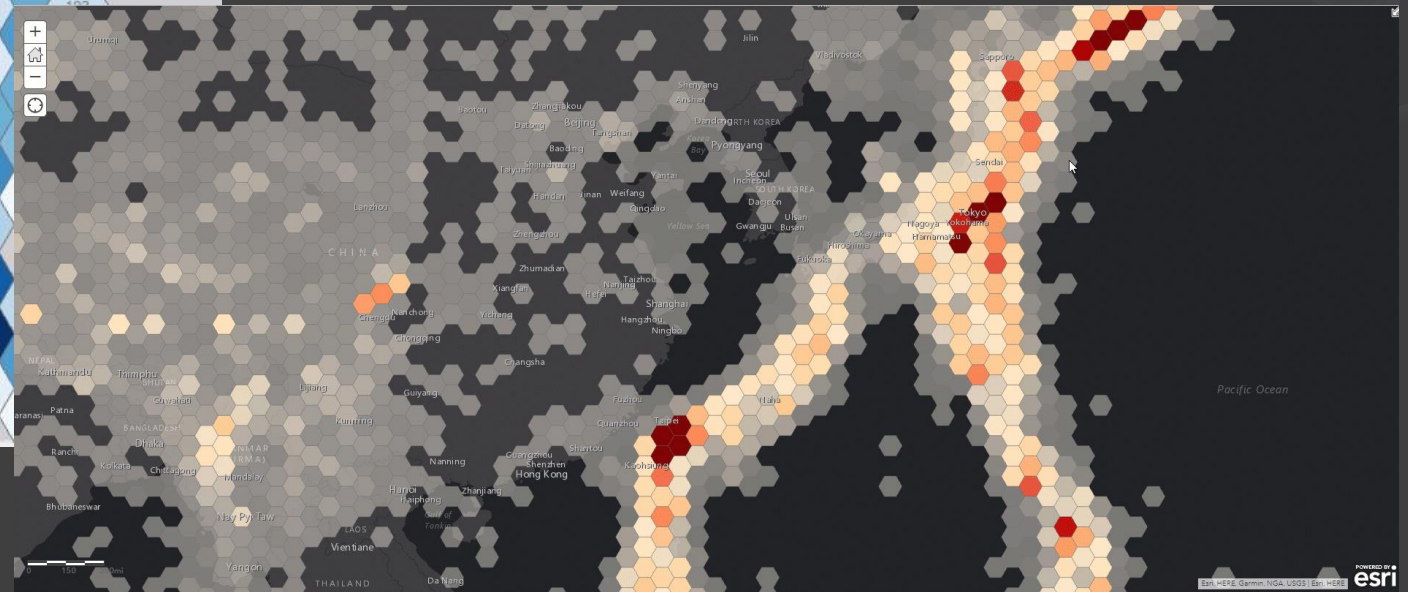
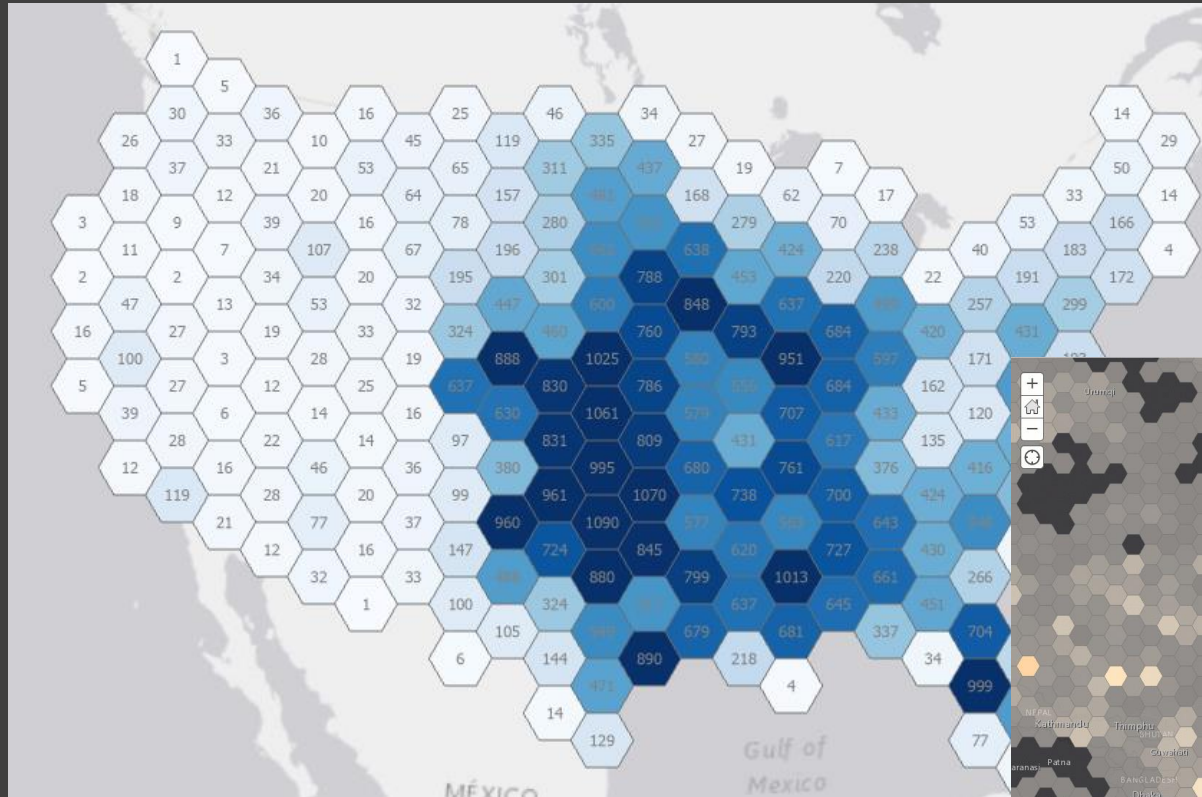


- Improved Data Management
- Improved the platform's performance and scalability
- Reduced memory usage of ArcGIS Server by 95 %
- Scheduled Offline Map Areas
- Dynamic Feature Binning
- Webhooks
- Hosted Feature Layer Views
- ArcGIS Enterprise Builder
- ArcGIS Notebook Server

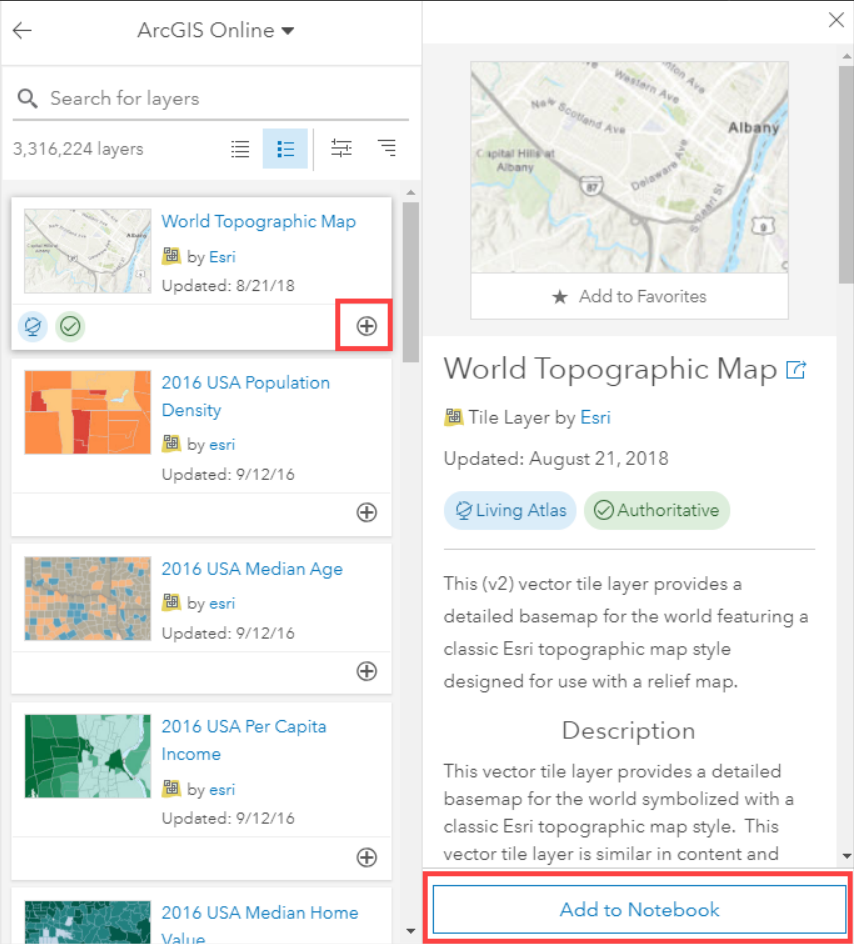
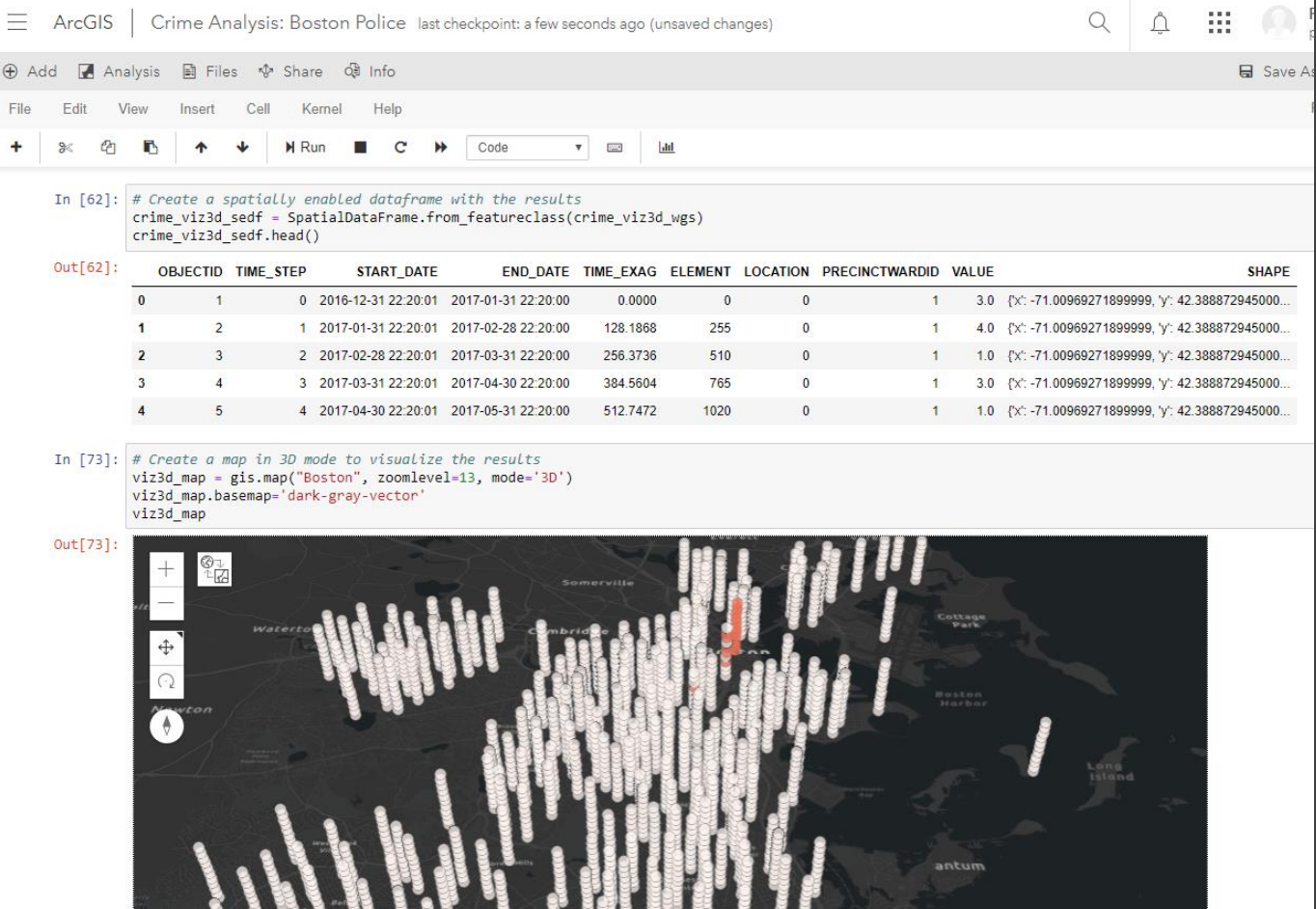
Relationship Visualization Style



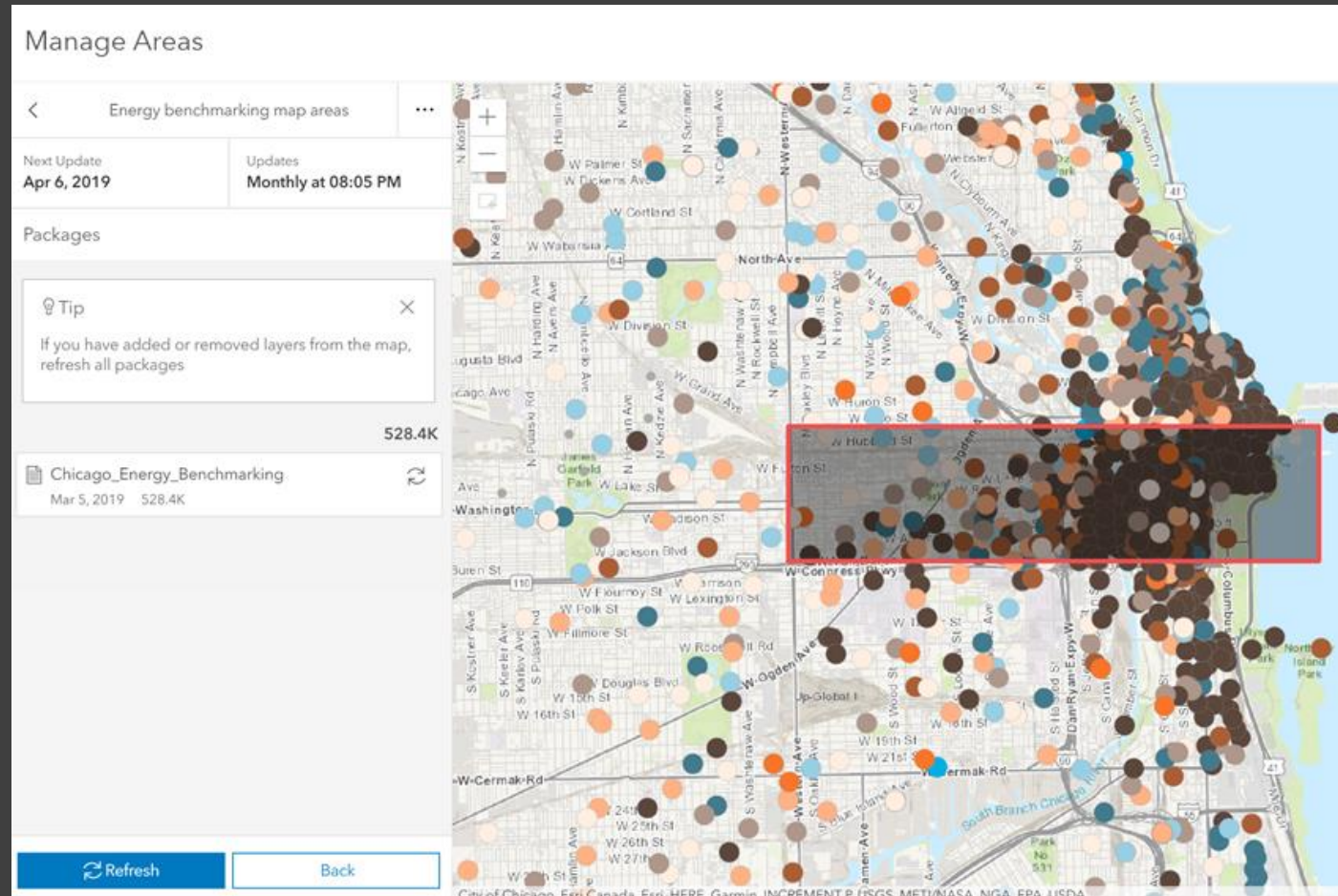
Dynamic Feature Binning



Notebook Server



Scheduled Offline Map Areas



Webhooks

ArcGIS Portal Directory | [Home](#)
[Portals](#) > 0123456789ABCDEF > [Create Webhook](#)
[API Reference](#)

Create Webhook

Webhook payload URL must be specified.

Name	<input type="text" value="Add a user"/>
Payload URL	<input type="text" value="https://hook.integromat.com/samwydnthf1ktbjpjo15f3kioleo"/>
Secret (Optional)	<input type="text"/>
Configuration properties	<pre>{ "deactivationPolicy": {"numberOfFailures":5,"daysInPast":5} }</pre>

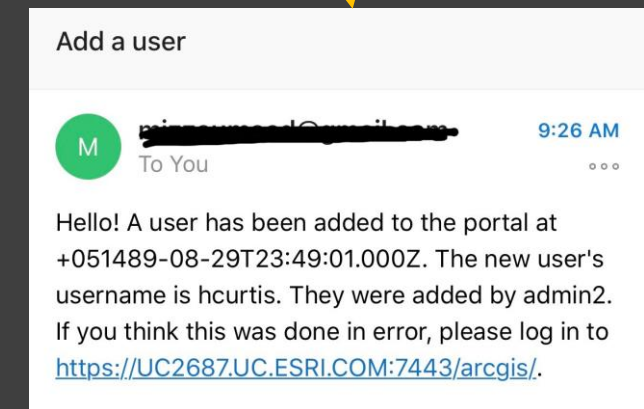
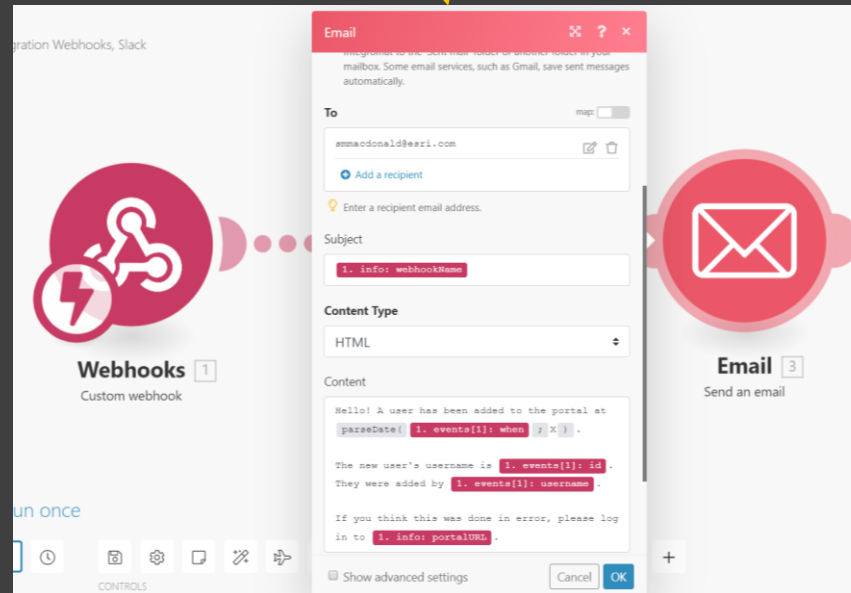
Which events would you like to trigger this webhook?

☒ Let me define manually

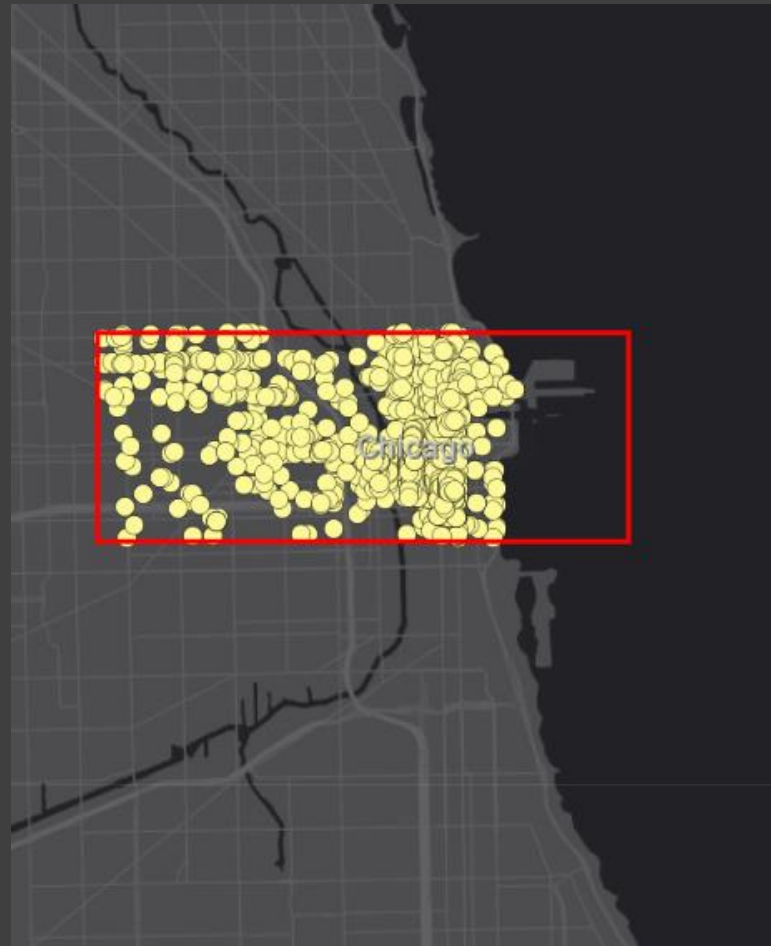
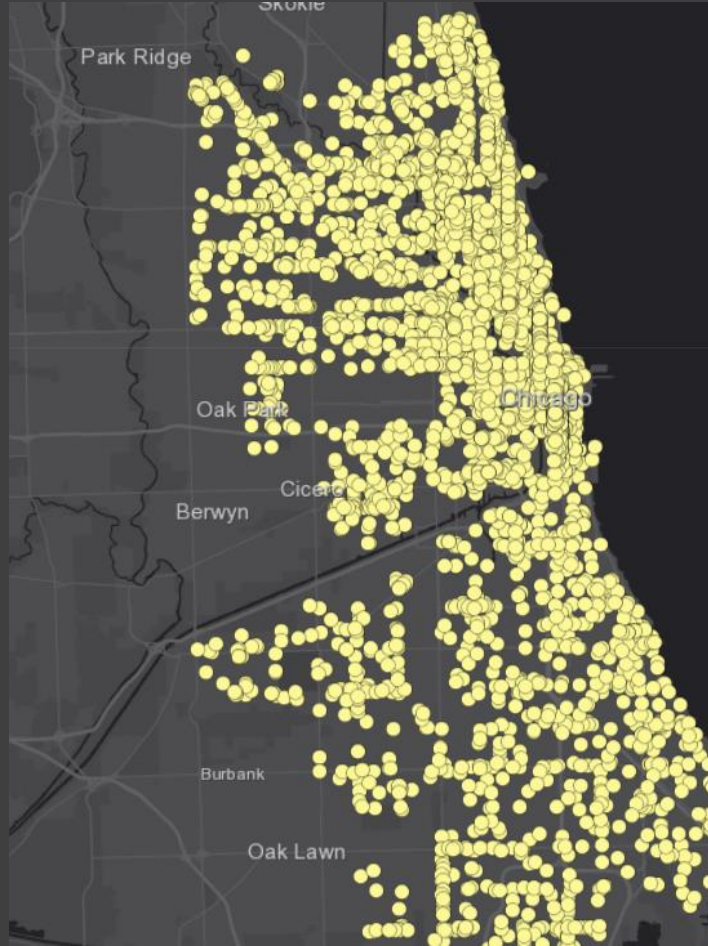
Send me changes for these comma separated events:

☐ Send me everything

Format



Hosted Feature Layer Views



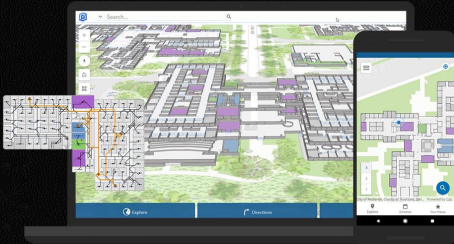
New Applications & Products!

ArcGIS Urban



System for Planning and Managing Urban Development

ArcGIS Indoors



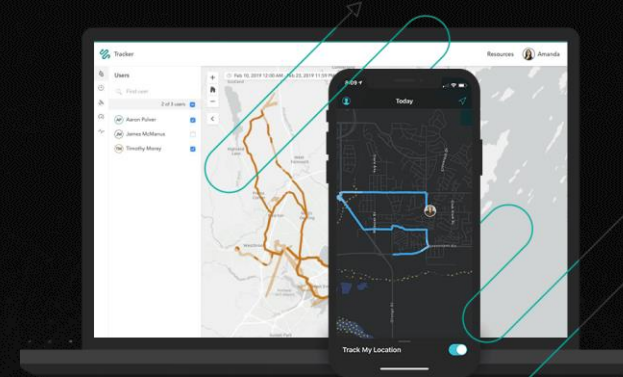
Complete system for indoor mapping used to create a connected workplace

ArcGIS Excalibur



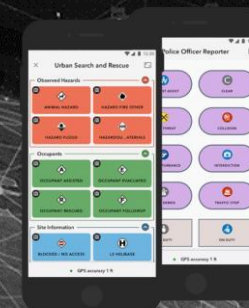
Imagery exploitation and management web application

Tracker for ArcGIS



New mobile and web app for tracking your workforce, improving situational awareness

ArcGIS QuickCapture

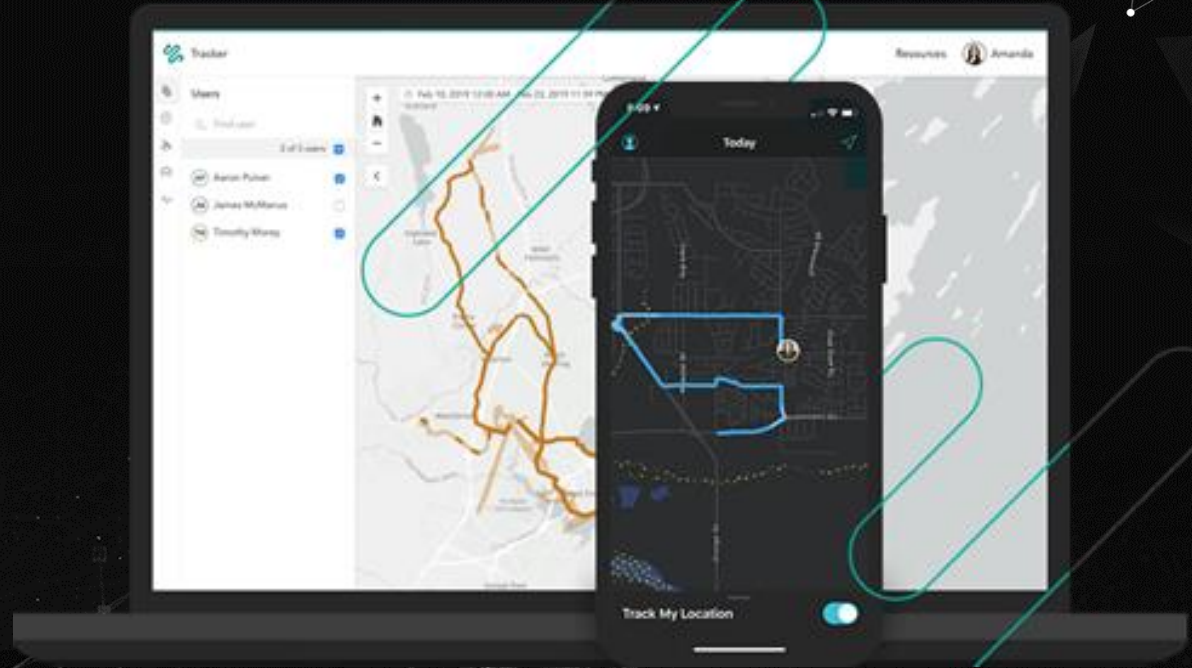


Capture field observations from a single tap on your device

Tracker for ArcGIS

Know what happens in the field

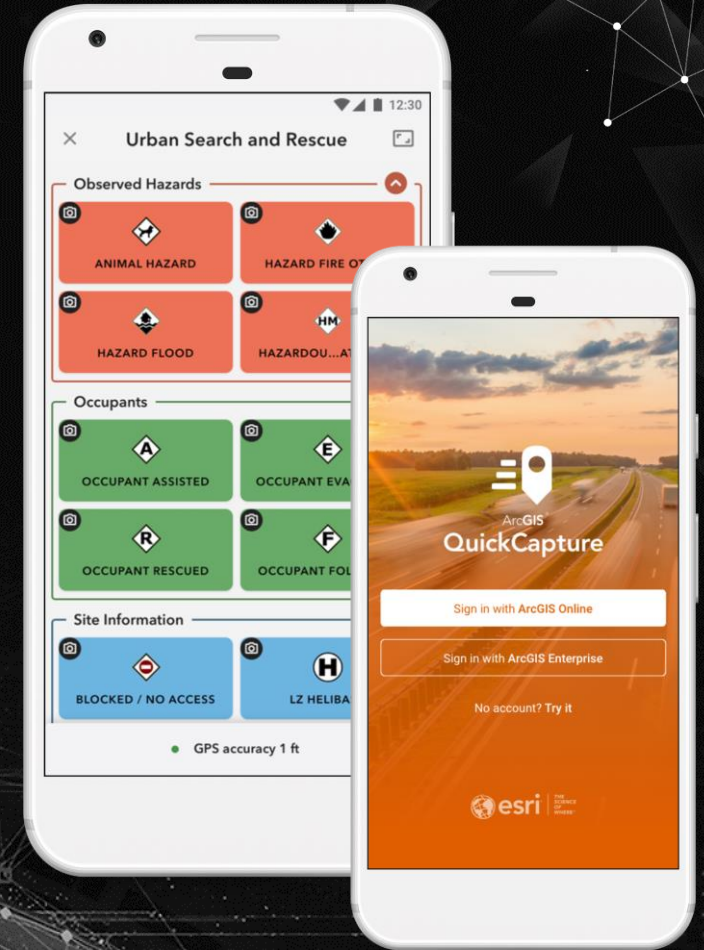
- Share your location
- Know where everyone is
- Detect patterns



ArcGIS QuickCapture

The rapid data collection app

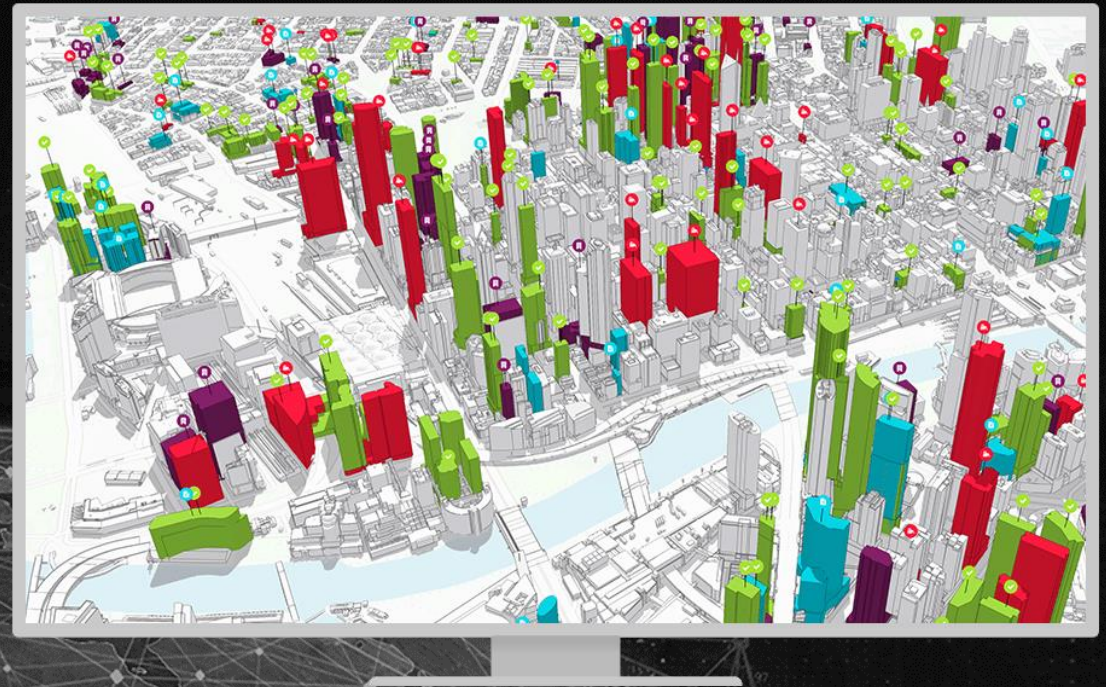
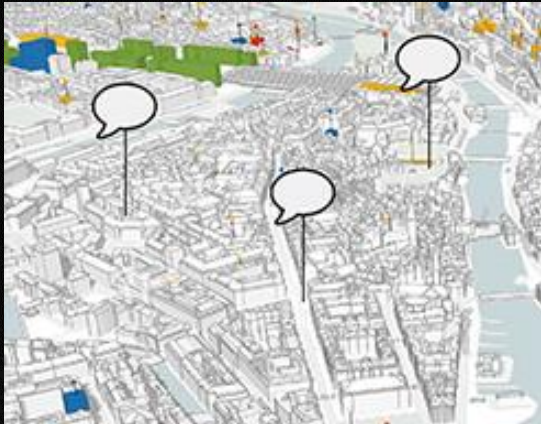
- A “big button” mobile app
- Simplest way to capture field observations
- At-speed data collection workflows



ArcGIS Urban

Modelling and planning system for urban development

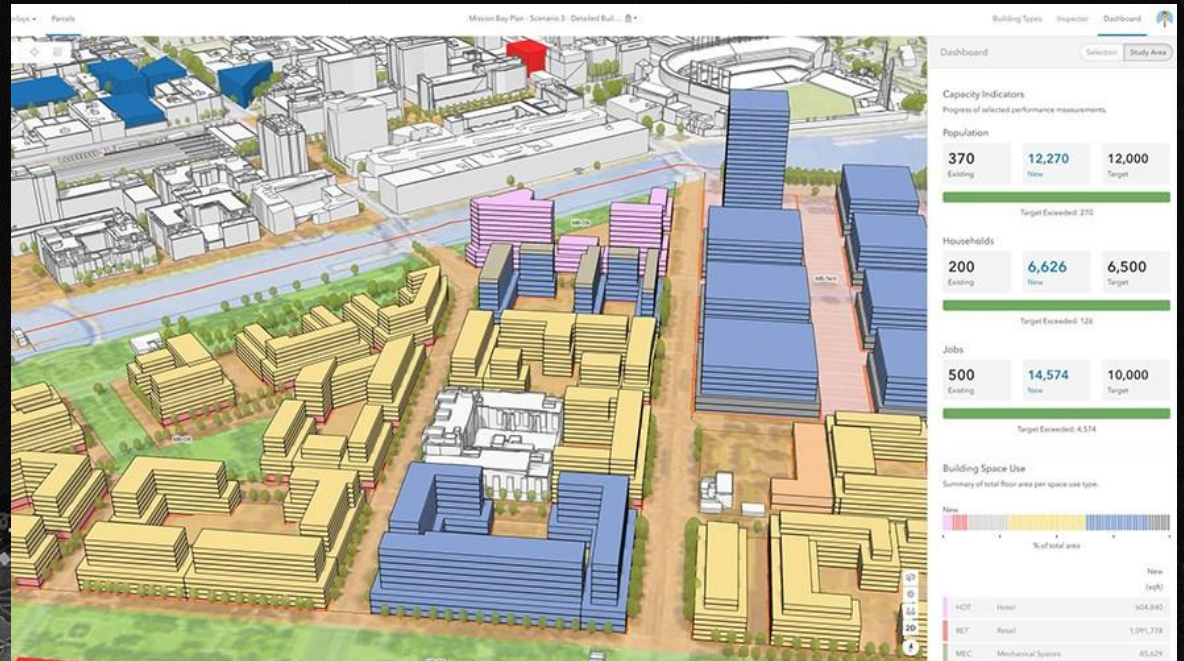
- A 3D model as context for the city
- Zoning and land use planning
- Project status and design review



ArcGIS Urban

A web-based modeling and planning system

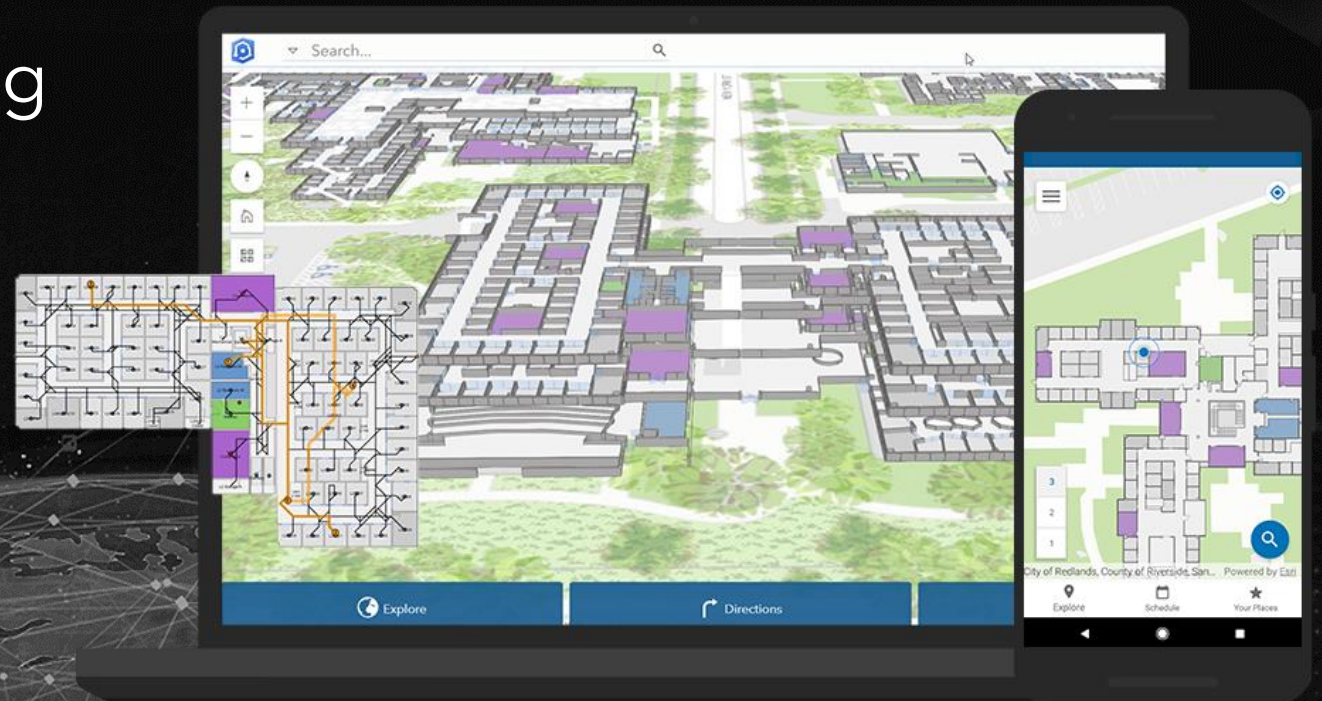
- Create Planning Scenarios
- Track and Evaluate Projects
- Report Indicators



ArcGIS Indoors

System for workplace planning and navigation

- Easily find workplace information
- 2D and 3D maps and visualizations
- Accurate indoor positioning



ArcGIS Excalibur

Imagery exploitation and management web application

- Delivering dynamic web-based imagery workflows
- Web based application in ArcGIS Enterprise & Image Server at 10.7
- Efficient Project Tasking & Management

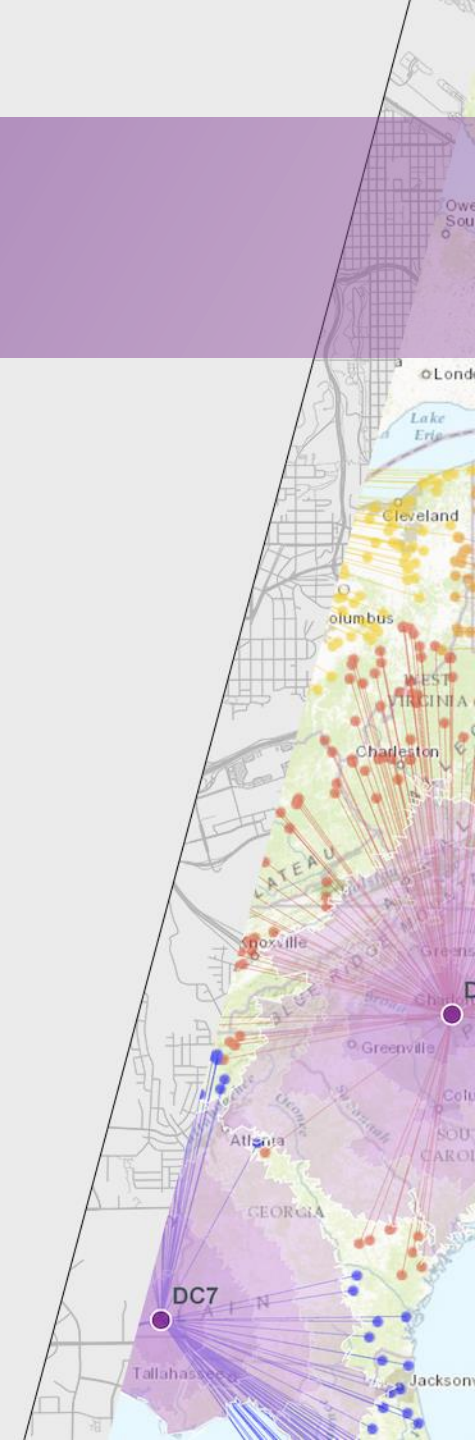


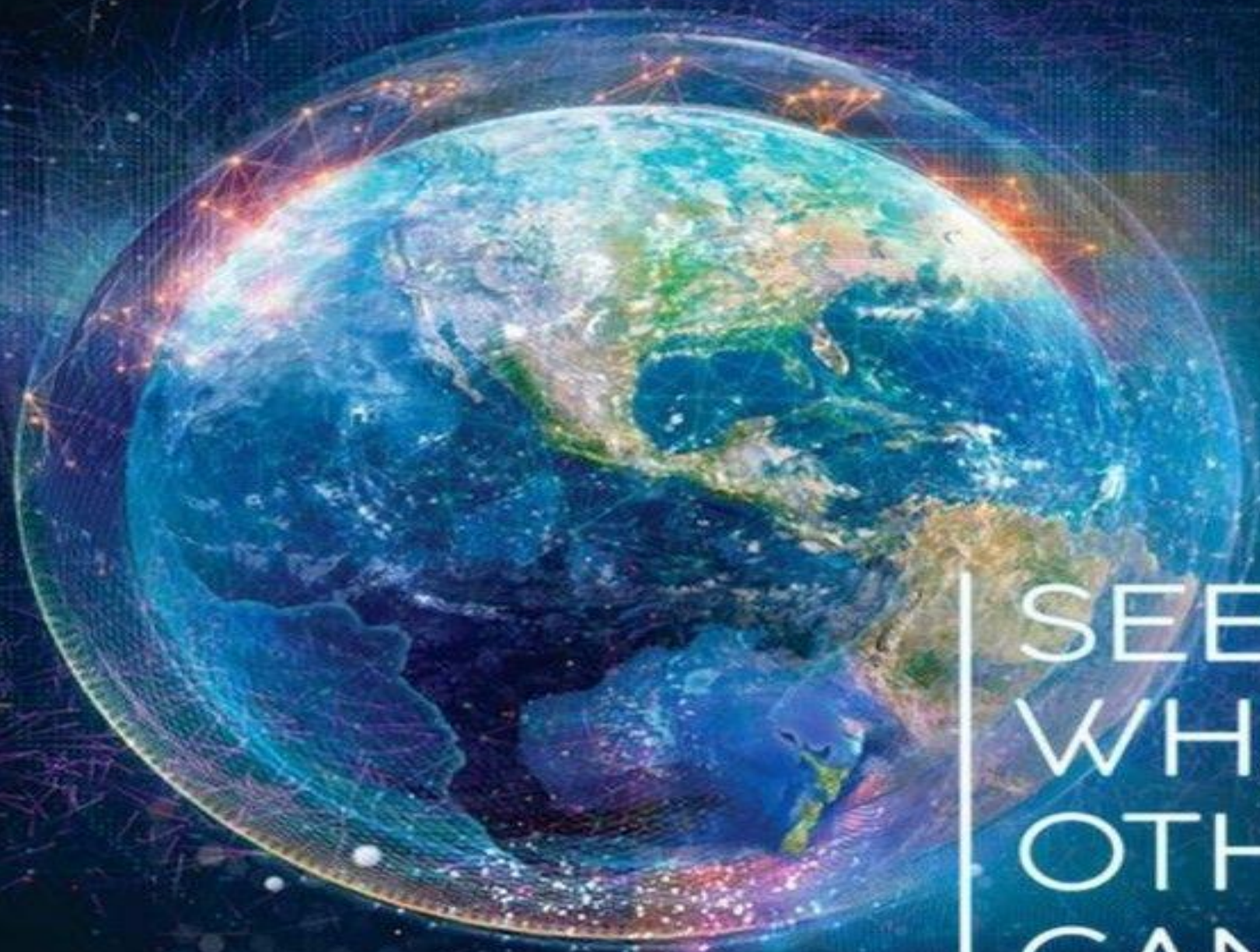
Good-to-Know

Updates and announcements starting at 10.7

- **User Types:** Now license a range of user types to meet your organizational needs: Viewers, Editors, Field Workers, Creators, GIS Professionals
- **TLS:** ArcGIS Enterprise enforces HTTPS Only and TLS version 1.2
ArcGIS Online also only supports TLS 1.2 as of April 2019.
- **Updated product lifecycle:** Short term support (3 years) and long term support (6 years).
 - 10.7 = short term support
 - 10.7.1 = long term support
- **Recorded Esri Tech Sessions Now on YouTube:**
<https://www.youtube.com/watch?v=4UIVIN0G9qk&list=PLaPDDLTCmy4bcqd8fyG4RBCydi-bktLic>

Innovation & Entrepreneurs | 50 years of ArcGIS!





SEE
WHAT
OTHERS
CAN'T

The background is a vibrant, abstract composition of overlapping circles and semi-circles in various shades of purple, blue, teal, and yellow. A large, solid purple rectangle is centered horizontally and vertically, serving as a backdrop for the text. The text "Thank You" is written in a clean, white, sans-serif font, centered within the purple rectangle.

Thank You