

# The Art of Seeing Underground

Texarkana Water Utilities

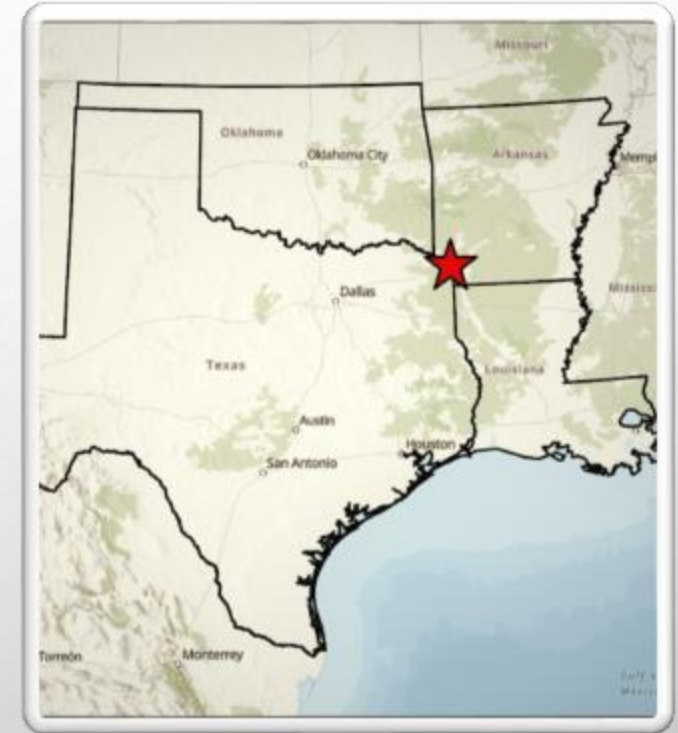
Presented by

Terri Rogers and Bill Moss



# UNDERSTANDING TEXARKANA

- We Are Two Cities
  - Texarkana Arkansas
  - Texarkana Texas
- We Are Two Counties
  - Miller County Arkansas
  - Bowie County Texas
- We Are Two States
  - Arkansas
  - Texas



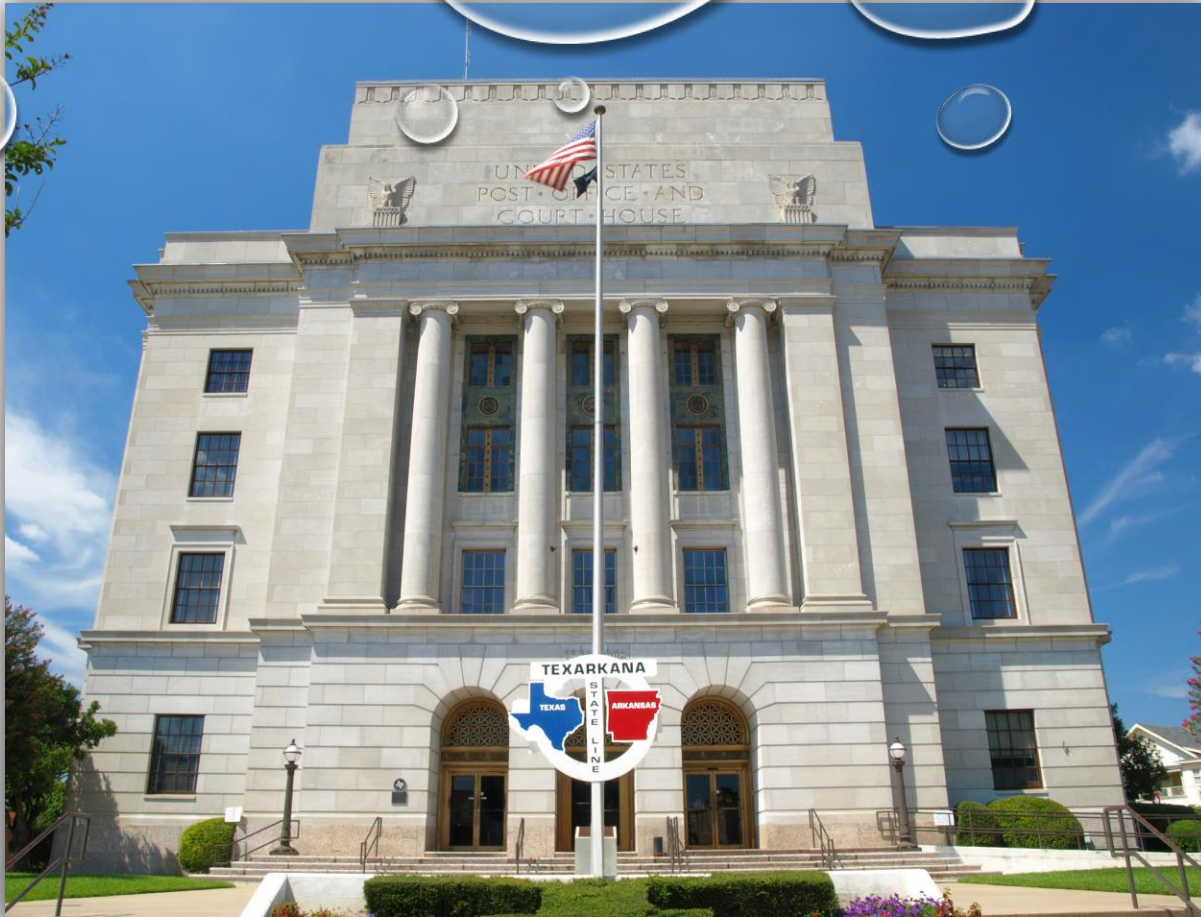


# Twice As Nice *Literally*

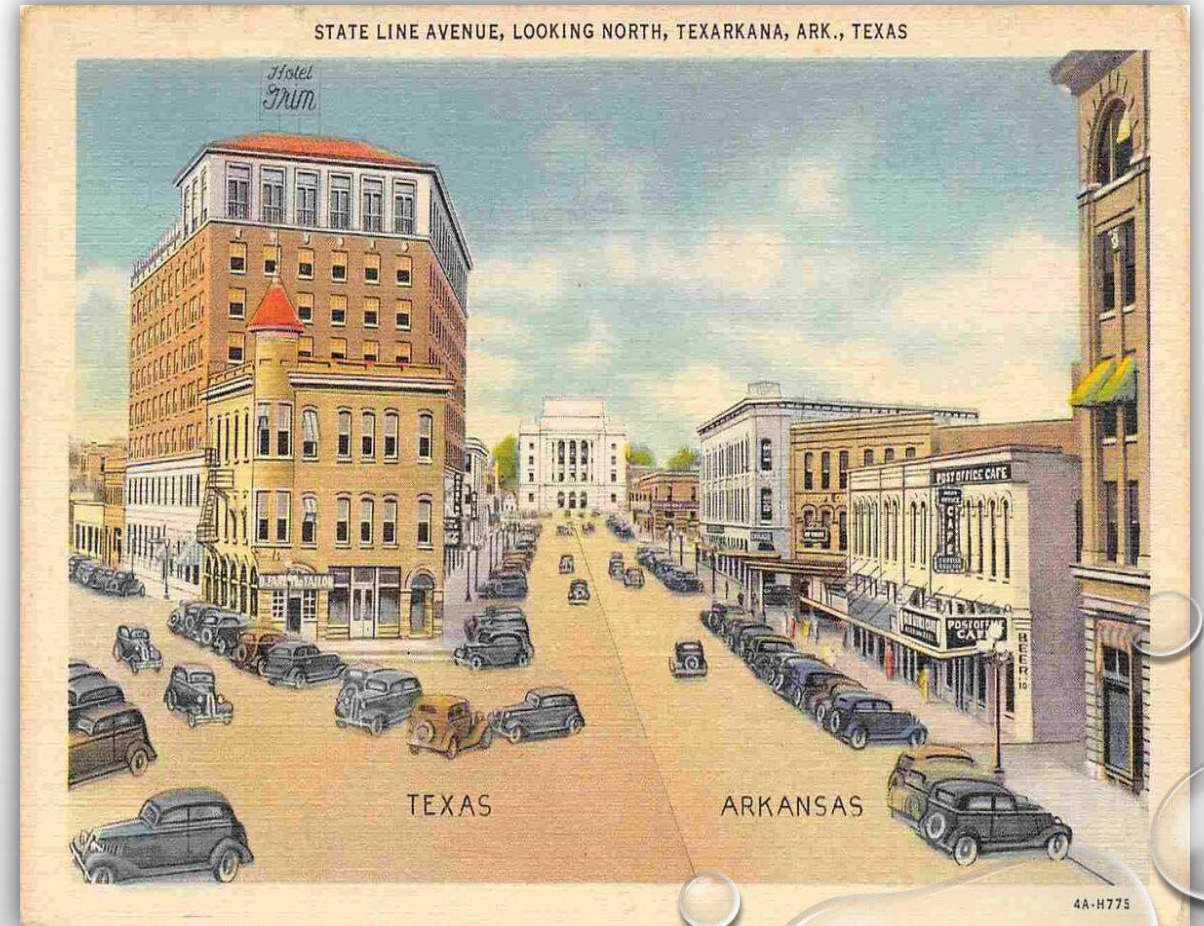
- Water Regulations – Texas Commission Environmental Quality (TCEQ) vs. Arkansas Department Environmental Quality (ADEQ).
- City Government – Council Members vs. Directors
- Land Survey – Headrights vs. Township, Range and Section
- Elections – Polling places vs. Voting Centers
- Data – Texas vs. Arkansas State Plane

*Texarkana's National Humane Alliance Fountain- 1909  
By Hermon Lee Ensign*



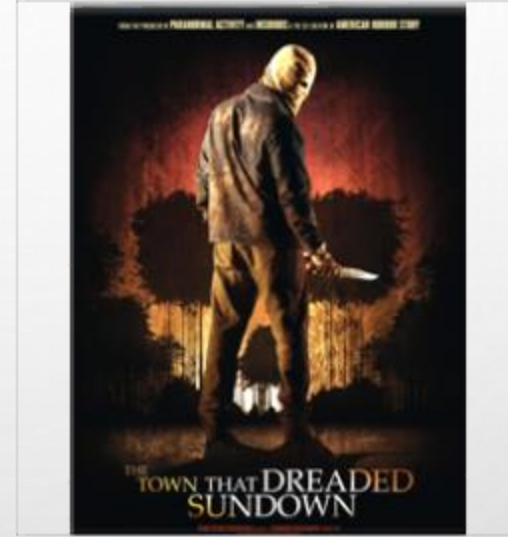
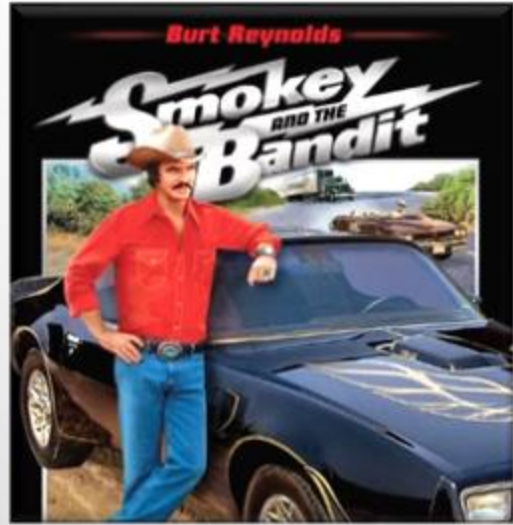


*Second Most Photographed Federal Courthouse*



# What puts Texarkana on the Map





FAMOUS OR *INFAMOUS*





# Texarkana Water Utilities



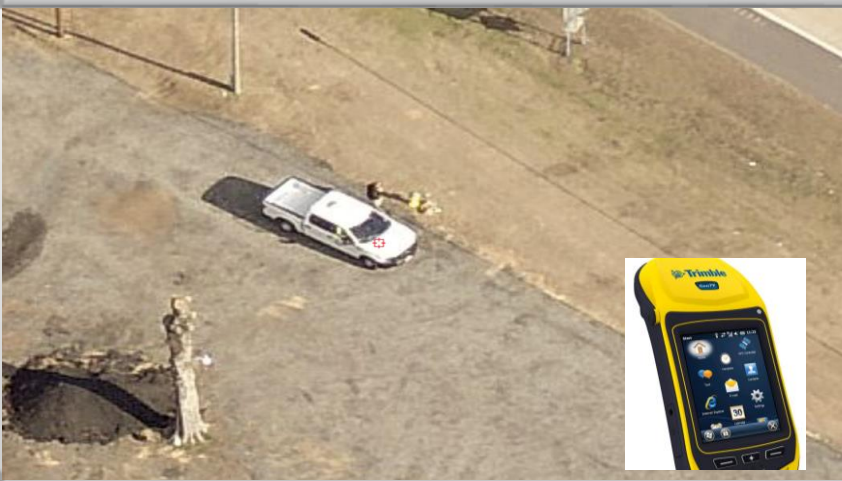


# Texarkana Water Utilities

- Maintain about 915 miles of water mains
- Maintain about 567 miles of sewer mains
- Wholesale water to 11 rural cities
- Provide water to 3 water districts
- We have 2 water resources
- 2 water treatment plants
- 3 waste water treatment plants







# Adding Assets

- Using Aerials to Digitize Data
- Using GPS Data
- Using Georeferencing to Input Data
- Using Field Maps to Collect Data



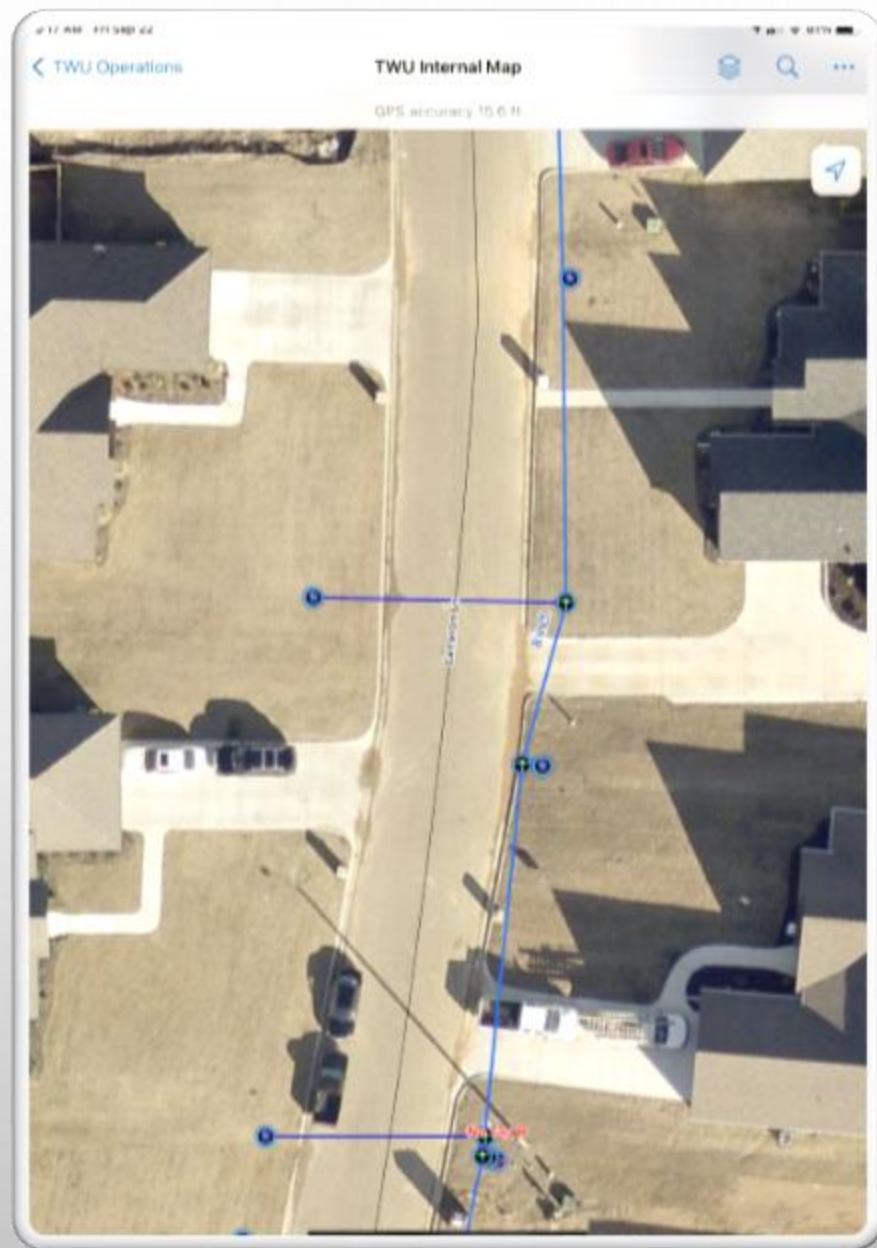


# Locating TWU Assets with Aerial Photography

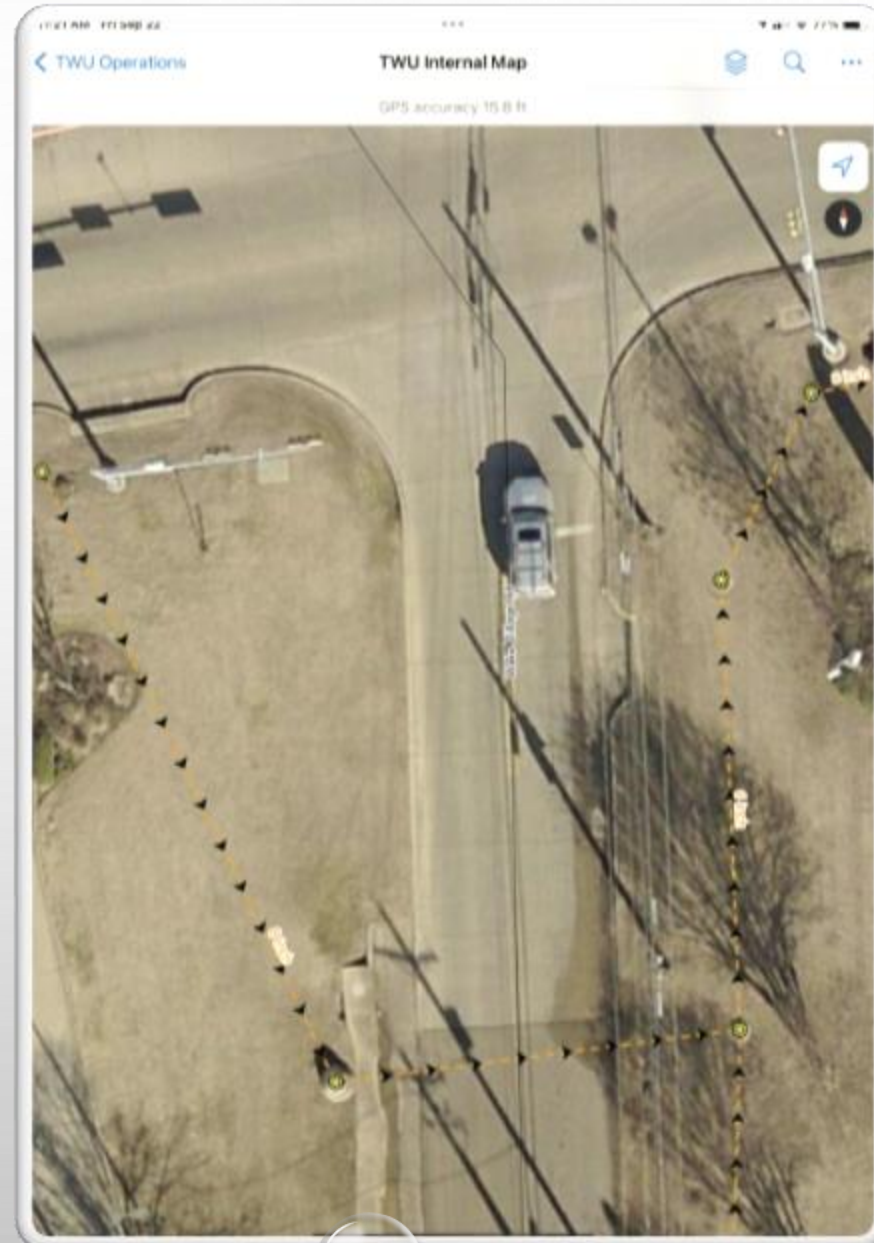
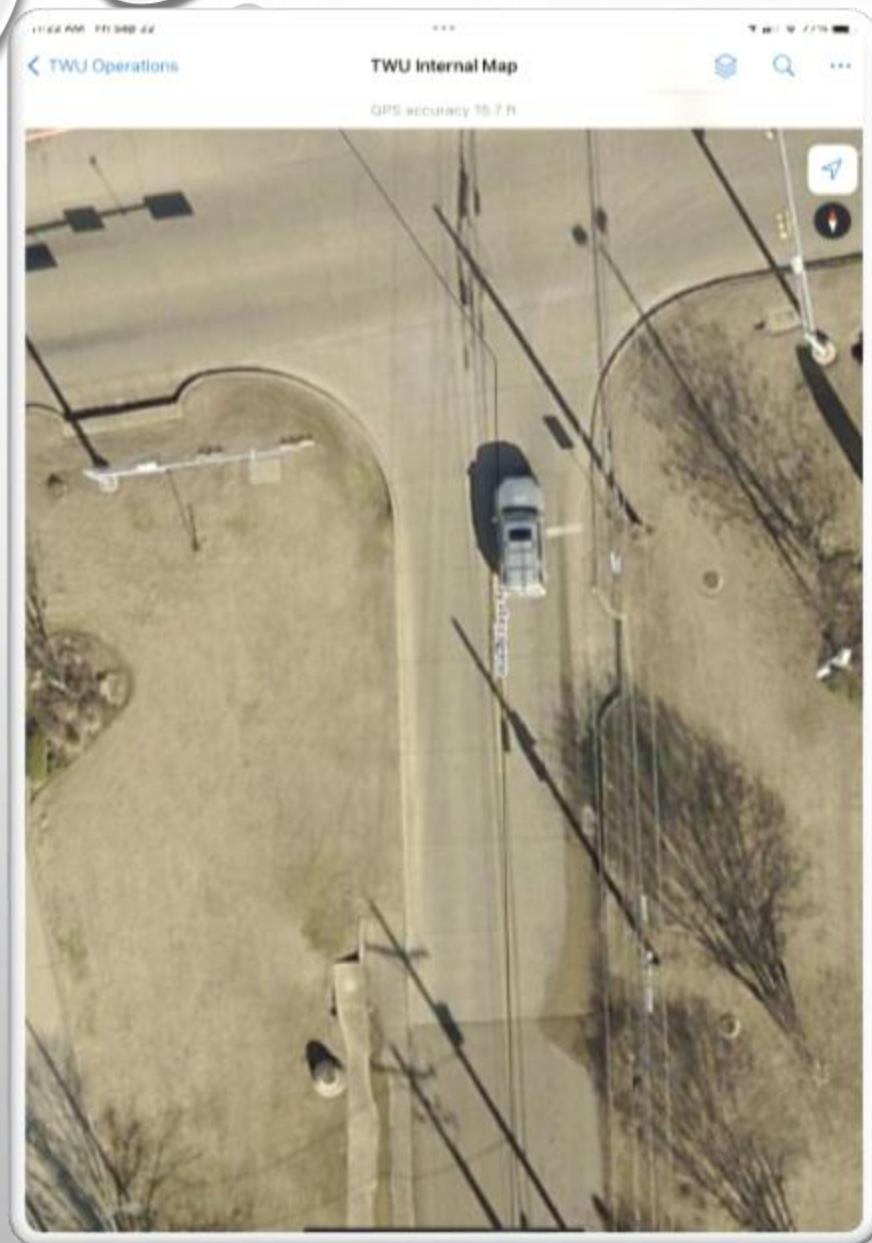
- Types of Assets
  - Meters
  - Hydrants
  - Manholes
  - Valves













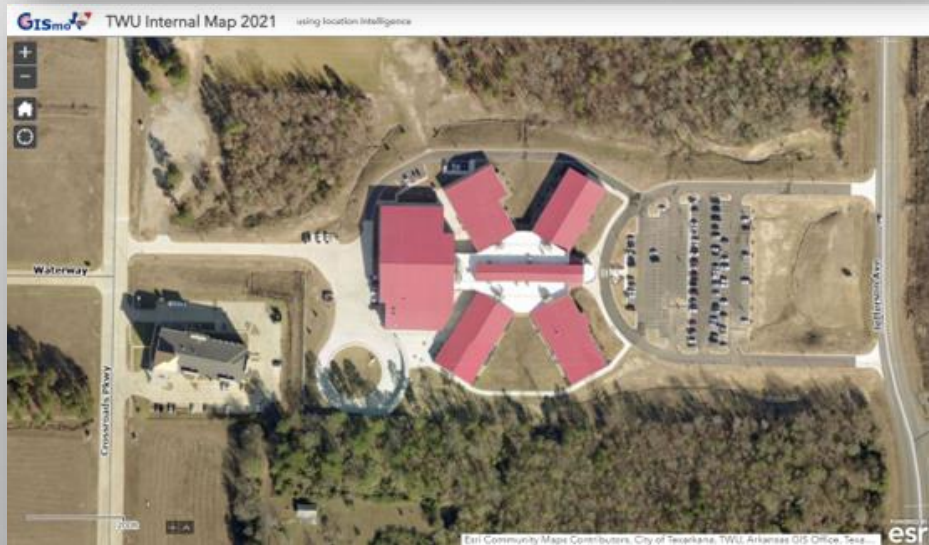
# Field Services

"The GIS aerial photography has been one greatest area of advancement in the field service dept in the last decade. This has truly revolutionized the efficiency of our dept. With the click of a couple keys we can locate any meter and specific details of the location. It's been amazing! "

James Troy Daffern- *Field Services Supervisor*







# Environmental

"I use the aerials to review activities in and around an area. The aerial provides a much more information than a plain map provides. You can see power lines, wooded areas, and other natural features. I also use previous years photos for comparisons."

David Waldroup – *Environmental Engineer*



# Engineering

"We use aerials for all our construction plans and/or work orders that involve water, wastewater, storm water or any other needs that the city or utility deem necessary. We currently also must use aerial imagery for control points for surveying."

Josh Land – *Engineering Technician*







# Operations

"We use aerials from the office to help guys locate meters or addresses that are hard to find by giving them visual landmarks"

Barbara Baker – *Operations Dispatch*



# Water Plant

"Aerial photography allows us every two years to assess the condition of the top of the water tanks, with out the need to climb the tanks and endanger our employees."

Rick Barton – *Water Production  
Plant Manager*







# Customer Service

"Customer service uses aerial footage to confirm structures with customers trying to get services and are unsure of the exact address. Help them pin point meter location (located back of the house by your fence on the left side). Confirm if it's a residential or commercial building and whether or not a structure exists at the address. "

Melissa Shaw – *Customer Service Supervisor*



# CITY OF TEXARKANA



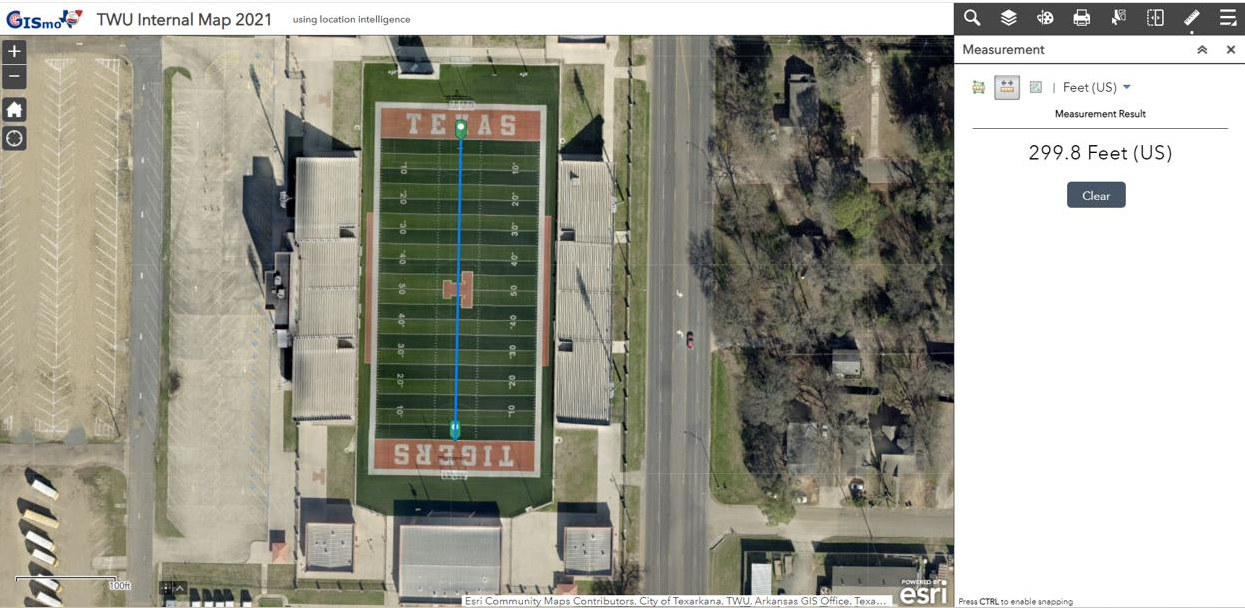




# Cities A-Z

- Addresses
- Building footprints
- Code Enforcement
- City Limits
- Elections
- Fire Department
- Parks
- Planning /Land Use
- Police Department
- Public Works
- Street Centerlines
- Zoning









# THANK YOU

Terri Rogers, GISP

GIS Analyst

[terri.rogers@txkusa.org](mailto:terri.rogers@txkusa.org)

Bill Moss

GIS Technician

[bill.moss@txkusa.org](mailto:bill.moss@txkusa.org)