

Welcome

ArcGIS for Government

Esri Platform Vision



ArcGIS for . . .

New Initiative - Solutions and Communities of Users

Public Safety Planning and Development
Elections Land records Public Works
Water Utilities Military—Maritime Operations
Military—Land Operations
Emergency Management Local Government
National Government State Government
Demographics Intelligence Petroleum
Gas Utility DOT National Guard
Housing Health Telco Ocean Use Planning
Non-Profit and NGOs Facilities Military City

Goals

- **Simplify GIS**
- **Broaden use of GIS throughout organization**
- **Reduce implementation time**
- **Reduce implementation cost**
- **Promote synergy**
 - **Each app works everywhere**
 - **Each map works everywhere**

ArcGIS for Local Government

Focused on Supporting The Business of Government . . .

healthy
communities

quality
education

robust public
services

diverse cultural
opportunities

safe
communities

sustainable
environment

intelligent
planning

thriving
economy



ArcGIS

Empowering the community through a complete system . . .

Easier
More powerful
And everywhere



. . . Supporting effective planning, decision-making and communication

Five Common Business Patterns

Data Management

Planning & Analysis

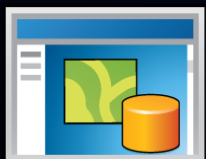
Field Mobility

Operational Awareness

Citizen Engagement

Land Records, Public Safety, Planning, Public Works, Utilities. . .

Managing and distributing authoritative GIS data



Transforming data into actionable information



Getting information into and out of the field



Providing information on the health of an organization



Communicating directly with stakeholders and enlisting their participation



ArcGIS supports your work

Making GIS easier to implement and more effective for government

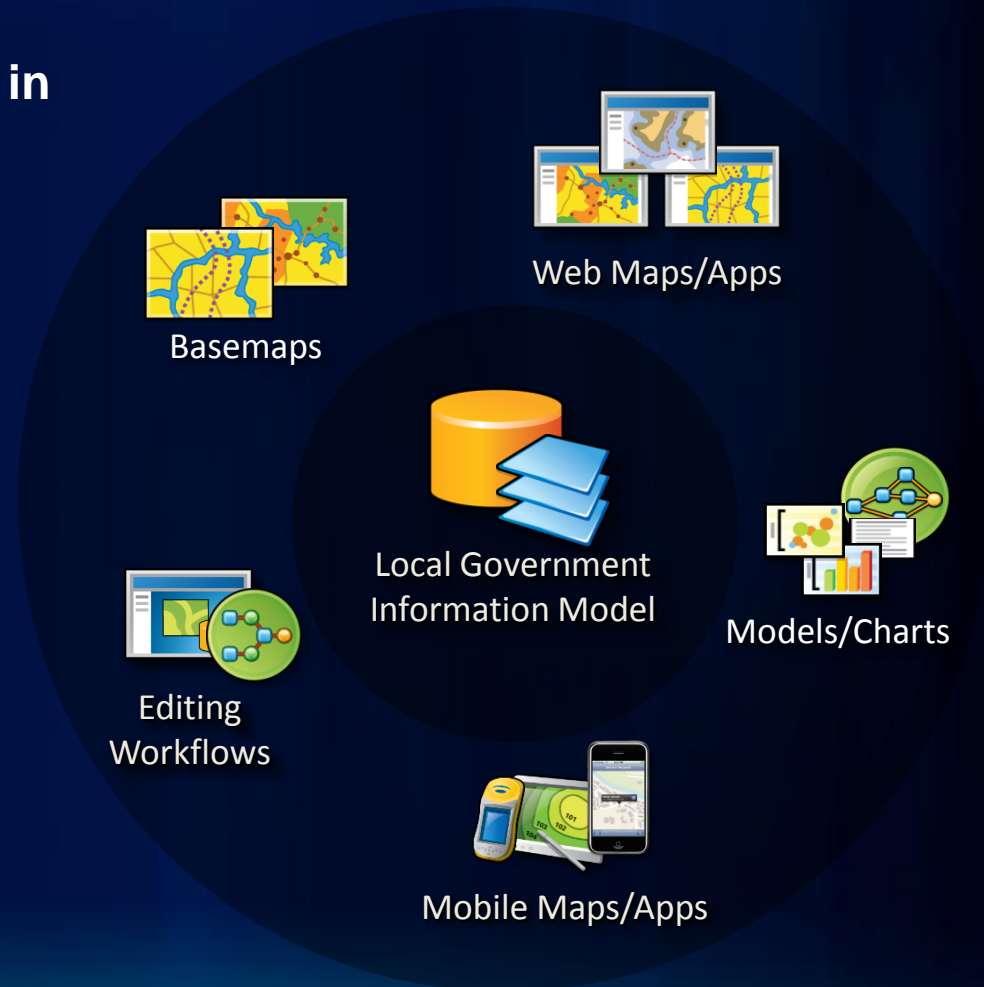
- **Core Technology (ArcGIS)**
- **ArcGIS Online (ArcGIS.com)**
- **Maps and Apps (Templates)**
- **Best Practices (Resource Centers)**

ArcGIS for Local Government

ArcGIS for Local Government

Useful maps and apps that help local governments implement GIS

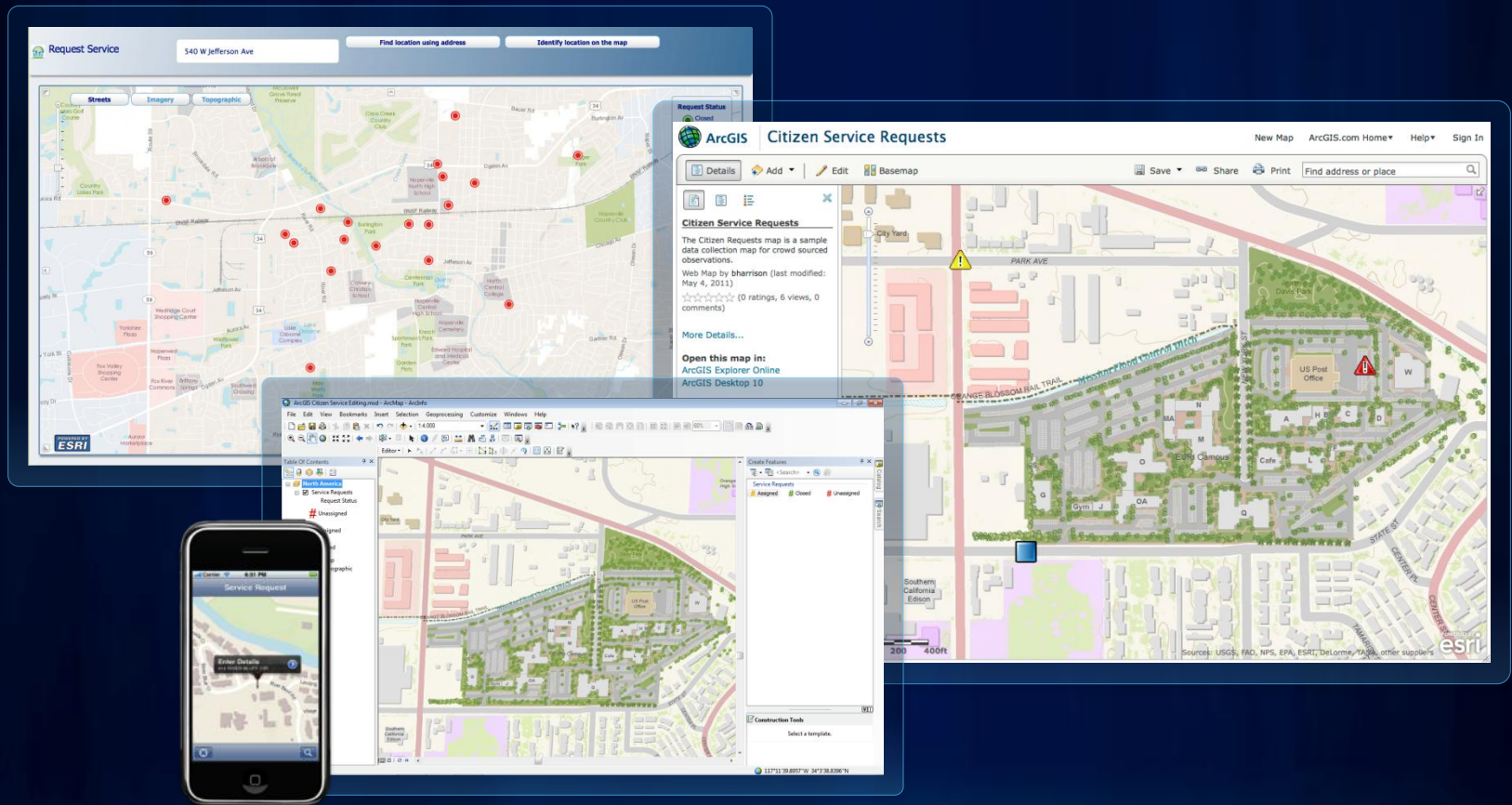
- Organized around the work you do in local government
 - Reference Data / Basemaps
 - Land Records
 - Public Infrastructure
 - Elections
 - Planning
 - Public Safety
 - Public Health
 -
- Extends the ArcGIS platform
- Available for free on ArcGIS.com



...a simple pattern to configure and use ArcGIS

ArcGIS for Local Government

Useful Apps and Maps



... Designed for Local Governments

Local Government Resource Center

An online community for Local Government users and partners

The collage displays four screenshots of the ArcGIS Local Government Resource Center website. The top-left screenshot shows the 'ArcGIS for Local Government' landing page, featuring a navigation bar with links to 'GALLERY', 'MAP', 'GROUPS', 'MY CONTENT', and a search bar. Below the navigation bar, there is a section titled 'ArcGIS for Local Government' with a welcome message and a list of resources. The top-right screenshot shows the 'ESRI Local Government Blog' with a post titled 'New Tax Parcel Map Book Template helps produce map atlases effortlessly'. The bottom-left screenshot shows the 'Local Government' page, which includes a sidebar menu with links to 'Local Government', 'Infrastructure', 'Land Records', 'Elections', 'Planning & Development', 'Public Safety', 'Basemaps', 'Local Government Blog', 'Local Government Gallery', 'Forums', 'Videos', and 'Ideas'. The main content area on this page provides information about the Local Government Resource Center and lists recent blog posts. The bottom-right screenshot shows a map application interface with a street map and a sidebar.

<http://resources.arcgis.com/content/local-government>

ArcGIS for Local Government

**Getting Started
Is Easy . . .**

Identify Business Priorities

Define Business Requirements

Migrate Data To LG Information Model

Publish Your Maps

Configure & Deploy Apps

. . . and Esri & Partners Can Assist!

Goals

- **Simplify GIS**
- **Broaden use of GIS throughout organization**
- **Reduce implementation time**
- **Reduce implementation cost**
- **Promote synergy**
 - **Each app works everywhere**
 - **Each map works everywhere**



esri