

Community Maps Program News

Update, March 2012

Gary Scoffield



Agenda

- **Program Status**
- **New and Changing Maps**
- **Evolution of Community Maps Processing**

Community Maps Program Overview

- Community Maps Program is in its 3rd year
- Suite of cloud-based maps at global to local scales
- Provides a useful collection of basemaps to serve as foundation for GIS maps and apps
- Image cache format for quick, consistent mapping on all platforms
- Content drawn from commercial sources supplemented by authoritative data from government GIS agencies
- An integral part of ArcGIS online
- NOT a data portal: no vector data can be discovered and downloaded

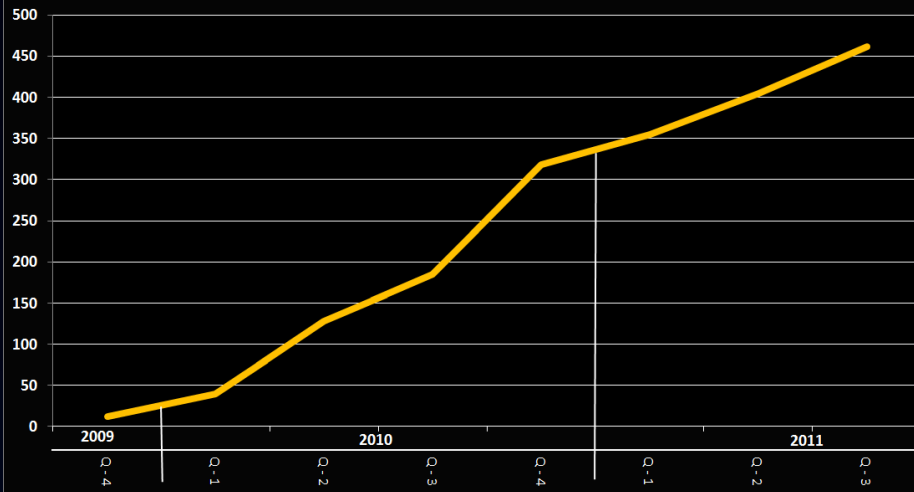
Program success so far

Program Totals (*March 2012*)

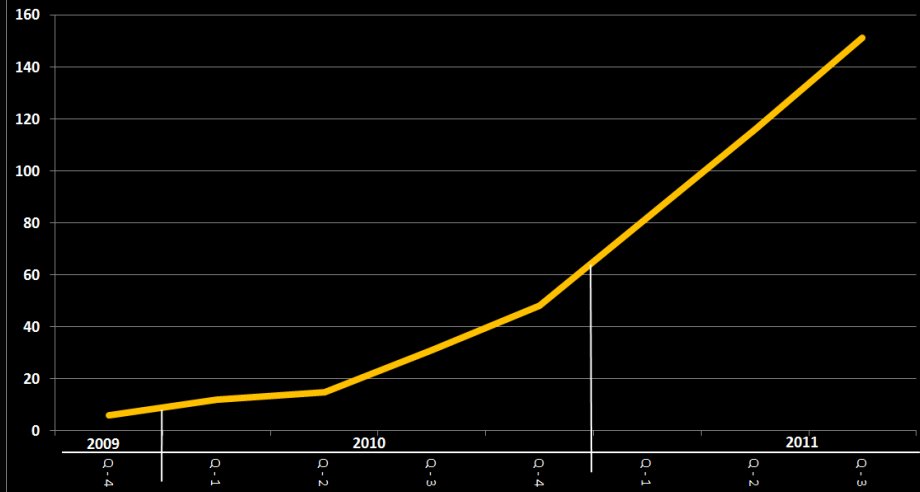
- 208 published maps
- 350 more in production

And Growing!!

Community Maps Participation



Community Maps Publication



Community Maps Team(s)

Product Management

- Don Cooke – Product Manager - Community Maps
- Deane Kensok – Manager - ArcGIS Online
- Christophe Charpentier – Manager – Data & Content

Professional Services:

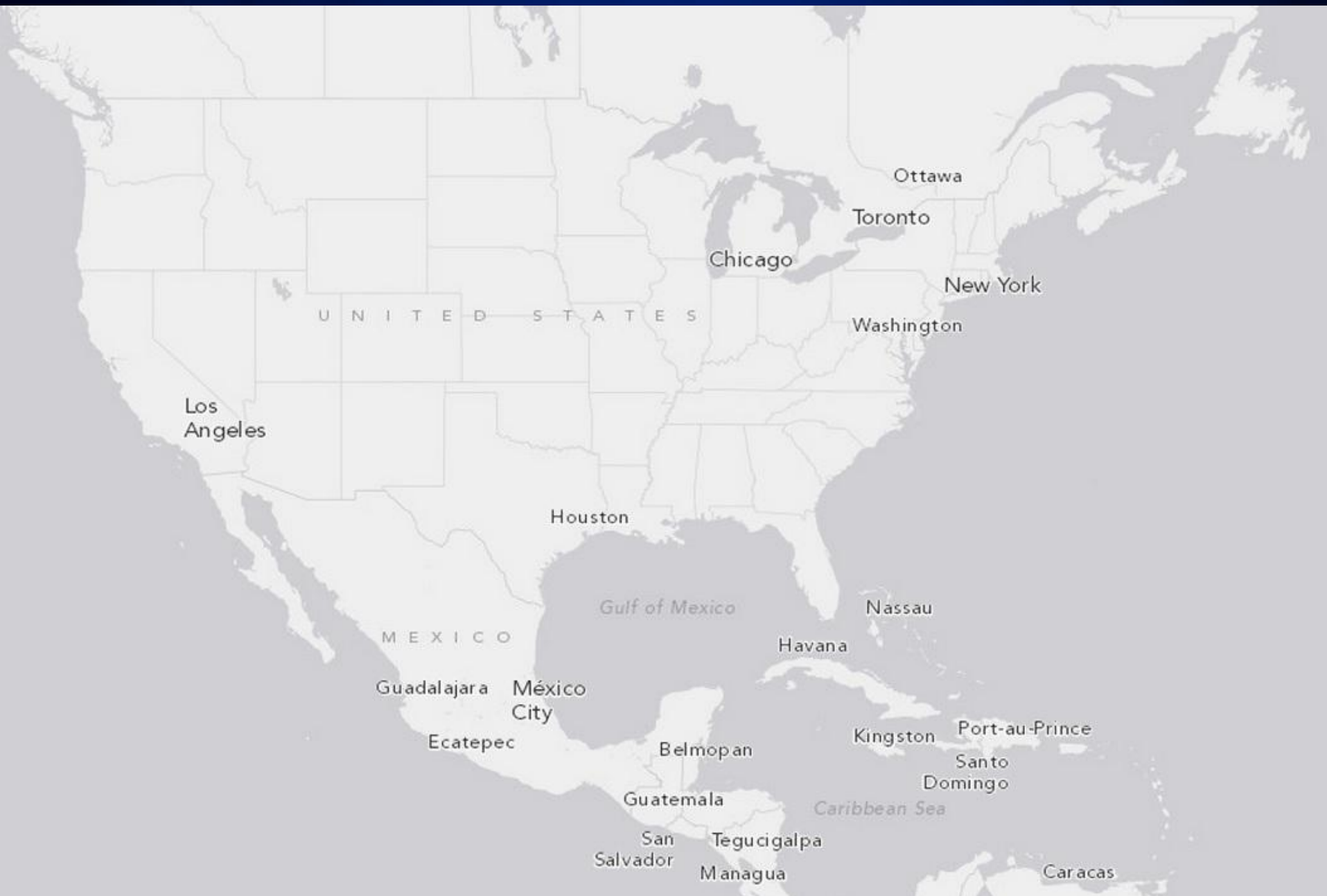
- Seth Sarakaitis - CM Team Lead
- Tiffany Cronin– Production/QA Lead
- Brian Sims - CM 2.0 PM
- Mark Stewart– CM Training PM

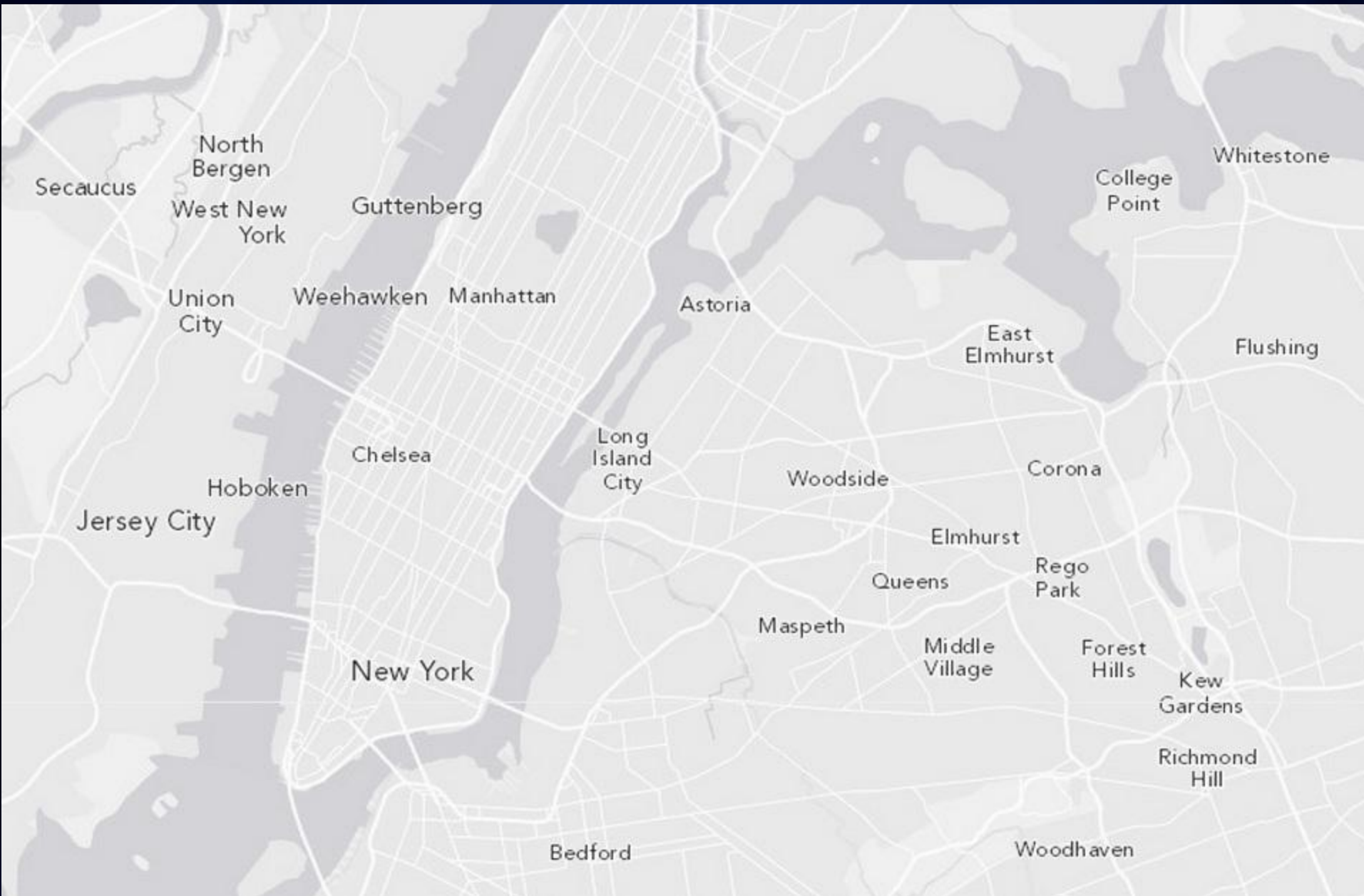
Agenda

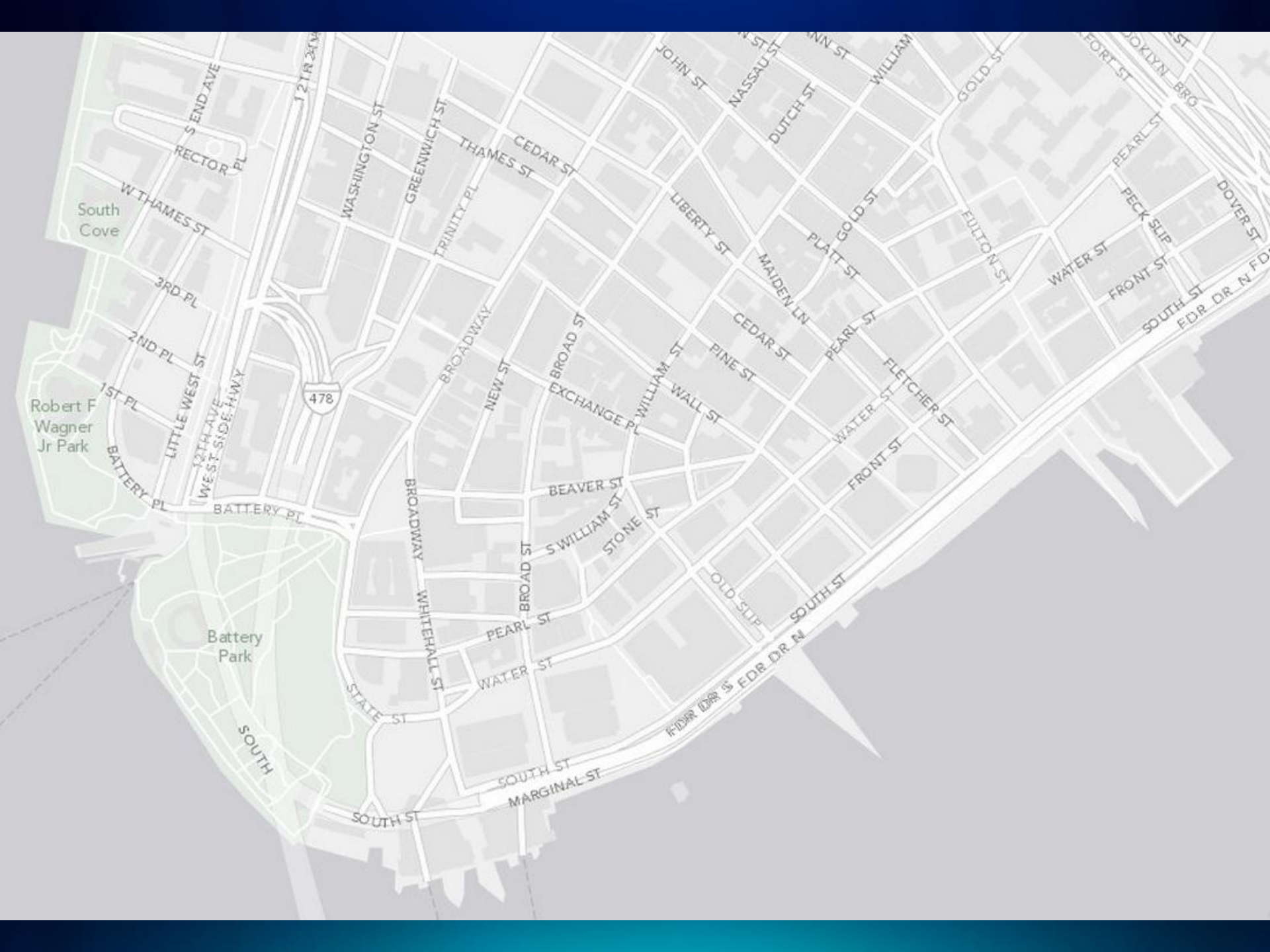
- Program Status
- **New and Changing Maps**

New and Changing Maps

- New Light-Gray “Canvas” Map

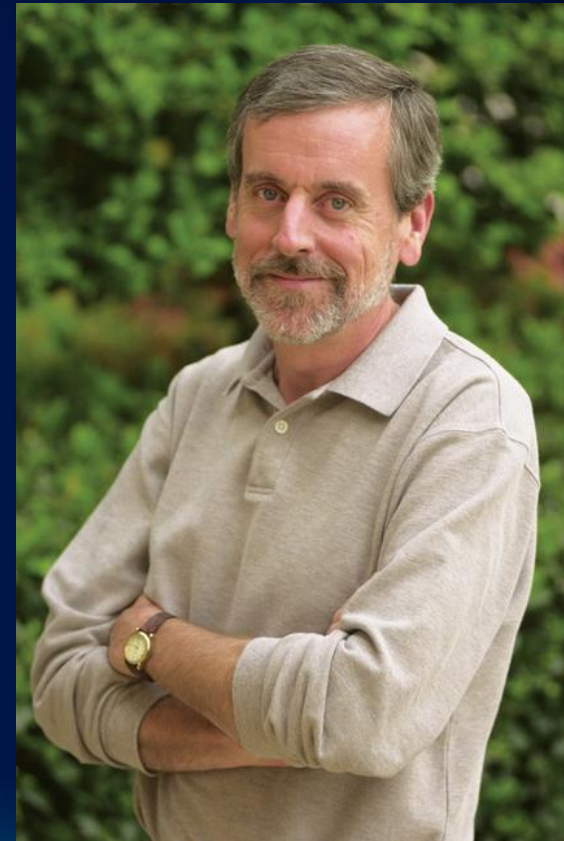






New and Changing Maps

- New Light-Gray “Canvas” Map
- New National-Geographic Styled Map



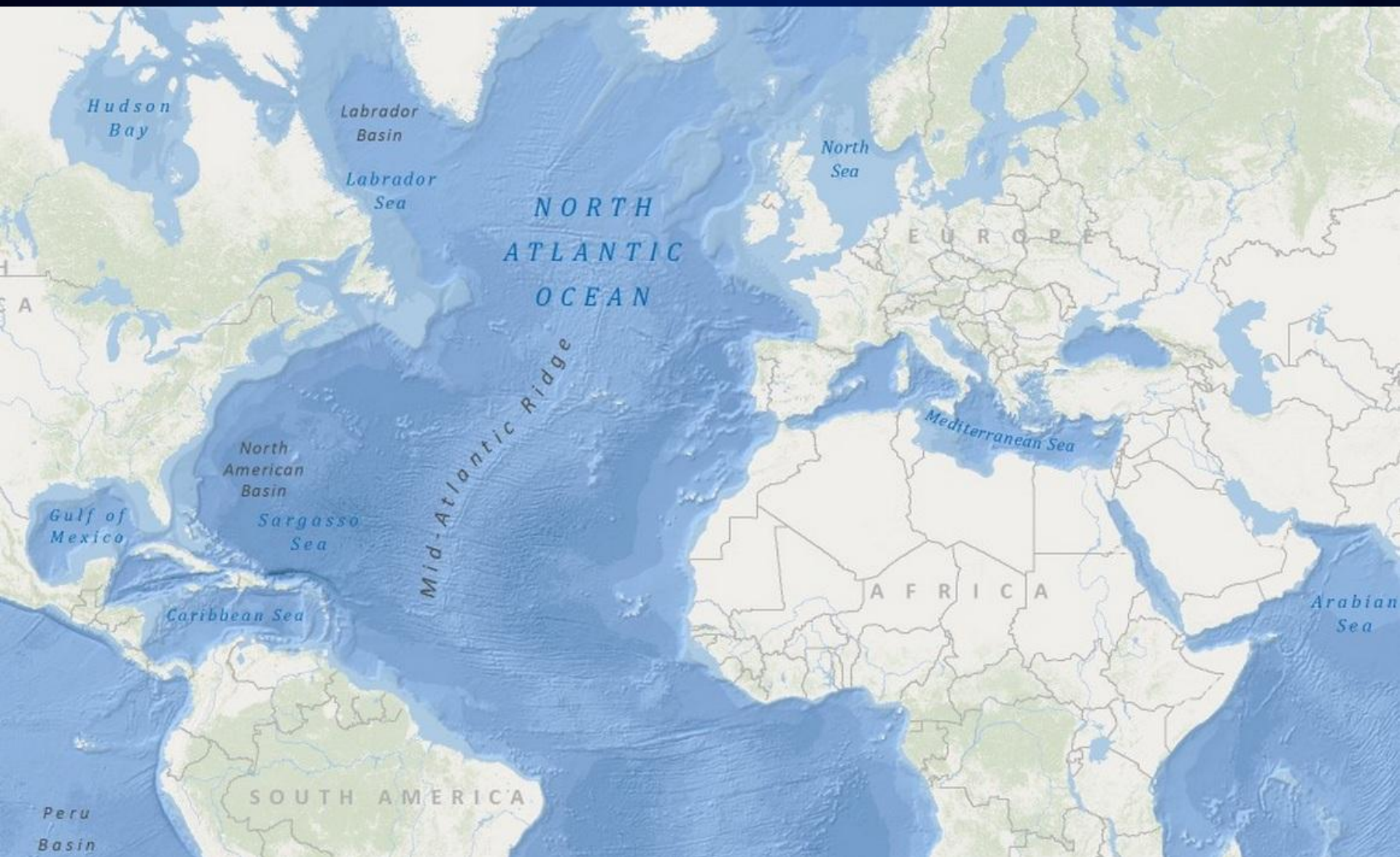


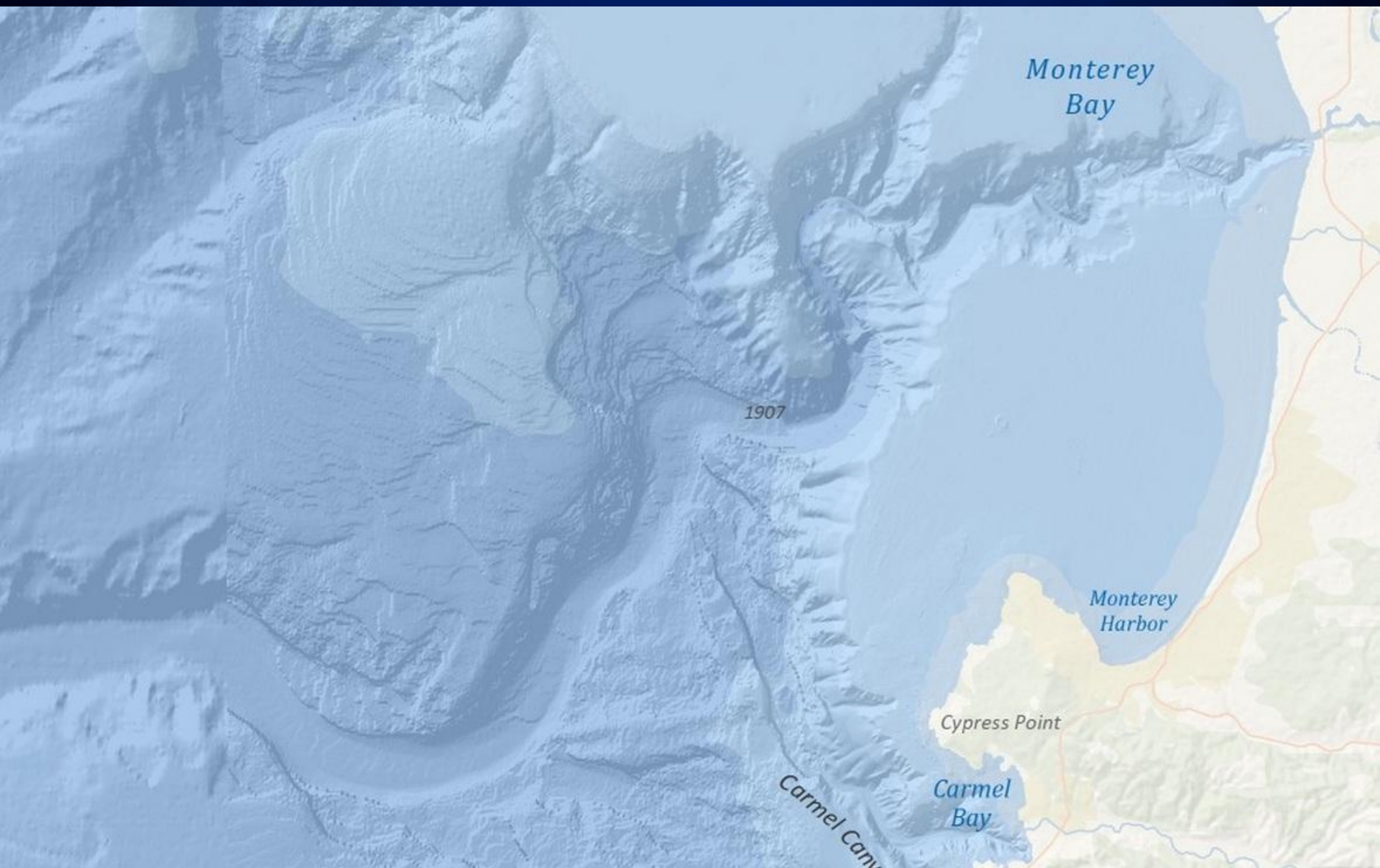


New and Changing Maps

- New Light-Gray “Canvas” Map
- New National-Geographic Styled Map
- New Oceans Basemap

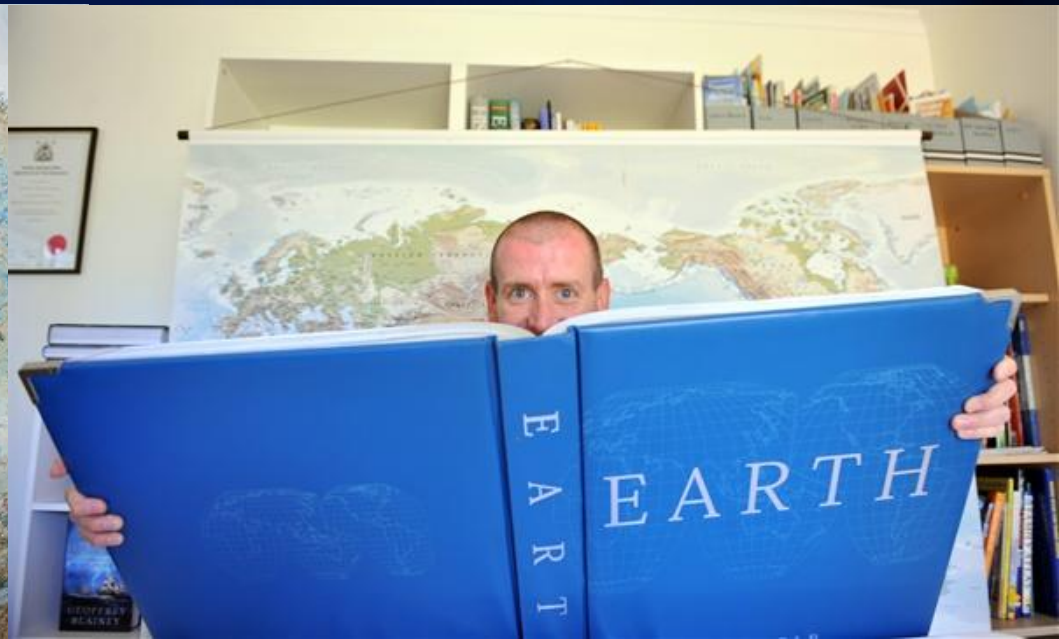






New and Changing Maps

- New Light-Gray “Canvas” Map
- New National-Geographic Styled Map
- New Oceans Basemap
- New World Topographic Map Design (provisional)



Design Objectives

Maintain the 'look and feel'
of a traditional
topographic map

A functional and simple
design that can be
implemented by our
community of contributors

Compliment Esri's
existing suite of
basemaps

Limit the number of
changes as the scale
increase

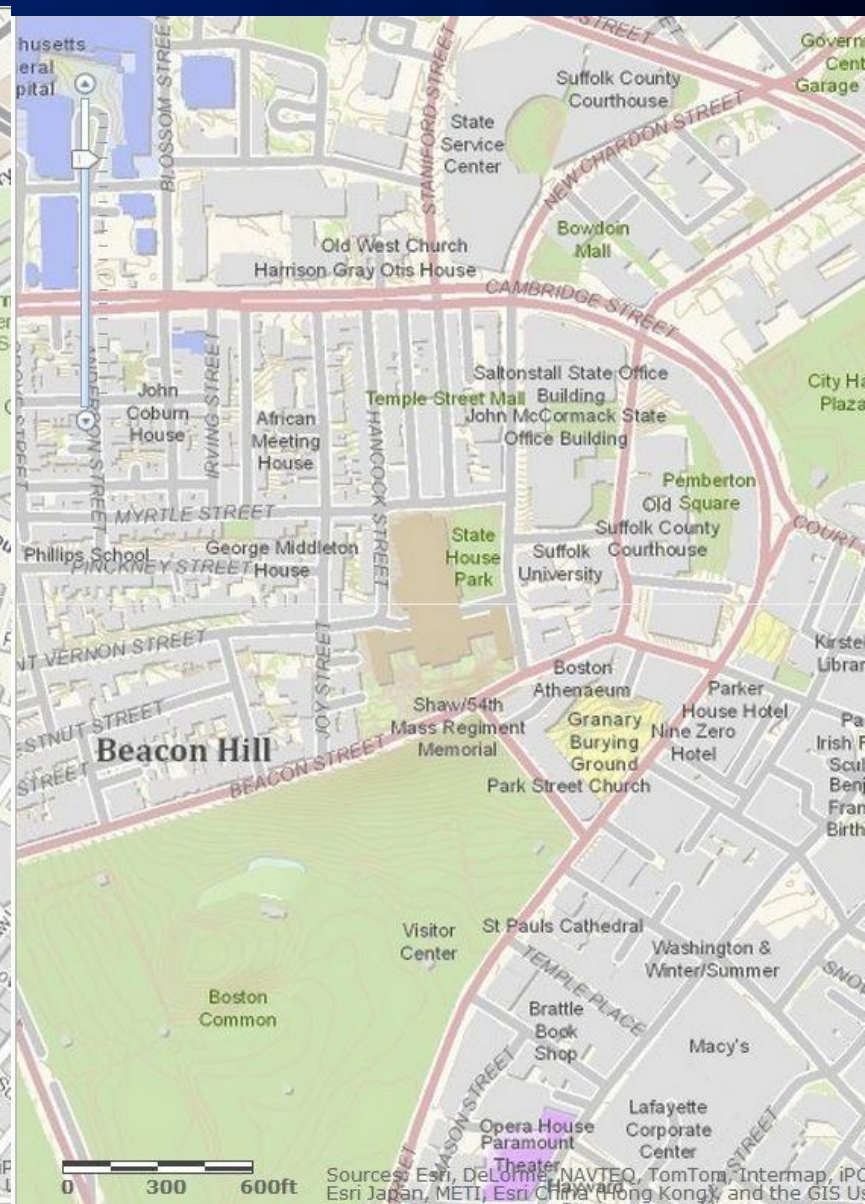
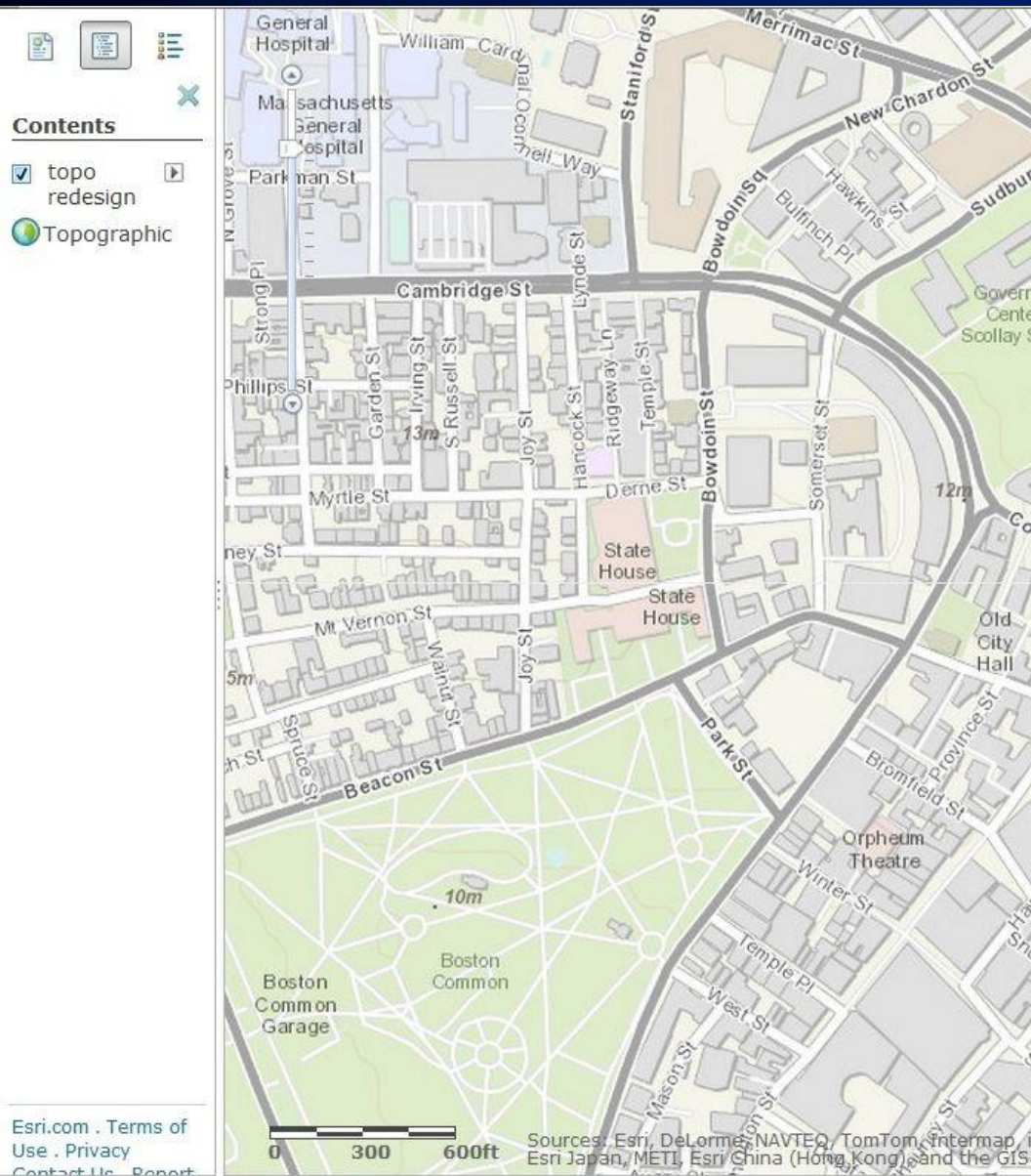
Respect and maintain
characteristics of the
current design

Bottom line –
the design MUST look great!



New

Old



Boston: 1:9000

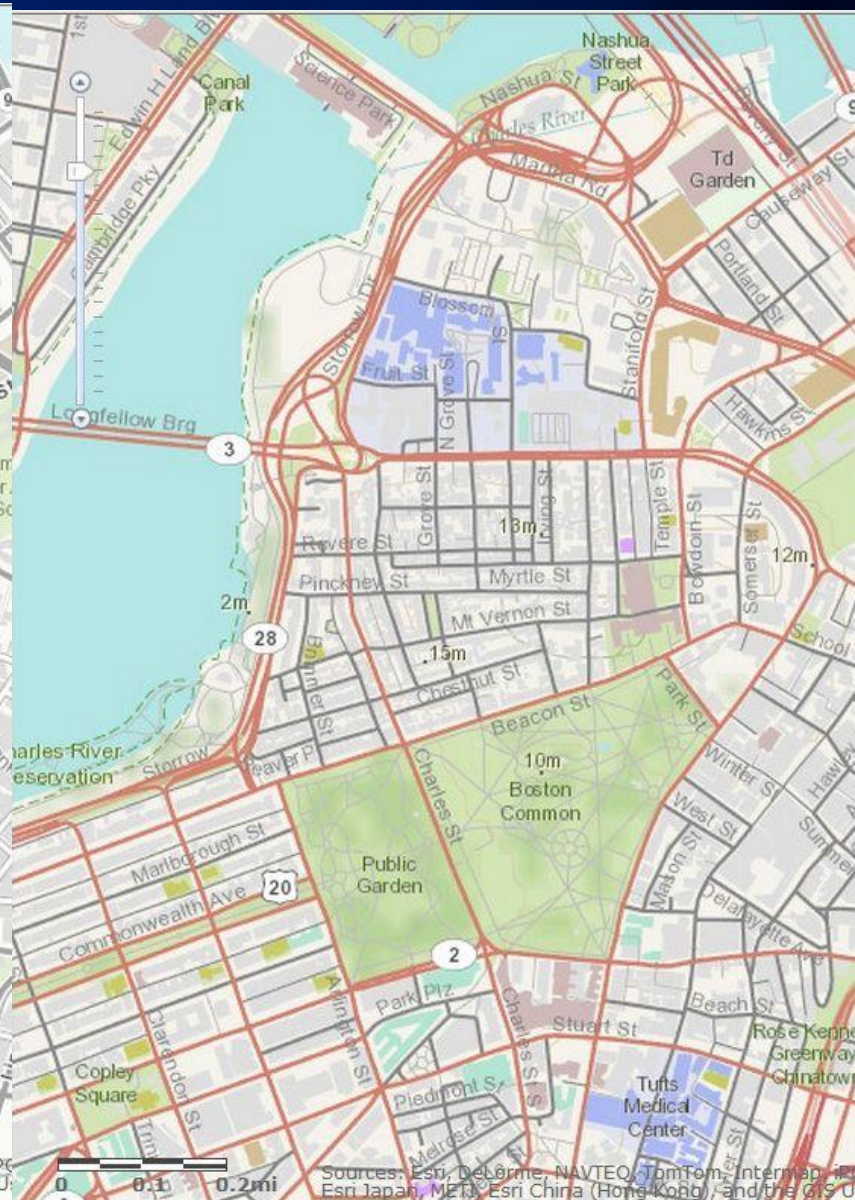
New

Old

Contents

- ☒ topo
- ☐ redesign
- ☒ Topographic

Esri.com . Terms of Use . Privacy . Contact Us . Report



Boston: 1:18,000

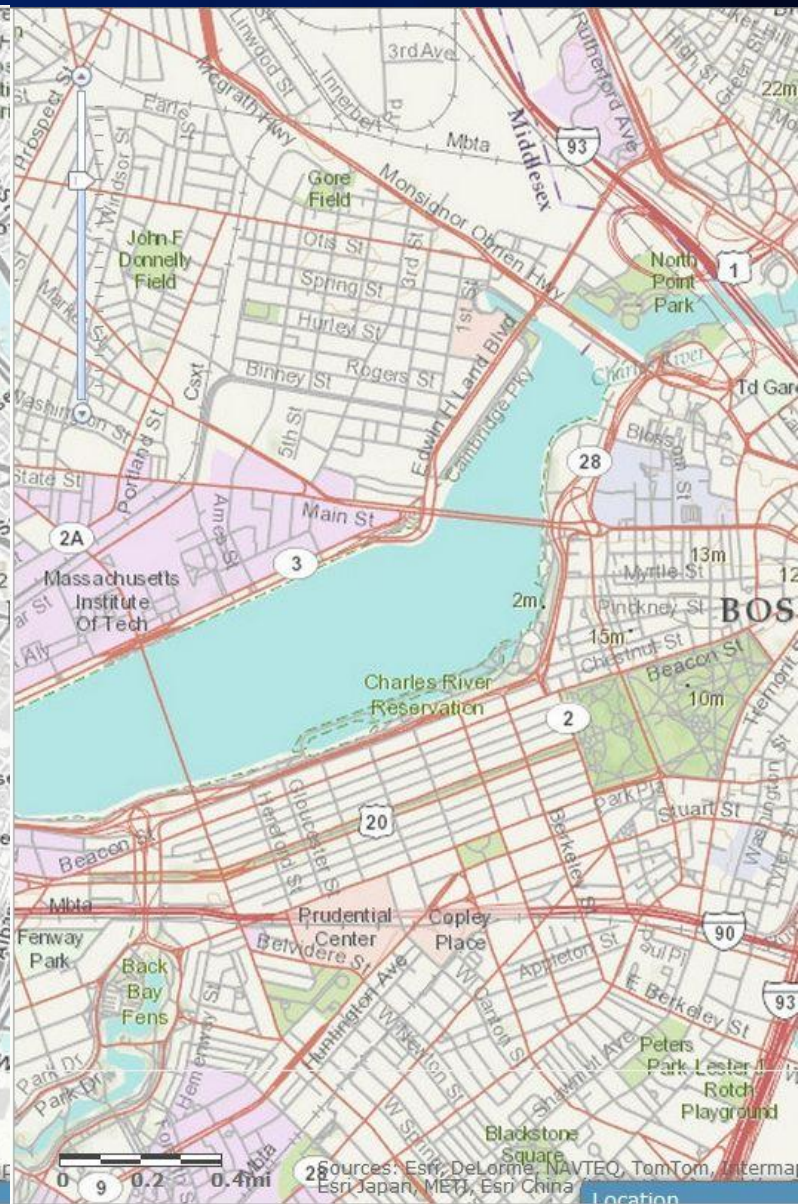
New

Old

Contents

- ☒ topo redesign
- ☐ Topographic

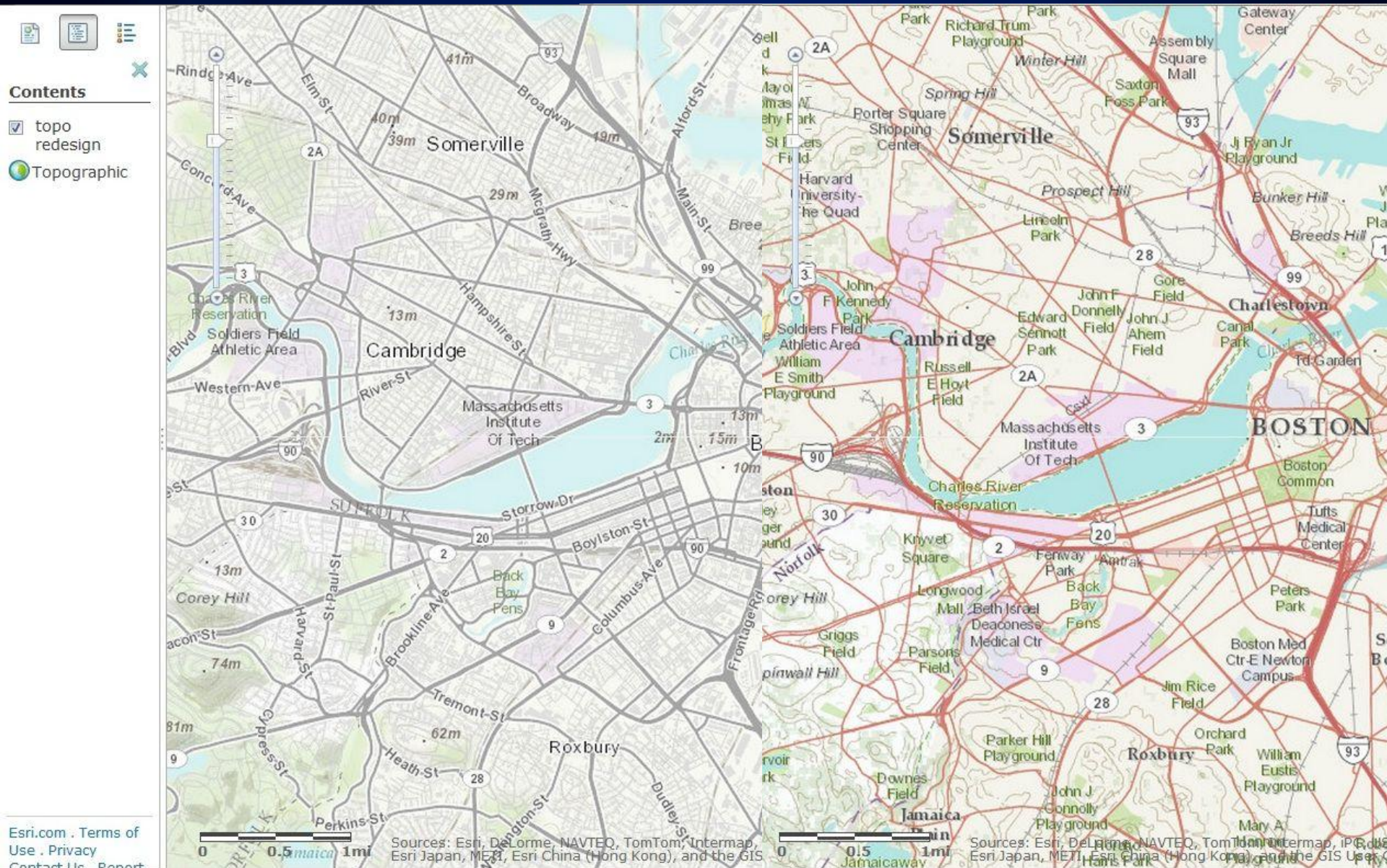
Esri.com . Terms of Use . Privacy . Contact Us . Report



Boston: 1:36,000

New

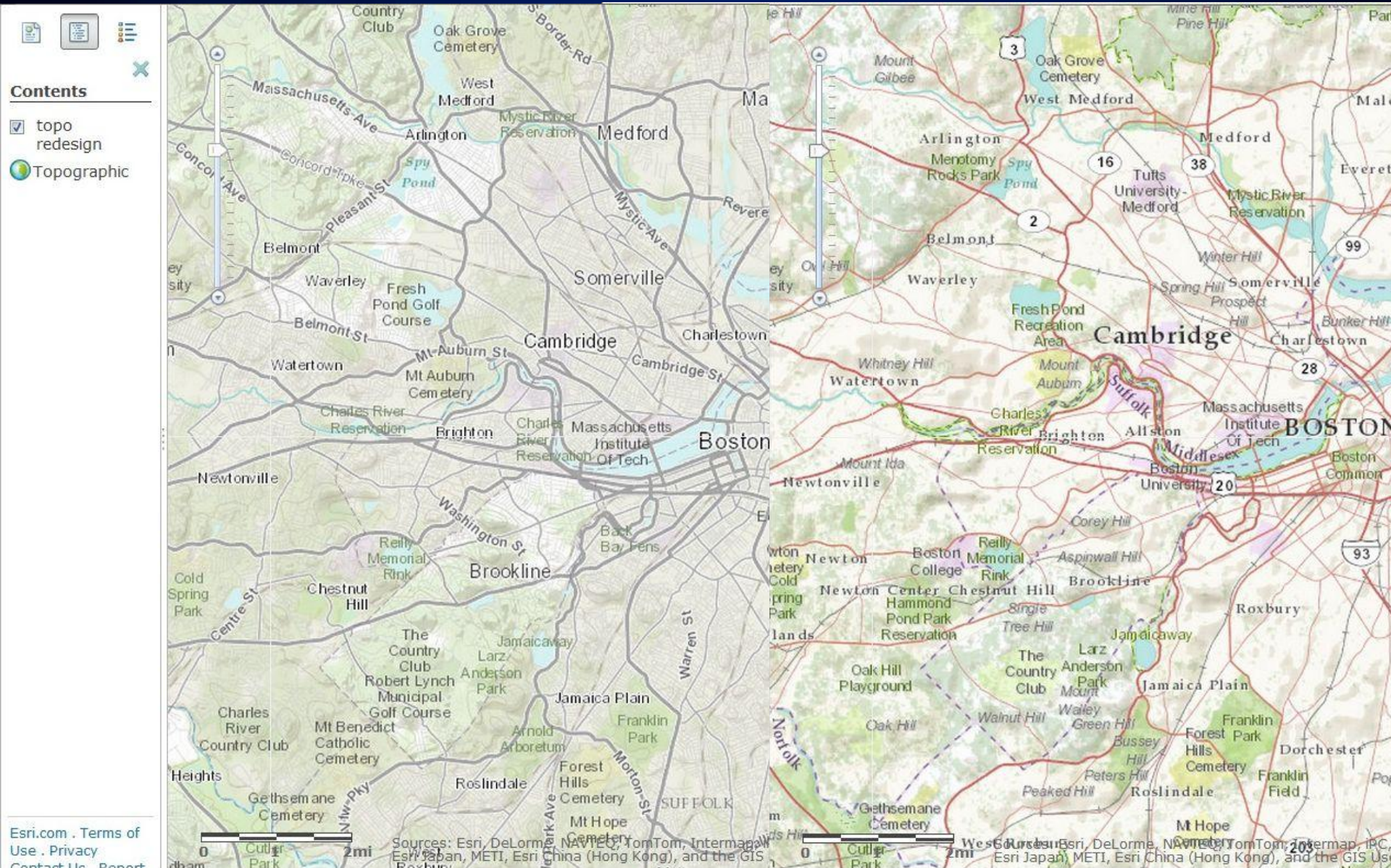
Old



Boston: 1:72,000

New

Old



Imagery Basemap

- **Community Maps also includes the imagery basemap, to which users can contribute**

Agenda

- Program Status
- New and Changing Maps
- Evolution of Community Maps Processing

Original Process

Participant Workflow

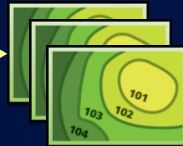
Contributor Data



Community Maps
Templates



Map Cache



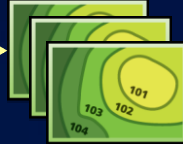
Contributor Data



Community Maps
Templates



Map Cache



Contributor Data



Community Maps
Templates



Map Cache



Esri Workflow

ArcGIS Online



World Topo Map

Workflow Update, December 2011

Send Esri Map Package – Esri Caches!

Participant Workflow

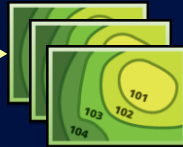
Contributor Data



Community Maps
Template



Map Cache



Contributor Data



Community Maps
Template



Map Cache



Contributor Data



Community Maps
Template



Map Cache

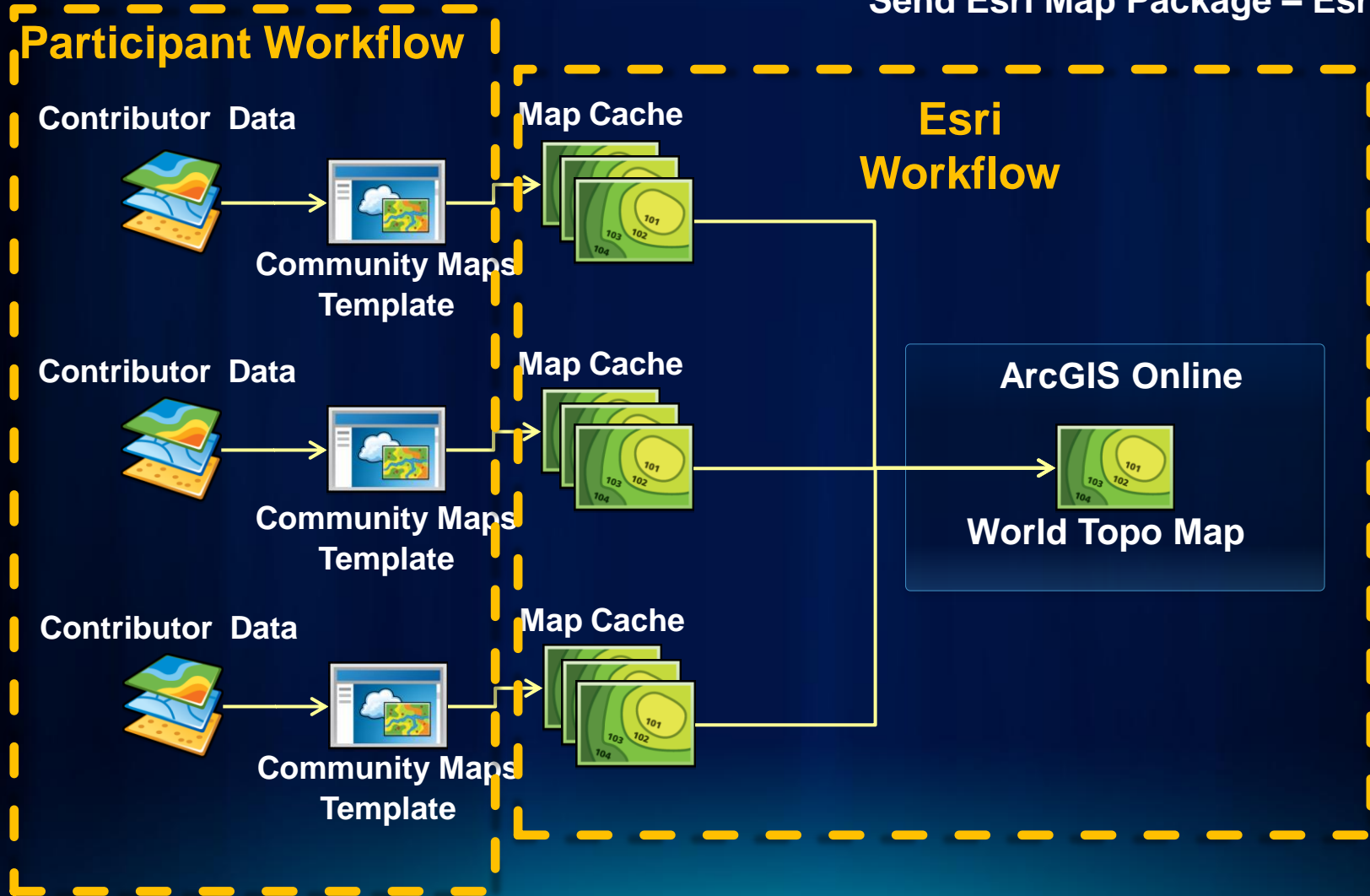


Esri Workflow

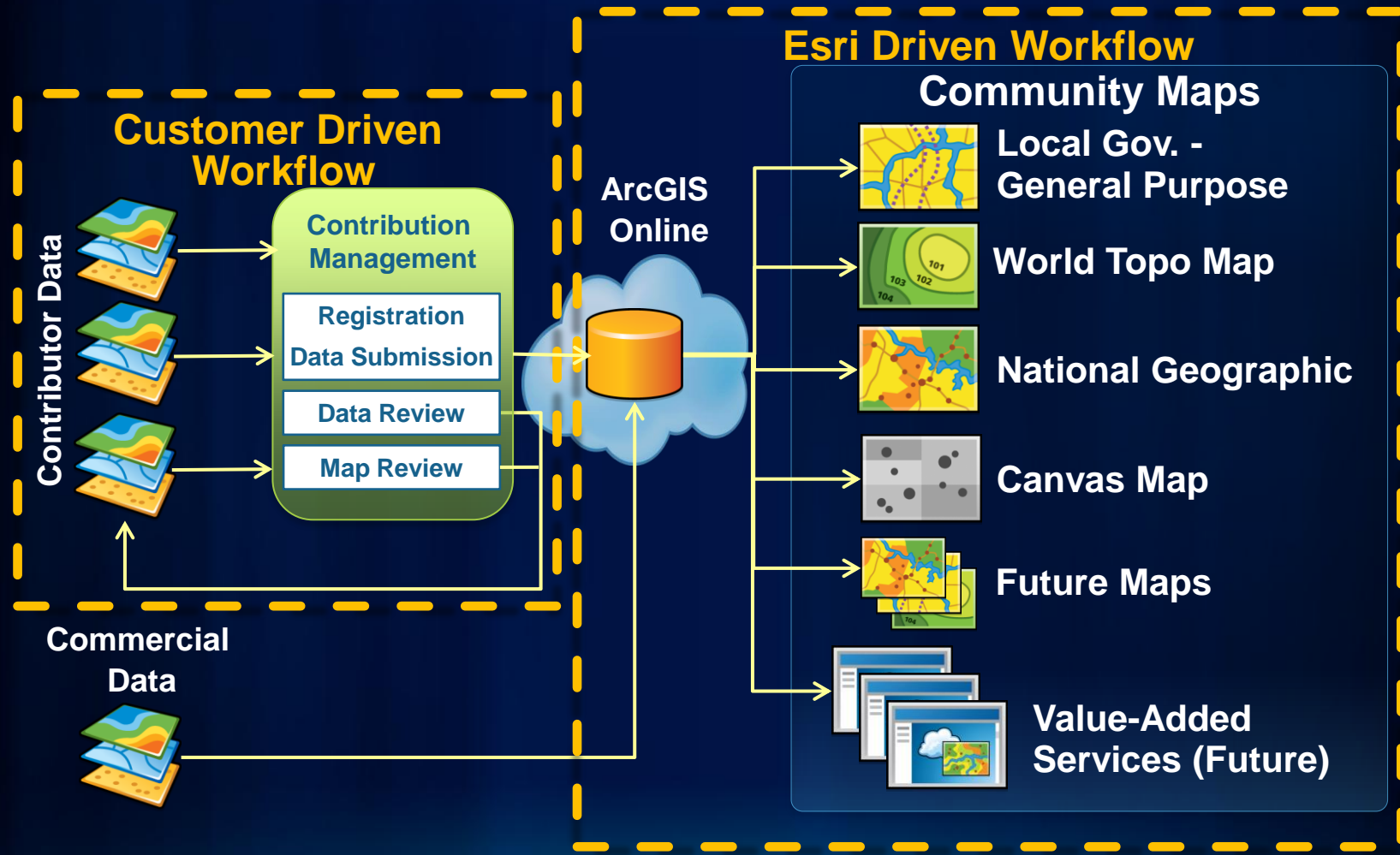
ArcGIS Online



World Topo Map



Coming soon: A Vector-Based Approach: "C.M. 2.0"



Built on Local Government Data Model

Community Maps – The Next Generation

Benefits:

1. **Easier to contribute data**
 - **Simpler submission process**
 - **Contribute what you can**
2. **Create multiple maps from single data source**
3. **Easier to process more frequent updates**
4. **Contributor content displayed at more scales**
5. **Potential for value-added services**
 - Examples: Query, Identify, Geocode, Printing, Reporting

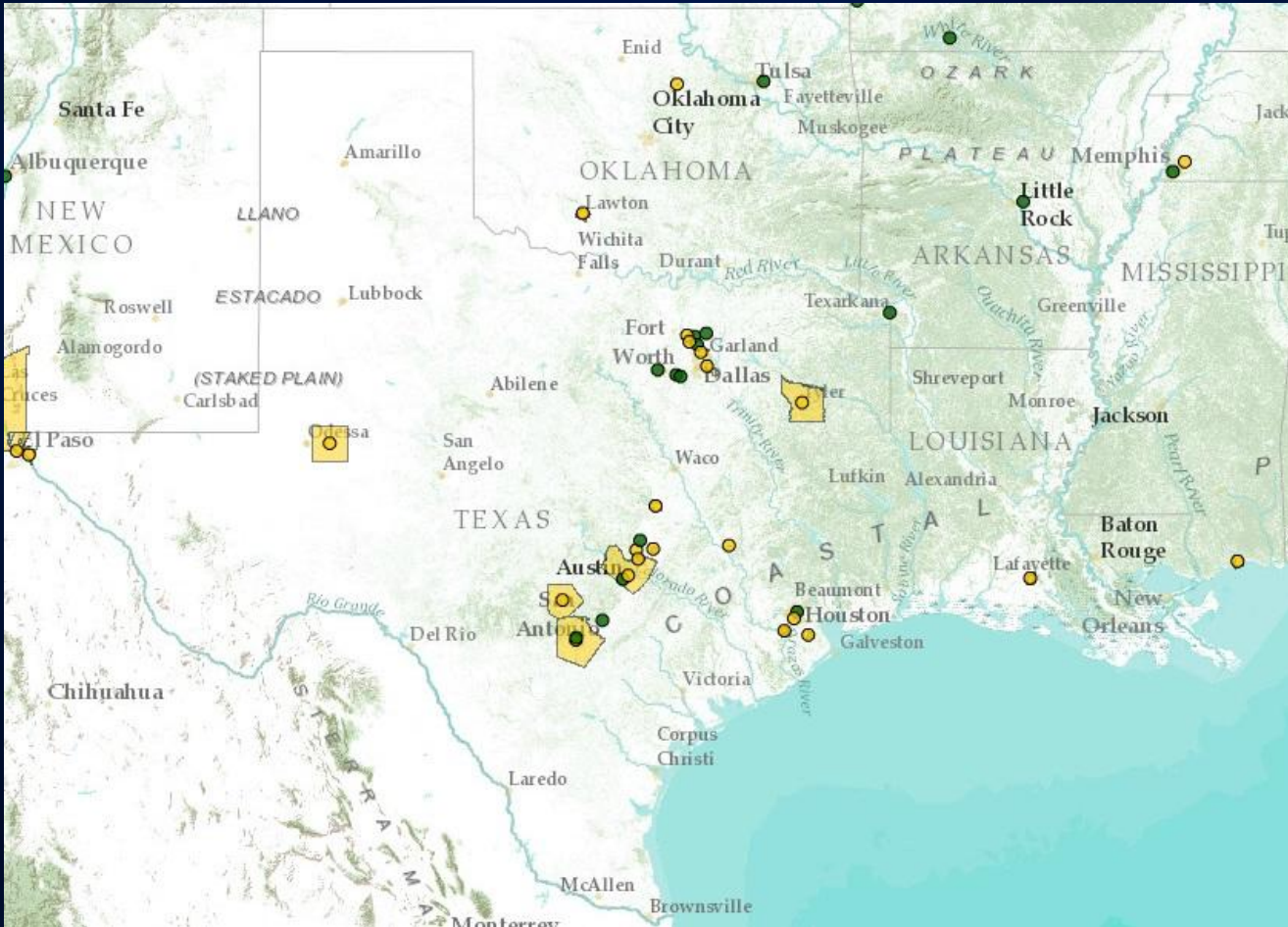
Proposed Schedule:

1. **Beta program Q2 2012**
2. **Official launch – UC 2012**

Aligning with ArcGIS for State / Local Government

- **CM geodatabase and Local Government Data Models**
- **CM geodatabase is a subset**
- **CM geodatabase is a stepping-stone**
- **CM geodatabase supports App templates**

SCAUG Community Map Participants:



Join your neighbors!

resources.arcgis.com

Click on “Community Maps”

More info in the CM Blog, March 20th post

Questions: Don Cooke dcooke@esri.com

Thanks for attending!





esri