



South Central Arc Users Group Conference 2012



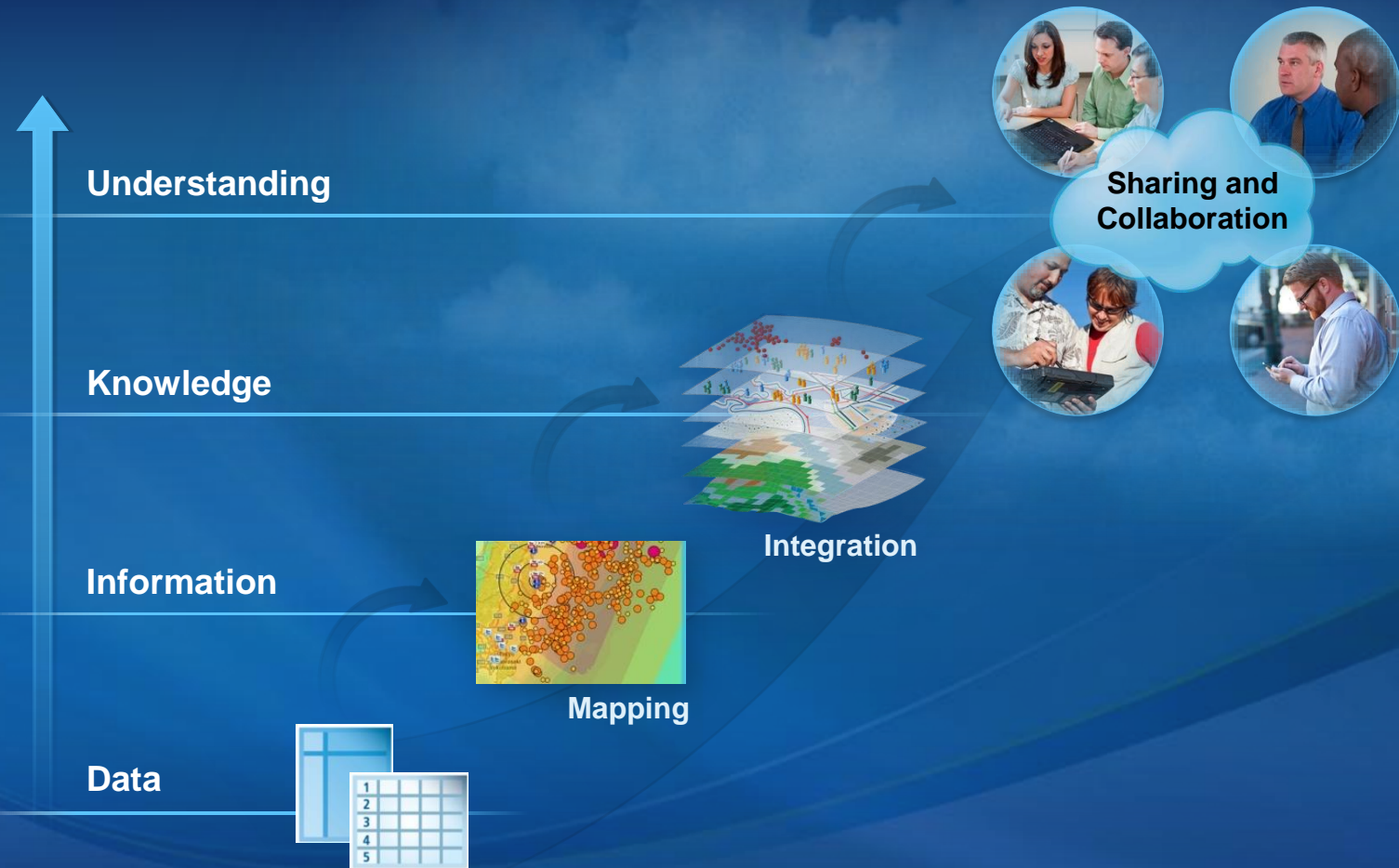
Our World Is Changing Rapidly

Creating Many Challenges For Our Country And Your Organizations



... We Need Collective Intelligence and Understanding

Geospatial Systems Are Helping Us Understand



... Helping Us Make Better Decisions

GeoInformation Products

Key to Effective Understanding



Good GeoInformation Products Require Good Design

- Understanding Issues
- Appropriate Data
- Analysis & Manipulation

... And A Compelling Graphic Design



*Good Products Help Us Understand . . .
... And Support Action*

Good GeoInformation Products

- Provide Timely Information
- Disseminate Knowledge
- Communicate Importance
- Support Decision Making
- Illustrate Time
- Show Status and Performance
- Show The Future

Effectively Telling a Story . . .

*Helping Us Understand . . .
... And Make Better Decisions*

Storytelling With Maps

An Old Discipline, Needing To Be Applied With Today's Technology

Maps

Coral Reefs at Risk Previous map story Next map story


Coral reefs occupy less than one percent of the Earth's marine environment, but are home to more than a quarter of all known marine species. Reefs also serve as a buffer against incoming storm surges, protecting local populations. Unfortunately, coastal ecosystems are threatened by human activities including overfishing, agriculture, and urban development.

The World Resources Institute and its partners have assessed the threats to the world's coral reefs. WRI's *Reefs at Risk Revisited* report is intended to raise awareness about the location and severity of threats to coral reefs. These results can also catalyze changes in policy and practice that could safeguard coral reefs and the benefits they provide to people for future generations.

[See Live App](#)







Galleries

Gallery

Click to view a map story. Accompanying each story is a summary of how it was made. You can comment or ask questions about each story.



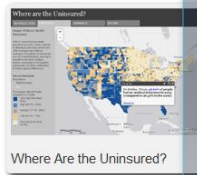
Coral Reefs at Risk



Unemployment and Population



Wealth and Poverty



Where Are the Uninsured?

Templates

Templates

Templates provide an easy way to publish your own map story (without having to write code). Each template uses a distinct story-telling technique. You supply the web map and the words. File downloads include the web files you will need, plus a README file explaining configuration.

Basic Storytelling

Lets the web map do most of the talking. Simple design features map, title, subtitle, and interactive legend.



Download Files

A heading is required, this template is a good space for a legend and scrollable text.



Download Files

Design builds on the side panel structure to



Download Files

User can move the swipe bar to peel back



Unemployment and Population

Previous map story Next map story

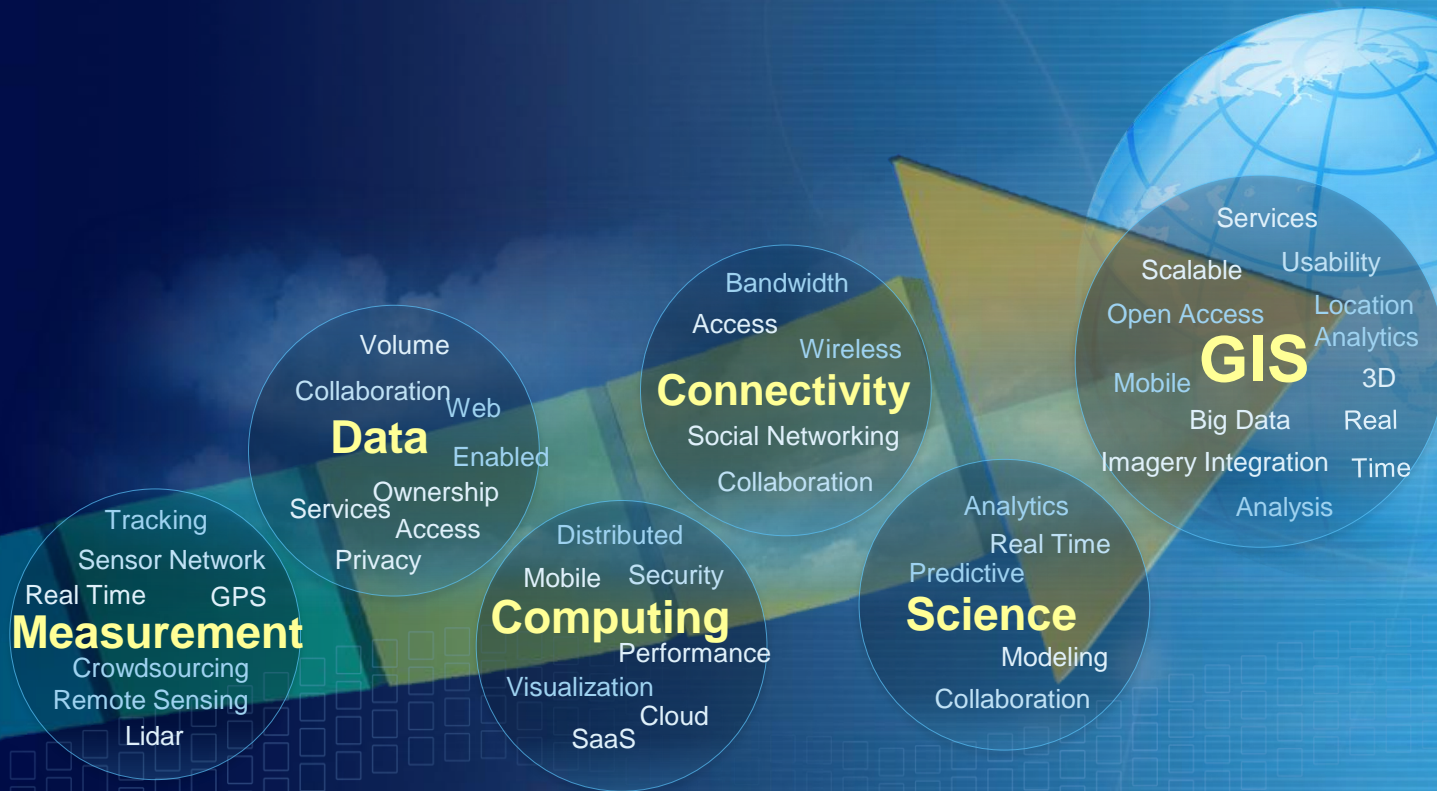
Despite recent signs of recovery, unemployment remains a major national issue. How do patterns of unemployment relate to regional changes in population?



[See Live App](#)

GIS Is Changing

Evolving Technology And Science Are Expanding Our Capabilities



Helping Us Understand Our World

ArcGIS Patterns

Enterprise



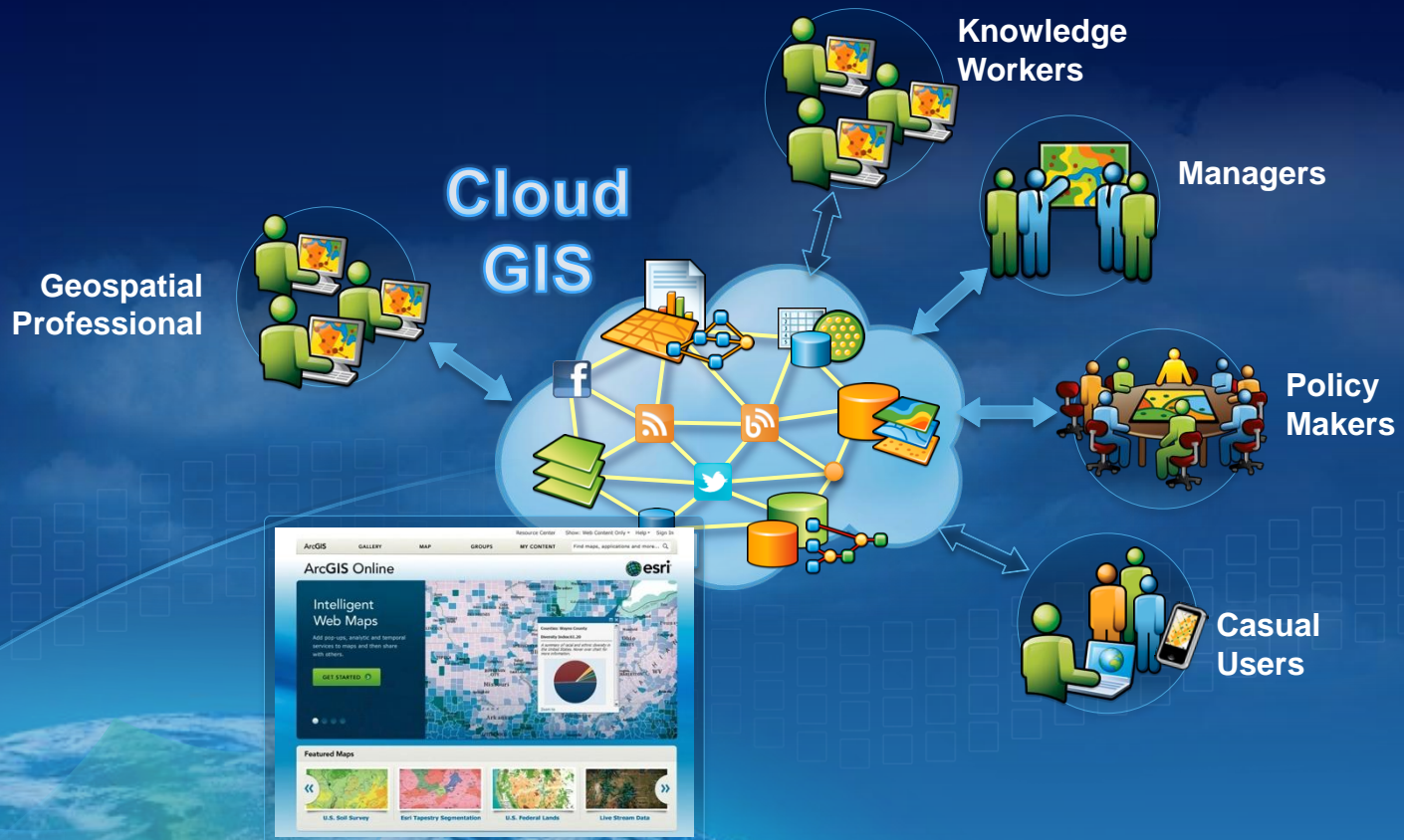
Pervasive



Supporting Geospatial Professionals and Knowledge Workers

A New Pattern Is Emerging

An Intuitive Platform For Sharing, Discovery, Access and Use



Creating An Online Collaboration Framework

This Will Provide Access & Common Infrastructure

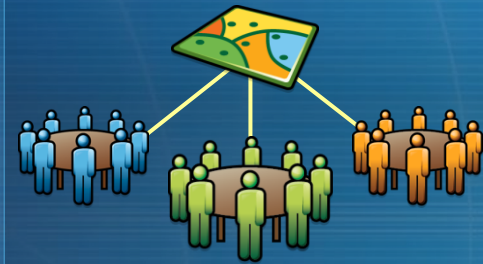
Connecting Departments and Stakeholders



**Integrating and
Synthesizing Information
from Many Sources**



**Facilitating
Communication
and Collaboration**



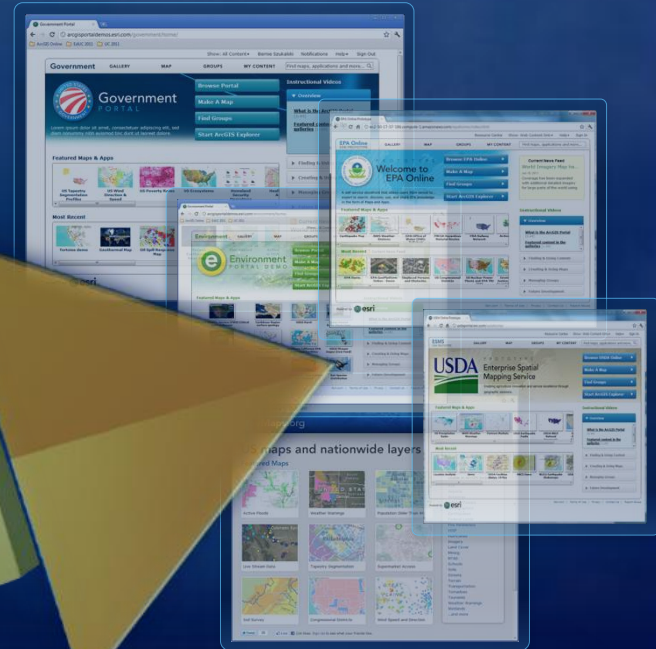
**Breaking Down Barriers
Between Institutions,
Disciplines and Cultures**

ArcGIS Online Is a Cloud Based System

An Emerging Platform for Mapping and Geospatial Content Management

Basemaps Hosting
Mapping Sharing Open Data
Mobile Groups Templates
User Content Images Geocoding
Applications Any Device Catalog
Web Services Intelligent Maps
Standards Analysis
APIs

ArcGIS Online



Online and On Premise

... For Individuals, Departments and the Enterprise

ArcGIS Online Organizes Geospatial Content

Makes it Accessible Across An Organization



... A New Architecture
... For Managing and Providing Easy & Secure Access

Integrating Services (Data, Maps, Models . . .)

- **Information Pop-Ups**
- **Dynamic Web Services**
- **Temporal Data**
- **Spreadsheets**
- **Spatial Analysis**
- **Annotation and Sketching**



Accessible



Intelligent Web Maps Can Be Used Everywhere

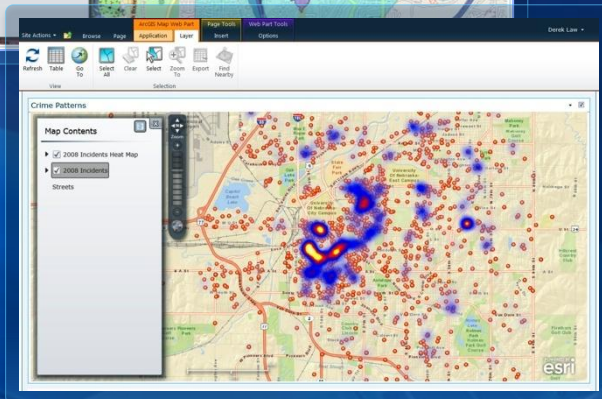
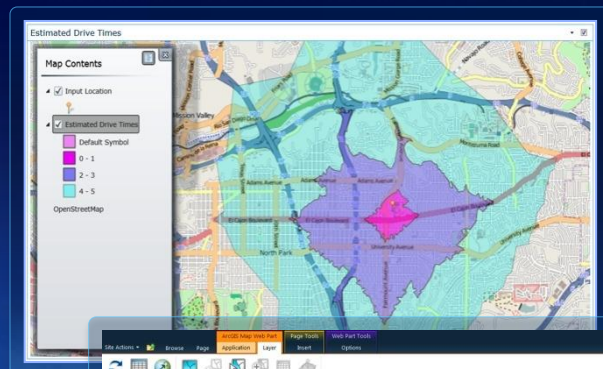


... Enhancing Access and Collaboration

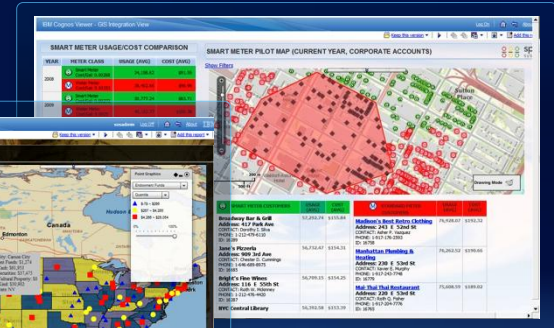
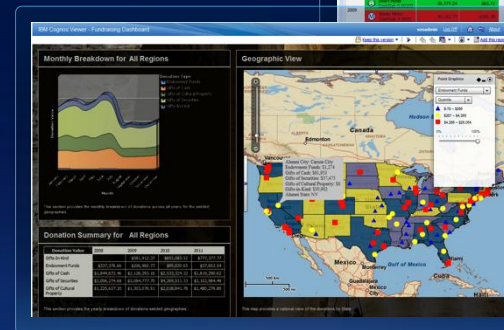
ArcGIS Online Integrates Other Platforms

Geospatially Enabling Content Across the Enterprise

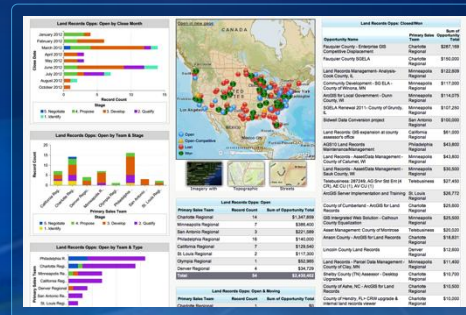
Microsoft SharePoint & Office



IBM Cognos



Salesforce



Supporting Direct Integration

Karen Lizcano



Solution Initiatives

A Program To Organize Best Practice Solutions



ArcGIS for . . .

New Initiative - Solutions and Communities of Users

Public Safety Planning and Development
Elections Land records Public Works
Water Utilities Military—Maritime Operations
Military—Land Operations
Emergency Management Local Government
National Government State Government
Demographics Intelligence Petroleum
Gas Utility DOT National Guard
Housing Health Telco Ocean Use Planning
Non-Profit and NGOs Facilities Military City

Solution Initiative

ArcGIS Based Solutions Reflecting Best Practices

- Organized Knowledge
- Accessible
- Easily Configured
- Community Driven
- Open Source
- Leveraged by Partners



... Templates and Ready-to-Use Applications

ArcGIS for Local Government

ArcGIS for Local Government

resourcesbeta.arcgis.com/en/communities/local-government/

ArcGIS | Sign In

Communities Library Blog Forums Videos

Search Local Government

ArcGIS for Local Government

Communities Public Safety Land Records Elections Planning & Development Public Works Water Utilities

ArcGIS for Local Government provides maps and apps that help you implement GIS in your local government, and a destination where users, partners, and the teams within Esri can collaborate.

How will it help me?

ArcGIS for Local Government will save you time and money and also increase the value of GIS in your organization.

[Read more...](#)

Quick Links

I'm interested in...

- Public Safety
- Land Records
- Elections
- Planning and Development
- Public Works
- Water Utilities
- ArcGIS for Local Government System

Support

- FAQ
- Forums
- Ideas
- Support

Community

- Partners
- Users

Gallery

[More Gallery posts](#)

Esri Maps & Apps

Esri Maps & Apps

Partner Maps & Apps

Partner Maps & Apps

Partner Maps & Apps

Providing Workflows and Tools

Geo Demographic Data

Defense

Social and Community Analysis

Redistricting

Ready to use Maps Data Models and Workflows

Transportation – Linear Referencing

Logistics

Mapping and Charting

Business Analysis

Geo Portals

Esri Community Analyst

Welcome, Gary! | Log Out

My Account | Preferences | Help | Support

Home

Explore Community

Select Location

Get Reports

Smart Map Search

Create Color-Coded Map

Import Locations

Business Search

Enter business name or type

advanced options

Enter Address (optional)

Go

Choose Variables

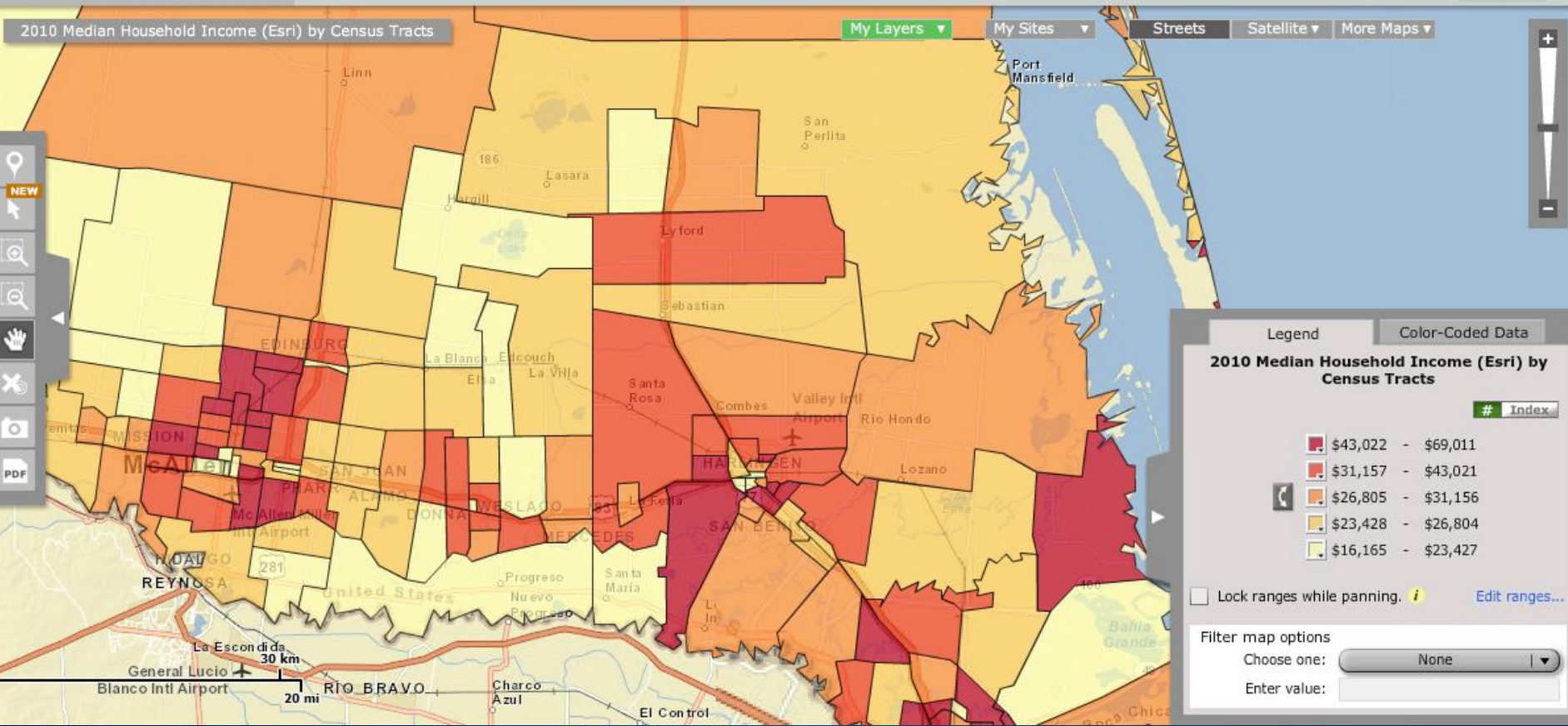
Geography: Auto Selection

Colors:

Transparency:

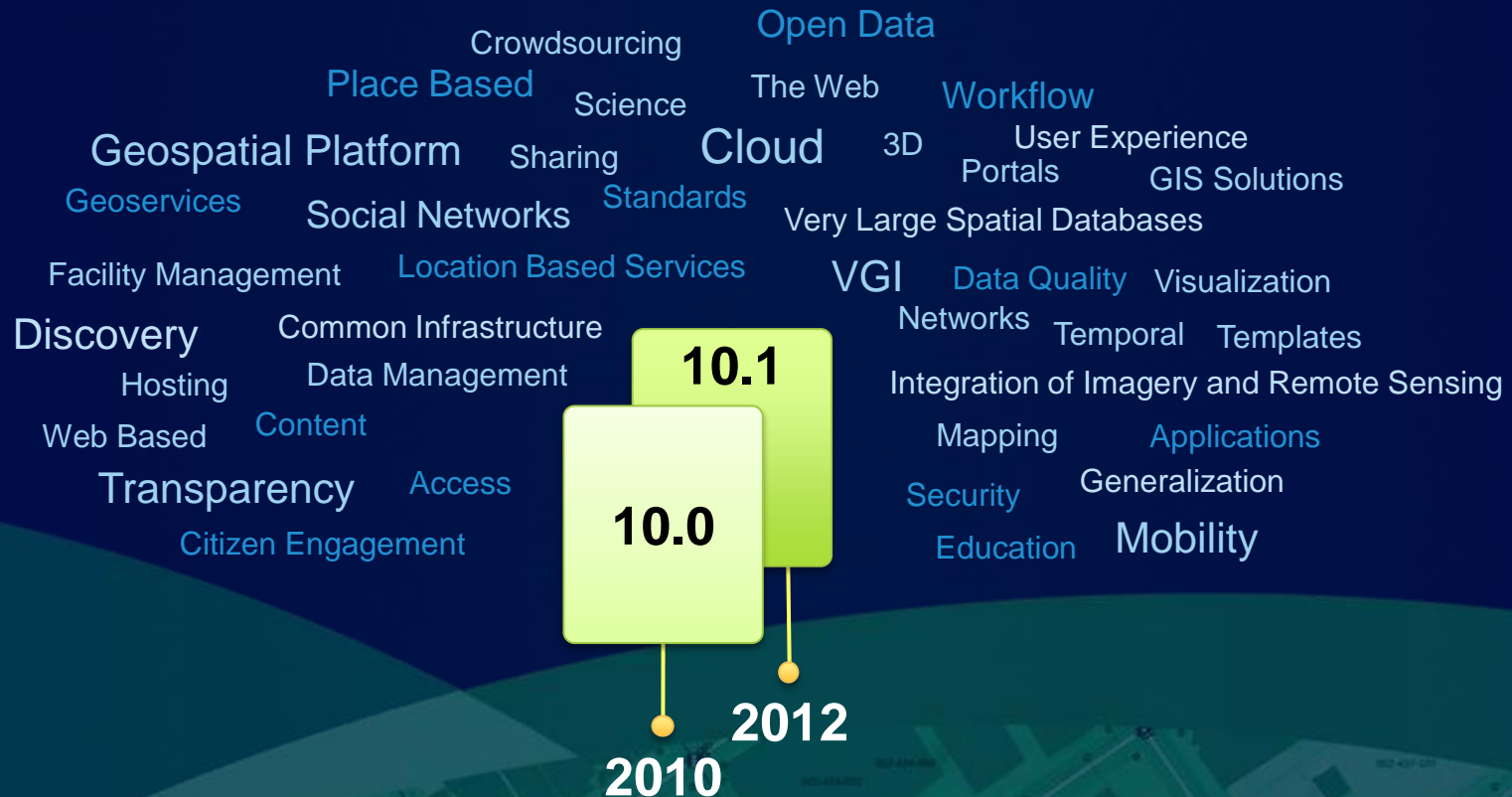
Select Location

More Options...



ArcGIS Is Advancing Rapidly

Introducing Many New Capabilities



Improving Quality, Performance and Usability

What's Next?

Many Development Initiatives



Ideas

ideas.arcgis.com

esri

Your Input Is Driving Our Work

Esri — Serving Our Users

Understanding Our World

Our Goals

- Advancing GIS and Geographic Science
- Promoting Spatial Thinking

Our Status

- Financially Strong and Growing
- Many Strong Relationships

Making a Difference

... And Contributing to Society



Afternoon Sessions

- **ArcGIS Online**
- **ArcGIS for Government**
- **Desktop Tips & Tricks**
- **Update on Community Maps Program**
- **Public Works Solutions**
- **Creating a Simple Web Application**
- **What's New in 10.1**
- **Local Government Data Model**

- **Thursday – Lightning Talks in Esri Booth**



esri