



Making Data Useful

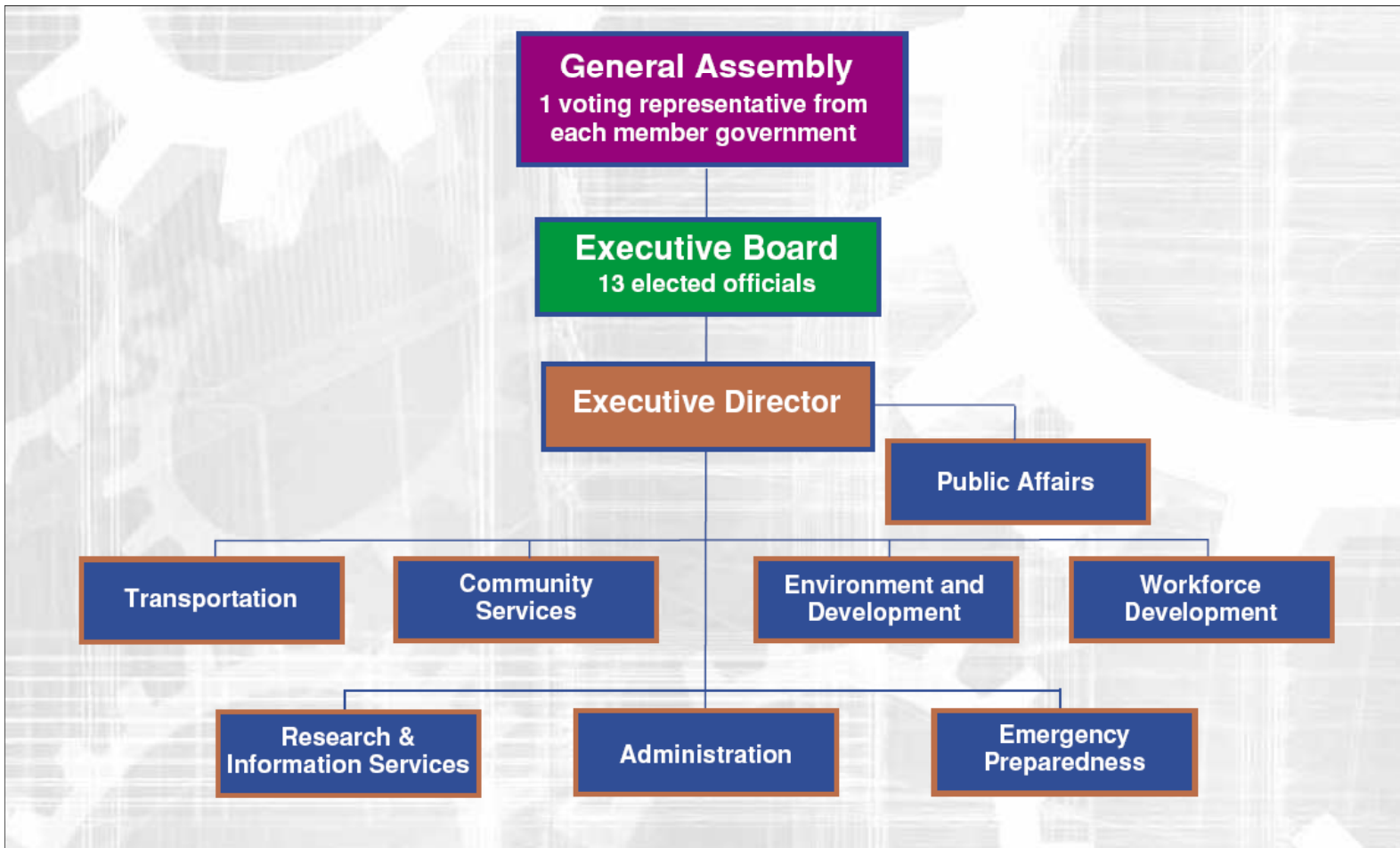
North Central Texas Council of Governments
Research and Information Services

March 29, 2012

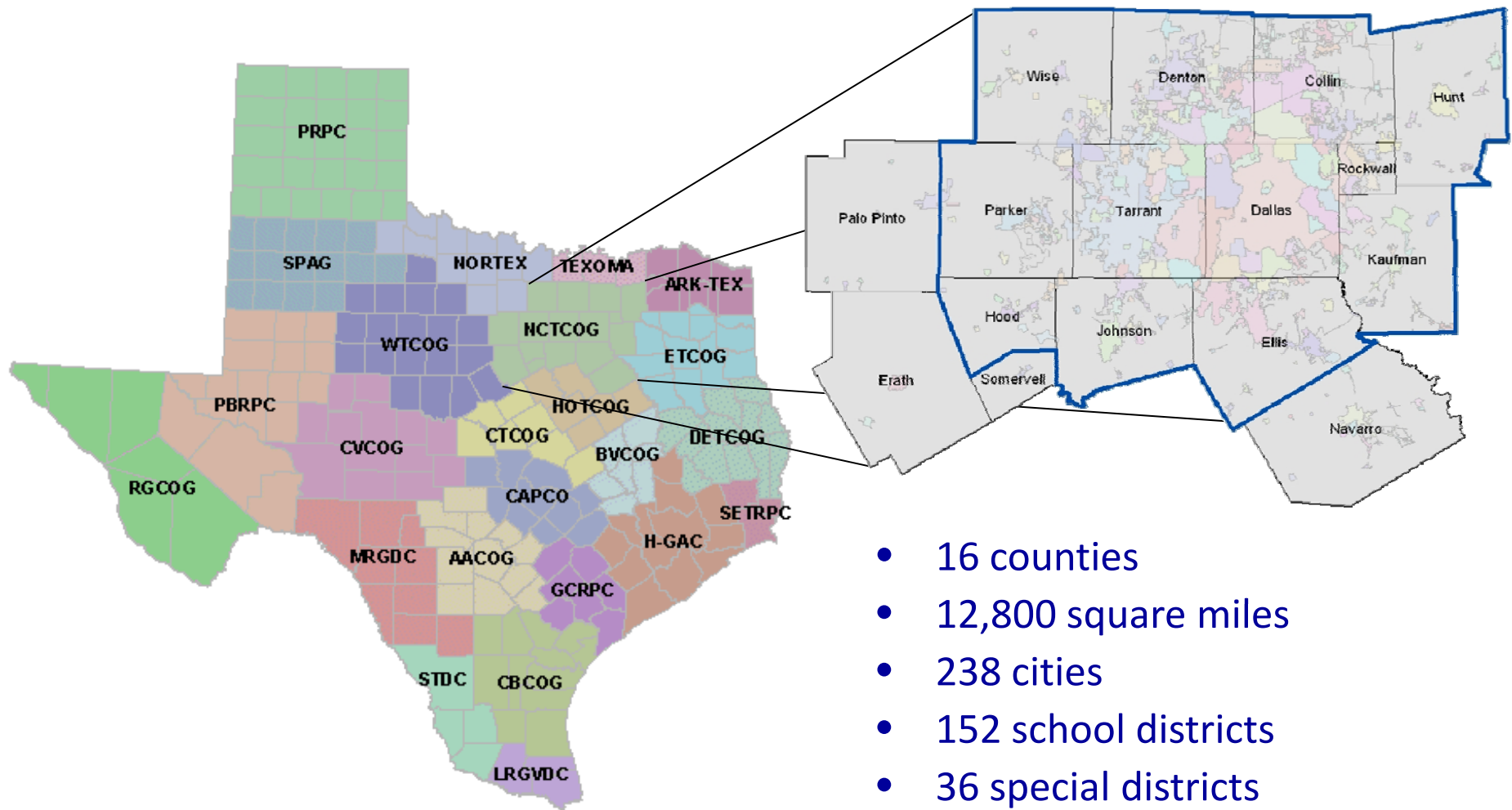
NCTCOG

- Voluntary association of, by, and for local governments
- Assist local governments
 - Planning for common needs
 - Cooperating for mutual benefit
 - Coordinating for sound regional development

NCTCOG



NCTCOG



Research and Information Services

Research

- Population, Housing, and Employment Estimates
- Demographic and Land Use Data
- Development Monitoring
- Specialized Analysis and Research Projects
- Census Support
- Technical Assistance

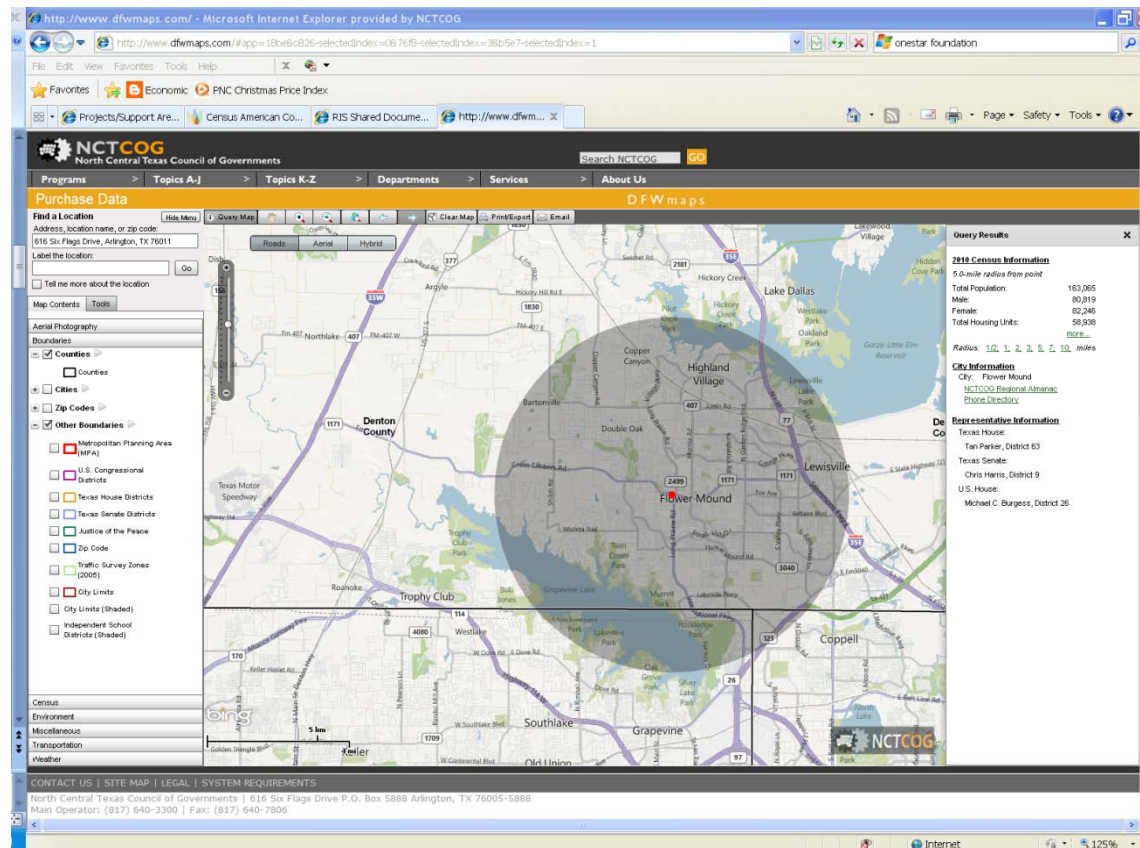
Information Services

- Computer / Network Support
- Internet / Intranet Services
- Geographic Information Systems
- Local Government Technical Services
- Database Management
- Shared Services
- Information Security
- Application Development





DFWmaps.com



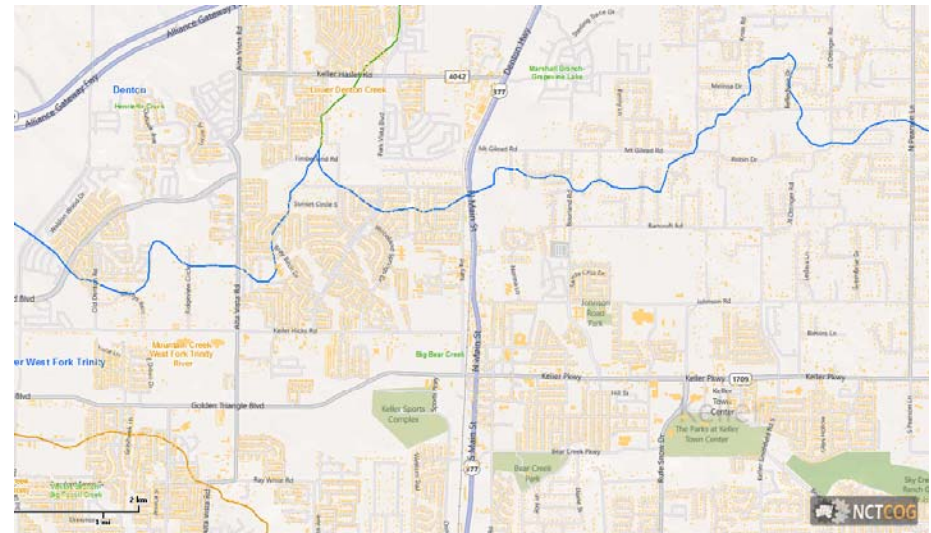
The flagship mapping service of the NCTCOG Research and Information Services Department.

DFWmaps gives the public free access to NCTCOG information through a user-friendly Internet application.



DFWmaps.com

- 16-county Coverage
- Interactive
- Bing Maps Platform
- Road/aerial/hybrid Views
- Display Aerials, Boundaries, Land Use, Transportation, Weather
- Print/export/email/save Maps
- Basic Census Data Query
- Purchase Data





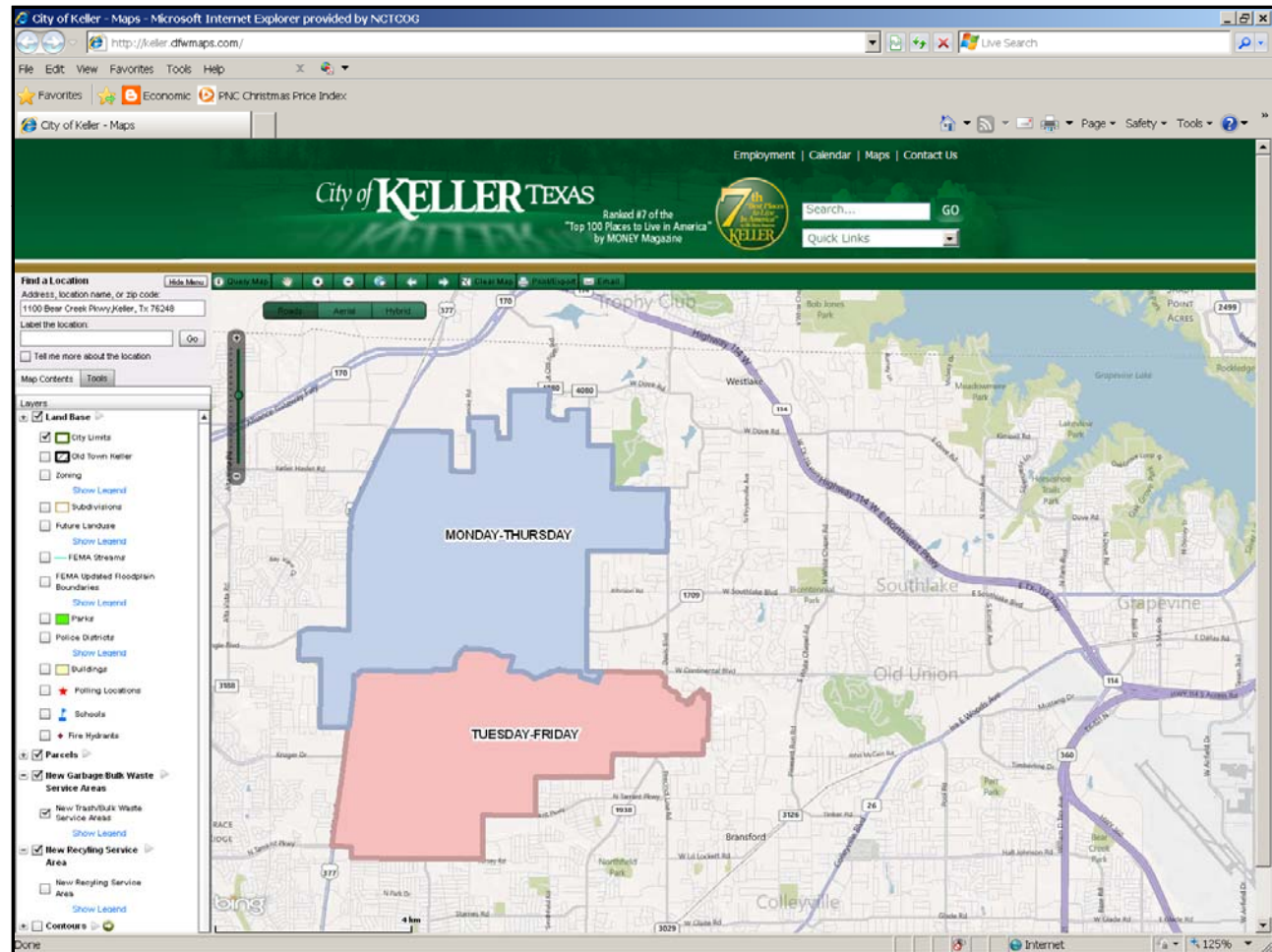
iCommunities

DFWmaps

- Boundaries
- Aerials
- Contours

Other Data Layers

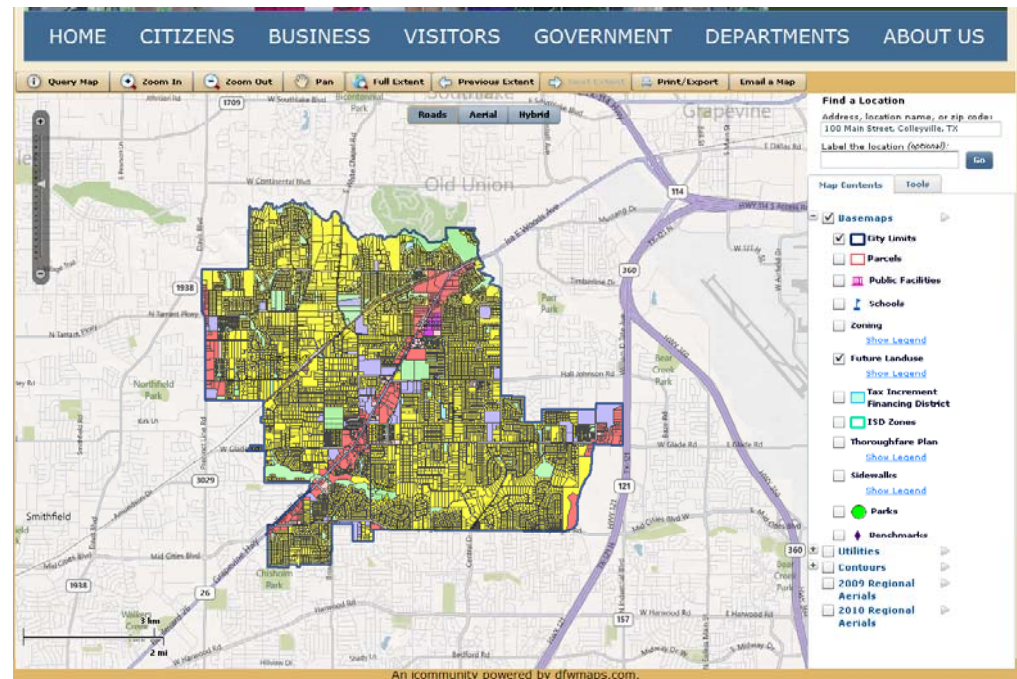
- Trash/recycling days
- Crime data
- Library locations
- Zoning
- Homeowners associations





iCommunities

- Localized Coverage
- Customized Colors, Masthead
- Accessible Through Local Entity's Own Website
- Communication Tool
- Publish Own Data





RIS Challenges

- Possess Relatively Small, but Talented Staff
- Facing Funding Cuts
- Desire to Continue to Support Local Governments and Other Data Users
- Belief that Shared Services Provides Efficiency and Cost Savings
- Aim to enlarge support base

Introducing:

Research and Information Services Network (RISN)

Easily Understood

Accessible

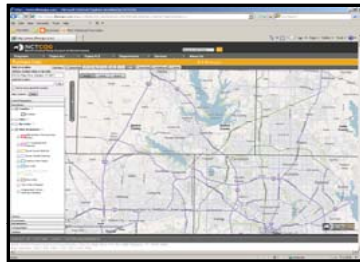
Informational

Operationally Useful

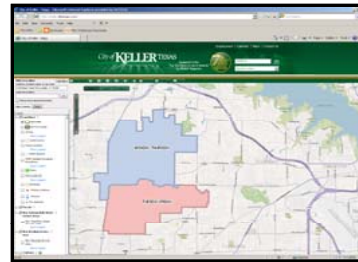
Cost Effective



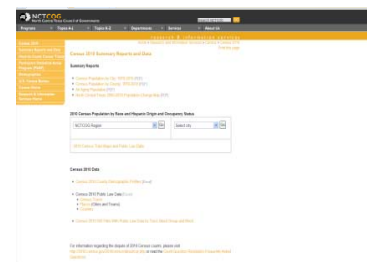
Research and Information Services Network (RISN)



DFWmaps.com



iCommunities



NCTCOG Data

Scalable – Acquire subset or license entire data layer

Flexible – Data hosting and access options

Economical – Shared service means increased efficiency and cost avoidance

Sustainable – All data users have an opportunity to support efforts

Easily Understood

Accessible

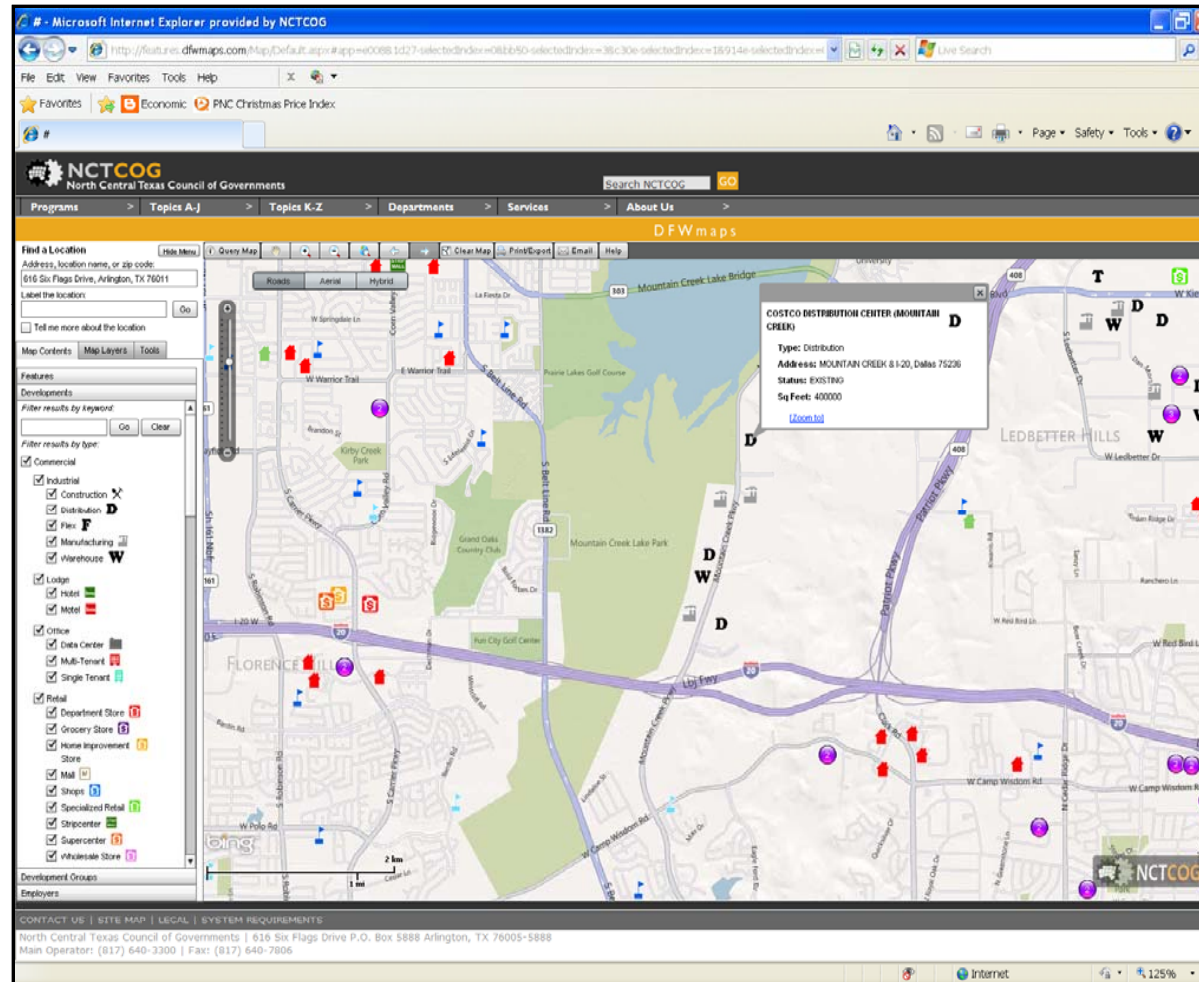
Informational

Operationally Useful

Cost Effective



Research and Information Services Network (RISN)



RISN Data Layers

- Demographic data
- Major developments
- Weather information
- Land use
- Parcels
- Traffic counts
- Employment data
- Planimetrics

Applications

- ❖ Economic development
- ❖ Planning
- ❖ Site selection
- ❖ Zoning cases
- ❖ Public outreach
- ❖ Small-area demographic analysis

Easily Understood

Accessible

Informational

Operationally Useful

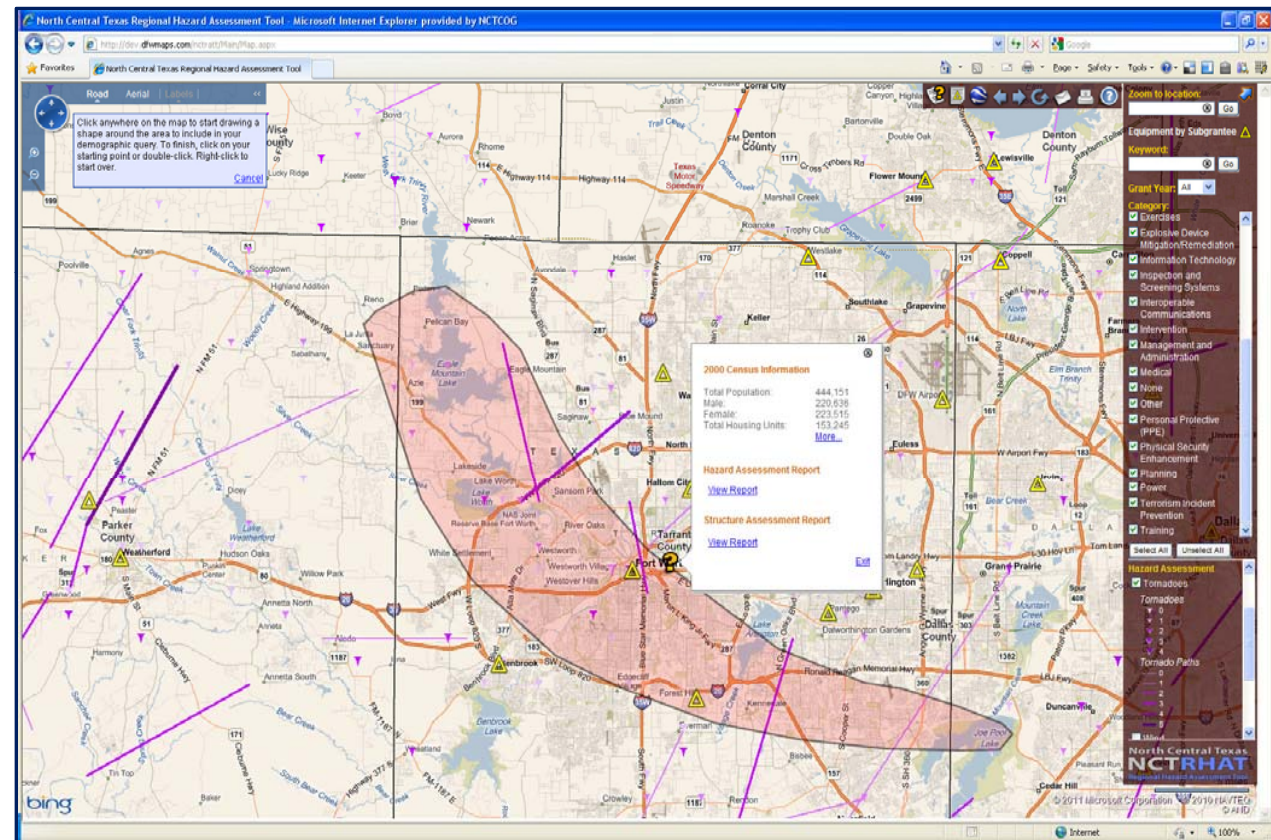
Cost Effective



Application

Regional Hazard Assessment Tool (RHAT)

Web application that aggregates demographic, development, and weather event information on a standardized base map to assist in hazard mitigation, planning, and response.



Easily Understood

Accessible

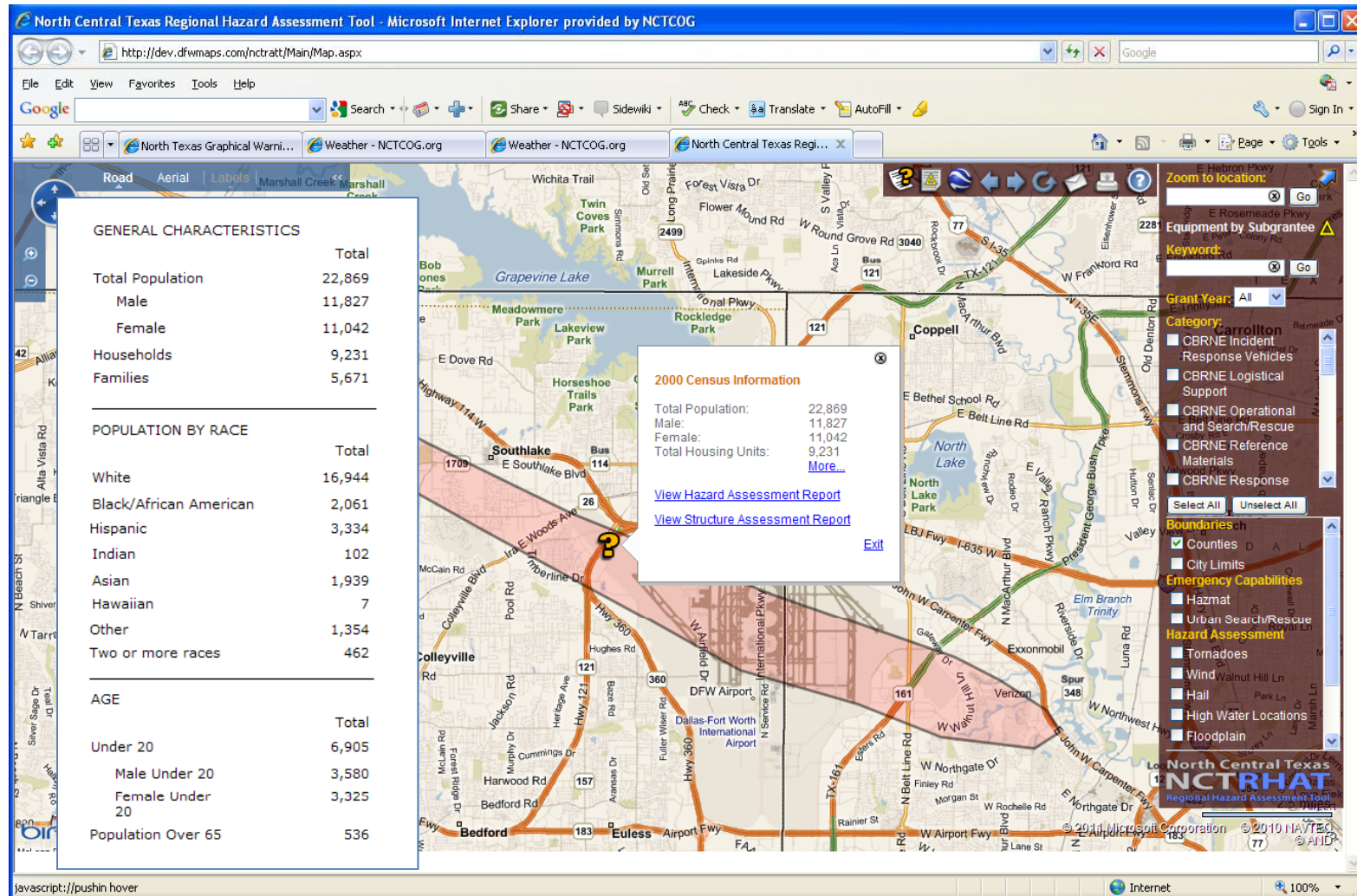
Informational

Operationally Useful

Cost Effective



Application: RHAT



Easily Understood

Accessible

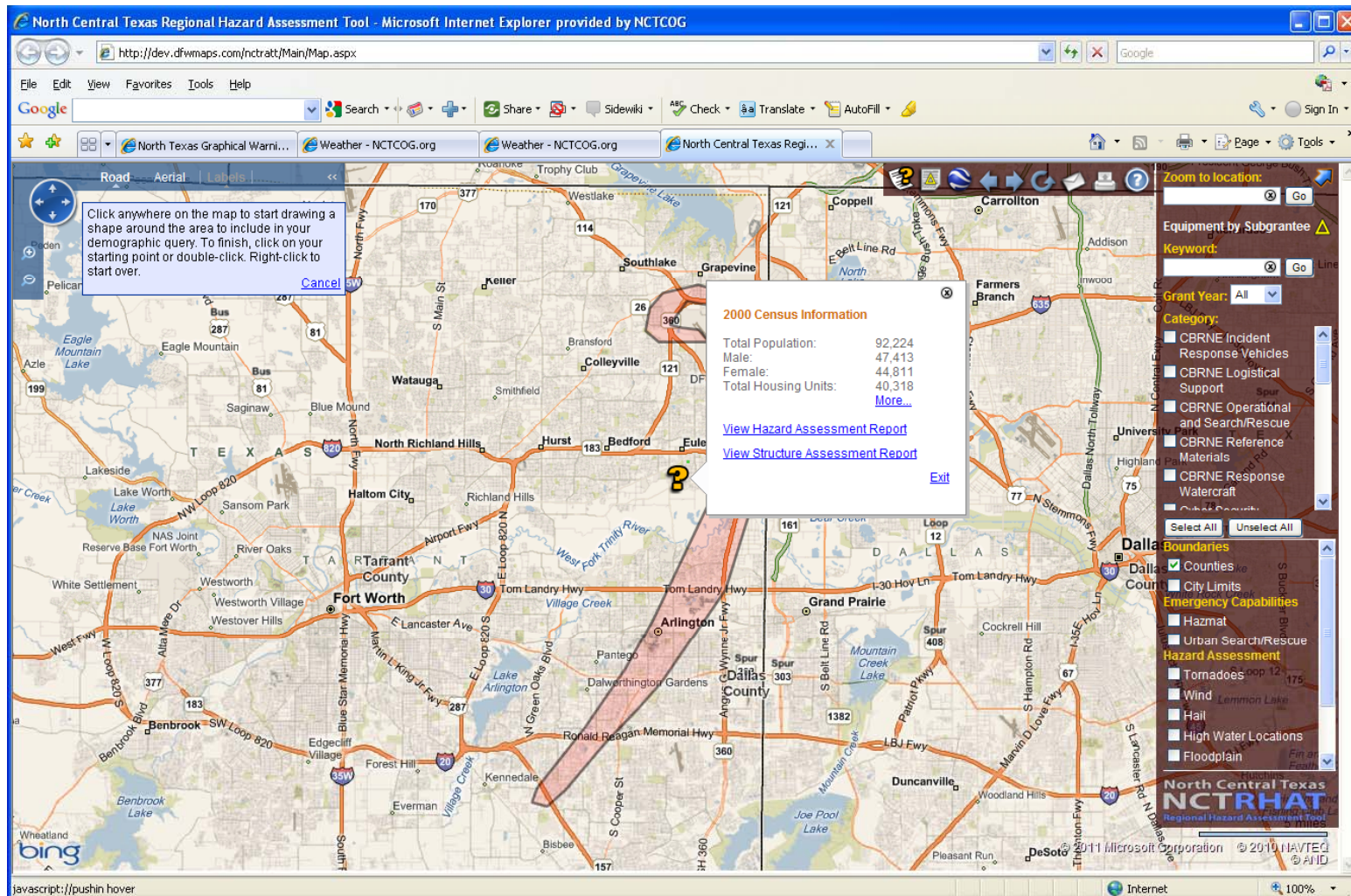
Informational

Operationally Useful

Cost Effective



Application: RHAT



Easily Understood

Accessible

Informational

Operationally Useful

Cost Effective



Application: RHAT

<div> <div>1 of 2</div> <div>100%</div> <div>Find Next</div> <div>Select a format</div> <div>Export</div> </div>						
Land Use	Cost Range	Floodplain	Improved Value	Land Value	Total Value	# of Parcels
Real, Industrial	\$100,000 to \$200,000		\$117,350	\$52,650	\$170,000	1
	\$200,000 to \$300,000		\$1,273,805	\$1,898,397	\$3,172,202	5
	\$300,000 to \$400,000		\$349,306	\$50,144	\$399,450	1
	less than \$50,000		\$102,377	\$3,350,105	\$3,452,482	3
	over \$400,000		\$56,447,270	\$16,538,683	\$72,985,953	14
Res Condominiums	\$50,000 to \$100,000		\$2,386,207	\$512,864	\$2,899,071	36
	less than \$50,000		\$300,685	\$71,906	\$372,591	9
Res Duplex	\$100,000 to \$200,000		\$14,433,756	\$1,891,586	\$16,325,342	115
	\$200,000 to \$300,000		\$640,860	\$47,740	\$688,600	3
	\$50,000 to \$100,000		\$22,348,480	\$3,724,361	\$26,072,841	306
	\$50,000 to \$100,000	500-YR	\$67,275	\$9,225	\$76,500	1
	less than \$50,000		\$2,414,660	\$745,287	\$3,159,947	62
Res Mobile Homes	over \$400,000		\$627,473	\$79,127	\$706,600	1
	less than \$50,000		\$550,095	\$1,020,510	\$1,570,605	61
	less than \$50,000	100-YR	\$5,400	\$16,500	\$21,900	1
Res Multi-family	\$100,000 to		\$1,964,332	\$639,759	\$2,604,091	13

Easily Understood

Accessible

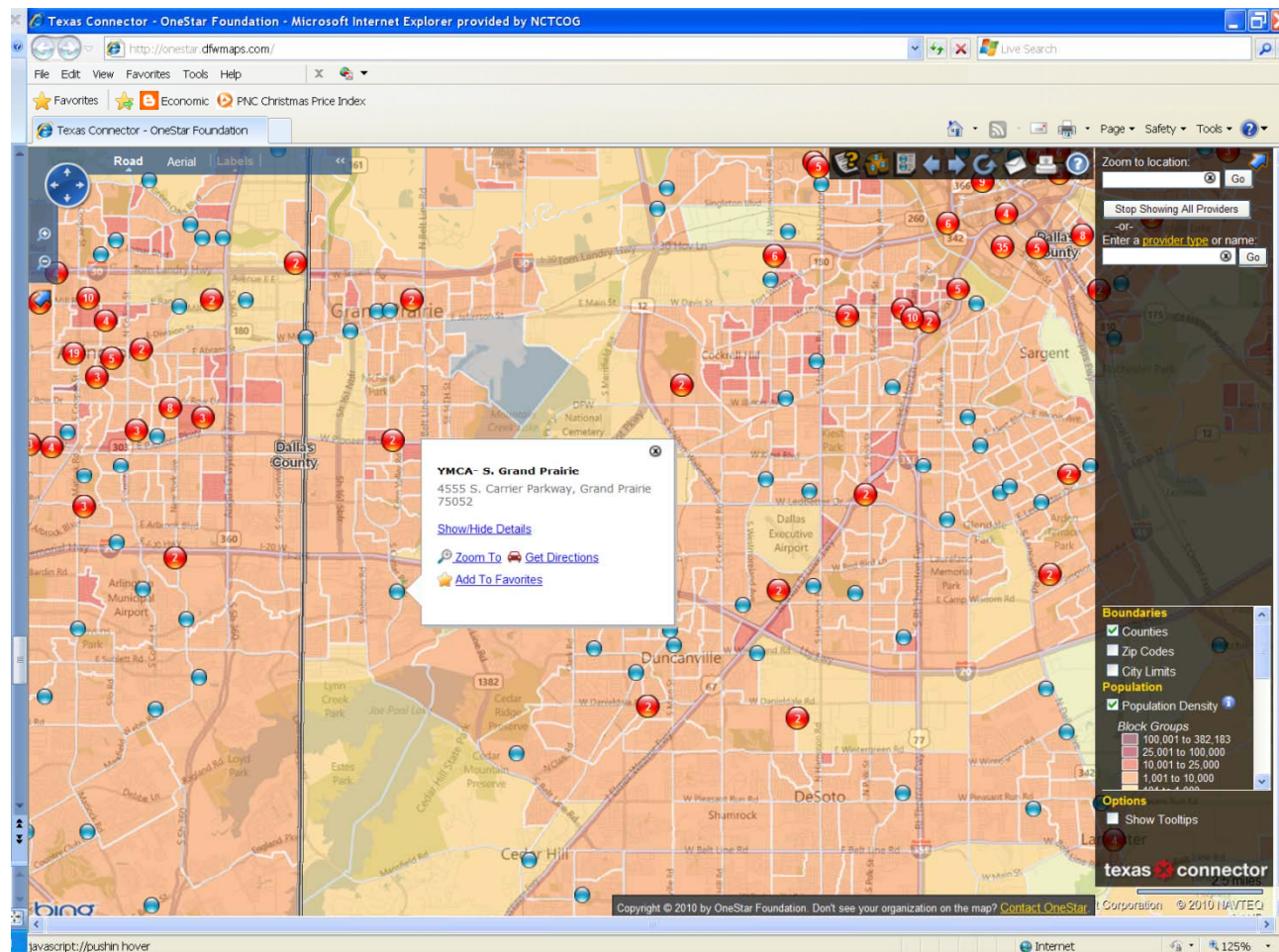
Informational

Operationally Useful

Cost Effective



Application



Texas Connector by OneStar Foundation

Interactive web-based tool that can be used to analyze the linkages between community needs and nonprofit organization locations and services.

Easily Understood

Accessible

Informational

Operationally Useful

Cost Effective



Application



North Central Texas
NCTRATT
Regional Asset Tracking Tool

DFW maps

DALLAS
REGIONAL
CHAMBER®



NRH | ECONOMIC
DEVELOPMENT
NORTH RICHLAND HILLS



For More Information:

Donna Coggeshall

Research Manager

817-695-9168

dcoggeshall@nctcog.org

David Raybuck

Solutions Architect

817-608-2357

draybuck@nctcog.org

RISN: www.nctcog.org/risn

DFWmaps: www.dfwmaps.com

iCommunities: www.nctcog.org/ris/icommmunities.asp

RIS Data: www.nctcog.org/ris/demographics