

Deploying Web-GIS Applications Across Multiple Platforms and Mobile Devices

April 11, 2012

SCAUG - Addison

Presenter:
Scott Stafford-Veale, Latitude Geographics

Who We Are



- Server GIS software company – Customizable COTS solutions
- Professional services, support, and training
- 1000+ clients worldwide
- 85+ staff – focus on ArcGIS Server
- Esri Platinum Partner & 2010 Partner of the Year
- Located in Victoria, BC, Toronto, ON, Rotterdam, Netherlands



Our Goals

For Web Mapping Consumers

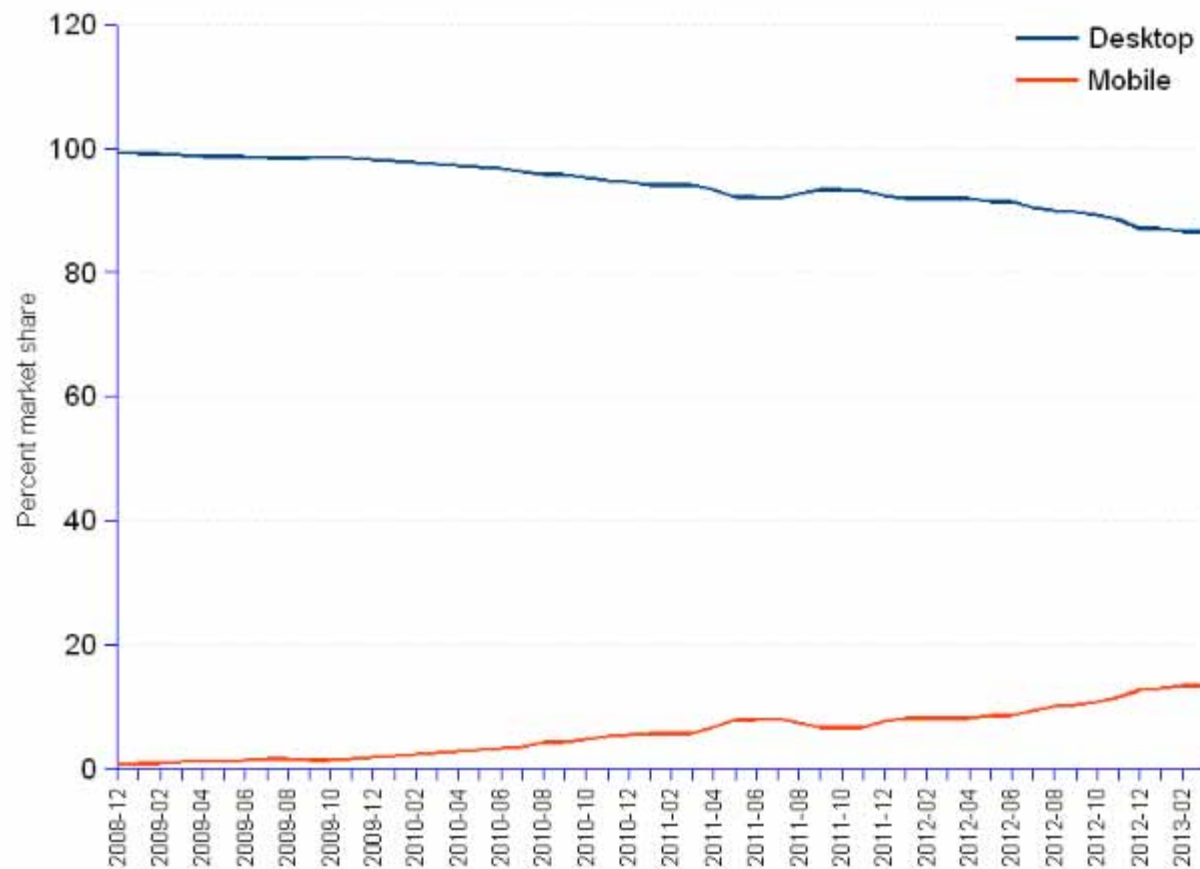
Do everything possible to ensure end users have a positive experience and get done what they need to do.

For Web Mapping Producers

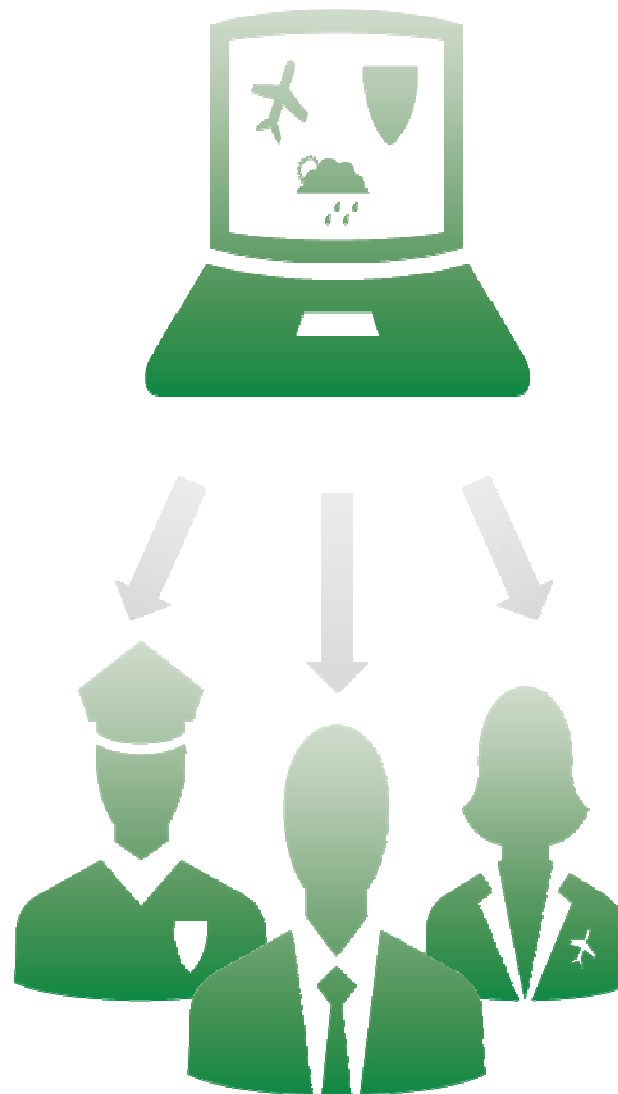
Make it as easy as possible for organizations to create, deliver and maintain the web-based GIS capabilities that their end-users need.

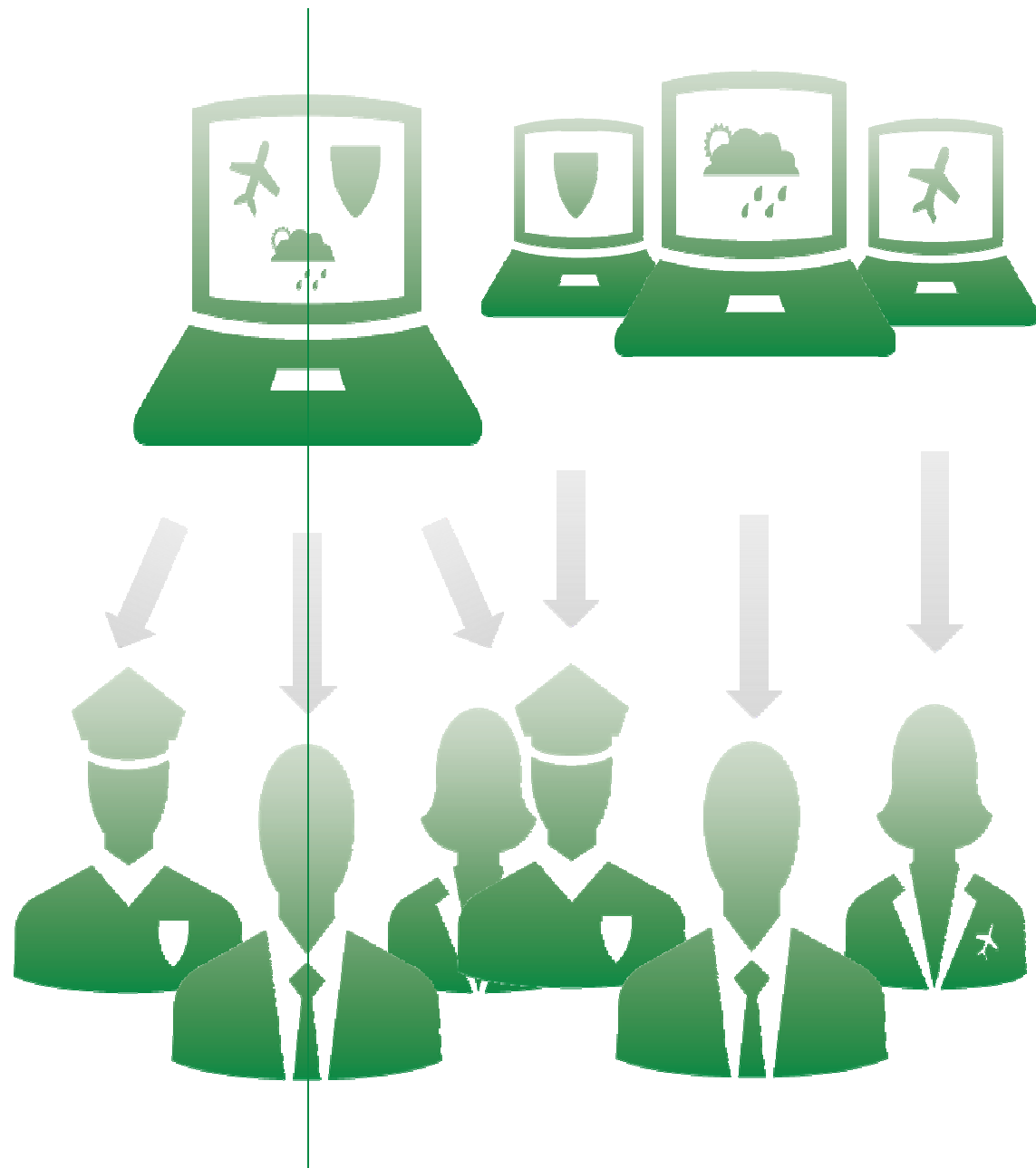
Why build cross platform/cross device apps?

In North America, desktop and mobile Web access show converging trends



Source: [StatCounter Global Stats](#)





“Single-Topic maps get 3 times the traffic of the traditional Map Portal”

~Allan Glen,

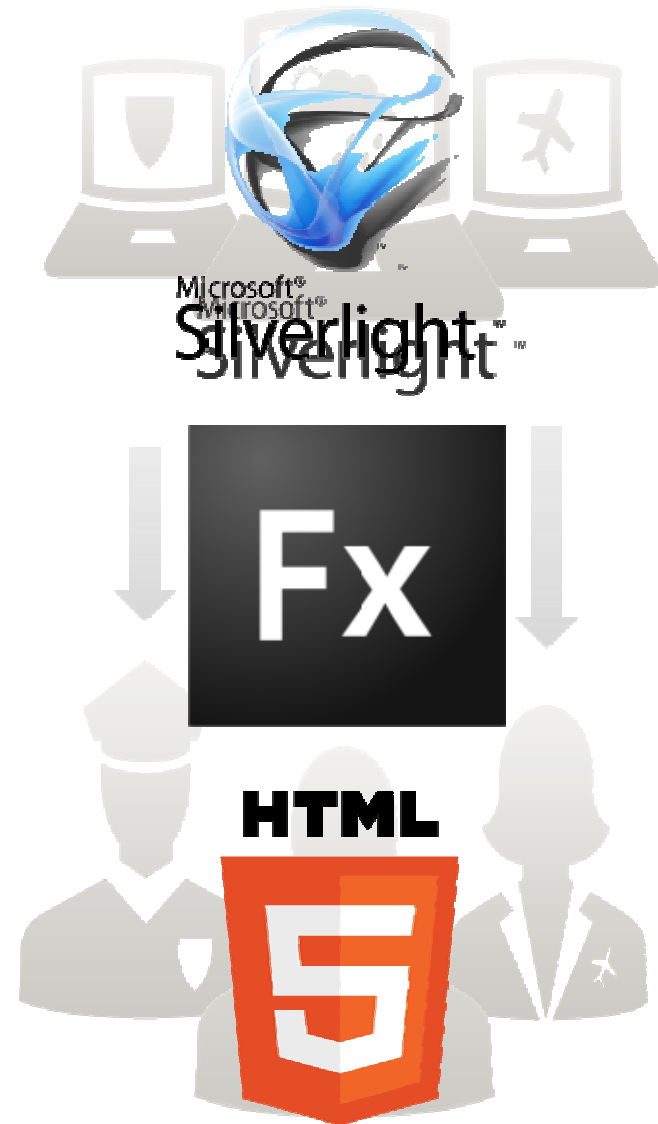
City of Denver, GIS Software

Development Manager

Source:

Los Angeles County CIO Blog:

<http://egis3.lacounty.gov/eGIS/2012/09/14/how-the-public-actually-uses-local-government-web-maps/>

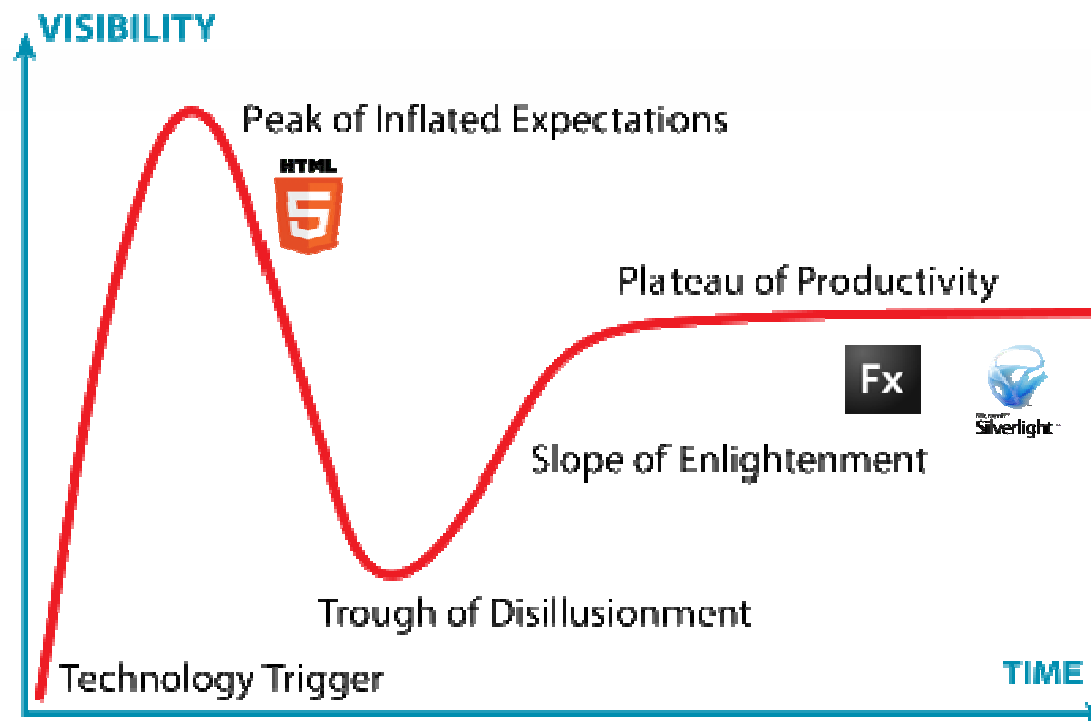


What Is ?

- A buzz word
- A nice logo
- HTML5 \sim HTML + CSS3 + JavaScript

When most people say “HTML5”, they mean
“the latest work on HTML”

Gartner Technology Hype Cycle

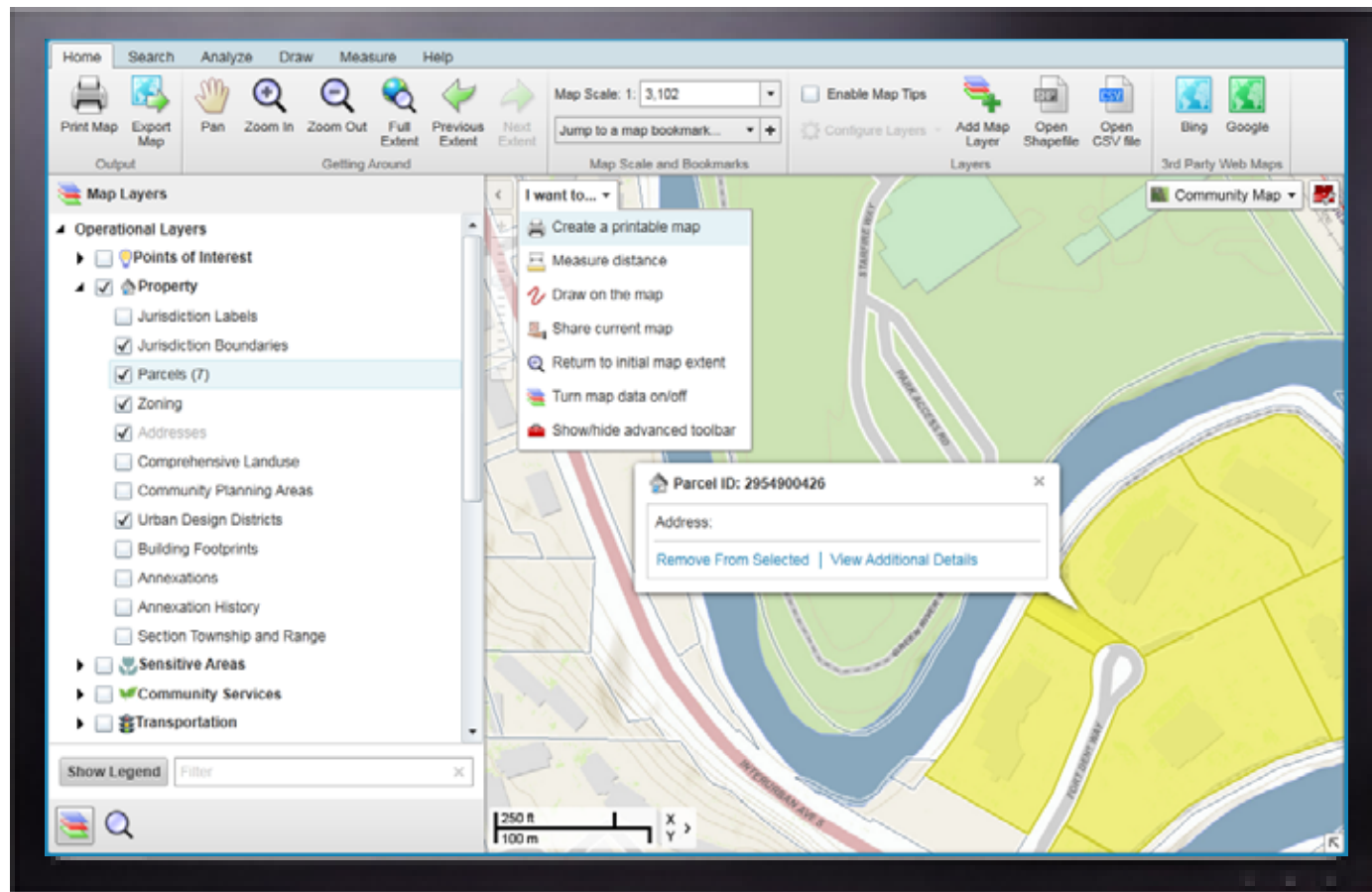


How do we choose the right viewer technology?

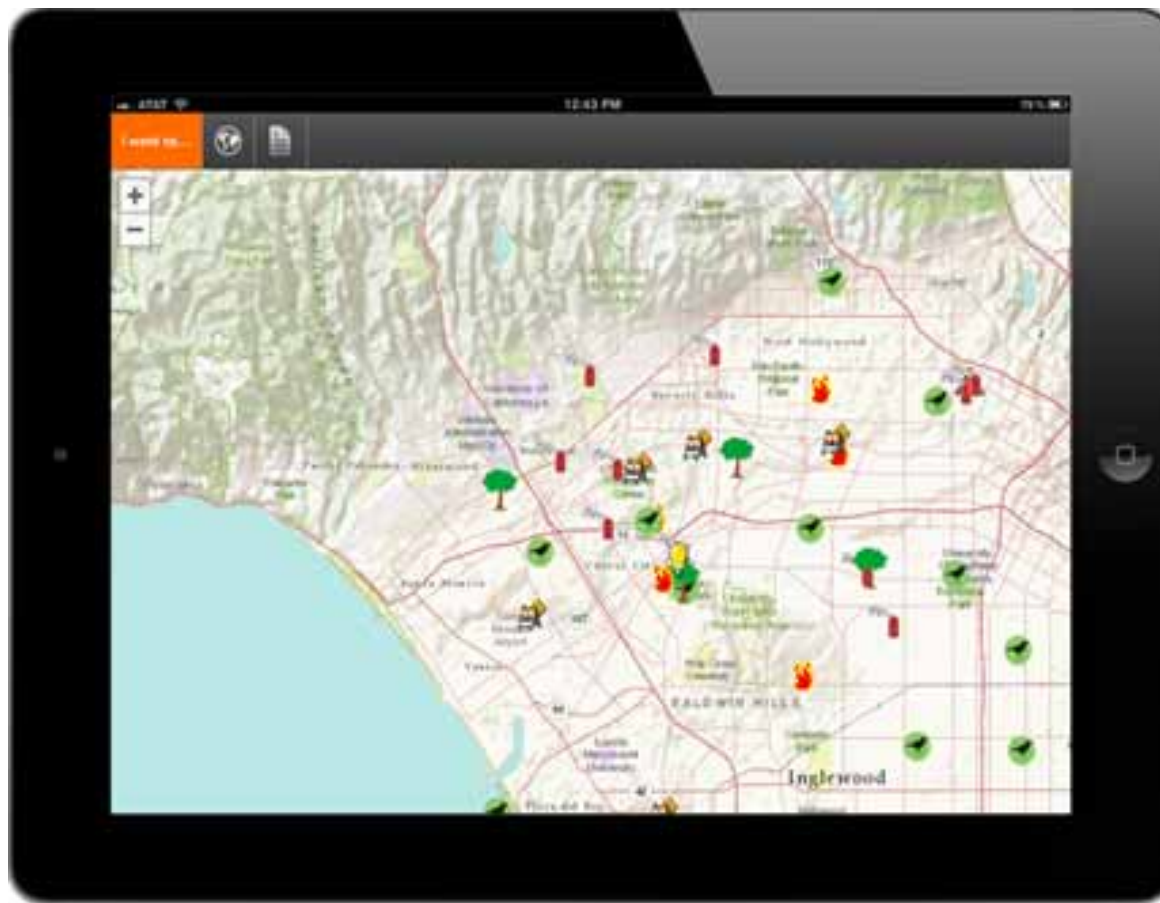
- How and where will the app be used?
Device?
- Who is the audience? Public, Internal, Power Users, Casual Users
- What key functionality is required?

“RICH vs REACH”

What Kind of App is Suitable for SL/Flex?



What Kind of App is Suitable for HTML5?



HTML5 web app VS Native app

- ✓ Target multiple platforms with a single application
- ✓ Easy for organizations to change content (less learning)
- ✓ Extremely easy deployment

but...

- ✗ Limited offline support
- ✗ Degraded user experience (think desktop VS web)
- ✗ Less access to native device capabilities (e.g., camera, contacts)

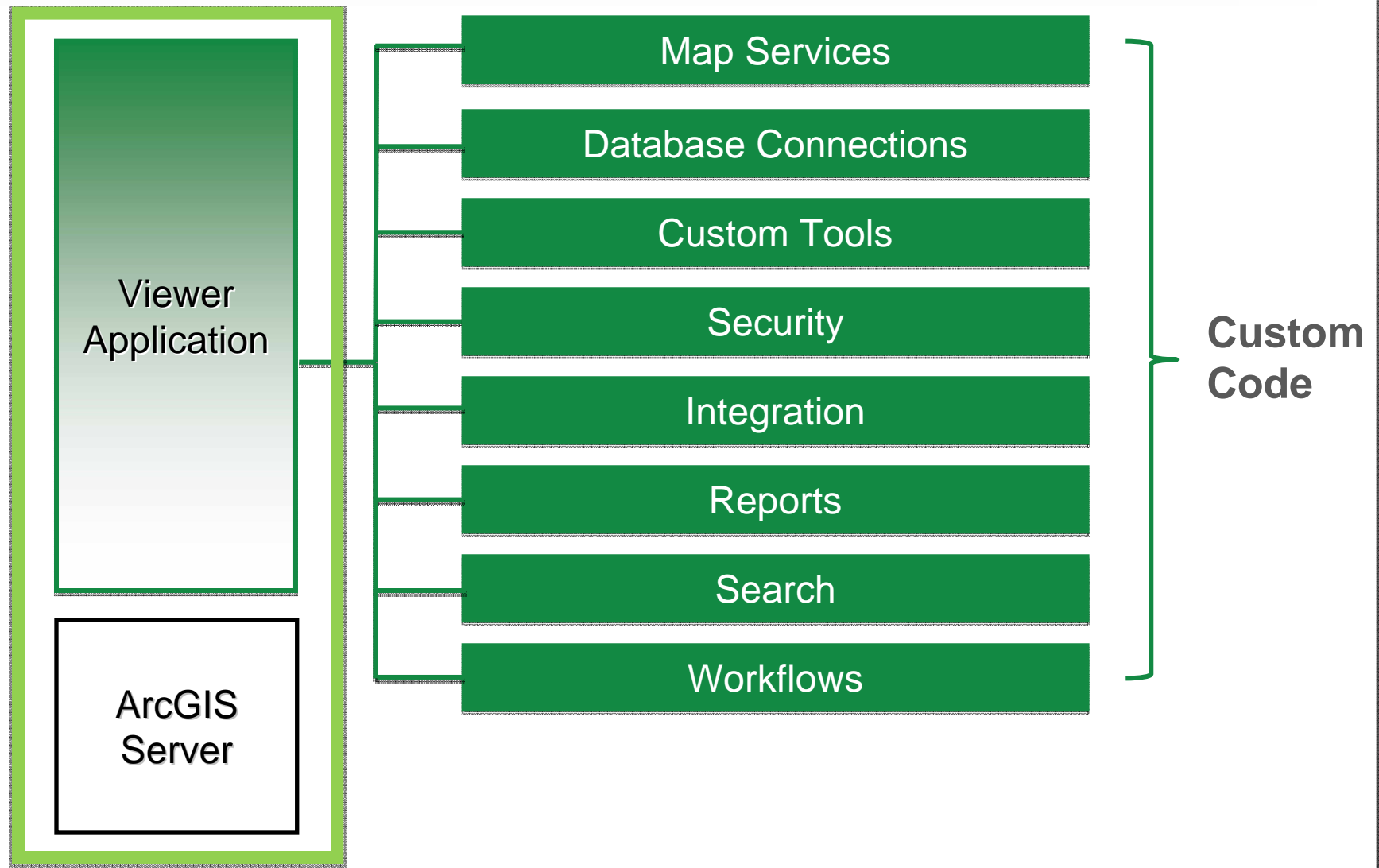
Mobile HTML5 Popularity will Increase

- ✗ Degraded user experience
 - ✓ Better mobile browsers with native HTML5 support
- ✗ Limited offline support
 - ✓ Better network coverage all over the world
 - ✓ Increasing ability to work with mobile web offline
- ✗ Less access to native device capabilities
 - ✓ More and more features available in HTML 5

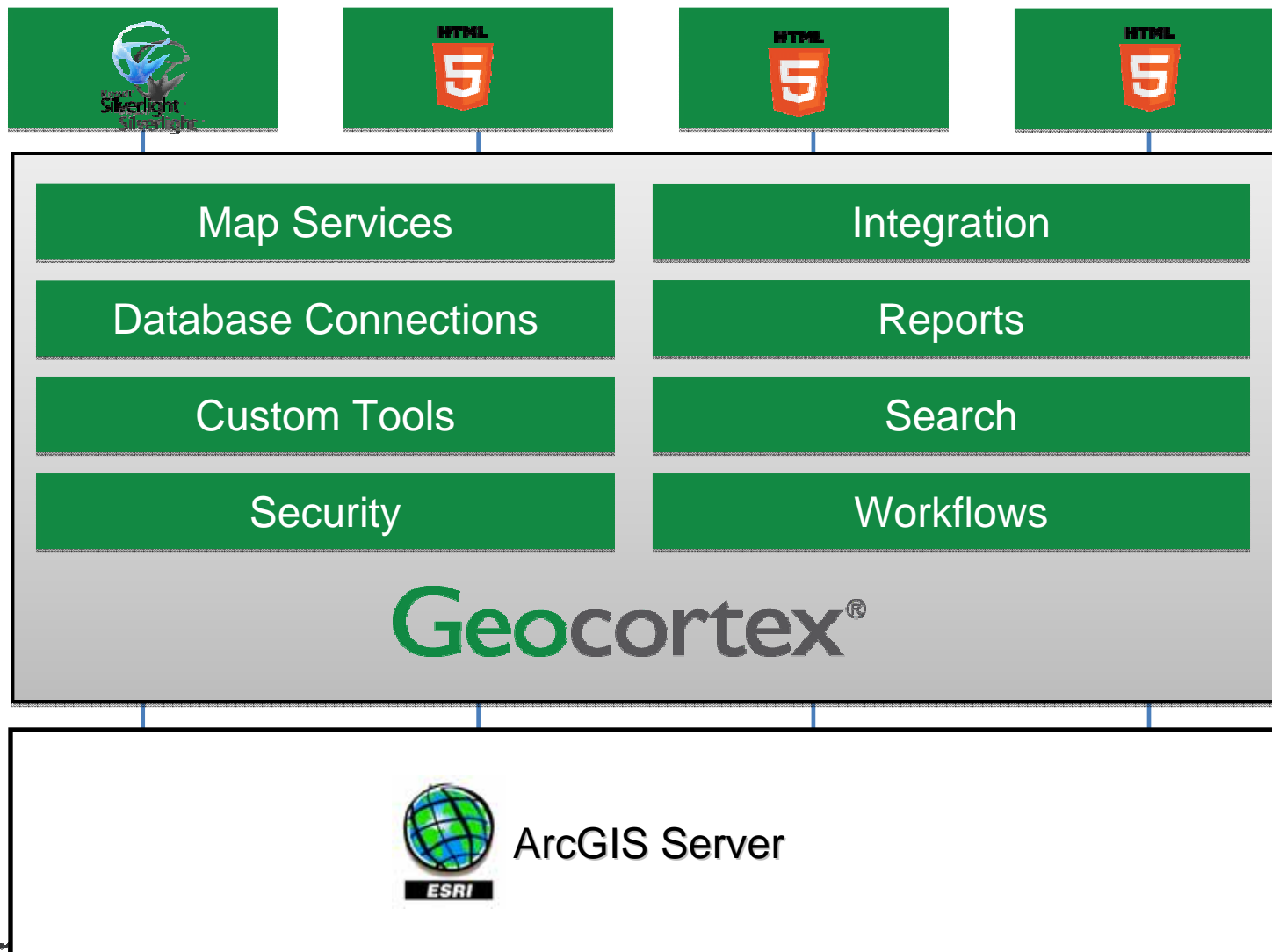


How do we build these?

“One-off” Web Mapping Applications



The SAI Approach

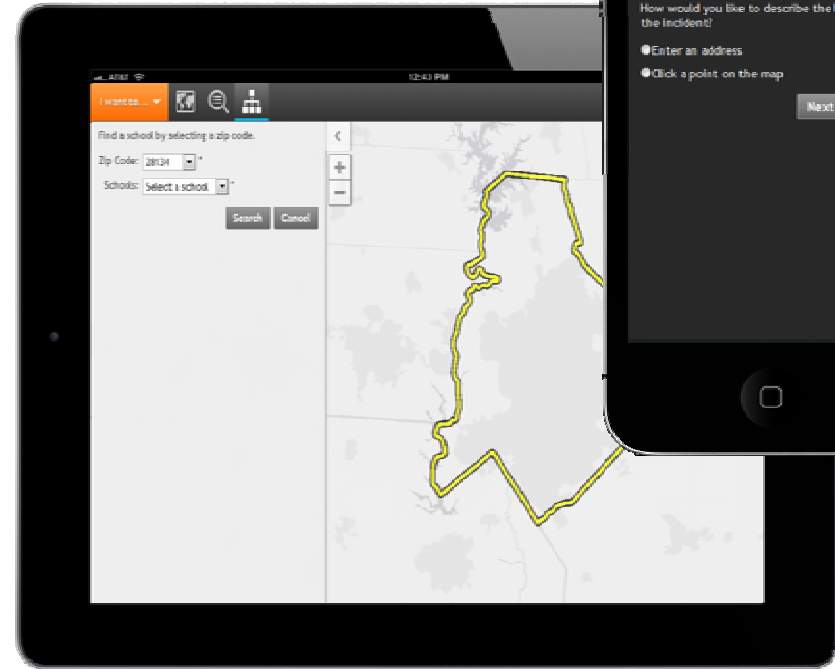
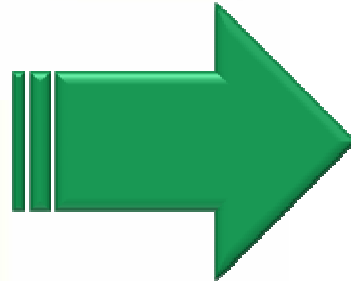
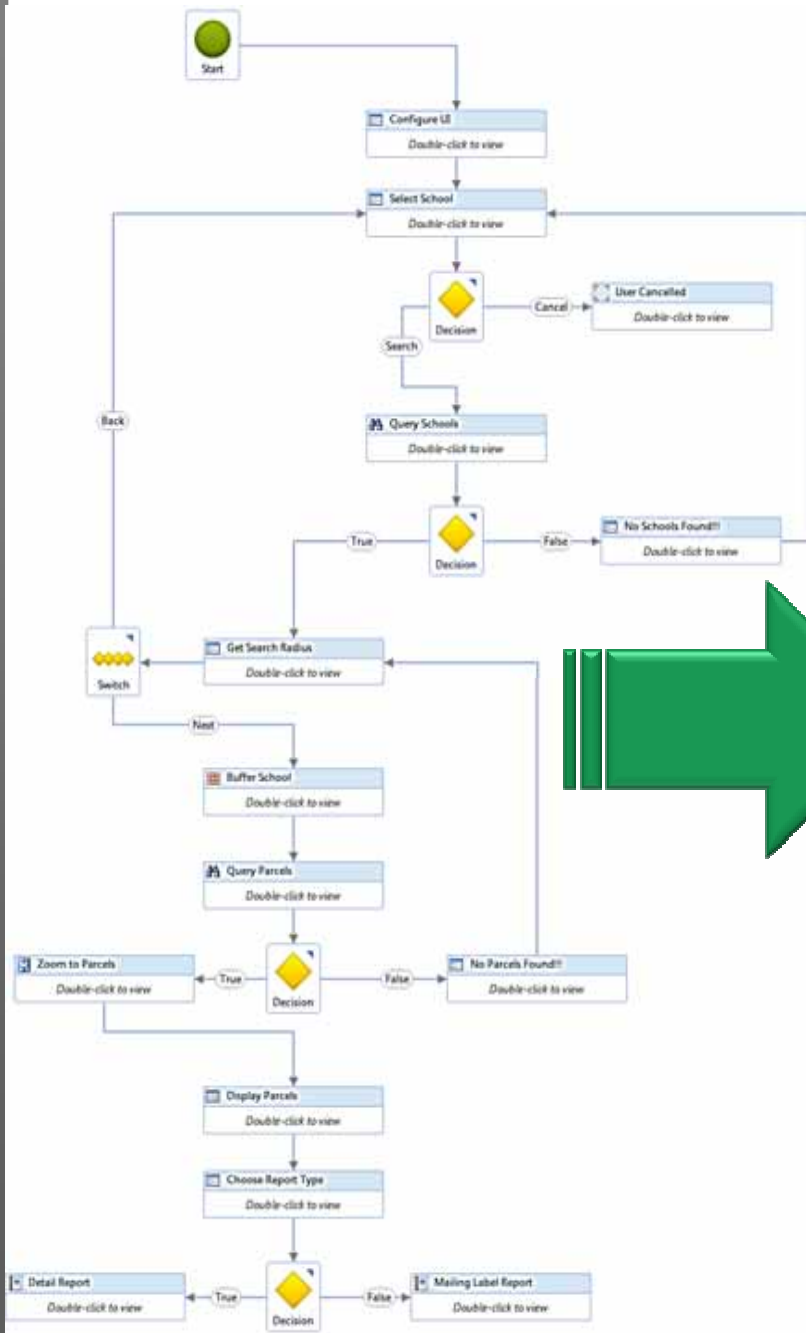




Desktop (Silverlight, HTML5)



Smartphones / Tablets (HTML5)





Live Examples

Examples using Geocortex Silverlight and HTML5 technology

Summary

- Continue to use Silverlight and Flex for full feature apps
- Use HTML5 today for...
 - Building light-weight applications
 - Simple mobile applications
 - Task-driven business processes
- Don't over-apply HTML5 in 2013 (it's still early)
 - Not yet a replacement for rich web applications
- Use a web services architecture to leverage multiple technologies at once
- Expect a mixed world for some time - define a strategy for managing multiple technologies over the next several years

Thank You
for your information

Scott Stafford-Veale
ssv@latitudegeo.com

Geocortex® | by Latitude Geographics®

www.geocortex.com | 888.578.5545

© 2012 Latitude Geographics Group Ltd. All rights reserved.