

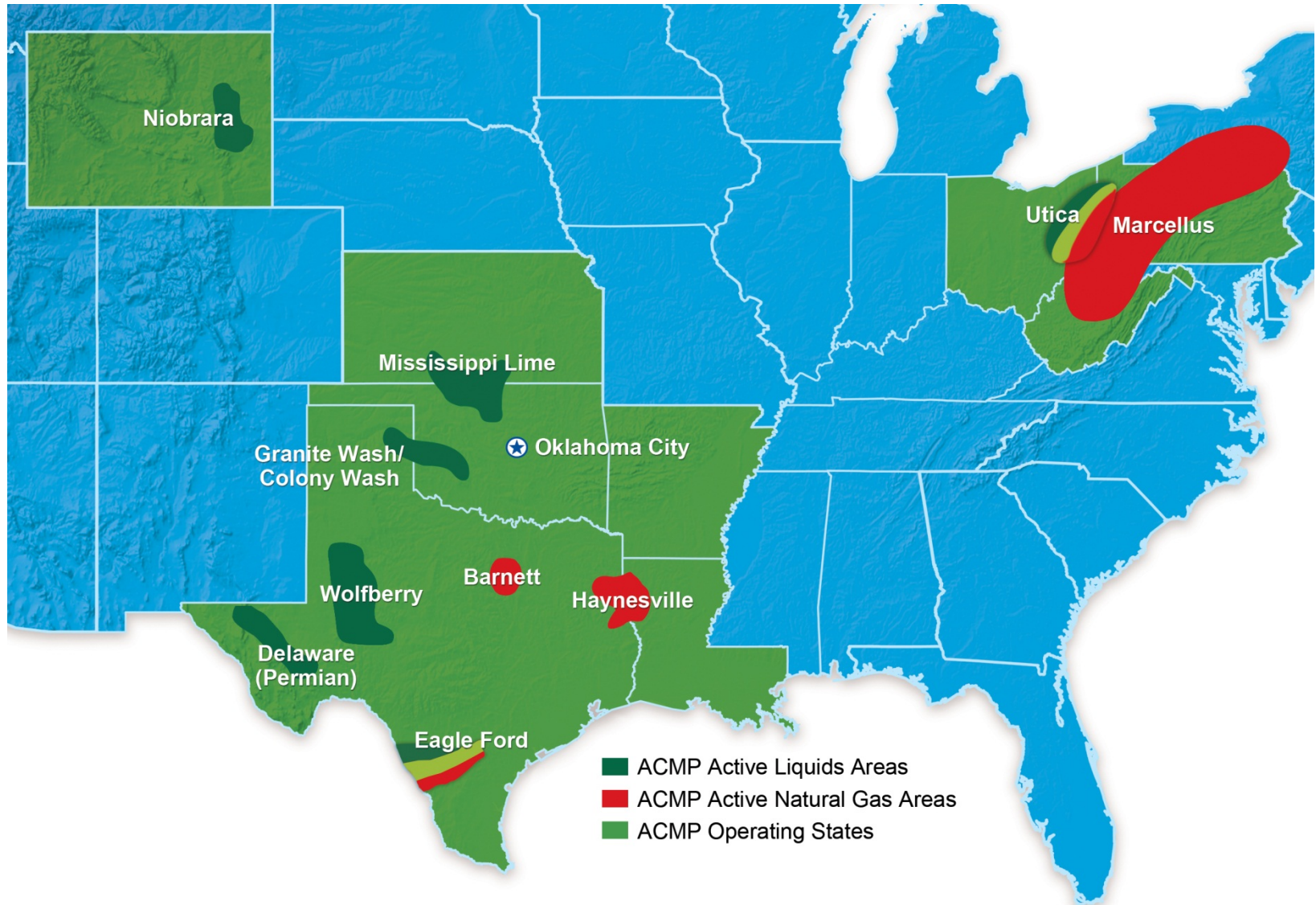


# OPERATIONS DASHBOARD – A PILOT PROJECT FOR SECURITY OPERATIONS

SCAUG 2014



# ABOUT ACCESS



# THE NEED

## ■ Access Midstream Corporate Security

- 24/7 Security Operations Center
- Tasked with ensuring employee, contractor and operations safety across 9 states and 13 field offices
- Currently using multiple programs to monitor weather threats, crime data, video surveillance and fleet vehicle locations

## ■ Difficult to get the big picture in one place

## ■ Asset locations and employee addresses not incorporated into monitoring applications outside Access' firewall



## ■ Severe Weather Threats

- Asset locations, weather alerts and radar can be used to alert employees of severe weather
- Pin point what assets may have damage from severe weather
- Tornado damage swaths can help identify employees and assets that might have been impacted by tornados or other natural disasters
- Data feed available from Weather Decision Technologies (WDT)

## ■ Fleet Vehicle Locations

- GeoFences can be used to alert Corporate Security when employees leave a designated area or enter dangerous areas



# BRAINSTORMING

- We began identifying the software we already had and additional licensed software platforms that would meet Corporate Security's needs
- **Operations Dashboard**
  - Good solution for situational awareness
  - Connects with GeoEvent Processor to get more up-to-date data
  - Allows for managing security more easily using groups
  - Comes and integrates with Portal for ArcGIS



# TECHNICAL REQUIREMENTS

- 10.2.1 Portal for ArcGIS
  - Operations Dashboard app (auto-install)
- 10.2.1 Web Adapter
- ArcGIS Server 10.1
- Portal: 1 server, 4 cores, 8 GB RAM
  - Had to be sure the server could handle the load
- ArcGIS Server: 4 servers, 4 cores each, 8 GB RAM each

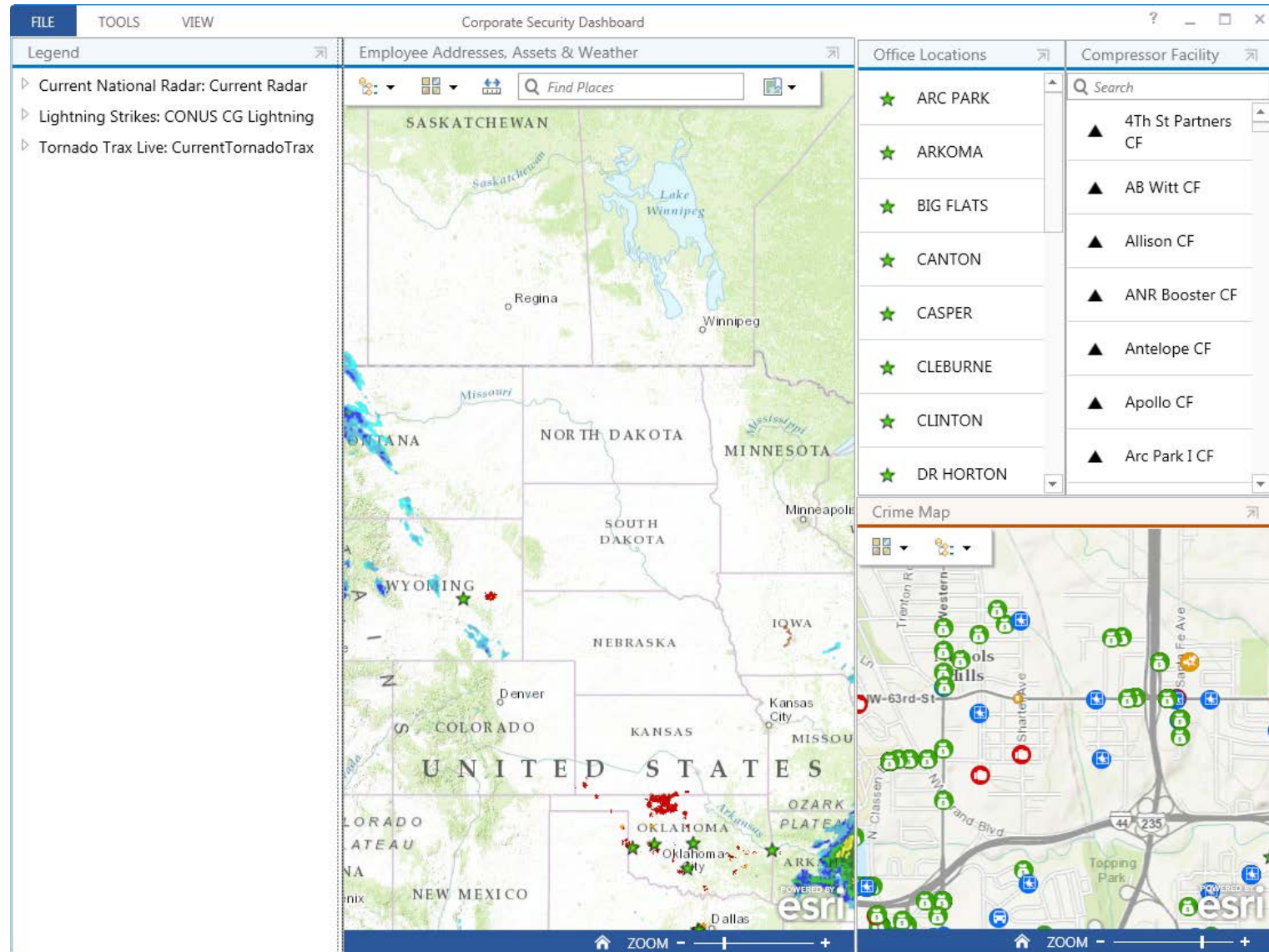


# PROCESS

## ■ To create the Operations Dashboard

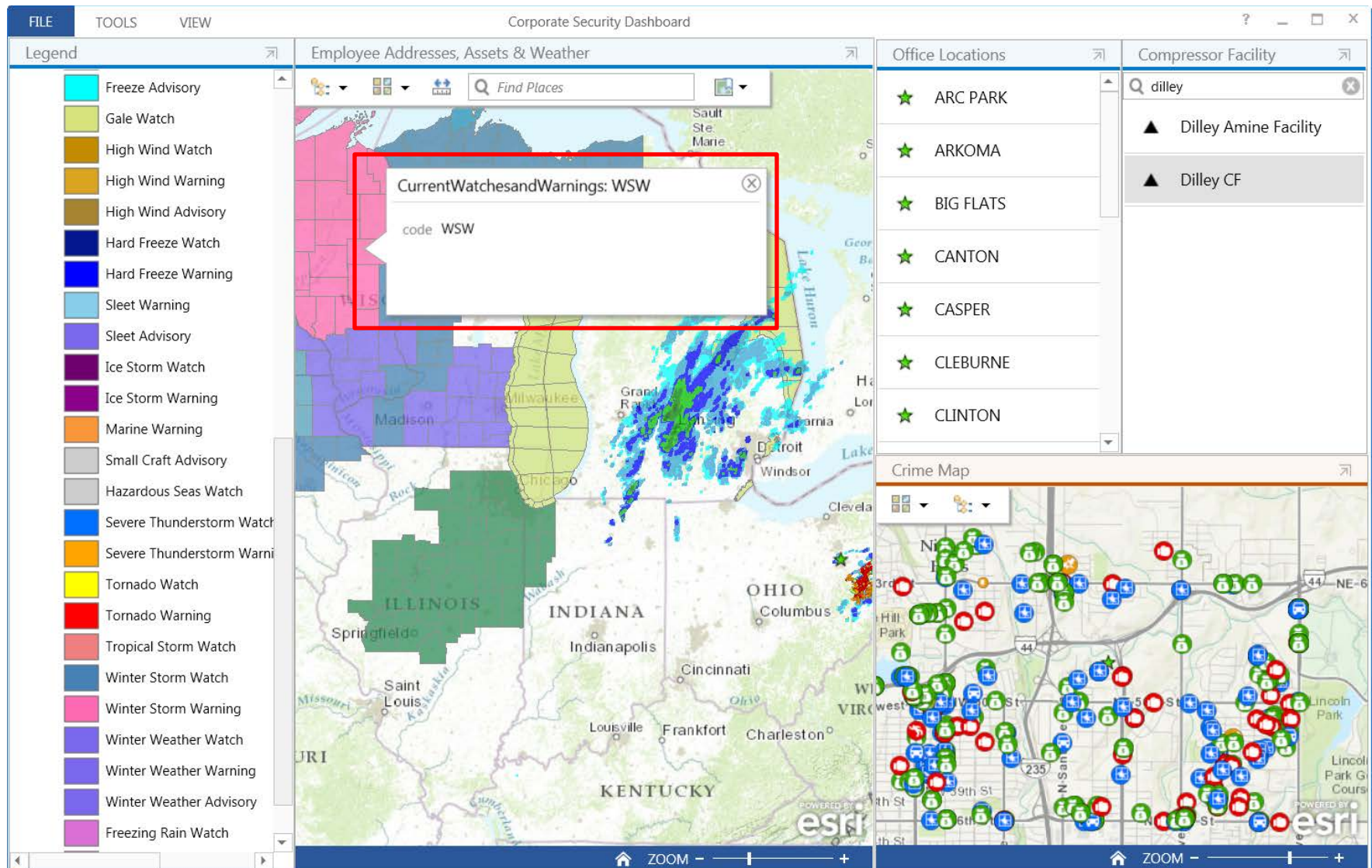
- Create and configure the mxd(s)
- Publish services to ArcGIS Server
- Configure GeoEvent services (if required)
- Create the map(s) in Portal
- Share the map(s) to a private group
- Configure operations dashboard to consume the map(s)
- Configure the operations dashboard widgets (legend, map window, lists, inset map)
- Share final operations dashboard with the private group that will use the application

# OPERATIONS DASHBOARD





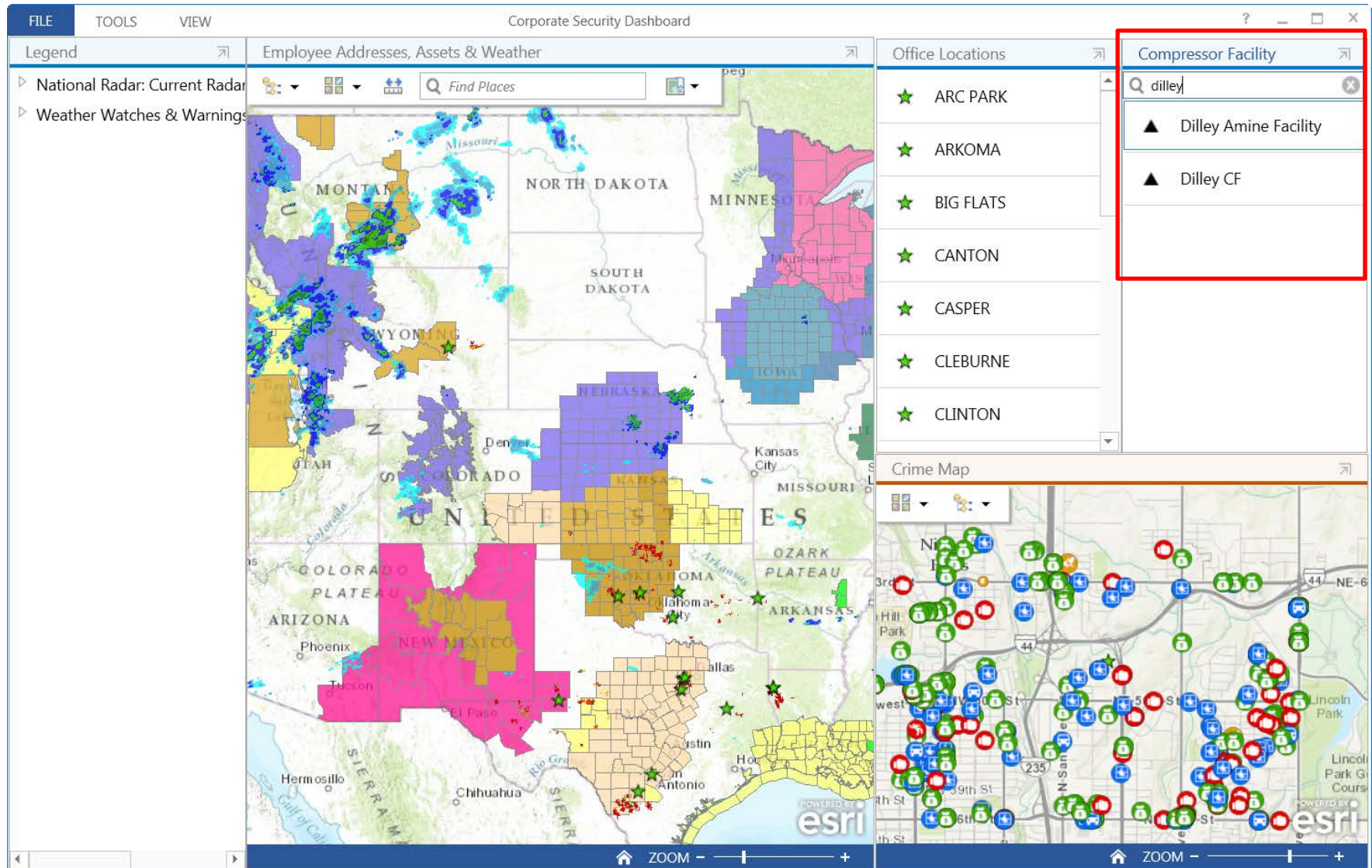
# OPERATIONS DASHBOARD



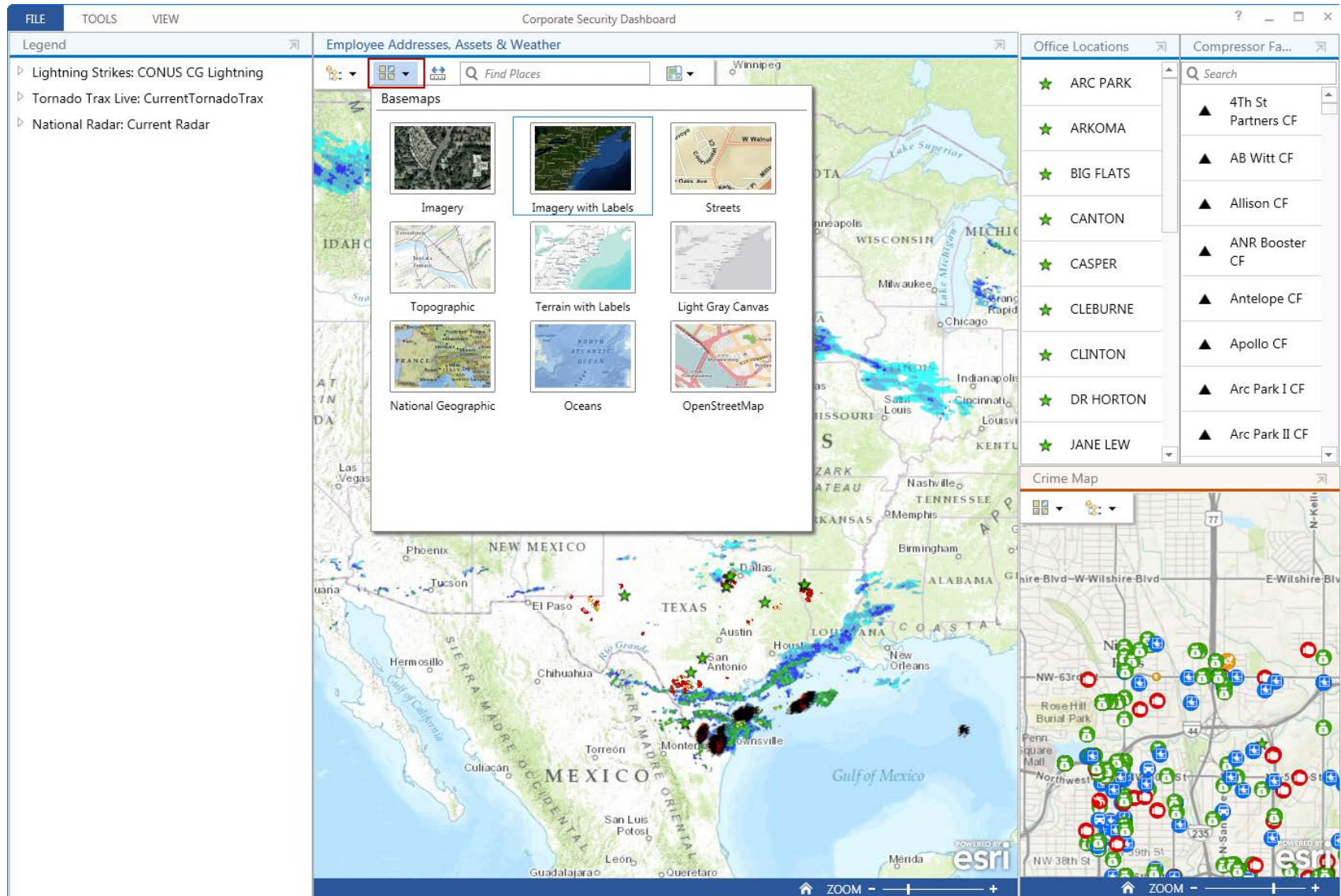




# OPERATIONS DASHBOARD



# OPERATIONS DASHBOARD



# PORTAL FOR ARCGIS CHALLENGES

- Currently no solution for searching internal data layers in services (scheduled for a Q1 release)
- No solution for promoting from one environment to another
  - Dev→Test→Production
- To bring in layers from services, they must be broken out into individual layers and then added to the map
- Cannot handle complex symbology
- Difficult to work with disparate datasets
- New product with a learning curve for technical staff





# LESSONS LEARNED

- **Involve data vendors as early as possible in the process of building your maps in Portal**
  - Telogis vehicle monitoring solution integration requires coding and information from the company's developers
  - Weather Decision Technologies
  - Esri has many use cases and experience to contribute
- **Perform all work in production environment to avoid re-creating the maps and dashboard each time a change is made**
- **Our server setup requires separate Portal licenses for each environment**
  - Planning for number of licenses for Dev, Test and Prod

# RESULTS

- Corporate Security has a solution to bring data from various vendors and in-house GIS data together in one view
- Pinpoint which employees and assets have been impacted by severe weather
- Have first responder info readily available for all operational areas



# NEXT STEPS

## ■ Phase 2

- Integration with Telogis – vehicle tracking
- Chat functionality – communicate with other people who are using the operations dashboard
- GeoFences – set up a GeoFence around a tornado warning and we get notified when an employee drives into that area
- Traffic Feed

## ■ Phase 3 – further down the line

- Add incident tracking
- Video feeds

# QUESTIONS AND CONTACTS

KATY RICH  
MANAGER – GIS  
ACCESS MIDSTREAM  
[KATY.RICH@ACCESSMIDSTREAM.COM](mailto:KATY.RICH@ACCESSMIDSTREAM.COM)

CHLOE HOWLETT  
GIS ANALYST  
ACCESS MIDSTREAM  
[CHLOE.HOWLETT@ACCESSMIDSTREAM.COM](mailto:CHLOE.HOWLETT@ACCESSMIDSTREAM.COM)

JENNIFER MCCANNE  
COORDINATOR – GIS  
ACCESS MIDSTREAM  
[JENNIFER.MCCANNE@ACCESSMIDSTREAM.COM](mailto:JENNIFER.MCCANNE@ACCESSMIDSTREAM.COM)