

Lidar; Huh that was easy.



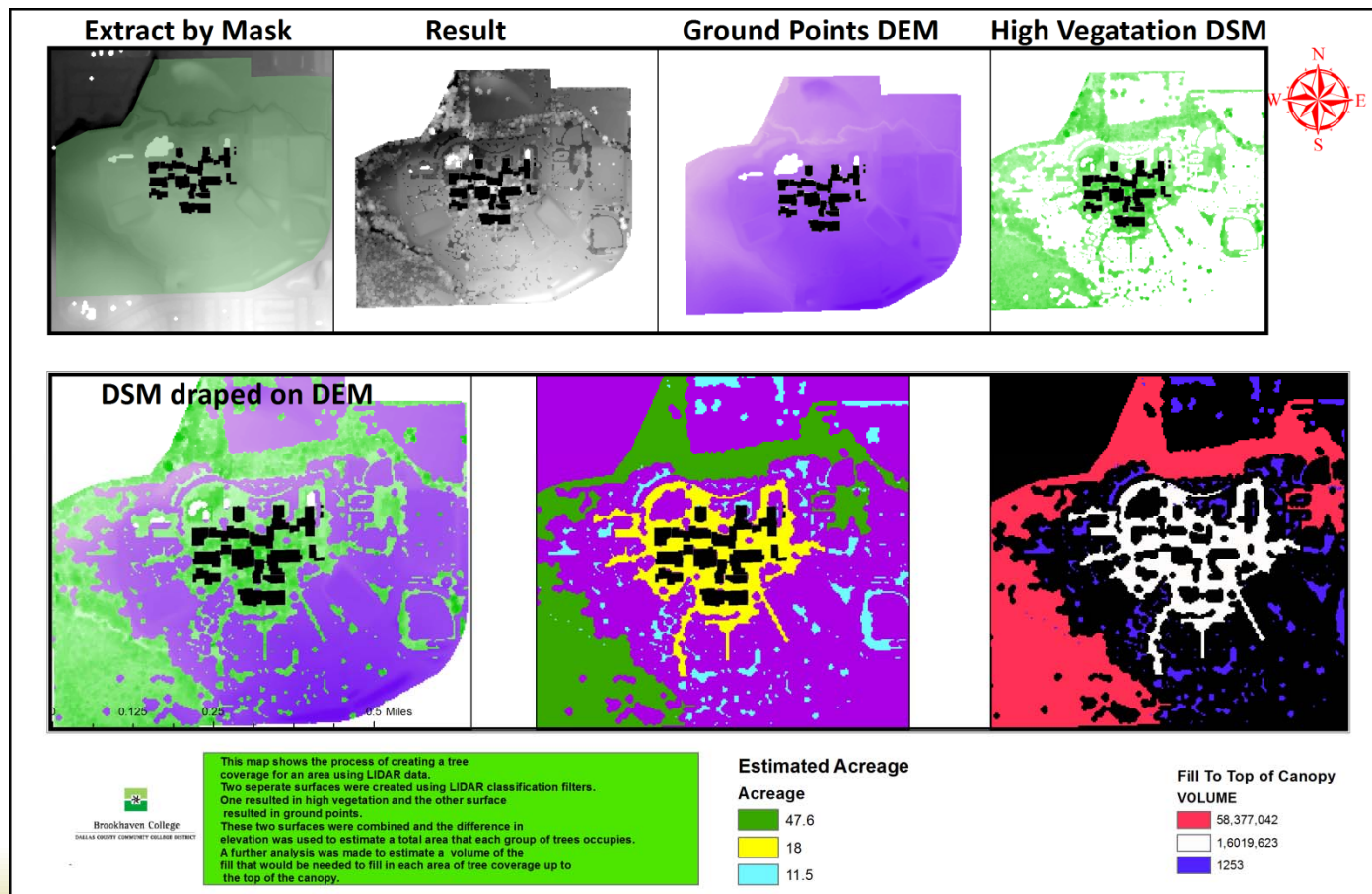
J. Scott Sires
Brookhaven College
Geotechnology Institute
www.dcccd.edu/gis

Backstory



- ❧ How many know about Lidar?
Used Lidar?
- ❧ At BHC the GIS students wanted to learn about Lidar while the College was also wanting to apply for the Tree Campus USA program.
- ❧ In a remote sensing class we dove into determining tree density and percent canopy coverage.
- ❧ Today's session is a conversation, an active discussion and series of live demonstrations.

Sample student summary



... and another



Brookhaven College Tree Density *Plant, Nurture and Celebrate Trees*



Brookhaven College 2001 Aerial Imagery

0 500 1,000 2,000
Feet



Tree Density 28% of 192 Acres

0 500 1,000 2,000
Feet



Intermediate Tree Density Development Imagery

0 500 1,000 2,000
Feet

Map Created by Robert Oleson
Date: December 06, 2013



Brookhaven College

DALLAS COUNTY COMMUNITY COLLEGE DISTRICT

Aerial Imagery NCTCAUG 2001 Data Purchase
LIDAR Data: TNIRIS 2009 | <http://www.tnris.org>



3-D Brookhaven College Tree Density Imagery

3-D Imagery created from an aerial perspective
looking north toward the main campus entrance.

Last student example

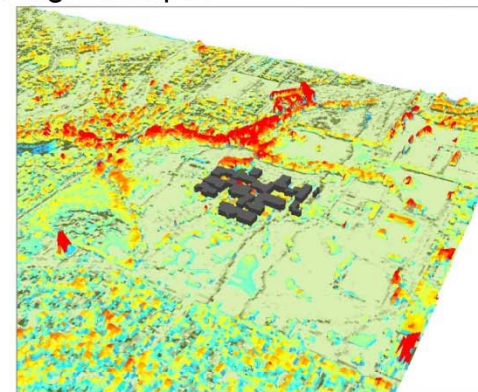


Canopy Cover of Brookhaven College Campus



0 500 1,000 1,500 2,000 Feet

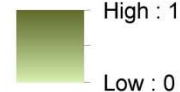
Lidar Data Source: TNRIS 2009 Lidar



3D view of campus; facing Northwest
not to scale

Campus Canopy Density

Value



Of the 192 acre area that is the Brookhaven campus
28% (54 acres) is covered by tree canopy

Campus boundary represented with red outline

Map Created by: Michael Blake
Map Created on: 12/02/13

Where, how, who?



❧ Definitions

❧ What is Lidar?

- ❧ Active sensor VS. Passive sensor RS

❧ What 'comes with' Lidar?

❧ ASPRS classifications

❧ Software (version ??)

❧ Data access

Data Access:



❧ Preview Screen Captures

❧ Tnris.ORG

❧ Search for USGS CLICK - closing

❧ Search for USGS 3DEV – about to unveil

❧ The NEW Interagency Elevation Inventory site at
USGS: www.csc.noaa.gov/inventory

Live Demonstrations



- ❧ What toolbars, tools, processes, workflows:
 - ❧ ArcCatalog
 - ❧ ArcMap 10.1
 - ❧ ArcScene 10.1

Contact Scott



✉ ssires@dcccd.edu

✉ 972-860-4362

✉ Program Website: www.dcccd.edu/gis