

FIRST RESPONDERS AND GIS PROFESSIONALS:

SHARING FIRST-HAND EXPERIENCES AND SOLUTIONS

Scott L. Trapolino, GISP

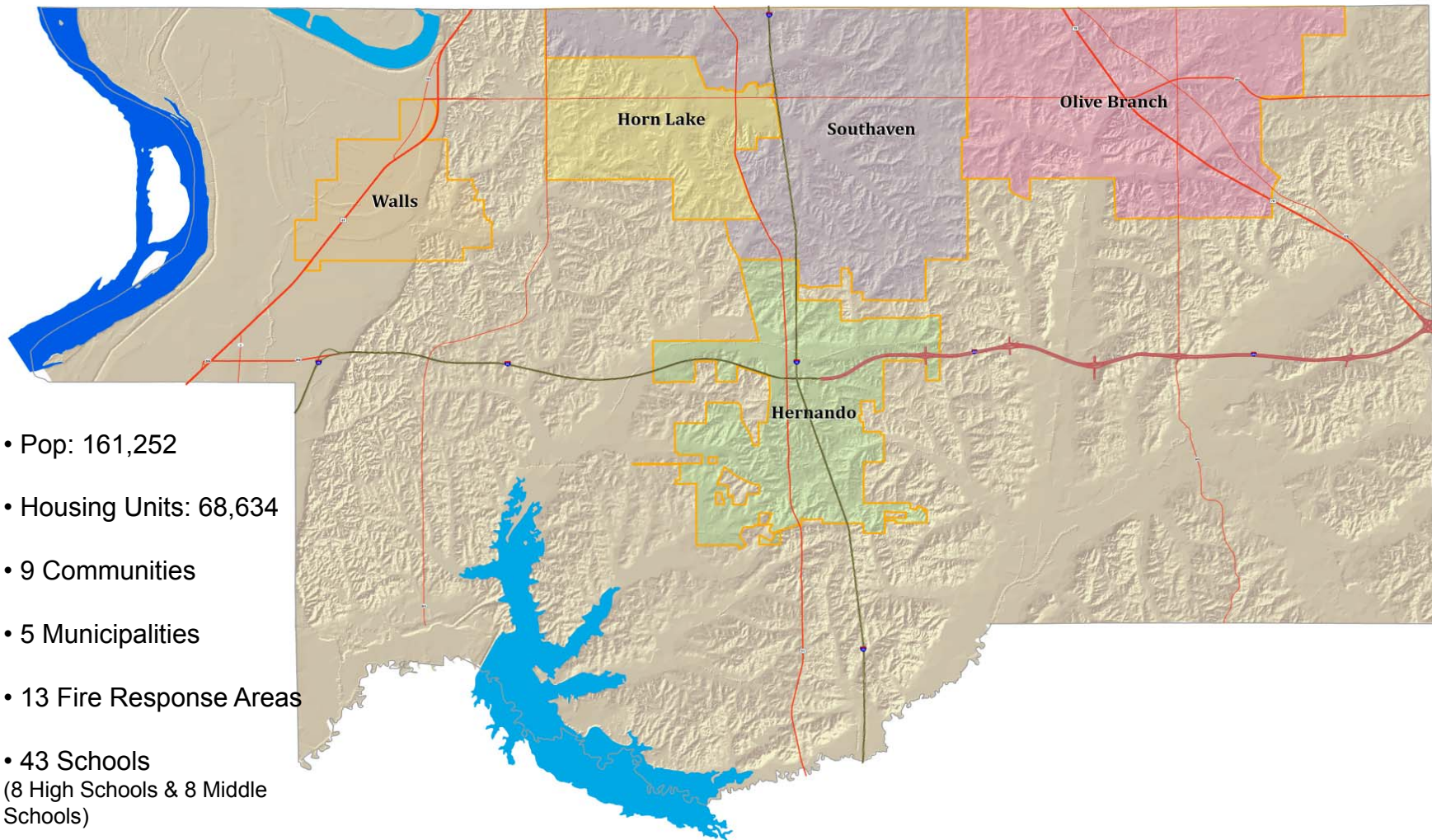
GIS Analyst &
Eudora Fire Department Captain
DeSoto County, Mississippi

**The real value of GIS is NOT
in the response phase, by
then it's too late...**

Focus

- ④ Communication
- ④ EMA Needs Assessment
- ④ Collecting Critical Infrastructure Data
- ④ Sharing Data and Maps

DeSoto County, MS



Communication

Municipal, County, Regional... GIS Professionals have great connections and lines of communication.

BUT there is a disconnect in language between Emergency Managers and GIS Professionals.

Can you speak the Language?

- ICS Courses on Command Structure and Terminology
- Emergency Incident and Response Training
- Working with first responders and emergency management individuals in your area can breakdown communication barriers and open new opportunities.
- Ask Questions

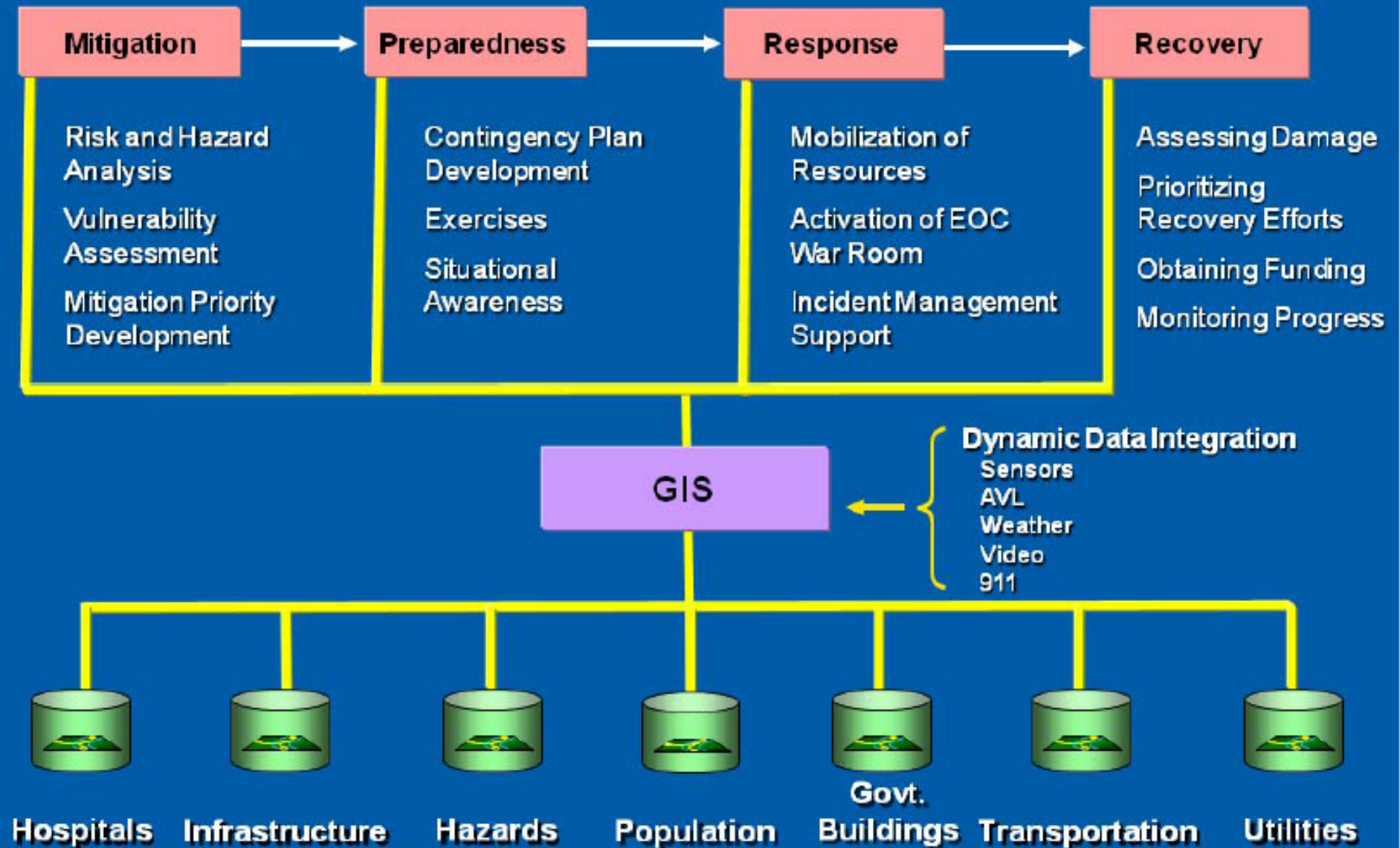
Key Elements of a GIS

- How to create a Needs Assessment and Implementation Plan:
 - Emergency Support Functions (ESF's)
 - Pre-Planning Workflows and Incident Action Plans (IAP's)
 - What information is Available and What needs to be collected?
 - Focus on Applications (Not Data Driven)

Emergency Support Functions (ESF)

- ⦿ ESF #1 – Transportation
- ⦿ ESF #2 - Communications
- ⦿ ESF #3 - Public Works and Engineering
- ⦿ ESF #4 - Firefighting
- ⦿ ESF #5 - Emergency Management
- ⦿ ESF #6 - Mass Care, Housing, and Human Services
- ⦿ ESF #7 - Resource Support
- ⦿ ESF #8 - Public Health and Medical Services
- ⦿ ESF #9 - Search and Rescue
- ⦿ ESF #10 - Oil and Hazardous Materials Response
- ⦿ ESF #11 - Animals, Agriculture and Natural Resources
- ⦿ ESF #12 - Energy
- ⦿ ESF #13 - Public Safety and Security
- ⦿ ESF #14 - Long-Term Community Recovery
- ⦿ ESF #15 - External Affairs

GIS for Emergency Management



Data Collection

- ① Define key data that will need to be accessed

- Address Points
- Street Centerline
- Fire Hydrants
- Critical Infrastructure Layers

How do we collect this data?

- ⦿ Pay an engineering firm to collect it...

(no money in the budget)

- ⦿ Collect it ourselves...

(we don't have the manpower)

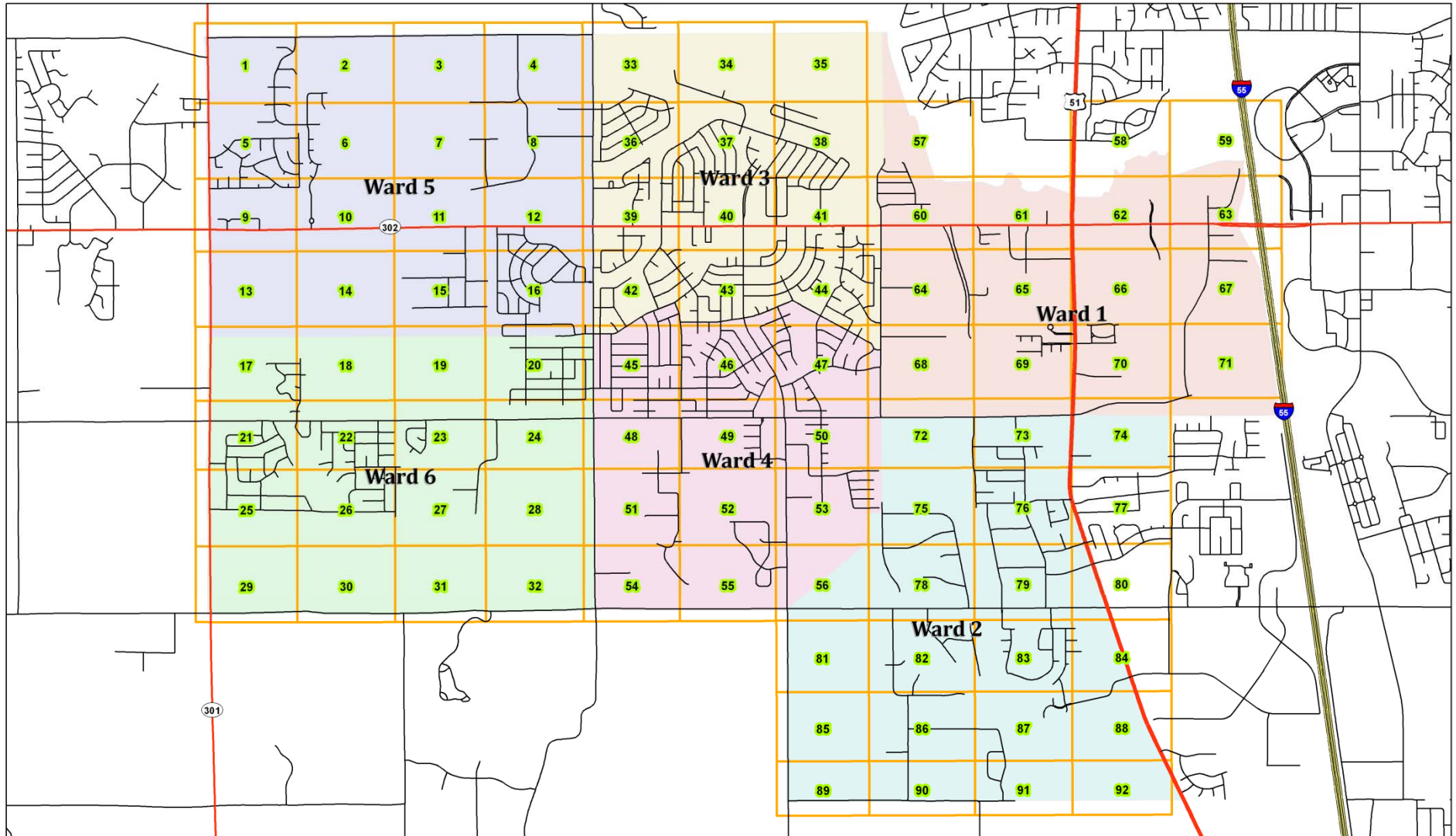
- ⦿ Let's get everyone involved...

(Police Officers, Fire Fighters, Community Volunteers,
Schools, etc....)

Creating Field Maps

- ④ Technology Constraints
- ④ What is the easiest data collection method?
- ④ PAPER MAPS.....

Horn Lake Police Department: Addressing Map Book



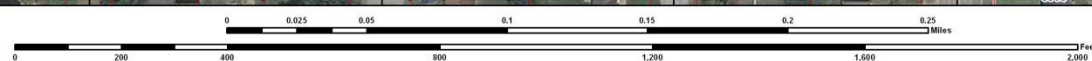
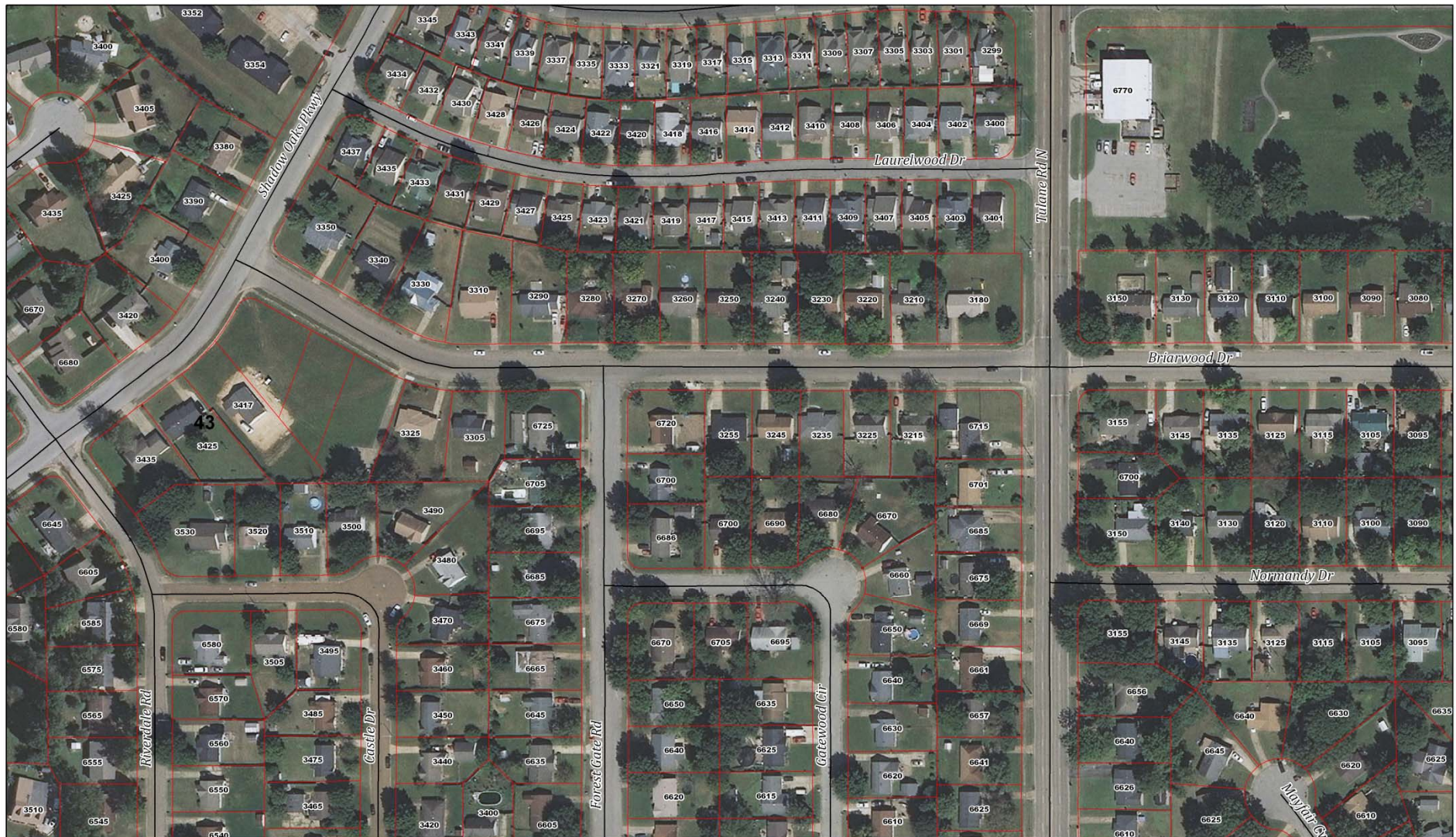
REFERENCE PAGE

Disclaimer: DeLone County, GE Department, its employees, agents and personnel, MAKES NO WARRANTY OF MERCHANTABILITY OR WARRANTY FOR FITNESS OF USE FOR A PARTICULAR PURPOSE, OR ANY OTHER WARRANTY WHETHER EXPRESS OR IMPLIED, WITH RESPECT TO THE INFORMATION CONTAINED ON THIS MAP. Any user of this information accepts the same AT IS, WITH ALL RISKS, and assumes all responsibility for the use thereof, and further covenants and agrees to hold the County, its employees, agents and personnel, harmless from and against any damage, loss or liability resulting from any use of the information.

Horn Lake Police Department: Addressing Map Book

Ward 3

Pg 43



1:1,477

Disclaimer: Delta County GIS Department, its employees, agents and personnel, MAKE NO WARRANTY OF MERCHANTABILITY OR WARRANTY FOR FITNESS OF USE FOR A PARTICULAR PURPOSE, OR ANY OTHER WARRANTY WHETHER EXPRESS OR IMPLIED, WITH RESPECT TO THE INFORMATION CONTAINED ON THIS MAP. Any use of this information accepts the same at its own risk, and assumes all responsibility for the use thereof, and further warrants and agrees to hold the County, its employees, agents and personnel, harmless from and against any damages, loss or liability arising from any use of the information.

DeSoto County Geographical Data Committee

Street Address Data Standard

Field	Field Type	Character Length	Example	Description	Standard
LOCATION	Text	60	Laurelwood, Pizza Hut, Civic Center Apts.	Name of location (Business, Apartment, Subdivision)	DeSoto
NUMBER	Long Integer	10	5589, 1255 1/2, 5787 A	Location address number	NENA
PREFIX_DIR	Text	2	N, S, E, W, NE, NW, SE, SW	Leading Street Direction	NENA
STREET_NAM	Text	60	Lake Forest	Only the Street Name (NO Direction or Type)	DeSoto
STREET_TYPE	Text	5	DR, CV, ST, PKY	Street Type	NENA
SUFFIX_DIR	Text	2	N, S, E, W, NE, NW, SE, SW	Trailing Street Direction	NENA
FULL_ADDR	Text	100	6718 Lake Forest DR W	Full Address	FGDC and NENA
ZIP_CODE	Long Integer	5	38632	Only Five Digit Zip Code	NENA
ESN	Long Integer	10	100-123,	Emergency service number associated with structure.	NENA
COMMUNITY	Text	60	SOUTHAVEN, INDEPENDENCE, HERNANDO	Municipality or Community	DeSoto
SITE_TYPE	Text	60		Type of Structure - (Classification Guide?)	DeSoto
HAZ_MAT	Text	250	Phosphorus trichloride, Phosphine, Bromine	Hazardous Materials Stored in Building (If none, classify "NO")	DeSoto
BLDG_NO	Text	20	1, 2, 3, A, B, C, 12B,	Unique Identifier for buildings containing Multiple Residents, Suites, Multiple Addresses	DeSoto
BLDG_UNITS	Text	20	A-D, 1-4, Multiple floors (A-D, E-H, I-J)	Address ranges by floor in multi-residential buildings	DeSoto
ADDR_RANGE	Long Integer	10			
X_LAT	Double	20	34.960922	Latitude Coordinates in Decimal Degrees	FGDC and NENA
Y_LONG	Double	20	-90.033417	Longitude Coordinates in Decimal Degrees	FGDC and NENA

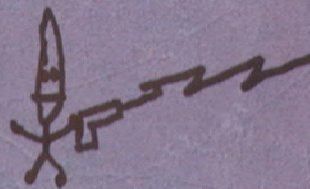








TAKE
ME TO
YOUR
LEADER



69

69

51

Sharing Data and Maps

● Mobile Maps

- Avenza PDF Maps
- TerraGo GeoPDF's
- Arc Reader and Arc Explorer





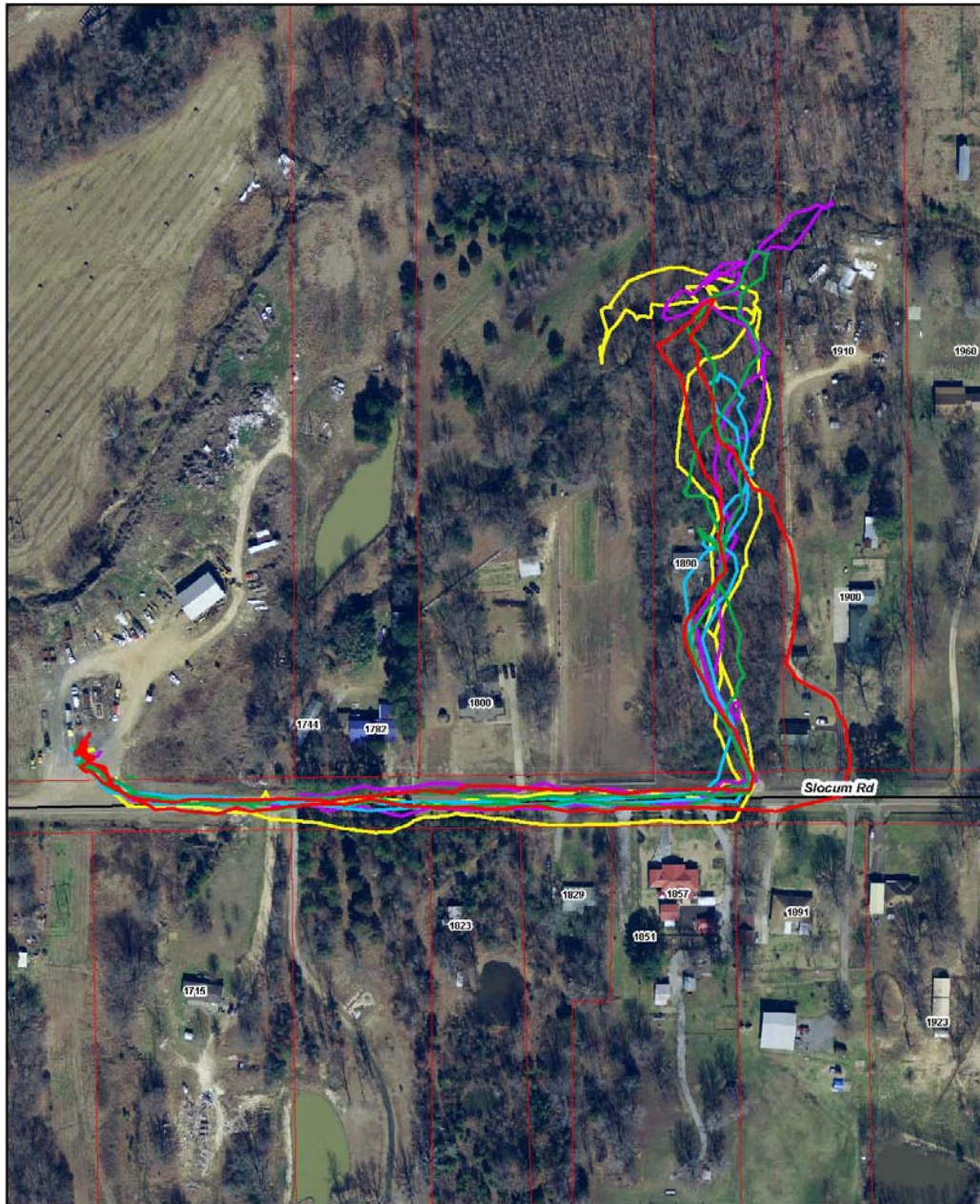








Accountability

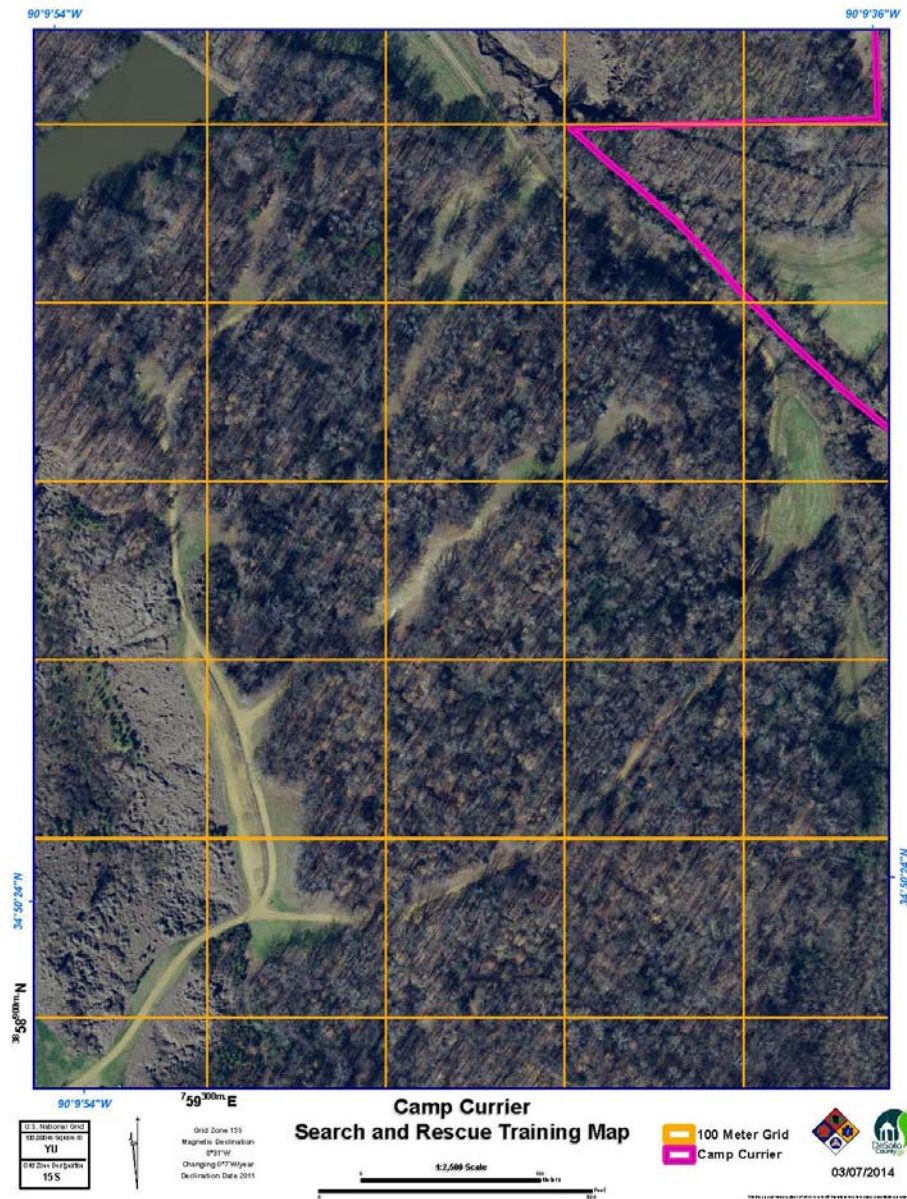


Each Color Track Represents Area Searched
11-22-2013
0 100 200 400 600 800 1000 Feet

1890 Slocum Road
DeSoto County Search and Rescue



Create Templates for Fast Map Production....





2011 Mississippi River Flooding

Tunica County, Mississippi





MEMA

GIS at the State Level

Questions?

Contact Information:

Scott L. Trapolino, GISP
GIS Analyst

365 Losher St. Suite 200

Hernando, MS 38632

Office: 662-469-8019

Direct: 662-469-8143

Cell: 901-371-1113

GIS Website: www.desotocountygis.com