

# Expanding the Reach and Power of Your Data with HERE Maps



here

Travis Franz, GISP  
HERE

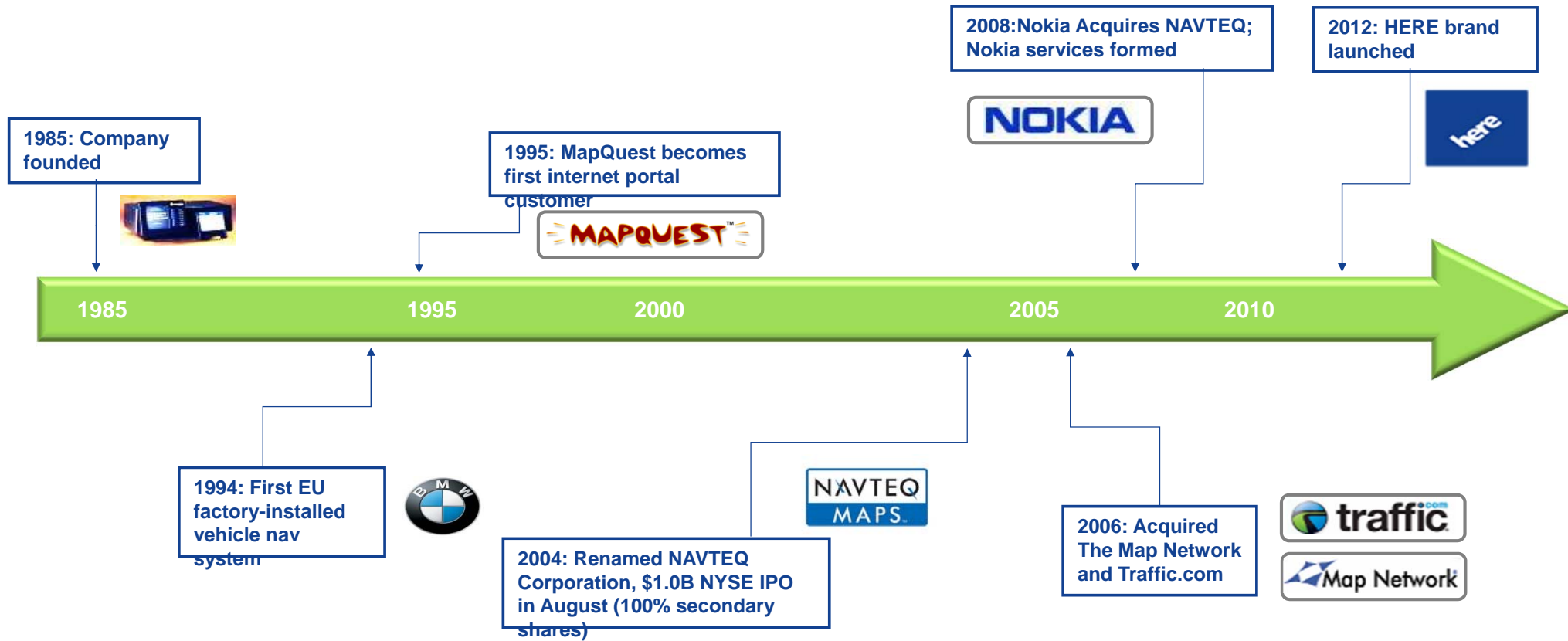
# Agenda

- HERE
  - Who we are, what we do, history and company background
- Map Building – How we do it and how you can contribute!
  - Field Data Collection
  - Production Teams
  - Local Source Data
  - Map Creator, Expert Communities



here

# HERE – Historical Timeline

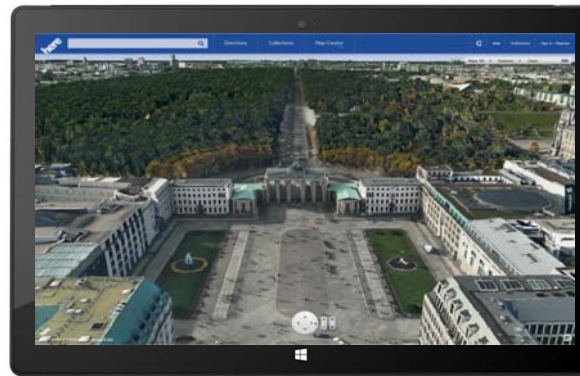
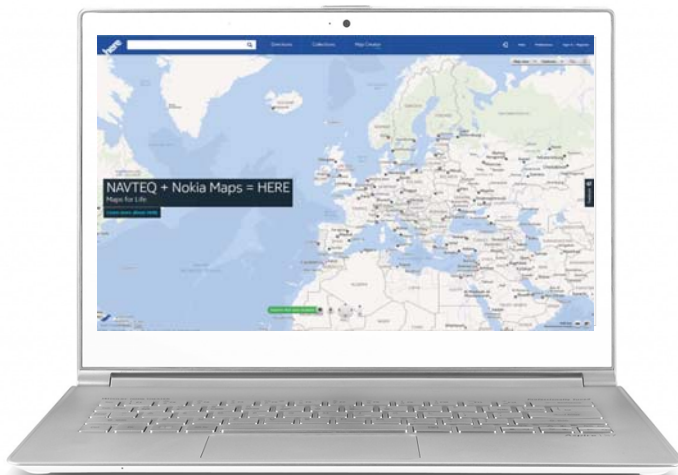


# Strong Customer Relationships



# We make maps!

We make a navigable map database that is used in a variety of end products, computers, tablets, phones and navigation devices.



# Maps.....



Highest quality maps with  
fresher data and faster mapping



## KEY FACTS AND FIGURES

**196**

countries

**93**

countries with turn-  
by-turn navigation

**50+**

languages

**147M**

map tiles served  
every day

**80K+**

Local sources used

## ...with unparalleled assets

Real World  
Computable  
Content

Sensed  
Behavior  
Smart Data

Powerful  
Platform  
Experiences

**1B**

devices in  
use around  
the world

**100M**

uses of NAVTEQ/HERE  
Map data every day

**175M**

navigation-enabled  
devices globally

**11B**

probe points  
collected monthly



# How do we build and maintain the map?



# The Power of Up-To-Date Maps



## Did you know that...?

- **92% of consumers state that the navigation system is somewhat or very important to their overall vehicle satisfaction<sup>1</sup>**
- **An outdated map is a leading contributor of unsatisfactory navigation experience<sup>2</sup>**
- **Outdated map issues generate 30% of all call center costs<sup>3</sup>**
- **62% of consumers would buy a map update if one would be available<sup>4</sup>**

1. Nokia L&C 20011 MapCare Value Trade-off Study  
2. JD Powers 2011 Navigation Usage and Satisfaction Study  
3. Nokia L&C 2011 customer feedback  
4. Nokia L&C 2010 Map Update Research Findings

# Map Building, Map Maintaining

Content —●



Methods —●

Field Data  
Collection

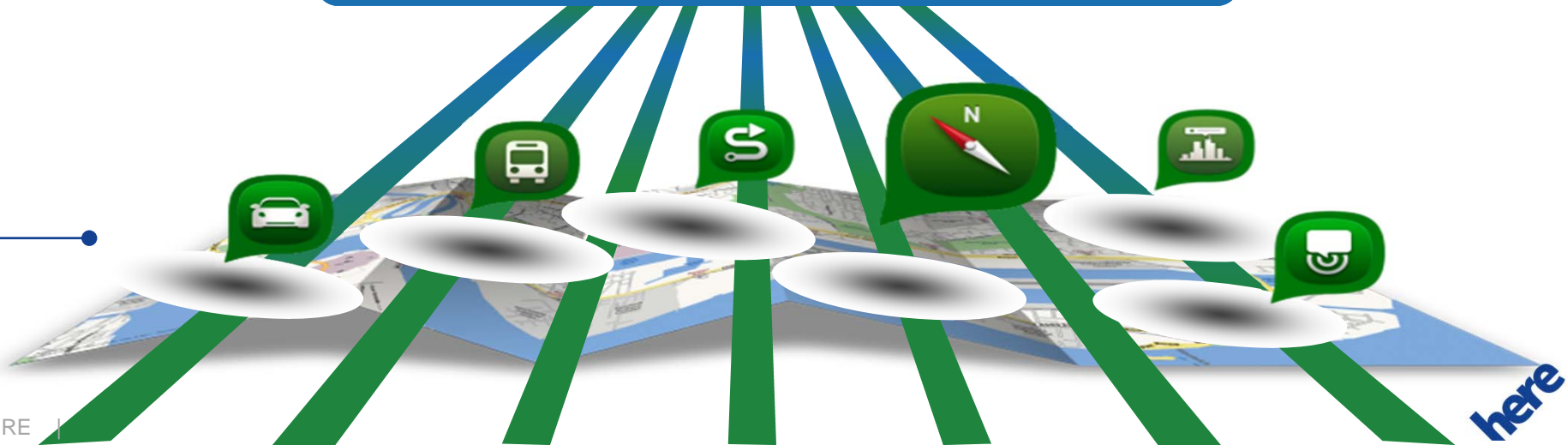
Production  
Teams

Local Data  
Sources

End Users/  
Community

Smart Data

Map —●

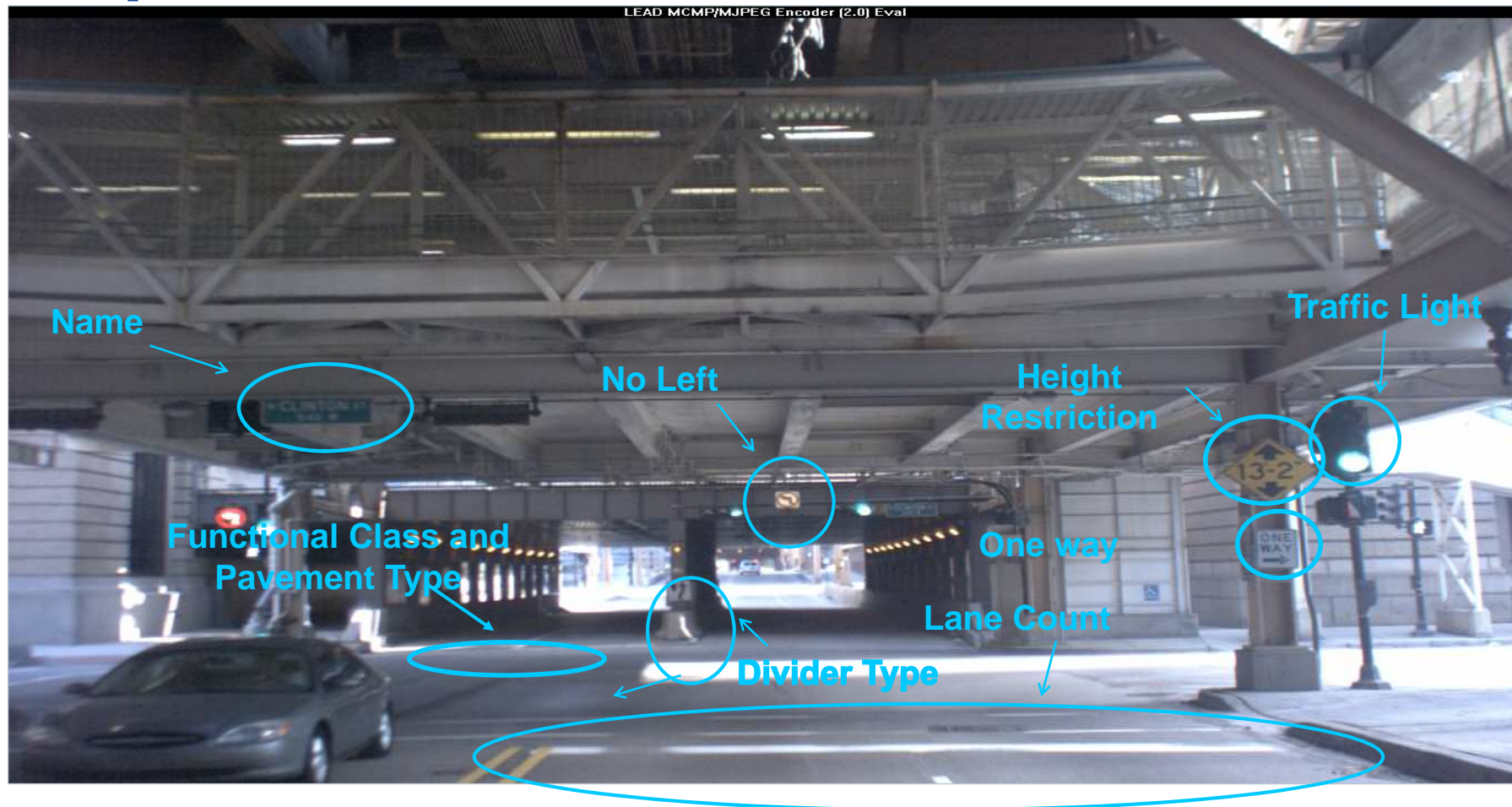


# Field Data Collection

- Local offices
    - 228 globally, 67 in US
  - Still driving the roads
    - Competitive advantage
  - Acquisition of Earthmine, Inc.
    - November 2012
- Strengthening data collection processes  
Supplement to NAVTEQ True



# Example of Attributes Collected



# Map Building, Map Maintaining

Content —●



Methods —●

Field Data  
Collection

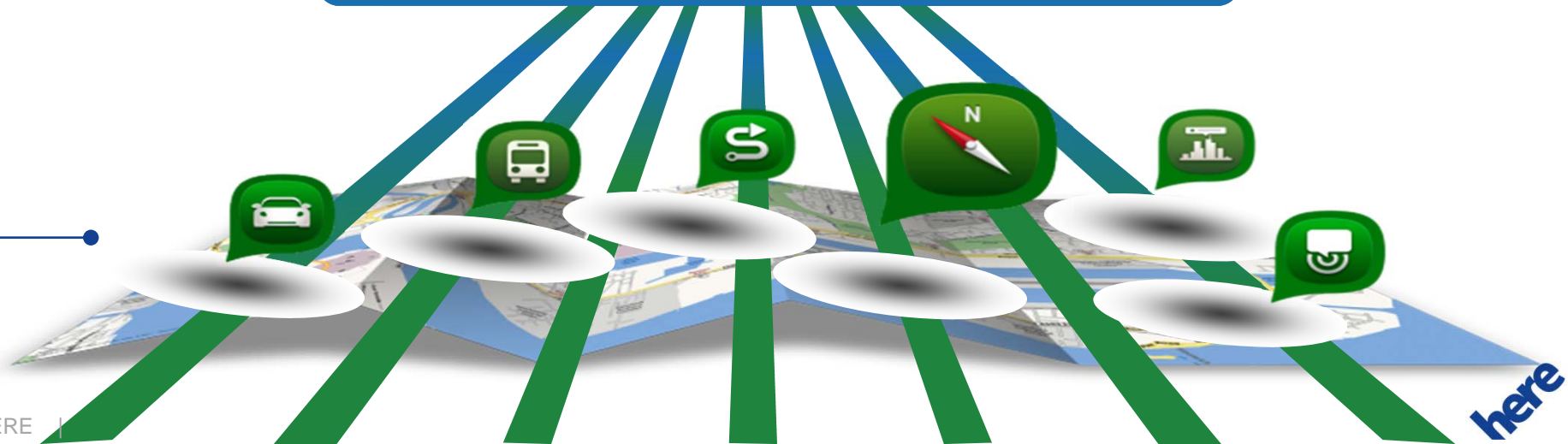
Production  
Teams

Local Source  
Data

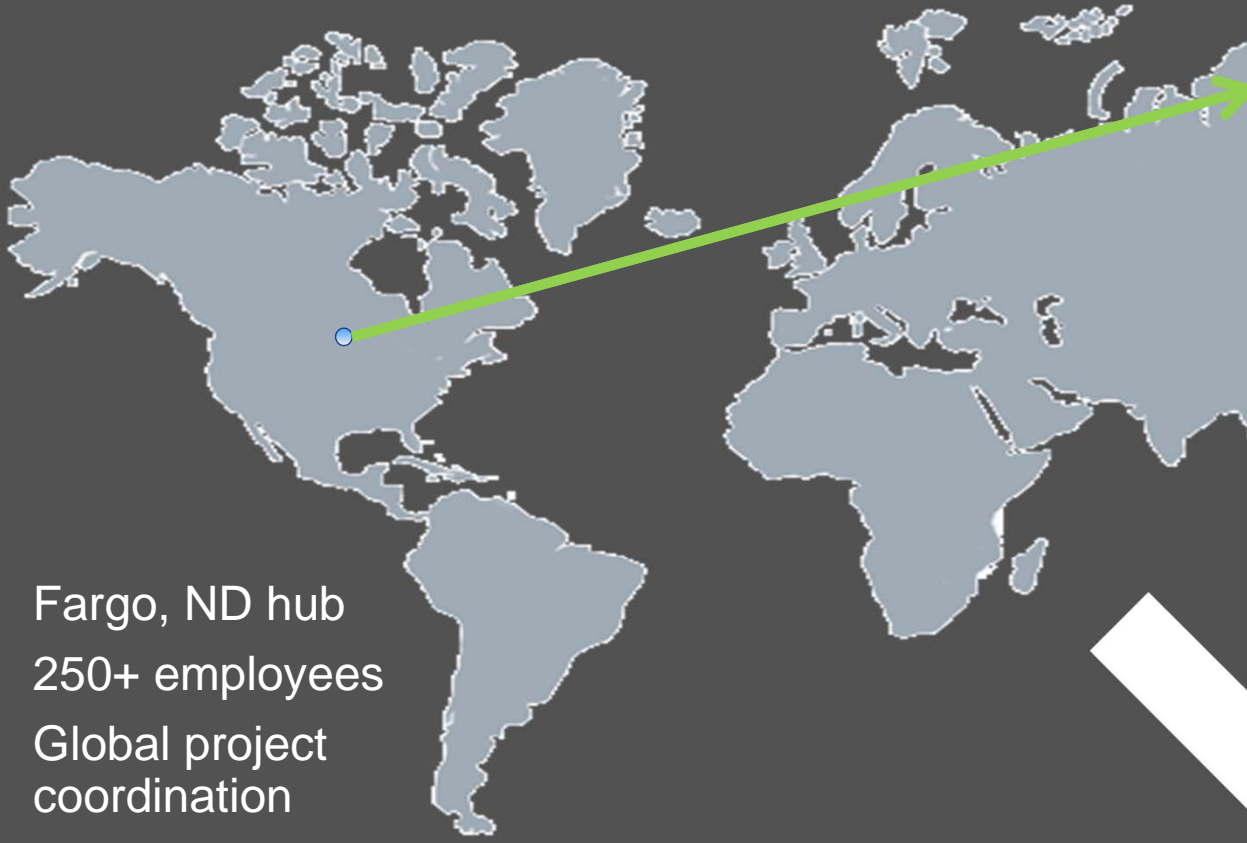
End Users/  
Community

Smart Data

Map —●



# Production Teams



- Fargo, ND hub
- 250+ employees
- Global project coordination

more

# Probe Data



here

# Map Building, Map Maintaining

Content —●



Methods —●

Field Data  
Collection

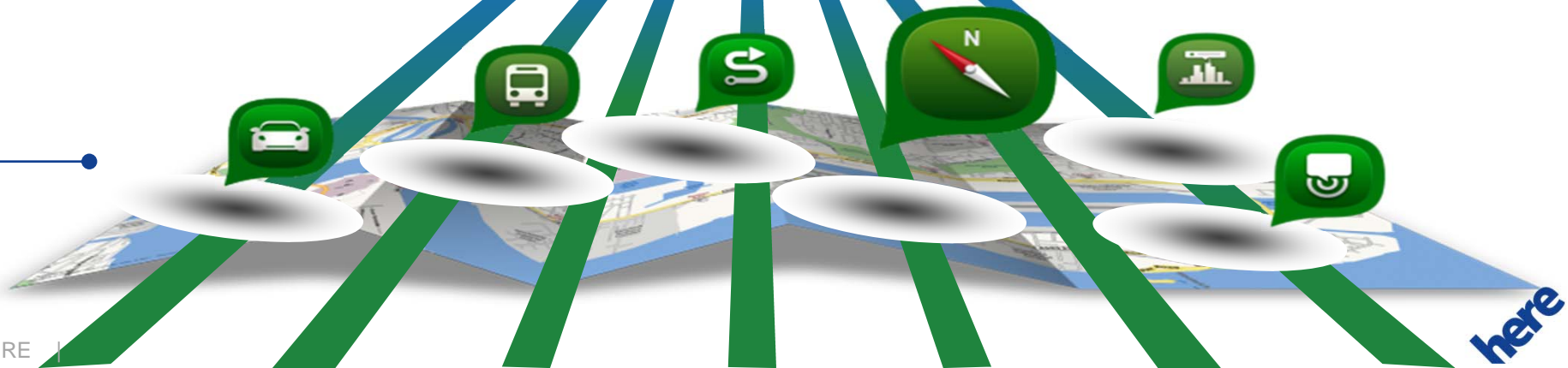
Production  
Teams

Local Source  
Data

End Users/  
Community

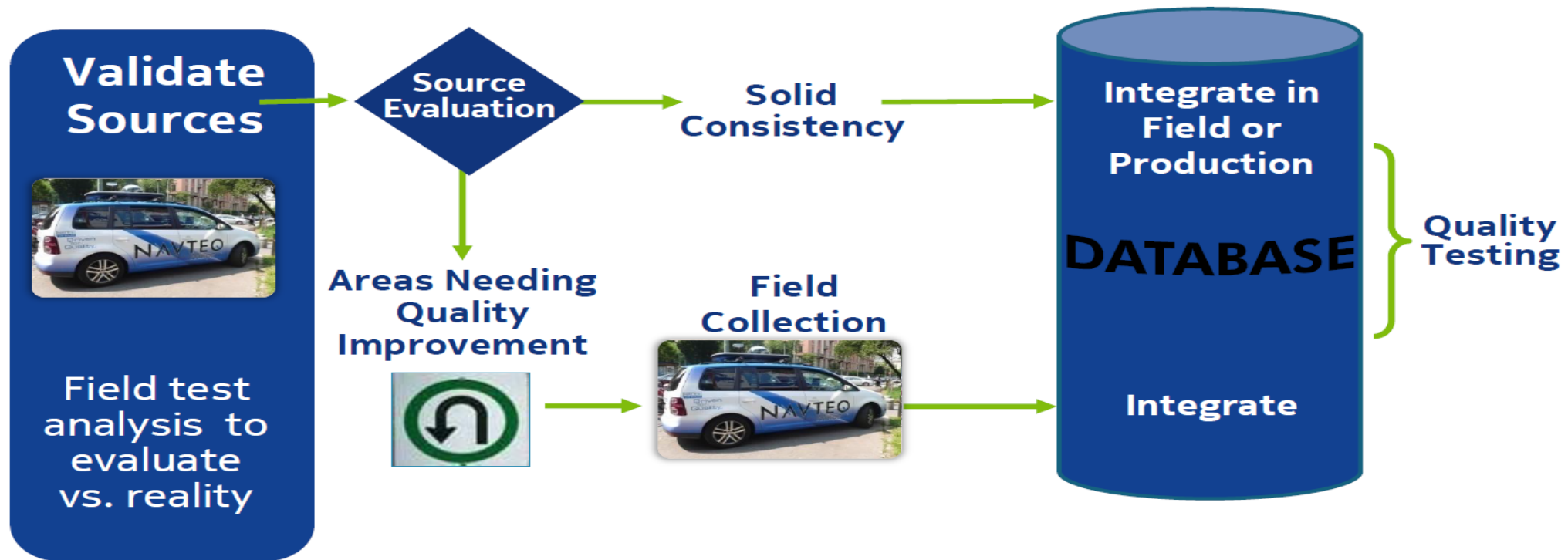
Smart Data

Map —●



# The Role of Local Sources in Our Map Build Process

Source qualification adheres to our global specification  
Integrating sources in our global operating model involves a multi-step process



# Benefits of Providing Data

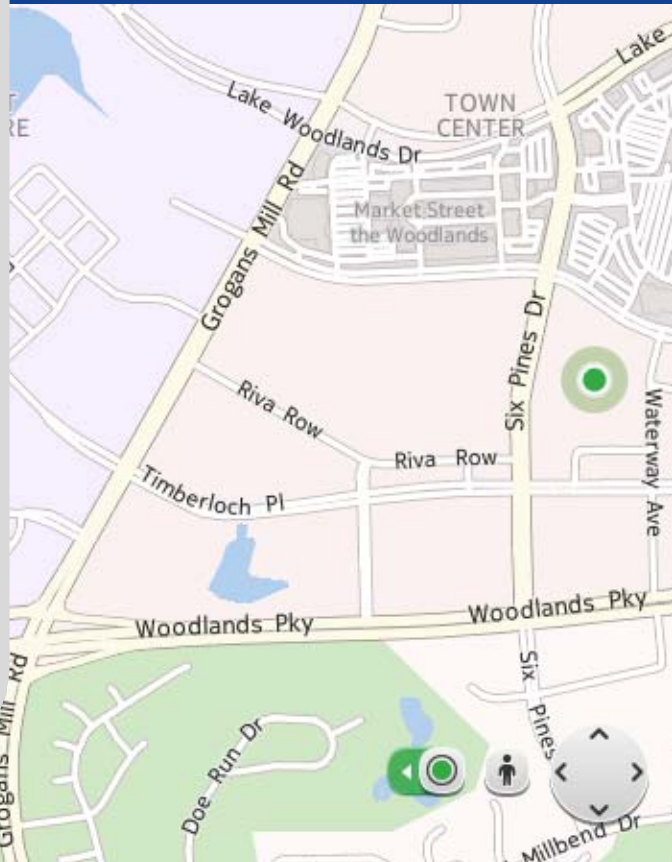
- Accurate local maps online, in vehicles and on mobile devices
- Rapid emergency response
- Successful deliveries
- Economic development boost
  - More accurate location of local and regional businesses
  - Residents are able to route quickly, safely around your community
- Lessens cost to the public for duplicate data collection through coordinating between gov't entities



# Data Submission

- Road/Street Centerlines
- Address Points
- Parcels
- Trails
- Cartographic
  - City/Admin boundaries
  - Parks
  - Zip code boundaries
  - Hydro

- Truck/Transport
- Pedestrian
- Public Transit
- Landmarks/POIs
- Building Footprints
- On-street Parking
- Venue Maps
  - Stadiums
  - Universities
  - Shopping Centers





## Get your data displayed on HERE Maps

- Share GIS Map Data, Public Transit, Venue (indoor) maps, Points of Interest and other types of Location content.
- Our platform is an efficient channel to deliver your location information to your customers.
- Your data will be exposed on a map that is used over 100 million times a day.
- Participants in the data sharing program must be owners of intellectual property rights and authorized to release the organisation's data.

# How to Provide Your Data

- HERE Maps Supplier Portal
  - <https://content.ext.here.com/>
- Email
  - [local@nokia.com](mailto:local@nokia.com)

Submit data

Via this form you can submit your data to us. Please verify and, if needed, correct the contact details first.  
 Then you can either attach the files or provide us with FTP or web-link and, if required, login name and the password.  
 If you have more than one file please archive it using ZIP or similar programs.  
 Also, if available, please attach a file with description/metadata of your dataset.

Account homepage » Submit new data

**Contact information**

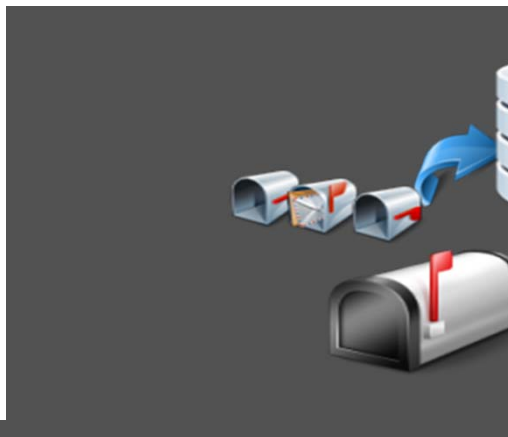
Your name \*  Last name \*   
 First name   
 Company - Organisation \*   
 Address   
 Zip code \*   
 Region   
 Country \*

**Address information**

Country \*  United States   
 State  New York   
 City  New York   
 Postal code  10001   
 Phone number \*   
 E-mail \*

**Data submission**

Data type \*   
 Delivery status \*   
 Update frequency \*   
 Coverage area (e.g. cities, streets, country)   
 Attach a file with the data  Browse...  
 Attach a file with data description  Browse...  
 Link to FTP or HTTP Web server   
 Login username  Password



# Map Building, Map Maintaining

Content —●



Methods —●

Field Data  
Collection

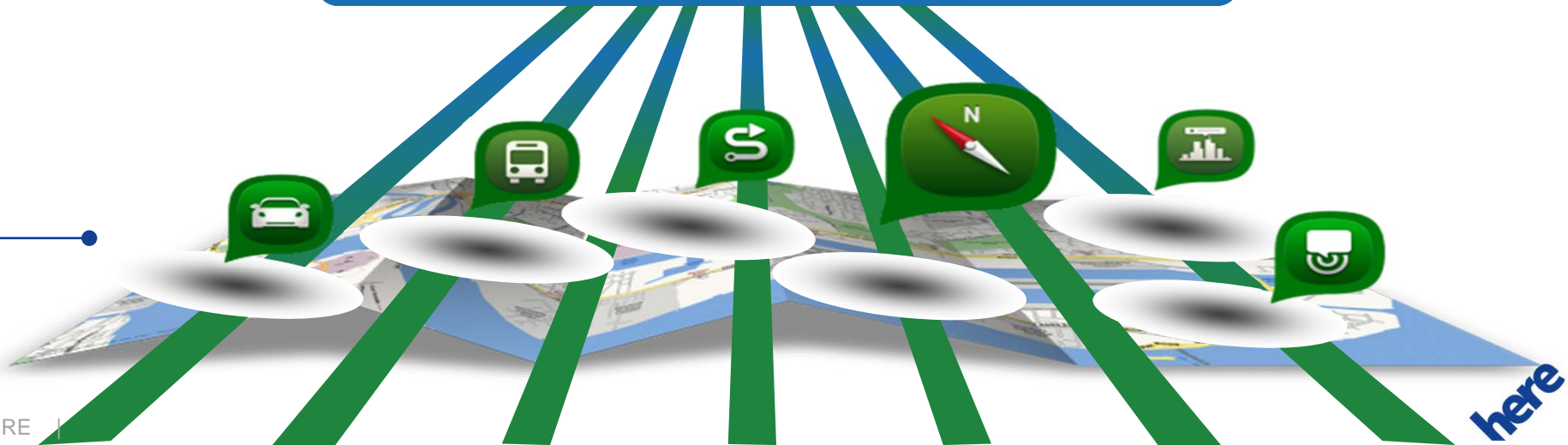
Production  
Teams

Local Source  
Data

End Users/  
Community

Smart Data

Map —●

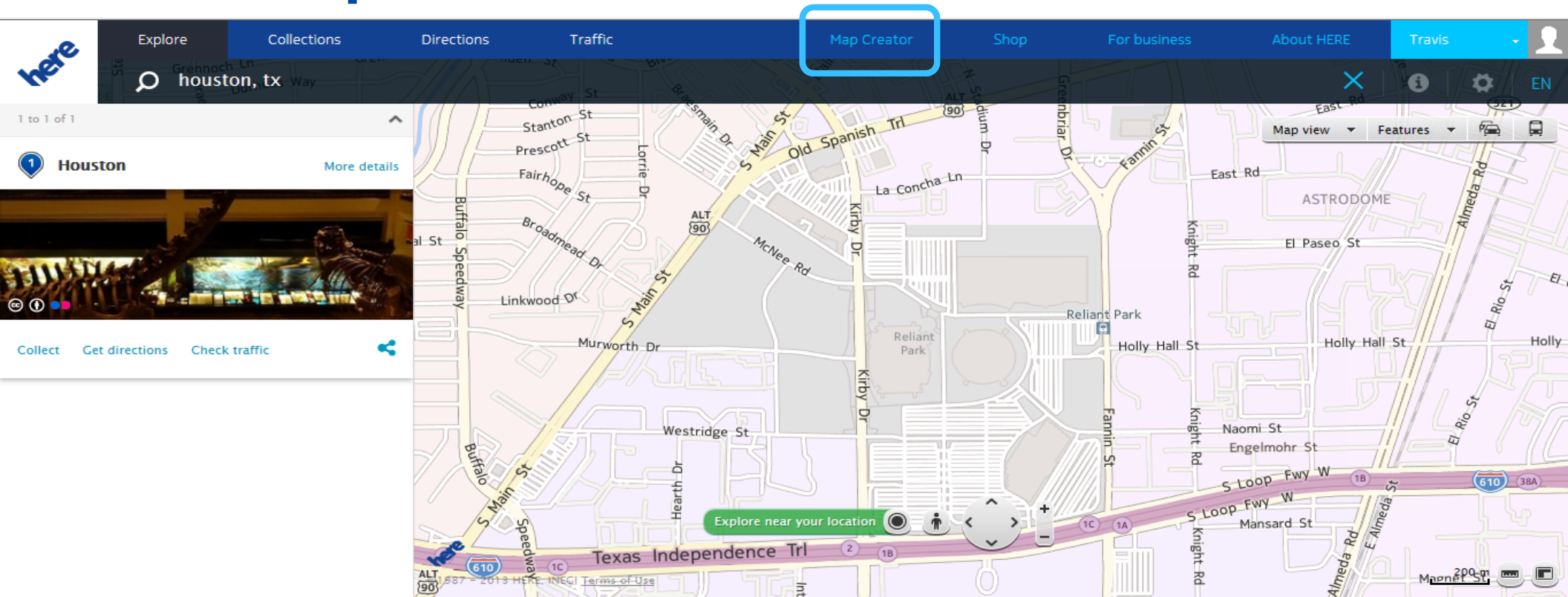


# Community Feedback

- We have been collecting community feedback since 1997
  - MapReporter
- Allows customers and end-users to provide feedback on our maps and solve any related discrepancies
- Valuable part of our map maintenance and quality improvement activities



# About Map Creator



Community map editing tool that allows expert communities to build out new, update or enrich existing areas of coverage, and almost instantly make use of that coverage on a personalized community map layer.

# Map Creator Editing

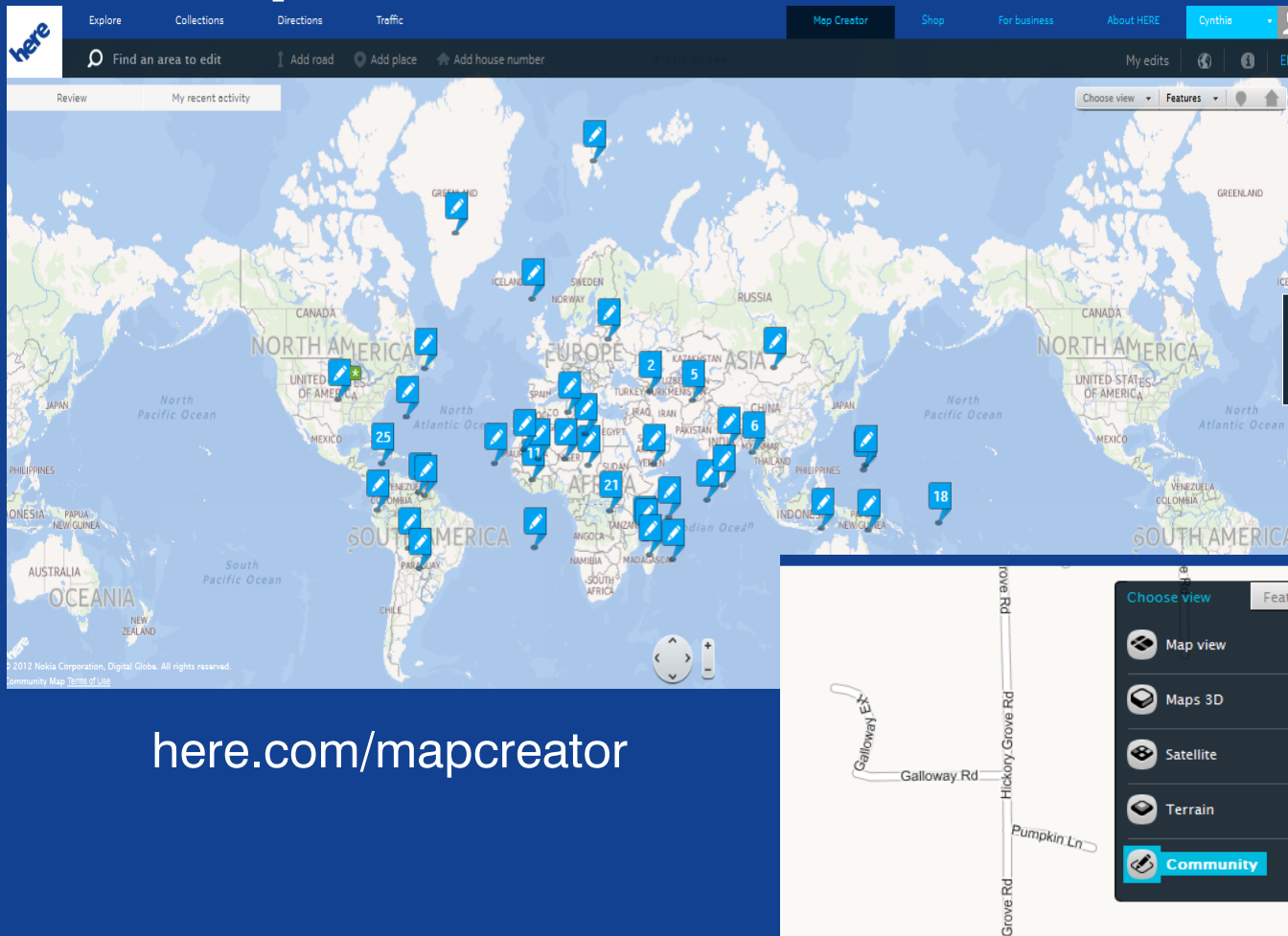


Road Attributes



Places & Point  
Addressing

# Map Creator Benefits



[here.com/mapcreator](https://here.com/mapcreator)

- Web-based
- Intuitive
- Instant publishing of edits in our Community Layer
- Daily refresh from live database
- Authoritative rights
- Community voting
- White labeling

# In Summary.....

here



- Map Creator gives you the power to make updates to our map
- Recognize providing your local data as an opportunity
- Accurate maps are critical, make for better decision-making and overall experience
- Benefits you and your local community
- **A WIN-WIN for all!**

# Thank you!

## Questions?



## Maps for Life

Travis Franz, GISP  
[travis.franz@here.com](mailto:travis.franz@here.com)

Jason West  
HERE-Houston Field Office  
[jason.west@here.com](mailto:jason.west@here.com)

Ross Wachendorf  
HERE-Dallas Field Office  
[ross.wachendorf@here.com](mailto:ross.wachendorf@here.com)

[www.here.com](http://www.here.com)