

24th Annual Conference

SCAUG



MARCH 10 - 14, 2014

THE WOODLANDS

Texas



The Woodlands Waterway Marriott

Upper Level
Meeting Space Layout



TABLE OF CONTENTS

Meeting Space Layout	Inside Cover
SCAUG Officers	2
Presidential Address	3
Greetings from TUG the SCAUG Mascot	4
Keynote Speaker	5
Training Classes & Workshops	7
General Agenda	8
Save the Date	8
State & Subchapters	10
Esri Technical Session Schedule	11
Esri Technical Session Abstracts	12
Award & Scholarship Winners	15
Contributor Recognitions	16
Esri Lightening Talks	17
Vendor Sponsorship Levels	18
Map Gallery Abstracts	19
User Presentation Session Schedule	24
User Presentation Session Abstracts	26
Vendor Biographies	37
GISP Checklist	46
Vendor Hall Layout	48



SCAUG OFFICERS

President: Charles Brady III, GISP

City of Ardmore, Oklahoma

Vice President: Shellie Willoughby, GISP

Oklahoma Office of Geographic Information, Oklahoma City,
Oklahoma

Treasurer: James Allen

Carter County, Oklahoma

Secretary: Anne Mackey, GISP

Tarrant County Transportation, Fort Worth, Texas

Past President: Joe Chapa, GISP

Principal Meridian Consulting, San Antonio, Texas

Conference Coordinator: Lydia Saucedo, GISP

CPS Energy, San Antonio, Texas

Conference Coordinator Elect: Betsi Chatham, GISP

City of Fort Worth, Texas

North Texas Representative: Samantha Gorham

NAVFAC SE GRC | GISi, Fort Worth, Texas

South Texas Representative: Mia Migliaccio

Access Midstream, San Antonio, Texas

Louisiana Representative: Shane Diaz

MSD GIS Services, Apple Springs, Texas

Mississippi Representative: Lauralee Gann

Everything is Somewhere, LLC., Sardis, Mississippi

Oklahoma Representative: Darryl Williams

U.S. Geological Survey, Oklahoma City, Oklahoma

Esri Representative: Karen Lizcano

Esri - San Antonio, Texas



PRESIDENTIAL ADDRESS

The 2014 Regional SCAUG Board would like to welcome you to the 24th Annual Regional SCAUG Conference in The Woodlands, Texas. Whether you follow all the SCAUG State Chapter, Sub Chapter, & local user group meetings in the region or only attend the Annual Regional SCAUG Conference we are pleased to see that you took time out of your busy schedule to spend it with us. We have attempted to provide you the best professional enrichment opportunity possible this week. We sincerely hope to have accomplished this and rely on you to take advantage of the opportunity as well as critique us on our efforts.

Whether you are a GIS professional or a casual end user of GIS products, GIS touches your life on a daily basis. SCAUG has witnessed and fostered several outreach opportunities since last year's conference in Addison, Texas. Increased scholarship opportunities, more local training, the emergence of more Sub Chapters, and the integration of GIS into various related fields are just a few new arenas SCAUG has venturing into during the past year. Mississippi held a Geospatially specific conference on the Gulf Coast. Louisiana saw an increase in SCAUG activity and outreach in several local user groups as well as SCAUG hosting the GIS component of the International Disaster Conference and Expo in New Orleans. Oklahoma held numerous user group meetings and multiple independent training classes along with a statewide conference. North Texas continues to be a proven strong GIS region with more growth & SCAUG awareness throughout the metroplex area as well as the East Texas User Group. South Texas has two growing active subchapters heavily involved in GIS Day events and outreach efforts with plans for more subchapters in the near future. The local GIS professional is and always will be the mainstay of SCAUG. It is the job of Regional SCAUG to provide that user, more specifically you, the best professional enrichment opportunities possible.

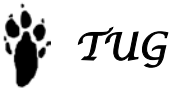
In the upcoming year Regional SCAUG is focusing on the local GIS user. How can SCAUG as an organization help you do your daily job better & more efficiently? How can we put you in contact with the local GIS community you may not know exists while retaining ties to a bigger GIS community that knows no geographic limitations? How can we expand that professional network for the individual that we all rely on so heavily? Our goal this year is to emphasize the local user group involvement, offer scholarship opportunities for the region, and provide cost effective custom GIS training. SCAUG is committed to providing a GIS professional network that respects the geography of where you operate while not being limited by that geography.

Thank You,
Charles Brady III, GISP

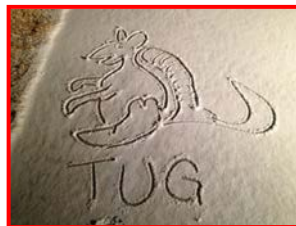


GREETINGS FROM TUG THE MASCOT

Welcome everyone to The Woodlands. For those of you who don't know me let me introduce myself. I am TUG the Arcadillo. I am the official webmaster, mascot and public information officer of SCAUG. I have been here since day one so a few of you will remember me. After a few years of being on sabbatical I am back in full force. I have spent the last year traveling throughout the SCAUG region visiting old friends and more importantly making new friends. My travels have taken me from to my reemergence at the conference in Addison to the sandy beaches of San Diego while attending the Esri UC. Both conferences gave me a chance to catch up on my GIS skills but more importantly reminded me what makes SCAUG such an amazing organization, the people. Once I returned from San Diego I began making my way throughout our region attending local GIS Day events, subchapter meetings and local trainings. I made my way north through the snow of Oklahoma all the way to the beach of Corpus Christi talking to people about GIS and our great organization. I encourage you to follow my GIS adventures on my Facebook page "Tug the Arcadillo". SCAUG also has a Facebook group where you can keep up to date on the latest news and events. My goal over the coming year is to continue to spread the word about who we are and what we do. I would also like to highlight the people and the great work they are doing on our Facebook page. Our organization is only as good as the people who participate and in my opinion we have the greatest people in the region. Enjoy the conference and please keep in touch!

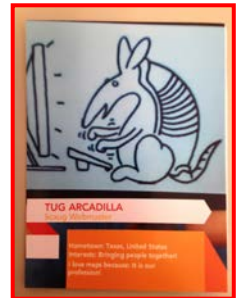


Pacific Ocean
San Diego, California



Snow Storm

Oklahoma City, Oklahoma



GIS Trading Card Everywhere, World



KEYNOTE SPEAKER

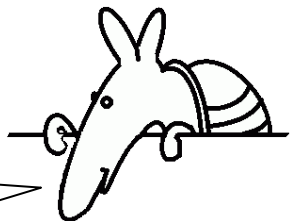


Jon Hansen served 27 years on the Oklahoma City Fire Department where he rose through the ranks to Assistant Chief. Chief Hansen served on the Incident Management team during the 1995 Murrah Building Bombing. In addition to his Command Team responsibilities, he also served as the media point of contact. When the F5 - F6 tornado (with the highest wind speeds ever recorded) devastated much of central Oklahoma, Chief Hansen helped establish the Incident Management team to handle this which was once again, a major disaster.

Chief Hansen also responded to assist at the World Trade Center and to Hurricanes Charley, Ivan and Katrina. Because of his first-hand experience with large-scale natural and man-made incidents, Chief Hansen was President Bush's nominee for U.S. Fire Administrator, the highest position in the fire service, in 2000. He commuted to and from Washington, DC several months as a special consultant to the FEMA Director and testified before Congress, until family obligations caused him to return to Oklahoma.

Chief Hansen is currently the Executive Director of the Oklahoma Council on Firefighter Training and is a lead instructor for the Center for Safety and Emergency Preparedness, Oklahoma State University, Oklahoma City campus. He is a graduate of the National Fire Academy's Executive Fire Officer Program.

TUG says:
Come join us on
Wednesday, March 12th
for the Opening Breakfast!
Buffet opens at 7:30am





International Disaster Conference & Expo

THE forum for Emergency Management professionals to convene with global leadership from the public and private sectors, addressing disaster response and recovery!



One Event.
One Location.
Unlimited Opportunities.

February 10-12, 2015
New Orleans, Louisiana



International Disaster Conference & Expo

Uniting Public & Private Sector Professionals from around the world.

www.idcexpo.net

Visit us on Facebook / Follow us on Twitter: @idcexpo

TRAINING CLASSES & WORKSHOPS

Monday, March 10th		
TIME	EVENT	PLACE
7:30am to 8:30am	Registration	Marriott 3rd Floor
8:00am to 5:00pm	ArcGIS 4: Sharing Content on the Web	Cochran's Crossing
8:00am to 5:00pm	Migrating to ArcGIS 10.2 for Server	College Park
8:00am to 5:00pm	Python for ArcGIS	Grogans Mill
8:00am to 5:00pm	GIS Editing 101	Indian Springs

Tuesday, March 11th		
TIME	EVENT	PLACE
7:30am to 8:30am	Registration	Marriott 3rd Floor
8:00am to 5:00pm	ArcGIS 4: Sharing Content on the Web	Cochran's Crossing
8:00am to 5:00pm	Migrating to ArcGIS 10.2 for Server	College Park
8:00am to 12:00pm	GNSS	Grogans Mill
8:00am to 12:00pm	Coordinate Systems “Holy Shift, What Coordinate System do I Use?”	Indian Springs
1:00pm to 5:00pm	ArcGIS Mobile with Trimble Positions for High Accuracy Data Collection	Grogans Mill
6:00pm to 7:00pm	Registration	Marriott 3rd Floor
6:00pm to 8:00pm	Meet & Greet	Marriott 3rd Floor Montgomery Prefunction

Friday, March 14th		
TIME	EVENT	PLACE
8:30am to 12:00pm	ArcGIS Online - Build It & Make Sure They Come!	Cochran's Crossing
8:30am to 12:00pm	Preparing Your Data for Community Maps	College Park
8:30am to 12:00pm	Ground Penetration Radar	Grogans Mill



GENERAL AGENDA

Wednesday, March 12th		
TIME	EVENT	PLACE
7:30am to 9:00am	Breakfast Buffet	Waterway Ballroom
7:30am to 5:00pm	Registration	Marriott 3rd Floor
9:00am to 11:30am	SCAUG Business & Keynote Speaker	Waterway Ballroom
11:30am to 12:30pm	New & Old Officers Lunch	Shenandoah
11:30am to 1:00pm	Lunch on Your Own	
1:30pm to 2:30pm	ESRI Technical Session I	Grogans Mill Indian Springs The Woodlands
2:45pm to 3:45 pm	ESRI Technical Session II	Grogans Mill Indian Springs The Woodlands
4:00pm to 5:00pm	ESRI Technical Session III	Grogans Mill Indian Springs The Woodlands
4:00pm to 6:00pm	Vendor Set-Up	Waterway Ballroom

SAVE THE DATE

Esri International User Conference
San Diego, California
July 14 -18, 2014



SCAUG Mixer - July 15, 2014



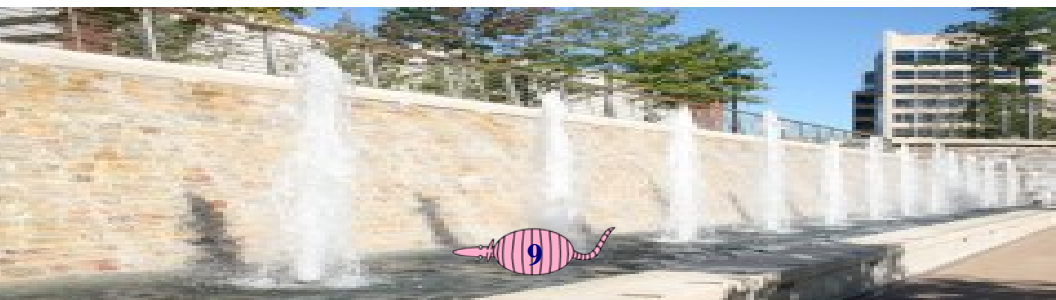
OKSCAUG Conference
Oklahoma City, Oklahoma
September 23, 2014

25th Anniversary SCAUG Conference
Addison, Texas
April 13 – 17, 2015



GENERAL AGENDA

Thursday, March 13th		
TIME	EVENT	PLACE
6:00am to 8:00am	Vendor Set-Up	Waterway Ballroom
8:00am to 9:15am	Continental Breakfast	Waterway Ballroom
7:30am to 12:00pm	Registration	Marriott 3rd Floor
8:00am to 6:00pm	Vendor Hall	Waterway Ballroom
8:00am to 3:00pm	Map Gallery	Waterway Ballroom
8:00am to 9:15am	Vendor Visit	Waterway Ballroom
8:00am to 9:00am	Special Session Track	Grogans Mill
9:15am to 10:15am	Session Track I	Grogans Mill Indian Springs The Woodlands
10:30am to 11:30am	Session Track II	Grogans Mill Indian Springs The Woodlands
11:30am to 1:00pm	Vendor Lunch	Waterway Ballroom
1:00pm to 2:00pm	Session Track III	Grogans Mill Indian Springs The Woodlands
2:00pm to 3:00pm	Vendor Visit	Waterway Ballroom
3:00pm to 4:00pm	Session Track IV	Grogans Mill Indian Springs The Woodlands
4:00pm to 6:00pm	Vendor Reception & Map Gallery Winner	Waterway Ballroom
7:00pm to ???	Thursday Night Social	Bakers St. Pub 25 Waterway Avenue



STATE & SUBCHAPTERS



Alamo Area GIS User Group – AAGIS



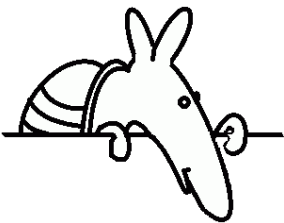
East Texas GIS & GPS User Group – ETUG



Oklahoma State Chapter – OKSCAUG



Rio Grande Valley Arc User Group – RGVAUG



TUG says:
Interested in starting or
joining a local user group?
Check out the SCAUG web
site to see how!



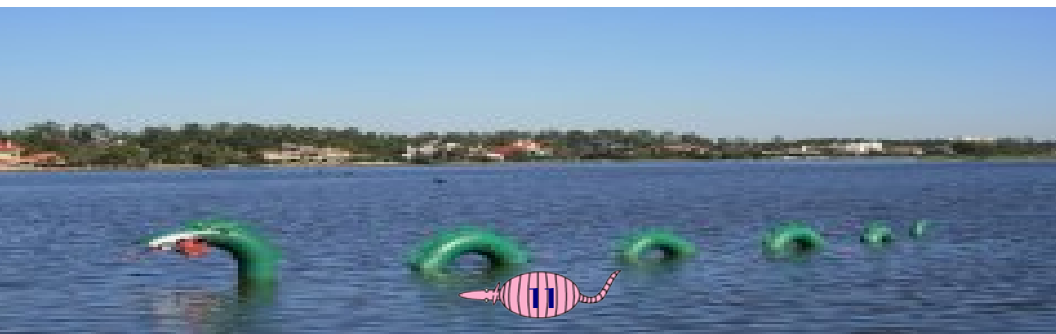
ESRI TECHNICAL SESSION SCHEDULE

Wednesday, March 12th

GROGANS MILL		
Session Track I 1:30pm - 2:30pm	Session Track II 2:45pm - 3:45pm	Session Track III 4:00pm - 5:00pm
Community Maps "Be Part of Esri's Living Atlas" Mark Stewart	Law Enforcement & GIS "Criminals in Cuffs" Mike King	Geo Trigger & Events Processor "Hey, Look I am Here!" Brig Bowles

INDIAN SPRINGS		
Session Track I 1:30pm - 2:30pm	Session Track II 2:45pm - 3:45pm	Session Track III 4:00pm - 5:00pm
Facilities Management "GIS...Modernizing the Management of Your Buildings and Campuses" Sheila Steffenson	Location Analytics "Adding Location to Your Local Government" Pam Kersh	Imagery "What To Do With Imagery?" Mike Beavers

THE WOODLANDS		
Session Track I 1:30pm - 2:30pm	Session Track II 2:45pm - 3:45pm	Session Track III 4:00pm - 5:00pm
Public Safety & Emergency Management "Preparation and Response from a Fire Management Perspective" Pam Kersh	Oil & Gas "Energy at Work" Mark Smithgall	Land Records "Are You Missing Out on Revenue? Find it with the ArcGIS for Land Records Solution!" Karen Lizcano



ESRI TECHNICAL SESSION ABSTRACTS

Wednesday, March 12th

Session Track I – 1:30pm to 2:30pm

Community Maps – “Be Part of Esri’s Living Atlas”

Mark Stewart

GROGANS MILL

ArcGIS includes a living atlas of the world with useful and authoritative maps on hundreds of topics. It combines reference and thematic maps with rich content relating to people, earth, and life. This presentation will describe the living atlas with a focus on how to participate by sharing your organization’s content with the world through Esri Community Maps. By joining Community maps, you become part of the global living atlas community, and your authoritative data will enrich a widely-available cloud-based platform comprised of ready-to-use maps, applications and topics that include demographics, imagery, oceans, streets, topography, the natural environment and urban systems.

Facilities Management – “GIS...Modernizing the Management of Your Buildings and Campuses”

Sheila Steffenson

INDIAN SPRINGS

Whether you manage a single building, an entire campus, or a global portfolio of buildings/campuses, GIS can help you to better plan, design, utilize, and manage your assets. Used throughout the facility lifecycle, GIS enables faster/more holistic decision support by tying together disparate facilities information from different systems (e.g.CAD, IWMS, CMMS, CAFM, and ERP) into a more complete picture. Our solution includes facility-specific templates and applications that enable you to easily stand up your facility/campus base map and begin using it to better manage your spaces. During this session we will hone in on the 3 aspects of Facilities and Real Property Management...that of Portfolio, Operations and Safety & Security to look at how GIS can enable Facilities workflows from site selection, to space management, to safety and security, to sustainability.

Public Safety & Emergency Management – “Preparation and Response from a Fire Management Perspective”

Pam Kersh

THE WOODLANDS

The ArcGIS Platform provides a wealth of solutions to analyze risk, develop pre-incident plans and improve response activities that protect human life, property and natural resources in your community. During this session, we

will look at how to use and deploy different templates to assist you in your emergency management response and preparation planning.

Session Track II – 2:45pm to 3:45pm

Law Enforcement & GIS – “Criminals in Cuffs”

Mike King

GROGANS MILL

This presentation highlights GIS techniques and methodologies that are bolstering law enforcement’s response to criminal events. Participants will see examples and learn how the data management, analysis, mobile solutions and harnessing of social media are helping solve crime and how organizational GIS practitioners and cops are coming together to make communities safer.

Location Analytics – “Adding Location to Your Local Government”

Pam Kersh

INDIAN SPRINGS

Do you have a Location Analytics Strategy to address the challenges you face in your local government? Location analytics allows you to increase healthy communities, provide quality education, develop sustainable environments and build thriving economies – just to name a few! ArcGIS provides the platform to enable and deliver location analytics to all departments that support local governments and in this session we will discover and learn about these exciting solutions.

Oil & Gas – "Energy at Work"

Mark Smithgall

THE WOODLANDS

Geospatial data and maps are becoming increasingly important to all business units within an energy company. From plotting your oilfield operations to viewing Tweets on a proposed pipeline route, filling out an inspection checklist to predicting where a hurricane may track, these business critical tasks all have a spatial component that needs to be mapped. Stop by for insight on how to use the ArcGIS Platform to accomplish these tasks within your organization.



Session Track III – 4:00pm to 5:00pm

Geo Trigger & Events Processor - “Hey, Look I am Here!”

Brig Bowles

GROGANS MILL

Do you want to send an alert when a user crosses some geographic area or when they are near something? The Geo Event Processor allows you to connect with virtually any type of streaming data and automatically alert users when specified conditions occur—all in real time! During this session we will show how to build a geo-trigger application using geo-fencing and the geo-event processor for ArcGIS Server.

Imagery – “What To Do with Imagery?”

Michael Beavers

INDIAN SPRINGS

Do you have years and years of imagery just sitting on servers, not being used? Until now, managing, processing, analyzing and distributing aerial and remote sensing imagery using conventional methods has been difficult and time consuming. During this session, we will show you some innovative solution that now allow users to store, quickly access and easily analyze imagery; manage catalogs of imagery from various sources and integrate imagery more efficiently into existing workflows. This session will show you how to maximize the value of your imagery by making it accessible to many different users and applications.

Land Records – “Are You Missing Out on Revenue? Find it with the ArcGIS for Land Records Solution!”

Karen Lizcano

THE WOODLANDS

During this session, we will show how to maintain your data, creating a first class land records inventory. Your parcel information will never be the same! We will also create a public mapping application for viewing your parcel information. Would you like to keep survey information in your GIS? Want to do a parcel value analysis? Want a mobile app for your citizens? Want to reduce appeals? Save time? Have more accurate GIS data? Come and learn how this can all be accomplished leveraging ArcGIS for Land Records!

AWARD & SCHOLARSHIP WINNERS



Founder's Award

Justin Cure, GISP, CGCIO

City of Longview



Thumbs Up Award

Jessica Reyna

Lower Rio Grande Valley
Development Council



SCAUG \$1000 Memorial Scholarship

Amber Cannon

Weather Decision Technologies

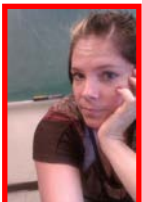
University of Oklahoma



SCAUG \$1500 Regional Scholarship

Pradeep Adhikari

University of Oklahoma



SCAUG \$1500 Regional Scholarship

Cassondra Walker

Oklahoma State University



CONTRIBUTORS RECOGNITION

THANK YOU to the following organizations for their generous donations & sponsorships



Aerial Services, Inc. & Esri
Coffee Break
Wednesday, March 13th

GISNuts.com

GISNuts

Continental Breakfast
Thursday, March 13th

McAllen Convention & Visitors Bureau
Map Gallery Awards



Lower Rio Grande Valley Development Council
Conference Guide



Fort Worth Office of Emergency Management
Tarrant County 9-1-1
Tarrant County Emergency Management
Conference Bag Gift Items

Western Data Systems
Presenter Gifts

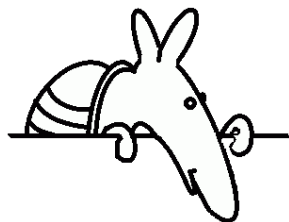


ESRI LIGHTENING TALKS
Thursday, March 13th
Vendor Hall ~ Esri Exhibit Booth

Time	Topic
8:30am – 8:45am	Maps for Office
9:00am – 9:15am	Small Government ELA
9:30am – 9:45am	ArcGIS for Local Government
10:00am – 10:15am	ArcGIS Templates
10:30am – 10:45am	Story Maps
11:00am – 11:15am	Land Records
11:30am – 11:45am	Mobile Data Collection
12:00pm – 12:30pm	Open Data
1:00pm – 1:15pm	Community Base Maps
1:30pm – 1:45pm	ArcGIS for Water Utilities
2:00pm – 2:15pm	ArcGIS Administration
2:30pm – 3:00pm	Location Analytics
3:00pm – 3:15pm	Imagery
3:30pm – 3:45pm	ArcGIS Market Place



esri®



TUG says:
Meet me in line at
11:30am for the Vendor
Lunch on Thursday,
March 13th



VENDOR SPONSORSHIP LEVELS

PLATINUM



GOLD



SILVER



MAP GALLERY ABSTRACTS

HPA Creation

Brent C. Cochran, SWCA Inc.

SWCA Inc., an environmental and cultural resources surveying company, surveys proposed pipelines for Oil and Gas companies to determine if there are any culturally significant sites to avoid. Because of issues involving cost and time, the area surveyed is reduced to those deemed potentially significant by professional archaeologists, a task facilitated by GIS analysis. Areas known as High Probability Areas (HPAs) are created along the survey corridor where it intersects streams and waterbodies, often the location of significant cultural locations. This poster intends to show the step-by-step process of how the HPAs are spatially created.

GSI Tornado Website for Disaster Recovery at Riverwind

The Chickasaw Nation Department of GeoSpatial Information

Last May, many Oklahomans were devastated by tornadoes; several of which were Chickasaw citizens and employees.

A Chickasaw Disaster Relief and Recovery command post was setup Riverwind Hotel in Norman, OK. Chickasaw Nation's Department of Geospatial Information created an ESRI ArcGIS web application used at the Chickasaw Command Center. The Chickasaw Nation Emergency Management System (EMS) web application is based on the ArcGIS API for Flex and allowed thousands of addresses to be geocoded. With the tornado path already projected, EMS efficiently located those Chickasaw citizens and employees affected by the tornadoes. The post-imagery allowed a citizen or employee to view their location and help workers understand the extent of their damage. The EMS application allowed Chickasaw Nation volunteers to start the clean-up process for those homes affected. The EMS played a key role in the retrieval of information pertaining to the Chickasaw citizen or employee.

GSI Goes Mobile, Building the LHP Mobile App

The Chickasaw Nation

Division of Construction & Support Services

Department of GeoSpatial Information

Tribal jurisdiction is a major issue for tribal police departments. The Department of GeoSpatial Information (GSI) has simplified jurisdictional and boundary issues by creating a custom Lighthorse Police web application. The web application not only provides officers with tribal boundaries and jurisdictions, they are also able to view

tribally owned/allotted lands, facilities with pictures and floor plans, area emergency management services, and high resolution imagery.

This poster provides a step-by-step look at the process GSI used to create a mobile application for the Chickasaw Nation Lighthouse Police. It demonstrates how GSI leverages ArcGIS for iOS to give officers the same capabilities of the custom web application in a real-time app for the iPhone/iPad. The mobile application provides officers with jurisdictional information when it is most needed, in the field. In addition, the mobile app gives officers the ability to collect incident information at the scene and have it saved to a private 'in-house' server to be used for future crime analysis.

Utilizing GIS to collect and manage billboards in Oklahoma

David J. Littlejohn, Natasha Moody, Bryan Salsieder, CEC // Infrastructure Solutions

This poster highlights the GIS tools and processes implemented by CEC to more efficiently and accurately collect and manage the state-wide dataset representing billboards. This effort introduces GPS domain standardization, automated map production, geodatabase management, and web application development into sign inventory in Oklahoma.

Optimized Tapestry HotSpot Grouping Analysis

Garri Grossi, Interstate Batteries

This map is a focused study of where the typical Recreational Vehicle owner lives in relation to existing repair and service locations. Analysis components include defined ESRI Tapestry Segmentation Profiles, the Spatial Autocorrelation tool to confirm the significance level (p-value) and z-score, and the Optimized Hot Spot Analysis tool so determine significant demographic clustering. The result defines locations where a seller of RV-related services and accessories could effectively focus their marketing.

San Jacinto River Authority Divisions and Region

Karen Thomas, San Jacinto River Authority

An information map of the San Jacinto River Authority's sphere of responsibilities and regional control. This will include locations and regions for our 4 divisions, Lake Conroe, The Highlands, The Woodlands Township as well as our GRP, Ground Water Program division. Some Highlights of the map will include our overall Watershed, our sub watershed for Lake Conroe, the 90 year old canal system in the Highlands and the large water volume user/participants that are part of our GRP who have joined together to reduce their ground water usage by a 1/3 of that in the year 2009.

Overhead to Underground: A 3-D GIS Utility Relocation Representation

Larry Jahn, Cobb, Fendley & Associates

Overhead utilities are relocated underground for beautification purposes, economic development, and damage prevention. Relocating utilities underground creates an attractive streetscape, increases green space, and appeals to new development. Other important benefits of the relocation include securing and protecting the utilities from everyday environmental factors, ensuring service continuity.

ArcMap and ArcScene were used to model the visualization and illustrate the transition of utilities from overhead to underground.

Hobby Airport Runway Obstruction Analysis

Shibbir Ahmed, Houston Airport System

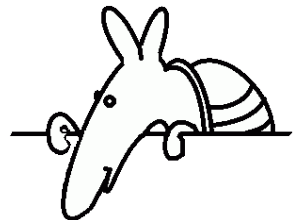
It is important to analyze digital elevation data sets relative to the FAA Federal Aviation Regulations Part-77 to enhance safety at the airport. The obstruction analysis will identify trees and other objects that penetrate approach surfaces to the runway.

Progress in Motion: Keeping Up with the City of Frisco's Water and Wastewater Development

Sherrie Hubble, Freese and Nichols, Inc.

The City of Frisco, Texas has experienced a tremendous amount of growth over the last twenty years, having been designated the fastest-growing city in the nation in 2009 and the fastest-growing on average from 2000 through 2009. Residential and commercial development has taken place at an astounding rate, with a total of 3,000 residential development permits issued and 30 permits issued for new commercial projects in the year 2012 alone. An important part of the development review process includes determining the effect of this new growth on existing infrastructure and what kind of additional water demand and wastewater flows will be triggered as a result of incoming development. The poster presentation highlights some of the most recent residential and commercial projects in the City of Frisco, and, specifically, illustrates the process of how Freese and Nichols, Inc., an engineering firm, evaluates the water and wastewater systems to make capital improvement recommendations for new development.

TUG says:
Don't forget to vote for
your favorite maps in the
Map Gallery on Thursday,
March 12th before 3pm!



Justices of The Peace – Caseload Inputs & Precinct Planning (Where does all the work come from?)

Bret Fenster, Collin County

This is a portrayal of different kernel densities which show potential inputs to the JP caseloads in Collin County. Our County Administrator requested this map to help plan JP redistricting with a goal of even workloads for each precinct. The major inputs depicted are retail, multi-family housing, traffic counts and population. It's a challenge to redefine existing boundaries without adding new offices!

Potential Locations of *Astragalus mohavensis* in Clark and Nye Counties, Nevada

Matt Kitchen, Adams Environmental, Inc.

Astragalus mohavensis is a rare plant located in Clark and Nye Counties, Nevada. Surveys are currently being conducted to locate its presence. Using existing data and information regarding previous discoveries of *Astragalus mohavensis*, a model has been developed to attempt to predict its most likely locations. This map depicts both the potential locations of this species in Clark and Nye Counties as well as the model used to predict these locations.



Geocortex® | by Latitude Geographics®

www.geocortex.com

Copyright © 2013 Latitude Geographics Group Ltd. All Rights Reserved. Geocortex and Latitude Geographics are registered trademarks of Latitude Geographics Group Ltd. in the United States and Canada, and are trademarks in other jurisdictions around the world. Esri and ArcGIS trademarks are provided under license from Esri Inc. Other companies and products mentioned are trademarks or registered trademarks of their respective owners.





**Howdy
Partner!**



A Texas-sized "Howdy" from Cityworks SAM:
Announcing our new Dallas regional office.

Contact Brent Wilson to learn how we're helping
cities from the size of Houston to Highland Village,
TX wrangle their assets.

Brent Wilson
Executive Director of Sales
1510 North Hampton Road
Suite 310, DeSoto, Texas 75115

Cell: 214-507-0579
Office: 801-617-8385
bwilson@cityworks.com

Cityworks®

USER PRESENTATION SESSION SCHEDULE

GROGANS MILL
Special Session Track 8:00am - 9:00am
Cross Cultural Volunteering & Humanitarian Relief E.M. Awasum

GROGANS MILL	
Session Track I 9:15am - 10:15am	Session Track II 10:30am - 11:30am
Wastewater Risk Assessment Using Custom Python Toolbox in ArcGIS 10.0 Matt Stahl, John D'Antoni, & M. Umer Khan ArcGIS JavaScript Plus Django Equals Dynamic Web App Leslie H. Morgan, Ph.D.	Raising the Value of a Local Government GIS Using a GIS-Centric Work Order and Permitting System Justin Cure, GISP, CGCIO

INDIAN SPRINGS	
Session Track I 9:15am - 10:15am	Session Track II 10:30am - 11:30am
Delivering What Users Need Scott Stafford-Veale Web Publishing for the small GIS Shop Lessons Learned Dustin Holt	Low-Cost GIS for Today's GIS Professionals Adam Hill

THE WOODLANDS	
Session Track I 9:15am - 10:15am	Session Track II 10:30am - 11:30am
Parks & Rec - More Than Just Fun & Games: GIS, Cityworks and Freeance Combine for a Parks & Rec Mobile Solution Sunny Lindsey, GISP & Jeremy White Using GIS and 3D Visualization as a Decision-Making Tool for Local Government Joseph C Molis	CAD to GIS: A complete conversion in the real world David J. Littlejohn EPSG, WKID, WKT: A simple standard for spatial reference system identification Denver Pierce

USER PRESENTATION SESSION SCHEDULE

GROGANS MILL	
Session Track III 1:00pm - 2:00pm	Session Track IV 3:00pm - 4:00pm
Evaluating the Use of UAV's for Local Government Kevin Earl New Cool Toy for GIS Mapping Ashok Wadwani	Aerial Patrol Software: Updating and Upgrading Jessica Rice Operations Dashboard – A Pilot Project for Corporate Security Chloe Howlett, Jennifer McCanne, & Katy Rich

INDIAN SPRINGS	
Session Track III 1:00pm - 2:00pm	Session Track IV 3:00pm - 4:00pm
OKMAPS E-911 Collaborative Project Shellie Willoughby, GISP & Charles Brady III, GISP	Outrageously Dependable GIS Garri Grossi Increase Effectiveness Through LGIM For Water Utilities Kevin Stewart

THE WOODLANDS	
Session Track III 1:00pm - 2:00pm	Session Track IV 3:00pm - 4:00pm
LiDAR; Huh That Was Easy J. Scott Sires	Expanding the Reach and Power of Your Data with HERE Maps Travis Franz First Responders and GIS Professionals: Sharing First-hand Experiences and Solutions Capt. Scott L. Trapolino, GISP

USER PRESENTATION SESSION ABSTRACTS

Thursday, March 12th

Special Session Track – 8:00am to 9:00am

Cross Cultural Volunteering & Humanitarian Relief

E.M. Awasum, AIDHREX

GROGANS MILL

The principal objective of my presentation is to demonstrate the pros & Cons of living and working effectively in a cross-cultural and trans-continental setting with people of different culture and language. Persons in these cultures who volunteer for humanitarian work may not be motivated by Race, Ethnicity, Religion or language but the adversity and challenges would have you wondering if a you yourself would succeed in functioning in such conditions. how flexible are you when you end up in another culture or working in an ethnic group different than yours. The probability that personnel will leave humanitarian work is lower if they perceive working conditions as good. My experience as a 9/11 volunteer with the American Redcross, then working for the Cameroon Redcross in West Africa before creating my own humanitarian relief organization known as AIDHREX in 2013 would help edify you on related issues on cross cultural volunteering and humanitarian relief.

Session Track I – 9:15am to 10:15am

Wastewater Risk Assessment Using Custom Python Toolbox in ArcGIS 10.0

Matt Stahl, John D'Antoni, & M. Umer Khan, Alan Plummer Associates, Inc.

GROGANS MILL

A risk assessment was performed for all wastewater infrastructure assets within the San Jacinto River Authority, The Woodlands wastewater collection and treatment system. A GIS-enabled data analysis and management methodology was developed and implemented using Python to assess risk in the wastewater system's gravity main, force main, lift station, and treatment plant assets. The requirements for the analysis were to incorporate the existing GIS and custom risk matrices developed for the client. The custom GIS toolbox was developed and coded in Python scripts to integrate the Arcpy geoprocessing and Data Driven Pages functionality with the Python modules Numpy and Matplotlib. This custom toolbox extends ArcGIS and provides a powerful combination of data analysis, charting, and data-driven mapping. Upcoming risk assessment projects will be able to efficiently and strategically integrate this toolbox with client-specific risk matrices and water infrastructure data.

ArcGIS JavaScript Plus Django Equals Dynamic Web App

Leslie H. Morgan, Ph.D., GIS Nuts

GROGANS MILL

In geospatial blogs and on Twitter, 2014 has been hailed as the year JavaScript takes over the GIS world. JavaScript allows for rich user interfaces executed in the client's browser, but adding a web framework such as Django enables the development of truly dynamic web applications.

Django is a Python-based open source web application framework. Esri's JavaScript applications can be deployed through Django, giving access to the Python language for generating web pages, Django's rich templating system that utilizes the concept of inheritance, and built-in security modules. This presentation will show how Django was used to implement user-based authentication and authorization for a web application employing the ArcGIS API for JavaScript. It will also show how Django facilitated the implementation of web application tasks such as exporting attribute tables to downloadable files and sending automatically generated emails to users.

Delivering What Users Need

Scott Stafford-Veale, Latitude Geographics

INDIAN SPRINGS

Creators of web mapping applications often struggle when deciding whether to offer comprehensive applications that risk being overly complex or simple applications that can risk being too limited.

Added to these challenges are the choices of delivery technology – Cloud based, Mobile, Disconnected, ArcGIS Online, HTML5 etc.

In this session, we'll explore the pros and cons of the array of options available to GIS/IT administrators and discuss best practices for delivering the mix and style of applications that are most appropriate for your end-users.

We'll use examples from real-world implementations to showcase success stories and lessons learned, while sharing core principles and specific approaches that are independent of our technology.

Web Publishing for the small GIS Shop. Lessons Learned.

Dustin Holt, Choctaw Nation of Oklahoma

INDIAN SPRINGS

This presentation will cover a methodological approach to choosing a web publishing platform for a small (1-5 people) independent GIS shop. Offices where all work is done in-house, where you collect and create their own data and want to publish it out as web services.

The presentation will not be a "how-to class," nor an endorsement of any one type of system over another. Instead, it is a discussion of the different types, methods, costs, resources, goals and how they impact your decision-making process.

**Parks & Rec - More Than Just Fun & Games: GIS, Cityworks and Freeance
Combine for a Parks & Rec Mobile Solution**

Sunny Lindsey, GISP, City of Highland Village

Jeremy White, Cityworks

THE WOODLANDS

“I am way too busy to be bothered with a new system to keep up with all the work I do in a day. This is another way for management to track my every move. Nothing you give me will make my job any easier, in fact you are here to make it worse. Can’t this wait until I retire in a few years?” This was some of the responses during the initial meeting between Parks & GIS. This was definitely going to be FUN!

The GIS division was tasked with providing a simple mobile solution for work orders, inspections, and asset management for the City of Highland Village’s Parks & Rec department. In less than 6 months, the crews went from making tick marks on paper to entering meaningful field data; accessible from any web connection.



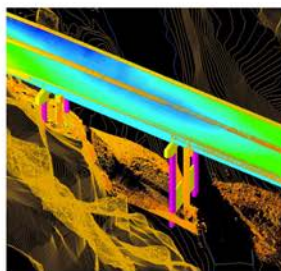
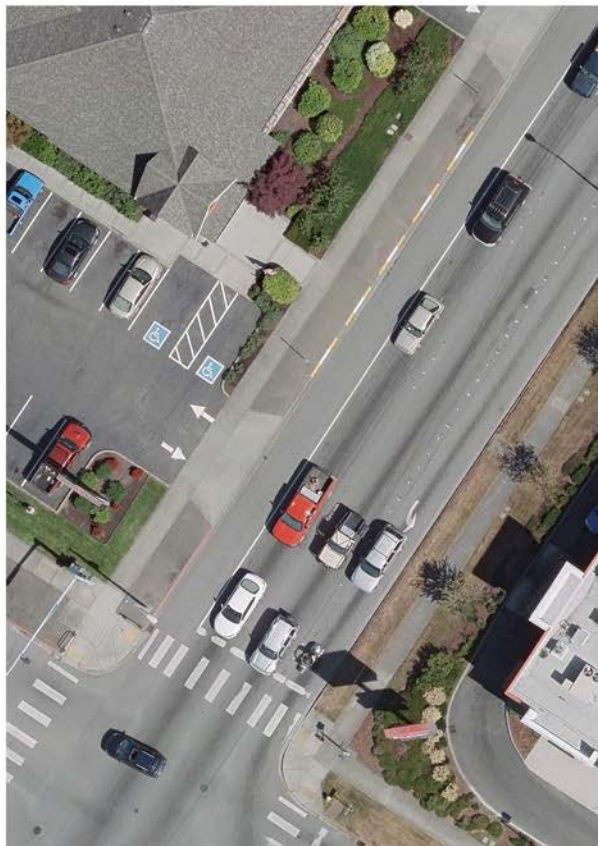
HOW IT WORKS

CycloMedia's vehicles record millions of city street images, detailing buildings and landscape features, which provide an objective and reliable representation of reality.

KEY BENEFITS

- Accurate feature measurements for better asset management and maintenance
- Reduced field visits, resulting in lower costs and improved staff safety
- Convenient spot-checking prior to sending workers into the field
- Continuously updated data as part of the license
- Easily integrates with Esri® ArcGIS®

1.800.790.3652 • www.cyclomedia.com/requestademo



ACCESSGEOGRAPHIC

IMAGERY - MAPPING - LIDAR - GIS

.....

ACCESS GEOGRAPHIC, LLC TAKES PRIDE IN SERVING COMMUNITIES AND INDUSTRY ACROSS NORTH AMERICA. WHILE EVERY PROJECT IS DIFFERENT, OUR COMMITMENT TO FINDING THE MOST **DIRECT** AND **COST-EFFECTIVE** GEOSPATIAL SOLUTION STAYS THE SAME. WE HONESTLY ENJOY WHAT WE DO, AND YOU'LL SEE IT IN OUR **RESULTS**.

.....

WWW.ACCESSGEOGRAPHIC.COM

(480) 709-2710



GEOGRAPHIC
INFORMATION
SERVICES, INC



ArcGIS for Local Government

Jumpstart packages and applications

Whether you want to get a jumpstart with ArcGIS for Local Government, are in the market for applications, or are looking to extend existing applications, we can help.

Jumpstart Packages

Implement
Local Government
Information Model

Setup
Local Government Maps
and Apps Gallery

Deploy
3+ applications of your
choice to the gallery

Share
Knowledge transfer so
it's repeatable by you

GISi Applications

General Viewer
For internal staff as well
as general public

Economic Development
Including demographics
reporting (subscription)

COP
Get the big picture when
it matters most with a
Common Operating
Picture

Fire Mobile
Locate assets when every
second counts

Extend Existing Apps

Start
With existing
applications from Esri's
gallery

Enhance
Current functionality and
tools

Customize
The applications with
new tools

Redeploy
The applications to the
marketplace

If you're not sure where you should start, try a GIS HealthCheck to get started. It can provide you with a roadmap to your GIS success by identifying short, mid, and long-term prescriptions that add value to your stakeholders. Learn more about the GIS HealthCheck at gisinc.com/gishealthcheck

For More Information:

Email us: sales@gisinc.com

Call us: (205) 941-0442

Or visit our website: www.gisinc.com

Using GIS and 3D Visualization as a Decision-Making Tool for Local Government

Joseph C Molis, GISP, City of Harker Heights

THE WOODLANDS

The City of Harker Heights recently passed a zoning overlay called Development Overlay District 1 – The Knight’s Way Corridor. This overlay provides additional tools to guide positive commercial development and increases aesthetic standards for higher quality building and site design. Based upon stakeholder input, a vision was defined and design guidelines and standards were then created to achieve this vision.

ArcGIS was utilized to evaluate existing land use patterns and identify key patterns for policy implementation. Sketchup was used to provide a 3D illustration of the vision for the corridor, evaluate the effects of proposed development standards, and apply those standards to differing development scenarios. This process provided decision makers with the ability to visualize the impacts of the proposed changes and allowed for clear understanding of the new zoning standards.

Session Track II – 10:30am to 11:30am

Raising the Value of a Local Government GIS Using a GIS-Centric Work Order and Permitting System

Justin Cure, GISP, CGCIO, City of Longview, Texas

GROGANS MILL

The City of Longview, Texas GIS Division was formed in 2005 to serve the geographic needs of the entire City. In 2008, The Department of Public Works asked for help selecting a new work order system. Cityworks by Azteca Systems was selected because the GIS is at the center of the work order management system. Public Works went live in 2009 and the rest is history. Recently, it was implemented for the entire development process. It is used across most City Departments and by the actual citizens themselves. Plans are being made for integration with even more tools. Longview had a good enterprise GIS, but a GIS-centric work order management and permitting system made the GIS more valuable than ever before.

Low-Cost GIS for Today’s GIS Professionals

Adam Hill, Blue Marble Geographics

INDIAN SPRINGS

GIS technology is now part of the daily workflow for oil and gas businesses of every size. No longer constrained by overly complex software requiring highly skilled technicians, or by expensive acquisition and maintenance costs, GIS professionals are learning the value of GIS self-sufficiency. In this presentation, we will take a look at low-cost GIS software alternatives that



are ideally suited to the challenges of today's GIS professionals. Using Global Mapper we will demonstrate some of the basic principles of GIS development, where to find data, and efficient spatial data management.

CAD to GIS: A complete conversion in the real world

David J. Littlejohn, CEC // Infrastructure Solutions

THE WOODLANDS

The worlds of CAD and GIS are moving closer together but there are still many challenges to large scale conversion. This presentation will highlight the strategy, processes and technical details involved in a real-world conversion of state-wide fiber optic cable design and as-built data to a complete ESRI geodatabase and a connected fiber optic cable network. The project performed by CEC for the Oklahoma Department of Transportation will be the background for sharing our experience with CAD features and formats, CAD clean-up and GIS conversion processes.

EPSG, WKID, WKT: A simple standard for spatial reference system identification

Denver Pierce, Alan Plummer Associates, Inc.

THE WOODLANDS

Spatial reference systems can be quite confusing, and it can be very easy to miss-identify, miscommunicate, and make mistakes with them. Fortunately, there exists a standard that is supported by ESRI, Autodesk, various FOSS tools, NOAA, USGS, most popular spatial databases, and countless other tools that can simply and uniquely identify a projection and datum combination using only a 4-6 digit code. This standard for GIS and spatial projects can be used in many software packages and can be referenced in maps and documents to quickly and easily identify projections and datums independent of the need for converting file formats or projecting/reprojecting files between different software or databases by using a single well-maintained reference dataset of spatial reference system.

Session Track III – 1:00pm to 2:00pm

Evaluating the Use of UAV's for Local Government

Kevin Earl, City of Pharr

GROGANS MILL

The use of UAV's is becoming popular today by government entities of all sizes. Law Enforcement, Fire Departments, and Emergency Management personnel are all getting in on the craze. That is all great but what does it really take to make your UAV beneficial to you and your job. I want to share my experience in beginning to own and operate a UAV. Go over terminology of devices, products and what they do. What you are going to need. Begin by

acknowledging its' purpose. What are the pro's and con's of operating a UAV? Where do you begin? Is it worth doing in-house or hiring a business to get it done for you? We will examine the knowledge needed and expenses acquired with operating your own UAV as opposed to hiring someone to get video or photos that you may need to get the job done. You will understand what it is to become a UAV operator and maybe even build your own. It can produce amazing video or aerial photos but can also cost much more than anticipated due to lack of planning and knowledge. A UAV course for newbie's who would like to learn more on the operations of implementing their own UAV for GIS.

New Cool Toy for GIS Mapping

Ashok Wadwani, Applied Field Data Systems

GROGANS MILL

GIS mapping has become widespread and literally every agency, company is extensively mapping with GPS or using data collected with GPS. As the GPS market is growing, the Geospatial industry is working hard to get new and improved products. One such product is the IKE- an integrated GPS/COMPASS/LASER/CAMERA all in one unit. Not only can you use the unit for regular offset mapping but one can do missing lines, line sags, heights, and tree assessments with the unit. All the data including pictures is displayed on the screen as you collect it. One additional feature is the capability of taking a picture of a pole or a structure and calculating the heights of different attachments etc later in the office. Feature /attribute questions with pull down menus can be easily configured. The unit runs Windows mobile OS, so ARCPAD can be easily installed on the unit.

Applications include Pole audits, asset mapping, disaster management, geophysical mapping etc. Users are able to collect data with this device much faster, safely and accurately than using traditional GPS receiver, laser range finders and camera.

The presentation will cover some typical applications using this new tool

OKMAPS E-911 Collaborative Project

Shellie Willoughby, GISP, OK Office of Geographic Information

Charles Brady, III, GISP, City of Ardmore

INDIAN SPRINGS

Two years ago the Oklahoma GI Council developed a workgroup to create Address Standards for the State of Oklahoma. With the help and input of the OK GIS Community a draft version of the OK Address Standards are out for community review. As a result of this project 9 counties in southern Oklahoma have come together to develop an E-911 collaboration. This collaboration has worked to import their E-911 data into OKMAPS, an on line mapping system developed by the Oklahoma Office of Geographic

Information. This presentation will discuss the E-911 initiative while highlighting the OKMAPS on line viewer.

LiDAR; Huh That Was Easy

J. Scott Sires, Brookhaven College, Geotechnology Institute

THE WOODLANDS

Brookhaven College students wanted to learn something about LiDAR data, processes and possibilities. This session shares the recent effort to learn about and use LiDAR; Brookhaven students tackled a project to evaluate the volume and location of trees on the 192 acre college campus. At that time Brookhaven was developing an application for the Arbor Day Foundation to earn the Tree Campus USA designation. This session will discuss the experience of classifying multiband imagery and integrating easily available LiDAR data to yield a campus-wide tree assessment. The students' work resulted in maps that were included in the Arbor Day application. The session will also share LiDAR data sources and the ArcGIS Desktop methodologies applied during the project.

Session Track IV – 3:00pm to 4:00pm

Aerial Patrol Software: Updating and Upgrading

Jessica Rice, ONEOK

GROGANS MILL

ONEOK Partners NGL Pipeline must be inspected 26 times annually per federal regulations. The software being used to facilitate the pilots was significantly out of date and needed upgrading. This was not a simple upgrade because of employee turnover, data changes and the substantial differences between the current hardware and software and the latest technology. This was compounded by the need to keep the program simple and easy to use by the pilots as they flew the routes each week. This presentation will explore the challenges faced and the decisions made during the process to bring our piloting software up to date.

Operations Dashboard – A Pilot Project for Corporate Security

Chloe Howlett, Jennifer McCanne, & Katy Rich, Access Midstream

GROGANS MILL

Access Midstream (ACMP) operates in 9 states across the United States. With this geographical diversity come challenges in ensuring the safety and security of property, assets, and personnel. ACMP's Corporate Security team is tasked with this duty and currently utilizes multiple programs to monitor weather threats, crime data, and fleet vehicle locations among other security matters. Since these programs do not "communicate" with each other, it



isn't possible to get a complete picture in one place. Furthermore, most of the programs do not include ACMP's asset locations or other sensitive data because the security of that data cannot be guaranteed outside of ACMP's firewall. Because of these issues, ACMP's GIS Department is piloting a project that utilizes Operations Dashboard to bring security related data together in a single view. This presentation will discuss the technical requirements, implementation of phase one, lessons learned and ACMP's future plans for Operations Dashboard.

Outrageously Dependable GIS

Garri Grossi, Interstate Batteries

INDIAN SPRINGS

It is known that GIS is a valuable tool in the world of business - marketing in particular. This discussion will cover the use of spatial awareness in Market Intelligence including the importance of system architecture and design, Business Information system integration, supply chain management, and more.

Increase Effectiveness Through LGIM For Water Utilities

Kevin Stewart, GISi

INDIAN SPRINGS

Aqua Water Supply Corporation's case study of adopting Esri's LGIM to streamline data management processes and implementation of web/mobile templates to increase operational awareness.

Expanding the Reach and Power of Your Data with HERE Maps

Travis Franz, HERE - a Nokia business

THE WOODLANDS

Location-based devices and services are all around us—they've become a vital part of culture. From smart phones to navigation devices to enterprise applications, all are likely powered by a commercial map. And because the masses use these devices and services, they're relying on the accuracy and validity of commercial maps. As a result, more and more communities and government entities are contributing their local knowledge and sharing data with commercial data vendors, in order to maximize the use and application of the data and make the map in their locale as accurate as possible.

Perhaps the most well-known and trusted commercial map vendor today is HERE, formerly known as NAVTEQ. The HERE Map is found in a wide array of places, including online map applications, in-dash and personal navigation systems and is used by companies in all walks of life, ranging from fleet management operations to emergency management. In this session Travis Franz from HERE will discuss their map and how it's maintained

thru contributions via their community program and local GIS data acquisition channels.

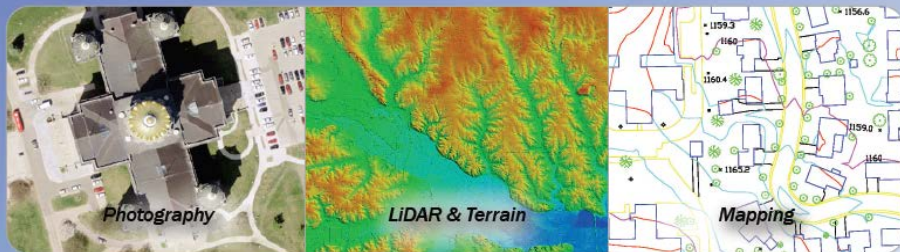
First Responders and GIS Professionals: Sharing First-hand Experiences and Solutions

Capt. Scott L. Trapolino, GISP, DeSoto County & Eudora Fire Department

THE WOODLANDS

Many times breaking down the barriers between GIS Professionals and First Responders (Police, Fire, EMS, SAR, etc.) can be a daunting task. Let's be honest – there are very few First Responder GIS Professionals. As a GIS Professional and First Responder I strive to incorporate GIS to assist others in accessing, managing, and analyzing information in a manageable format. Working with multiple organizations in emergency situations, whether large or small scale, there is a major disconnect from technology-based professionals and emergency management professionals. In this presentation I will share some practices and first-hand experiences that will give GIS Professionals enhanced concepts on how to break down technology barriers and provide good operational relationships during emergency situations.

Accurate Remote Sensing Data & Experience To Provide Solutions You Need



Aerial Services, Inc.'s integrated team of professionals has provided premier geospatial services to clients across North America for over 45 years. Add their two Leica Aerial Digital Sensors & Riegl LiDAR Scanner to this experience and they can do even more.



When planning your next geospatial project, consult the experts at Aerial Services. Visit www.AerialServicesInc.com to learn more.

Aerial Services, Inc. • Cedar Falls, Iowa
319-277-0436 • www.AerialServicesInc.com



VENDOR BIOGRAPHIES

PLATINUM

Western Data Systems is an authorized Trimble Dealer specializing in the sales, rentals, training and technical support for Survey, Mapping, Marine, Utility, Environmental, Fleet Management and Seismic Industries. WDS was founded in 1982 and since then has concentrated



on supplying top of the line Spatial Measurement and GPS related products in Texas and Oklahoma for sales and worldwide for rentals. We offer several peripheral items such as pipeline locators, ground penetrating radars, laser rangefinders, laser scanners, GPS cameras, barcoders, tablets and much more. WDS has two full Survey Supply stores in Texas and delivers wood, stakes, flags and any supply needed daily. With our extensive rental fleet we have more than enough gear to get you through any job and can ship worldwide. Our Technical Support staff is comprised of a staff that has worked in the field and can help out with any support need you have. We offer free support to both our rental and sales customers. WDS also manages the largest private VRS Network in the world. This network is available to both Survey and Mapping communities. We are adding base stations continuously and the amount of users grows each year. For a full line of our

products and Services please visit our website at www.wds-us.com. With six offices across Texas and Oklahoma you are never too far from The Experts!



GOLD

Trusted by thousands of GIS professionals around the world, Blue Marble Geographics is a leading developer of software products and services for geospatial data conversion and GIS. Pioneering work in geomatics and spatial data conversion quickly established this Maine-based company as a key player in the GIS software field. Today's GIS professionals are turning to Blue Marble for Global Mapper a



low cost, easy-to-use yet powerful GIS software tool that everyone can afford and use. Blue Marble is known for coordinate conversion and file format expertise and is the developer of Geographic Calculator, GeoCalc SDK, Global Mapper, GM LiDAR Module and Global Mapper SDK.



Since 1986, Cityworks® has been providing innovative GIS-centric management software to public agencies that own and care for infrastructure and property. Built exclusively on Esri's ArcGIS technology, Cityworks is a powerful, scalable, and affordable platform for asset management, permitting,



Cityworks®

licensing and more. Time-tested and proven technology, Cityworks is Empowering GIS® at more than 500 user sites around the world.

SILVER



Aerial Services, Inc. (ASI) is an integrated team of professionals providing premier Aerial Acquisition, Digital Ortho, Vector Mapping, Terrain & LiDAR services to government, utilities, engineers, and other geospatial clients. Based in the Iowa heartland for over 45 years, Aerial Services' strong work ethic, cutting-



edge technology, and experienced staff combine to harness the power of geographic information and provide solutions you need.

Cyclomedia is the market leader in systematic imaging of large-scale environments from cities to complete countries. Cyclomedia's smart imagery solution creates Cycloramas – 360-degree panoramic photos – with high accuracy, providing current and clear views of street-level environments.



The Cyclomedia recording system is like no other. It uses patented technology to determine the exact position and orientation of every picture taken. By creating a dense network of geometric street images, Cycloramas are always focused on the correct address or feature from multiple vantage points. Our solution revolutionizes the way asset and property assessment is managed and reported. It reduces field visits and provides accurate feature measurements with convenient spot-checking. It simplifies maintenance and enables automated inventory and controlled processes. It also saves valuable

cyclomedia

resources while simplifying the decision-making process, improving operations and increasing efficiency.

Our primary market segments include:

- Property Taxation, Appraisal, and Building Inspection
- Transportation and Infrastructure Management
- Public Safety and Homeland Security
- Engineering and Construction Planning

Esri® helps organizations map and model our world. Esri's GIS technology enables them to effectively analyze and manage their geographic information and make better decisions. They are supported by an experienced and knowledgeable staff and an extensive network of business partners and international distributors.



Every year, Esri reinvests more than 20 percent of its revenues in research and development to ensure users have the best tools possible to accomplish their missions. A comprehensive suite of training options helps them fully leverage their GIS. Esri actively supports organizations involved in education, conservation, sustainable development, and humanitarian affairs by donating hundreds of millions of dollars in software, training, consulting, and project support.

Surdex has been recognized as a premier geospatial data provider since 1954, supplying accurate information on time and within budget. Our success is attributed to our focus on client satisfaction through timely delivery of quality products and continuous innovation from our investment in staff and equipment resources.



Suredex provides orthophotography; planimetric and topographic maps; LiDAR; and geographic information solutions to both governments and private companies in North America. A distinguisher for Suredex is our focus on all phases of geospatial data services products, from acquisition—with our fleet of nine aircraft—through final production of all deliverables and data. We have a highly-trained and experienced staff that provides complete geographic solutions customized to each client's needs.

STANDARD

Applied Field Data Systems Inc., based in Houston is a systems integrator offering GPS/GIS mapping systems. Our products include GPS receivers, Laser Range Finders, Rugged PDA'S , Tablet PC, GPS enabled camera, Field Data Collection Software, GIS software etc..We also offer GIS services such as digitizing, application development, data management,



custom GIS programs and training.



GISi is an award-winning GIS professional services firm located in Birmingham, Ala., with offices throughout the United States. GISi has a passion for delivering customer driven location technology solutions to federal, state and local governments, and commercial organizations.



The International Disaster and Conference Exposition (IDCE) is an annual international forum that brings together leading public and private sector professionals to address the critical areas of disaster mitigation. IDCE focuses content and programming around the principal of public-private partnerships as the key component to planning, response and recovery efforts on a national and international scale. For more information, please visit: www.idcexpo.net.



Latitude Geographics has helped people succeed with web-based geography by enabling them to make better decisions about the world around them. Geocortex software by Latitude Geographics transforms how organizations design, build and maintain Esri ArcGIS Server and ArcGIS Online applications.



Geocortex allows organizations to do more; faster, at less cost and risk. Our off-the-shelf approach makes it easy to create and maintain applications while ensuring end-users consistently benefit from a positive web-based GIS experience. Best of all, organizations effectively future-proof their ArcGIS investments by readily accommodating technology change over time. In 2010 Latitude Geographics was recognized as an Esri Worldwide Partner of the Year and one of the first to be named as an Esri Platinum Partner. Please visit www.geocortex.com for more information.



Established in 1986, NTB Associates, Inc. (NTBA) has experienced significant expansion in staff and capabilities. The professional staff includes GIS application specialist, programmers, database administrators, civil and structural engineers, and land surveyors. We provide expertise in the following areas:



- GIS/GPS
- Boundary Surveys
- Topographic Surveys
- Hydrographic Surveys
- Route and Utility Surveys
- Local Roadway/Drainage Improvement
- Major Highways and Interstate Design
- Hazardous Material Surveys
- Bridges and Structural Design
- Water/Wastewater Systems

In the GIS services area, NTBA provides clients with turnkey solutions for a wide variety of issues. Our services include:

- Database design, development, and management
- Asset Management/Work Order Management
- Project design and management
- User training and support
- ArcServer implementation
- Data conversion and creation
- GPS field collection and inventories
- GIS System integration
- Enterprise GIS solutions
- GIS needs assessments
- Custom application development



RazorTek Inc. is a privately held GIS and Remote Sensing consulting firm specializing in design, development and automation of complex systems for spatial data display and analysis. Established in 2002, RazorTek serves both the private and public sectors in providing services and technology assistance. We also offer onsite GIS training, data conversion services, data development, Georeferencing, image processing and feature extraction. RazorTek is an authorized reseller for ESRI, LizardTech (GeoExpress), RapidEye and a provider for satellite imagery from Digital Globe, Astrium, and a provider for aerial photography from linch to 2 feet and LiDAR collects if needed.



RazorTek is certified by the SBA as an 8(a) company and certified as a DBE (Disadvantage Business Enterprise) by the Tennessee Department of Transportation in addition we are certified as a MBE(Minority Business Enterprise) by the State of Tennessee and the NCTRA (North Central Texas Regional Certification Agency) in Texas.If more information is required for



RazorTek capabilities please contact us by email (danr@razor-tek.com) or call us at 901-922--5448.

Sharpen Your Technology



Inner Corridor Technologies, Inc. – TeachMeGIS – is a leader in Geographic Information Systems (GIS) consulting and training. Staffed with GIS professionals who have extensive experience, our ESRI Authorized Partner Education Center offers high quality training, locally and across the nation, at a reasonable price. Our professional GIS consulting staff are available for



short- or long-term projects. Please call us if you need help meeting your company's GIS goals.

United Geo Technologies, LLC, your geospatial service provider, offers a wide range of professional services such as photogrammetry, orthophotography, parcel mapping, and geographic information systems. This small, woman owned business has two Certified Photogrammetrist's on staff, and our personnel have extensive experience in the following areas:

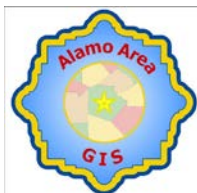


- Aerial Imagery Acquisition (both analog and digital)
- Aerial Film Scanning
- Contour Generation
- Digital Elevation Models (DEM)
- Digital Orthophotography and Mosaics
- Image Compression (MrSID, JPEG2000, ECW)
- LiDAR DTM and Contour Generation
- Airborne GPS
- CAD (MicroStation and AutoCAD)
- Digital Aerial Triangulation
- Digital Terrain Models (DTM)
- Parcel Mapping
- Plan and Profile
- Planimetric Feature Extraction
- Geographic Information Services (ESRI)
- Volume Computations



United Geo Technologies, LLC

STATE & SUBCHAPTERS



The Alamo Area GIS Users Group (AAGIS) is a Professional Organization which strives to bring together GIS and Geotechnology Users and Professionals from in and around the San Antonio, TX area. Our three main goals are 1. Sharing GIS related presentations, workflows, and ideas amongst and between group members. 2. Establishing a Professional and Social GIS

Network in and around the San Antonio area. 3. Educating the Public on what GIS is and how it can help the Public and Society in general.



The East Texas GIS & GPS User Group (ETUG) is designed to bring together users at any level in public, private, and educational sectors who are interested in geospatial technology. ETUG encourages open dialogue, public awareness, education, data sharing, professional growth, and industry representation to assist its membership in their profession.



The purpose of OKSCAUG is to act as a professional forum as a State Chapter of the South Central Arc User Group (SCAUG) to promotes the sharing and exchange of ideas, information and techniques concerning the utilization of Environmental Systems Research Institute (ESRI) software among GIS professionals and other interested individuals. OKSCAUG also promotes

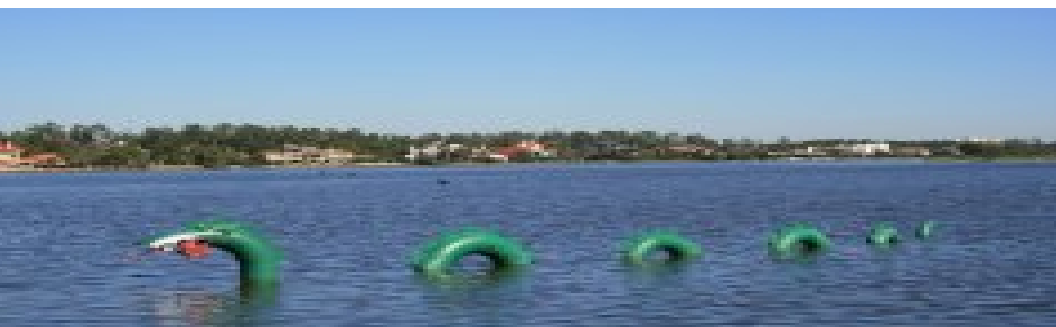
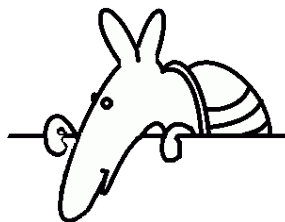
the professionalization of geospatial information and technologies.



The RGVAUG is a service oriented organization whose goal is to bring together users at any level in public, private and educational sectors who are interested in geo-technology. This group will facilitate open dialogue, public awareness,

educational resources, data sharing, professional growth and representation to assist its membership in their everyday jobs.

**TUG says:
Redeem those Vendor
Drink Tickets at the
Vendor Reception on
Thursday, March 13th
starting at 4pm!**



RazorTek

Sharpen Your Technology

Dan Rodriguez
Satellite and Aerial Mapping

Services

- Image processing
- Data Conversion
- Data development
- Web programming
- Data extraction
- MrSid compression
- MrSid reprojection
- MrSid Mosaic

Products

- Aerial Photography
- Satellite Imagery
- LiDAR
- LizardTech (MrSID)
- GeoExpress
- ESRI products
- ArcGIS 10.2.1
- Extensions

www.razor-tek.com danr@razor-tek.com
(901)-922-5448



Airborne Acquisition | LIDAR Acquisition & Processing
Digital Orthophoto Production
Planimetric Mapping | Topographic Mapping | Change Detection
Contour Generation | Impervious Surface Mapping

Ed Turner, VP of Business Development | Tel 636-360-4400 | EdT@surdex.com
520 Spirit of St. Louis Blvd. | Chesterfield, MO 63005 | www.surdex.com



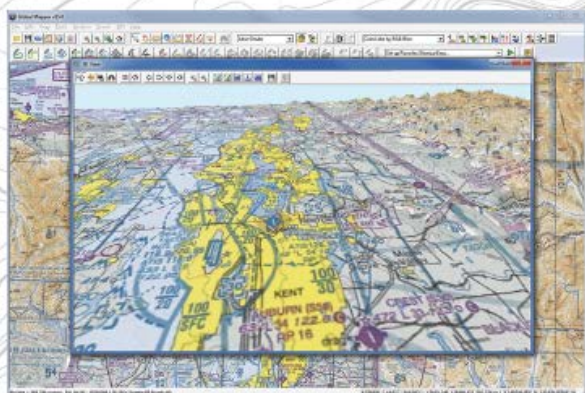
BLUE MARBLE GEOGRAPHICS

MIND THE GAP BETWEEN WORLD AND MAP



Is Low-cost GIS Attainable for Everyone? Stop by our booth and find out!

Global Mapper is a low-cost and easy-to-use desktop GIS application that offers access to an unparalleled variety of spatial datasets and provides just the right level of GIS functionality to satisfy both beginner and expert users.



Global Mapper's key features:

GIS Software • Data Tiling and Mosaicing • Terrain Analysis
Data Importing/Exporting • Supports Over 225 Formats
Map Printing and Web Publishing • GPS Tracking • Geocoding
Spatial Database Support • LIDAR Analysis and Reclassification
Image Rectification • Access to Online Data • Scripting

SOFTWARE APPLICATIONS:

The Geographic Calculator
Global Mapper
GM LIDAR Module
Global Energy Mapper

SOFTWARE APPLICATIONS:

GeoCore SDK
GeoCalc SDK
Global Mapper SDK

PROFESSIONAL SERVICES:

Geomatics Consulting
Geodesy & Software Training
GIS Project Development

77 WATER STREET, HALLOWELL, MAINE 04347 USA
800.616.2725 / +1.207.622.4622 / FAX: 207.622.4656
44° 17' 15.40" N, 69° 47' 24.55" W, WGS84

WWW.BLUEMARBLEGEO.COM

GISP CHECKLIST

Description	Classification	Credit	Re-Cert Credit	Credits Earned
2½ Day Regional SCAUG Conference in The Woodlands, TX (20 hour)				
Attendee (0.1 x # of days attended)	EDU	0.25	3.33	
Presenter (1 point per instance)	CON	1	3	
Poster Presenter (1 point per instance)	CON	1	3	
Poster Award Winner	CON	2	6	
1/2 Day Training (4 hour) <i>(Training Certificate required for documentation credit.)</i>				
GNSS	EDU	0.1	0.67	
Coordinate Systems “Holy Shift, What Coordinate System do I use?”	EDU	0.1	0.67	
ArcGIS Mobile with Trimble Positions for High Accuracy Data Collection	EDU	0.1	0.67	
Ground Penetrating Radar & 3D Laser Scanning	EDU	0.1	0.67	
ArcGIS Online - Build It & Make Sure They Come!	EDU	0.1	0.67	
Preparing Your Data for Community Maps	EDU	0.1	0.67	
1/2 Day Training Instructor :	EDU	3	9	
1 Day Training (8 hour) <i>(Training Certificate required for documentation credit.)</i>				
Python for ArcGIS – An Introduction	EDU	0.2	1.33	
GIS Editing 101	EDU	0.2	1.33	
1 Day Training Instructor :	EDU	3	9	
2 Day Training (16 hour) <i>(Training Certificate required for documentation credit.)</i>				
ArcGIS 4: Sharing Content on the Web (10.2)	EDU	0.4	2.67	
Migrating to ArcGIS 10.2 for Server	EDU	0.4	2.67	
2 Day Training Instructor :	EDU	3	9	
TOTAL GISP CREDITS EARNED				

APPLIED FIELD DATA SYSTEMS, INC

Integrated Solutions for GPS/GIS Mapping Systems & Services

YOUR SOURCE FOR:

GIS SERVICES

***DIGITIZATION, APPLICATION DEVELOPMENT,
CONSULTING / TRAINING***

MAPPING SYSTEMS

***GPS RECIEVERS, LASER RANGE FINDERS,
GPS ENABLED CAMERA, FIELD DATA COLLECTION SOFTWARE,
RUGGED HANDHELD PDA TABLET COMPUTERS,
LOCATORS/MARKERS***



NTB Associates, Inc.
Engineers - Surveyors - GIS



Partner Network
Silver

Cityworks
Averis & Systems, Inc.

Experts in:

- Database Development and Management
- Data Conversion and Creation
- Utility Mapping
- Parcel Mapping
- Custom Applications
- Asset Management Solutions
- System Integration
- ESRI Authorized Training
- ArcServer Implementation
- Needs Assessment/Project Management

469.888.5044

www.ntbainc.com

Dallas / Fort Worth, TX - Shreveport, LA - Baton Rouge, LA - Little Rock, AR - Mountain Home, AR

TEACHMEGIS.COM
GIS TRAINING CENTER

TEACHMEGIS.COM, ESRI, and ArcGIS are trademarks, registered trademarks, or service marks of ESRI, Inc. All other trademarks are the property of their respective owners. ESRI products are used herein by permission of ESRI.

esri Partner Network

Teaching GIS Across the Globe. Call Us. We'll Come.



Experienced, Esri®
Certified Instructors



Private Classes Available



Custom GIS Courses

713-278-7883

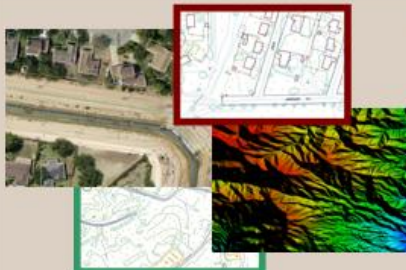
info@TeachMeGIS.com



UGTI
United Geo Technologies, LLC

Patsy Ingram, President
p Ingram@unitedgeotech.com

Roger L. Stack,
Certified Photogrammetrist
Senior Vice President
rstack@unitedgeotech.com



**Specializing in Digital
Photogrammetric Mapping,
Orthophotography and
Geographic Information
Systems (GIS)**

United Geo Technologies LLC

Former Stewart Geo Technologies
A small woman-owned business
7715 Mainland, Suite 110
San Antonio, Texas 78250
Phone: 210.684.2147
Fax: 210.764.5022
www.unitedgeotech.com

The Woodlands Waterway Marriott

Upper Level



☆ 1. AERIAL SERVICES INC

2. GIS INC

3. TEACH ME GIS

4. RAZORTEK

★ 5. ETUG

6. NTB

★★ 7. CITYWORKS

☆ 8. ESRI

★ 9. WESTERN DATA SYSTEMS

10. UNITED GEO TECHNOLOGIES

★ 11. BLUE MARBLE GEOGRAPHICS

★ 12. RGVAUG

★ 13. OKSCAUG

14. APPLIED FIELD DATA SYSTEMS

15. LATITUDE GEOGRAPHICS

☆ 16. CYCLOMEDIA

☆ 17. SURDEX

★ 18. AAGIS

Additional Vendor Sponsors not hosting a booth include:

- Access Geographic

- International Disaster Conference & Expo

- GIS Nuts

★ Platinum Sponsor

★ Gold Sponsor

☆ Silver Sponsor

★ State or Sub Chapter

Please take a moment to thank the vendors for their interest & contributions to SCAUG over the years.



Your Trimble Sales and Rental Specialists

Allison Alford

Houston-Southeast TX

Regional Sales Manager
14722 Regnal Street
Houston, TX 77039

O: 888-700-5211

C: 281-797-2649

Cody Cantrell

North Texas - DFW

Regional Sales Manager
545 Commerce St. Ste. 100
Southlake, TX 76092

O: 877-902-8112

C: 469-865-8715

Robbie Trcka

Central and West Texas

Regional Sales Manager
10822 Hillpoint
San Antonio, TX 78217

O: 877-300-9659

C: 512-826-4290



Trimble®

Authorized Dealer

