

EMERGENCY GIS RESPONSE TEAM

[www.TexasEGRT.org](http://www.TexasEGRT.org)

# Purpose

- ▣ Organize into a deployable resource that can be called up in an emergency
- ▣ Train GIS professionals to perform emergency response mapping
- ▣ Enhance the mapping capabilities of emergency responders across our region

# Origins

- ▣ Founded in 2006 after the Space Shuttle Columbia Incident
- ▣ Operating area was 14 cities in Northeast Tarrant County
- ▣ Worked in conjunction with the NEFDA group
- ▣ Utilized NEFDA Mobile Command Post

# Training

- ▣ Developed the initial training for NEFDA
- ▣ Compiled GIS Datasets
- ▣ Developed SOG and Response Templates
- ▣ Require FEMA ICS Training
- ▣ Conduct On-site training classes
  - How to respond to an event
  - How to use the Tx EGRT Templates
  - How to work with EMC's to provide critical mapping



# EGRT Training

- The training required for EGRT includes several FEMA online independent study courses on the Incident Command Structure (ICS)
  - ▣ **IS-100.b:** Introduction to Incident Command System
  - ▣ **IS-700.a:** National Incident Management System (NIMS) – An Introduction
  - ▣ **IS-103:** GIS Specialist
  - ▣ Tx EGRT Specific classes (online and classroom)
  - ▣ Participate in Local or Regional Exercises
- ▣ IS-922: Applications of GIS for Emergency Management (optional)

# Training

- ▣ The training guide was developed after consultation with specialty response teams

## Wilderness Search & Rescue—Flatlands

A person has been reported missing in a wilderness area. This technique is for flat, open area. If the area is rough terrain or if there are prevalent trails, see Wilderness Search & Rescue—Mountain for details

1. Open the Wilderness Search Rescue template. It contains the following items:
  - Rescue Locations feature class
    - Rescue Location Points
    - Search Grid
  - Incident Facilities (see COP symbology)
  - COP Actions (see COP symbology)
  - COP Zones (see COP symbology)
2. Add the LOCATION of the subject's last known location to the map.
3. Add the location of the Rescue Team(s)
4. Create a 1,500 foot buffer around the last known location and label. (other distance may be specified)
5. Draw a 1500' x 1500' grid square over the ringed area parallel to trails, roads, or parking lots. This will be four grids and represent the initial search area or 'Hasty Search'. (other distance may be specified)
6. If reports of any found items are reported, add them to the map and label.
7. When initial search is over, they will begin a grid search. Copy/paste the grid polygon and move outward from the initial site. If they are numbering the search grids, you can add the number to the table and label them. Lay out the grid using the symbol "Not Searched" and change color if search is completed.
8. Note the starting point for labeling the grids over the 'Hasty Search' area (shown below). This allows the alpha portion of the grid ID to remain sequential with even grids going North and odd grids going South.
9. Rescuers may want to label each grid with the assigned search team.

J-4			J-4	L-4	M-4
J-2 M-2	K-2	L-2	L-1		
J-2 M-1	K-1	L-2			
J-3	K-3	L-3	M-3		

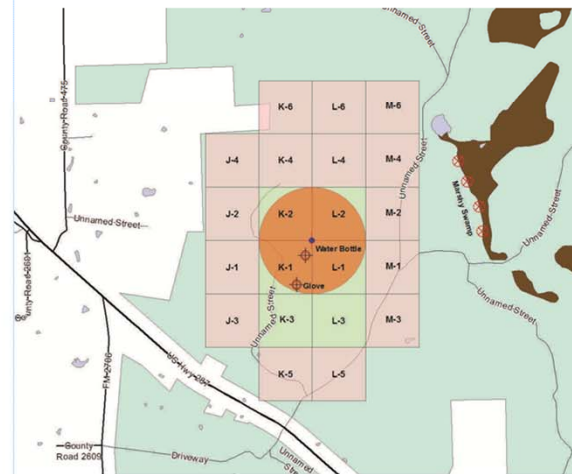
## Wilderness Search & Rescue—Flatlands

"Hasty Search" radius Search Grid size

\_\_\_\_\_ or 1500 feet \_\_\_\_\_ X \_\_\_\_\_ Or 1500' x 1500'



The sample map shows the location of a person lost in a flatlands area. The 'Hasty Search' area is searched first, then the grid. Any items found are marked as clues, and any hazards are noted.

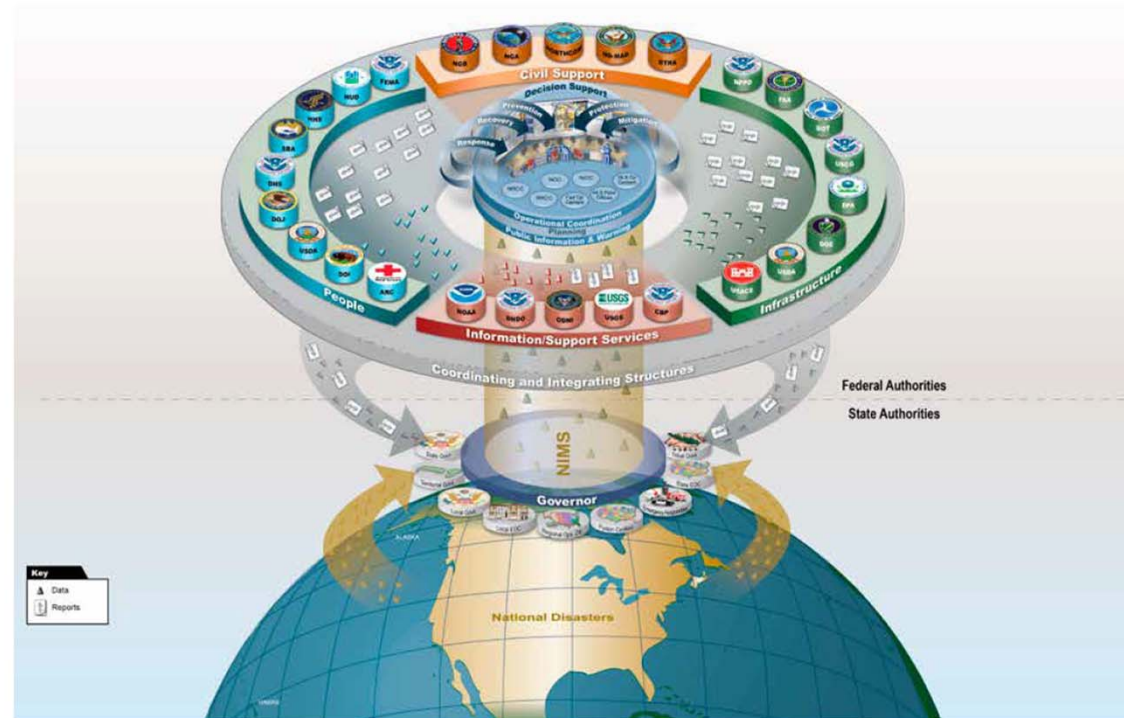


# Operating Environment

- ▣ We're building the organization at the grassroots level

Homeland Security Geospatial Concept of Operations (GeoCONOPS)

## Geospatial CONOPS Community Model



# Operating Environment

- ▣ National Alliance for Public Safety GIS Foundation (NAPSG)
  - We've partnered with them to use their SOG for state and local GIS support
  - They've developed scenario based training for basic GIS response, coastal storms / oil spills, wildfires
  - I'm working on one of their documentation teams now to participate in the development of the response scenario for tornado response

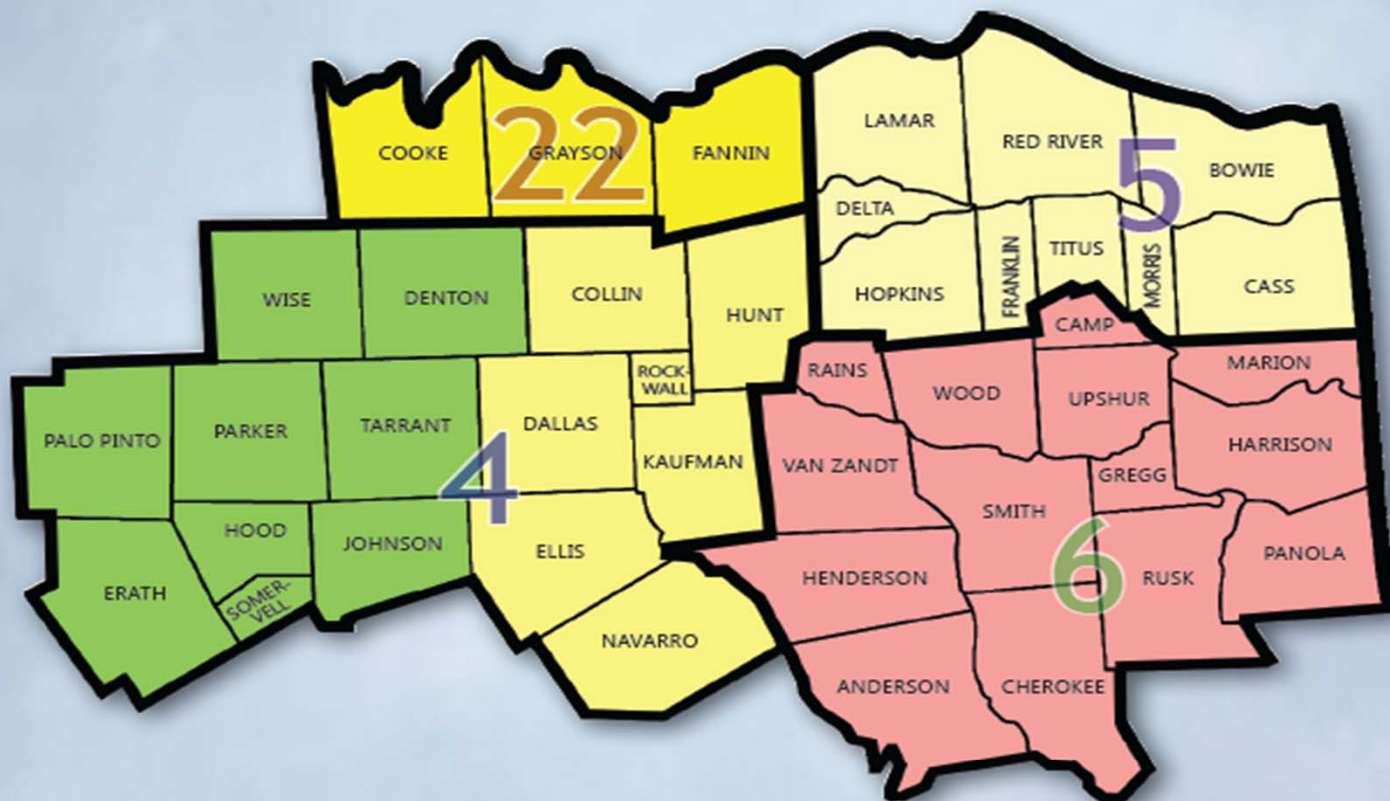


# Responses

- ▣ As NEFDA
  - Flooding
  - Straight Line Wind events
  - Traffic Control for apartment fires
  - Remote assistance with Hurricane Ike
  - Remote assistance with Possum Kingdom Wildfires
- ▣ As Tx EGRT
  - Red Oak Full-scale Exercise
  - Hood County Full-scale Exercise
  - Dallas Ebola response – Disaster District 4 Garland EOC
  - Denton Co. Controlled Burn (upcoming)



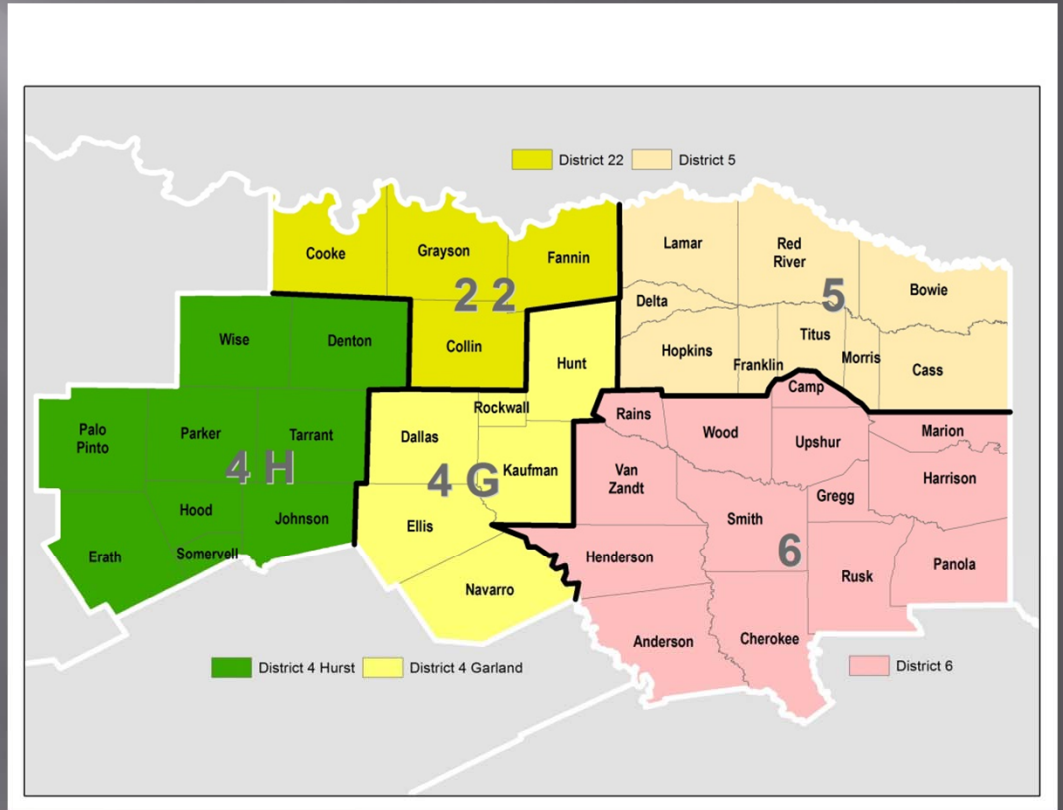
# TEXAS DEPARTMENT OF PUBLIC SAFETY REGION 1



# EGRT Response

- Texas EGRT follows the same response areas as DPS to maintain consistency.

- The Region 1 EGRT covers 42 counties and 8.1 Million people



# EGRT Response

- ▣ Texas EGRT responds to any agency that requests GIS support
  
- ▣ Call the toll free number
  - 1-844-Tex-EGRT or 1-844-839-3478

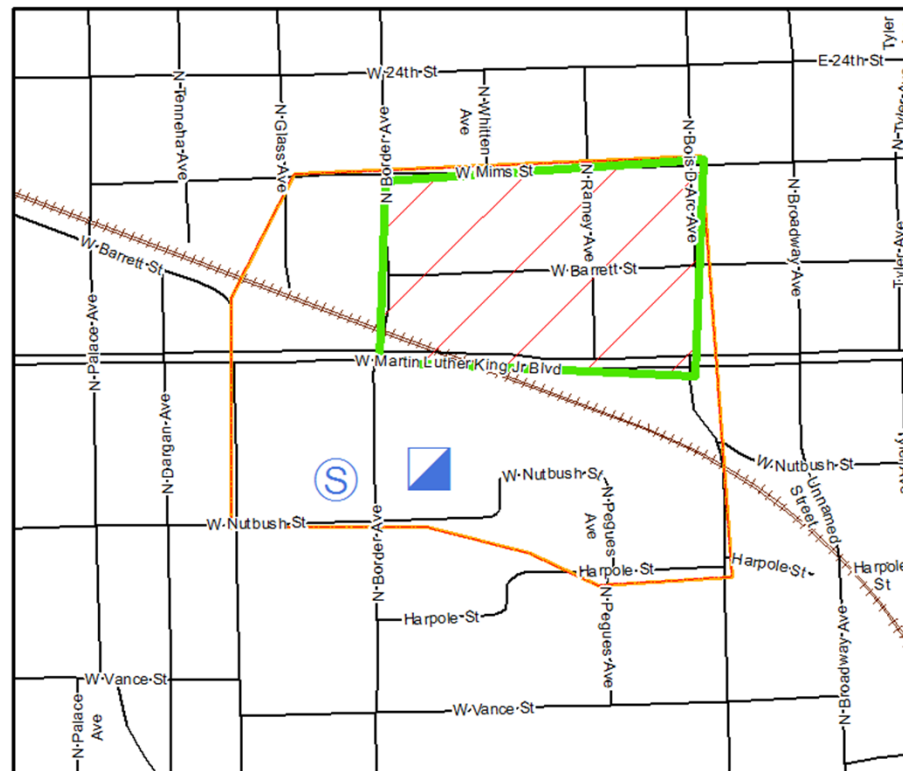
# EGRT Response

- ▣ The job will be to provide the three basic maps:
  - Common Operational Picture
  - Incident Action Plan
  - Initial Damage Assessment / Detailed Damage Assessment
- ▣ In addition, there may be specialty maps required:
  - Bomb Evacuation Plan
  - Chemical Spill / Plume Model
  - Swift Water Rescue
  - Search and Rescue
  - Etc...









#### Action Items:

- Establish barricades at perimeter of evacuation zone
- Set up shelter at Jr. High School
- Set up staging area



#### Incident Action Plan

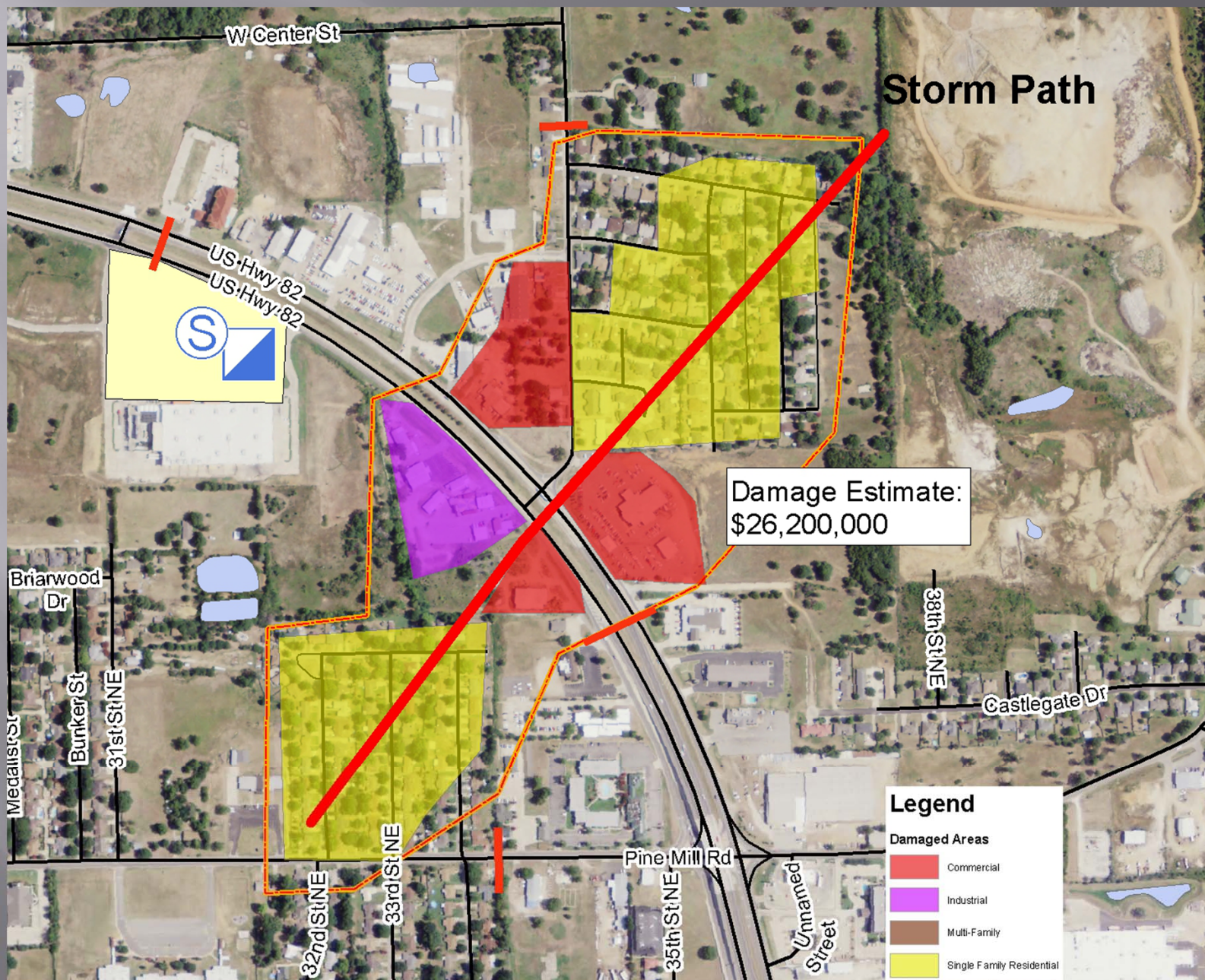
Gas Well Explosion - Graham Ranch  
City of North Richland Hills, TX

Timestamp: 7/30/2014 8:49:22 AM

Disclaimer:

0 225 450 Feet  
0 0.02 0.04 0.08 Miles







# Dallas Ebola Response

- ▣ Texas EGRT went live on Oct 1<sup>st</sup> ...
- ▣ On Oct 12<sup>th</sup> we were called for our first response
- ▣ Disaster District 4 Garland asked for a mapping unit to be deployed to the District EOC
- ▣ Over the 8 days of the response, we deployed 15 different Tx EGRT members

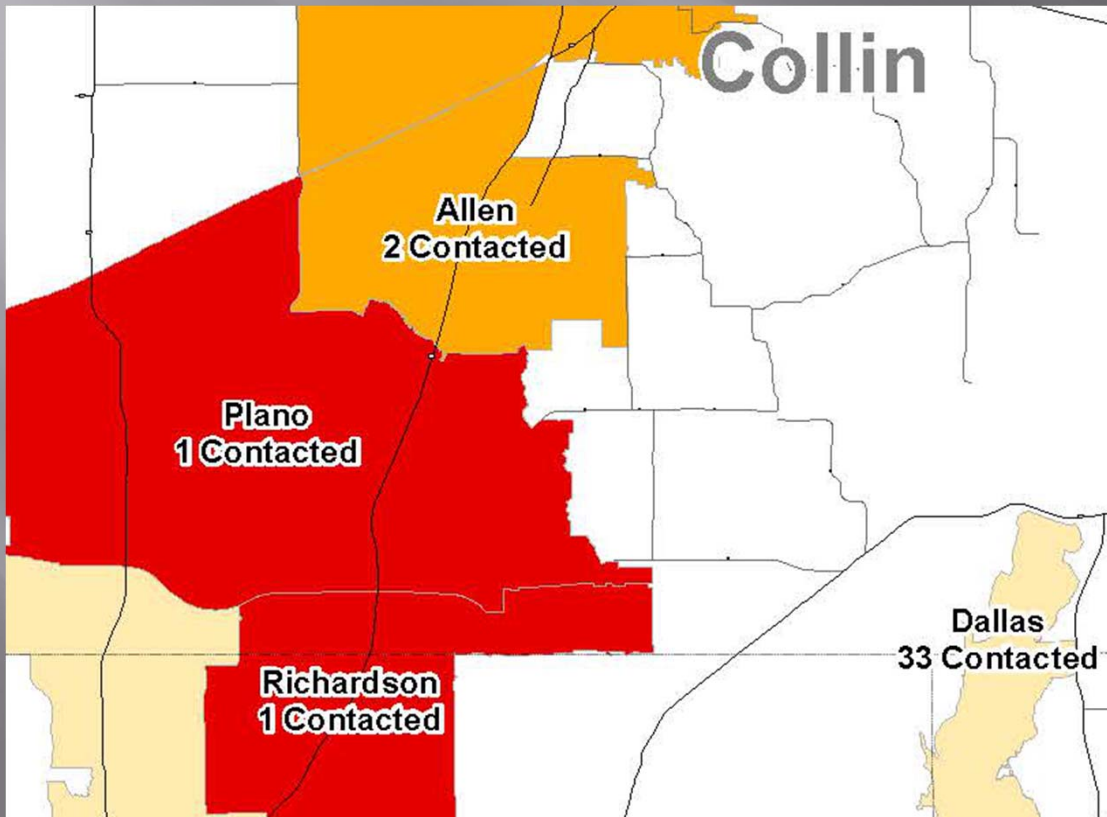
# Operations Center

- ▣ The Disaster District 4 Garland EOC



# Map Products

- ▣ Visual count of initial community contacts per city





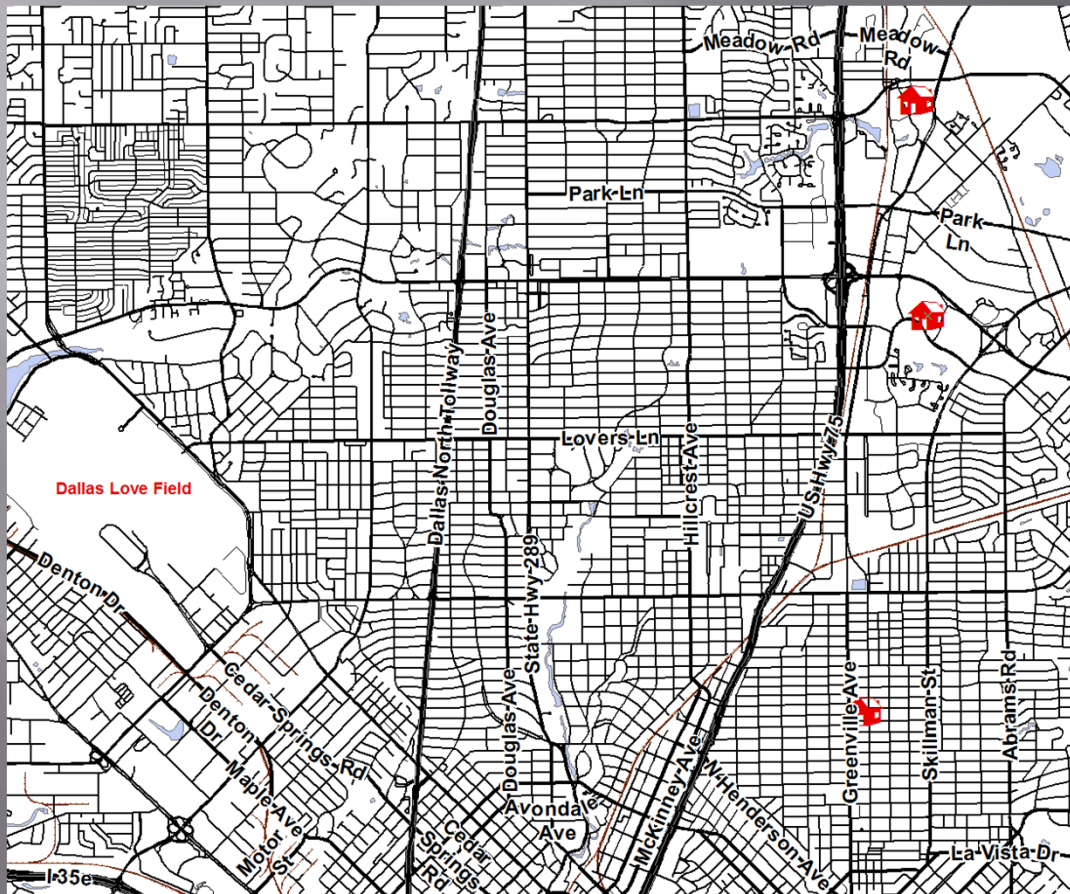
# Map Products

- ▣ Location of Residence



# Map Products

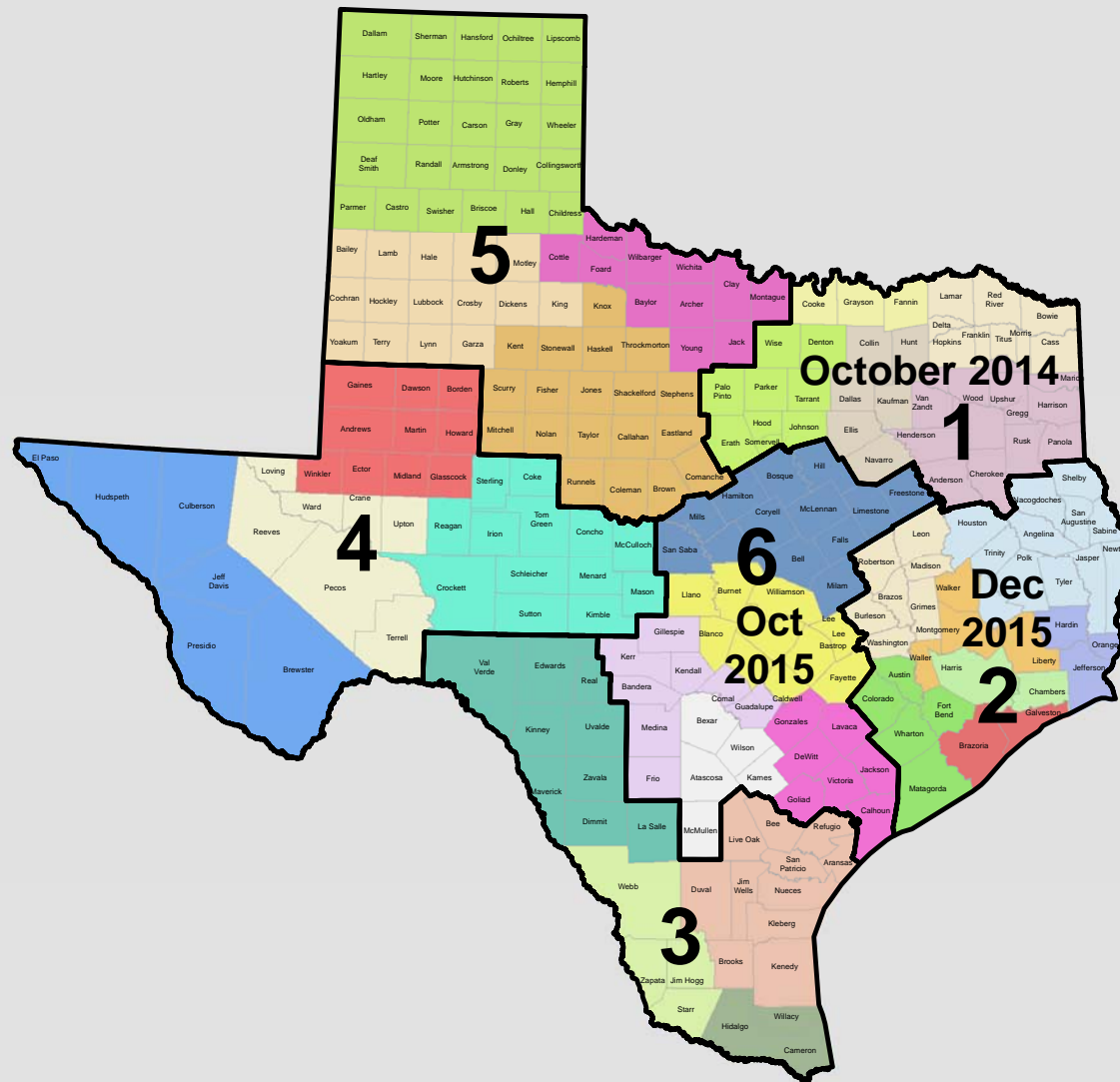
- ▣ Haz-Mat and Patient Routing (And Bentley)



# Texas EGRT in the Future

- ▣ We are forming as a Not-For-Profit corporation
- ▣ Over the summer we'll be making plans for expansion into Region 2 (Houston/Galveston/East Texas Area) and Region 6 (Austin/San Antonio Area)
- ▣ Each region will have its own organizing board to manage training, membership, and responses.
- ▣ The Texas Division of Emergency Management is helping us make inroads with the emergency management world so that we become part of the state's response resources



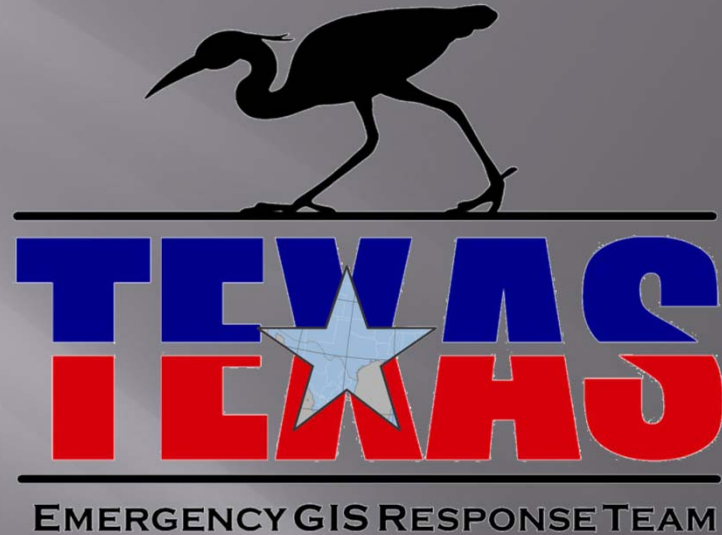


# Texas EGRT

We are breaking new ground with this grassroots concept of GIS for emergency response.







[www.TexasEGRT.org](http://www.TexasEGRT.org)

1-844-TexEGRT

David Allen

[Director@TexasEGRT.ORG](mailto:Director@TexasEGRT.ORG)

817-371-9167