



26th Annual Conference

South Central Arc User Group

April 18 - 22, 2016

Corpus Christi, Texas



Understanding our world.



ArcGIS Online **Mix and mash.**

You can add greater depth and meaning to your work by layering on data drawn from maps built and published by other ArcGISSM Online subscribers.

Welcome to the new frontier in geographic information systems.

30-day free trial: esri.com/agol

TABLE OF CONTENTS

Presidential Address	1
SCAUG Officers	2
Training Classes & Workshops	3
A Message from “TUG” the Arcadillo	
Plenary Speaker	
Contributor Recognitions	
Corpus Christi Storymap	
Award Winners	
Save the Date	
General Schedule Wednesday. April 20	
General Schedule Thursday. April 21	
General Schedule Friday. April 22	
Hands on Learning Lab	
Esri Technical Session Abstracts	
Exhibitor Showcase Abstracts	
User Presentation Abstracts	
Map Gallery Abstracts	
Exhibitor Biographies	
GISP Checklist	57
Map Ballot	
Exhibitor Hall & Meeting Space	Inside Back Cover

PRESIDENTIAL ADDRESS

On behalf of the 2015-16 Regional SCAUG Board I would like to welcome you to the wonderful Texas Gulf Coastal City of Corpus Christi for our 26th Annual Regional SCAUG Conference. We realize that time is one of the most valuable resources you have to offer and we genuinely thank you for choosing to spend it with us. It is our sincere hope that during this week you will enjoy the salt air, excellent content, and valuable time spent enriching your personal GIS skill set.

As the SCAUG region has a diversity throughout the unique eco-regions we all enjoy experiencing we have an equally unique cross section of professionally diverse resources within our membership. GIS is the common operational picture that truly knows no professional boundaries. That common GIS thread has brought our diversity together this week out of a desire to learn from the leaders in our industry as well as from our experienced peers. We strive every year to provide each of you the solid conference content you have come to expect from SCAUG along with incorporating timely new content. Every year's challenges are different and we want each conference to reflect the new climate we exist within. In choosing a unique conference location we all have a touch of a geographer at heart in us and want to see the diversity that the local region affords. This year we have a newly formed Coastal Bend GIS User Group helping foster the local GIS diversity which we sincerely hope you experience throughout the week.

SCAUG recognizes the increasing need for an individual to further their GIS knowledge and professional development through training and certification. These are the driving forces behind us continuing to provide access to the full suite of online GIS training for all members as well as onsite training as requested. In an effort to help individuals that would like to acquire and maintain their GISP SCAUG has pre-approved activity checklists for this conference as well as a number of other SCAUG hosted events throughout the year. A new development this year is the additional partnership with GIS Certification Institute. Every new GISP recipient, upon completing their new certification, will receive an offer for a one year complimentary SCAUG membership included in their GISP certification packet.

Whether this is your first SCAUG conference or you are a seasoned veteran to the SCAUG membership we welcome you to the 26th Annual Regional SCAUG Conference. Be safe, learn a lot, and enjoy your time with SCAUG in (*hopefully*) sunny Corpus Christi, Texas this week.

Charles E. Brady III

SCAUG OFFICERS

President: Charles Brady III, GISP

City of Ardmore, Oklahoma

Vice President: Shellie Willoughby, GISP

Oklahoma Office of Geographic Information, Oklahoma City, Oklahoma

Treasurer: James Allen

Carter County, Ardmore, Oklahoma

Secretary: Anne Mackey, GISP

Tarrant County Transportation, Fort Worth, Texas

Conference Coordinator: Lydia Saucedo, GISP

CPS Energy, San Antonio, Texas

Conference Coordinator Elect: Betsi Chatham

City of Fort Worth, Texas

North Texas Representative: Dean Carter

Abilene Metropolitan Planning Organization, Abilene, Texas

South Texas Representative: Leslie Morgan Ph.D.

GISNuts, San Antonio, Texas

Louisiana Representative: Xingwen Chen Ph.D.

ABCD GIS Mapping, LLC, Shreveport, Louisiana

Mississippi Representative: Scott Trapolino, GISP

DeSoto County, Hernando, Mississippi

Oklahoma Representative: Will Gustafson, GISP

Meshek & Associates, PLC, Tulsa, Oklahoma

Esri Representative: Karen Lizcano

Esri - San Antonio, Texas

Mascot: TUG

South Central United States

TRAINING CLASSES

MONDAY, APRIL 18		
CLASS	ROOM	TIME
Introduction to ArcGIS Pro for GIS Professionals	Aransas	8am - 5pm
Image Analysis with ArcGIS	Matagorda	8am - 5pm
Programming ArcGIS with Python	Copano	8am - 5pm
Getting Answers & Solving Problems - An Intermediate Lesson in Spatial Analysis	Laguna Madre	8am - 5pm

TUESDAY, APRIL 19		
CLASS	ROOM	TIME
Introduction to ArcGIS Pro for GIS Professionals	Aransas	8am - 5pm
Image Analysis with ArcGIS	Matagorda	8am - 5pm
Programming ArcGIS with Python	Copano	8am - 5pm
Editing Data Using ArcGIS for Desktop	Laguna Madre	8am - 5pm

TRAINING WORKSHOPS

FRIDAY, APRIL 22		
CLASS	ROOM	TIME
ArcGIS Tips & Tricks	Aransas	8am - 12pm
Editing & Maintaining Parcels with ArcMap	Copano	8am - 12pm
TxEgrr Training	Laguna Madre	8am - 2pm

GO FURTHER.



NewEdge
SERVICES, LLC

GIS Services

The employees at **NewEdge** are experts in the ESRI product line as well as other related applications. We have years of experience with everything from GIS data creation and analysis to database design, implementation, and management (Oracle, SQL, ArcSDE) to full scale web and mobile deployments.

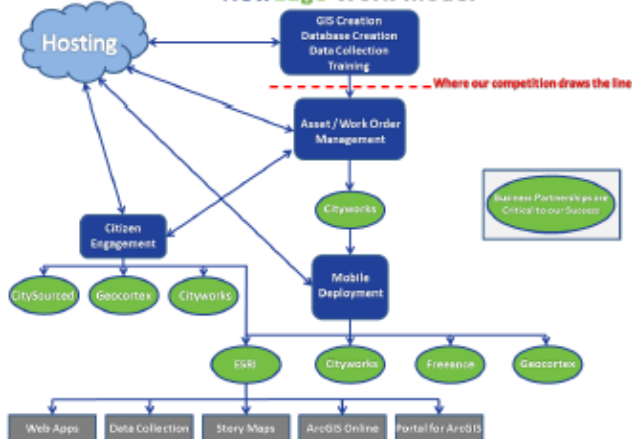
Asset / Work Management

The **NewEdge** team has successfully implemented Asset / Work Management systems for multiple clients and disciplines throughout the Country. The team has experience in working with various types of data, software, and technologies critical for a successful project.

Cloud Hosting

NewEdge offers clients a new way to do business by giving them access to their GIS and/or Asset / Work Management systems in an online environment accessible 24/7. We manage the hardware, maintenance, and management of the systems for an uncomplicated, affordable solution.

NewEdge Work Model



A MESSAGE FROM “TUG” THE ARCADILLO

PLENARY SPEAKER



Bern Szukalski
Environmental Systems Research Institute (Esri)

Bern Szukalski has a degree in Biology and Chemistry, and a background in both environmental consulting and biomedical research. A love of maps eventually led him to Esri in 1986 where he began his geospatial career as an applications specialist working on the Peacekeeper Rail Garrison and CIA World DataBank projects. Over the past 30 years at Esri he has held a variety of positions and served in many different roles, covering a broad spectrum of GIS implementation and software development projects. Bern is currently a product strategist and technical evangelist, focusing on ways to broaden access to geographic information and GIS capabilities.

Wednesday, April 20
10:30am – 11:30am
Nueces Ballroom

CONTRIBUTOR RECOGNITIONS

Conference Guide, Training Computer Labs & Projectors

Lower Rio Grande Valley Development Council 9-1-1



Projectors

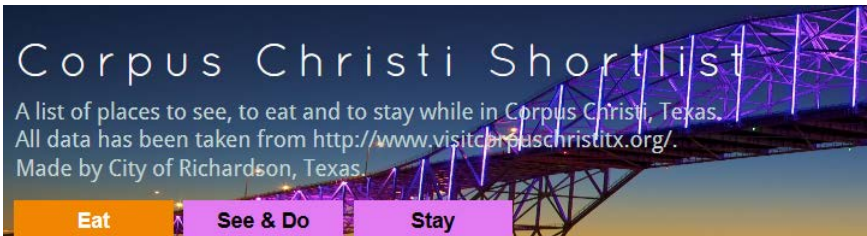
City of Corpus Christi



CORPUS CHRISTI STORYMAP

A big THANK YOU to Heather Scroggins, GIS Technician from the City of Richardson, for creating a storymap showcasing the local area of our conference. Corpus Christi Shortlist is a great resource to find places to eat, play, and visit. Check it out!

<https://maps.cor.gov/GIS/CorpusChristiShortlist/index.html>



You Can Depend On Cityworks

The GIS-centric solution more organizations choose
for maintaining smart, safe, and resilient communities.

BECAUSE YOUR WORLD DEPENDS ON YOU



For more information, visit www.cityworks.com



www.cityworks.com | 801.523.2751

AWARD WINNERS

Founders Award

Matthew Wormus & the Oklahoma Department of Environmental Quality GIS Subcommittee, Department of Environmental Quality



Thumbs Up Award

Pamela Jurney, Cross Timbers Consulting, Inc.



Regional Collaborative Scholarship Awards

Francesco Zignol, Texas State University

Joe Porter, Texas State University



Memorial Scholarship Award

John Fell , University of Texas at Dallas



BOOK YOUR PROJECT WITH

AERIAL SERVICES!

Contact Chuck Boyer

281-733-1992

We believe **our solutions** will work for **you!**

➤ **What We Can Do For You**

We provide a full line of geospatial solutions. From the acquisition of Aerial Imagery and LIDAR data, to ground control survey and final mapping products, ASI delivers your needed solutions.

➤ **Accuracy. Speed. Innovation.**

We make no compromises to the accuracy necessary for your project; we produce data with a rapid turnaround time; and we keep up with the latest technology to ensure we exceed your project expectations.



SAVE THE DATE

SCAUG Mixer at the Esri User Conference

San Diego, California

June 28, 2016 | 5:30pm – 7:00pm



Oklahoma SCAUG Conference

Oklahoma City, Oklahoma

September 20, 2016

Texas GIS Forum

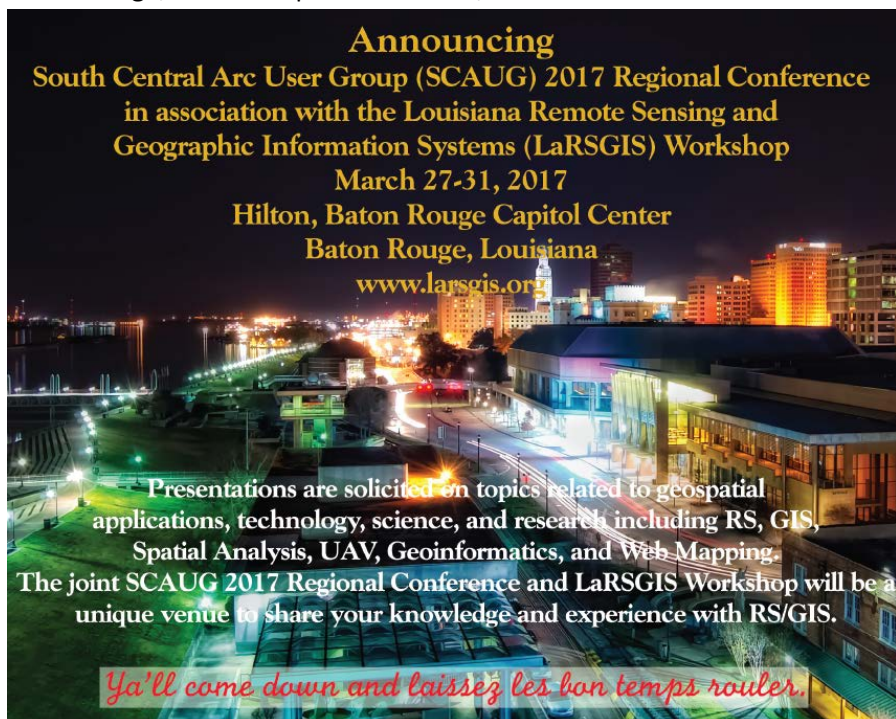
Austin, Texas

October 24 – 27, 2016



Regional SCAUG Conference

Baton Rouge, Louisiana | March 27 - 31, 2017

A nighttime photograph of a cityscape, likely Baton Rouge, Louisiana, with illuminated buildings and streets. The image serves as a background for the conference announcement text.

Announcing
South Central Arc User Group (SCAUG) 2017 Regional Conference
in association with the Louisiana Remote Sensing and
Geographic Information Systems (LaRSGIS) Workshop
March 27-31, 2017
Hilton, Baton Rouge Capitol Center
Baton Rouge, Louisiana
www.larsgis.org

Presentations are solicited on topics related to geospatial applications, technology, science, and research including RS, GIS, Spatial Analysis, UAV, Geoinformatics, and Web Mapping. The joint SCAUG 2017 Regional Conference and LaRSGIS Workshop will be a unique venue to share your knowledge and experience with RS/GIS.

Ya'll come down and laissez les bon temps rouler.

GENERAL SCHEDULE WEDNESDAY, APRIL 20

REGISTRATION 7:00am - 5:00pm
Pre-function 3rd Floor

OPENING BREAKFAST 8:00am – 10:30am
Nueces Ballroom
Sponsored by Western Data Systems



BERN SZUKALSKI PLENARY 10:30am - 11:30am
Nueces Ballroom

LUNCH ON YOUR OWN 11:30am - 1:30pm

MAP GALLERY POSTERS DUE 2:00pm
Registration Pre-function 3rd Floor

Session Track I **Esri Technical Sessions 1:30pm - 2:30pm**

Copano	Laguna Madre	Matagorda
Get Out! Karen Lizcano & Pam Kersh	Land Records Solutions in a Tech Savvy World Dan Stone	Tell Your Story Bern Szukalski

Esri Technical Sessions II **2:45pm - 3:45pm**

Copano	Laguna Madre	Matagorda
Are You Ready for THE Flood? Veronica Schindler & Keith Kite	Successful Engagement with What's New in ArcGIS Online Pam Kersh	Getting to Know ArcGIS Pro Miriam Schmidts

Session Track III
Esri Technical Session 4:00pm - 5:00pm

Copano	Laguna Madre	Matagorda
Front and Center, Making Great Maps in a Digital Age Karen Lizcano	Does your Data Have Harmony Dan Stone	Getting to Know ArcGIS Pro Miriam Schmidts

EXHIBITOR HALL RECEPTION 5:00pm - 7:00pm
Nueces Ballroom

The official opening of the Exhibitor Hall welcomes everyone to meet exhibitors in a fun social atmosphere. Furthermore, it gives time to make note of what exhibitors they want to formally visit the next day. Don't forget to acquire Exhibitor Door Prize Tickets from our exhibitors in hopes to win something during the door prize drawings at 3:15pm Thursday, April 21. Must be present to WIN!!!



BIS
CONSULTING

An ESRI
Business
Partner

(800)247-9045

A full service GIS products & services provider

- ✓ Enterprise GIS Evaluations / Needs Assessments
- ✓ ESRI 9.x/10.x Upgrades or Migrations
- ✓ ESRI ArcGIS Server Design, Implementation & Configuration
- ✓ Windows & SQL Server Setup and Administration
- ✓ Hosted SDE & Map Services - Web Mapping Applications
- ✓ Spatial Data Management / Administration / Integration
- ✓ Infrastructure - Hardware - Software - Contract IT Services
- ✓ ArcGIS Online Setup & Administration

bisconsultants.com
kweismuller@bisconsultants.com

Geocortex®

Accomplish *even more* with your
 investment in the ArcGIS® platform.

GENERAL SCHEDULE THURSDAY, APRIL 21

REGISTRATION 7:30am - 4:00pm
Pre-function 3rd Floor

CONTINENTAL BREAKFAST 8:00am – 9:00am
Nueces Ballroom
Sponsored by Esri



EXHIBITOR HALL & MAP GALLERY 8:00am - 4:00pm
Nueces Ballroom

Please tear out Map Gallery Ballot in the back of conference guide, cast your vote for your favorite map, and submit ballots at registration desk no later than 2:30pm on Thursday, April 21

ESRI HANDS ON LEARNING LAB 8:00am - 5:00pm
Aransas

Come get FREE hands-on Esri training!!! 22 different lessons available which are 45-minutes and self-guided. Esri Solution Engineers available for assistance.

Lesson Listing on page ??? Sign-up in Aransas ~ First Come, First Served

SESSION TRACK I **Exhibitor Showcases 9:00am - 9:30am**

Copano	Laguna Madre	Matagorda
Leveraging a GIS-Centric Asset Management System After a Disaster Aaron Kreag	Creative GIS Solutions for Local Government Andrew Harrison	Insight - Advances in GIS Technology Scott Stafford-Veale

SESSION TRACK II
Exhibitor Showcases 9:45am -10:15am

Copano	Laguna Madre	Matagorda
Understanding the NewEdge Cloud & Unique ID Tool Gary Parker & Robbie Schermerhorn		Proven Aerial Remote Sensing Solutions for Efficient Pipeline Planning & Integrity Management Chuck Boyer

EXHIBITOR VISIT TIME 10:15am – 10:30am
Nueces Ballroom

SESSION TRACK III
User Presentations 10:30am - 11:30am

Copano	Laguna Madre	Matagorda
Where Can I Build That? Mapping Entitlements Across McKinney Neil Rose & Alexis Green Mobilize Your Workforce with ArcGIS Online Ramon Campos	Be Flood SAF(ER) – Situational Awareness For Emergency Response – A River Flooding Extent Map Viewer Jared Allen Improving Flash Flood Response with an ArcGIS Online Road Closure App Greg Brown & Corey Baker	3D Interior Space Scanning On A Budget J. Scott Sires



SESSION TRACK IV User Presentations 1:00pm - 2:00pm		
Copano	Laguna Madre	Matagorda
Engineering & Mapping a Major Water Pipeline Michael A. Garza Designing a GIS for Facilities Management & Distributing Through Story Maps Tony Guzman & Brad Daugherty	GIS & Next Generation 9-1-1: What It All Means Amy Rose & Kasey Cox	The 3D Elevation Program (3DEP) Claire DeV Vaughan

SESSION TRACK V User Presentations 2:15pm - 3:15pm		
Copano	Laguna Madre	Matagorda
State of the GISCI & the GISP Richard Smith	GIS Products and Services at the National Weather Service in Corpus Christi, Texas Michael Buchanan GIS in the World of a 9-1-1 COG Sergio Castro	Batch Groprocessing using Python to Manage Data Efficiently Xingwen Chen P2 Energy Solutions Alyssa Geyer Erin Ukestad, & Sharmila Partab

EXHIBITOR DOOR PRIZES & MAP GALLERY WINNERS 3:15pm – 4:00pm
Nueces Ballroom

Last chance to connect with exhibitors!!! The Map Gallery Winner will be announced along with Exhibitor Door Prize Winners being drawn. **MUST BE PRESENT** to win Exhibitor Door Prizes.

NEWEDGE SERVICES HAPPY HOUR 5:00pm – 8:00pm
Executive Surf Club



NewEdge Services is hosting a Happy Hour providing drinks and appetizers at the locally famous Executive Surf Club at 306 North Chaparral just a few blocks away.

GENERAL SCHEDULE FRIDAY, APRIL 22

TRAINING WORKSHOP	ROOM	TIME
ArcGIS Tips & Tricks	Aransas	8am - 12pm
Editing & Maintaining Parcels with ArcMap	Copano	8am - 12pm
TxEgrr Training	Laguna Madre	8am - 2pm

SUBCHAPTER & SPECIAL INTEREST GROUP MEETINGS	ROOM	TIME
CBGIS User Group Meeting	Matagorda	8:30am - 10am
9-1-1 South Region Planning Group Meeting	Matagorda	10am - 12pm

ESRI TECHNICAL SESSION ABSTRACTS

Wednesday, April 20

SESSION TRACK I 1:30pm – 2:30pm

Get Out!

Copano

Karen Lizcano & Pam Kersh

A variety of mapping applications are available to help you improve field operations and make more informed business decisions. Esri continues to release, update and modernize the options available to get your content out into the field and on portable devices. During this session we will look at some of the newest options including Workforce, Navigator, Survey123 and Collector. By utilizing these solutions you can get out, get work done and improve operation efficiency, making you the mobile data hero!

Land Records Solutions in a Tech Savvy World

Laguna Madre

Dan Stone

What can The Land Records Solutions do for YOU?

- manage an accurate inventory of real property
- see details of who owns the land
- analyze land value and the associated improvements
- help maximize tax property revenue

All of this is available in supported, configurable templates! Come and see from one of our Land Records Experts how these maps can be used by everyone, from appraisers in the field, to office staff, that provide quick access to essential information, to the public, who want easy access in a modern format. By leveraging these solutions you are empowering your constituents to quickly and easily get the information they are seeking.

Everyone has a story. What's yours? Esri Story Maps let you combine authoritative maps with narrative text, images, and multimedia content. They make it easy to harness the power of maps and geography to tell your story. During this session one of Esri's story map experts will highlight some of our newest story maps and show you how to easily configure and deploy your story in a way that can engage your community, communicate with constituents, inform decision makers, and fire up your supporters.

SESSION TRACK III 2:45pm – 3:45pm**Are You Ready for THE Flood?****Copano***Veronica Schindler & Keith Kite*

Make sure your organization has the capabilities, resources, and tools it needs to weather the storm and safeguard your community. Esri is ready to help you before, during, and after major rain events with Solutions for Flood, a specially designed solution to help you face record-setting rains. Solutions for Flood includes everything your organization needs to defend your community and prepare for an emergency. You can inspire public confidence in your organization with public-facing maps about everything from flood plans and mitigation efforts to road closures and evacuation shelters.

Successful Engagement with What's New in ArcGIS Online*Pam Kersh***Laguna Madre**

It's time to refresh your browser, as Bern Szukalski would say! The latest update to ArcGIS Online includes new options for creating 3D web apps, social logins for public accounts, as well as enhancements to smart mapping, and administering your ArcGIS Online subscription. This session will cover the new updates available in ArcGIS Online, as well as a strategy for employing Web GIS in your organization, and how ArcGIS Online fits into that strategy.

Miriam Schmidts

ArcGIS Pro is the essential application for creating and working with spatial data on your desktop. It provides tools to visualize, analyze, compile, and share your data, in both 2D and 3D environments. The new ArcGIS Pro application has been designed as a premiere application for visualizing, editing, and performing analysis using local content, or content from your ArcGIS Online or Portal for ArcGIS organization. This session will teach the fundamental concepts of ArcGIS Pro and give you a quick start on key workflows such as mapping and visualization, GIS data editing, and geoprocessing.

SESSION TRACK III 4:00pm – 5:00pm**Front and Center, Making Great Maps in a Digital Age****Copano***Karen Lizcano*

You collect data, ensure accuracy and perform analysis. Now it's time to shine by effectively communicating your message through modern and meaningful digital media. During this session we will look at different ways to create and share maps leveraging ArcGIS Online. We'll discuss web maps, web mapping applications and the WebApp Builder. We will also look at some of the new features that you can include in your modern mapping solutions.

Does Your Data Have Harmony?**Laguna Madre***Dan Stone*

ArcGIS for Local Government is based on a harmonized information model of GIS datasets, web services, and maps that we commonly refer to as the Local Government Information Model (LGIM). The LGIM's design reflects specific application requirements and the cartographic design elements necessary to produce rich, multiscale basemaps and operational layers. This session will discuss the benefits of the LGIM, and the tools and best practices for implementing the LGIM, maps, and apps.

Miriam Schmidts

ArcGIS Pro is the essential application for creating and working with spatial data on your desktop. It provides tools to visualize, analyze, compile, and share your data, in both 2D and 3D environments. The new ArcGIS Pro application has been designed as a premiere application for visualizing, editing, and performing analysis using local content, or content from your ArcGIS Online or Portal for ArcGIS organization. This session will teach the fundamental concepts of ArcGIS Pro and give you a quick start on key workflows such as mapping and visualization, GIS data editing, and geoprocessing.

A promotional banner for Beacon™. The background is a light blue map with various locations marked. In the center, the word "Beacon" is written in a large, dark red serif font, with a trademark symbol (TM) to its upper right. To the left of the word is a dark red circle containing a white icon of a building with a dome and signal waves. Below the word, the text "Have You Seen What's New?" is written in a large, bold, white sans-serif font. To the right of the text, there is a list of four bullet points: "GIS Professionals", "GIS Products", "GIS Services", and "GIS Support and Training". Below the list, there is a small icon of a curved arrow pointing right, with the word "Schneider" written below it. In the bottom left corner, there is a dark red rectangular box containing the text "See our webinar" and the URL "SchneiderCorp.com/BeaconWebinar" in white. In the center of the banner, there are images of a laptop, a tablet, and a smartphone, all displaying maps or GIS data.

BeaconTM

**Have You Seen
What's New?**

- GIS Professionals
- GIS Products
- GIS Services
- GIS Support and Training

See our webinar
SchneiderCorp.com/BeaconWebinar

Schneider



- when it has to be **right**



Leica Geosystems provides powerful asset management solutions that are easy to use. From inexpensive hand held data collection devices to fully configurable and completely accessible enterprise class GIS/Asset Management solutions. We offer solutions with easy data upload/download capabilities allowing field technicians to complete entire projects remotely without ever stepping foot in the office.

Please contact me to discuss your requirements:

Colin M.H.A. Fletcher
Geomatic Resources, LLC
2914 West Story Road
Irving, TX 75038
817.631.3207
cf@geotx.com
www.geotx.com



RazorTek

Sharpen Your Technology

Dan Rodriguez

Satellite and Aerial Mapping

Services

- Image processing
- Data Conversion
- Data development
- Web programming
- Data extraction
- MrSid compression
- MrSid reprojection
- MrSid Mosaic
- Address Geocoding
- GPS processing

Products

- Aerial Photography
- Satellite Imagery
- LiDAR
- LizardTech (MrSID)
- GeoExpress
- ESRI products
- ArcGIS 10.2.1
- Extensions
- Terrago software
- Terrago Edge

www.razor-tek.com danr@razor-tek.com

(901)-922-5448

Training for the GIS Professional

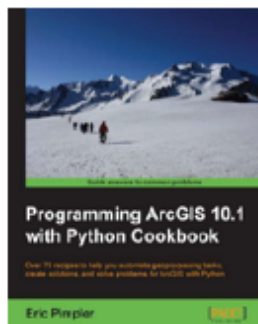
Since 2005



<http://geospatialtraining.com>

Our Most Popular Courses

- Programming ArcGIS with Python Workshop
- Building Custom ArcGIS Server Applications with JavaScript
- Introduction to ArcGIS Online
- Fundamentals of Google Earth Pro
 - Open Source GIS Bootcamp
- Many More!



*Traditional Classroom, Live-Online, Self-Paced Online
Free Recorded Webinars <http://vimeo.com/geospatialtraining>*

EXHIBITOR SHOWCASE ABSTRACTS

Thursday, April 21

SESSION TRACK I 9:00am - 9:30am

Leveraging a GIS-Centric Asset Management System After a Disaster

*Aaron Kreag, GISP, Regional Sales Manager
Cityworks*

Copano

In a post disaster scenario FEMA will mobilize resources and free up funding for a rescue or recovery effort. Organizations have a responsibility to properly track and report on fiscal activity and resource utilization as they progress and seek funding or reimbursement. This presentation will take a brief look at the applicability of the Cityworks & ESRI platforms and how they may be leveraged by local government in a post disaster environment.

Creative GIS Solutions for Local Government

Laguna Madre

*Andrew Harrison, GISP, Director of Business Development
The Schneider Corporation*

Our presentation covers how communities around the country have been providing creative solutions to today's problems using GIS. This presentation is composed of case studies on how other communities have solved their time and budget problems with innovative GIS ideas; by using best practices for inventory of assets, utilizing damage, identifying and tackling large scale GIS, implementing cemetery mapping, and the simplicity of managing online permitting. The goal of this presentation will be to share many different ideas for GIS use and for you to leave the session with new ideas that you can try yourself.

Everybody works better when organizations have control over their systems and can manage their performance. Better yet, spend less time monitoring your sites and let your system tell you when important events are happening. This presentation will introduce and demonstrate how organizations can ensure the smooth running of their ArcGIS Server, AGOL, Portal (and Geocortex) infrastructure by employing new technology that alerts managers to potential issues, and raises alarms if needed, in real time. Immediate notification means you can address problems as soon as they arise, minimizing downtime and ensuring performance for end-users.

SESSIONTRACK II 9:45am – 10:45am**Understanding the NewEdge Cloud and Unique ID Tool****Copano***Gary Parker, System Administrator, NewEdge Services, LLC**Robbie Schermerhorn, GIS Specialist, NewEdge Services, LLC*

NewEdge Services, LLC has been at the forefront of cloud hosting services within the GIS industry with our longest standing cloud client being online for almost 4 years. NewEdge offers our clients multiple options for hosting GIS and/or Cityworks and other related applications in the Amazon cloud. This vendor showcase will demonstrate the technical aspects of the NewEdge Cloud environment as well as address some of the common misunderstandings of a cloud hosted solution. In addition, NewEdge has developed an ID tool that allows users to customize unique IDs within their geodatabase to meet client specific needs. The tool automatically assigns IDs that are unique within the entire database as GIS editing occurs without the need for a customized tool installed on each editor endpoint. During the showcase, we will demonstrate the functionality of the tool and discuss the multiple deployment options available.

Proven Aerial Remote Sensing Solutions for Efficient Pipeline Planning & Integrity Management

Matagorda

*Chuck Boyer, Director of Geospatial Solutions
Aerial Services, Inc.*

LiDAR and aerial imagery are the safest and most economical ways to collect and produce geospatial mapping for the Oil and Gas industry. I will show, from past experience, how you can collect data for a oil or gas pipeline and save time and money on the front end of a project. I will also show how millions of dollars can be save on the back end of projects because you collect millions of points during a project and can use them when you need them. Lidar is also able to show High Consequence Areas, avoiding catastrophic event and saving lives.

eGIS Associates, Inc. is focused on providing efficient and cost effective Geospatial Solutions that meet the growing needs of public and private sector enterprises. Our mission is to help you consume the "Power of Place" with current technology standards and [Applied Spatial Intelligence](#)®.

eGIS offers a wealth of professional products and services including:

- **Enterprise GIS/IT Implementation**
 - Esri
 - Hexagon
 - Microsoft
- **Geodatabase Design, Implementation & Conversion**
- **Desktop, Web & Mobile Application Development**
- **Field-to-Office Automation**
 - Leica
 - Esri
 - Trimble
- **Business Systems Integration**
- **GIS/IT Training and Support**
 - Esri
 - Hexagon ERDAS Imagine & Apollo
 - Leica GPS/GNSS Solutions
 - Microsoft

eGIS is committed to customer satisfaction – [Relationships Matter](#). Whether you need advice on your project or are looking for a relevant product or just have a technical question, we can help. Visit our website at:

www.egisassociates.com



esri

Partner Network
Silver

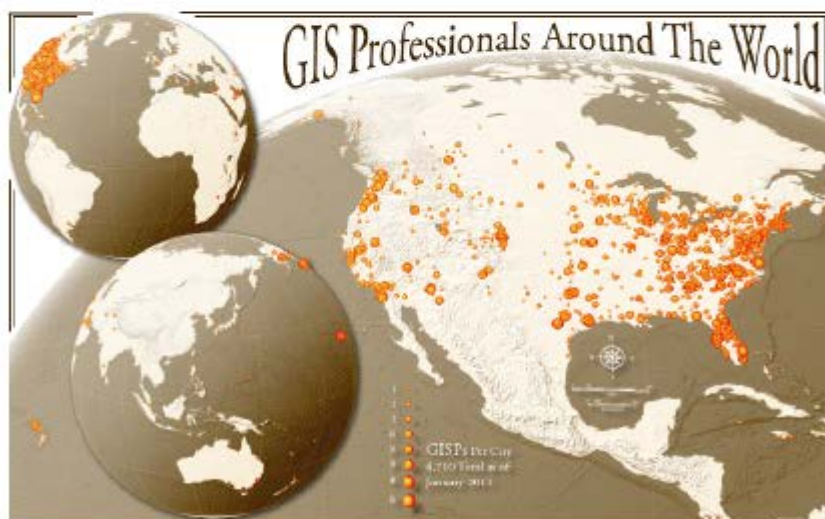


HEXAGON
GEOSPATIAL
Technology Partner



**Are You
Contemplating
Your
Geospatial
Future?**

**A GISP Professional
Certification Can Help!**



Visit www.giscf.org to find out more.

USER PRESENTATION ABSTRACTS

Thursday, April 21st

SESSION TRACK III 10:30am - 11:30am

Where Can I Build That? Mapping Entitlements Across McKinney

Neil Rose, GIS Planner & Alexis Green, GIS Analyst

Copano

City of McKinney, TX

The City of McKinney regulates land use entitlements through zoning districts. Each district defines the allowable land uses, which are outlined in a Schedule of Uses. This Schedule of Uses includes over 250 unique land uses. Given the variety of land uses that could be allowed in a single zoning district, plus the City's heavy reliance on Planned Development Districts (districts that allow land use flexibility), geospatially locating allowable land uses was unfeasible. An interactive web application was developed in collaboration with Planning, GIS, and IT to help staff and end users determine where certain land uses can be located based on zoning. Self-service generation of spatial information allows for a reduction of research time in response to customer inquiries and has improved staff's ability to analyze land use data. The web app features a geoprocessing service built with Model Builder & python scripting that is consumed via Web AppBuilder.

Mobilize Your Workforce with ArcGIS Online

Copano

Ramon Campos, GISP, GIS Manager

Tarrant County Information Technology, Tarrant County Business Application Development & Support

Leveraging ArcGIS Online and Collector for ArcGIS, your workforce can be in the field collecting and updating data in minutes. See how Tarrant County is using ArcGIS for Server, ArcGIS Online, and Collector to improve efficiency and accuracy of its sign field crews in the Transportation Department.

Be Flood SAF(ER) – Situational Awareness For Emergency Response – A River Flooding Extent Map Viewer

Laguna Madre

Jared Allen, Senior Meteorologist, GIS Focal Point

NOAA/National Weather Service - Austin/San Antonio, TX

Situational awareness of river flooding and its time evolution through the use of flood extent mapping is critical for emergency management resource allocation, decision making, and overall public alertness. To increase decisive information for emergency responders, the Austin/San Antonio, TX National Weather Service (NWS) office has developed a prototype ArcGIS Online (AGOL) web mapping application called Flood SAF(ER). This application displays current radar, weather warnings, observed, and forecast river heights, plus their respective hydrographs. More importantly, this viewer links to a basic and advanced AGOL web map that spatially depicts modeled river flood extents for critical impact categories (minor – record NWS stages). With knowledge of the critical infrastructure and neighborhoods at risk during a river flooding episode, decision makers can use this application and its respective GIS layers to develop a timeline for decisive action planning and city/county coordination.

Improving Flash Flood Response with an ArcGIS Online

Road Closure App

Laguna Madre

Greg Brown, GIS Dept, City of New Braunfels, TX

Corey Baker, Account Manager, GISinc

The City of New Braunfels, TX uses web and mobile applications to respond in real time to recent flood events that create dangerous road crossings.

3D Interior Space Scanning On A Budget

Matagorda

*J. Scott Sires, Geospatial Technology Program Professor & Coordinator
Brookhaven College Geospatial Technology*

This session demonstrates and discusses low-cost, emerging technologies applied to create high-density 3D point cloud data sets.

The method requires a 64-bit tablet, a \$500 scanning sensor and optional items that are easy to utilize. Brookhaven College Geospatial students invested a Fall 2015 semester course researching this methodology. Scans require less than 30 minutes, are then processed into a point cloud and spatially adjusted to real world coordinates. The developed SOP will be provided.

SESSIONTRACK IV 1:00pm – 2:00pm

Engineering and Mapping a Major Water Pipeline

Copano

Michael A. Garza, GISP

Pape-Dawson Engineers

This project consists of the design of a major water pipeline that crosses seven counties and roughly 500 parcels to help supplement water to the dwindling Edwards Aquifer water source in Bexar County. Pape-Dawson Engineers created multiple GIS websites, for both desktop and mobile devices, that allowed several agencies to collect data in real-time. This allowed the Project managers, Engineers, Environmentalist, and Board members to view and access GIS websites and dashboards in order to see the status of each parcel and if there were any issues that might interfere in the alignment of the waterline. GIS was the only tool that allowed for the multiple agencies and decision makers to coordinate and collaborate their decisions based on real time data.

Designing a GIS for Facilities Management and Distributing Through Story Maps **Copano**

Tony Guzman, GIS Specialist, Midland Independent School District

Brad Daugherty, President, NewEdge Services, LLC

Midland Independent School District (MISD) has been developing GIS data for facilities using aerial photography and GPS for several years. MISD realized a need for a more robust geodatabase design to meet current needs and to realize future expectations. MISD contracted NewEdge Services, LLC to assist with a database design. The team utilized MISD's existing data, Esri local government template, and Esri facilities data model to develop a comprehensive data model for the District. Procedures were implemented to allow GIS users to access other data sources (ex. CAD floor plans, original construction and as-built plans, bid documents, warranties, contracts, etc.) via the GIS. The GIS information is shared throughout the District's network via an ArcGIS Flex Viewer application as well as through a Story Map. The presentation will review the components of the database design and demonstrate how the web applications are used to access a variety of information.

GIS and Next Generation 9-1-1: What it All Means **Laguna Madre**

Amy Rose, 9-1-1 GIS Analyst II & Kasey Cox, 9-1-1 GIS Technician II

North Central Texas Council of Governments

Next Generation 9-1-1 (NG9-1-1) places GIS at the core of emergency call routing. In the current E9-1-1 system, GIS is primarily used for map display and call plotting. Much of the driving force behind NG9-1-1 is due to advancements in IP based technologies such as smart devices and telematics systems. So what does this all mean and how might it affect you? Visit us for a presentation that will provide:

- A high level overview of the role of GIS in NG9-1-1.
- What NG9-1-1 could mean for local GIS data creators now and in the future.
- Ways you can become involved and keep informed about NG9-1-1 GIS.

The 3D Elevation Program (3DEP)

Matagorda

*Claire DeV Vaughan, National Map Liaison for OK and TX
U.S. Geological Survey*

The 3D Elevation Program (3DEP) is being developed to respond to growing needs for high-quality topographic data and for a wide range of other three-dimensional representations of the Nation's natural and constructed features. The primary goal of 3DEP is to systematically collect enhanced elevation data in the form of high-quality light detection and ranging (lidar) data over the conterminous United States, Hawaii, and the U.S. territories, by the end of 2022. Benefits of such data apply to flood risk management, agriculture, water supply, infrastructure management, and aviation safety. This presentation will describe lidar basics, show examples of lidar usage in various applications, discuss recommendations for the emerging lidar technologies of "Single Photon Counting" and "Geiger Mode", and provide information on 3DEP program status and planning tools.

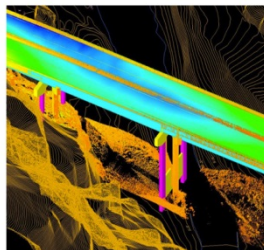
SESSION TRACK V 2:15pm – 3:15pm

State of the GISCI and the GISP

Copano

Richard Smith, Ph.D., GISP, Board Member, GISCI Board of Directors

This presentation will introduce the GIS Certification Institute (GISCI) and provide an overview of the mission, current status, and future of the GISCI. Additionally, the GIS Professional (GISP) certification program's current status and future direction will be introduced and discussed. Lastly, as part of the GISP program discussion, the development, distribution, and maintenance of the GISP examination will be presented.



ACCESSGEOGRAPHIC

IMAGERY - MAPPING - LIDAR - GIS

.....

ACCESS GEOGRAPHIC, LLC TAKES PRIDE IN SERVING COMMUNITIES AND INDUSTRY ACROSS NORTH AMERICA. WHILE EVERY PROJECT IS DIFFERENT, OUR COMMITMENT TO FINDING THE MOST **DIRECT** AND **COST-EFFECTIVE** GEOSPATIAL SOLUTION STAYS THE SAME. WE HONESTLY ENJOY WHAT WE DO, AND YOU'LL SEE IT IN OUR **RESULTS**.

.....

WWW.ACCESSGEOGRAPHIC.COM

(480) 709-2710

GIS Products and Services at the National Weather Service in Corpus Christi, Texas

Laguna Madre

*Michael Buchanan, Science and Operations Officer
National Weather Service Corpus Christi, Texas*

Since 2007, the National Weather Service office located in Corpus Christi, Texas has developed a variety of GIS products and services for their local, regional, and national customers and partners. High resolution PNG graphics, KMZ files, and Web Mapping Services of weather and climate information are routinely created using a multitude of Python scripts. These GIS products and services are used to brief customers and partners on routine and significant weather impacts through a variety of email, web, and social media platforms. The easy-to-understand format of these GIS products and services greatly assists customers and partners in making critical weather-related decisions.

GIS in the World of a 9-1-1 COG

Laguna Madre

Sergio Castro, LRGVDC 9-1-1

Many of us know that GIS is used throughout the world for many different things such as oil and gas, education, environment and science. However, in the world of 9-1-1, GIS has an important significance since we use this technology for many things. One of the main usage of this technology is for saving peoples lives. In this session, you we see how LRGVDC utilizes GIS in mostly every aspect of 9-1-1. You will also understand why we feel that GIS is now the heart and soul of 9-1-1.

Batch Groprocessing using Python to Manage Data Efficiently

Xingwen Chen, President

Matagorda

ABCD GIS Mapping

In the process of mapping oil/gas mineral ownership, we often need to assemble data from different sources, formats, datum, and projections. Data usually come in by counties such as Surface Well Locations & Bottom Holes, and some are state level data, such as landgrid (Texas Original Land Survey). The goal is to process these data sets and save in

a geodatabase, re-define projections, project all data in the same DATUM & projection, query for subset of data, calculate fields, and convert all data layers to sequential list of points with latitude/longitude that are to be used in customized applications. Python and PyScripter are used to program the whole process in a batch mode. Multiple counties of data may be process at once.

P2 Energy Solutions

Matagorda

Alyssa Geyer, Erin Ukestad, Sharmila Partab

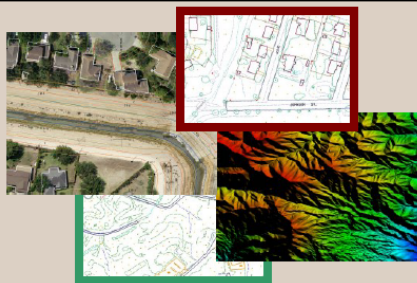
P2 Tobin Data Production Image Service

This presentation will explore the challenges and successes of P2 Energy Solutions' effort to migrate vintage aerial imagery and land grid to a raster-based image service. Because this project results in easier access to raster resources, there has been improvement in the data operations production efforts. A few challenges that have arisen since the implementation of the image service include conversion of various image types and staffing for detail-intensive tasks. P2 Energy Solutions offers a series of Tobin Data packages containing Vintage and Custom Aerial Imagery, Survey, Lease, Ownership, and Well data to upstream oil and gas exploration and production companies since 1928.



Patsy Ingram
President
pingram@unitedgeotech.com

Mike Ramos
Senior Vice President
miramos@unitedgeotech.com



**Specializing in Digital
Photogrammetric Mapping,
Orthophotography and
Geographic Information
Systems (GIS)**

United Geo Technologies LLC
A small woman-owned business
7715 Mainland, Suite 110
San Antonio, Texas 78250
Phone: 210.684.2147
Fax: 210.764-5022
www.unitedgeotech.com

HANDS ON LEARNING LAB

Thursday, April 21 8:00am – 5:00pm

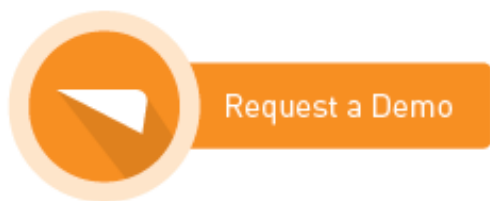
The Hands-on Learning Lab (HOLL) is a training resource provided and developed by Esri Training Services, and is an excellent way to introduce ArcGIS users to a variety of Esri software solutions and training opportunities while learning to use Esri software. The best part is that it is FREE with conference registration!!! Attendees will be able to sign up for lessons during HOLL hours of 8am to 5pm on Thursday, April 21st.

The HOLL consists of a group of laptops with headphones where students can work through lessons at their own pace. A lesson consists of a recorded presentation followed by a hands-on exercise. Each lesson typically takes about 45 to one hour to complete and students can generally come and go as they please. Education Services instructors are on hand to assist users with questions.

LESSONS

1. Getting Started with GIS 1: Understanding the ArcGIS Platform
2. Getting Started with GIS 2: Using ArcMAP to Explore GIS Data
3. Getting to Know ArcGIS Pro
4. Advantages to Storing Your GIS Data in the Geodatabase
5. Creating Presentation Quality Maps in ArcMap
6. Editing GIS Data in ArcMap
7. Multi-user Editing Using Versioning
8. Editing and Maintaining Parcels Stored in a Parcel Fabric
9. Geocoding Street Addresses to Create Map Points
10. Importing and Preparing CAD Data for Use in ArcGIS
11. The Importance of Spatial Reference in Tactical Applications
12. Exploring Health and Epidemic Patterns Using Spatial Statistics Tools
13. Optimizing Transportation Routes Using ArcGIS Network Analyst
14. Modeling Time and Distance Along Networks Using Linear Referencing
15. Working with Geometric Networks to Manage Utilities
16. Interpolating Sample Points to Create Rasters Using Spatial Analyst Tools
17. Geoprocessing GIS Data Using Python
18. Sharing Maps and GIS Content Using ArcGIS Online
19. Understanding Web Services Using ArcGIS for Server
20. Generating Web Applications for the GIS Novice
21. Getting Started with the Community Maps Data Preparation Tools
22. Mapping Excel Data Using Esri Maps for Office

It's time for
something
new.



The Local Government Solution for ArcGIS.

Cartegraph™
The Operations Management System.



TNRIS

Texas Natural Resources Information System

brings you two more chances
to get out of the office.

2016 GEORODEO

< The Annual Texas GeoDeveloper Roundup >

May 20, 2015 * Pickle Center * Austin, TX



TEXAS GIS FORUM

October 24-27, 2016 | Austin, Texas

Stay updated at www.tnris.org

MAP GALLERY ABSTRACTS

A Tornado the Day After Christmas!?!

Bret Fenster, Kendall Holland, Ramona Luster, Gabi Voicu, Khyati Desai and Tim Nolan, Collin County, Texas GIS

“Remember... tornado season in Texas is January 1st – December 31st.” – David Finfrock, Chief Meteorologist, NBC 5 News, Dallas-Ft Worth. If the conditions are right, a tornado can occur at any time. Devastating tornadoes roared through Ellis, Dallas and Collin Counties the day after Christmas. Much of our rescue and recovery efforts were taxed due to the holiday. Collin County GIS staff, in coordination with the Texas Emergency GIS Response Team (TX EGRT) and local authorities, built an ArcGIS Online (AGO) interface to display structures effected by the tornadoes. The AGO site served as a single repository for site pictures, building conditions and the eventual tornado paths. Collin County enlisted the help of Pictometry International to fly and take imagery of the tornado damage. We were able to see before and after images of the structures in the affected areas. This maps shows some of the early data collection effort, the tornado paths and the imagery of the destruction.

Influence of the utopian Reunion Colony settlers in early Dallas, Texas. as evidenced by pattern of historical street names in the present Downtown, Deep Ellum, and Old East Dallas areas.

Albert Dwayne Taylor, City of Dallas, Texas

French philosopher Francois Marie Charles Fourier developed ideas in the early 1800's on how to create a productive, nonrepressive society, free from disorder, chaos and strife, through harmonious collaboration and elimination of tedious or unpleasant work through communal associations. This became popular as a reaction to the French Revolution and Napoleonic era earlier in the century. An early collaborator, Victor Prosper Considerant, defined the idea of a “right to (have) work” as one the main ideas of French Socialists in the 1848 Revolution in France (one of a wave of revolutions in Europe that year), which ended with the defeat of insurrectionists by forces loyal to Louis

Napoleon Bonaparte, followed by repression of his opponents, including Considerant and other followers of utopian Fourierism movement, who were forced into exile in Belgium.

Considerant, with the help of other exiles, began planning the establishment of a colony in North America. With the assistance of advance agent Francois Cantagrel, a site was found in Dallas County in 1952, with the first settlers, perhaps 200-350 (the just established town of Dallas had approximately the same population), arriving in 1855 and establishing their colony in what is now considered "West" Dallas, or "Far West" Oak Cliff. As most of the settlers were from urban backgrounds, possessed artisan rather than agricultural skills, and settled on land ill suited for farming at a time of drought and periodic hard freezes, their utopian agricultural colony was officially dissolved in 1957, and most of the colonists had reported left the settlement by 1860.

Many of those who left moved back to Europe or to New Orleans, but perhaps half remained in Texas, many in Dallas, and a few purchased their La Reunion holdings and remained there permanently. Of those who remained in Dallas, many are reported to have moved into the area which later became known as Deep Ellum and Old East Dallas. The map will attempt to show the diffusion of their influence in that part of Dallas by the distribution of street names related to the former Reunion Colonists, with which the author, as street name coordinator for the City of Dallas, has become familiar through the course of his work.

US 75 Corridor – Retail Trade Analysis 2002-2014

Bret Fenster, GISP, County of Collin, Texas

Rather than funding US 75 highway improvements through a tollway designation, Collin County is looking at innovative ways of funding improvements by capturing a portion of new sales tax revenues in the highway corridor. Revenue projections will be provided to the Texas Legislature in order to assess the viability of diverting future sales taxes towards corridor improvements. This study shows Texas State Comptroller retail trade data portrayed in graphs. The graph data correlates to the highway corridor and retail zoning areas in the cities.

The desired goal is keeping the lanes on a busy regional highway free from tolls and improving the mobility of the citizens in Collin County.

Creating a Geographical Information System (GIS) Database for Documenting Historical Structures at Rancho La Union Ranch, Zapata County, Texas.

Brent C. Hedquist Department of Physics & Geosciences, Texas A&M University-Kingsville

Mukti R. Subedi, Department of Physics & Geosciences and Department of Biological & Health Sciences, Texas A&M University-Kingsville

As one of the oldest continuously operating ranches in South Texas, Rancho La Union contains several historical structures of significance. It is critical that these historical structures are documented digitally and mapped for documentation and preservation purposes. This project involved the design and creation of a geodatabase and reference map that can be added to in the future and allow prospective visitors to view and read about historical building and structures from a website. The design of the geodatabase included defining the domains and subtypes for roads, buildings, and a corral, as well as digitizing the roads, corral, dam, and buildings on the ranch property. The final map (a GeoPDF) created in the project will aid in identifying the location of the historical ranch in South Texas, as well as key structures that have existed for over 150 years on the property, such as the corral and bunkhouse.



Our Weather. Your Map.

stop by the WDT booth for a quick demo



Finding Your Safe Space

Collin King & Bre Caller, BIS Consulting

Abstract: Using spatial analysis, we will be discovering which areas of Dallas county will be the safest in the event of a storm system producing a tornado. By dividing Dallas county into quadrants, taking fatalities, injuries, damages, EF rating, and distance covered by all tornadoes since the 1950's into account, and determining which quadrant would be the safest to settle if you were moving into the Dallas county area for the first time. This will be informative for various reasons, including the safest area statistically in the event of a tornado, and if you choose to move to another area in Dallas county, being informed enough to know that you are more likely to be hit by a tornado and should take necessary measures to prevent yourself from being the next victim.

Tornadoes: Paths through time

Bre Caller & Collin King, BIS Consulting

A category EF4 tornado, with winds of up to 180 mph, ripped through the eastern Dallas metroplex on December 26, 2015. Dallas has not seen a tornado of this intensity since 1959. BIS Consulting is producing a poster to show the impact of the 2015 tornado using a buffer analysis of the track and an intersect of the 2015 parcel data to show the estimated number of properties affected. We will also be comparing the damage caused by the two tornados in 2015 terms and investigating what damage the 1959 tornado track would have caused today.

Ozone Trend Analysis over Time and Geography: Houston, TX

Johnny Brown, Harris County & Nicole Bradstreet, CDM Smith

The aim of this study was to visualize what effect regulation had on ozone values near Houston, Texas and to determine the influence of land use features. This was done by employing eleven years (2004-2014) of air quality data provided by the Texas Commission on Environmental Quality via the U.S. Environmental Protection Agency. The data includes daily max ozone values for this entire time period, however, visualization contained in the study area demonstrates yearly

average AQI (air quality index) values. Temporally, values declined overall by approximately ten percent when comparing 2008 (when regulation capped ozone to 75 ppb) to 2014. Spatially, the greatest decrease in ozone emissions (2014/2008) occurred in rural areas (-19.9%), near airports (-12.06%), and in highway corridors (-11.77%). The smallest amount of decrease occurred in industrial areas (-7.74%) and beach/bay areas (-8.3%). Suburban and urban areas experienced decreases in the -9/-10% range.

GIS Products and Services at the National Weather Service in Corpus Christi, Texas

Michael Buchanan, National Weather Service Corpus Christi, Texas

Since 2007, the National Weather Service office located in Corpus Christi, Texas has developed a variety of GIS products and services for their local, regional, and national customers and partners. High resolution PNG graphics, KMZ files, and Web Mapping Services of weather and climate information are routinely created using a multitude of Python scripts. These GIS products and services are used to brief customers and partners on routine and significant weather impacts through a variety of email, web, and social media platforms. The easy-to-understand format of these GIS products and services greatly assists customers and partners in making critical weather-related decisions.

EXHIBITOR BIOGRAPHIES

PLATINUM SPONSORSHIP



Western Data Systems is an authorized Trimble Dealer specializing in the sales, rentals, training and technical support for Survey, Mapping, Marine, Utility, Environmental, Fleet Management and Seismic Industries. WDS was founded in 1982 and since then has concentrated on supplying top of the line Spatial Measurement and GPS related products in Texas and Oklahoma for sales and worldwide for rentals. We offer several peripheral items such as pipeline locators, ground penetrating radars, laser rangefinders, laser scanners, GPS cameras, barcoders, tablets and much more. WDS has two full Survey Supply stores in Texas and delivers wood, stakes, flags and any supply needed daily. With our extensive rental fleet we have more than enough gear to get you through any job and can ship worldwide. Our Technical Support staff is comprised of a staff that has worked in the field and can help out with any support need you have. We offer free support to both our rental and sales customers. WDS also manages the largest private VRS Network in the world. This network is available to both Survey and Mapping communities. We are adding base stations continuously and the amount of users grows each year. For a full line of our products and Services please visit our website at www.wds-us.com. With six offices across Texas and Oklahoma you are never too far from The Experts!



GOLD SPONSORSHIPS



The Cartegraph Operations Management System is designed and built to help public sector organizations save time and money. With its emphasis on adoptability, user experience, and return on investment, Cartegraph technology helps organizations effectively manage the work, assets, resources, and requests at the center of their day-to-day operations.





Since 1996, Cityworks® has been streamlining the way agencies manage public infrastructure and property. Built exclusively on Esri's ArcGIS technology, the Cityworks GIS-centric platform leverages the authoritative asset inventory maintained in the geodatabase to manage workflow, schedule resources and prioritize activities—saving time and money while improving operational efficiencies. Time-tested and proven technology, Cityworks is Empowering GIS® at more than 600 user sites around the world. Learn more at www.cityworks.com.



eGIS Associates, Inc. is focused on providing efficient and cost effective Geospatial Solutions that meet the growing needs of public and private sector enterprises. Our mission is to help you consume the "Power of Place" with current technology standards and **Applied Spatial Intelligence**®. eGIS offers a wealth of professional products and services including:

- Enterprise GIS Implementation
- Geodatabase Design
- Web & Mobile Application Development
- Field-to-Office Automation
- Business Systems Integration
- Geospatial Training and Support

eGIS is committed to customer satisfaction – **Relationships Matter**. Whether you need advice on your project or are looking for a relevant product or just have a technical question eGIS Associates stands ready to assist.



For the past 10 years Geospatial Training Services has provided a wide array of GIS training courses in many different formats. We provide training any time and any place! Through our online training platform we provide Esri, Open Source, Google Earth and Maps, and GPS training in

live and self-paced formats. Students have the option of taking classes at their own pace and on their own schedule. We also provide traditional classroom training options. For more information please visit our website at geospatialtraining.com.



SILVER SPONSORSHIPS



Aerial Services, Inc. (ASI) is an integrated team of professionals providing premier Aerial Acquisition, Digital Ortho, Vector Mapping, Terrain & LiDAR services to government, utilities, engineers, and other geospatial clients. Based in the Iowa heartland for

nearly 50 years, Aerial Services' strong work ethic, cutting-edge technology, and experienced staff combine to harness the power of geographic information and provide solutions you need. www.AerialServicesInc.com



Esri's geographic Information system (GIS) technology has given clients the power to think and plan geographically for over 45 years. Used today in more than 350,000

organizations worldwide, GIS helps cities, governments, universities, and Fortune 500 companies save money, lives, and our environment. GIS helps you understand and question data in ways that reveal relationships, patterns, and trends. So whether you are transporting ethanol or studying landslides, you can use GIS to solve problems and make better decisions, because a GIS enables you to look at your valuable data in a way that is quickly understood and easily shared. Esri supports the implementation of GIS technology on the desktop, servers, online services, and mobile devices.



Geomatic Resources is the premier Leica Geosystems dealer for Oklahoma, Arkansas and North Texas. Our firm was founded in 2005 with an

eye towards bringing value to the product by staffing with measurement and technical professionals. Colin Fletcher has over thirty years of measurement, construction and mapping experience.

We are proud to have a staff that includes two Professional Land Surveyors and a combined 100+ years of industry experience in Surveying, Construction, GIS, Machine Control, HDS, and software solutions. We don't just provide the best products, we provide superior solutions. We are professionals backing professional products and we are proud to be a part of SCAUG!



Sharpen Your Technology



RazorTek Inc. is a privately held GIS and Remote Sensing consulting firm specializing in design, development and automation of complex systems for spatial data display and analysis.

Established in 2002, RazorTek serves both the private and public sectors in providing services and technology assistance. We also offer onsite GIS training, data conversion services, data development, Georeferencing,



image processing and feature extraction. RazorTek is an authorized reseller for ESRI, LizardTech (GeoExpress), Terrago and RapidEye (satellite imagery) including a provider for satellite imagery from Digital Globe and a provider for aerial photography from 1inch to 2 feet plus LiDAR collects if needed. RazorTek is certified by the SBA as an 8(a) company and certified as a DBE (Disadvantage Business Enterprise) by the Tennessee Department of Transportation in addition we are certified as a MBE(Minority Business Enterprise) by the State of Tennessee and the NCTRA (North Central Texas Regional Certification Agency) in Texas. If more information is required for RazorTek capabilities please contact us by email (danr@razor-tek.com) or call us at 901-922-5448.



TNRIS was established by the Legislature in 1968 as the Texas Water-Oriented Data Bank. In 1972, after four years of growth and diversification, it was renamed the

Texas Natural Resources Information System. The mission of TNRIS is to provide a "centralized information system incorporating all Texas natural resource data, socioeconomic data related to natural resources, and indexes related to that data that are collected by state agencies or other entities." (Texas Water Code, 16.021). The staff includes individuals trained in the natural, computer and library sciences. TNRIS supplies data to government, academia, private sector, and to the public.



STANDARD SPONSORSHIPS



"A privately owned company based in the Dallas Fort Worth area, BIS is a full service IT & GIS products and services provider priding itself on quality, exemplary customer service and affordability. We always listen to our clients and understand that a successful GIS program has many unique challenges which vary

from business to business. We cater to the individual needs of our customers and place a premium on our business relationships. We are a ESRI Business Partner with an established, outstanding reputation in Texas. BIS has a team of 20 staff members ready to assist you with any project of any size. We will never charge for a conversation!"



Since 1999, Latitude Geographics has enabled people to make

better decisions about the world around them by helping them succeed with web-based geography. Hundreds of organizations worldwide rely on Latitude Geographics' Geocortex software to transform how they

design, develop and maintain world-class ArcGIS Server and ArcGIS Online web mapping applications. We can help you do even more, faster, at less cost and risk, and with better results. ArcGIS by Esri is the world's leading GIS platform, and since 2010 Latitude Geographics has been an Esri Platinum partner, a distinction shared by less than 1% of partners worldwide.



NewEdge Services, LLC is focused on implementing GIS, Asset/Work Management Systems, Cloud Hosting, and Related Services. **NewEdge** provides clients with turnkey solutions for a wide variety of needs and can provide additional resources for clients on specific projects. Our experience

demonstrates our abilities, which include:

- Database design, implementation, and management (Oracle, SQL, ArcSDE)
- Custom web and mobile applications
- Hosted cloud solutions
- GIS data creation
- GIS analysis
- Hard copy map/plan inventory, cataloging, and georeferencing
- System integration
- Asset/Work management system implementation and integration
- Permitting system implementation and integration
- User training and support
- And much more...

NewEdge has strategically aligned with multiple business partners to provide our clients with implementation services for products that are leaders in their perspective fields. Our long standing business partner relationships include: Amazon Web Services, CitySourced, Cityworks, Esri, Freeance, and Geocortex by Latitude Geographics. The **NewEdge** team has all of the knowledge, experience and expertise needed to successfully implement all GIS related projects. Our team has been working together since 2008 and has over **100 years** of combined

experience in working with multiple types of data, software, and technologies that will be critical for a successful project.



Founded in 1962, The Schneider Corporation is a leading provider of geospatial and e-government solutions to hundreds of municipal, county, state, federal, and private entities. A technology leader, Schneider provides innovative, industry-leading solutions to help organizations get the most from their limited resources, with creative product solutions such as Beacon™ and qPublic.net™ (local government information portals), Permitting™ (cloud-based permitting and work flow management), and IDAM™ (damage assessment software). Serving nearly 20% of the counties in the U.S., Schneider has a wide geographic footprint with several regional offices across the county. Schneider is a registered WBE and HUB.



United Geo Technologies, LLC

United Geo Technologies, LLC, your geospatial service provider, offers a wide range of services such as photogrammetry, orthophotography, parcel mapping, and geographic information systems. This small, woman owned business has extensive experience in the geospatial disciplines and our personnel include a Certified Photogrammetrist. UGT's personnel have extensive experience in the following areas:



- *Aerial Imagery Acquisition (both analog and digital)*
- *Airborne GPS*
- *Aerial Film Scanning*
- *CAD (MicroStation and AutoCAD)*
- *Contour Generation*
- *Digital Aerial Triangulation*
- *Digital Elevation Models (DEM)*

- *Digital Terrain Models (DTM)*
- *Digital Orthophotography (TIFF)*
- *Image Compression (MrSID, JPEG2000, ECW)*
- *LiDAR DTM and Contour Integration*
- *Parcel Mapping*
- *Geographic Information Services (ESRI)*
- *Plan and Profile*
- *Planimetric Feature Extraction*
- *UAV / Drone Image Processing*
- *Volume Computations*



Headquartered in Norman, Oklahoma, U.S. Weather Decision Technologies, Inc. (WDT) provides organizations with



weather analytics and decision support on a global scale. The company utilizes big data solutions to develop and provide weather analytics such as hazardous weather detection and prediction, high resolution forecasts, decision analytics, content for mobile apps as well as interactive mapping. WDT employs the world-renowned WeatherOps forecast team, staffed by experts who provide global asset protection and commodities trading decision support. Be it asset protection, positioning of goods and services ahead of weather or as response to weather, or simply warning the general public of impending adverse weather, WDT has a product to fit any need.

NON-BOOTH SPONSORSHIPS



Access Geographic serves local government, industry and utilities across Oklahoma, Texas, Louisiana

and Mississippi by using innovative geospatial technologies without losing sight that care and detailed craftsmanship still drives quality results. The AGI team is passionate about working with geography, and is continually inspired to make it an accessible and useful resource through discipline, creativity and respect for our clients. From aerial mapping to terrestrial LiDAR, Access Geographic works hard to find a solid solution for your geospatial goals and delivers products that you can trust.





The GIS Certification Institute (GISCI) is a tax-exempt not-for-profit organization that provides the geographic information systems (GIS) community with an internationally-recognized, complete certification program. GISCI offers participants from the first early years on the job until retirement, a method of developing value for professionals and employers in the GIS profession. There are

currently over 8000 active GISPs located throughout the world.

The current GISP Certification process consists of a Portfolio Application that describes an applicant's background in Ethics, Education, Experience, and Contributions to the Profession as well as the GISCI Geospatial Core Technical Knowledge Exam added in 2015. Selected GISPs performed groundbreaking work in the process of creating the Exam informed by both the Geospatial Technical Competency Model (GTCM) approved by the Department of Labor in 2010 and the GIS&T Body of Knowledge developed by UCGIS.



NOTES

GISP CHECKLIST

Description	Classification	Credit	Recertification Credit	Credits Earned
2½ Day 2016 SCAUG Conference (20 hour)				
Attendee (0.1 x # of days attended)	EDU	0.25	3.33	
Presenter (1 point per instance)	CON	1	3	
Poster Presenter (1 point per instance)	CON	1	3	
Poster Award Winner	CON	2	6	
1/2 Day Training (4 hour) (Training Certificate required for documentation credit.)				
ArcGIS Tips & Tricks	EDU	0.1	0.67	
Editing & Maintaining Parcels with ArcMap	EDU	0.1	0.67	
1 Day Training Instructor : _____	EDU	3	9	
1 Day Training (8 hour) (Training Certificate required for documentation credit.)				
Getting Answers & Solving Problems - An Intermediate Lesson in Spatial Analysis	EDU	0.2	1.33	
Editing Data Using ArcGIS for Desktop	EDU	0.2	1.33	
1 Day Training Instructor : _____	EDU	3	9	
2 Day Training (16 hour) (Training Certificate required for documentation credit.)				
Introduction to ArcGIS Pro for GIS Professionals	EDU	0.4	2.67	
Image Analysis with ArcGIS	EDU	0.4	2.67	
Programming ArcGIS with Python	EDU	0.4	2.67	
2 Day Training Instructor : _____	EDU	3	9	
Total GISP Credits Earned				

MAP BALLOT

MAP BALLOT

PLEASE VOTE FOR YOUR FAVORITE MAP

TEAR OUT AND TURN IN NO LATER THAN 2:30PM
THURSDAY, APRIL 21ST AT REGISTRATION

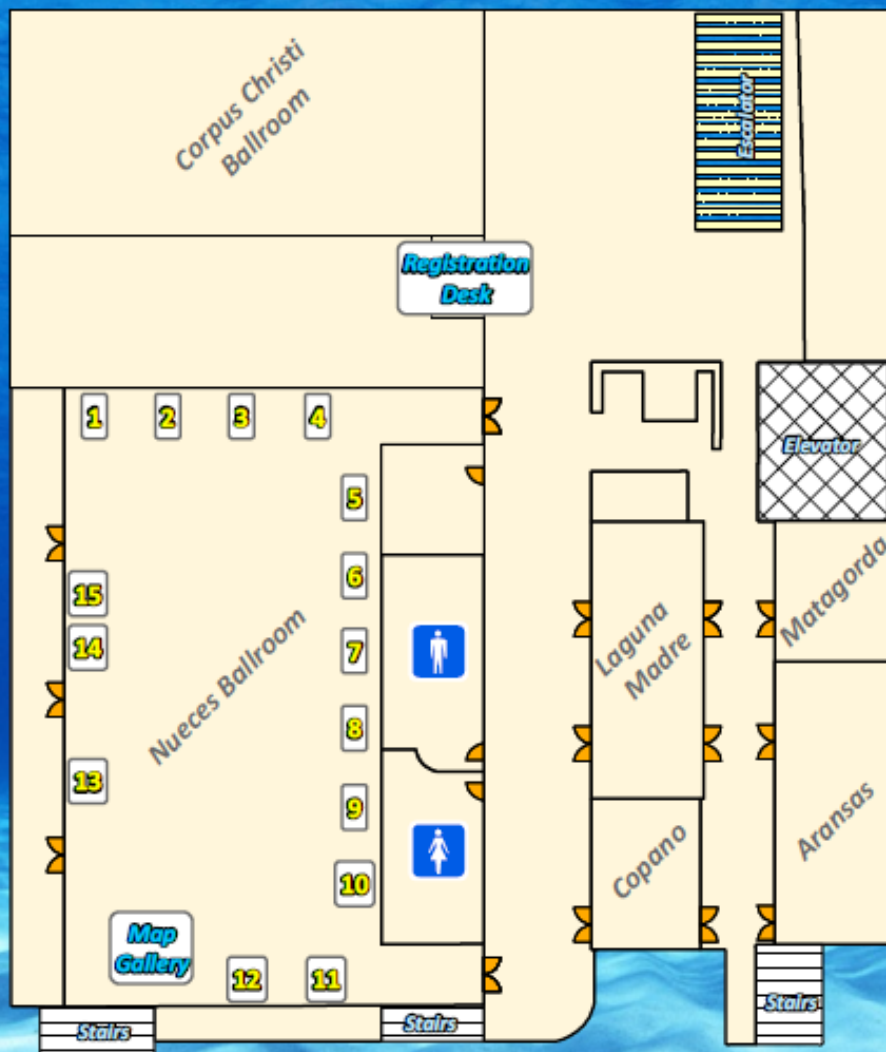
2016 Exhibitor & Conference Layout

Corpus Christi, TX Omni Hotel Third Floor

★ Platinum Sponsor

☆ Gold Sponsor

☆ Silver Sponsor



1. Cityworks☆☆

2. New Edge Services, LLC

3. Weather Decision Technologies, Inc. ☆

4. Western Data Systems ★

5. Latitude Geographics

6. Aerial Services, Inc. ☆

7. BIS Consulting

8. The Schneider Corp.

9. United Geo Technologies, LLC

10. Geomatic Resources ☆

11. Cartograph☆

12. TNIRIS ☆

13. ESRI ☆

14. eGIS Associates, Inc / GeoSpatial Training Services ☆

15. RazorTek Inc. ☆

Non Booth
Sponsors

GIS Certification Institute
Access Geographic, LLC

Please take a moment to thank the exhibitors for their interest & contributions to SCAUG over the years.



Your Trimble Sales and Rental Specialists

Allison Alford

Houston-Southeast TX

Regional Sales Manager
14722 Regnal Street
Houston, TX 77039

O: 888-700-5211

C: 281-797-2649

Cody Cantrell

North Texas - DFW

Regional Sales Manager
545 Commerce St. Ste. 100
Southlake, TX 76092

O: 877-902-8112

C: 469-865-8715

Robbie Trcka

Central and West Texas

Regional Sales Manager
10822 Hillpoint
San Antonio, TX 78217

O: 877-300-9659

C: 512-826-4290



Trimble®

Authorized Dealer