

**SCAUG & LA RS/GIS  
CONFERENCE**



**BATON ROUGE ÷ MARCH 27-31, 2017**

# THE CITY OF BATON ROUGE, PARISH OF EAST BATON ROUGE

**Welcomes  
South Central  
Arc User Group**



OPEN DATA BR 

 **BR** GIS 

## Mark Your Calendars!

# 2018 Louisiana Remote Sensing GIS Workshop

**May 8-9, 2018  
New Orleans, LA**

## **TABLE OF CONTENTS**

South Central Arc User Group Presidential Address	1
Louisiana Remote Sensing GIS Address	2
South Central Arc User Group Officers	3
Louisiana Remote Sensing GIS Workshop Committee	4
Complimentary Online GIS Training Suite	5
Training	6
Opening Business Agenda	7
Contributor Recognitions	7
Plenary	8
Exhibitor Event Sponsorships	9
Social Events	10 - 11
Hands on Learning Lab	12
Save the Date	14
Restaurant Discounts	14
General Schedule Wednesday, March 29	15 – 16
General Schedule Thursday, March 30	17 - 19
General Schedule Friday, March 31	19
Esri Success Stories & Technical Session Abstracts	21 - 24
User Presentation Abstracts	33 - 47
Exhibitor Biographies	48 - 58
Map Gallery Ballot	59 - 60
Visit Baton Rouge QR Codes	61
GISP Checklist	62
Exhibitor Hall & Conference Layout	Inside Back Cover



**Conference Guide QR CODE**

## **SOUTH CENTRAL ARC USER GROUP PRESIDENTIAL ADDRESS**

On behalf of one of the largest collective Regional Conference Committees I have had the pleasure to work with, I would like to thank you for attending this groundbreaking conference in the historically rich city of Baton Rouge, Louisiana. This unique event represents the first time that two of the longest standing GIS professional organizations in the state of Louisiana are combining their annual conferences to better serve the Louisiana GIS community and coordinate our efforts. The South Central Arc User Group (SCAUG) has 27 years of GIS experience predominately in the four state regions of Oklahoma, Texas, Louisiana, and Mississippi. The Louisiana Remote Sensing / GIS Workshop (LA RS/GIS) represents 33 years of GIS and Remote Sensing professional leadership within Louisiana. With a collective lineage of six decades in GIS we are all committed in providing the best GIS resources to help you develop professionally.

Even though the primary focuses of this conference are GIS professional growth and development we are committed to keep the City of Baton Rouge and Louisiana's distinct culture and experiences a consistent theme during the week. We sincerely hope that you enjoy our time together and make the most of it. Both organizations have worked diligently over the past year to blend the long standing traditions within each organization and the professional needs of the conference attendees while looking forward to bring the latest technology to each of you. During this week we urge you to take full advantage of all the resources that have been provided. Only you can truly evaluate how well we did our job. We welcome your feedback throughout the week to make next year even better.

While we feel confident by the end of the week you will have found all the presentations, workshops, training courses, & technical sessions to be productive we moreover hope that the professional networking you have been part of continues long after the conference concludes. The training will become obsolete soon when new technology arises, but the friendships created and developed during this week are the most valuable lasting resource you could possibly walk away with. As iron sharpens iron so a man sharpens the countenance of his friends. I personally am a sharper and richer person after getting to work with such a wonderfully diverse group of peers. Some I merely knew as colleagues a year ago I now call my friends.

Enjoy our time together,

*Charles Brady III*

Charles Brady III, GISP, Regional SCAUG President



## **LOUISIANA REMOTE SENSING GIS ADDRESS**

On behalf of the Louisiana Remote Sensing GIS Workshop Committee I would like to welcome you to Louisiana in general and to Baton Rouge in particular. Baton Rouge is our state capitol, home to LSU, our largest university, and the second largest metropolitan area in the state. It is known for friendly people, great food and diehard sports fans. All three of those elements are combined when tail-gating season begins for LSU football in the fall and baseball in the spring.

The Louisiana Remote Sensing GIS Workshop is celebrating our 33rd year as a statewide GIS conference and our first year putting on a joint conference with SCAUG. We are thrilled that you are here and we know how difficult it will be to match the generous hospitality shown to our members when they have attended SCAUG events in other states.

The Joint Conference committee has put together a diverse program of hands-on training labs and a variety of speakers who can talk knowledgeably about many of the same geospatial technology issues you are facing now, or will face in the immediate future. We know you will gain some insights and hopefully some new friends and professional contacts as well.

Besides the many opportunities for advancing professionally, I hope you will also take advantage of the many social events that we have planned for your visit; including the Geocache Event on Wednesday evening, the Crawfish Boil on Thursday evening and a guided tour of downtown sites on Friday morning.

We welcome you to Baton Rouge and as our French speaking friends from South Louisiana would say. “we hope you pass a good time”.

Regards,

*Craig Johnson*

GIS Manager  
St Tammany Parish Government

## **SOUTH CENTRAL ARC USER GROUP OFFICERS**

**President: Charles Brady III, GISP**

City of Ardmore, Oklahoma

**Vice President: Shellie Willoughby, GISP**

Oklahoma Office of Geographic Information, Oklahoma City, Oklahoma

**Treasurer: James Allen**

Carter County, Ardmore, Oklahoma

**Secretary: Anne Mackey, GISP**

Tarrant County Transportation, Fort Worth, Texas

**Conference Coordinator: Betsi Chatham**

City of Grapevine, Texas

**Conference Coordinator Elect: Lydia Saucedo, GISP**

CPS Energy, San Antonio, Texas

**North Texas Representative: Amy Rose**

City of Dallas, Texas

**South Texas Representative: Leslie Morgan Ph.D.**

GISNuts, San Antonio, Texas

**Louisiana Representative: Xingwen Chen Ph.D.**

ABCD GIS Mapping, LLC, Shreveport, Louisiana

**Mississippi Representative: Scott Trapolino, GISP**

DeSoto County, Hernando, Mississippi

**Oklahoma Representative: Will Gustafson, GISP**

Meshek & Associates, PLC, Tulsa, Oklahoma

**Esri Representative: Mike Beavers**

Esri - San Antonio, Texas

**Mascot: TUG**

South Central United States

## **LOUISIANA REMOTE SENSING GIS WORKSHOP COMMITTEE**

**Dewitt Braud**

Louisiana State University

**Kathrine Cargo, GISP, ENP**

Orleans Parish Communication District

**Chris Cretini**

U. S. Geological Survey

**Lynn DuPont, GISP, ASLA**

Regional Planning Commission New Orleans

**Fran Harvey, GISP**

LA RS and GIS Institute

**Craig Johnson, Ph.D.**

St. Tammany Parish Government

**Warren Kron, GISP**

City of Baton Rouge

**Rusti Liner, GISP**

Geofemme

**Molly McGraw, Ph.D., GISP**

Southeastern Louisiana University

**Brad Mooney, GISP**

Louisiana Department of Wildlife & Fisheries

**Aimee Preau, GISP**

Louisiana Department of Environmental Quality

**John Sheehan**

Louisiana Department of Environmental Quality

## **COMPLIMENTARY ONLINE GIS TRAINING SUITE**

SCAUG is continually striving to provide the GIS professionals in the region the most cost effective, relevant training possible to our members. SCAUG has purchased every SCAUG member an annual subscription to a full suite of training courses for a full year. There is no catch. Take as many or as few of the courses as you like whenever you like. **Attendance to the 2017 SCAUG & LA RS/GIS Conference includes a one-year annual membership which entitles all attendees access to the Complimentary Online GIS Training Suite.**

### **ArcGIS Desktop**

ArcGIS Desktop 101 (ArcGIS 10.0)

Learning ArcGIS Desktop 10.1

Working with Geodatabases and Linear Referencing

Editing in ArcGIS 10

Using AutoCAD Data in ArcGIS

Introduction to ModelBuilder

Programming ArcObjects with .NET

Working with Geometric Networks

Using Spatial Analyst for ArcGIS 10

Programming ArcGIS with Python Workshop

### **ArcGIS Server**

Introduction to ArcGIS Server 10.0

Introduction to ArcGIS Server 10.1

Programming ArcGIS Server with Silverlight

Building Custom ArcGIS Server Applications with JavaScript

Introduction to Managing ArcSDE with SQL Server

Building ArcGIS Applications with Web AppBuilder

### **Web Based**

Introduction to ArcGIS Online

Building GIS Web Sites without Programming – Using CartoDB

HTML5 and CSS3 for GIS Web Developers

Design and Build GIS Web Sites Like a Pro

Programming the ArcGIS API for Flex

JavaScript Fundamentals for Web and Mobile Application Development

### **Misc. Supplemental Training**

Introduction to Programming the Google Maps API

Advanced Google Maps API Programming

Converting ArcGIS Data to Google Earth

Mastering KML for Google Earth

Creating Real Time Google Earth Applications

Fundamentals of Google Earth Pro

Google Earth for Real Estate Professionals

Introduction to OpenLayers Programming

## **TRAINING**

### **HOTEL TRAINING CLASSES**

<b>MONDAY, MARCH 27</b>		
<b>CLASS</b>	<b>ROOM</b>	<b>TIME</b>
Introduction to ArcGIS Pro for GIS Professionals	Governor	8am - 5pm
ArcGIS 4: Sharing Content on the Web	Paramount	8am - 5pm

<b>TUESDAY, MARCH 28</b>		
<b>CLASS</b>	<b>ROOM</b>	<b>TIME</b>
Introduction to ArcGIS Pro for GIS Professionals	Governor	8am - 5pm
ArcGIS 4: Sharing Content on the Web	Paramount	8am - 5pm

### **FRIDAY, MARCH 31**

<b>CLASS</b>	<b>ROOM</b>	<b>TIME</b>
High Accuracy Mobile Data Collection using Esri's Collector and Trimble TerraFlex Apps	Louisiana	8am - 12pm

### **DEQ TRAINING CLASSES**

Louisiana Department of Environmental  
Quality (DEQ)  
602 N. 5th Street | Baton Rouge LA 70802  
Galvez Building | 10<sup>th</sup> Floor

<b>MONDAY, MARCH 27</b>		
<b>CLASS</b>	<b>ROOM</b>	<b>TIME</b>
Programming ArcGIS with Python	1041	8am - 5pm
ModelBuilder Basics	1042	8am - 5pm

<b>TUESDAY, MARCH 28</b>		
<b>CLASS</b>	<b>ROOM</b>	<b>TIME</b>
Programming ArcGIS with Python	1041	8am - 5pm
Editing Data Using ArcGIS for Desktop	1042	8am - 5pm

## **OPENING BUSINESS AGENDA, WEDNESDAY, MARCH 29 8:30am**

Welcome - Mayor of Baton Rouge

Conference Committee Welcome & Introduction

Conference Agenda

Contributor Recognitions

Special Achievement & Distinguished Service Awards

Collaborative & Memorial Scholarship Winners

Founders & Thumbs Up Award Winners

URISA Update

App Contest Demos

2017 SCAUG Officers

### **CONTRIBUTOR RECOGNITIONS**



**Louisiana Department of Environmental Quality**  
Computer Training Labs

**Lower Rio Grande Valley Development District**

Mobile Training Computer Lab

Conference Guide Printing





**WORKING TOGETHER: A LOCAL, STATE & FEDERAL PARTNERSHIP USING GIS TO RESPOND TO A 1000 FLOOD EVENT**

Rusti Liner, GISP | Deputy Geospatial Unit Lead Katrina & 2016 August Flooding  
Warren Kron, GISP, City of Baton Rouge and Parish of East Baton Rouge

In August 2016, a multi-billion dollar flooding event unloaded 7 trillion gallons of rain in the greater Baton Rouge region. As local rivers exceeded record levels, GIS teams in local, state and federal agencies leveraged their best GIS technology to map road closures, coordinate search and rescue operations, and provide timely information to decision-makers. Analysts compiled data from a variety of sources to develop estimated flood inundation areas and used this data to calculate damages to property and infrastructure. Hear from two GIS leaders who will speak about ongoing data challenges even in a Post-Katrina disaster environment, and how critical partnerships and coordination are improving. The speakers will also highlight innovative geospatial solutions used during the response and recovery periods of “The Great Flood.”

**PLENARY SPEAKERS**

**Rusti Liner** has been a GIS professional since 1994 and holds a Master of Science degree from the University of Southern Mississippi. An LSU graduate, mother of a beautiful ballerina who had her first professional dance debut with the Russian Moscow Ballet this past November, Ms. Liner appreciates the fine arts and incredible artist community in the Baton Rouge area. Rusti served as the Chair for the Louisiana Geographic Information Systems Council this past year and as Vice Chair the year before. She has participated in multiple disaster deployments across the country including the 2004 Hurricanes in Florida, Katrina, Rita, Gustav, Isaac and most recently the March and August flooding in Louisiana. During the BP Oil Spill, she served as a volunteer animal transport chauffeur, carrying injured and contaminated wildlife to treatment facilities. Ms. Liner has presented at the ESRI International User’s Conference as well as the National Emergency Management Summit. She is a certified GIS professional.

**Warren Kron** is the GIS Manager at the Department of Information Services for the City of Baton Rouge and Parish of East Baton Rouge, Louisiana. Over the last 18 years, Warren's public service experience has been focused on the development of an Enterprise GIS Program. This effort has involved being part of multi-disciplinary projects, developing a data model, building web applications, and playing a key role in the City-Parish's shift to Open Data. He earned a bachelor's degree of landscape architecture from the Louisiana State University Robert Reich School of Landscape Architecture. He serves as the Louisiana Municipal Association member to the Louisiana GIS Council and was elected chairman for 2017. Warren is a certified GIS Professional and when he is not working, he enjoys golfing, gardening, and traveling.

EXHIBITOR EVENT SPONSORSHIPS

OPENING BREAKFAST - PLATINUM



---

EXHIBITOR RECEPTION - GOLD



---

COFFEE BREAKS - SILVER



---

GEOCACHE EVENT

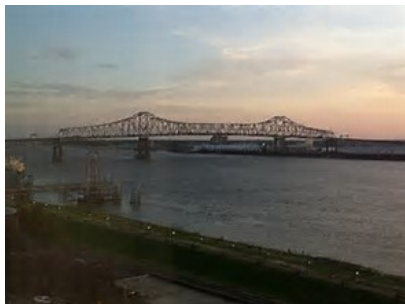


## **SOCIAL EVENTS**

### **MEET & GREET | HEILDELBURG**

Tuesday, March 28 | 6:00pm – 8:00pm

Join us for food, drinks, and conversation from a spectacular view of the Mississippi River at sunset atop the Hilton Capitol Center Hotel. A great time to catch up with the old and meet the new! Each attendee receives 2 drink tickets upon registration material pickup, and they can be used at the Meet & Greet and Exhibitor Reception.



### **EXHIBITOR RECEPTION | RIVERVIEW BALLROOM**

Wednesday, March 29 | 5:00pm – 7:00pm

The official opening of the Exhibitor Hall welcomes everyone to meet exhibitors in a fun social atmosphere. The Exhibitor Spotlight grants each exhibitor a few minutes dialogue on what solutions they can provide, which gives time to make note of what exhibitors to formally visit the next day. Don't forget to acquire Exhibitor Door Prize Tickets from our exhibitors in hopes to win something during the door prize drawings at 3:30pm Thursday, March 30. Must be present to WIN!!! It is also **PINT GLASS** pick up time – be sure to get one to add to your collection.

### **GEOCACHE EVENT | DOWNTOWN BATON ROUGE**

Wednesday, March 29 | 7:00pm – 9:00pm

WDS and NEI will host a GeoCaching competition, and the winning team members will receive a prize in the end for first place. If you have signed up for this event during your conference registration, please gather in the Exhibitor Hall at 6:45pm to be assigned to a team.

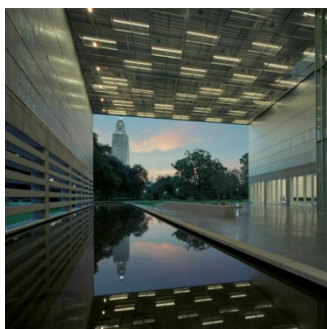
Each of the 20 team will be assigned to one of four groups. Each team will navigate to various caches in downtown Baton Rouge using clues and a handheld GPS preloaded with the cache coordinates. Upon arrival

at each cache, the team will be presented a playing card. Once the team has obtained five playing cards proceed to LavaCantina where a judge will determine which team has the best poker hand. The winner of each group will advance to a playoff with all new cards handed out and the winner of that playoff is the overall winner.



## **CRAWFISH BOIL | CAPITOL PARK MUSEUM**

Thursday, March 30 | 5:30pm – 7:30pm

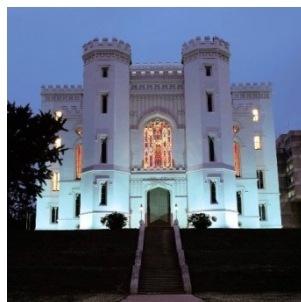


Wind down after a few days of conferencing under the Capitol Park Museum breezeway and a grand view of the Louisiana State Capitol. A traditional crawfish boil will be served with frosty cold beverages and southern hospitality. The Capitol Park Museum is located at 660 N. Fourth Street, and is about a 10-minute walk (0.5 miles) from the Hilton.

## **LOUISIANA OLD STATE CAPITOL TOUR**

Friday, March 31 | 10:00am – 12:00pm

Louisiana's Old State Capitol, a Gothic architectural treasure, stands high on a bluff overlooking the Mississippi River. The 165-year-old statehouse has withstood war, fire, scandal, abandonment and an occasional fistfight. Located at 100 North Blvd, it is only a 2-minute walk from the Hilton. Doors open at 10am, and please be sure to tell museum staff you are with the SCAUG & LA RS/GIS Conference so that your entry is paid. Along with a viewing of the Ghost of the Castle, an interactive short film of the amazing and inspiring history of the building.



## **HANDS ON LEARNING LAB**

The Hands-on Learning Lab (HOLL) is a training resource provided and developed by Esri Training Services. The Lab is an excellent way to introduce ArcGIS users to a variety of Esri software solutions and training opportunities while learning to use Esri software. The best part is that it is FREE with conference registration!!!

Attendees will be able to sign up for lessons during HOLL hours of:

- 1:30pm to 5:00pm on Wednesday, March 29
- 8am to 3pm on Thursday, March 30
- 8am to 12pm on Friday, March 31

The HOLL consists of a group of laptops with headphones where students can work through lessons at their own pace. A lesson consists of a recorded presentation followed by a hands-on exercise. Each lesson typically takes about 45 to one hour to complete and students can generally come and go as they please. An Education Services instructor will be on hand to assist users with questions.

### **HOLL LESSONS**

1. Getting Started with GIS 1: Understanding the ArcGIS Platform
2. Getting Started with GIS 2: Using ArcMAP to Explore GIS Data
3. Getting to Know ArcGIS Pro
4. Advantages to Storing Your GIS Data in the Geodatabase
5. Creating Presentation Quality Maps in ArcMap
6. Editing GIS Data in ArcMap
7. Multi-user Editing Using Versioning
8. Editing and Maintaining Parcels Stored in a Parcel Fabric
9. Geocoding Street Addresses to Create Map Points
10. Importing and Preparing CAD Data for Use in ArcGIS
11. The Importance of Spatial Reference in Tactical Applications
12. Exploring Health and Epidemic Patterns Using Spatial Statistics Tools
13. Optimizing Transportation Routing Using ArcGIS Network Analyst
14. Modeling Time and Distance Along Networks Using Linear Referencing
15. Working with Geometric Networks to Manage Utilities and Water Runoff
16. Interpolating Sample Points to Create Rasters Using Spatial Analyst Tools
17. Geoprocessing GIS Data Using Python
18. Sharing Maps and GIS Content Using ArcGIS Online
19. Understanding Web Services Using ArcGIS for Server
20. Generating Web Applications for the GIS Novice
21. Getting Started with the Community Maps Data Preparation Tools
22. Mapping Excel Data Using Esri Maps for Office

# Training for the GIS Professional

Since 2005



<http://geospatialtraining.com>



## Our Most Popular Courses

- Programming ArcGIS with Python Workshop
- Building Custom ArcGIS Server Applications with JavaScript
- Introduction to ArcGIS Online
- Fundamentals of Google Earth Pro
- Open Source GIS Bootcamp
- Many More!

*Traditional Classroom, Live-Online, Self-Paced Online  
Free Recorded Webinars <http://vimeo.com/geospatialtraining>*



## **SAVE THE DATE**

### **LAURISA**

Thursday, April 13 | Workshop

Thursday, April 20 | Networking Social

### **SCAUG Mixer at the Esri User Conference**

July 11, 2017 | San Diego Convention Center

### **OKSCAUG Conference**

September 19, 2017 | Oklahoma City, Oklahoma

### **Mississippi Geospatial Conference**

October 2017 | Long Beach, Mississippi

### **Texas GIS Forum**

October 2017 | Austin, Texas

### **2018 Regional SCAUG Conference**

April 9 - 13, 2018 | San Antonio, Texas

### **Louisiana Remote Sensing GIS Workshop**

May 8 - 9, 2018 | New Orleans, Louisiana

## **RESTAURANT DISCOUNTS**

### **Cocha - \$5 off entrée or large offering**

445 N 6th St

[www.cochabr.com](http://www.cochabr.com)

Mon-Sun 11am – 9pm

Closed Tuesday

### **Jolie Pearl Oyster Bar – 10% off**

315 North Boulevard

[www.jolieoysterbar.com](http://www.jolieoysterbar.com)

Mon-Thurs 11am-10pm

Fri - Sat 11am- midnight

Sun 11am-5pm

### **Capital City Grill – 10% off**

100 Lafayette St.

[www.capitalcitygrill.net](http://www.capitalcitygrill.net)

Mon-Wed 11am-9:30pm

Thurs-Sat 11am-10:30pm

Sunday 11am-3:30pm

### **Stroube's Chophouse – 10% off**

107 Third St.

[www.stroubes.com](http://www.stroubes.com)

Mon-Fri 11-3:30

Mon-Sat. 4pm-10pm

**GENERAL SCHEDULE WEDNESDAY, MARCH 29**

**REGISTRATION | 7:00am - 5:00pm**  
**Foyer**

**OPENING BREAKFAST | 7:30am - 8:30am**  
**Riverview Ballroom**  
**Sponsored by Western Data Systems**

**OPENING BUSINESS | 8:30am - 10:15am**  
**Riverview Ballroom**

**RUSTI LINER & WARREN KRON PLENARY | 10:30am - 11:30am**  
**Riverview Ballroom**

**LUNCH ON YOUR OWN | 11:30am - 1:30pm**

**ESRI HANDS ON LEARNING LAB 1:30pm - 5:00pm**  
**Governor Room**

**MAP GALLERY POSTERS DUE 2:00pm**  
**Registration Desk**

**SESSION TRACK I | 1:30pm - 2:30pm**

<b>King</b>	<b>Louisiana</b>	<b>Paramount</b>
<b>LEVERAGING ESRI'S LOCAL GOVERNMENT SOLUTIONS FOR THE CITY OF NEW ORLEANS</b> Greg Hymel Brig Bowles	<b>TEACHING THE ARCGIS PLATFORM - BUILDING THE FUTURE GIS WORKFORCE</b> J. Scott Sires Pam Kersh	<b>PREPARING &amp; PUBLISHING DATA WITH ARCGIS PRO TO BUILD WEB APPS</b> Warren Kron Justin Priola Mike Beavers

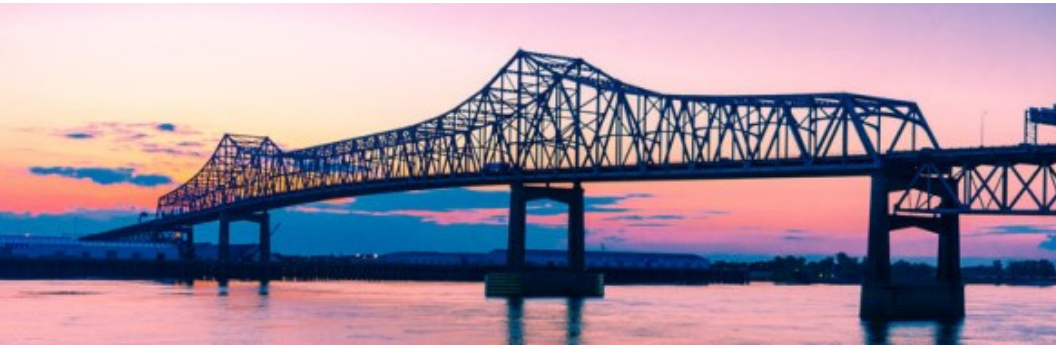
**GENERAL SCHEDULE WENDESDAY, MARCH 29**

Sessions II   2:45pm - 3:45pm		
King	Louisiana	Paramount
<b>OPERATIONS DASHBOARDS</b> Corporal Dwight Beaty Zena Pelletier	<b>GREATER FIELD OPERATING EFFICIENCIES WITH MOBILE GIS</b> Pam Kersh	<b>COTS TEMPLATES &amp; WEBAPP BUILDER APPS</b> Mike Beavers

SESSION TRACK III   4:00pm - 5:00pm		
King	Louisiana	Paramount
<b>WHAT'S NEW WITH ARCGIS 10.5</b> Brig Bowles	<b>INSIGHTS/OPEN DATA</b> Katherine Smyth Mike Beavers	<b>3D GIS</b> Zena Pelletier

**EXHIBITOR HALL RECEPTION 5:00pm - 7:00pm**  
**Riverview Ballroom**  
**Sponsored by**  
**City of Baton Rouge, Cityworks, eGIS & Associates, Environmental  
Science Services, Inc., Geospatial Training Services, & Surdex**

**GEOCACHE EVENT | 5:00pm - 7:00pm**  
**Downtown Baton Rouge**  
**Sponsored by WDS & NEI**



## **GENERAL SCHEDULE THURSDAY, MARCH 30**

**REGISTRATION 7:30am - 2:30pm**  
**Foyer**

**CONTINENTAL BREAKFAST | 7:30am - 9:30am**  
**Riverview Ballroom**  
**Sponsored by**

**EXHIBITOR HALL & MAP GALLERY | 8:00am - 4:30pm**  
**Riverview Ballroom**

Vote on your favorite map in the Map Gallery, and tear out and submit ballot at Registration Desk no later than 2pm. The Map Ballot can be found on pages 57 and 58.

**ESRI HANDS ON LEARNING LAB | 8:00am - 3:00pm**  
**Governor Room**

### **SESSION TRACK I | FEDERAL DATA INITIATIVES | 8:30AM - 9:30AM**

<b>King</b>	<b>Louisiana</b>	<b>Paramount</b>
<b>WHAT'S NEW WITH THE USGS NATIONAL GEOSPATIAL PROGRAM?</b> Chris Cretini Claire DeVaughan George Heleine	<b>USAGE OF GIS IN POST- EVENT ANALYSES AT THE NATIONAL WEATHER SERVICE LOWER MISSISSIPPI RIVER FORECAST CENTER</b> David Schlotzhauer & Scott Lincoln	<b>2020 DECENNIAL CENSUS – GEOGRAPHIC PARTNERSHIP OPPORTUNITIES</b> Joanna Pitsikoulis <b>DRAWING FAIR LEGISLATIVE DISTRICTS BASED ON TERRITORIAL COMMUNITIES TO ACHIEVE PARTISAN SYMMENTRY</b> Robert Winkler

**STUDENT MAP POSTER COMPETITION | 9:30am - 10:30am**  
**Foyer**

An Executive Team will be interviewing and judging the Student Map Gallery, and 1<sup>st</sup>, 2<sup>nd</sup> and 3<sup>rd</sup> places will be announced at 3:30pm in the Exhibitor Hall. Attendees are encouraged to converse with students as well.

## GENERAL SCHEDULE THURSDAY, MARCH 30

### **SESSION TRACK II | EMERGENCY RESPONSE & LOCAL GOVERNMENT APPLICATIONS | 10:30AM - 11:30AM**

<b>King</b>	<b>Louisiana</b>	<b>Paramount</b>
<b>STORY MAPS FOR BOND PROPOSAL FOR POSSIBLE FIRE STATION LOCATION</b> Ronald Vaughn Sr. <b>REAL-TIME POLICING USING GIS</b> Brandon Jumonville, Warren Kron & Sgt. Neal Noel	<b>A DARK AND STORMY NIGHT - A GIS SURVIVOR STORY</b> Olesya Powers <b>GIS &amp; REMOTE SENSING TOOLS SUPPORT COMMERCIAL SUPPLY CHAIN</b> Wendi Couvillion French, Stephen French, Adam Perschall, Lori Cunningham & Dion O Reilly	<b>USING WEB APPBUILDER FOR ARCGIS ONLINE TO DEPLOY WEB APPLICATIONS FOR DISASTER FELID ASSESSMENTS</b> Chelsea Core & Doug Albert <b>GIS SYNERGY IN A WEB-ENABLED WORLD</b> Alison Kuemmel & Caroline Demay

### **EXHIBITOR LUNCHEON | 11:30am – 1:00pm Riverview Ballroom**

### **SESSION TRACK III | REMOTE SENSING ANALYSIS & GIS APPLICATIONS | 1:00PM - 2:00PM**

<b>King</b>	<b>Louisiana</b>	<b>Paramount</b>
<b>SPATIAL CONFIGURATION TRENDS IN COASTAL LOUISIANA FROM 1985 TO 2010</b> Holly Beck <b>LAND AREA CHANGE IN COASTAL LOUISIANA (1932 TO 2015)</b> Brady Couvillion	<b>USING GIS TO CALCULATE IRRIGATED CROP AREAS AND WATER USE IN LOUISIANA 2004-2016</b> Krishna Paudel, Huizhen Niu & Dependra Bhatta <b>USING GIS AND REMOTE SENSING TO MAP THE HABITATS OF PROTECTED AREA; OROUG BANI</b> M'arad, Saudi Arabia Ali Aldosari	<b>PIPELINE GPS DATA COLLECTION</b> Joseph Nicolosi <b>A GIS-BASED APPROACH TO ENVIRONMENTAL JUSTICE IMPACT ASSESSMENTS</b> Alex Couch

## **GENERAL SCHEDULE THURSDAY, MARCH 30**

<b>SESSION TRACK IV   DATABASE DEVELOPMENT   2:15pm - 3:15pm</b>		
<b>King</b>	<b>Louisiana</b>	<b>Paramount</b>
<b>LA DOTD DATA AND MAP SERVICES</b> Brian Reigh <b>SUCCESSFUL FIELD DATA COLLECTION USING COLLECTOR FOR ARCGIS AND SURVEY 123</b> Jennifer Harrison	<b>GIS AND CITYWORKS MOBILE ASSET MANAGEMENT</b> Blake Mize <b>THE BENEFITS OF A GIS-BASED ROUTE AND SITE SELECTION</b> Rachel Turney-Work	<b>HOW TO RUN A CHEAP GIS SHOP</b> Brenda Fennel <b>USING ADVANCED CARTOGRAPHIC TECHNIQUES TO CREATE AN AWARD WINNING MAP</b> Rebecca Broadbent

### **EXHIBITOR DOOR PRIZES & APP/MAP WINNERS | 3:30pm – 4:30pm** **Riverview Ballroom**

Last chance to connect with exhibitors!!! The Student Map Poster, Map Gallery, and App Contest winners will be announced along with Exhibitor Door Prize Winners being drawn - MUST BE PRESENT TO WIN!

### **CRAWFISH BOIL | 5:30P – 7:30PM** **Capitol Park Museum**

## **GENERAL SCHEDULE FRIDAY, MARCH 31**

<b>TRAINING WORKSHOP</b>	<b>ROOM</b>	<b>TIME</b>
Hands on Learning Lab	Governor	8am - 12pm
Editing & Maintaining Parcels with ArcMap	Louisiana	8am - 12pm
Old State Capitol Tour	Old State Capitol	10am-12pm





*Surdex Corporation, a full service aerial survey mapping firm.*

*Sales Contacts:*

Tim Donze - [timd@surdex.com](mailto:timd@surdex.com)

Ed Turner - [edt@surdex.com](mailto:edt@surdex.com)

Ryan Burley - [ryanb@surdex.com](mailto:ryanb@surdex.com)

Aerial Imagery Acquisition  
Oblique Imagery Acquisition  
LiDAR Collection and Processing  
Digital Orthophotography  
Planimetric Mapping  
Topographic Mapping  
Unmanned Aerial Systems



[WWW.SURDEX.COM](http://WWW.SURDEX.COM)

***SESSION TRACK I | 1:30PM – 2:30PM***

**LEVERAGING ESRI'S LOCAL GOVERNMENT SOLUTIONS FOR THE CITY OF NEW ORLEANS**

Greg Hymel, City of New Orleans

Brig Bowles, Esri

**KING**

The City of New Orleans embraced GIS decades ago and authoritative spatial data is now interwoven with several essential government services. In 2011, a civil servant based Enterprise GIS team was formed to bring together various data silos and pockets of spatial data into a more organized environment. Limited budgets require everyone to do more with less, and the need for solutions was greater than the resources available to build enough applications from scratch. ArcGIS for Local Government has provided a springboard for new solutions for ourselves and for our citizens, including opportunities to collaborate with ESRI on what we needed next.

**TEACHING THE ARCGIS PLATFORM - BUILDING THE FUTURE GIS WORKFORCE**

J. Scott Sires, Brookhaven College

Pam Kersh, Esri

**LOUISIANA**

We regularly move to new versions and releases, adopt new technology, and review our license provisions because everything gets better fast. We wouldn't go back. We share our experience discussing the need, the tools, and the deployment of building solutions using current platform components. Students must know all aspects of the ArcGIS Platform to ensure they are workforce ready. Through our Esri partnership, and the Esri licensing model, students are able to access all components of the ArcGIS Platform, gain experience and hit the ground versed in the benefits of staying on the leading edge of the Platform.

## **PREPARING & PUBLISHING DATA WITH ARCGIS PRO TO BUILD WEB APPS**

Warren Kron & Justin Priola, City of Baton Rouge and Parish of East Baton Rouge

Mike Beavers, Esri

**PARAMOUNT**

See how the City of Baton Rouge uses ArcGIS software to prepare data from third party sources and publish it for everyone to view. GIS analysts will demonstrate how they take data in spreadsheet format and further develop it to build custom applications using WebApp Builder. Analysts used ArcGIS Pro and ArcGIS Online extensively to prepare, analyze, and release data related to the August 2016 major flooding event, and continues to use the software to track ongoing flood debris collection efforts in the parish. Also, the demo will showcase how the same software is used to prepare and release the parishwide results for national and municipal elections.

### ***SESSION TRACK II | 2:45PM – 3:45PM***

#### **OPERATIONS DASHBOARDS**

Corporal Dwight Beaty, City of Dallas

Zena Pelletier, Esri

**KING**

Using Operations Dashboards to quickly identify, analyze, and manage crime patterns that are occurring by specific time of day, week, month or location. Dallas PD uses Esri's GIS technology for solutions to combat crime, make predictions, and to track resources. Ops Dashboard integrates all of DPD's geographically referenced information i.e. Police Divisions, Beats, Hot Spots, crime etc. allowing investigators, commanders and front line patrol officers to view, interpret, and visualize the data.

Ops Dashboards reveals the relationships, patterns, and crime trends using widgets: (Maps, List, charts, Feature Details, Legend, and Summary widgets etc.) these components allow for total interaction of a web map & its data sources. We will demo how to use maps from AGOL to power widgets in Ops Dashboard and how to use one widget to power another. Additionally, we'll demo how to incorporate Ops dashboard into COMPSTAT meeting.

## **GREATER FIELD OPERATING EFFICIENCIES WITH MOBILE GIS**

Pam Kersh, Esri

**LOUISIANA**

Mobile GIS enables field-based personnel to capture, store, update, manipulate, analyze, and display geographic information. Your field crews need access to the same authoritative data you use in the office, and providing this access reduces errors, boosts productivity, and saves money. This session covers several capabilities to enable success for many workflows such as field mapping, asset inventories, inspections, and incident mapping, just to name a few.

## **COTS TEMPLATES & WEBAPP BUILDER APPS**

Mike Beavers, Esri

**PARAMOUNT**

ArcGIS Solutions deliver Simple, Configurable Off-the-Shelf (COTS) Apps to jumpstart your work. Leverage hundreds of ready-to-use apps to meet your needs, delivering innovation and best practices for your Organization. Come to this Tech Talk and learn the benefits of a COTS Approach which is designed to deliver your geographic information via a variety of clients, from the desktop to Web-based and mobile clients, ensuring that everyone who needs the information has access to it without requiring special software or programming skills.

## ***SESSION III | 4:00PM – 5:00PM***

## **WHAT'S NEW WITH ARCGIS 10.5**

Brig Bowles, Esri

**KING**

What's new in ArcGIS and how it might affect you. ArcGIS 10.5 has arrived. The new release transforms enterprise GIS and makes it easier for you to connect to and analyze many types of distributed data. ArcGIS 10.5 enables you to deploy a complete GIS in your own infrastructure, in the cloud, and as software as a service (SaaS). When you install 10.5, you'll be able to efficiently deliver secure, scalable, data-driven mapping and GIS throughout your organization.

Some highlights:

- A new server technology called ArcGIS Enterprise
- ArcGIS Enterprise Expands Analytic Capabilities
- ArcGIS Pro 1.4, Esri's premiere desktop GIS software
- ArcGIS Online, a complete SaaS mapping and analytics platform
- ArcGIS Named User Levels, Licensing Levels, and the Esri Developer Network (EDN)

## NSIGHTS/OPEN DATA

Katherine Smyth & Mike Beavers, Esri

LOUISIANA

Insights for ArcGIS brings the power of geospatial analytics to everyone. Look at data in a whole new way, and tell your best story. Work with data as maps, charts, and tables, all on one screen. Insights blends spatial and non-spatial data, so you're free to bring in spreadsheets, databases, and ArcGIS data. As part of your ArcGIS Online subscription, you can use ArcGIS Open Data to share your live authoritative open data. Esri-hosted ArcGIS Open Data gives you a quick way to set up public-facing websites where people can easily find and download your open data in a variety of open formats. Come to this session and learn how you can share Live ArcGIS Open Data in minutes!

## 3D GIS

Zena Pelletier, Esri

PARAMOUNT

Come learn how to create, visualize, analyze and communicate in the world of 3D. Whenever you are planning for growth, managing current operations or designing new development in your community, you must be able to understand the project's situation. Esri has the right solutions for you to be successful in your use of 3D. Learn the newest tips and tricks from Esri's 3D suite: ArcGIS Earth, City Engine, ArcGIS Pro and Web Scene Viewer.



OUTBREAK  
SURVEILLANCE  
& CONTROL

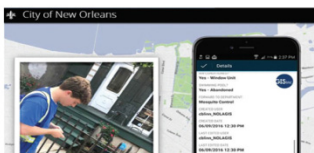
**Location-based decision making.**

Powered by GISinc.



# ZIKA is Here.

New Orleans is Prepared. Are You?



Don't Wait Until It Is Too Late.

Learn how to protect your community now at  
**[zika.gisinc.com](http://zika.gisinc.com)**.



Partner Network  
Platinum



ArcGIS Online  
Specialty



ArcGIS  
Marketplace  
Provider



ArcGIS for  
Local Government  
Specialty

For more information: [health@gisinc.com](mailto:health@gisinc.com) • 205.941.0442 X135

[gisinc.com](http://gisinc.com)

# THE CITY OF BATON ROUGE, PARISH OF EAST BATON ROUGE

## Welcomes South Central Arc User Group



OPEN DATA BR 

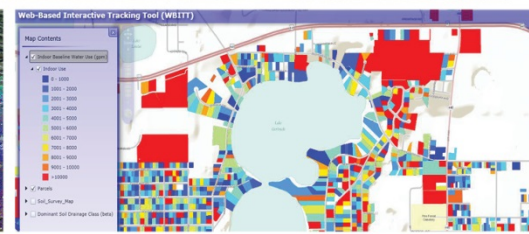
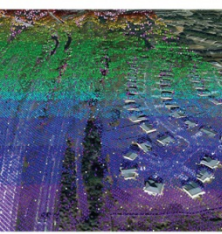
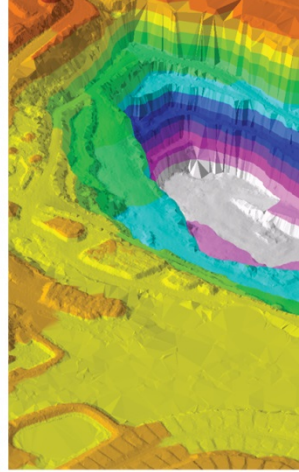
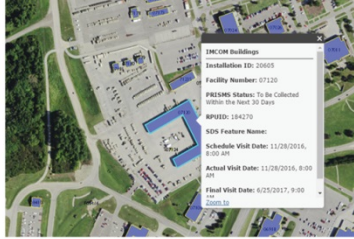


## TURNING SPATIAL DATA INTO KNOWLEDGE

Backed by decades of local experience providing orthoimagery, obliques, planimetrics and lidar data, Fugro's geospatial intelligence solutions support utilities, oil & gas, transportation, and infrastructure and property management. At Fugro, we develop partnerships to support you in realizing your constantly expanding GIS goals.

[www.fugrogeospatial.com](http://www.fugrogeospatial.com)





# POND

## GEOSPATIAL

REMOTE SENSING | GEOGRAPHIC INFORMATION SYSTEMS



Find out more at [www.pondco.com/service/geospatial\\_services](http://www.pondco.com/service/geospatial_services)



# GIS

## FOR TODAY'S PROJECTS

Whether your creating presentation-quality location maps or using advanced methods to discover trends and relationships, GEC can help you leverage the power of GIS tailored to your project scope and needs.



CONTACT: MARK FORSYTH

8282 Goodwood Boulevard  
Baton Rouge, Louisiana 70806

Phone: (225) 612-3000  
Email: [mforsyth@gecinc.com](mailto:mforsyth@gecinc.com)

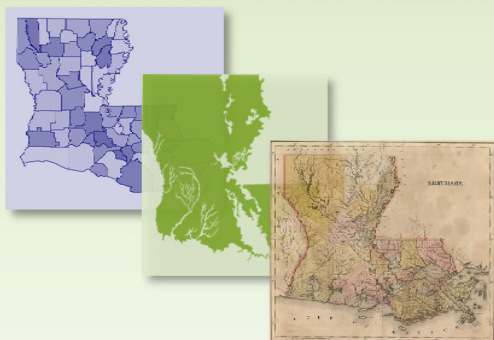
[WWW.GECINC.COM](http://WWW.GECINC.COM)



## Louisiana Chapter of the Urban & Regional Information Systems Association

**Supporting the power of mapping!**

Geographic Information Systems (GIS) and Remote Sensing enable visualization of data, aiding analysis and interpretation of geospatial relationships, trends, and patterns. The mission of the Urban and Regional Information Systems Association (URISA) International is to facilitate the use and integration of information technologies to improve the quality of life in our urban and regional environments.



Historic Map by Henry C. Carey & Isaac Lea in 1822.

### 2017 Membership

*From January 1 To December 31*

**Professional Individual: \$50**

**Student: \$20**

*requires proof of full-time status*

**Corporate/Agency: \$125**

*includes 3 memberships  
and marketing opportunities*

**Join Us for:**  
*Socials  
Lunch & Learns  
Workshops*

**Learn more about LA URISA Online:**

[www.urisa.org/chapter/louisiana-chapter](http://www.urisa.org/chapter/louisiana-chapter)



**Ph: 901 922 5448**

**Mo: 303 919 2971**

**[danr@razor-tek.com](mailto:danr@razor-tek.com)**

**RazorTek Inc 8549 Cordes Cir Suite 102**

**Germantown, TN 38139**

**[www.razor-tek.com](http://www.razor-tek.com)**

**GeoSpatial Data Providers**

**GeoSpatial Development**

**Geospatial Software Providers**

#### Services

Data Conversion (CAD to GIS)

Data Extraction

Georeferencing paper maps

Web Applications / GIS Programming

Map Production

On-site GIS software training

MrSid Processing

Image Processing

#### Products

Aerial Photography

Satellite imagery

LIDAR

Contours

TerraGo software

DTM/DEM

ESRI software

GeoExpress software



BOOK YOUR PROJECT WITH

# AERIAL SERVICES!

Contact Chuck Boyer

281-733-1992

We believe **our solutions** will work for **you!**

➤ What We Can Do For You

We provide a full line of geospatial solutions. From the acquisition of Aerial Imagery and LIDAR data, to ground control survey and final mapping products, ASI delivers your needed solutions.

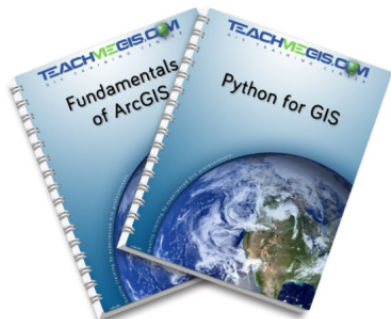
➤ Accuracy. Speed. Innovation.

We make no compromises to the accuracy necessary for your project; we produce data with a rapid turnaround time; and we keep up with the latest technology to ensure we exceed your project expectations.



## TEACHMEGIS.COM

G I S   T R A I N I N G   C E N T E R



Are you ready for **ArcGIS Pro®**?

Is **"Really Learn Python This Time"**  
on your to-do list for 2017?

Would you like to better understand  
**publishing data, managing maps and  
apps and doing analysis with ArcGIS**

**Public classes in Texas. Private classes *anywhere.***

**Stop by our booth. Let's talk!**

<http://www.TeachMeGIS.com>

[info@TeachMeGIS.com](mailto:info@TeachMeGIS.com) • 713-278-7883

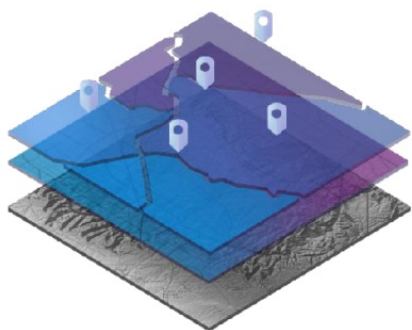
Follow us on Facebook, LinkedIn and Twitter!

*We're looking for partners to host our classes in Louisiana, Mississippi and Oklahoma.  
Stop by our booth if you know someone who might be interested.*



What We Do

We build ArcGIS,  
the world's most  
powerful mapping  
and spatial  
analytics software

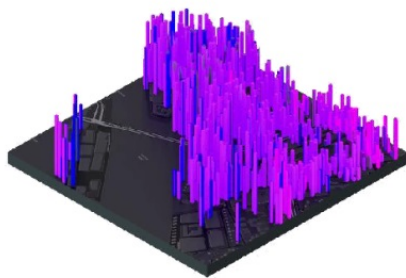


Why We Do It

We believe The  
Science of Where  
can unlock data's  
full potential in  
every organization

Who We Are

We are the global  
market leader in  
GIS and have  
helped customers  
improve results  
since 1969



[www.esri.com](http://www.esri.com)





**Are You  
Contemplating  
Your  
Geospatial  
Future?**

**A GISP Professional  
Certification Can Help!**



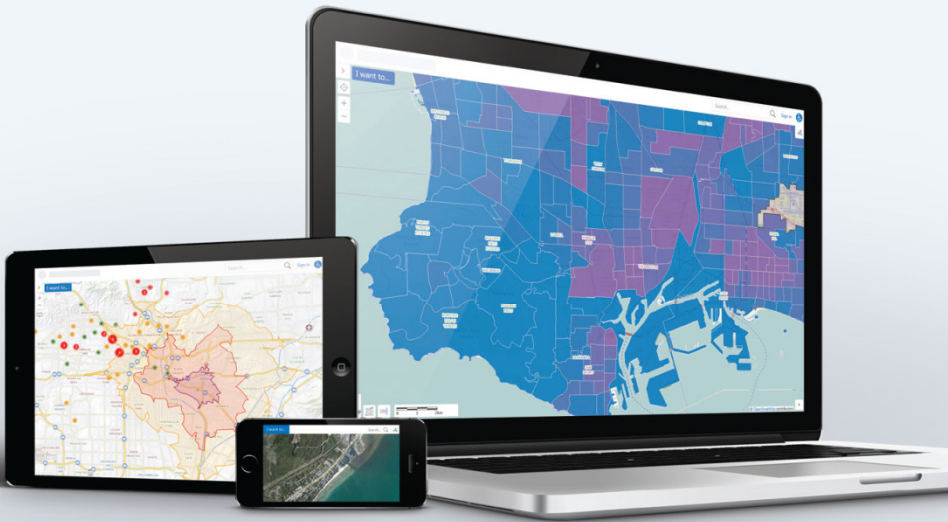
Visit [www.gisci.org](http://www.gisci.org) to find out more.

# Geocortex®

by Latitude Geographics®

## Geocortex Essentials

Build targeted, powerful web mapping applications and maximize what's possible with connected and distributed ArcGIS® technology.



[www.geocortex.com](http://www.geocortex.com)



# GO FURTHER.



**NewEdge**  
SERVICES, LLC

## GIS Services

The employees at **NewEdge** are experts in the ESRI product line as well as other related applications. We have years of experience with everything from GIS data creation and analysis to database design, implementation, and management (Oracle, SQL, ArcSDE) to full scale web and mobile deployments.

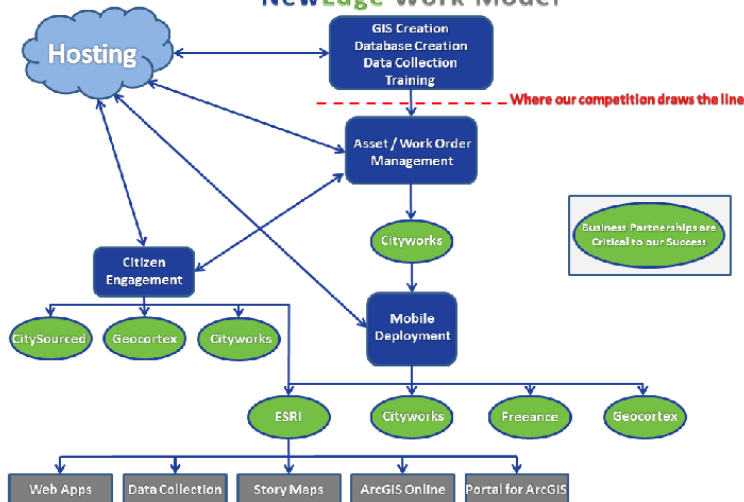
## Asset / Work Management

The **NewEdge** team has successfully implemented Asset / Work Management systems for multiple clients and disciplines throughout the Country. The team has experience in working with various types of data, software, and technologies critical for a successful project.

## Cloud Hosting

**NewEdge** offers clients a new way to do business by giving them access to their GIS and/or Asset / Work Management systems in an online environment accessible 24/7. We manage the hardware, maintenance, and management of the systems for an uncomplicated, affordable solution.

## NewEdge Work Model



## **USER PRESENTATION ABSTRACTS, THURSDAY, MARCH 30**

***SESSION TRACK I | 8:30am - 9:30am***

***Federal Data Initiatives***

### **WHAT'S NEW WITH THE USGS NATIONAL GEOSPATIAL PROGRAM?**

Chris Cretini, Claire DeVaughan, & George Heleine, U.S. Geological Survey

**KING**

As one of the cornerstones of the U.S. Geological Survey's (USGS) National Geospatial Program, The National Map (TNM) is a collaborative effort among the USGS and other Federal, State, and local partners to improve and deliver topographic information for the Nation. It has many uses ranging from recreation to scientific analysis to emergency response. The National Map is easily accessible for display on the Web, as products and services, and as downloadable data. This presentation will provide a wide range of updates on current activities of the USGS National Geospatial Program. Topics will include the 3D Elevation Program (3DEP), National Hydrography Dataset (NHD), The National Map data download functions, TNM services for mobile mapping efforts, US Topo, and TopoView.

### **USAGE OF GIS IN POST-EVENT ANALYSES AT THE NATIONAL WEATHER SERVICE LOWER MISSISSIPPI RIVER FORECAST CENTER**

David Schlotzhauer & Scott Lincoln, National Weather Service Lower Mississippi River Forecast Center

**LOUISIANA**

Heavy thunderstorms occurring over 28-30 April 2014 caused significant flooding in the Pensacola, Florida, and Mobile, Alabama, areas. Researchers collected additional reports of rainfall and flooding impacts from private data networks and social media to augment traditional National Weather Service data sources. As a result of this data collection and spatial analysis of the point and gridded data it was determined that areas near Pensacola received at least 20-in of rainfall. Collection of flash flood impact reports provided evidence that flooding occurred in areas that were previously unreported via the official channels of data collection. These additional reports retrieved through crowd-sourcing were essential to establish an accurate and precise accounting of rainfall magnitude and associated impacts. The spatial analyses used in the investigation will be discussed.



Heavy rainfall from a slow moving low pressure system impacted portions of southeast Louisiana over 11-13 August, 2016. This extreme rainfall caused numerous new record crests along the Amite River at tributaries, beating records set by a previous heavy rainfall event in 1983. Researchers compared the rainfall distribution of the 1983 and 2016 events and the subsequent locations of flood impacts. Spatial analysis indicated that rainfall for the 2016 event was not only more significant, but demonstrated the significance was due to the rain being more focused over the Amite River basin when compared to the 1983 event. It was determined that an isolated area just northeast of Baton Rouge, Louisiana, experienced a 2-day rainfall with only a 0.1% chance of occurring in a given year. The spatial analyses used in the investigation will be discussed.

## **2020 DECENNIAL CENSUS – GEOGRAPHIC PARTNERSHIP OPPORTUNITIES**

Joanna Pitsikoulis, U.S. Census Bureau

**PARAMOUNT**

With innovative changes to design and plans for the 2020 Decennial Census, we are changing the way our geographic partnership programs will operate in 2020. Among the changes, the Local Update of Census Addresses (LUCA) Operation will have one simplified option for 2020: full address list review with census structure coordinates included in the review. The Geographic Support System (GSS) will continue to acquire partner data for updating of the Census's Master Address File, and Topologically Integrated Geographic Encoding and Reference system. The Participant Statistical Areas Program (PSAP) will utilize local data users to review and update statistical areas (tracts, block groups, and census designated places) for 2020 data tabulations. The annual Boundary and Annexation Survey (BAS) will continue to collect the legal boundaries as of January 1 of each year. New tools are under development to allow our partners to participate more efficiently and effectively in these geographic programs.

## **DRAWING FAIR LEGISLATIVE DISTRICTS BASED ON TERRITORIAL COMMUNITIES TO ACHIEVE PARTISAN SYMMETRY**

Robert Winkler, DeSoto County, Mississippi

**PARAMOUNT**

A new measure of partisan symmetry called the Efficiency Gap is enabling judges to begin reining in the partisan gerrymandering that has proliferated in legislative redistricting in recent years. An analysis of

state legislative redistricting maps that resulted from the 2010 Census shows that more than a dozen states have been conducting legislative elections using overtly gerrymandered district maps since the most recent redistricting. This presentation will impart results of a GIS Capstone Project to produce new state legislative redistricting maps for Mississippi and North Carolina that avoid gerrymandering and achieve reasonable partisan symmetry as measured by the Efficiency Gap. These redistricting maps were produced by adhering to the concept of “territorial communities” in lieu of the traditional “communities of interest”, which is often interpreted by states to signify partisan or racial groupings and has been used to pack as many partisans or minorities into a single district as possible.

### ***SESSION TRACK II | 10:30am - 11:30am***

### ***Emergency Response & Local Government Applications***

#### **THE USE OF GIS IN DETERMINING FIRE STATION LOCATIONS**

Ronald Vaughn Sr., Dallas Fire Rescue

**KING**

The City of Dallas is growing in population, each day Dallas Fire Rescue resources are being pushed. Call volumes are up and are putting a strain on departmental resources. Our men and women are answering more calls than they were only 5 years ago. Neighborhoods change and they type of calls in those areas have changed. In this presentation we look at how Dallas Fire Rescue uses GIS to determine the location of future fire stations.

#### **BRPSCOP: REAL-TIME POLICING USING GIS**

Sgt. Neal Noel, Baton Rouge Police Department

Brandon Jumonville & Warren Kron, City of Baton Rouge/ Parish of East Baton Rouge

**KING**

The Baton Rouge Public Safety Common Operational Platform (PSCOP) is an interactive mapping application utilizing many facets of GIS technology. It provides users access to near-real time data and other information for situational awareness, coordination, and analytics in support of daily operations and emergency management. While the platform is being piloted by the Baton Rouge Police Department, it is intended to serve all public safety agencies in East Baton Rouge Parish. PSCOP addresses the need for efficient and accurate means to convey

critical information. The backbone of PSCOP involves a data feed which displays police vehicle locations and current crime and traffic incidents. A new addition to PSCOP, termed Risk Terrain Modeling, is currently under development. RTM is a tool for empirically identifying which environmental features influence illegal behaviors. The modelling outputs will be used to develop targeted risk-based strategies for preventing crime in Baton Rouge.

### **A DARK AND STORMY NIGHT –A GIS SURVIVOR STORY**

Olesya Powers, City of Mesquite

**LOUISIANA**

December 26th, 2015 several supercell thunderstorms resulted in an outbreak of 12 tornadoes in North and Central Texas. The deadliest of these, categorized as an EF-4 tornado, cut a path starting from the town of Sunnyvale, the city of Garland, and ending just outside of the city of Rowlett. After surviving the Garland portion of the tornado, I was dispatched to the city of Rowlett with TxEGRT as a GIS responder. It's not often that a GIS professional is involved in emergency situations to such a degree. This presentation hopes to shed light on my unique experience as both survivor & responder, and the many challenges I faced.

### **GIS & REMOTE SENSING TOOLS SUPPORT COMMERCIAL SUPPLY CHAIN**

Wendi Couvillion French, Wyndston Services

Stephen French & Adam Perschall, Acadian Millwork & Supply

Lori Cunningham & Dion O Reilly, AECOM

**LOUISIANA**

Just as Natural Disasters are rocky roads for public emergency response services, but not all emergency response services are borne exclusively in the public sector or completely covered by reimbursable funds. Within Louisiana several private industries carry a huge response load and have to commercialize services where recovery funds fall short. It is a natural extension to bring GIS and business analytical services into these areas where risk overwhelms. Drawing from oil and gas pipeline & emergency response experiences, GIS tools have been calibrated for a public/private partnership to support construction sub-contractors that are key to the redevelopment of the devastated areas and move toward easy facility management services. This presentation will cover tools built upon the readily available public GIS data sets in Southeast Louisiana (around the lake – St Tammany, Tangipahoa, Livingston, East

Baton Rouge, West Baton Rouge, Ascension, Terrebonne, Lafourche Jefferson and Orleans).

## **USING WEB APPBUILDER FOR ARCGIS ONLINE TO DEPLOY WEB APPLICATIONS FOR DISASTER FELID ASSESSMENTS**

Chelsea Core, GISP & Doug Albert, GISP, City of New Orleans

**PARAMOUNT**

The City of New Orleans uses ArcGIS Online and ArcGIS Server to deploy web mapping applications to disseminate information to the public and collect vital data in disaster situations, like the recent tornado that affected New Orleans East this past February. Using Web AppBuilder for ArcGIS Online, the city deployed an out-of-the box mobile application for collecting tarp distribution. This type of solution provides various City departments and organizations the ability to visualize areas of need and gather information quickly in order to deploy necessary resources.

## **GIS SYNERGY IN A WEB-ENABLED WORLD**

Caroline DeMay & Alison Kuemmel, City of New Orleans **PARAMOUNT**

As more and more government and private entities move further to web enabled geo-spatial based solutions, the relationship between the GIS professional and the non-GIS employee becomes even more critical than before. With this evolution, the role of the GIS analyst has become more focused on creating an environment with streamlined workflows to present the most up-to-date data via replication and creating web applications for the subject matter expert (the non GIS professional) to edit data the way they want to see it. This in turn frees up the GIS professional from doing simple data creation and maintenance, allowing for more time to focus on heavier spatial analytics and data/ workflow management. The City of Orleans is currently using and developing several ArcGIS Online applications that creates this symbiotic relationship ultimately ensuring data provided to citizens is done in the most efficient and accurate manner.

# You Can Depend On Cityworks

The GIS-centric solution more organizations choose  
for maintaining smart, safe, and resilient communities.

## BECAUSE YOUR WORLD DEPENDS ON YOU

# Cityworks®

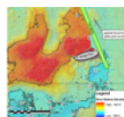
Empowering GIS®  
FOR PUBLIC ASSET MANAGEMENT



[www.cityworks.com](http://www.cityworks.com) | 801.523.2751



GIS and Mapping Services



## Environmental Science Services, Inc.

The foundation of Environmental Science Services, Inc. (**Es<sup>2</sup>**) was built on high-end geospatial mapping, analysis, and data presentation and serves as the core of our business today. With two certified GIS Professionals on staff, each with over 20 years of GIS experience, **Es<sup>2</sup>** is able to provide a suite of GIS services. As an Esri Silver Partner, **Es<sup>2</sup>** has access to a wealth of resources to provide GIS and mapping services for a variety of applications including local governments, emergency response, environmental assessments, and engineering projects.

### ArcGIS for Local Governments



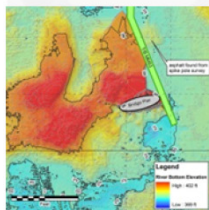
- Local Government Information Model
- Focused Maps and Apps Leveraging Geographic Information
- Share Data Throughout All Groups and Departments

### Field Data Collection



- Mobile Smart Device Mapping
- High-Accuracy, Survey-Grade GPS Data Collection
- Real-Time Data Transmission Using Cellular Connected Devices

### Spatial and 3D Analysis



- Land Loss, Habitat Change and Habitat Mapping
- 3D Visualization
- Cross-Sections and Volume Calculations
- Environmental Analysis

1027 North Range Avenue

Denham Springs, Louisiana 70726

225.927.7171 (24 hrs)  
www.es2-inc.com



ArcGIS Online  
Specialty



ArcGIS for  
Local Government  
Specialty



esri

Partner Network  
Silver

**SPATIAL CONFIGURATION TRENDS IN COASTAL LOUISIANA FROM 1985 TO 2010**

Holly J. Beck, U.S. Geological Survey

**KING**

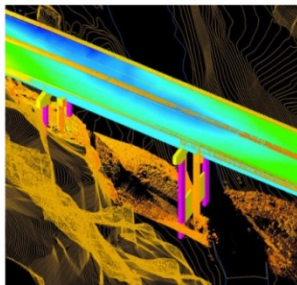
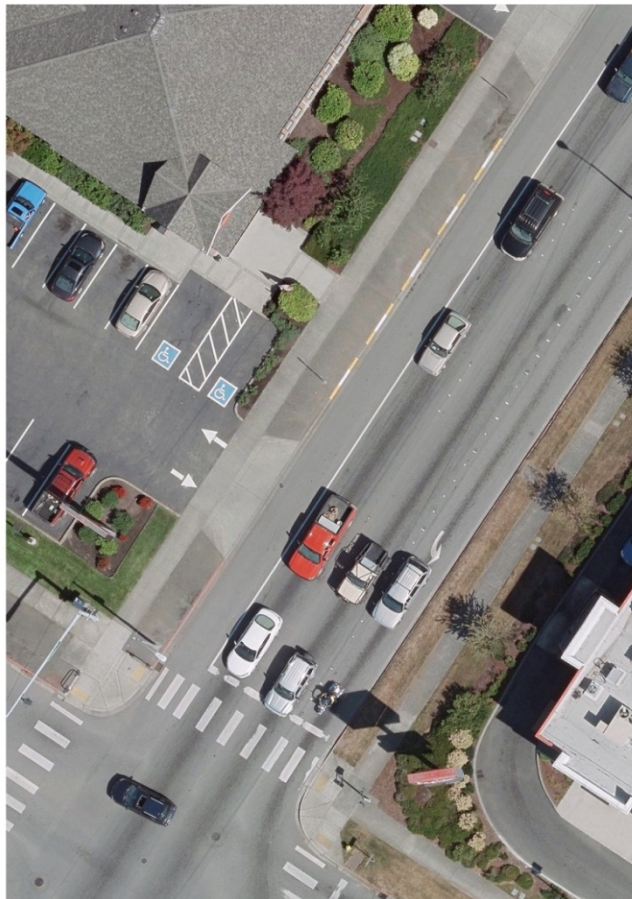
From 1932 to 2010, coastal Louisiana wetlands experienced a net loss of 4,877 km<sup>2</sup>. As the area of these wetlands has changed, so too has the spatial configuration of the landscape. This study examined the spatial and temporal variability of trajectories of landscape configuration and the relation of those patterns to the trajectories of land change in wetlands during a 1985-2010 observation period. Spatial configuration was quantified using multi-temporal satellite imagery and an aggregation index (AI). The results indicate that Louisiana experienced a reduction in the AI of coastal wetlands of 1.07%. In general, forested wetland and fresh marsh displayed the highest aggregation and stability. Intermediate, brackish, and saline marsh all experienced disaggregation during the time period, with increasing severity of disaggregation along an increasing salinity gradient. Finally, a correlation ( $r^2=0.5562$ ) was found between AI and the land change rate for the subsequent period, indicating that fragmentation can increase the vulnerability of wetlands to further wetland loss.

**LAND AREA CHANGE IN COASTAL LOUISIANA (1932 TO 2015)**

Brady R. Couvillion, U.S. Geological Survey

**KING**

Louisiana has recently experienced more coastal wetland loss than all other states in the contiguous United States combined. Historical surveys, aerial, and satellite data were used to quantify landscape changes from 1932-2015. Analyses show that coastal Louisiana has experienced a net change in land area of approximately -4,833 km<sup>2</sup> from 1932-2015. A penalized regression spline technique was used to determine the model that best fit the data. Trend analyses from model fits suggest that coast wide rates of wetland change have varied from 83.5 km<sup>2</sup>/year to - 28.01 km<sup>2</sup>/year.



# ACCESSGEOGRAPHIC

IMAGERY - MAPPING - LIDAR - GIS

.....

**ACCESS GEOGRAPHIC, LLC** TAKES PRIDE IN SERVING COMMUNITIES AND INDUSTRY ACROSS NORTH AMERICA. WHILE EVERY PROJECT IS DIFFERENT, OUR COMMITMENT TO FINDING THE MOST **DIRECT** AND **COST-EFFECTIVE** GEOSPATIAL SOLUTION STAYS THE SAME. WE HONESTLY ENJOY WHAT WE DO, AND YOU'LL SEE IT IN OUR **RESULTS**.

.....

[WWW.ACCESSGEOGRAPHIC.COM](http://WWW.ACCESSGEOGRAPHIC.COM)

(480) 709-2710



## **USING GIS TO CALCULATE IRRIGATED CROP AREAS AND WATER USE IN LOUISIANA 2004-2016**

Krishna Paudel, Huizhen Niu & Dependra Bhatta, Louisiana State University

**LOUISIANA**

Commodity price rise and increased weather variability in the last decade or so have motivated farmers to expand irrigated crop acreage in Louisiana. At the same time, a relatively inexpensive option of using submersible electric wells has allowed farmers to dig small wells to meet crop irrigation needs. These multitudes of reasons have caused increased water withdrawal in many Louisiana aquifers. We use a GIS-based approach to calculate total irrigated crop acreage, calibrate it based on the USDA Farm Service Agency crop acreage data. We then used these information and weather data to estimate irrigated crop acreage and water withdrawal from Louisiana aquifers. We reconcile the difference in total water withdrawal between our approach and real irrigation acre data compiled by the USDA Farm Service Agency to arrive at better predictions for total irrigation water extraction in Louisiana.

## **USING GIS AND REMOTE SENSING TO MAP THE HABITATS OF PROTECTED AREA; OROUG BANI M'ARAD, SAUDI ARABIA**

Ali A. Aldosari PhD, King Saud University

**LOUISIANA**

Ecosystems are being increasingly degraded worldwide. Protected areas are one of the natural landscapes/resources and managing these protected areas is very important for conserving ecosystems local and or endemic species. To halt the global and local decline of biodiversity, habitat sand its boundary need to be mapped and monitored so that their condition can be assessed and suitable policies put in place to improve the situation. Uruq Bani Ma'arid is a desert protected area (12787 square kilometres) in Saudi Arabia. It is situated along the western edge of Ar-Rub' al-Khali (the Empty Quarter Desert), which is widely considered the largest sand desert on Earth. The Uruq Bani Ma'arid contains greater biological diversity than any other part of the Empty Quarter, with vegetated valleys, gravel plains, and inter-dune corridors. It is the last place that the Arabian Oryx is reliably reported to have been observed in the wild (1979), and is now the focus of an intensive and successful reintroduction program for Arabian Oryx, Reem and Idmi Gazellas etc. This study will apply GIS and remotely sensed data to identify the characteristics of habitats elements in the protected area and to assess new potential habitats of its wildlife. Furthermore

the results of indicators and historical satellite data will be discussed to remap the boundary of Uruq Bani Ma'arid.

## **PIPELINE GPS DATA COLLECTION**

Joseph Nicolosi, DOW Chemical Mines Storage and Pipping

**PARAMOUNT**

A review of GPS data collection and how the data is collected and used by field technicians, migrated into the enterprise GIS then used in risk models and by end users.

A brief history

- Why did we need high accuracy GPS?

TerraSync - work flows, pro and cons.

- Pathfinder
- Geo6000/7x

TerraFlex - work flows, pro and cons.

- Geo6000/7x
- Smart Phone
  - R1, R2

## **A GIS-BASED APPROACH TO ENVIRONMENTAL JUSTICE IMPACT ASSESSMENTS**

Alex Couch, ENERCON

**PARAMOUNT**

Environmental Justice (EJ) is an important requirement for all NEPA - based environmental reports (ER) and impact statements (EIS). Since 1994, when President Clinton signed Executive Order 12898 directing each Federal Agency to consider EJ by identifying disproportionate and adverse health or environmental effects of its activities on minority and low-income populations, government agencies at all levels have worked to incorporate EJ impact reviews into their permitting processes. By using GIS and publicly available data, applicants can identify the locations of potentially sensitive populations and evaluate potential impact pathways in a geospatial format that allows both applicants and regulators to fully assess potential project impacts. This in turn allows for the identification of mitigation measures that reduce potential impacts and also reduces the risk for contentions. This presentation describes this geospatial approach to EJ that has successfully combined socioeconomic impact analyses with a geographic component in an effective, repeatable and defensible process.

eGIS Associates, Inc. is focused on providing efficient and cost effective Geospatial Solutions that meet the growing needs of public and private sector enterprises. Our mission is to help you consume the "Power of Place" with current technology standards and [Applied Spatial Intelligence](#)®.

eGIS offers a wealth of professional products and services including:

- **Enterprise GIS/IT Implementation**
  - Esri
  - Hexagon
  - Microsoft
- **Geodatabase Design, Implementation & Conversion**
- **Desktop, Web & Mobile Application Development**
- **Field-to-Office Automation**
  - Leica
  - Esri
  - Trimble
- **Business Systems Integration**
- **GIS/IT Training and Support**
  - Esri
  - Hexagon ERDAS Imagine & Apollo
  - Leica GPS/GNSS Solutions
  - Microsoft

eGIS is committed to customer satisfaction – [Relationships Matter](#). Whether you need advice on your project or are looking for a relevant product or just have a technical question, we can help. Visit our website at:

[www.egisassociates.com](http://www.egisassociates.com)

**esri**Partner Network  
Silver**HEXAGON**  
GEOSPATIAL  
Technology Partner

**SESSION TRACK IV | 2:15pm - 3:15pm**  
**Database Development**

**LA DOTD DATA AND MAP SERVICES**

Brian, Reigh, Louisiana Department of Transportation

**KING**

The Louisiana Department of Transportation's plan to fulfill LARS 48:36 by developing, centralizing, and publishing topographic mapping data. The Louisiana Department of Transportation and Development's current accomplishments and services available.

**SUCCESSFUL FIELD DATA COLLECTION USING COLLECTOR FOR ARCGIS AND SURVEY 123**

Jennifer Harrison, TeachMeGIS

**KING**

Collector for ArcGIS and Survey 123 are great tools for field data collection. While at first glance both applications seem quite easy to use, there are some details that are very important if you want to get your field data collection right the first time out. For example, it is very important to understand how to properly prepare data for use in Collector for ArcGIS, including using Domains to create pick lists and understanding editable feature services. There are a lot of nuances for creating the Survey123 forms, such as the syntax to use for creating cascading questions in your survey. This seminar gives you an introduction to both great apps.

**GIS AND CITYWORKS MOBILE ASSET MANAGEMENT**

Blake Mize, Cityworks by Azteca Systems

**LOUISIANA**

Cityworks is working to meet the ever growing needs as it relates to providing advanced GIS - Centric mobile applications for city's, county's, and other local government municipalities around the world. Cityworks Mobile and Cityworks Respond are work management solutions for employees in the field too efficiently communicate with all parties. As a platinum business partner of ESRI, Cityworks Mobile products focus on GIS and asset management services (AMS) along with Land Management (PLL).

## **THE BENEFITS OF A GIS-BASED ROUTE AND SITE SELECTION**

Rachel Turney-Work, ENERCON

**LOUISIANA**

A well-executed and documented route selection can be the difference between a project's success and failure, particularly if the project entails a NEPA or FERC (Resource Report 10) assessment or a state siting permit is required. One solution to help ensure your project's success is a GIS-based routing process that includes development of a Siting Plan and a quantitative, systematic down-select process that is based on a least cost path algorithm. This presentation will define the major components of a siting plan, including the suggested stakeholder involvement into the Siting Team, selection of criteria, definition of values and weights, and common routing scenarios, as well as outline the types of projects best suited for this siting methodology. Perhaps most importantly, we will outline the wide reaching benefits of this GIS-based process that extends beyond the route selection for the entire life of the project.

## **HOW TO RUN A CHEAP SHOP!**

Brenda Fennel, GISP, City of Paris Texas

**PARAMOUNT**

Would you like to know how to run a small GIS shop for 2k a year? I will show how using: One Basic Desktop License, One Standard Desktop License, unlimited ArcGIS Desktop Explorer Clients, ArcGIS On-Line Fully Hosted Organization, ESRI Application Templates, & Collector and Explorer APPS. The City of Paris Texas has very limited resources for both funding and staff. However, by taking advantage of the ESRI hosted organization available with paid annual maintenance, the city is providing both internal & external customers with online data and map products and are collaborating with other departments for data collection and field verification tasks.

## **USING ADVANCED CARTOGRAPHIC TECHNIQUES TO CREATE AN AWARD WINNING MAP**

Rebecca Broadbent, Structure Development

**PARAMOUNT**

Have you ever wondered what it takes to make an award-winning map? Many techniques consist of small touches that, when put together, can make your map a professional product. This presentation will discuss advanced cartographic techniques, including where to look for design

ideas, using custom colors and fonts, experimenting with unique symbologies, and using specialized tool sets to make a good map better. Learn how to go beyond the defaults in ArcMap and see how many small touches can result in an award winning map. A case study about the creation of the award winning Geo-Genealogy of England and Wales surnames map will be presented.



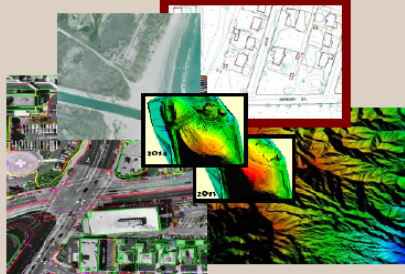
United Geo Technologies, LLC

Patsy Ingram  
President

[pigram@unitedgeotech.com](mailto:pigram@unitedgeotech.com)

David Zuniga  
Vice President

[dzuniga@unitedgeotech.com](mailto:dzuniga@unitedgeotech.com)



**Specializing in Digital  
Photogrammetric Mapping,  
Orthophotography, LiDAR  
and Geographic  
Information Systems (GIS)**

**United Geo Technologies LLC**

*A small woman-owned business*

7715 Mainland, Suite 110

San Antonio, Texas 78250

Phone: 210.684.2147

Fax: 210.764-5022

[www.unitedgeotech.com](http://www.unitedgeotech.com)



Power Portfolio 2016

**STREAMLINED. DYNAMIC. MOBILE.**



## **EXHIBITOR BIOGRAPHIES**

### **PLATINUM**

Western Data Systems is an authorized Trimble Dealer specializing in the sales, rentals, training and technical support for



Survey, Mapping, Marine, Utility, Environmental, Fleet Management and Seismic Industries. WDS was founded in 1982 and since then has concentrated on supplying top of the line Spatial Measurement and GPS related products in Texas and Oklahoma for sales and worldwide for rentals. We offer several peripheral items such as pipeline locators, ground penetrating radars, laser rangefinders, laser scanners, GPS cameras, barcoders, tablets and much more. WDS has two full Survey Supply stores in Texas and delivers wood, stakes, flags and any supply needed daily. With our extensive rental fleet we have more than enough gear to get you through any job and can ship worldwide. Our Technical Support staff is comprised of a staff that has worked in the field and can help out with any support need you have. We offer free support to both our rental and sales customers. WDS also manages the largest private VRS Network in the world. This network is available to both Survey and Mapping communities. We are adding base stations continuously and the amount of users grows each year.



For a full line of our products and Services please visit our website at [www.wds-us.com](http://www.wds-us.com). With six offices across Texas and Oklahoma you are never too far from The Experts!

### **GOLD**



This year, Baton Rouge celebrates its bicentennial since being incorporated by the Louisiana Legislature. Originally discovered in 1699 by French explorer D'Iberville, Baton Rouge is rich in history. From a "Red Stick" marking the boundary between two Native American hunting grounds to an enterprise

GIS program, maps have always been an important part of our city. French, English, Spanish, and American colonists plotted boundaries and

points of interest on their maps just as city leaders do today in managing the growth and development of Baton Rouge. Since 1993, the East Baton Rouge Parish GIS Program (eBRGIS) has matured from just a basemap to a nationally-recognized program providing mission critical services to support government operations, as well as key decision-making tools and applications for all residents and stakeholders. Enjoy your stay in Louisiana's capital city! And, while you are here, try one of 200 things to do at: <http://www.batonrouge200.com>.



## Cityworks®

Since 1996, Cityworks® has been helping organizations maintain smart, safe, and resilient communities by streamlining the care of public infrastructure, permitting, and property. Built exclusively on Esri® ArcGIS® technology, Cityworks' Web GIS-centric™ platform combines the authoritative asset inventory in a geodatabase with business process applications for managing workflow, scheduling resources, and prioritizing activities. Time-tested and proven, Cityworks is Empowering GIS® at more than 600 organizations around the world, saving time and money while improving operational efficiencies.



eGIS Associates, Inc. is focused on providing efficient and cost effective Geospatial Solutions that meet the growing needs of public and private sector enterprises. Our mission is to help you consume the "Power of Place" with current technology standards and **Applied Spatial Intelligence**®.

eGIS offers a wealth of professional products and services including:

- Enterprise GIS Implementation
- Geodatabase Design
- Web & Mobile Application Development
- Field-to-Office Automation
- Business Systems Integration
- Geospatial Training and Support



eGIS is committed to customer satisfaction – **Relationships Matter**. Whether you need advice on your project or are looking for a relevant product or just have a technical question eGIS Associates stands ready to assist.





Environmental Science Services, Inc. (Es<sup>2</sup>) is a small business started in 1996 and was founded on providing high-end geospatial products and services to our clients. Es<sup>2</sup> is also a registered engineering firm in Louisiana, Texas, and Florida and specializes in high-end GIS, GPS, and mapping services to support various environmental and engineering projects. For industrial clients, Es<sup>2</sup> uses GIS to support projects such as site-remediation, oil spill environmental assessments, and general regulatory compliance. For public sector clients, Es<sup>2</sup> provides GIS consulting and field services to aid in the transition from disconnected desktop environments to enterprise systems, including server, web, and mobile. Es<sup>2</sup> also performs various engineering services, such as flood elevation certificates, pipeline repair documentation and inventory, and utilities data collection.



Since 2005, Geospatial Training Services has provided high quality training opportunities for GIS professionals. Our training events are presented in a number of different formats including traditional classroom, live-online, self-paced online with access to the instructor, and self-paced. Our goal is to provide you with the training materials you need in the format you want.



Located in Chesterfield, Missouri, Surdex Corporation is recognized as one of the top geospatial data providers in the United States. We supply data to federal, state, county and municipal governments as well as private engineering firms. We maintain a staff of almost 100 employees including pilots, computer specialists, imaging specialists, LiDAR specialists, Registered Land Surveyors, and Certified Photogrammetrists. Classified as a “photogrammetric engineering firm,” Surdex owns a fleet of 10 aircraft and sophisticated digital sensors used to acquire imagery and LiDAR elevation data to develop digital orthoimagery. We undertake projects ranging in size from a single community to an entire state, and our production capacity enables to us to manage numerous concurrent projects – and to deliver a quality product on spec and on schedule.



## SILVER



Aerial Services, Inc. (ASI) is an integrated team of professionals providing premier Aerial Acquisition, Digital Ortho, Vector Mapping, Terrain & LiDAR services to government, utilities, engineers, and other geospatial clients. Based in the Iowa heartland for nearly 50 years, Aerial

Services' strong work ethic, cutting-edge technology, and experienced staff combine to harness the power of geographic information and provide solutions you need.

[www.AerialServicesInc.com](http://www.AerialServicesInc.com)



**esri**

**THE  
SCIENCE  
OF  
WHERE™**

Esri's geographic Information system (GIS) technology has given clients the power to think and plan geographically for over 45 years. Used today in more than 350,000 organizations worldwide, GIS helps cities, governments, universities, and Fortune 500 companies save money, lives, and our environment. GIS helps you understand and question data in ways that reveal relationships, patterns, and trends. So whether you are transporting ethanol or studying landslides, you can use GIS to solve problems and make better decisions, because a GIS enables you to look at your valuable data in a way that is quickly understood and easily shared. Esri supports the implementation of GIS technology on the desktop, servers, online services, and mobile devices.



### Esri – The Science of Where

- We pioneer problem solving using GIS
- We build ArcGIS, the world's most powerful mapping and spatial analytics software.
- ArcGIS applies The Science of Where to connect everyone, everywhere through a common visual language.
- It combines mapping and analytics to reveal deeper insight into data.
- We believe The Science of Where can unlock data's full potential in every organization
- We are the global market leader in GIS and have helped customers improve results since 1969



Latitude Geographics Group  
Ltd. is a Geographic  
Information Systems (GIS)  
software development and

services company. Latitude's Geocortex products and solutions address common GIS application development challenges organizations encounter when deploying Esri web GIS technology. They offer pragmatic solutions to improve developer productivity, help solve complex business problems, and enable a better user experience.



Founded in 1965, Pond is an international Architecture, Engineering, Planning and Construction firm that

serves municipality, state, and federal governments, and private clients worldwide. Pond has built a solid reputation for excellence in quality and client satisfaction by providing exceptional Geospatial Services. Our geospatial development team consists of highly-trained, specialized, experienced and responsive professionals including multiple GISP-accredited individuals and Project Managers. Pond Geospatial integrates the use of the latest Remote Sensing, Global Positioning Systems and Geographic Information Systems (GIS) Techniques to acquire and develop vertical and horizontal infrastructure, imagery and elevation, and related socioeconomic datasets for all projects. These data sources are standardized and incorporated into spatial analysis, business intelligence and stand-alone application systems to best support, grow and visualize our clients' future goals.



# STANDARD

## ACCESSGEOGRAPHIC

IMAGERY - LIDAR - MAPPING - GIS - HOSTING

Access Geographic serves local government, industry and utilities across

Oklahoma, Texas, Louisiana and Mississippi by using innovative geospatial technologies without losing sight that care and detailed craftsmanship still drives quality results. The AGL team is passionate about working with geography, and is continually inspired to make it an accessible and useful resource through discipline, creativity and respect for our clients. From aerial mapping to terrestrial LiDAR, Access Geographic works hard to find a solid solution for your geospatial goals and delivers products that you can trust.



Detailed, accurate and up-to-date information about the real world environment is key to the efficient management of your assets and resources. Fugro's solutions deliver geospatial knowledge that enables you to dramatically improve business routines and performance. Our global acquisition-

to-production resources are combined with rigorous quality management procedures solutions that meet customer needs for accurate and efficient geospatial information. We use our expertise and industry specific knowledge to deliver geospatial intelligence on the changing environment for use in transportation, electric utilities, oil & gas, infrastructure development and property management. Working with customers, we continue to develop local partnerships to support constantly expanding GIS solutions.



G.E.C., Inc. provides integrated planning and design services for public and private clients nationwide. We provide a wide range of expertise for

applications to land planning, water resources, and transportation projects. . Our expertise focuses on the integration of geospatial technologies with work conducted by our hydrologic and hydraulic engineers, geologists, environmental scientists, and economists. Services are provided separately or in an integrated fashion, depending on client needs. Our commitment to our clients is to produce high-

quality products on time and within budget; keeping with the special needs of our customers so that their objectives can be accomplished in an efficient and professional manner. With its headquarters in Baton Rouge, Louisiana and offices in Lafayette and Metairie, Louisiana, as well as West Palm Beach, Florida, and Biloxi, Mississippi; GEC has a staff of more than 200 professionals ready and able to support a wide variety of client needs.



The GIS Certification Institute (GISCI) is a tax-exempt not-for-profit organization that provides the geographic information systems (GIS) community with an internationally-recognized, complete certification program. GISCI offers participants from the first early years on the job until retirement, a method of developing value for professionals and employers in the GIS profession. There are currently over 8000 active GISPs located throughout the world.

The current GISP Certification process consists of a Portfolio Application that describes an applicant's background in Ethics, Education, Experience, and Contributions to the Profession as well as the GISCI Geospatial Core Technical Knowledge Exam added in 2015.

Selected GISPs performed groundbreaking work in the process of creating the Exam informed by both the Geospatial Technical Competency Model (GTCM) approved by the Department of Labor in 2010 and the GIS&T Body of Knowledge developed by UCGIS.



GISi is an award-winning GIS professional services firm located in Birmingham, Ala., with offices throughout the United States. GISi has a passion for delivering customer driven location technology solutions to federal, state and local governments, and commercial organizations.





Maps have always been at the heart of HERE's mission. Only the maps we are creating today are very different from those we grew up with. Powered by our leading location cloud and enriched with dynamic data, maps from HERE are becoming increasingly real time capturing the changing world like never before. We believe they will play a critical role

in improving mobility for people and enterprises, making driving safer and more enjoyable, and reducing emissions. And now YOU can help make this map even better. Visit [www.here.com](http://www.here.com) or contact us at [uscommunity@here.com](mailto:uscommunity@here.com) for more details.



**HEXAGON**  
GEOSPATIAL

Hexagon Geospatial is known globally as a maker of leading-edge technology, enabling our customers to easily transform their data into actionable

information, shortening the lifecycle from the moment of change to action. Hexagon Geospatial provides software products and platforms to customers through direct sales, channel partners, and Hexagon businesses.



LaURISA is the State of Louisiana Chapter of the international GIS organization URISA. The vision of URISA is to connect people and resources in the

geospatial community. URISA is a multi-disciplinary geospatial organization that provides professional education and training, a vibrant and connected community, advocacy for geospatial challenges and issues, and essential resources. URISA fosters excellence in GIS and engages geospatial professionals throughout their careers. LaURISA continues that mission in Louisiana by providing numerous GIS events throughout the year, including Lunch and Learns, Workshops, and Socials.





**NewEdge** Services, LLC is focused on implementing GIS, Asset/Work Management Systems, Cloud Hosting, and Related Services. **NewEdge** provides clients with turnkey solutions for a wide variety of needs and can provide additional resources for clients on specific projects. Our experience demonstrates our

abilities, which include:

- Database design, implementation, and management (Oracle, SQL, ArcSDE)
- Custom web and mobile applications
- Hosted cloud solutions
- GIS data creation
- GIS analysis
- Hard copy map/plan inventory, cataloging, and georeferencing
- System integration
- Asset/Work management system implementation and integration
- Permitting system implementation and integration
- User training and support
- And much more...

**NewEdge** has strategically aligned with multiple business partners to provide our clients with implementation services for products that are leaders in their perspective fields. Our long standing business partner relationships include:

- Amazon Web Services
- CitySourced
- Cityworks
- Esri
- Freeance
- Geocortex by Latitude Geographics

The **NewEdge** team has all of the knowledge, experience and expertise needed to successfully implement all GIS related projects. Our team has been working together since 2008 and has over **100 years** of combined experience in working with multiple types of data, software, and technologies that will be critical for a successful project.





RazorTek Inc. is a privately held GIS and Remote Sensing consulting firm specializing in design, development and automation of complex systems for spatial data display and analysis.

Established in 2002, RazorTek serves both the private and public sectors in providing services and technology assistance. We also offer onsite GIS training, data conversion , data development, data collection, Georeferencing, image processing and feature extraction. RazorTek is an authorized reseller for ESRI, LizardTech (GeoExpress), Terrago and Planetlabs (satellite imagery) including a provider for satellite imagery from Digital Globe and a provider for aerial photography from 1inch to 2 feet plus LiDAR collects if needed.

RazorTek is certified by the SBA as an 8(a) company and certified as a DBE (Disadvantage Business Enterprise) by the Tennessee Department of Transportation in addition we are certified as a MBE(Minority Business Enterprise) by the State of Tennessee and the NCTRA (North Central Texas Regional Certification Agency) in Texas.

RazorTek is now listed on the Texas DIR contract (DIR-TSO-3471) to provide GIS products and services to the state of Texas.

If more information is required for RazorTek capabilities please contact us by email ([danr@razor-tek.com](mailto:danr@razor-tek.com)) or call us at 901-922--5448.



TeachMeGIS is an ESRI Business Partner who has been helping professionals

across the globe get up and running with GIS for the past 16 years. Staffed with industry professionals who have extensive GIS and training experience, TeachMeGIS offers high-quality GIS training courses that can be taught on-site at your facility or in our training center in Houston, Texas. Our curriculum team can customize the classes for you, as well. Our professional GIS consulting staff are available for short- or long-term projects. Please give us a call if you need help meeting your company's GIS goals this year.







United Geo Technologies, LLC, your geospatial service provider, offers a wide range of services such as photogrammetry, orthophotography, parcel mapping, and geographic information systems. This small, woman owned business has extensive experience in the geospatial disciplines and our personnel include a Certified Photogrammetrist. UGT's personnel have extensive experience in the following areas:

- *Aerial Imagery Acquisition (both analog and digital)*
- *Airborne GPS*
- *Aerial Film Scanning*
- *CAD (MicroStation and AutoCAD)*
- *Contour Generation*
- *Digital Aerial Triangulation*
- *Digital Elevation Models (DEM)*
- *Digital Terrain Models (DTM)*
- *Digital Orthophotography (TIFF)*
- *Image Compression (MrSID, JPEG2000, ECW)*
- *LiDAR DTM and Contour Integration*
- *Parcel Mapping*
- *Geographic Information Services (ESRI)*
- *Plan and Profile*
- *Planimetric Feature Extraction*
- *UAV / Drone Image Processing*
- *Volume Computations*





# **Map Gallery Ballot**

**Please vote for your favorite map**

**Number of Map \_\_\_\_\_**

**Vote, tear off, and submit to Map Ballot Box at  
Registration Desk no later than  
Thursday, March 30 by 2pm**



**Official Baton Rouge  
Visitor's Guide**



**Downtown  
& Greater Area  
Baton Rouge Maps**

## GISP CHECKLIST

Description	Classification	Credit	ReCert Credit	Credits Earned
<b>2½ Day Regional SCAUG Conference in Baton Rouge, LA (20 hour)</b>				
Attendee (0.1 x # of days attended)	EDU	0.25	3.33	
Presenter (1 point per instance)	CON	1	3	
Poster Presenter (1 point per instance)	CON	1	3	
Poster Award Winner	CON	2	6	
<b>1/2 Day Training (4 hour) (Training Certificate required for documentation credit.)</b>				
High Accuracy Mobile Data Collection	EDU	0.1	0.67	
1/2 Day Training Instructor :	EDU	3	9	
<b>1 Day Training (8 hour) (Training Certificate required for documentation credit.)</b>				
ModelBuilder Basics	EDU	0.2	1.33	
Editing GIS Data with ArcGIS 10.x	EDU	0.2	1.33	
1 Day Training Instructor :	EDU	3	9	
<b>2 Day Training (16 hour) (Training Certificate required for documentation credit.)</b>				
Introduction to ArcGIS Pro for GIS Professionals	EDU	0.4	2.67	
ArcGIS 4: Sharing Content on the Web	EDU	0.4	2.67	
Programming ArcGIS with Python	EDU	0.4	2.67	
2 Day Training Instructor :	EDU	3	9	
	<b>Total GISP Credits Earned</b>			

An aerial photograph of a city, likely Dubai, showing a complex multi-level highway interchange with several overpasses and ramps. In the background, there are several tall skyscrapers, including the Burj Khalifa. The city is surrounded by a body of water, and there are some industrial structures and ships visible in the distance. The word "here" is written in a large, white, stylized font, tilted diagonally, with a white triangle pointing downwards towards the city.

here

**You make the  
map even better**

**Submit Map Data**  
[upload.here.com](http://upload.here.com)

**Edit Map Data**  
[mapcreator.here.com](http://mapcreator.here.com)

**More Information**  
[uscommunity@here.com](mailto:uscommunity@here.com)

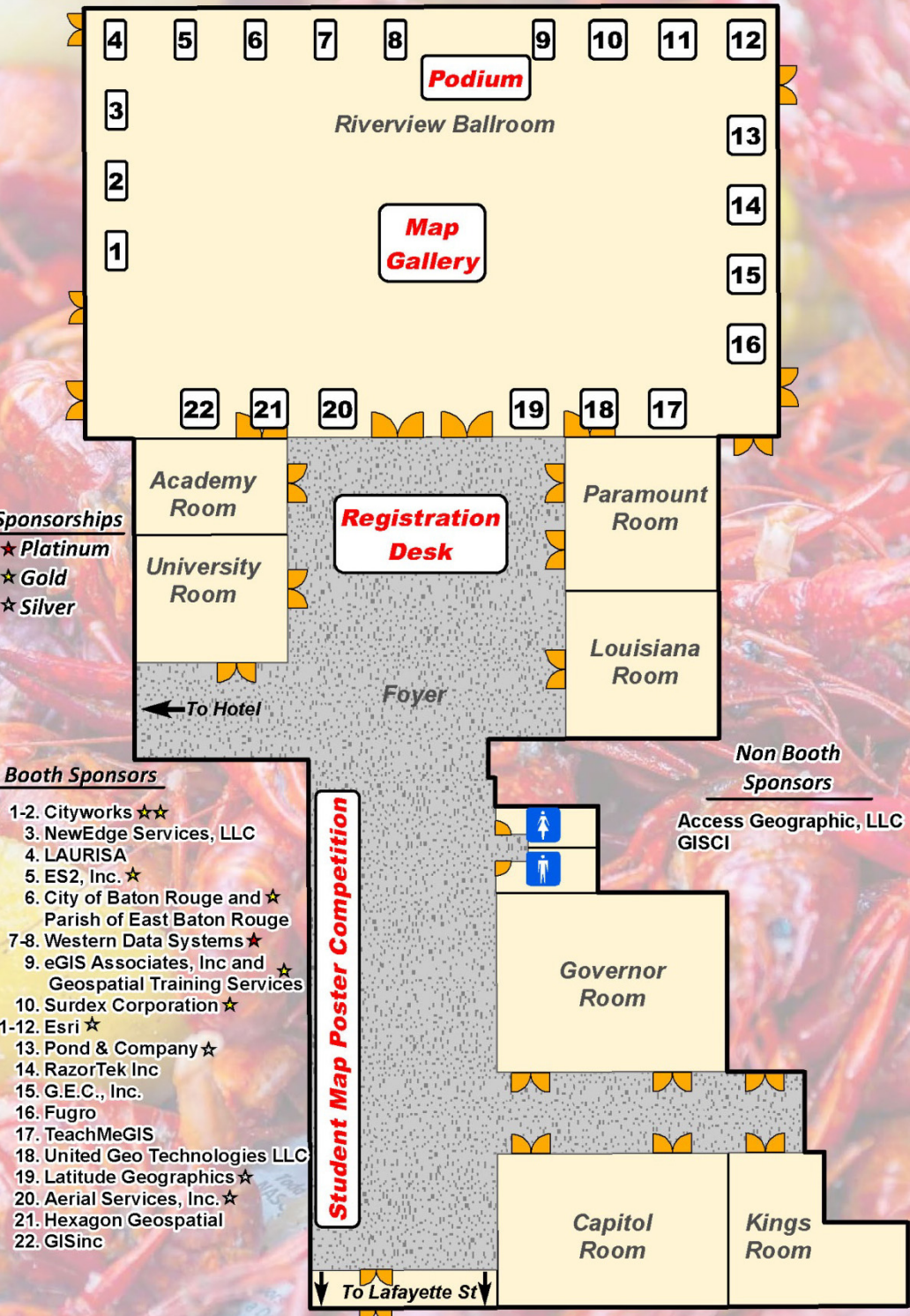
 Available on the  
**App Store**

ANDROID APP ON  
 **Google play**



# 2017 Exhibitor & Conference Layout

Hilton Baton Rouge Capitol Center 1st Floor



Please take moment to thank the exhibitors for their interest & contributions to our profession over the years.





***YOUR GEOSPATIAL SALES AND RENTAL SPECIALIST***

## **Allison Alford**

*Houston-Southeast TX*  
Regional Sales Manager  
14722 Regnal Street  
Houston, TX 77039

**O: 888-700-5211**

**C: 281-797-2649**

## **Cody Cantrell**

*North Texas – DFW*  
Regional Sales Manager  
545 Commerce St. Ste. 100  
Southlake, TX 76092

**O: 877-902-8112**

**C: 469-865-8715**

## **Robbie Trcka**

*Central and South Texas*  
Regional Sales Manager  
10822 Hillpoint  
San Antonio, TX 78217

**O: 877-300-9659**

**C: 512-826-4290**



# **Trimble®**

***Authorized Dealer***