



**33RD ANNUAL
SCAUG
CONFERENCE
APRIL 18-21
2023
FRISCO, TX**

The South Central Arc User Group

welcomes you to the

33rd Annual SCAUG Conference

This year's conference has been assembled by a dedicated group of GIS Professionals to bring you the following:

GIS Workshops

User Presentations

Industry Presentations

ESRI Hands on Learning Lab

With every GIS Professional in mind, we work diligently to provide the best training, education, outreach and support to our members. Please share your experience with others to help our organization grow and continue to support our region and the world with great Geospatially-Minded Professionals.

So, take some notes, shake some hands, and enjoy your stay in happening Frisco, Texas. We hope you head home on Friday with even more knowledge and friends that you came in with.

It's an honor and privilege to serve this community, and we look forward to doing so for many years to come.

Sincerely,

The 2023 SCAUG Board



View this
Conference
Guide online

Send us your
conference
pictures!



Table of Contents

KEYNOTE SPEAKER	4
THE EXHIBIT HALL: EXHIBITORS, SPONSORS, DINO BOWLING, CORNHOLE, & MORE!	5
WORKSHOPS & HANDS-ON LEARNING LAB	8
PLATINUM SPONSOR	10
GOLD SPONSORS	10
SILVER SPONSORS	11
PRESENTATIONS	12-18
HOLL COURSE LIST	20
CONFERENCE AGENDA	22& 23 (CENTER)
POSTER CONTEST	24 & 25
ESRI TECH SESSION ABSTRACTS	27
ADVENTURES WITH TUG	28
VISIT FRISCO: VISITORS GUIDE & MAP	30
NEWEDGE BASEBALL GAME INFO	31
SAVE THE DATE: OKSCAUG 2023	32
NOTES PAGES	35-41
POST-CONFERENCE SURVEYS	41
GISP CHECKLIST	42
HOTEL & CONFERENCE CENTER MAP	43

Thursday, April 20, 2023
KEYNOTE ADDRESS

BY

Nikolas Smilovsky, PhD, GISP
Geospatial Director - Bad Elf, LLC



Title: The Geospatial Moment

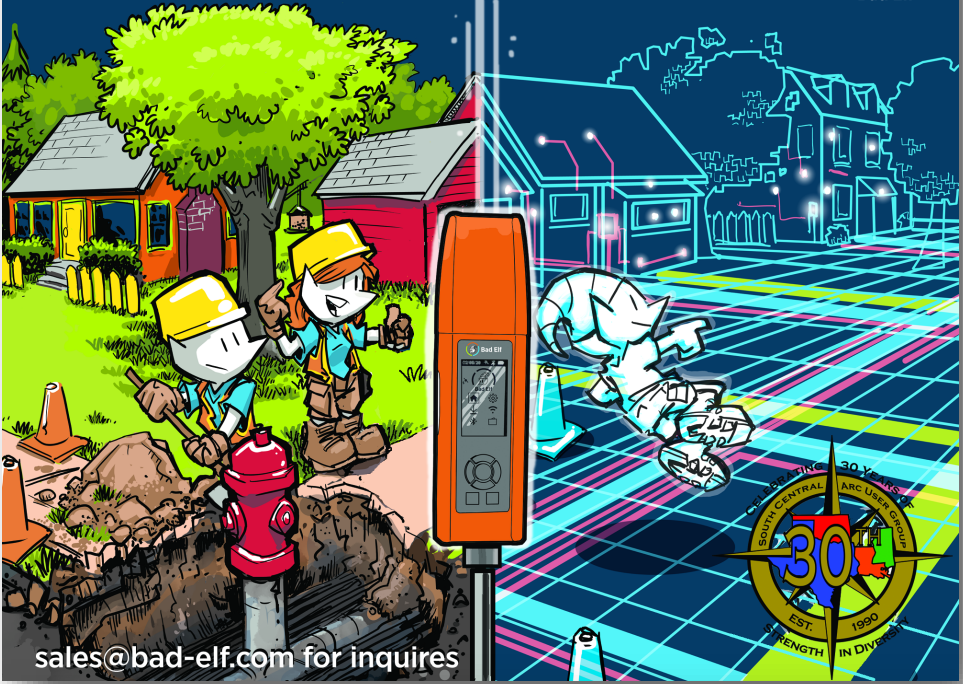
Throughout history, a number of discoveries and inventions have revolutionized the way we live, work and interact. From the discovery of fire to the invention of the printing press, the steam engine, and the internet, these moments have transformed society and paved the way for a better future. Today, we are at the cusp of another game-changing time - the Geospatial Moment. This moment is characterized by our ability to collect, process, and analyze geospatial data like never before thanks to novel location-based services, remote-sensing sciences, mixed realities, and ultimately the digital twin. The availability of these geospatial data have transformed the way we approach problem-solving, decision-making, and policy formulation. It enables us to understand our world in a way that was not possible previously and has opened new opportunities for innovation and growth.

At this year's SCAUG 2023 conference, we explore the implications of the Geospatial Moment and discuss how it is shaping our world. We examine the opportunities and challenges that arise from the availability of geospatial data, the role of technology in harnessing these data, and the importance of collaboration across different sectors. Additionally, we explore the potential of geospatial data in addressing some of the most pressing global challenges facing humanity today.

Join us as we embark on this journey of discovery and exploration. Together let us create a better world with the power of this geospatial technology revolution!



Bridging the Digital Divide



sales@bad-elf.com for inquires



APPLIED GEOSPATIAL RESEARCH AND
DEVELOPMENT, EDUCATION, AND
OUTREACH
visit ou.edu/csa



Check out the



Exhibit Hall!

EXHIBIT HALL HOURS:

Thursday 1 PM—5 PM

Friday 9 AM—3 PM

Get to know our Exhibitors by visiting the Exhibit Hall.
Maybe they'll join you for a round of
Dino Bowling or Tug Toss!



Exhibitor Bios & Websites



Pre-Conference Workshops



TUESDAY, APRIL 18, 2023

	INDIAN TRAIL	BUFFALO TRAIL
MORNING 8:00 AM —12:00 PM	Maximizing Field Operations with ArcGIS - Part I Pam Kersh - Esri	Introduction to SQL for Enterprise Databases John May
AFTERNOON 1:00 PM —5:00 PM	Maximizing Field Operations with ArcGIS - Part II Pam Kersh - Esri	Advanced SQL for Enterprise Databases John May

WEDNESDAY, APRIL 19, 2023

	INDIAN TRAIL	BUFFALO TRAIL
MORNING 8:00 AM —12:00 PM	More than ArcGIS Online Fundamentals Ana Rodriguez - Esri	Understanding Standard ArcGIS Enterprise Configurations NewEdge
AFTERNOON 1:00 PM —5:00 PM	Investigating GeoAI with ArcGIS Laura Chapa - Esri	Field Data Collection Techniques Nickolas Smilovsky (Bad Elf)

Esri Hands On Learning Lab

Thursday, April 20: 1 PM — 4 PM

Friday, April 21: 9 AM — 3 PM





ALL EYES ARE ON YOU TO DELIVER SMART COMMUNITIES.

WHAT WILL YOU DO?

Smart communities are not something that is off in the distant future. They're happening now. Thousands of jurisdictions are applying ArcGIS technology for planning and engineering, operational efficiency, data-driven performance, and civic inclusion.

Start your own smart community journey.

go.esri.com/eyes-on-smart



GIS Services

Asset/Work Management

Cloud Hosting

Unmatched Expertise at an Affordable Rate

FRISCO, TX | www.NewEdgeServices.com | info@NewEdgeServices.com

PLATINUM SPONSOR



GOLD SPONSORS



SILVER SPONSORS



Thursday Presentations

*Existing & Upcoming Horizontal Vertical Datums
and the impact to the Mapping Industry*

Vasileios "Vas" Kalogirou

Half Associates, Inc.

Marginalia: Illuminating the ArcGIS PowerShell DSC

Jordan Carmona, GISP

Think Beyond Work Management to Asset Lifecycle Management

Brent Wilson

Woolpert

All Black Towns of Oklahoma - Remembering Safe Havens

Marcus Young

OK State Historic Preservation Office

Cityworks Round Table

Bill Moss and Other Cityworks Users



We use the latest technology and cost-effective spatial data management solutions to deliver fit-for-purpose data and comprehensive mapping services that answer real business needs.

To find out more visit fugro.com

CONTEMPLATING YOUR GEOSPATIAL FUTURE?

A GISP PROFESSIONAL
CERTIFICATION CAN HELP!

VISIT

www.gisci.org

TO LEARN MORE!



GISP

Thursday Presentations (cont.)

The Oklahoma Historical Aerial Digitization Project

Colin Brooks and Madeline Dillner

OK Corporation Commission

Machine Learning Approaches for Accurate Lidar Classification

Angie Pelkie

Fugro

Utilizing Esri ArcPro for Single Family Rental Tracking & Analysis

Robbie Highfield

City of Fate, TX

Empowering Communities and Engaging Citizens through GIS-centric Software

Craig J. Dixon

Tyler Technologies



The Case for 311: Using ArcGIS Survey123 and Cartegraph

Neil Rose, GISP

City of New Braunfels, TX

A photograph of three construction workers in a meeting. A woman in the foreground is wearing a white hard hat and a yellow safety vest over a plaid shirt. Two men in the background are also wearing hard hats. They appear to be looking at a screen or document.

EMPOWER YOUR COMMUNITY AND
ENGAGE
WITH YOUR CITIZENS THROUGH
GIS-CENTRIC SOFTWARE

Enterprise Permitting & Licensing software is built on the Esri GIS platform to spatially link and share data with all interested parties from project concept to planning and approval. Stop by the Tyler Technologies booth to learn more!

tylertech.com/communitydev





G4 GEOMATIC RESOURCES

COMMITTED TO KEEPING OUR CLIENTS PRODUCTIVE

Dallas Fort Worth Area
2914 Story Road West
Irving, TX 75038
(817) 691-5328

Austin Area
4111 Todd Lane
STE H 1100
Austin, TX 78744
(512) 447-9879



San Antonio / RGV Area
1019 East Nakoma
San Antonio, TX 78216
(210) 681-4280

Houston Area
1810 Cravens Rd
Stafford, TX 77477
(713) 779-0900

G4 Geomatics Resources LLC was founded in 2021. It is the parent company of G4 Spatial Technologies LLC, Geomatic Resources LLC and Houston G4GR LLC. G4 Spatial Technologies was founded in 2008 as a spin-off of the Surveying Instrument Department of Miller Blueprint (a company founded in 1920). In 2018, G4 Spatial Technologies acquired Easy Drive Stake (a company founded in 1950) merging the two top outlets for Surveying supplies in Central Texas. Geomatic Resources LLC was founded in 2005 and has been servicing the North Texas region. Houston G4GR LLC was founded in 2021 and services the South Texas and Gulf Coast Region. G4 Geomatic Resources LLC is the premier Dealer for Leica Geosystems. G4 Geomatic Resources has offices in Austin, San Antonio, Irving and Stafford each with multiple technical sales, support, and repair service reps.

Leica
Geosystems

AUTHORIZED DEALER

Store Hours: Monday - Friday
7 AM to 5 PM



MOVING FORWARD TOGETHER

EASY DRIVE STAKE



Friday Presentations

Using Arcade in Everyday Mapping

David W. Allen, GISP
City of Euless, TX

*USGS HUC 12 (Hydrologic Unit Code)
subwatershed boundary dataset research*

Yanli Zang
Stephen F. Austin St. University

SCAUG and YOU

Garri Grossi
SCAUG State Representative
- North Texas



I Do More Than Make Maps! How to

"Sell" GIS to Stakeholders

Neil Rose, GISP
City of New Braunfels, TX
Chris Akin GISP
Paratum Solutions

The 5 Coolest Things Arcade Does

David W. Allen, GISP
City of Euless, TX

*Reflection on Disaster Response GIS Since
the Columbia Shuttle Disaster*

Dr. Darrell McDonald
Stephen F. Austin St Univ.

Dr. Noel Estwick
Prairieview A&M

ISD Camera Health Check Application

Laura Stroupe, GISP
City of Frisco, TX

PROWEST
& Associates

Award-winning GIS support for local governments

- 📍 GIS modernization
- 📍 Parcel Fabric implementation and training
- 📍 Enterprise GIS implementation
- 📍 Esri solution configuration
- 📍 System integration
- 📍 System architecture design and deployment

www.prowestgis.com

**EMPOWERING
ALL COMMUNITIES
TO LIVE BETTER.**

DATAMARK

Your Trusted Partner In The
Successful Transition to NG9-1-1.

Scan The QR Code
To Learn More
or Visit DATAMARKGIS.com



AMERICA'S GO-TO AUTHORITY FOR PUBLIC SAFETY GIS

Friday Presentations (cont.)

*The Integrated Power of GIS & GPS:
A Municipality Case Study*

Laura Chapa

Esri

Nikolas Smilovsky, PhD, GISP

Bad Elf LLC

Jordan Carmona, GISP

Town of Prosper, TX



*From Visiting a Cool Conference Booth to
Saving \$400,000 While Improving the
Student Experience*

J. Scott Sires

Dallas College

*Visualizing Real-Time Data to Provide
Situational Awareness for Emergency
Response*

Susan Olson

City of Frisco, TX

*Acting Professional: Behavioral Tips and
Tricks No One Teaches You*

Chris Akin, GISP

Paratum Solutions

*ArcGIS Online: Accessibility Best Practices
for Web Apps*

Sean Gill & Ana Rodriguez (Esri)

Building a Real Time Application

Greg Hakman & Pam Kersh (Esri)

*It's Your Move: Impacts of Climate
Change & Rising Sea Levels on Barrier
Islands in the Assateague Island Vicinity*

Diane Johnson

TEXAS **GIS** FORUM

October 23-27 2023

The premiere gathering for the Texas GIS Community
for more than 30 years.

Call for presentations
closes May 16, 2023.

Sponsorship registration
will open in May.

Your Strategic Geospatial Resource

- Aerial imagery acquisition
- Digital orthoimagery
- Lidar acquisition and processing
- Digital mapping
- Unmanned Aerial Systems



CONTACTS

Brett Thomassie
VP Business Development
brett.thomassie@surdex.com

Cornell Rowan, CP
Sr. Project Manager
cornell.rowan@surdex.com

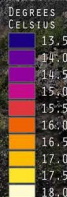
surdex.com
636-368-4400

NIV5 GEOSPATIAL

Anyone can take a picture.
We tell it's story.

SPECIES GROUP	FIR
HEIGHT	36.65 M
CROWN DIAMETER	11.32 M
DBH	0.85 M
CONDITION	HEALTHY

DEPTH	0.32 M
TEMPERATURE	14.7° C
GEOMORPHIC CLASS	RIFLEE
SOLAR EXPOSURE	HIGH



Klamath River, Oregon

www.niv5geospatial.com

VISIT THE

ESRI HANDS-ON LEARNING LAB

Thursday, April 20: 1:00 pm - 4:00 pm

Friday, April 21: 9:00 am to 3:00 pm

The Hands-on Learning Lab (HOLL) is a training resource provided and developed by Esri Training Services.

The HOLL consists of a group of laptops with headphones where students can work through lessons at their own pace. A lesson consists of a recorded presentation followed by a hands-on exercise. Each lesson typically takes about 45 minutes to one (1) hour to complete and students can generally come and go as they please.

Exploring ArcGIS	Getting Started with ArcGIS Online	Getting Started with ArcGIS Pro	Getting Started with GIS	Adding Location-Based Data to a Map	Automating Workflows Using Python
Creating Interactive Maps in Spreadsheets and Presentations	Creating Web Apps Using ArcGIS Experience Builder	Discovering Patterns Using ArcGIS Insights	Exploring ArcGIS Field Maps	Exploring ArcGIS Living Atlas of the World	Getting Started with Arcade
Getting Started with ArcGIS Notebooks	Getting Started with ArcGIS Survey123	Getting Started with ArcGIS Business Analyst	Getting Started with ModelBuilder	Improving Newborn Health Using ArcGIS Online	Integrating CAD and BIM Data with ArcGIS
Managing Parcels and Land Records Using the Parcel Fabric	Mapping Clusters with ArcGIS Pro	Monitoring Activity Using ArcGIS Dashboards	Performing Image Classification Using Deep Learning	Processing Imagery with Raster Functions	Solving Transportation Problems Using ArcGIS Network Analyst
Spatial Modeling and Analysis Using ArcGIS Spatial Analyst			Telling Stories with ArcGIS StoryMaps		



**ALL EYES ARE
ON YOU TO
DELIVER SMART
COMMUNITIES.**

**WHAT WILL
YOU DO?**

Smart communities are not something that is off in the distant future. They're happening now. Thousands of jurisdictions are applying ArcGIS technology for planning and engineering, operational efficiency, data-driven performance, and civic inclusion.

Start your own smart community journey.

go.esri.com/eyes-on-smart



Asset Management | Permitting, Planning | Real-Time IoT | Work Management



Cityworks.com

WEDNESDAY, APRIL 19

5:00 PM—8:00 PM	WELCOME SOCIAL—WITH LIGHT HORS D'OEUVRES UNTIL 6PM (ATRIUM)
-----------------	---

THURSDAY, APRIL 20

7:30 AM—9:00 AM	REGISTRATION (FOYER) + CONTINENTAL BREAKFAST (BALLROOM / FRISCO 6)		
9:00 AM—11:00 AM	OPENING SESSION (BALLROOM / FRISCO 6)		
11:00 AM—12:00 PM	KEYNOTE ADDRESS—NIKOLAS SMILOVSKY, PHD, GISP—BAD ELF (BALLROOM / FRISCO 6)		
12:00 PM—1:00 PM	CATERED LUNCH (BALLROOM / FRISCO 6)		
SESSIONS	Track 1 - Indian Trail	Track 2 - Buffalo Trail	Track 3 - Comanche
1:00 PM—1:30 PM	EXISTING & UPCOMING HORIZONTAL VERTICAL DATUMS & THE IMPACT TO THE MAPPING INDUSTRY <i>VALILEIOS KALOGIROU PS HALFF ASSOCIATES</i>	MARGINALIA: ILLUMINATING THE ARCGIS POWERSHELL DSC <i>JORDAN CARMONA, GISP</i>	<div style="border: 2px solid black; padding: 10px;"> <p>You can read abstracts at scaug.org/2023-SCAUG-User-Presentation-Schedule</p> <p>Scan this QR code with your phone camera to go there now:</p>  </div>
1:40 PM — 2:10 PM	THINK BEYOND WORK MANAGEMENT TO ADDED ASSET LIFECYCLE MANAGEMENT <i>BRENT WILSON WOOLPERT</i>	ALL BLACK TOWNS OF OKLAHOMA - REMEMBERING SAFE HAVENS <i>MARCUS YOUNG OK STATE HISTORIC PRESERVATION OFFICE</i>	
2:20 PM — 2:50 PM	CITYWORKS ROUND TABLE <i>BILL MOSS ET AL</i>	THE OKLAHOMA HISTORICAL AERIAL DIGITIZATION PROJECT <i>MADELINE DILLNER COLIN BROOKS OKLAHOMA CORPORATION COMMISSION</i>	
3:00 PM—3:30 PM	EXHIBITOR BREAK (BALLROOM / FRISCO 6)		
3:30 PM—4:00 PM	MACHINE LEARNING APPROACHES FOR ACCURATE LIDAR CLASSIFICATION <i>ANGIE PELKIE FUGRO</i>	UTILIZING ESRI ARCPRO FOR SINGLE FAMILY RENTAL TRACKING & ANALYSIS <i>ROBBIE HIGHFIELD CITY OF FATE, TX</i>	
4:10 PM—4:40 PM	EMPOWERING COMMUNITIES & ENGAGING CITIZENS THROUGH GIS-CENTIC SOFTWARE <i>CRAIG DIXON, TYLER TECHNOLOGIES</i>	THE CASE FOR 311: USING ARCGIS SURVEY 123 AND CARTEGRAPH <i>NEIL ROSE, GISP CITY OF NEW BRAUNFELS, TX</i>	<div style="border: 2px solid black; padding: 10px;"> <p>View the Guide online at scaug.org/2023-SCAUG-Conference-Guide</p>  </div>
5:00 PM—8:00 PM	EXHIBITOR SOCIAL—WITH LIGHT HORS D'OEUVRES UNTIL 6PM (FRISCO 6)		

FRIDAY, APRIL 21

REGISTRATION (FOYER) + BREAKFAST SERVED (BALLROOM / FRISCO 6)			8:00 AM—9:00 AM
Track 1 - Indian Trail	Track 2 - Buffalo Trail	Track 3 - Comanche	SESSIONS
<p>USING ARCADE IN EVERYDAY MAPPING</p> <p>DAVID ALLEN, GISP CITY OF EULESS</p>	<p>SCAUG AND YOU</p> <p>GARRI GROSSI SCAUG REGIONAL REP</p>	<p>ESRI HANDS ON LEARNING LAB</p>	9:00 AM—9:30 AM
<p>THE 5 COOLEST THINGS ARCADE DOES</p> <p>DAVID ALLEN, GISP CITY OF EULESS</p>	<p>USGS HUC 12 (HYDROLOGIC UNIT CODE) SUBWATERSHED BOUNDARY DATASET RESEARCH</p> <p>YANLI ZANG STEPHEN F. AUSTIN STATE UNIVERSITY</p>		9:40 AM—10:10 AM
EXHIBITOR BREAK (BALLROOM / FRISCO 6)			10:10 AM—10:40 AM
<p>I DO MORE THAN MAKE MAPS! HOW TO "SELL" GIS TO STAKEHOLDERS</p> <p>NEIL ROSE, GISP CITY OF NEW BRAUNFELS, TX</p> <p>CHRIS AKIN, GISP PARATUM SOLUTIONS</p>	<p>REFLECTION ON DISASTER RESPONSE GIS SINCE THE COLUMBIA SHUTTLE DISASTER: 20 YEARS</p> <p>DR. DARREL MCDONALD SFASU</p> <p>DR. NOEL ESTWICK PRAIRIE VIEW A&M UNIVERSITY</p>	<p>ESRI HANDS ON LEARNING LAB</p>	10:40 AM—11:10 AM
<p>THE INTEGRATED POWER OF GIS & GPS: A MUNICIPALITY CASE STUDY</p> <p>LAURA CHAPA, ESRI</p> <p>NIKOLAS SMILOVSKY, BAD ELF</p> <p>JORDAN CARMONA, GISP, THE TOWN OF PROPSEY, TX</p>	<p>VISUALIZING REAL-TIME DATA TO PROVIDE SITUATIONAL AWARENESS FOR EMERGENCY RESPONSES</p> <p>SUSAN OLSON CITY OF FRISCO, TX</p>		11:20 AM—11:50 AM
CATERED LUNCH (BALLROOM / FRISCO 6)			12:00 PM—1:00 PM
<p>ARCGIS ONLINE: ACCESSIBILITY BEST PRACTICES FOR WEB APPS</p> <p>SEAN GILL & ANA RODRIGUEZ ESRI</p>	<p>FROM VISITING A COOL CONFERENCE BOOTH TO SAVING \$400,000 WHILE IMPROVING THE STUDENT EXPERIENCE</p> <p>J. SCOTT SIREY DALLAS COLLEGE</p>	<p>ESRI HANDS ON LEARNING LAB</p>	1:00 PM—1:30 PM
<p>BUILDING A REAL TIME APPLICATION</p> <p>GREG HAKMAN & PAM KERSH ESRI</p>	<p>ISD CAMERA HEALTH CHECK APPLICATION</p> <p>LAURA STROUPE, GISP CITY OF FRISCO, TX</p>		1:40 PM—2:10 PM
<p>ACTING PROFESSIONAL: BEHAVIORAL TIPS AND TRICKS NO ONE TEACHES YOU</p> <p>CHRIS AKIN, GISP PARATUM SOLUTIONS</p>	<p>IT'S YOUR MOVE: IMPACTS OF CLIMATE CHANGE & RISING SEA LEVELS ON BARRIER ISLANDS IN THE ASSATEAGUE ISLAND VICINITY</p> <p>DIANE JOHNSON</p>		2:20 PM—2:50 PM
CLOSING SESSION / DOOR PRIZES (BALLROOM / FRISCO 6)			3:00 PM—4:00 PM

Poster Contest

Don't miss the map gallery!

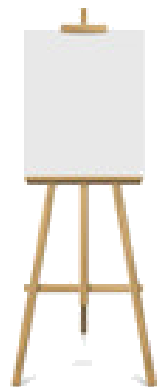
Voting shall take place via Survey123 and will be open to all conference exhibitors and attendees.

Voting Survey Opens: 1:00 PM on Thursday, April 20

Voting Survey Closes: 1:00 PM on Friday, April 21

>> VOTE HERE <<

<https://scaug.org/2023-SCAUG-Map-Gallery>



POSTER ENTRIES

Bret Fenster, GISP — *County of Collin, Texas*
The Art of Presidential Primary Patterns

Bret Fenster, GISP- *County of Collin, Texas*
Ross Cemetery Survey

Candace Johnston-Perry and Daniela Spade—
OU Center for Spatial Analysis
Transitioning Pest Data Collection from Excel to Field Map

Daniela Spade and Candace Johnston-Perry—
OU Center for Spatial Analysis
The Center for Spatial Analysis: Key Projects and Services

Garri Grossi —*City of Carrollton*
ArcGIS Pro Style Collection

Kendall Holland—*Collin County*
Let's get MUDDy!

Kristi Shannon— *City of Lawton GIS Division*
Lake Lawtonka Angler Mapping Project

Nicole Dogan, GISP—*TOWN OF FLOWER MOUND*
Genealogical Research, Enhanced with GIS

Terri Rogers, GISP—*Texarkana Water Utilities*
Texarkana Texas Fire Department - Fire Districts and ESN

Emily Offer—*City Of Carrollton*
Downtown Parking Utilization

Joe Gilberg—*Lone Star Transmission, LLC*
Lone Star Transmission Solar Resource Map

Terri Rogers, GISP—*Texarkana Water Utilities*
Bowie County School Districts

Laura Smith — *Clara Luper & The NAACP Youth Council*
A City Changed



VertiGIS is proud to be a SILVER Sponsor of SCAUG 2023!

Welcome to **VertiGIS Studio**, your complete toolbox for building better Web and Mobile GIS applications. Please come by our booth to see how you can build better apps, quicker and with little or no customization.

vertigisstudio.com



Esri Tech Sessions

Building A Real-Time Application:

Learn how to build apps that allow you to connect to, visualize and analyze real-time feeds. In ArcGIS, you can use ArcGIS Velocity and GeoEvent Server to connect feeds, then analyze them in real-time and serve data to ArcGIS client apps via ArcGIS Stream Services. We will show how you can use these Stream Services in apps built with the ArcGIS Maps SDK for JavaScript and ArcGIS Maps SDKs for Native Apps, including various ways to visualize information, interact with it and analyze it. We will also show how Geotriggers allows you to perform real-time analysis on device location in mobile apps.

ArcGIS Online:

Accessibility Best Practices for Web Apps: Web applications provide the capability for your audience to interact with your data and maps. Designing apps with accessibility best practices ensures that all audiences can easily interact with and understand your information. Come to this session to learn how to optimize support for screen readers, keyboard navigation, and other assistive technologies across ArcGIS Online. In this session, you will learn about testing accessibility in web apps. You will also be introduced to tools and techniques that ensure you are developing an inclusive app experience.



Going somewhere? Take Tug with you!



WWW.
SCAUG.ORG
/TUG



“Tug Checking In!

It's Tuesday, September 27, 2022, and I am with Kelsey Bufford at Punta Cana, Dominican Republic!

What are we up to? Well, in the words of my travel buddy:
‘Tug and I are relaxing at the beach, taking in the beautiful scenery, and having a few cocktails!’”





WOOLPERT

THINK BEYOND

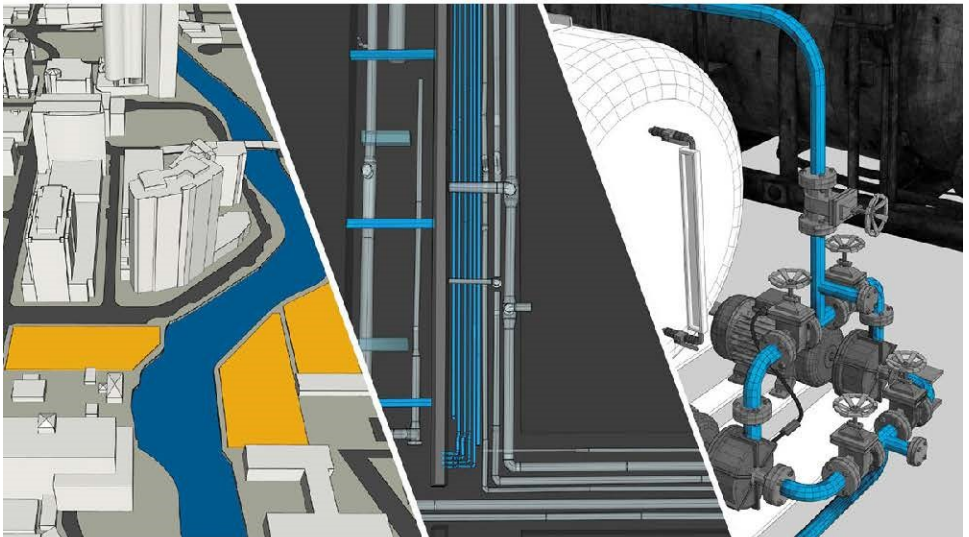
your current operations and streamline
your entire performance management.

AVAILABLE SERVICES

Trimble Implementation Services for
Asset Lifecycle Management

- Cityworks AMS & PLL
- Trimble Unity
- e-Builder
- Vegetation Management
- Agile Assets

Strategic Asset Management Planning
Photogrammetry and Remote Sensing
Lidar

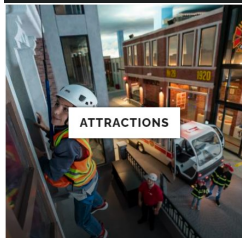


Visit our booth in the exhibit hall.



Frisco

www.visitfrisco.com



ATTRactions



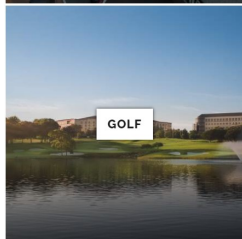
ARTS & CULTURE



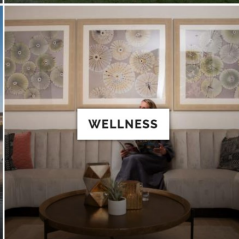
MUSEUMS



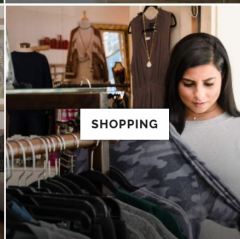
OUTDOORS



GOLF



WELLNESS



SHOPPING



NIGHTLIFE

MAP



Frisco Visitors Guide

Visit Frisco offers the Frisco Visitors Guide in digital format. |

“Thanks, Frisco!”
- Tug



Take Me Out to the Ballgame... with NewEdge Service!



FRISCO ROUGHRIDERS  

**Thursday, April 20th
After Exhibitor Social**

Each ticket is for admission and \$15 concession credit

All attendees must pre-register and pick up ticket from the NewEdge Services' booth in the Exhibit Hall

Register Here 

NewEdge is covering the tickets and the tickets include entrance to the game and \$15 at the concession stand. Folks just need to register and swing by the booth to pick them up. Register using the following link: <https://arcg.is/DSq1y0>

See You at the Ballpark!



NEW PLACE, SAME TIME.



OKSCAUG

2023

TUESDAY, SEPTEMBER 26

METRO TECH • SPRING LAKE CAMPUS • OKC

The more things change, the more they stay the same.

Experience the same great content in a new location.

OKSCAUG 2023
Tuesday, September 26, 2023
Metro Tech Spring Lake Campus,
Oklahoma City, OK



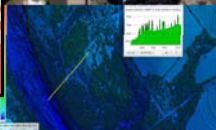
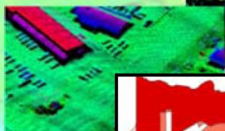
Patsy Ingram
President

pingram@unitedgeotech.com

David Zuniga
Vice President

dzuniga@unitedgeotech.com

**Photogrammetric Mapping,
Orthophotography,
Airborne LiDAR and
Geographic
Information Systems (GIS)
Specialists**



WBE / DBE / SBE

TxDOT Precertified 15.3.1



United Geo Technologies LLC

A small, woman owned business

7715 Mainland, Suite 110

San Antonio, Texas 78250

210.684.2147

www.unitedgeotech.com

TEXAS **GIS** FORUM

October 23-27 2023

The premiere gathering for the Texas GIS Community
for more than 30 years.

**KEEP
TEXAS
ELEVATED**

Call for presentations
closes May 16, 2023.

Sponsorship registration
will open in May.

Complete Geospatial Solutions

The power of partnership

Together, we provide geospatial imagery, lidar, analysis, applications, strategy, and GIS technical consulting.

discover more at sanborn.com

Your Strategic Geospatial Resource

- Aerial imagery acquisition
- Digital orthoimagery
- Lidar acquisition and processing
- Digital mapping
- Unmanned Aerial Systems

CONTACTS

Brett Thomassie
VP Business Development
brett.thomassie@surdex.com

Cornell Rowan, CP
Sr. Project Manager
cornell.rowan@surdex.com



surdex.com
636-368-4400

NOTES

NOTES

NOTES

Award-winning GIS support for local governments

- 📍 GIS modernization
- 📍 Parcel Fabric implementation and training
- 📍 Enterprise GIS implementation
- 📍 Esri solution configuration
- 📍 System integration
- 📍 System architecture design and deployment

www.prowestgis.com

**EMPOWERING
ALL COMMUNITIES
TO LIVE BETTER.**



Asset Management | Permitting, Planning | Real-Time IoT | Work Management

 **Cityworks**

Cityworks.com

NOTES



NOTES



2023 SCAUG GISP Checklist

Regional SCAUG Conference 2023 GISP Credit Checklist	Class	Initial GISP	Recent GISP	Credits Earned
---	-------	-----------------	----------------	-------------------

Training / Workshops (4 hour) (Certificate required for documentation credit.)				
101.Esri - Maximizing Field Operations with ArcGIS (Part 1) (4 hours)	EDU	4 hrs	4 hrs	
102.John May: Introduction to SQL for Enterprise Databases	EDU	4 hrs	4 hrs	
201.Esri - Maximizing Field Operations with ArcGIS (Part II) (4 hours)	EDU	4 hrs	4 hrs	
202.John May: Advanced SQL for Enterprise Databases (4 hours)	EDU	4 hrs	4 hrs	
301.Esri - More than ArcGIS Online Fundamentals (4 hours)	EDU	4 hrs	4 hrs	
302.NewEdge: Enterprise ArcGIS Discussion (4 hours)	EDU	4 hrs	4 hrs	
401.Esri - Investigating GeoAI with ArcGIS (4 hours)	EDU	4 hrs	4 hrs	
402.The Bad Elf - Field Data Collection Techniques (4 hours)	EDU	4 hrs	4 hrs	

SCAUG Conference Participation (8 hour)				
Attendee (Attendee 8 hrs/full day attended)	EDU	2 day	2 day	
Presenter (1 point per instance)	CON	1	3	
Poster Presenter (1 point per instance)	CON	1	3	
Poster Award Winner	CON	2	6	

Instructors				
1/2 Day Training Instructor : _____	CON	3	9	
GISP Points are awarded upon hours of training completed:		40 hrs = 1 EDU pnt	6 hrs = 1 EDU pnt	

SCAUG provides GISP EDU points based on the following formula:		1 pnt/yr of membership	3 pnt/yr of membership	
Total GISP Points Earned:				

HOTEL & CONFERENCE CENTER

REGISTRATION
(Thursday & Friday)



WELCOME SOCIAL
Weds.
1st Fl. Atrium

EXHIBIT HALL
Thurs 1 PM—5 PM
Fri 9 AM—3 PM

Visit Exhibitors



SCAUG Games



2nd Floor
WORKSHOPS & REGISTRATION
(Tuesday & Wednesday)
PRESENTATIONS
(Thursday & Friday)

EXHIBITOR SOCIAL
Thurs.



Map Gallery

289



ALLTERRA™

Your Mapping & GIS Specialists

**Trimble
TDC600,
Catalyst
Decimeter,
DA2 w/1-year
TerraFlex
Advanced**



Trimble.
Authorized Dealer

Handhelds with GNSS Receivers Antennas
Data Collectors Software Accessories
Catalyst GeoSLAM Juniper Systems TruPulse

SALES RENTAL SERVICE SUPPLIES

AUSTIN DALLAS-FT. WORTH HOUSTON MCALLEN MIDLAND/ODESSA SAN ANTONIO
OKLAHOMA NEW MEXICO ARIZONA

Visit allterracentral.com
or call 877-309-4099