



**Empowering Communities & Engaging Citizens  
through GIS-centric Software**

© Tyler Technologies 2020





**Craig J. Dixon**

Senior Account  
Executive

20 years with Tyler



**Craig Dixon**

Senior Account  
Executive

20 Years

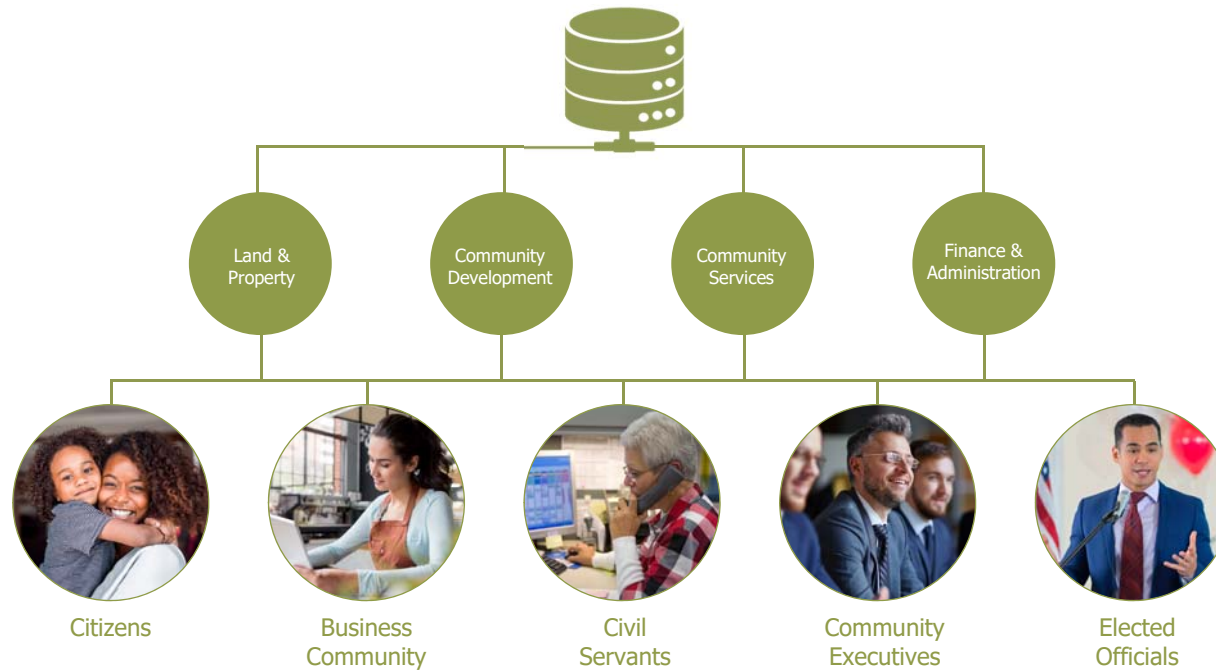


**Matt Kesler**

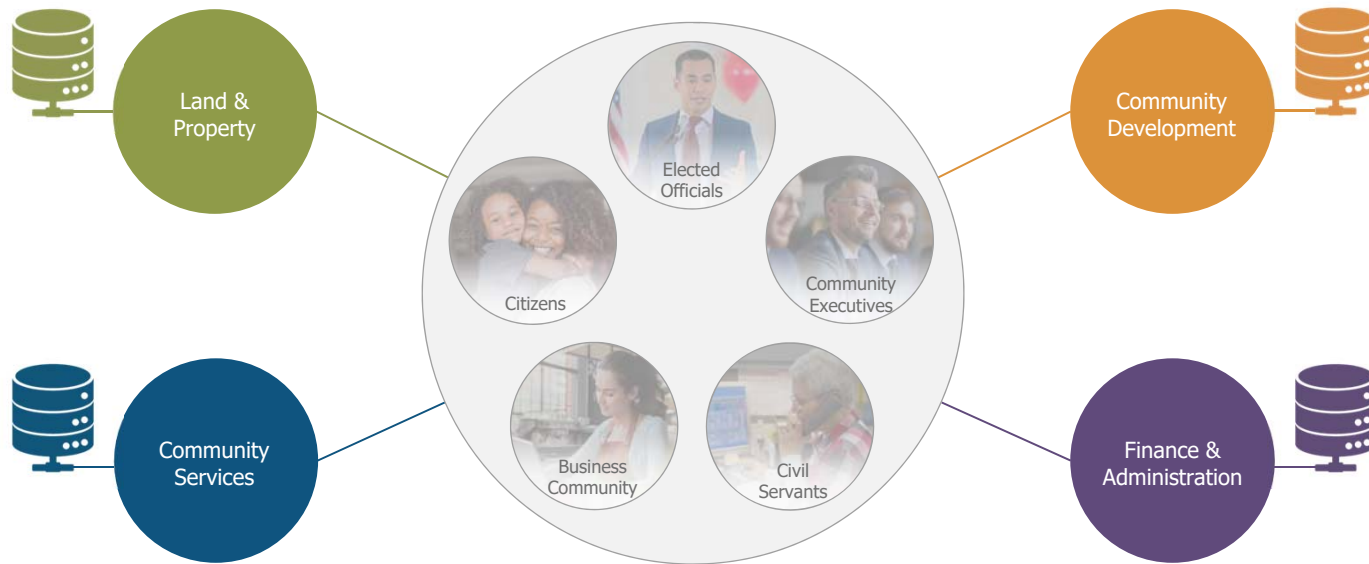
Senior Solutions  
Consultant

11 Years

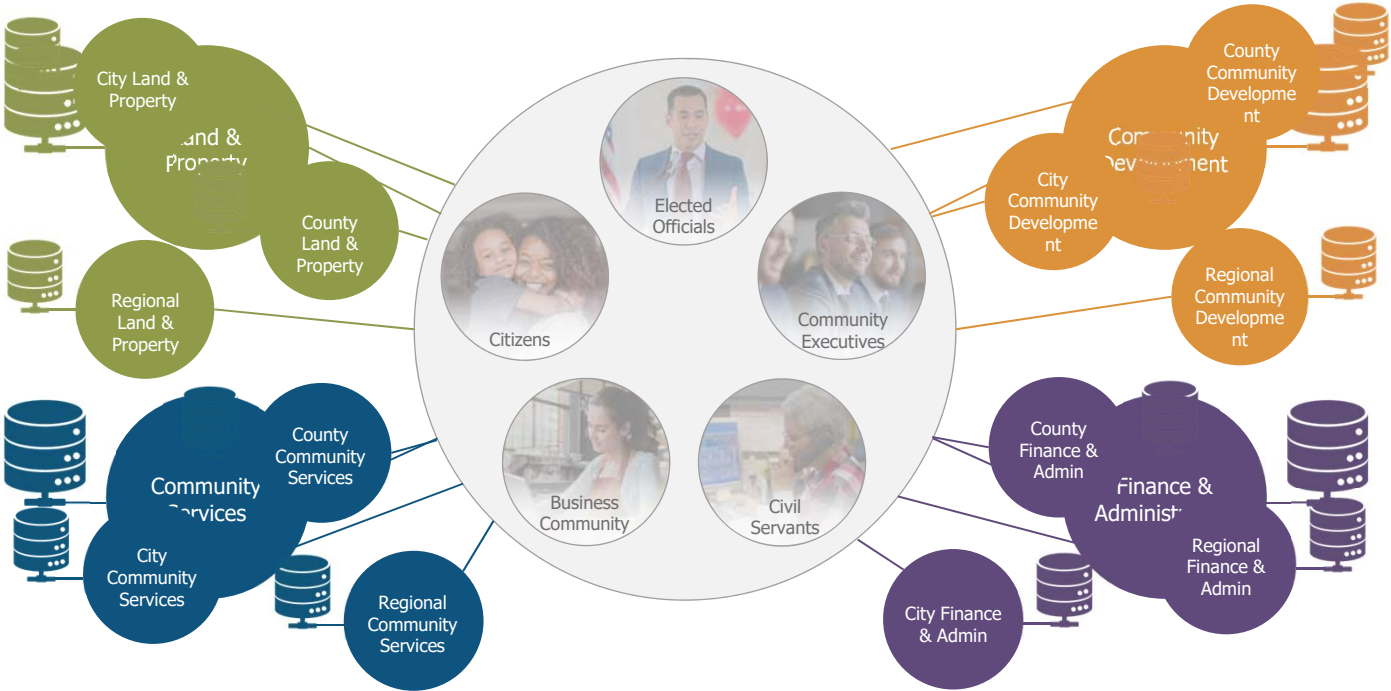
# Constituents think the community's information flows in an orderly way...



## But typically, each agency operates multiple information silos



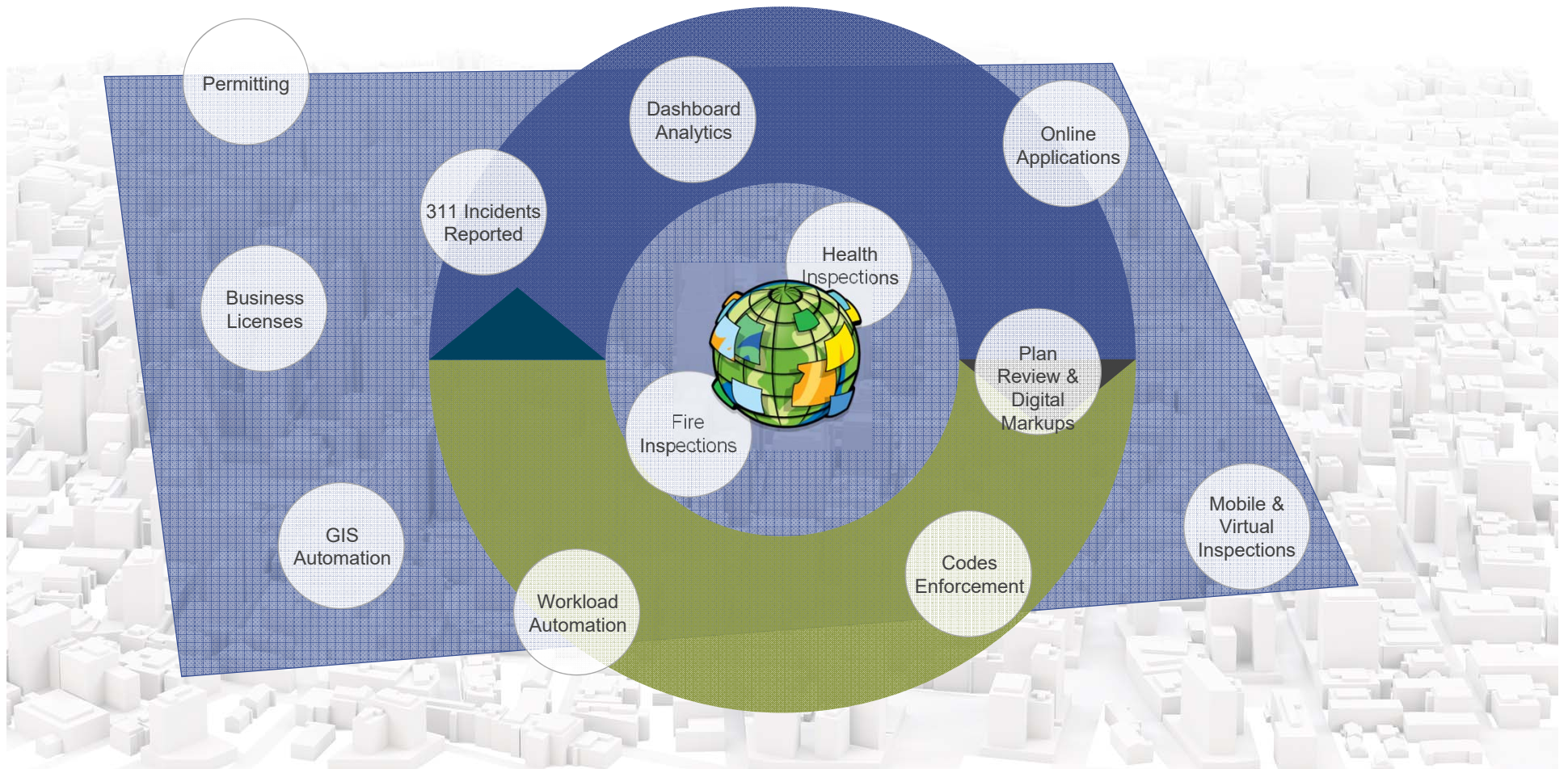
# With the complexity increasing dramatically when you consider all departments & regional agencies



## Behind the scenes, it's complex and fragmented



# Connecting communities through **digital collaboration**







**Empowering Communities & Engaging Citizens  
through GIS-centric Software**

© Tyler Technologies 2020





 **tyler**  
technologies

© Tyler Technologies 2020

 **tyler**  
technologies



Founded in **1966**





Exclusive focus on the public sector since **1997**



## Trusted Partner

---

Tyler is the **largest software provider** solely focused on the public sector and a **trusted partner** to local, state, and federal government agencies.



Tyler is exclusively focused on providing software and services to federal, state, and local governments and schools, **empowering our clients to build safer, smarter, and more vibrant communities**

© Tyler Technologies, Inc. 2015





**21,000 installs**  
spanning all 50 U.S. states, Canada, the Caribbean,  
Bermuda, Australia, and other international locations

# SOLUTIONS THAT EMPOWER ALL AREAS OF GOVERNMENT OPERATIONS



Public  
Works /  
Building  
Control



Courts &  
Public  
Safety



Finance &  
ERP



Tax  
Appraisal &  
Assessment



Enterpris  
e  
Payments



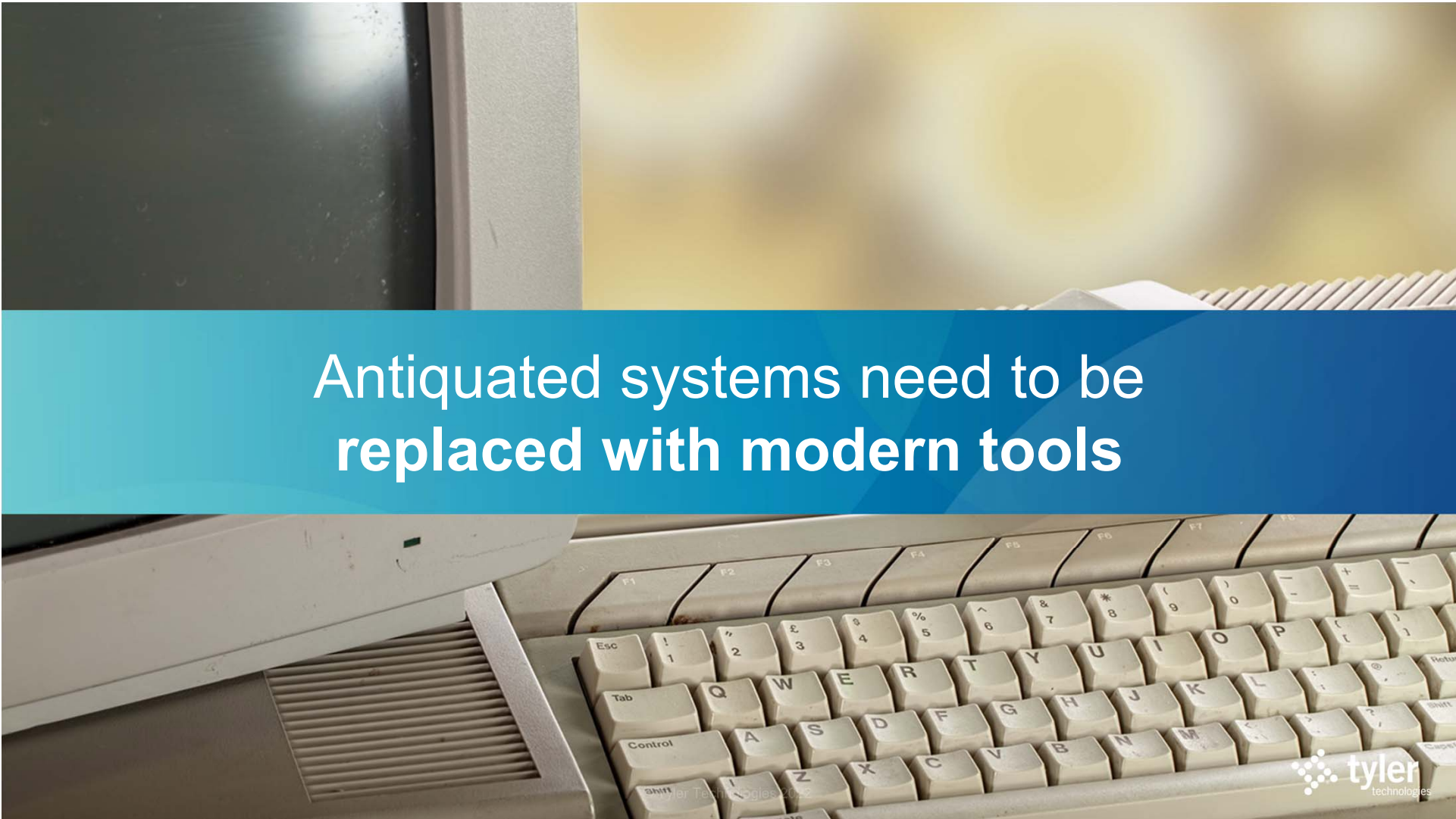


**We understand**





Citizens expect government agencies to be **using all available data tools** to keep their community safe, clean, and efficient



**Antiquated systems need to be  
replaced with modern tools**

A hand holding a smartphone displaying a map with a green location pin and a red location pin. The background is a blurred indoor setting.

Our clients expect that the most **current technology** and **intelligent GIS data** is integrated into the software



# Tyler and Esri

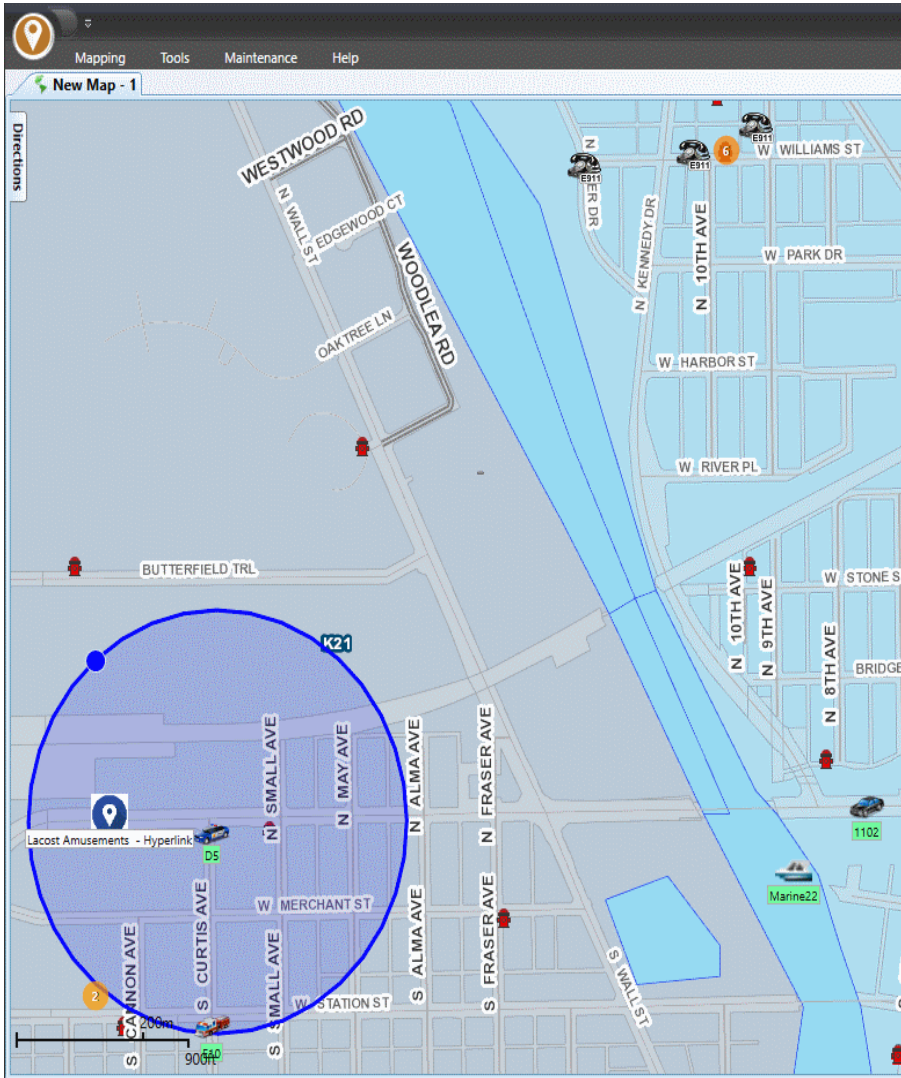


# Best Practices with GIS & Software



© Tyler Technologies 2022





# Enterprise Public Safety

Benefits of integrated Esri mapping

Dynamic ETAs with true **situational awareness** based on travel time, road systems, and real-world routing factors.

**Geo-fencing** capabilities provide dynamic updating ETAs for responding units and automatic notifications to dispatch when units arrive on scene.

Access to **external data services** like traffic cameras, sensors, alarms, video, demographic data, and more.





# Enterprise Assessment & Tax

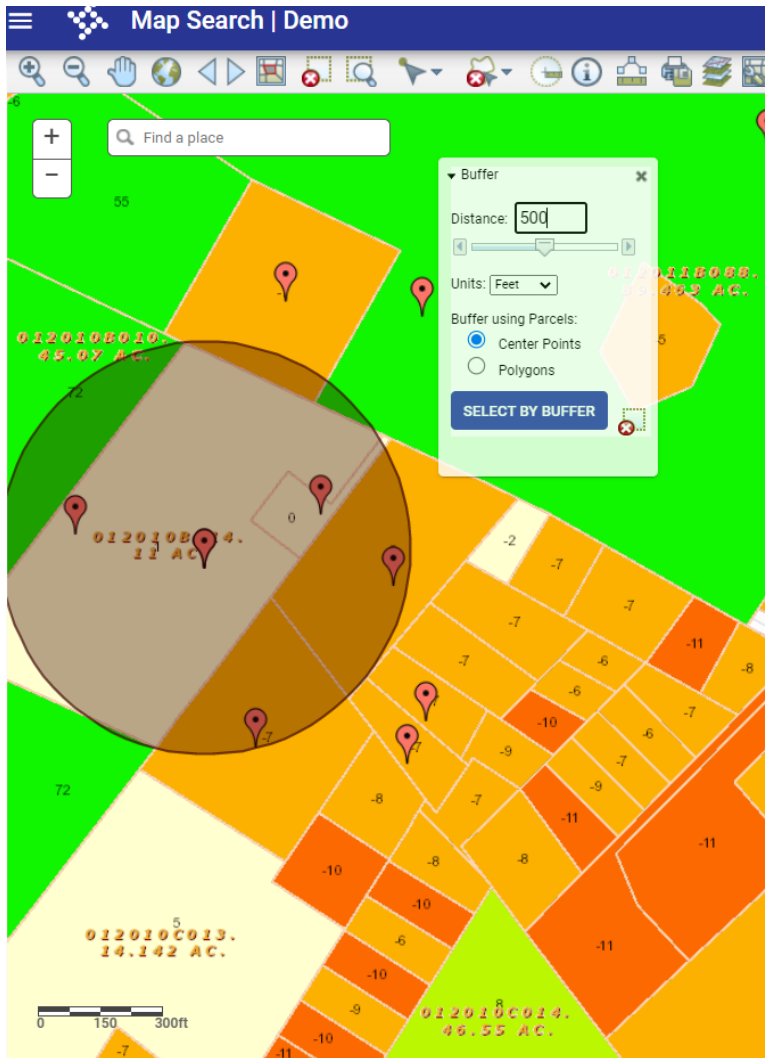
Benefits of integrated Esri mapping

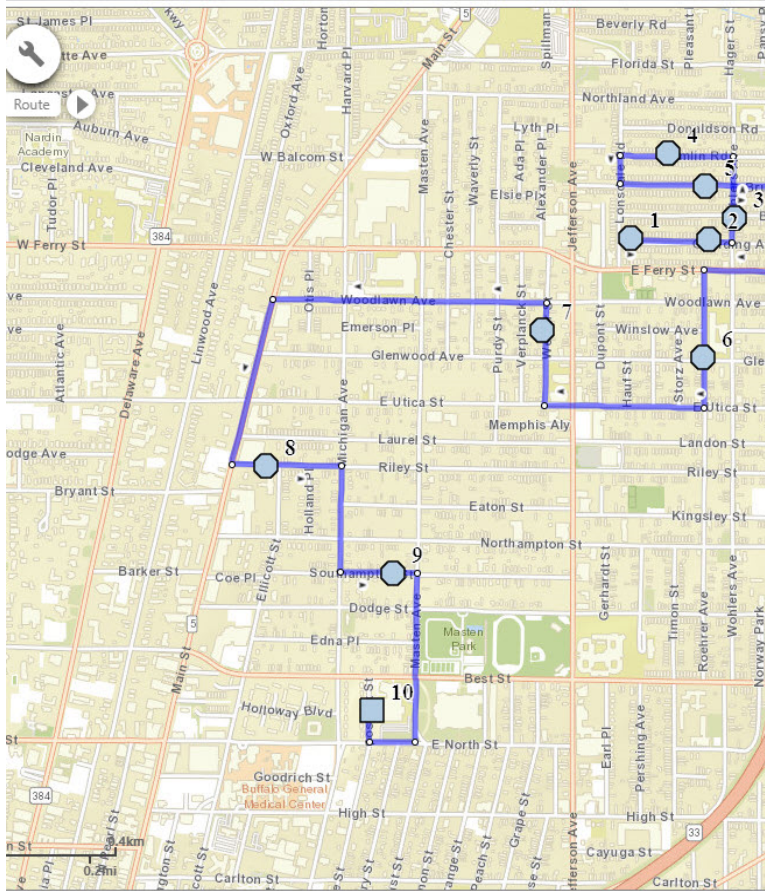
Views of property attributes including CAMA and spatial data, aerial images, sketches, and property photos

CAMA data is displayed in real-time on thematic map layers and event-based conditions that show the location of events such as permits, sales, and appeals

Users interactively select one or more parcels, and then view their GIS feature and CAMA data attributes or execute actions against the selection

© Tyler Technologies 2022





# Student Transportation

Benefits of integrated Esri mapping

Dynamic and precise routing, that can be optimized and updated instantaneously

AVL enabled technology to track and manage fleet maintenance

Geo-fencing capabilities provide dynamic updates on ETAs

# Enterprise Asset Management

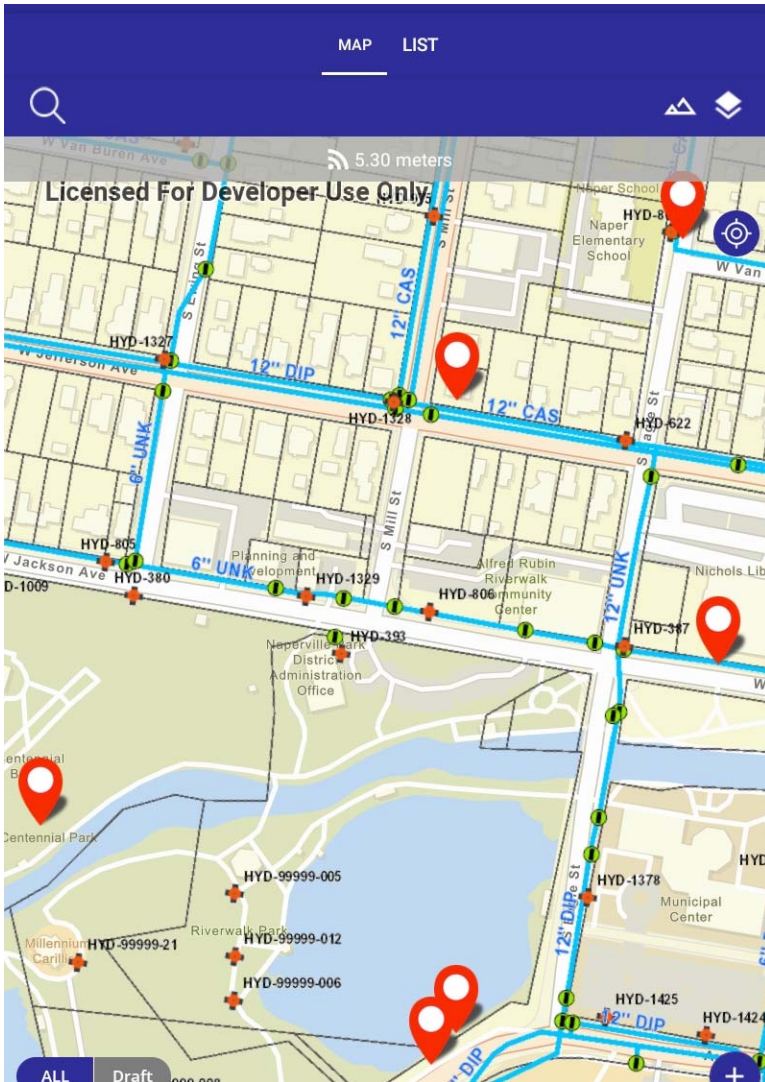
Benefits of integrated Esri mapping

Live/real-time GIS data available within the solution

Data Sync keeps textual details and spatial details aligned between applications

Asset Creation, Asset Management, Work Order Schedule, Work Order Execution and Work Order Analytics are based off GIS map

© Tyler Technologies 2021



# Enterprise Permitting & Licensing

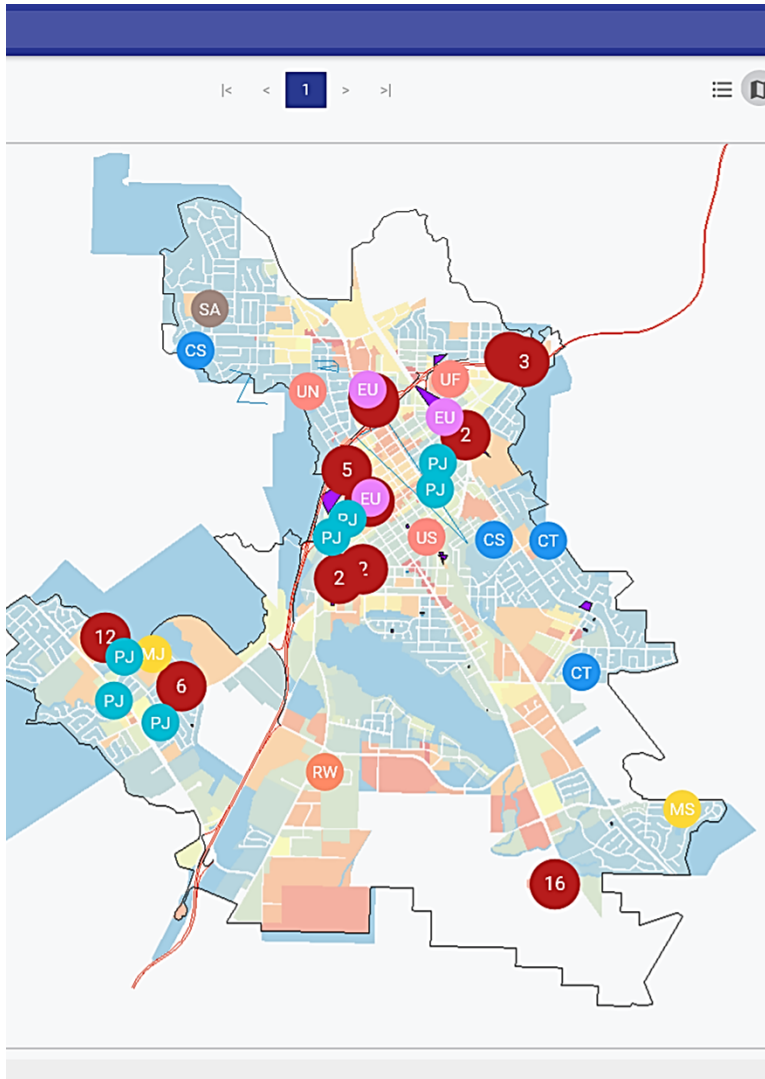
Benefits of integrated Esri mapping

Construction tied to a parcel or spatial feature/point

Live/real-time GIS data available within the solution

GIS Intelligence (GeoRules) - breaks down silos and provides automation

Data visualization analytics & insights





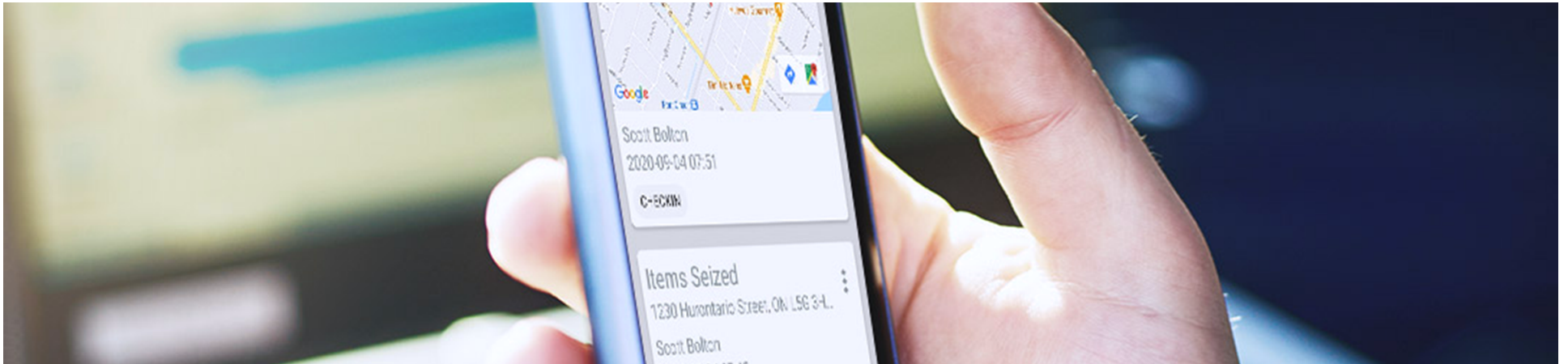


# Conclusion: **Connected** Communities



## What are **connected communities?**

Seamlessly connecting data, people, and processes, and allowing technology work behind-the-scenes to make government and schools work better, so every community and its citizens thrive



# Shared Data

Cloud-based data, shared across multiple departments and jurisdictions, facilitates collaboration, communication, and accurate decision-making



© Tyler Technologies 2022





# Connected Apps

Citizens can access data from a constituent portal that pulls information from multiple community agencies, allowing easy access to information

© Tyler Technologies 2022



A group of diverse people, including a young girl, a boy with a red backpack, a man, and a woman, are walking together outdoors in front of a large, modern house. The scene is bathed in warm, golden light, suggesting a bright, sunny day. A semi-transparent white banner with a fine grid pattern is overlaid across the middle of the image, containing the text "Together, we can make a difference".

**Together, we can make a difference**

© Tyler Technologies 2020

 **tyler**  
technologies

Empowering people who serve the public<sup>®</sup>



**tyler**  
technologies

© Tyler Technologies 2020

[tylertech.com](https://tylertech.com)

